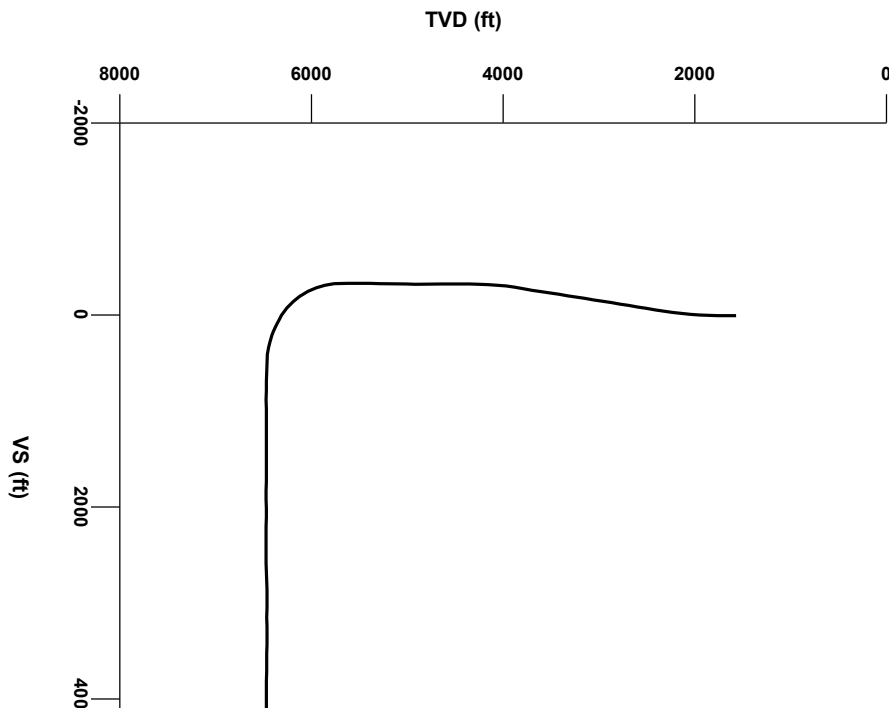




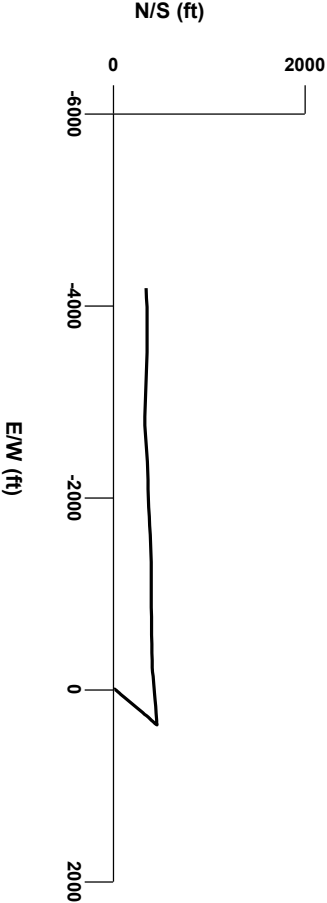
LOG created using Lplot VH Version 3.0, March 07, 2013, Copyright (C) 1999-2009 Pason Systems Corp.

OPERATOR: NOBLE ENERGY
WELL: KRIER GV26-62HN
LOCATION: SEC 26, T9N R61W
COUNTY: WELD
STATE: COLORADO
SPOT: 236' FSL, 410' FEL
ELEVATION: 4974' GL, 4998' KB
FIELD: WILDCAT
SPUD DATE: 2/28/13
TD DATE: 3/06/13
DATES LOGGED: 2/28/13 - 3/07/13
DEPTHS LOGGED: 2000' - 10,808'
LOGGERS: JOHN READY, TERRY ACOMB
DRILLING FLUID: WATER/POLY/MUD
DRILLING RIG: H&P 322
API: 05-123-36549
LOG TYPE:
SCALE: 1:240 (5 inches per 100 feet)
REMARKS:



Survey Elevation

Survey Plan



Chalk

Marl

Shaly Siltstone

Silty Shale

Connection

Connection Gas

Arrow

Midnight Depth

Arrow

LITHOLOGIES

ENGINEERING SYMBOLS

0

UNITS

3000

C1

PPM

300000

C2

PPM

300000

C3

PPM

300000

C4

PPM

300000

DEPTH (FEET)

5740

50

60

70

80

90

5800

10

20

30

40

50

60

70

ROP

FT/HR

800

300

1095u

C1: 73.9%

C2: 7.0%

C3: 13.3%

C4: 5.8%

1530

1072u

427

236

0

LOG CONTINUED FROM
KRIER GY26-62HN VERT

Resumed Drilling from 5740MD
21:47 HRS on 2/16/2013

MD 5633'
INC 4.57
AZM 262.69
TVD 5764.52'

100% SILTY SH: m gy-mgy/bm occ v dk gy, firm -sft, sbblky - sbply, rthy sl silty tex

100% SILTY SH: m gy-mgy/bm occ v dk gy, firm -sft, sbblky - sbply, rthy sl silty tex

100% SILTY SH: m gy-mgy/bm occ v dk gy, firm -sft, sbblky - sbply, rthy sl silty tex

5700

50

CPS

250

132u

TVD

ft

6550

5700

ft

6550

5700

OIL SHOWS

TFG

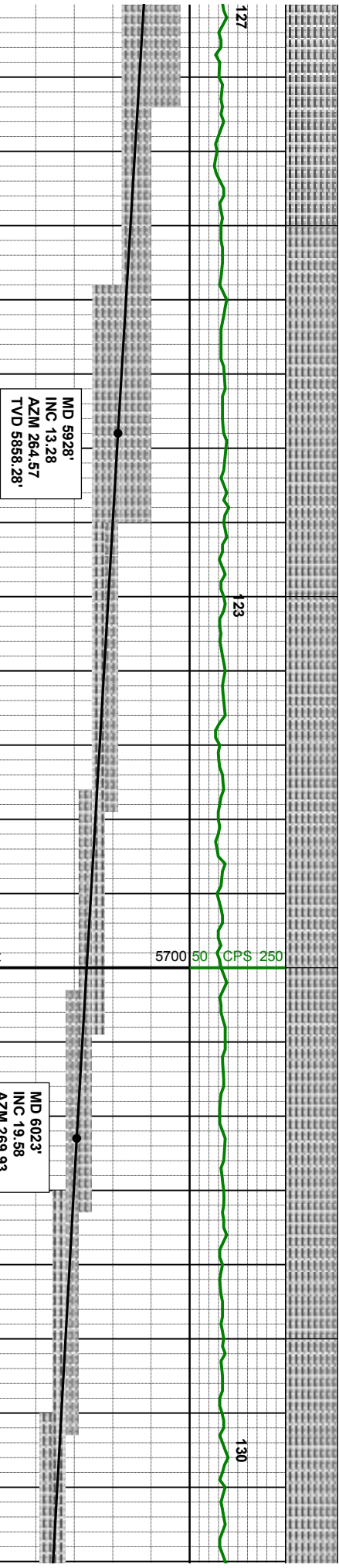
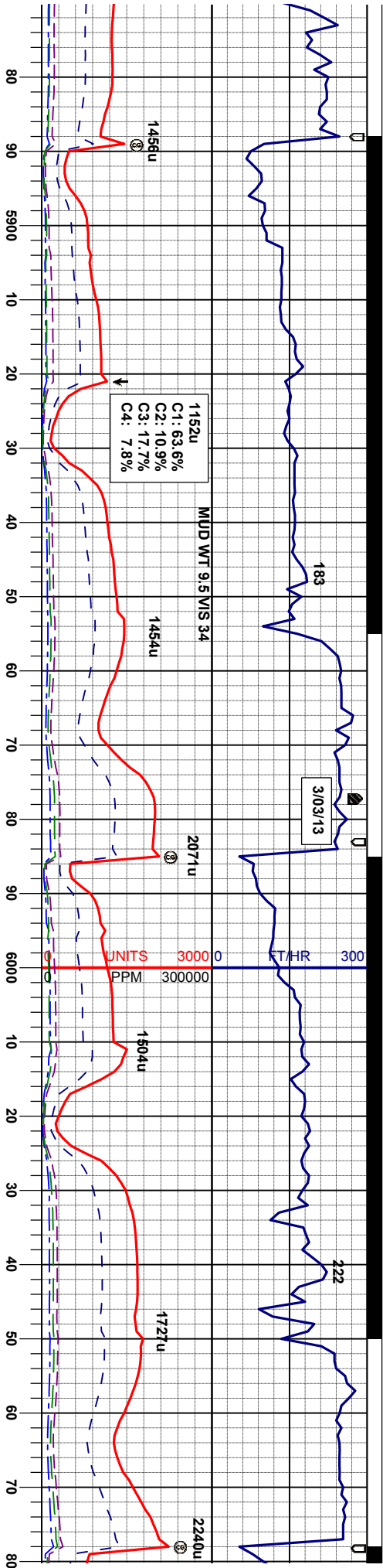
CUTTINGS LITHOLOGY

132u

1072u

427

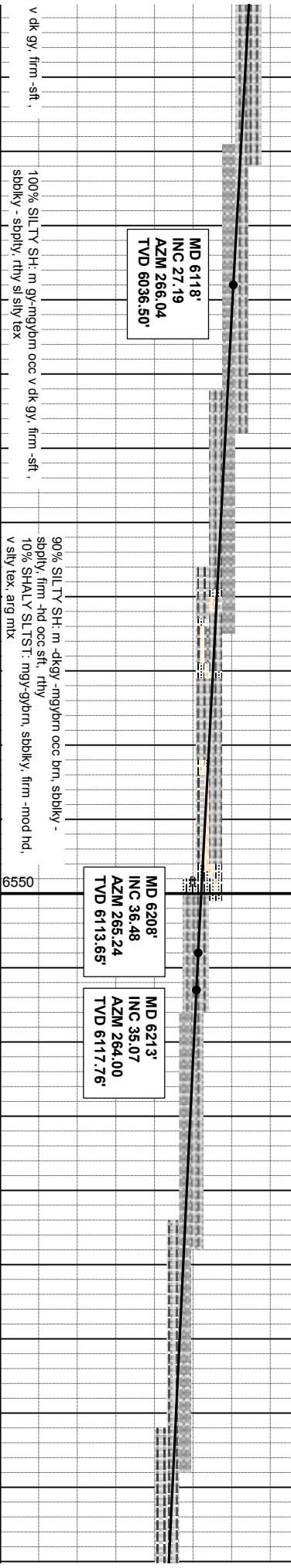
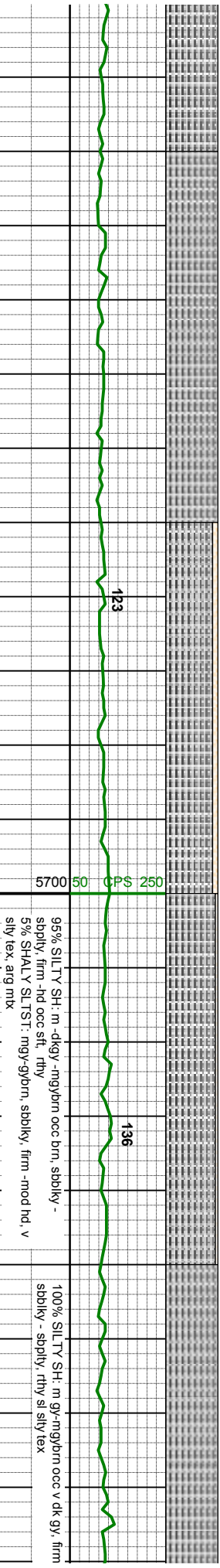
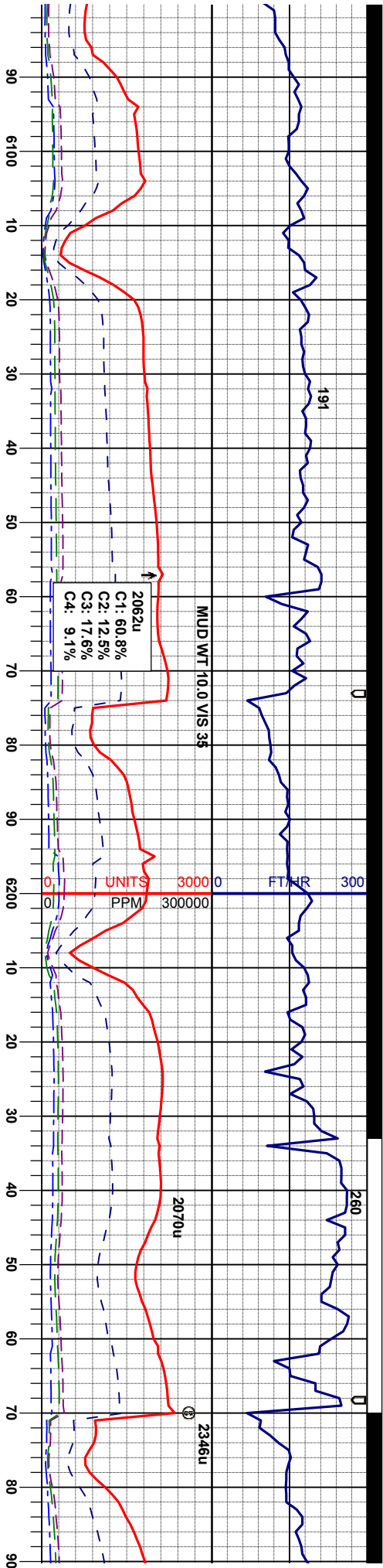
SAMPLE PHOTOS

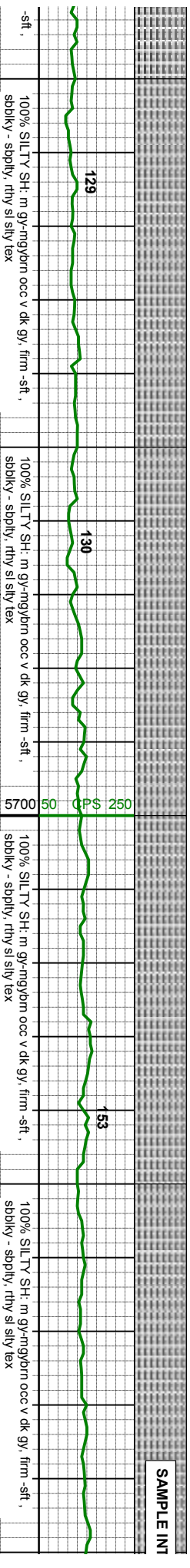
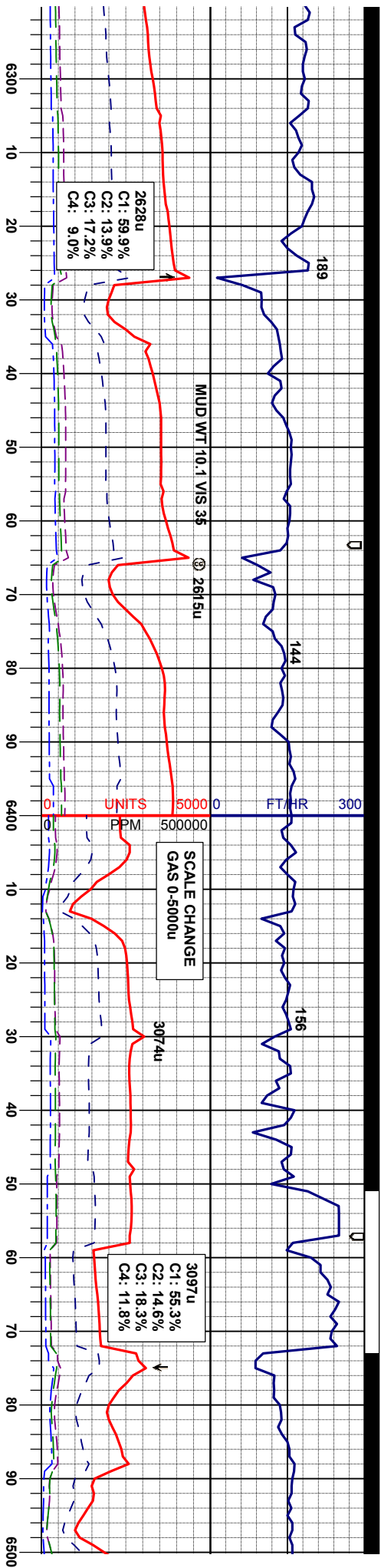


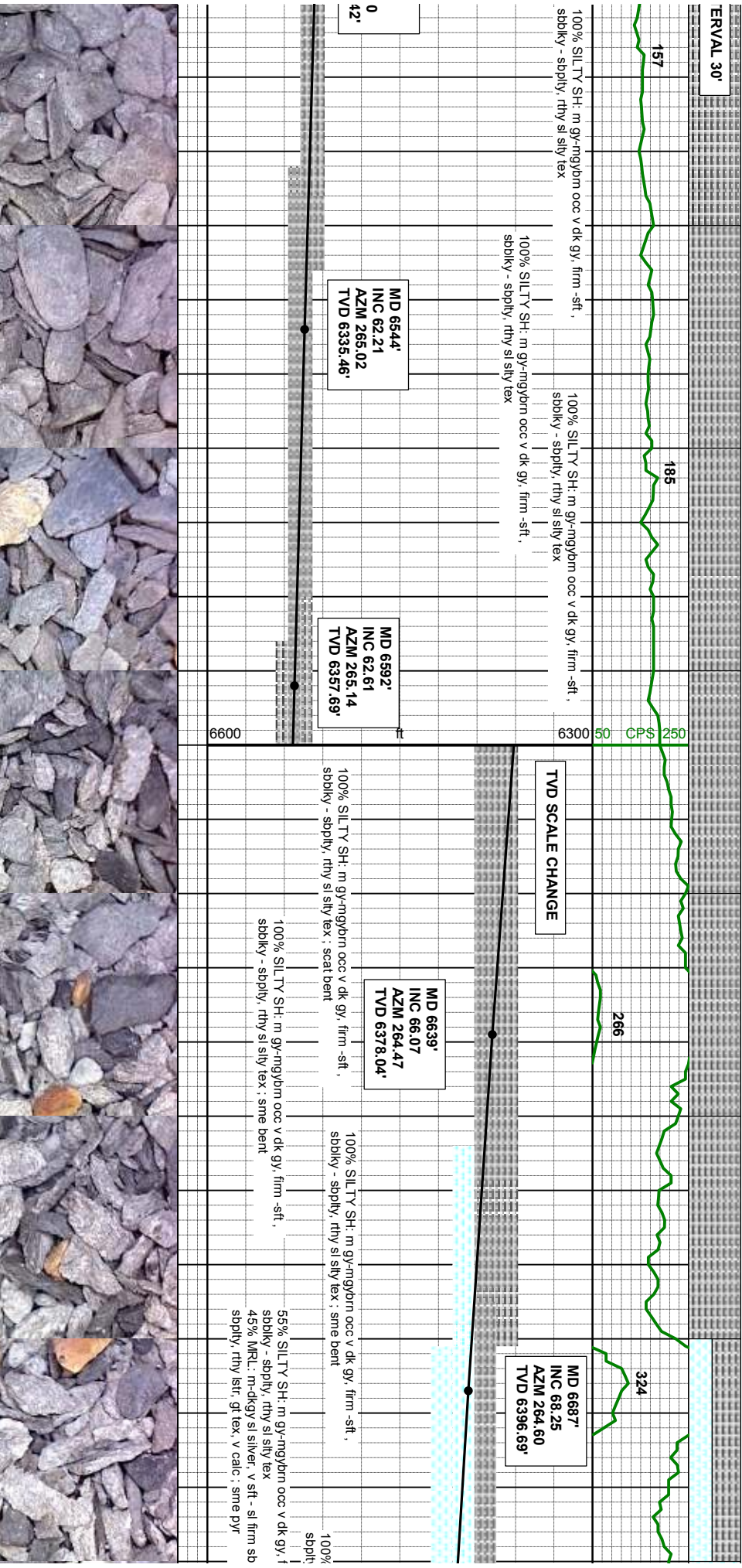
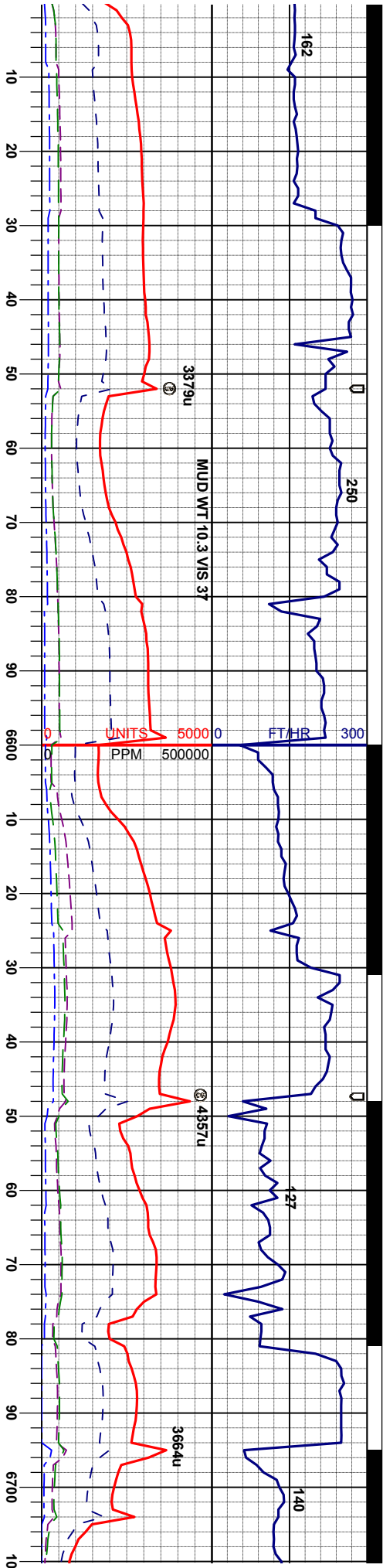
MD 6023'
INC 19.58
AZM 269.93
TVD 5949.37'

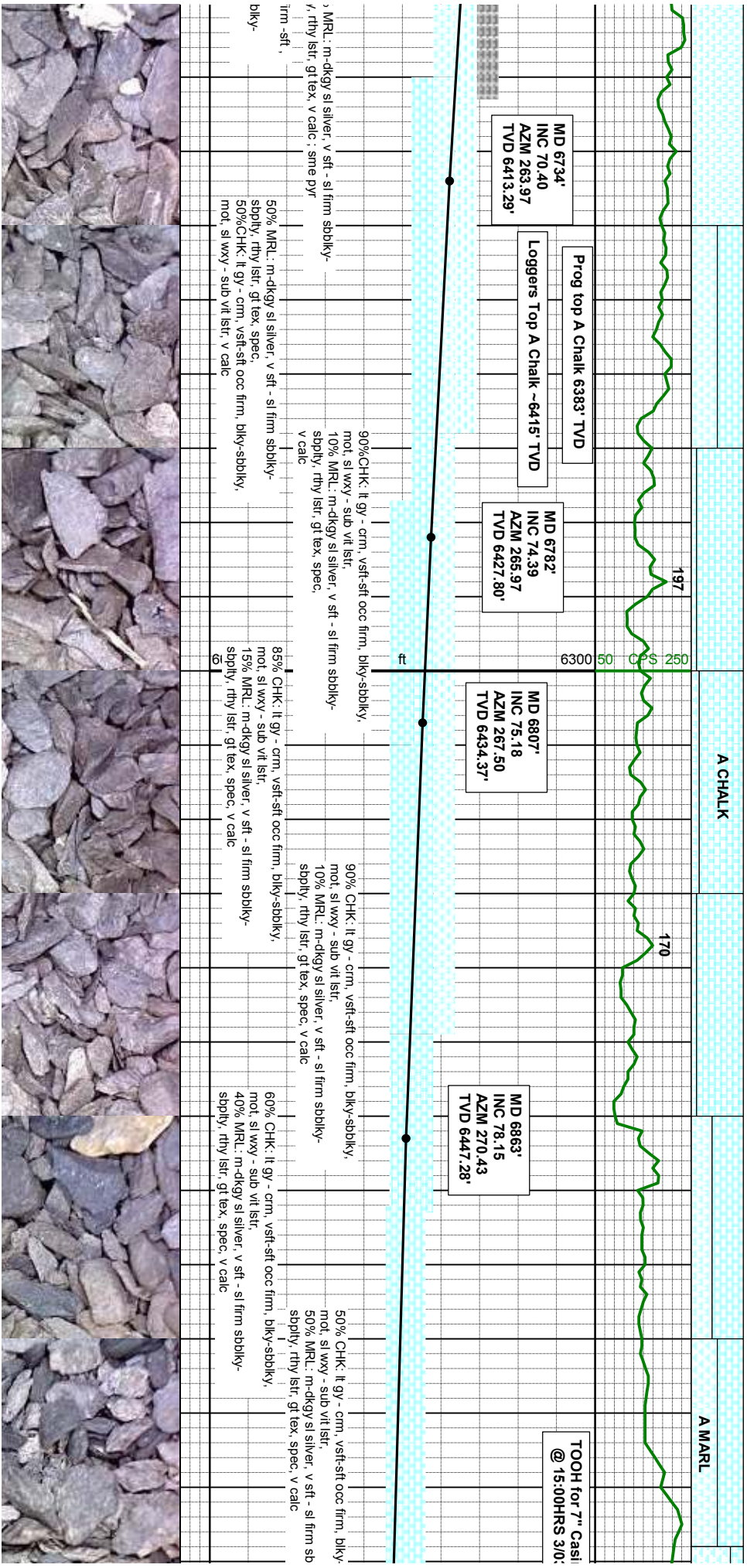
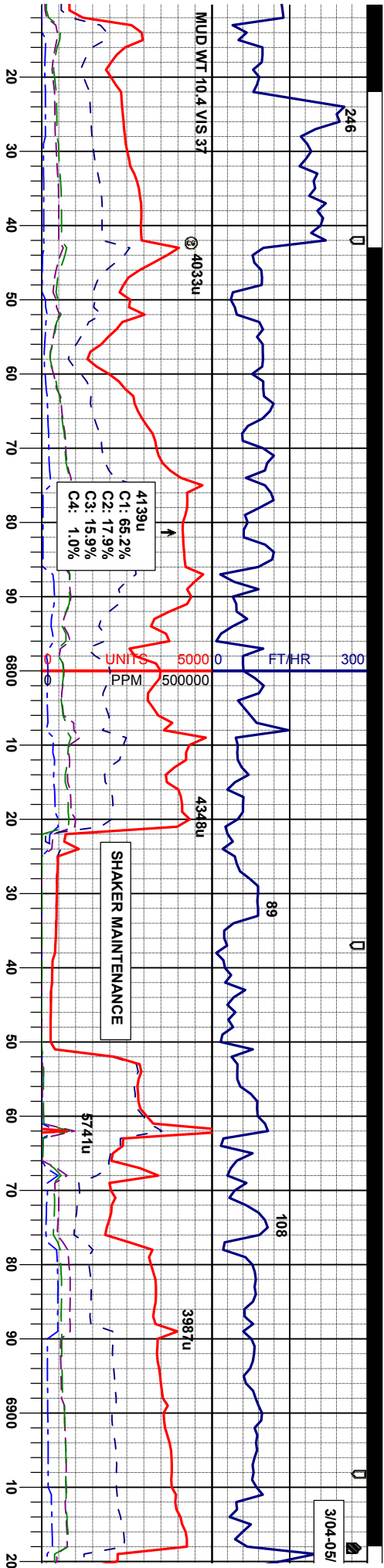
100% SILTY SH: m gy-mgym occ v dk gy, firm -sft, sbdky - sdpily, rthy sl silty tex

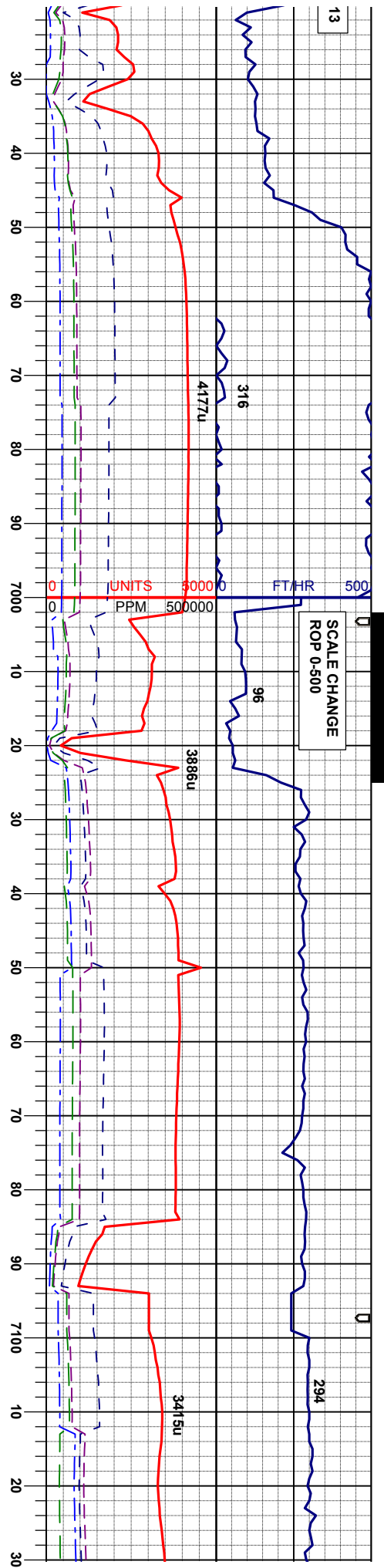












ng @ 6918' MD
3/13

MD 6936'
INC 85.00
AZM 268.46
TVD 6459.36'

277

198

MD 7031'
INC 88.40
AZM 269.43
TVD 6464.83'

MD 7126'
INC 87.81
AZM 269.04
TVD 6467.98

spbkly,
bkly-

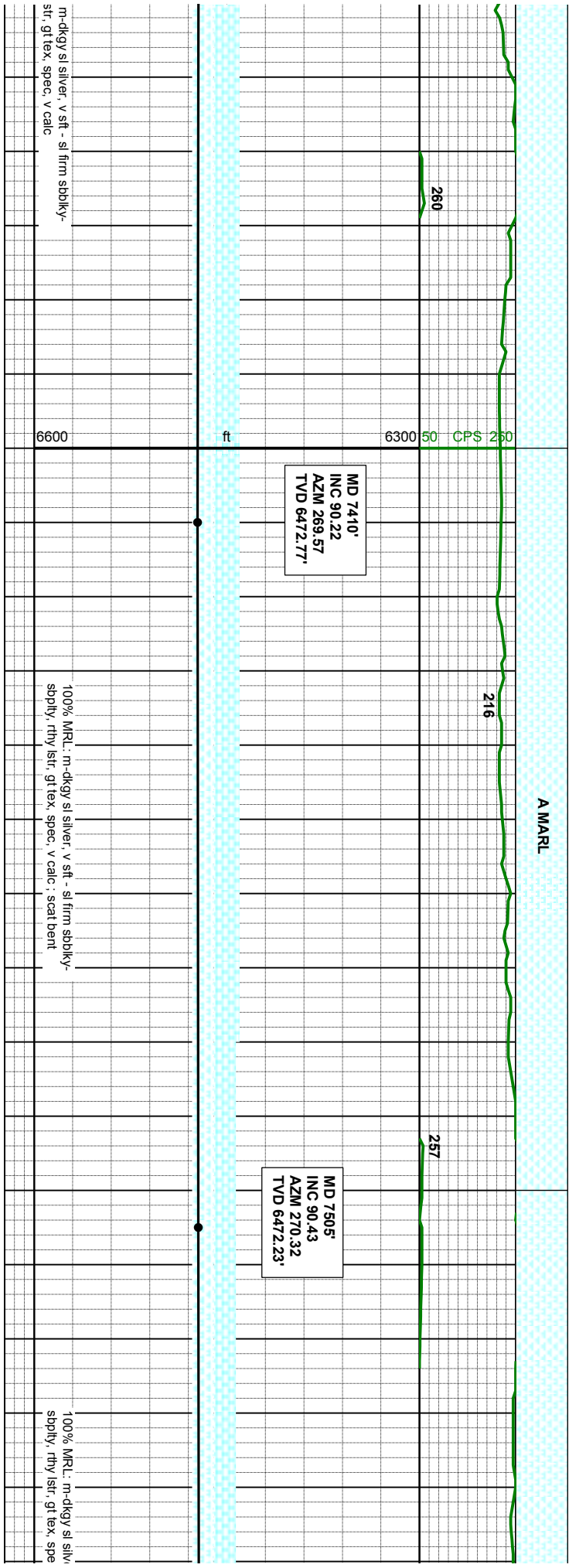
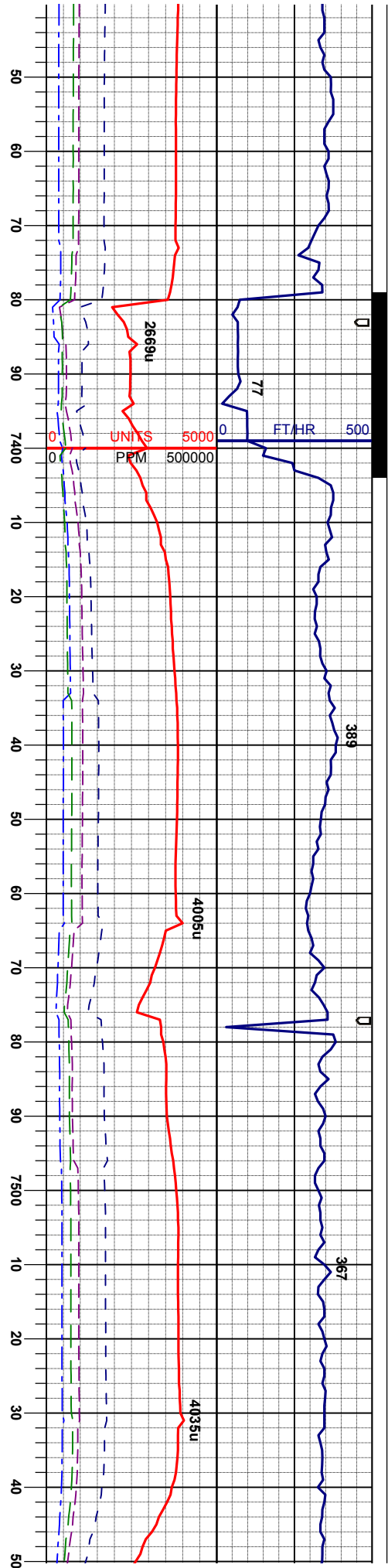
75% MRL: m-dkgy sl silver, v sft - sl firm sbbkly-
spbkly, rthy istr, gt tex, spec,
25% CHK: lt gy - crm, vsft-sft occ firm, bkly-sbbkly,
mol, sl wxy - sub vt istr, v calc

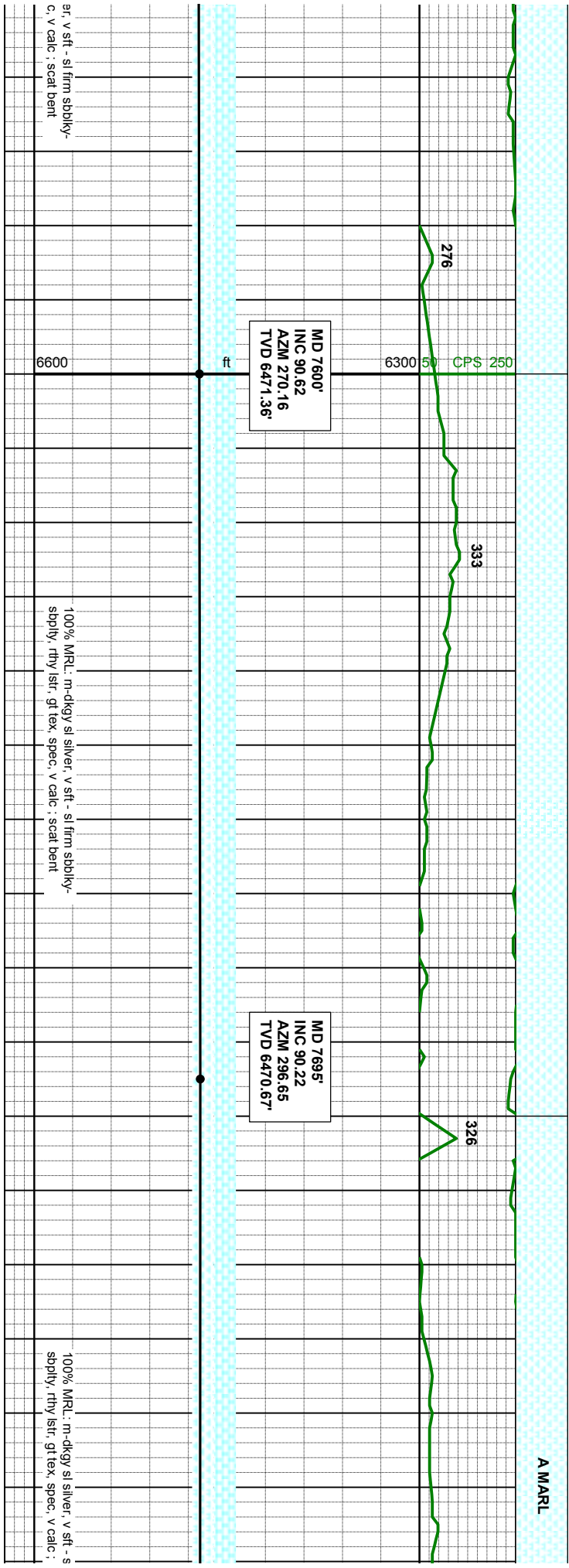
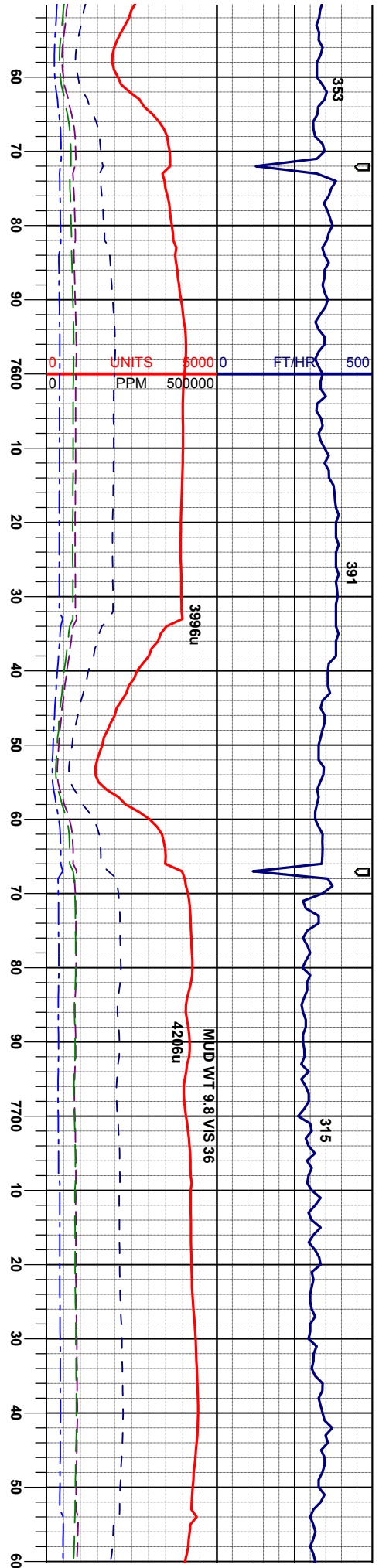
6600

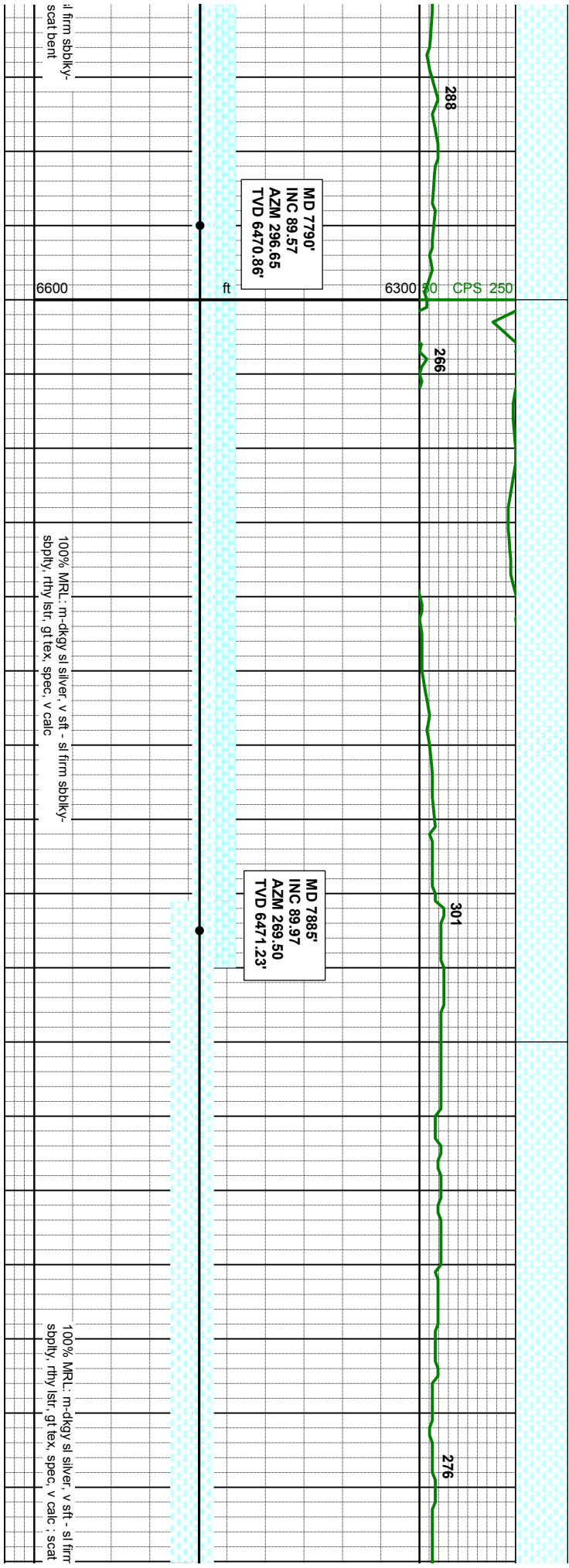
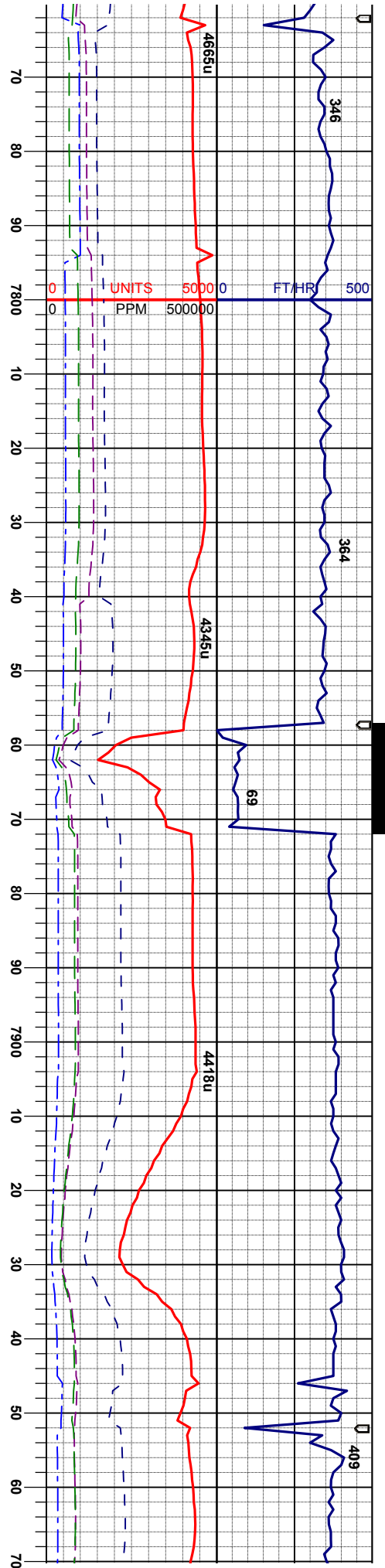
ft

6300 50 CPS 250





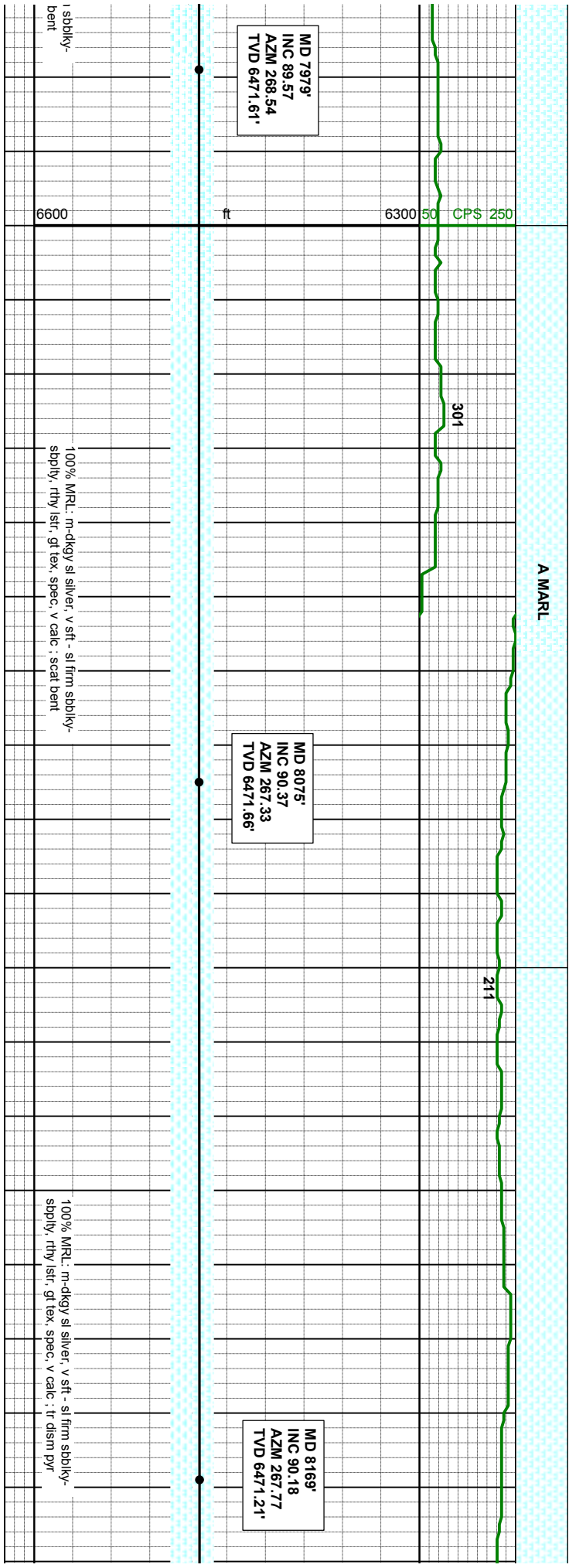
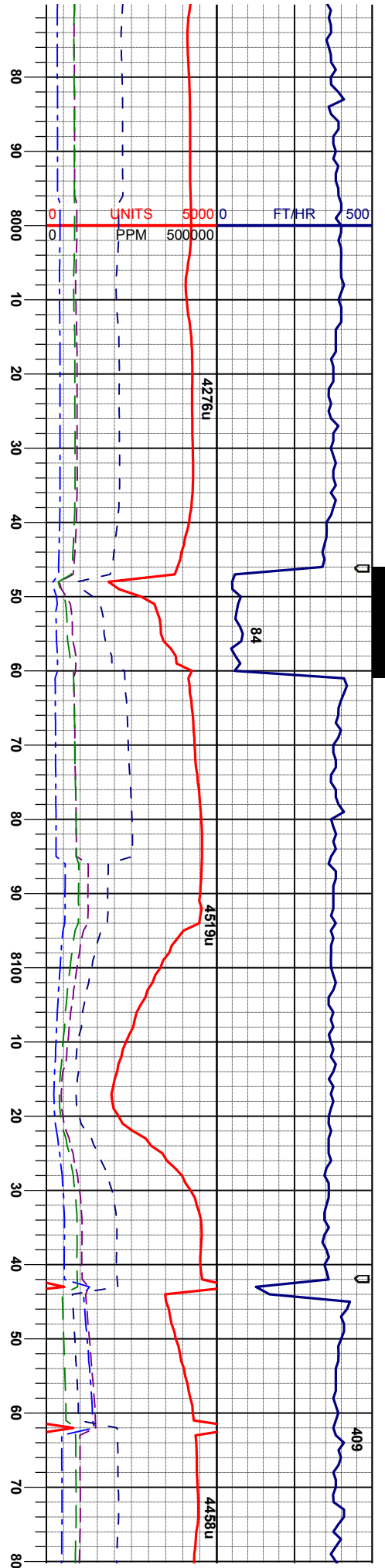


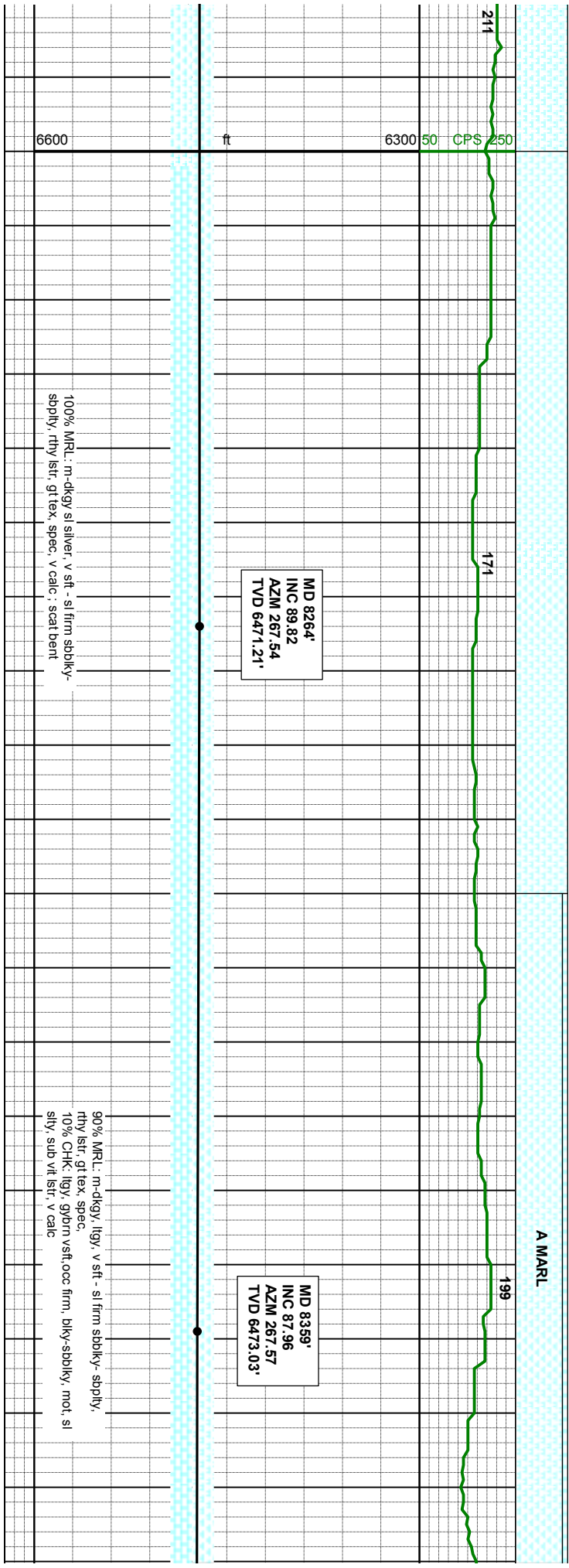
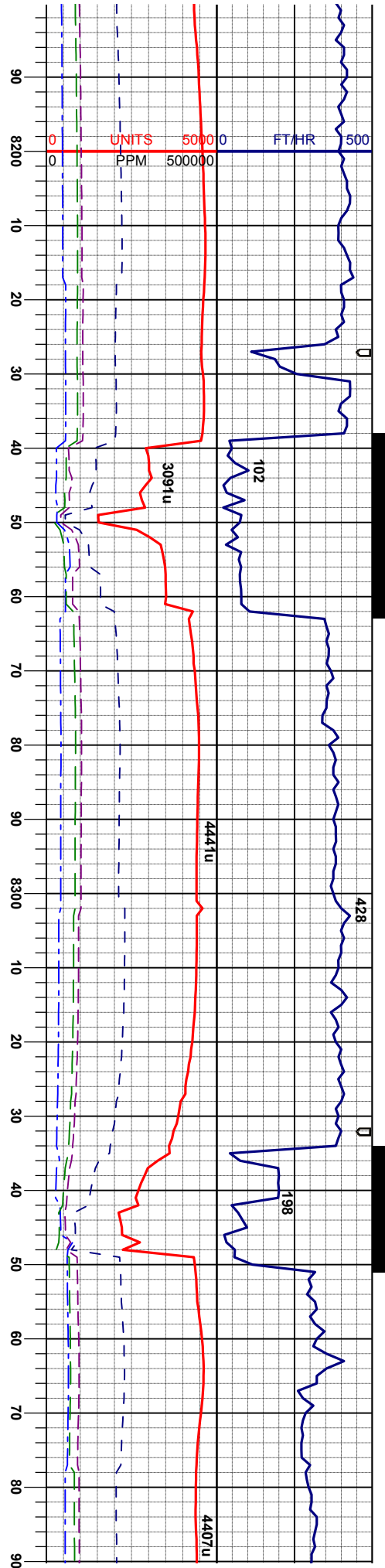


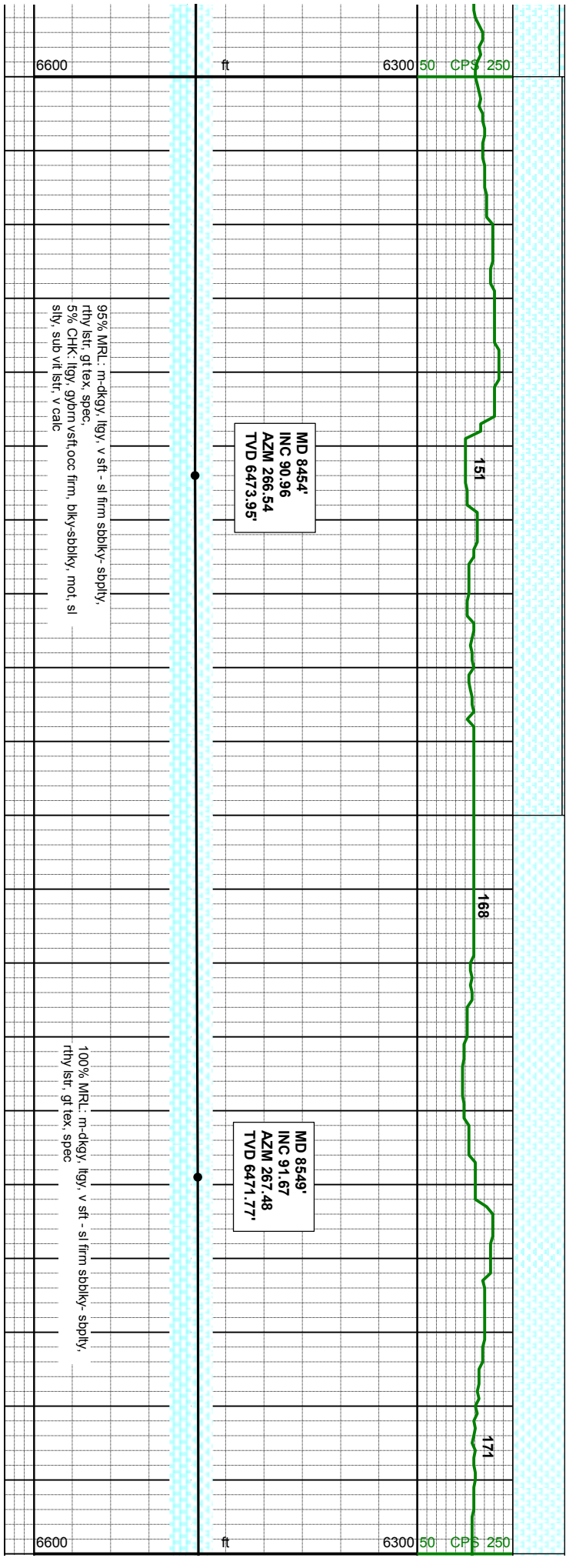
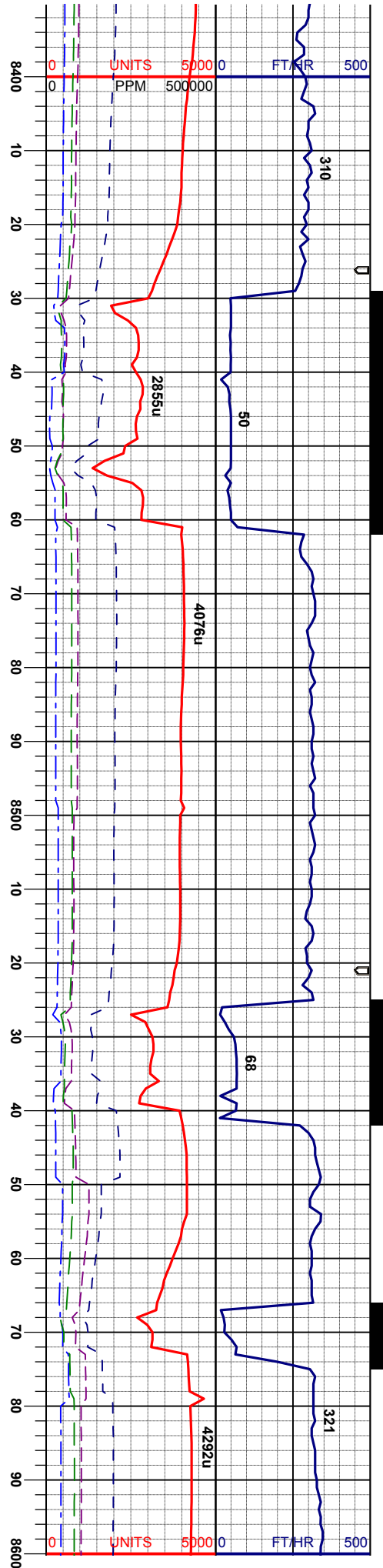
il firm sbdky-
scal bent

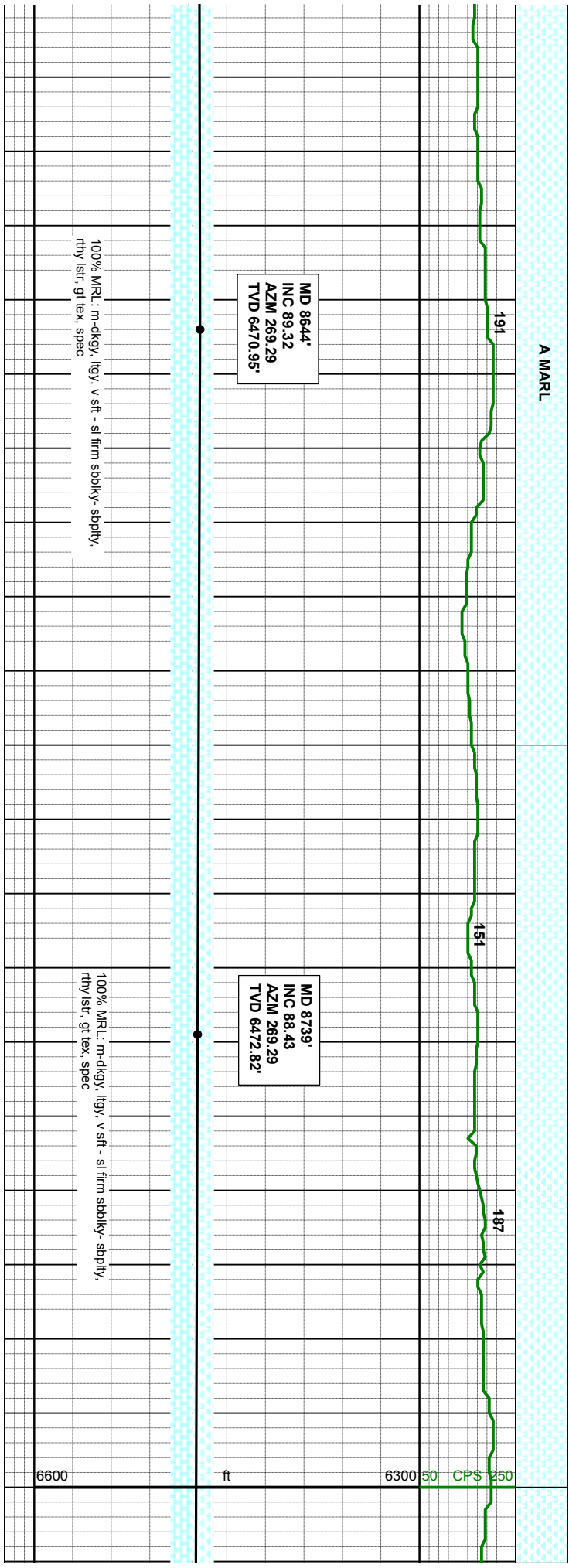
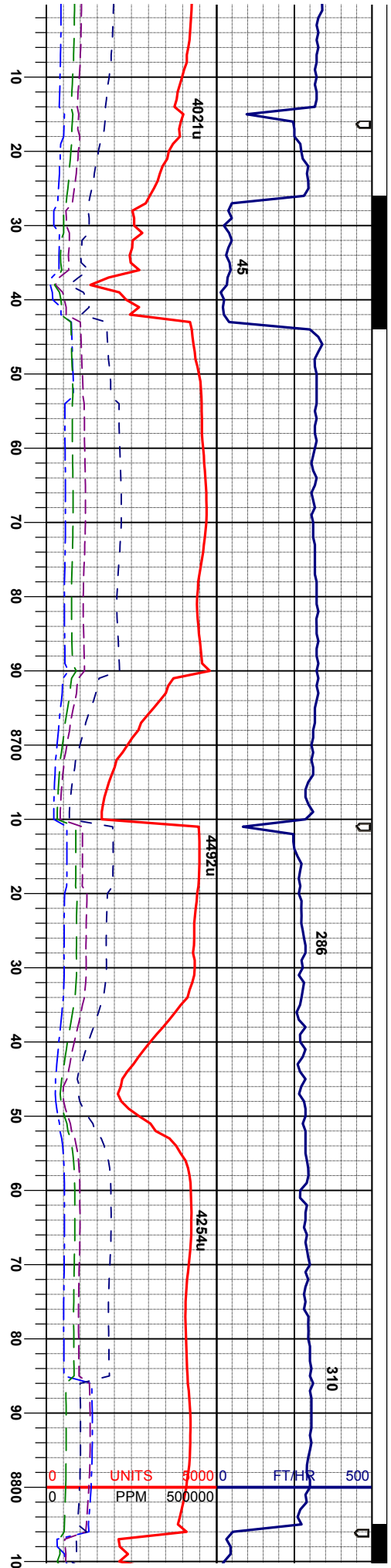
100% MRL - m-dkgy sl silver, v sft - sl firm sbdky-
sbply, rthy lstr, gtl ex, spec, v calc

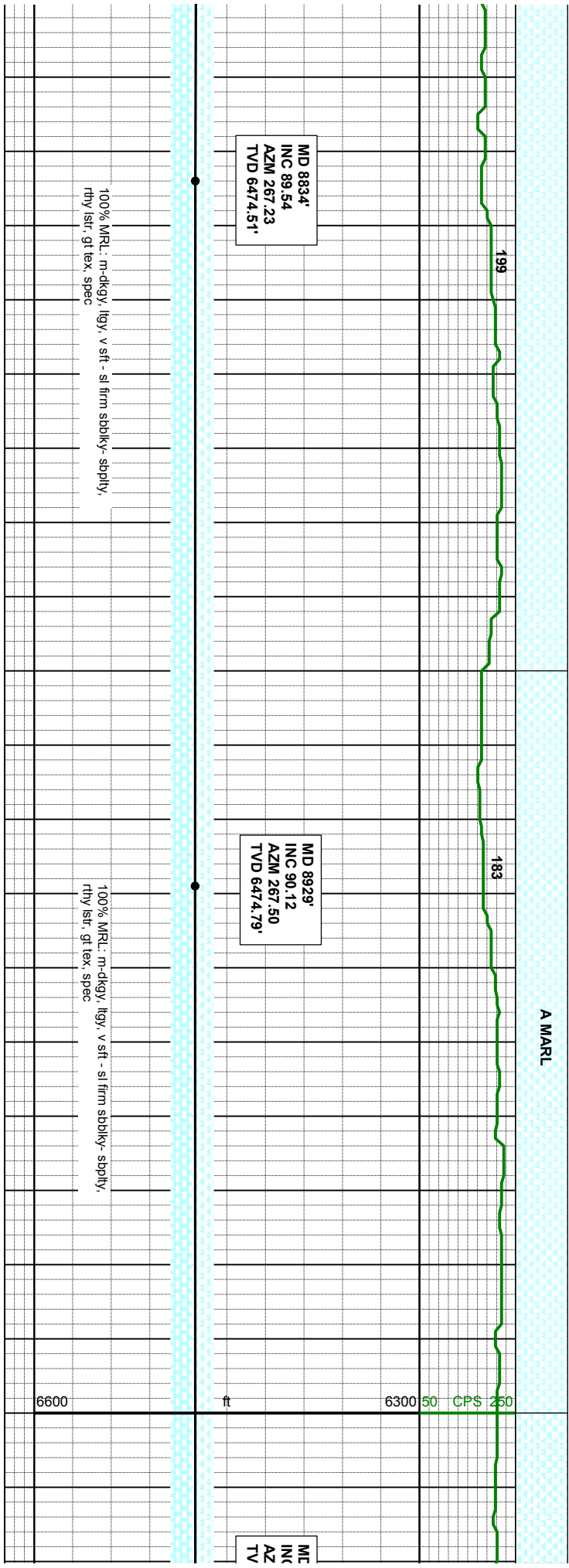
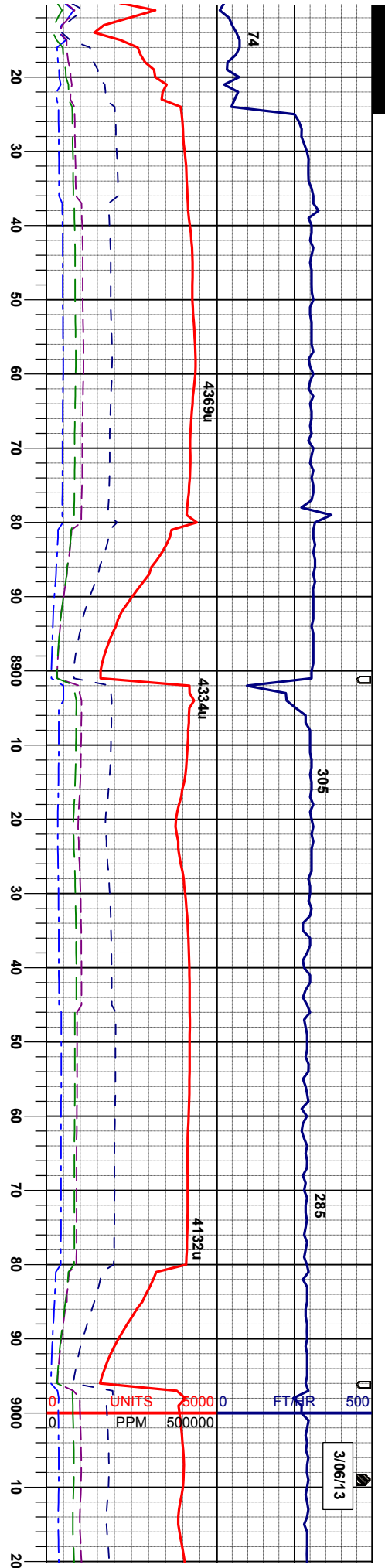
100% MRL - m-dkgy sl silver, v sft - sl firm
sbply, rthy lstr, gtl ex, spec, v calc, scal











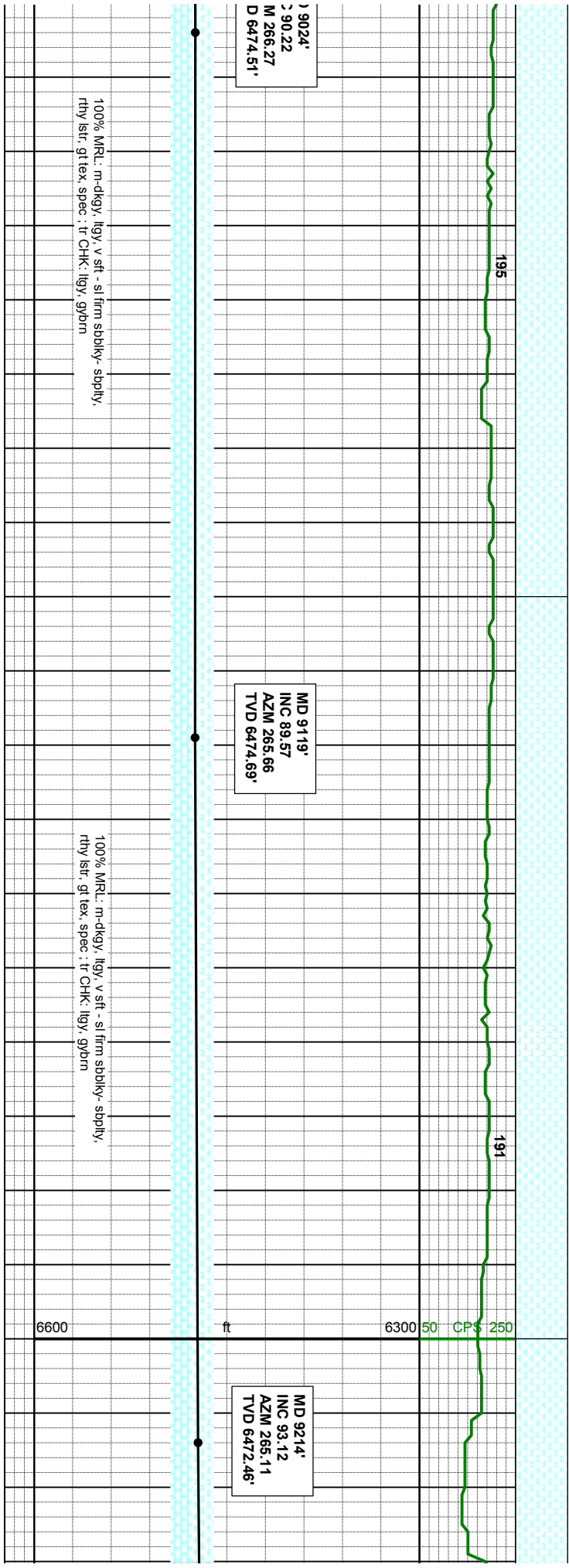
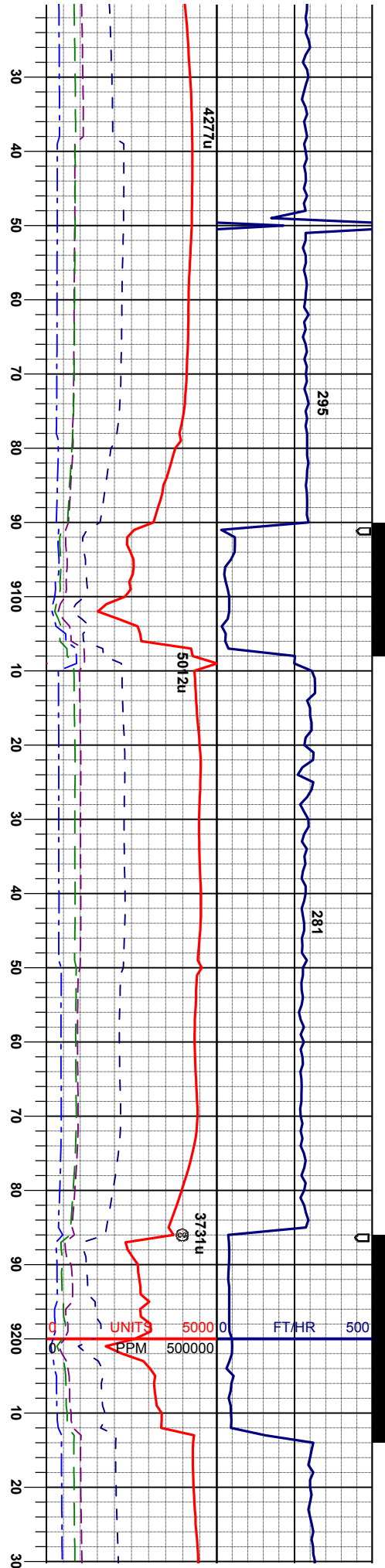
MD 8834'
INC 89.54
AZM 267.23
TVD 6474.51'

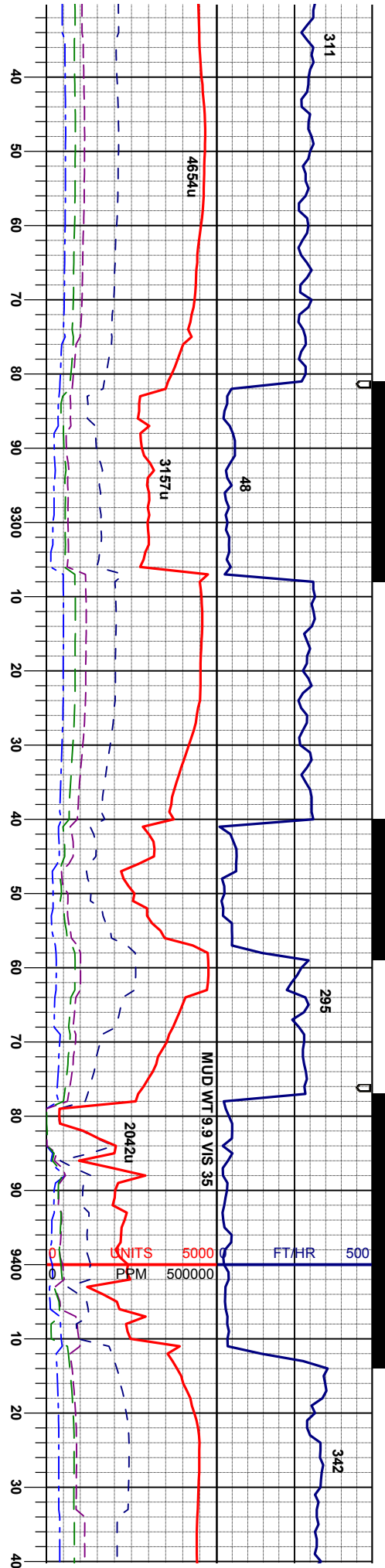
MD 8929'
INC 90.12
AZM 267.50
TVD 6474.79'

100% MRL: m-digy, lgy, v sft - sl firm sbbkly- soplly,
rthy lstr, gt lex, spec

100% MRL: m-digy, lgy, v sft - sl firm sbbkly- soplly,
rthy lstr, gt lex, spec

MC
INC
AZ
TV





A MARL

MD 9309'
INC 92.72
AZM 267.12
TVD 6467.63'

MD 9404'
INC 91.51
AZM 272.44
TVD 6464.12'

100% MRL: m-dkgy, lgy, v sft - sl firm sbdky- spbly,
rthy lstr, gt lex, spec; tr CHK: lgy, gybm

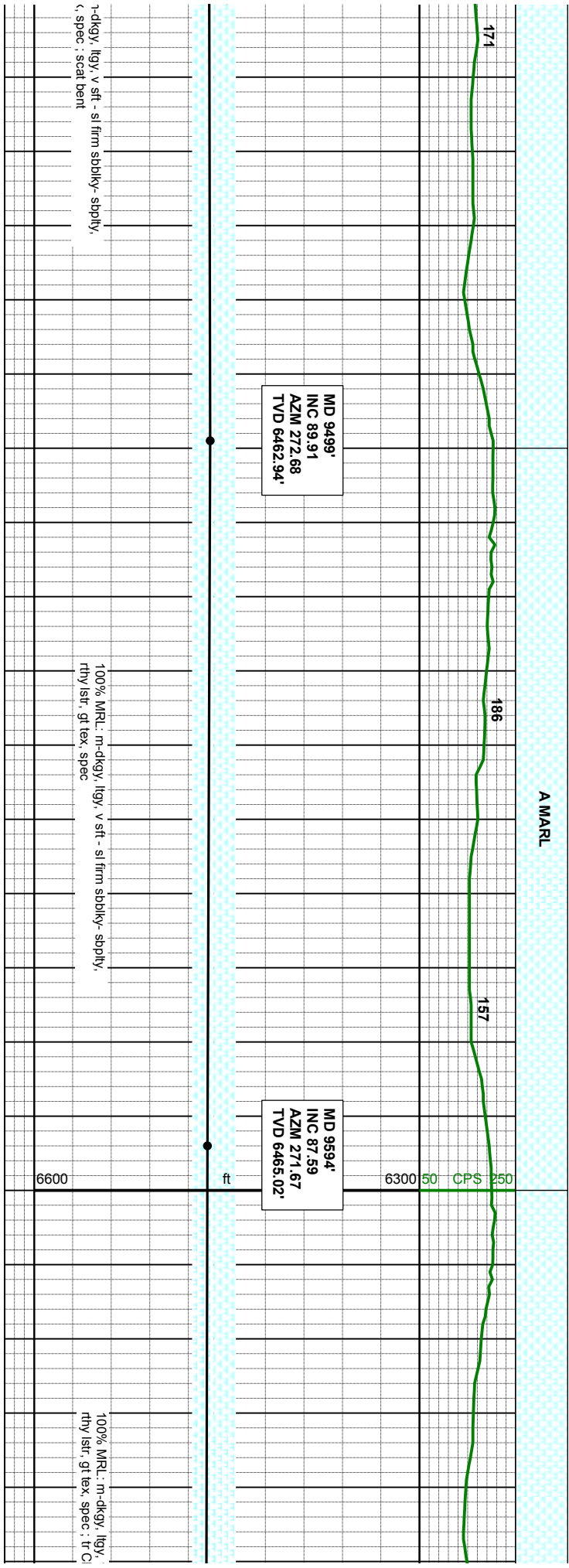
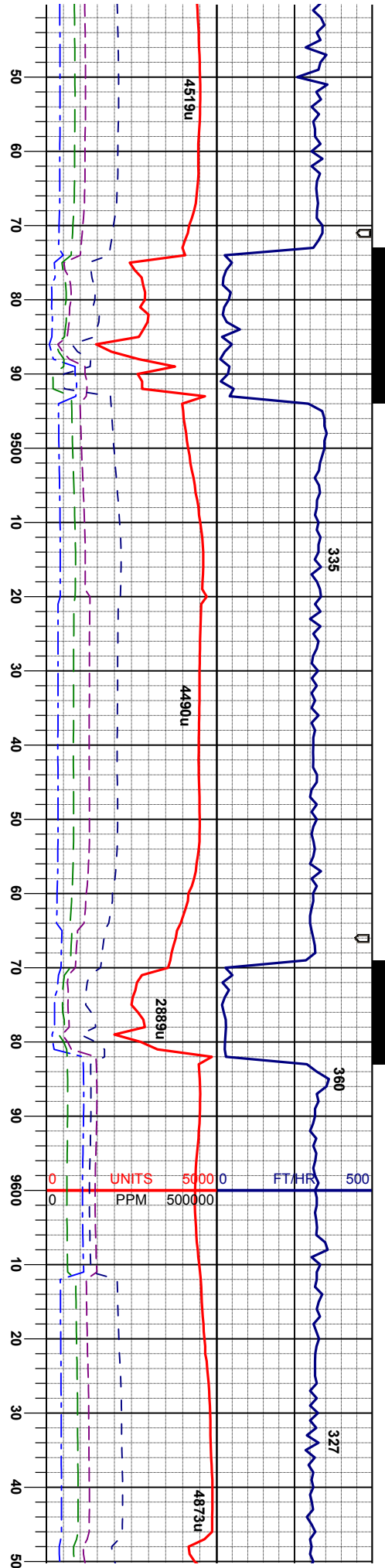
100% MRL: m-dkgy, lgy, v sft - sl firm sbdky- spbly,
rthy lstr, gt lex, spec; tr CHK: lgy, gybm

100% MRL: n
rthy lstr, gt lex

6600

ft

6300 50 CPS 250



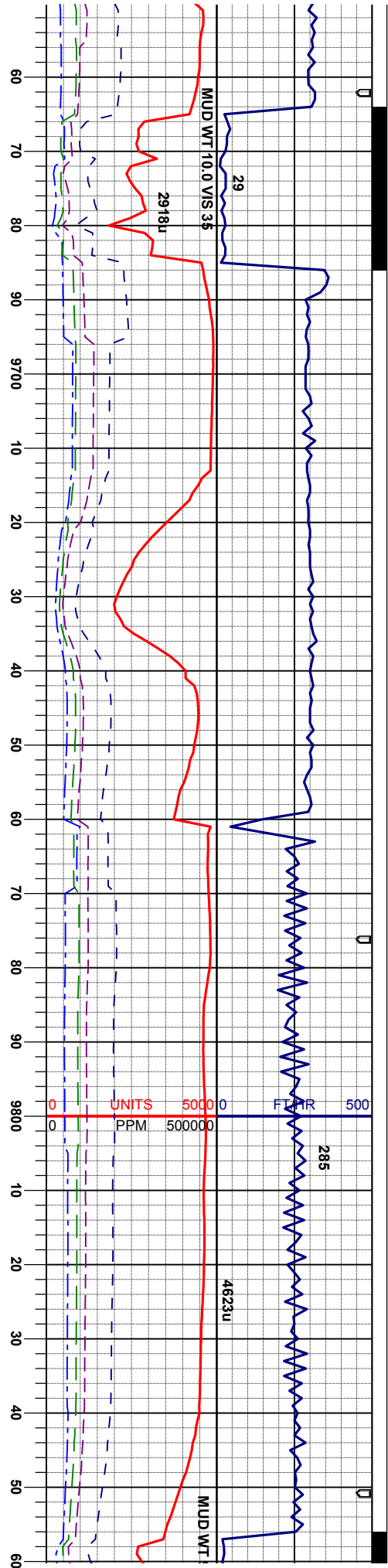
MD 9499'
INC 89.91
AZM 272.68
TVD 6462.94'

MD 9594'
INC 87.59
AZM 271.67
TVD 6465.02'

100% MRL: m-dkgy, lgy, v sft - sl firm sbdky- sppty,
rthy lstr, gt tex, spec

100% MRL: m-dkgy, lgy, v sft - sl firm sbdky- sppty,
rthy lstr, gt tex, spec

100% MRL: m-dkgy, lgy, v sft - sl firm sbdky- sppty,
rthy lstr, gt tex, spec



MD 9689'
INC 90.59
AZM 272.35
TVD 6466.53'

MD 9784'
INC 91.23
AZM 271.79
TVD 6465.02'

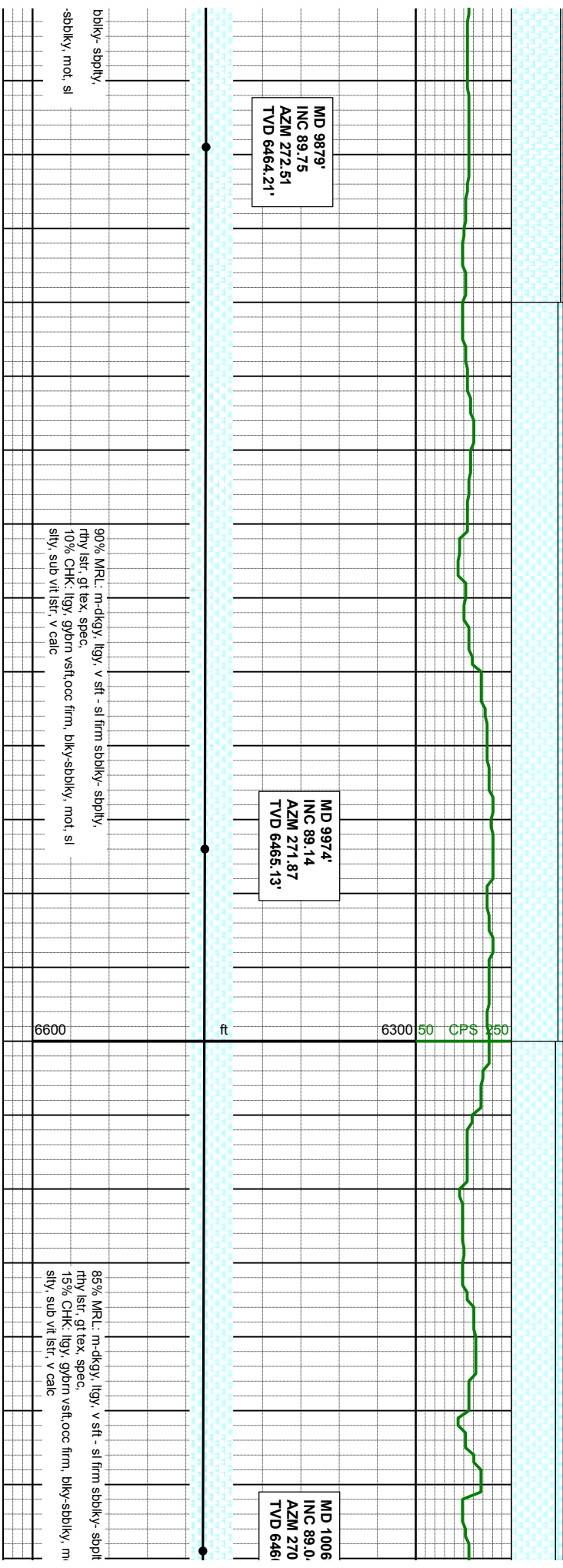
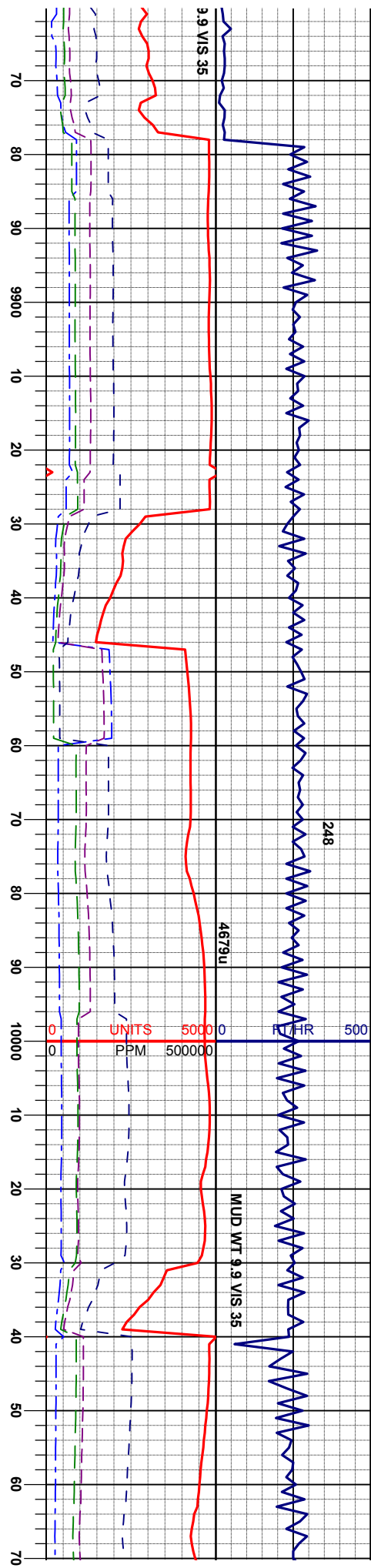
v sft - sl firm sbdky- sbply,
HK: lgy, gybm : scat dent

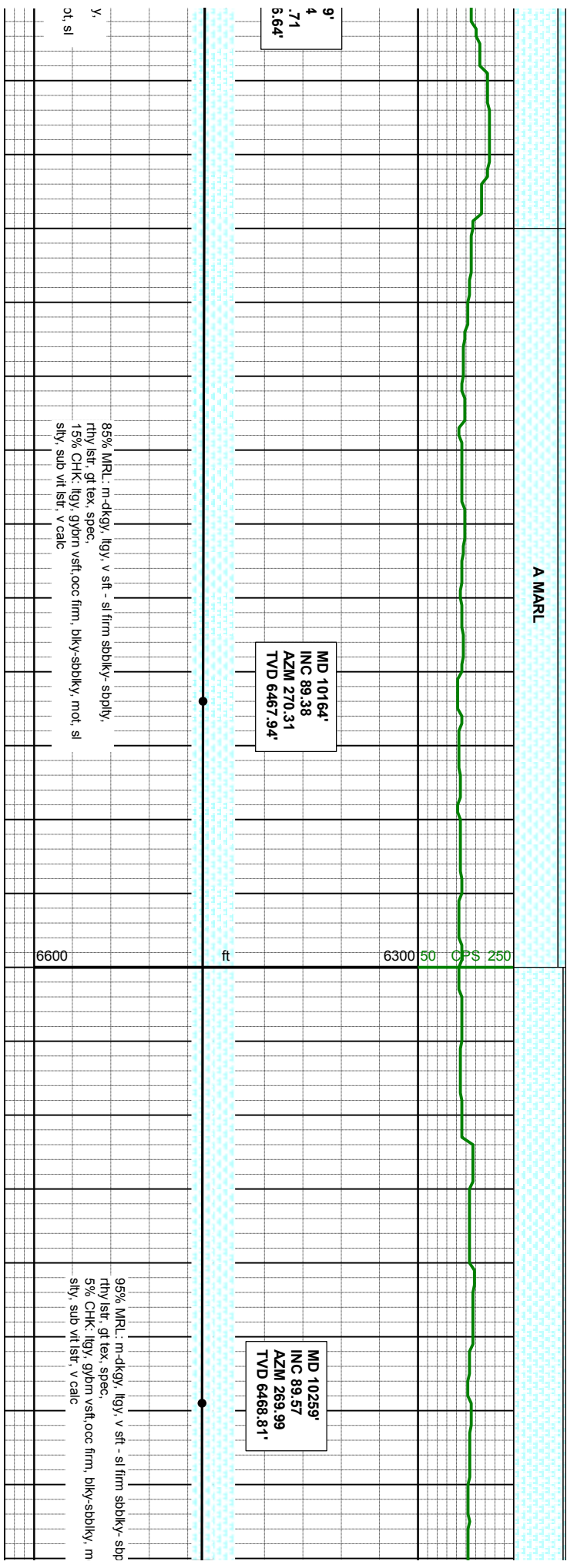
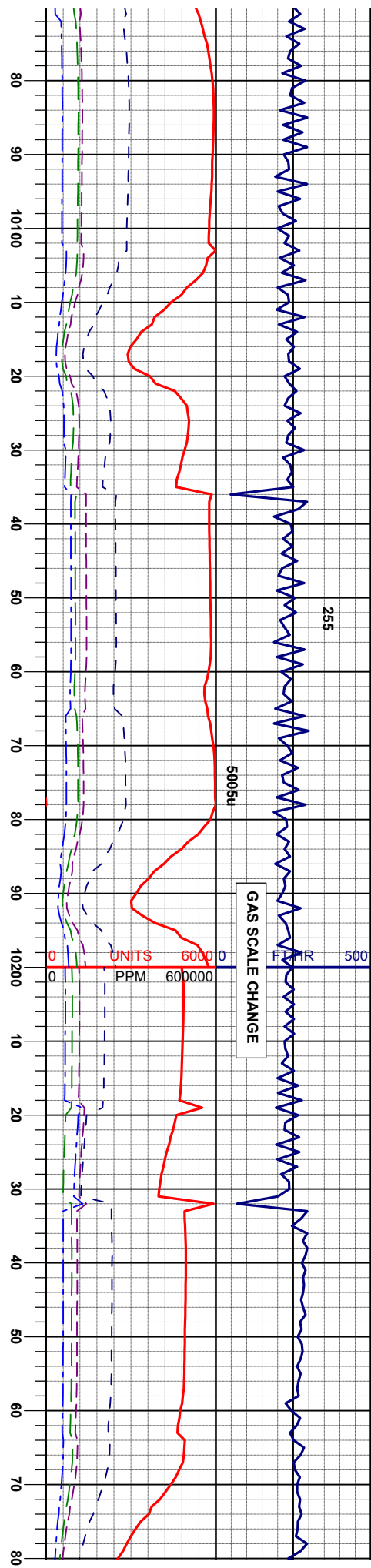
100% MRL: m-dkgy, lgy, v sft - sl firm sbdky- sbply,
rthy lstr, gt tex, spec : tr CHK: lgy, gybm : scat dent

6600

95% MRL: m-dkgy, lgy, v sft - sl firm s
rthy lstr, gt tex, spec,
5% CHK: lgy, gybm vsftroc firm, bly
sly, sub vlt lstr, v calc

A MARL

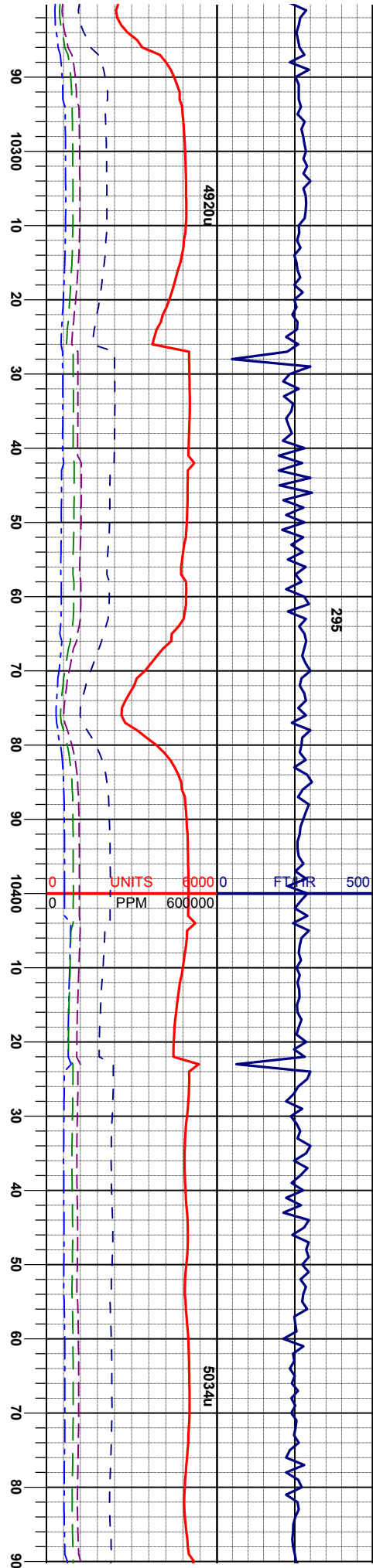




9'
4
.71
5.64'

MD 10164'
INC 89.38
AZM 270.31
TVD 6467.94'

MD 10259'
INC 89.57
AZM 269.99
EVD 3458.84

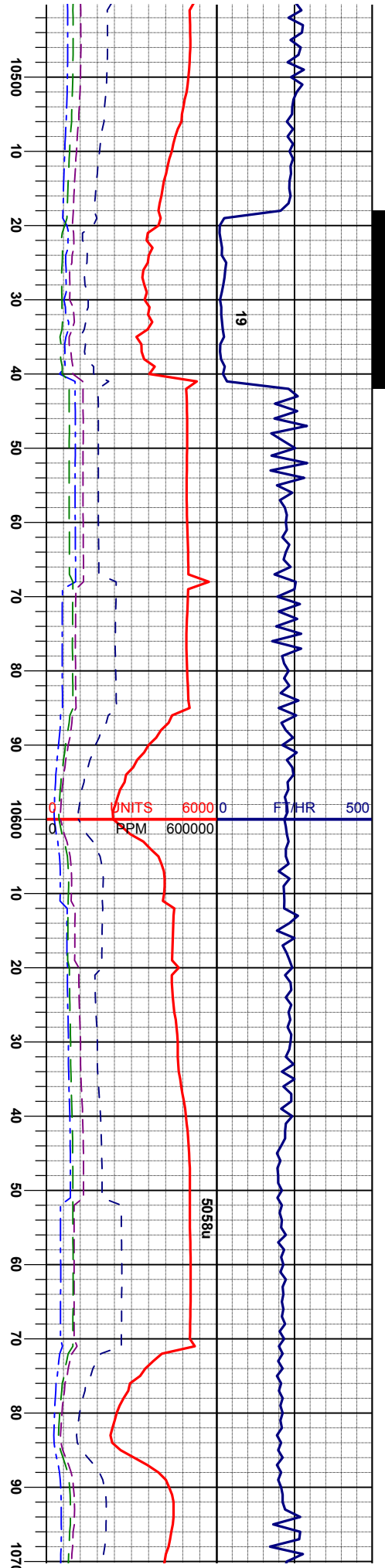


MD 10354'
INC 89.78
AZM 270.22
TVD 6469.35'

MD 10449'
INC 88.61
AZM 270.02
TVD 6470.63'

100% MRL: m-dkgy, lgy, v sft - sl firm sbdky-sbply,
rthy lstr, gt tex, spec; tr CHK: lgy, gyb/m; scat bent

85% MRL: m-dkgy, lgy, v sft - sl firm sbdky-sbply,
rthy lstr, gt tex, spec,
15% CHK: lgy, gyb/m vsft, occ firm, bkly-sbdky, mod, sl
sly, sub vl lstr, v calc



MD 10544'
INC 89.57
AZM 267.16
TVD 6472.19'

90% MRL: m-dkgy, lgy, v sft - sl firm sbdky- spply,
rthy lstr, gt tex, spec,
10% CHK: lgy, gybrn vsft, occ firm, bky-sbdky, mot, sl
sily, sub vit lstr, v calc

MD 10639'
INC 90.25
AZM 267.16
TVD 6472.19'

85% MRL: m-dkgy, lgy, v sft - sl firm sbdky- spply,
rthy lstr, gt tex, spec,
15% CHK: lgy, gybrn vsft, occ firm, bky-sbdky, mot, sl
sily, sub vit lstr, v calc

