

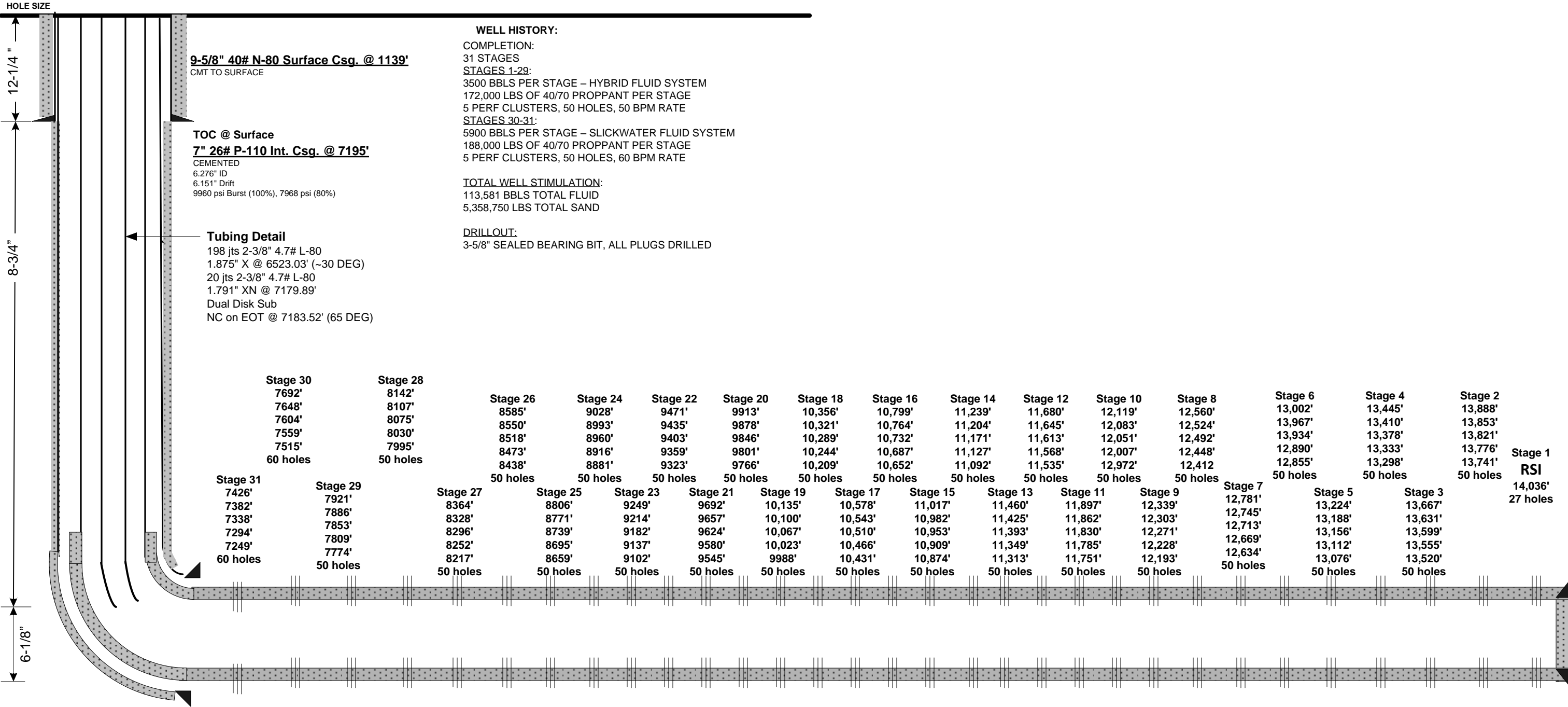
Current Wellbore Schematic

Encana Oil & Gas (USA) Inc.



WELL : Gurtler 2B-30H – Cemented Perf/Plug
LOCATION : Lat: 40.11611000 Long: -104.59977000
COUNTY : WELD STATE: CO
FIELD : Wattenberg - NIOBRARA
ELEVATION : 4928' (GL) 4941' (KB) Δ 13'

SPUD DATE: 11/08/2012
COMPL. DATE: Feb, 2013
API #: 05123359810000



WELL HISTORY:
COMPLETION:
31 STAGES
STAGES 1-29:
3500 BBLs PER STAGE – HYBRID FLUID SYSTEM
172,000 LBS OF 40/70 PROPPANT PER STAGE
5 PERF CLUSTERS, 50 HOLES, 50 BPM RATE
STAGES 30-31:
5900 BBLs PER STAGE – SLICKWATER FLUID SYSTEM
188,000 LBS OF 40/70 PROPPANT PER STAGE
5 PERF CLUSTERS, 50 HOLES, 60 BPM RATE

TOTAL WELL STIMULATION:
113,581 BBLs TOTAL FLUID
5,358,750 LBS TOTAL SAND

DRILLOUT:
3-5/8" SEALED BEARING BIT, ALL PLUGS DRILLED

TOC @ Surface
7" 26# P-110 Int. Csg. @ 7195'
CEMENTED
6.276" ID
6.151" Drift
9960 psi Burst (100%), 7968 psi (80%)

Tubing Detail
198 jts 2-3/8" 4.7# L-80
1.875" X @ 6523.03' (~30 DEG)
20 jts 2-3/8" 4.7# L-80
1.791" XN @ 7179.89'
Dual Disk Sub
NC on EOT @ 7183.52' (65 DEG)

Directional Data
KOP: 6250'
30°: 6568'
60°: 7160'
80°: 7291'
90°: 7544'
Max DLS: 13.2°/100' @ 7291' MD
Max TVD: 6974' TVD @ 8660' MD

4-1/2" 13.5# P-110 DQX Prod. Csg @ 14088'
CEMENTED
3.920" ID
3.795" Drift
12,410 psi Burst (100%), 9928 psi (80%)

TD: 14,103'
PBTD: 14,084' (LC)
TVD: ~6917'
BHT: 240 F

Lateral Length: 6908' (Int. Shoe-TD)