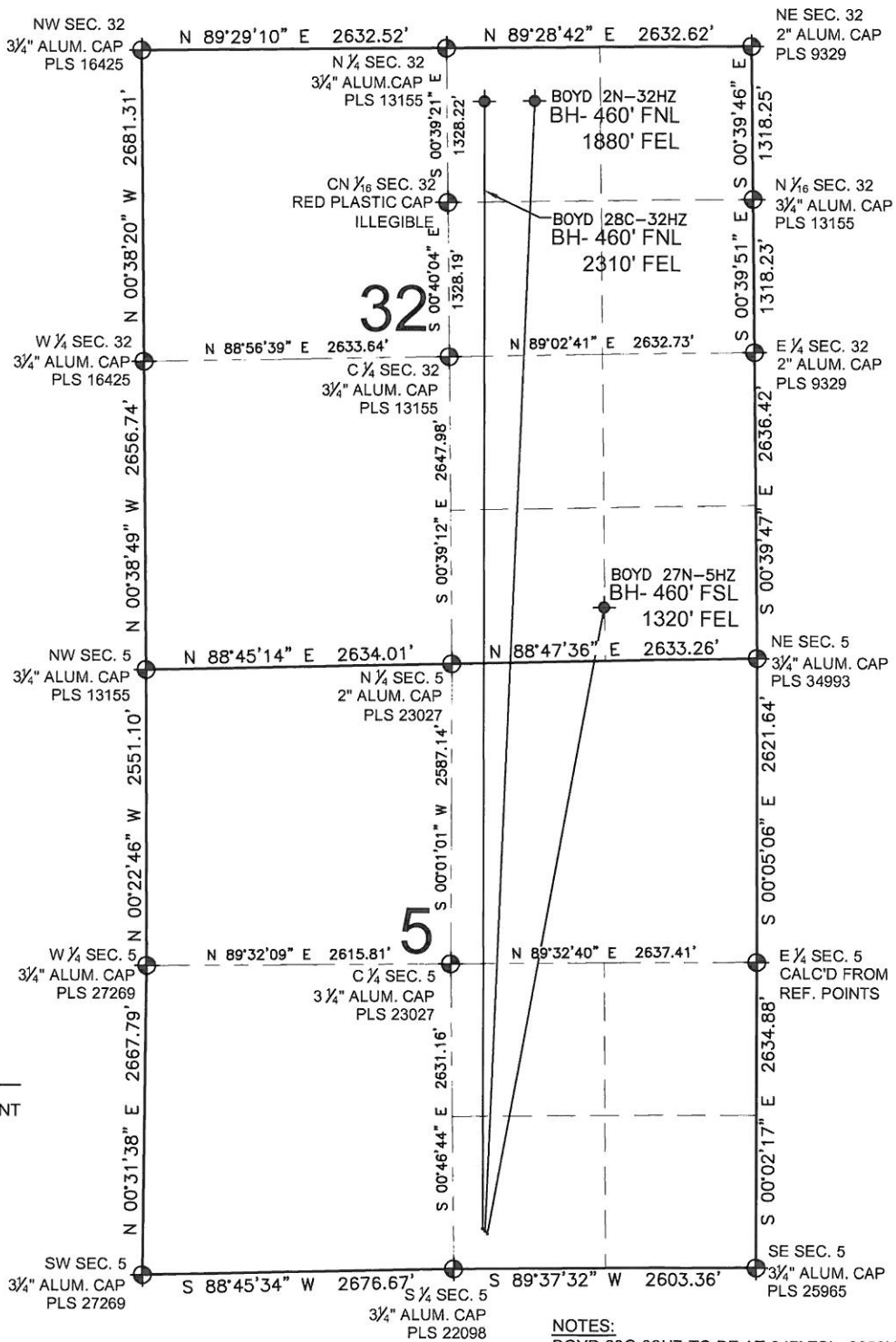


# BOYD 27N-5HZ MULTI-WELL PLAN

SECTION 5, TOWNSHIP 1 NORTH, RANGE 65 WEST, 6TH P.M.



**LEGEND**

- ⊕ = EXISTING MONUMENT
- = PROPOSED WELL
- ◆ = BOTTOM HOLE
- BH= BOTTOM HOLE

**NOTES:**  
 BOYD 28C-32HZ TO BE AT 347' FSL, 2356' FEL.  
 BOTTOM HOLE AT 460' FNL & 2310' FEL, SEC. 32  
 BOYD 2N-32HZ TO BE AT 325' FSL, 2336' FEL.  
 BOTTOM HOLE AT 460' FNL & 1880' FEL, SEC. 32  
 BOYD 27N-5HZ TO BE AT 303' FSL, 2315' FEL.  
 BOTTOM HOLE AT 460' FSL & 1320' FEL, SEC. 32

PREPARED BY:

**PFS** llc  
 Petroleum Field Services, LLC  
 1801 W. 13th Ave.  
 Denver, CO 80204

KERR-MCGEE OIL & GAS ONSHORE LP	
FIELD DATE: 08-27-12	SURFACE LOCATION: WELD COUNTY, COLORADO
DRAWING DATE: 05-21-13	SW 1/4 SE 1/4, SEC. 5, T1N, R65W, 6TH P.M.

