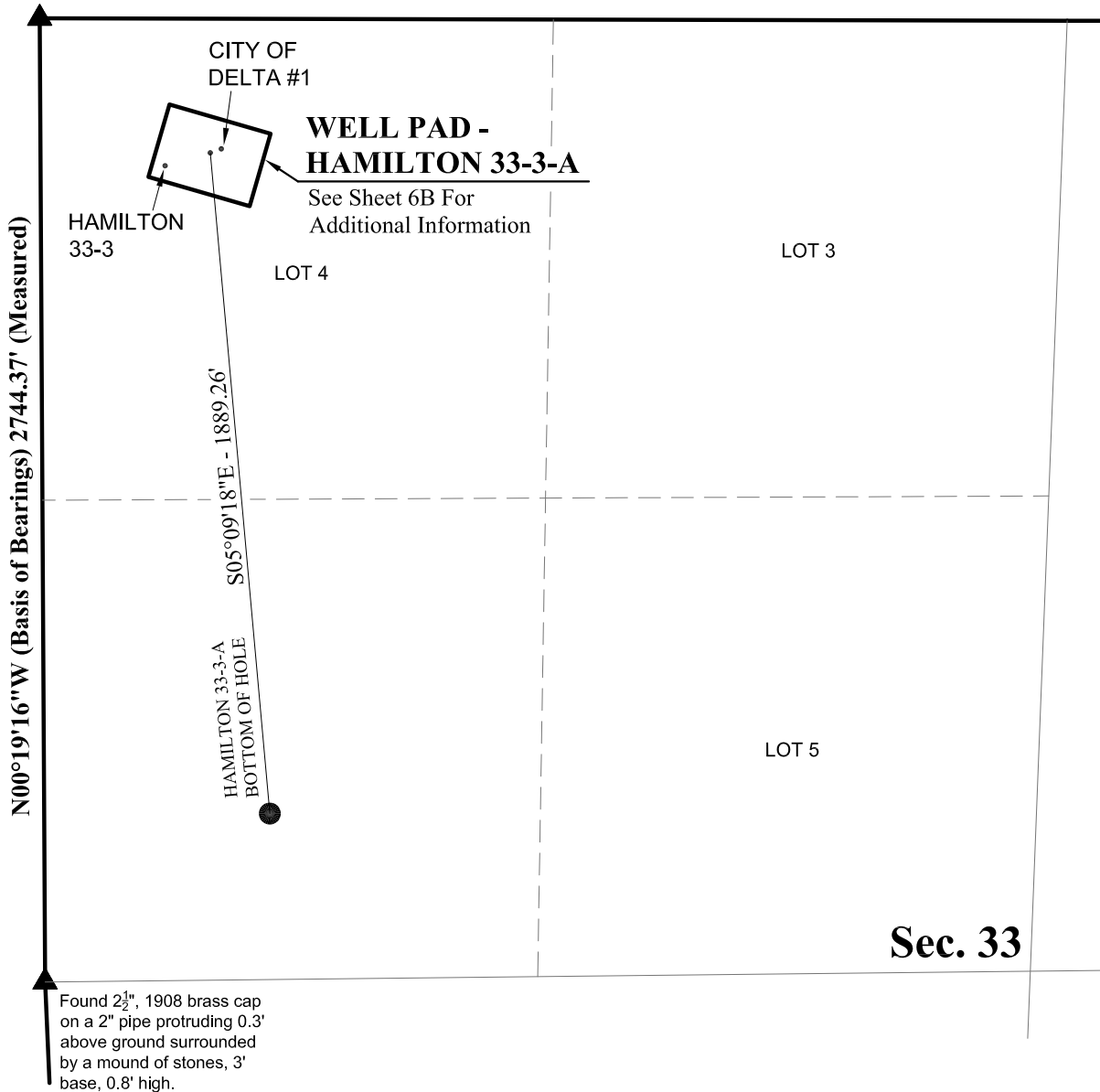


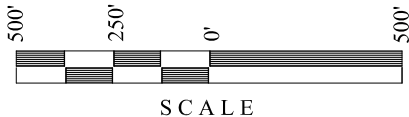
T13S, R95W, 6th P.M.

Found 2½", 1908 brass cap on a 2" pipe surrounded by a mound of stones, 3' base, 1.0' high. Pipe protrudes 0.1' above mound.



NOTES:

- ▲ = Section Corners Located
- 1. Bearings are based on Global Positioning Satellite observations.



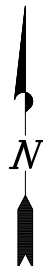
FRAM OPERATING, LLC

WELL PAD - HAMILTON 33-3-A

WELL BORE TRAJECTORY

HAMILTON 33-3-A

**LOCATED IN SECTION 33, T13S, R95W,
6th P.M., DELTA COUNTY, COLORADO.**



TIMBERLINE

(435) 789-1365

ENGINEERING & LAND SURVEYING, INC.

209 NORTH 300 WEST - VERNAL, UTAH 84078

DATE SURVEYED:
10-26-12

SURVEYED BY: A.F.

SHEET

DATE DRAWN:
7-08-13

DRAWN BY: M.W.W.

6A

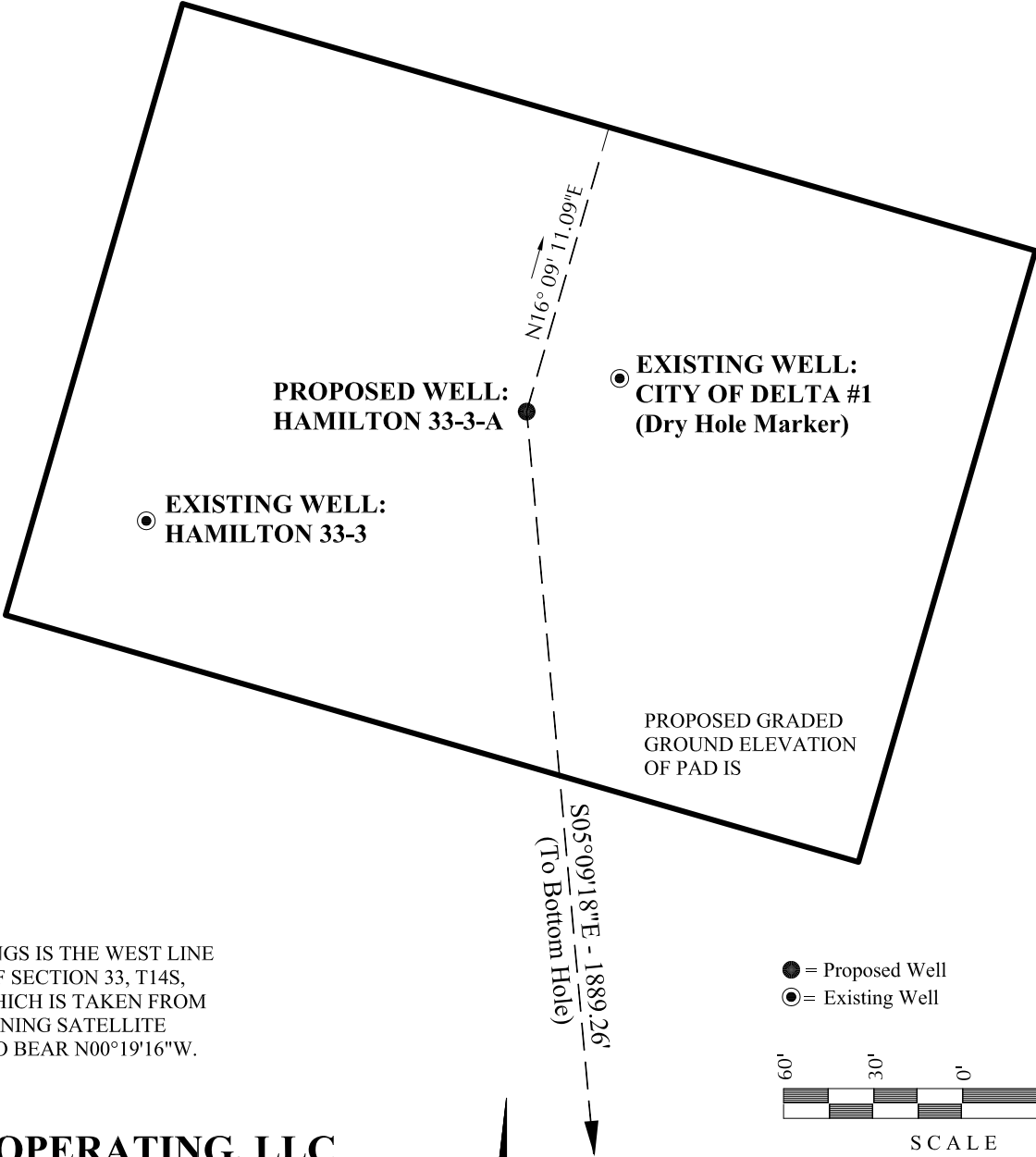
SCALE: 1" = 500'

Date Last Revised:

OF 18

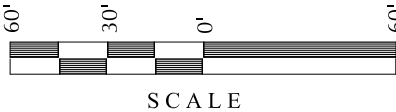
WELL NAME	SURFACE POSITION					BOTTOM HOLE				
	NAD83		NAD27		FOOTAGES	NAD83		NAD27		FOOTAGES
	LATITUDE	LONGITUDE	LATITUDE	LONGITUDE		LATITUDE	LONGITUDE	LATITUDE	LONGITUDE	
HAMILTON 33-3-A	38°53'07.30" 38.885360°	108°01'35.69" 108.026580°	38°53'07.36" 38.885378°	108°01'33.44" 108.025956°	382' FNL 484' FWL	38°52'48.70" 38.880195°	108°01'33.55" 108.025986°	38°52'48.77" 38.880213°	108°01'31.30" 108.025362°	2263' FNL 643' FWL
HAMILTON 33-3	38°53'06.93" 38.885259°	108°01'37.31" 108.027032°	38°53'07.00" 38.885277°	108°01'35.07" 108.026407°	419' FNL 355' FWL					
CITY OF DELTA #1	38°53'07.41" 38.885391°	108°01'35.29" 108.026470°	38°53'07.47" 38.885409°	108°01'33.04" 108.025846°	370' FNL 515' FWL					

RELATIVE COORDINATES - From Surface Position to Bottom Hole		
WELL NAME	NORTH	EAST
HAMILTON 33-3-A	-1881.6'	169.8'



BASIS OF BEARINGS IS THE WEST LINE OF THE NW 1/4 OF SECTION 33, T14S, R95W, 6th P.M. WHICH IS TAKEN FROM GLOBAL POSITIONING SATELLITE INFORMATION TO BEAR N00°19'16\"W.

- = Proposed Well
- ⊙ = Existing Well



FRAM OPERATING, LLC

WELL BORE TRAJECTORY

**WELL - HAMILTON 33-3-A
LOCATED IN SECTION 33, T13S, R95W,
6th P.M., DELTA COUNTY, COLORADO.**

TIMBERLINE (435) 789-1365
ENGINEERING & LAND SURVEYING, INC.
209 NORTH 300 WEST - VERNAL, UTAH 84078

DATE SURVEYED: 10-26-12	PHOTOS TAKEN BY: A.F.	SHEET 6B OF 18
DATE DRAWN: 11-19-12	DRAWN BY: T.J.R.	
SCALE: 1" = 1000'	Date Last Revised: 7-08-13 M.W.W.	