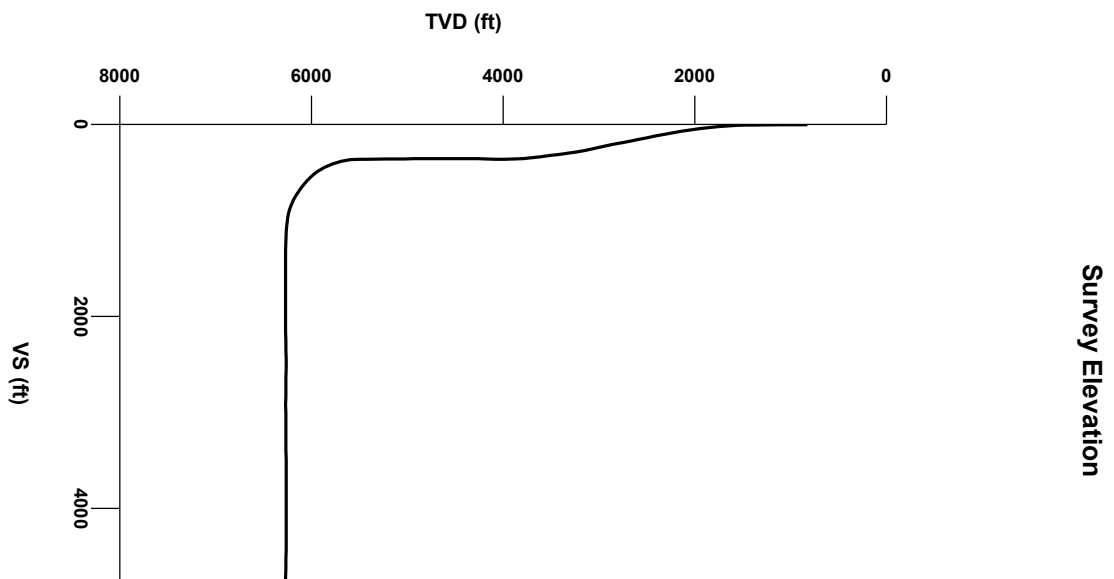
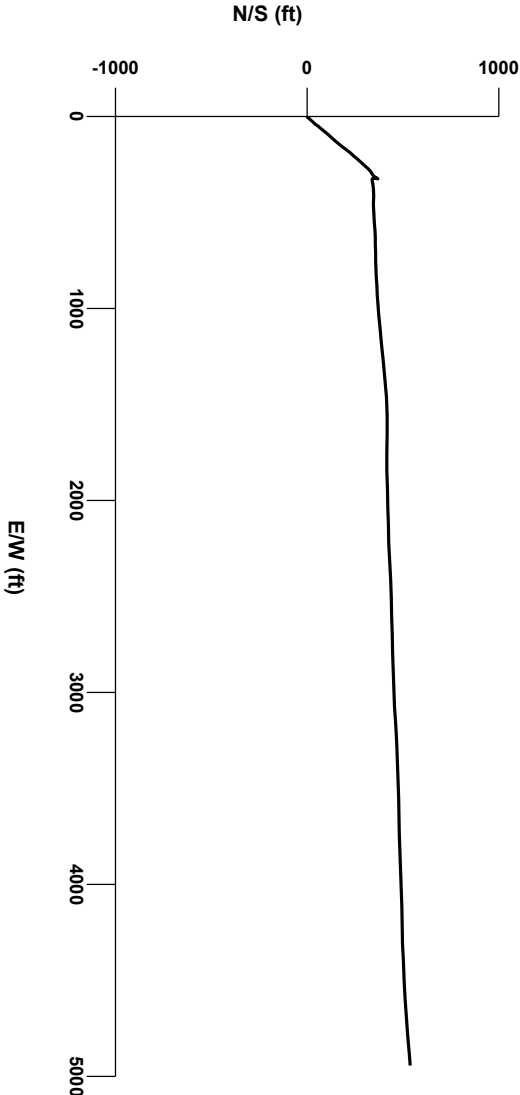


LOG created using LPLOT VH Version 3.0, February 11, 2013, Copyright (C) 1999-2009 Pason Systems Corp.

OPERATOR: NOBLE ENERGY INC.
WELL: ROHN LB22-62HN
LOCATION: SEC 21, T9N, R60W
COUNTY: WELD
STATE: COLORADO
SPOT: 650' FSL, 735' FWL
ELEVATION: GE: 4,982'; KB: 5,006'
FIELD: WILDCAT
SPUD DATE: 02/04/2013
TD DATE: 02/10/2013
DATES LOGGED: 02/05/2013 - 02/10/20113
DEPTHS LOGGED: 1,000' - 10,617'
LOGGERS: BRAD WILSON, JOHN T. READY
DRILLING FLUID: WATER, MUD, POLY
DRILLING RIG: H&P 322
API: # 05-123-36293
LOG TYPE: HORIZONTAL
SCALE: 1:240 (5 inches per 100 feet)
REMARKS: WELLSITE GEOLOGICAL SERVICES PROVIDED BY COLUMBINE LOGGING INC.



Survey Plan



6000

Chalk

Marl

Shaly Siltstone

Silty Shale

ENGINEERING SYMBOLS

▲

Casing

▲

Casing

◻

Connection

⊗

Connection Gas

↖

Arrow

⬛

Midnight Depth

➔

Arrow

GAS

0

UNITS

2500

C1

0

PPM

250000

C2

0

PPM

250000

C3

0

PPM

250000

C4

0

PPM

250000

ROP

0

MIN/FT

500

DEPTH (FEET)

5530

40

50

60

70

80

90

5600

10

20

30

40

50

328

1320u

602u

C1 86.0%

C2 3.4%

C3 6.3%

C4 4.3%

1419u

1432u

224

CUTTINGS LITHOLOGY

GAMMA RAY

50

CPS

250

TVD

ft

5300

6000

100% SILTY SH: m gy-mgybm occ v dk gy, firm-sft, sbdky-sbply, rthy sl sily tex

127

100% SILTY SH: m gy-mgybm occ lt gy, firm-hd, sl sft, sbdky-sbply, rthy sl sily occ v sily tex; tr snay ss

100% SILTY SH: m gy-mgybm sft, sbdky-sbply, rthy sl sily oc

MD 5551'

INC 0.13°

AZM 193.84°

TVD 5496.51'

MD 5646'

INC 6.11°

AZM 87.98°

TVD 5591.33'

Resumed Drilling from 5,537' MD

10:03 HRS on 2/6/2013

COLUMBINE LOGGING INC.

RIGGED UP ON 2/4/2013

MANNED 2-PERSON LOGGING

WITH BLOODHOUND GAS

CHROMATOGRAPH UNIT #0160

BHA #2

Bit: 8.750"

Manufacturer: NOV/Reedhyalog

Model: E1202

Serial Number: E153448

Nozzles: 5x15

Motor: 6.75"

Manufacturer: SperryDrilling

Model: SperryDrill

Serial Number: 675-1222

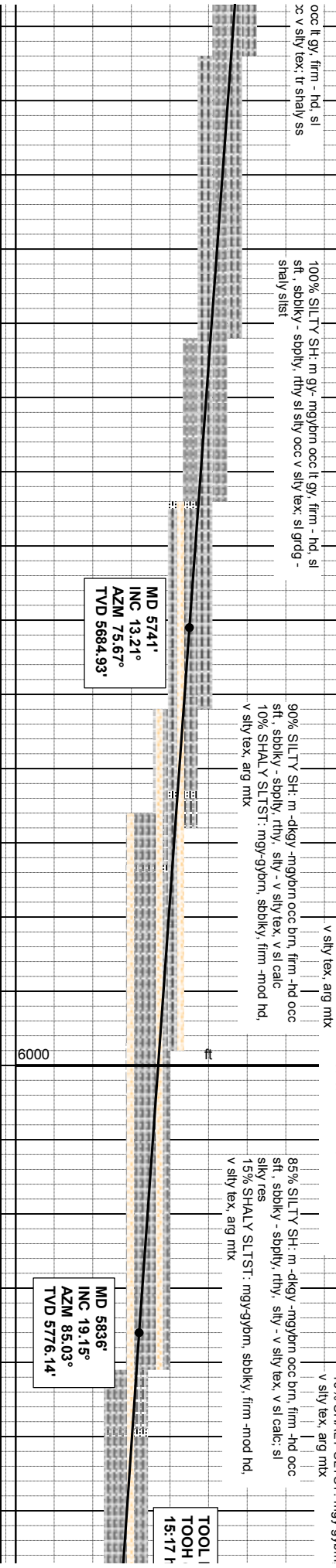
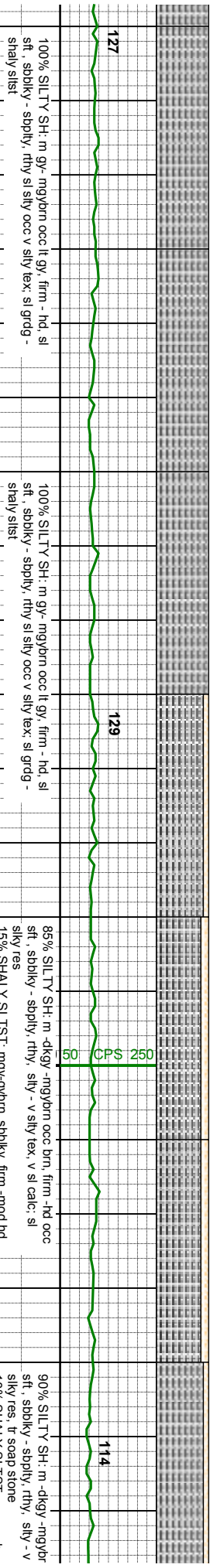
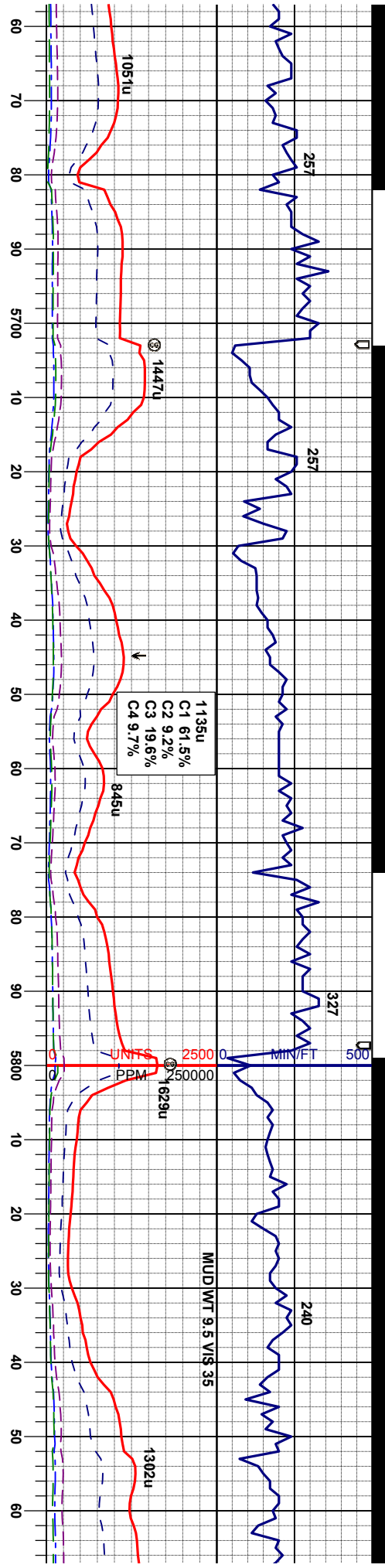
Bend: 1.75

OIL SHOWS

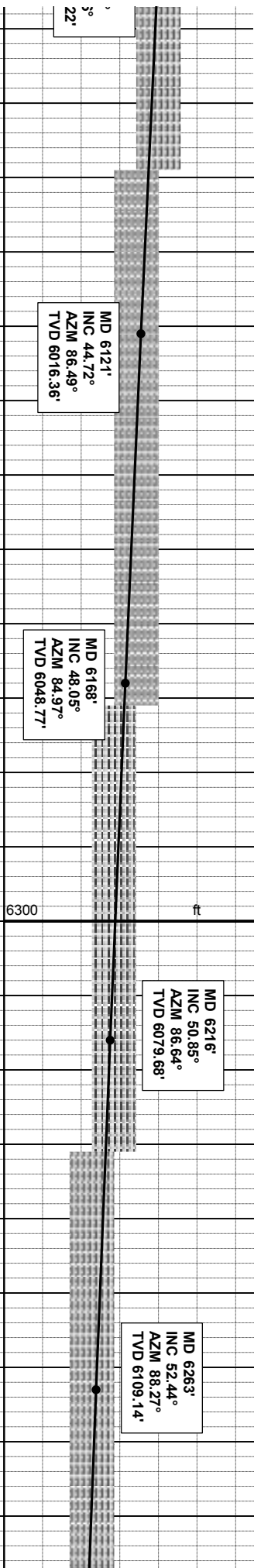
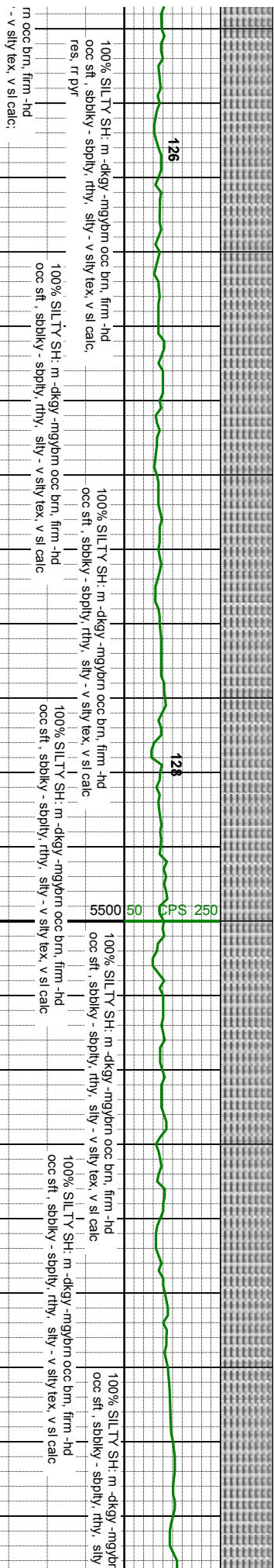
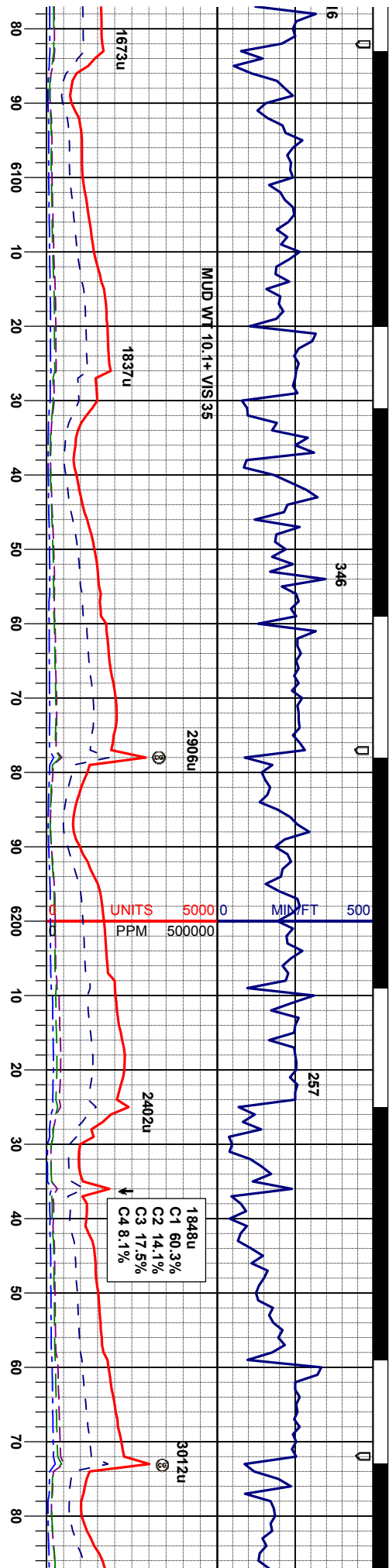
TFG 6000

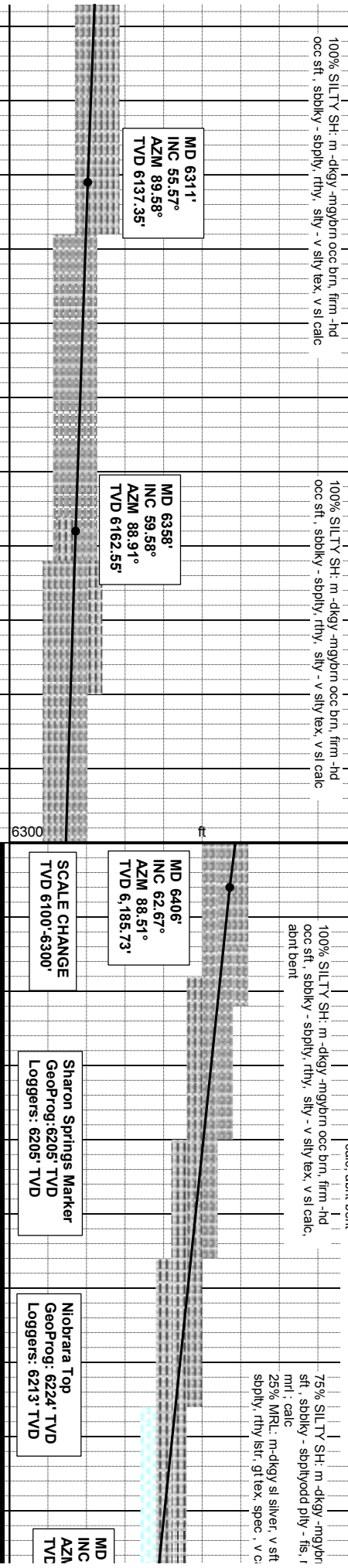
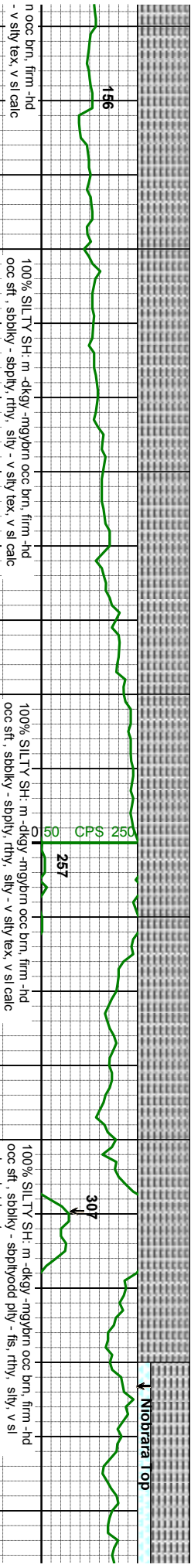
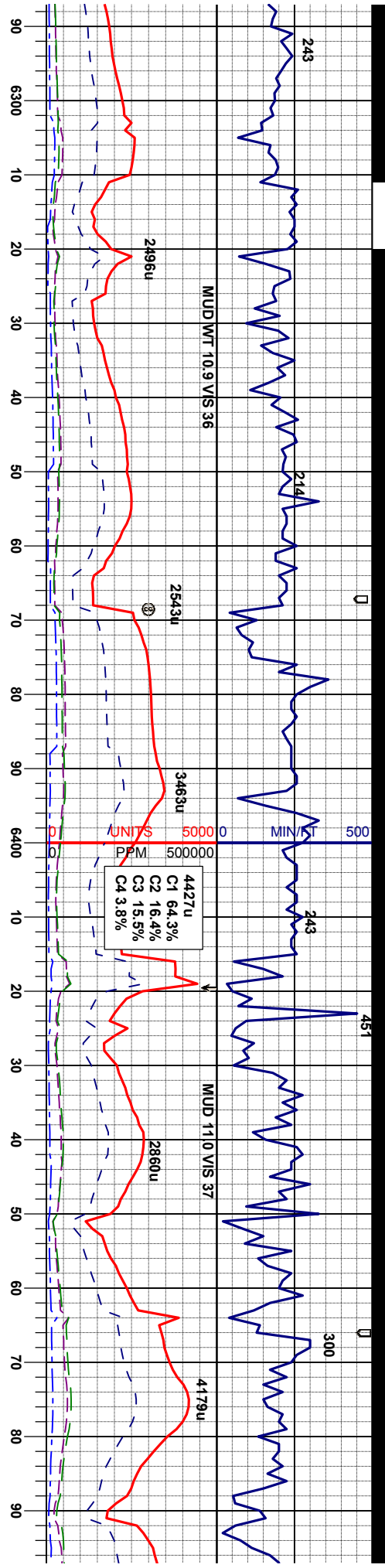
6000

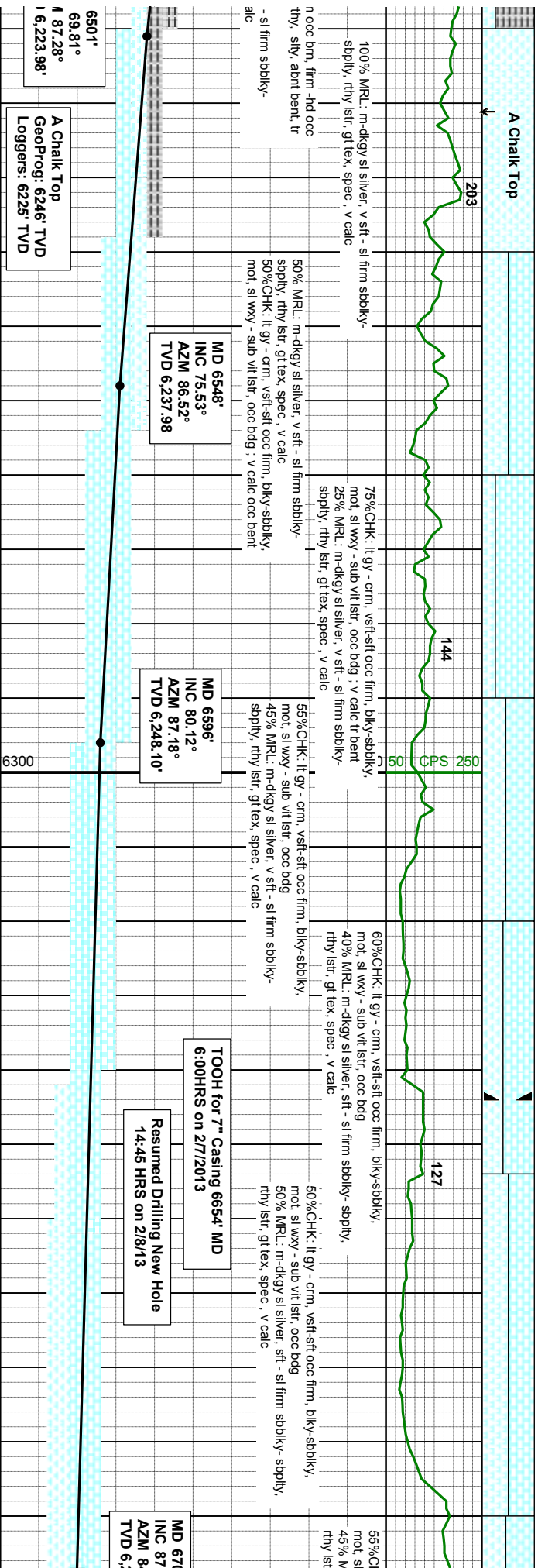
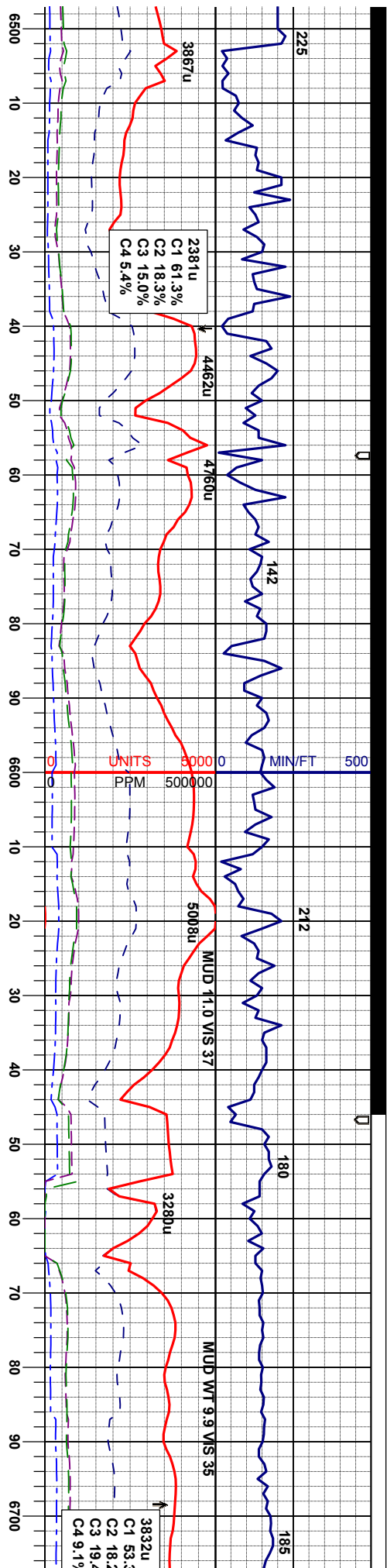
SAMPLE PHOTOS

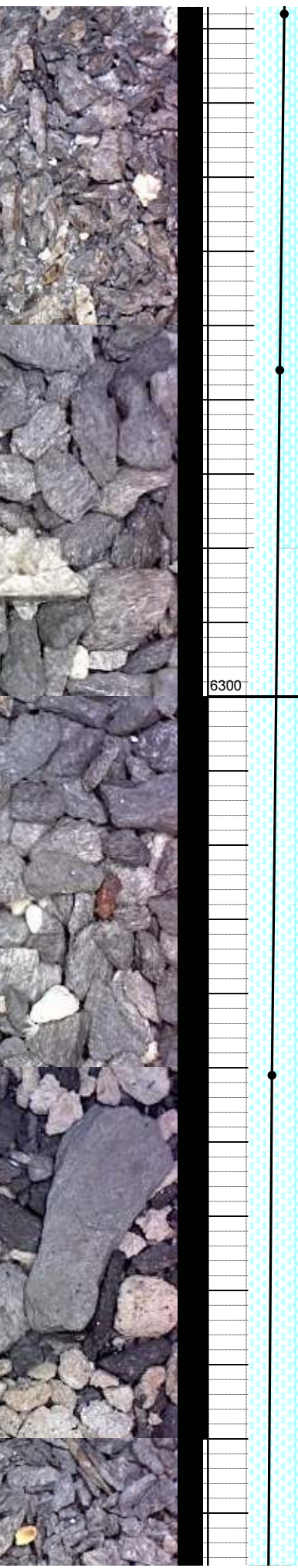
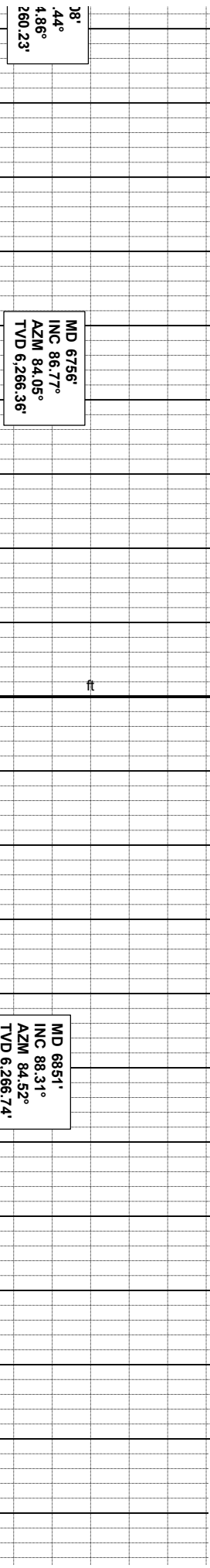
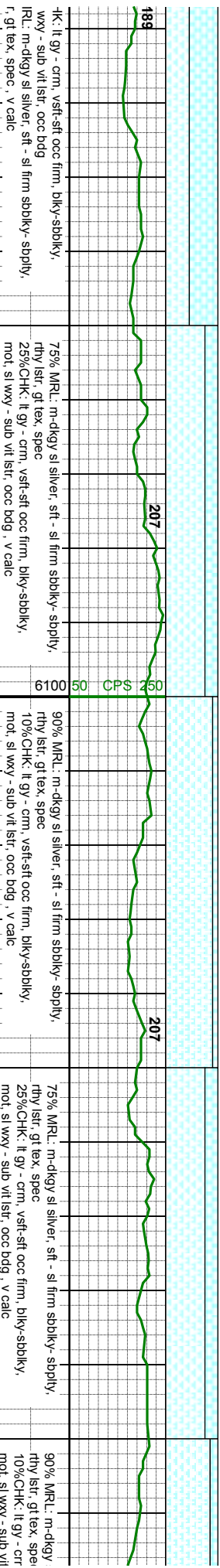
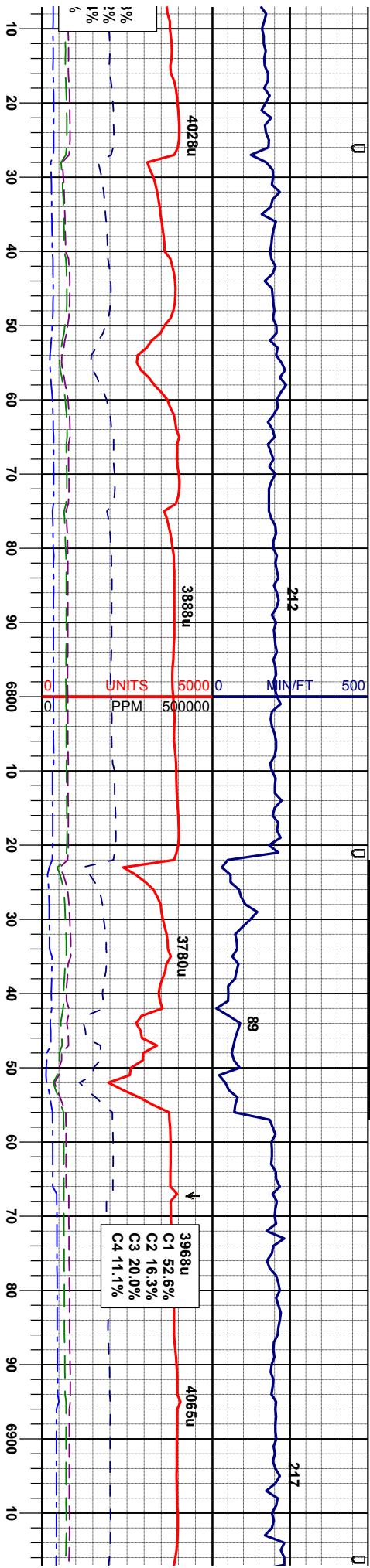


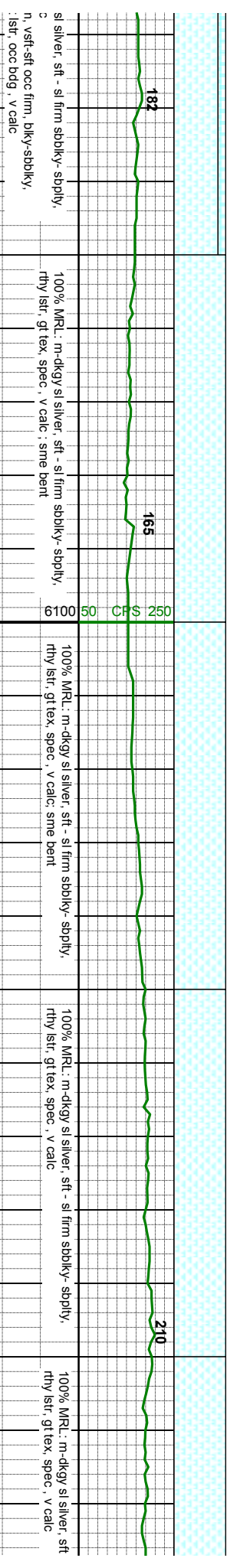
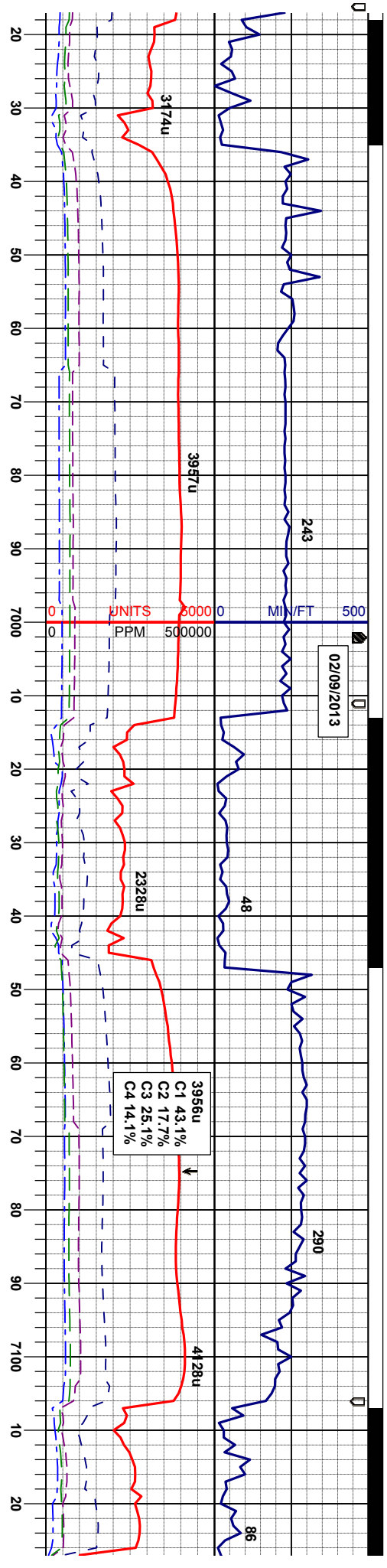








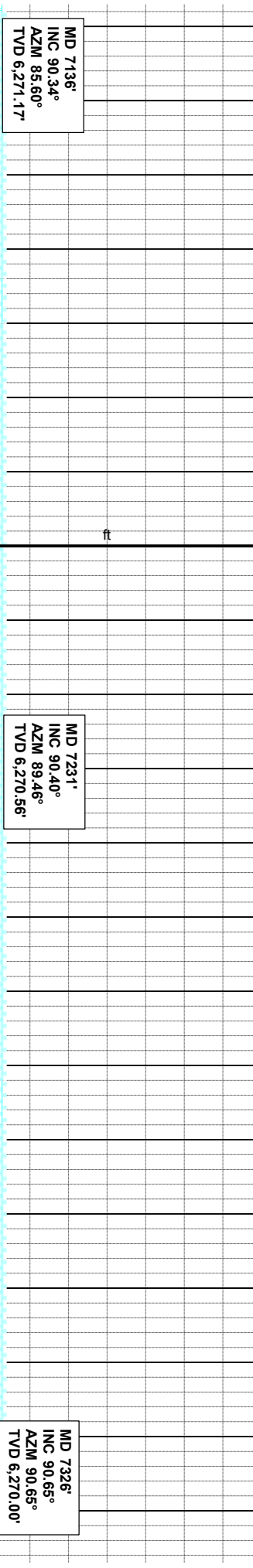
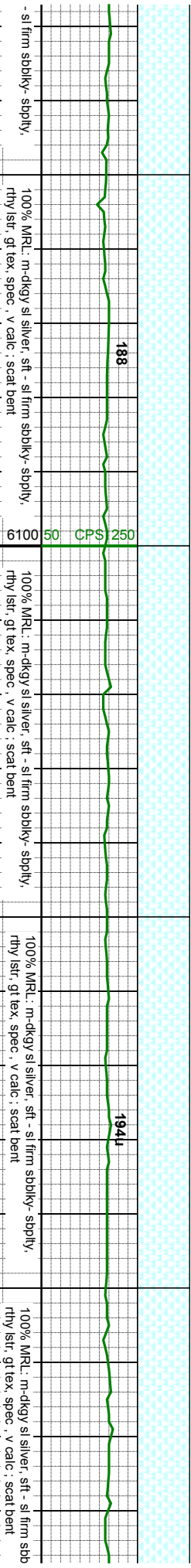
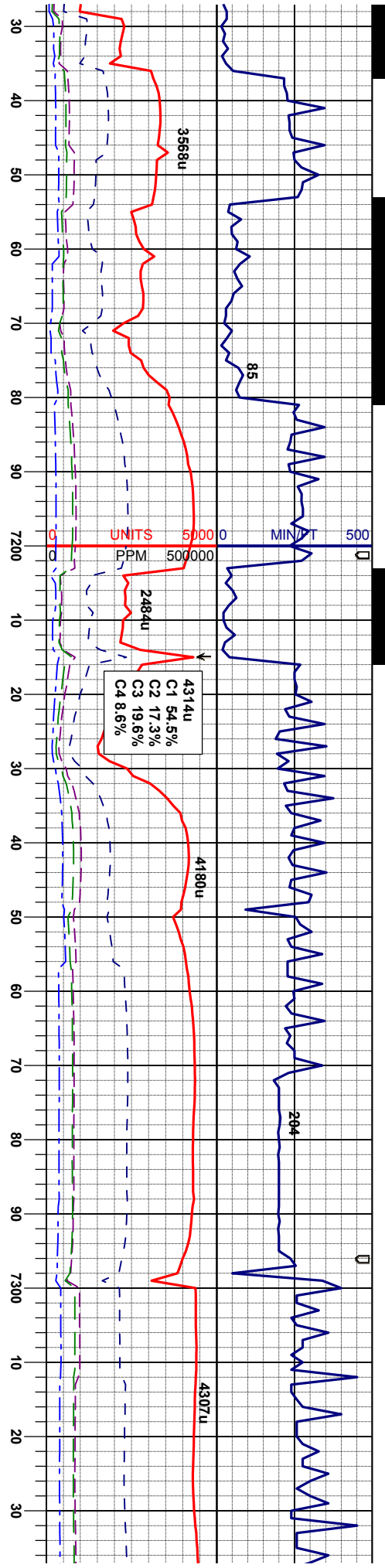




MD 6946'
INC 88.65°
AZM 84.26°
TVD 6,269.27'

MD 7041'
INC 89.35°
AZM 85.00°
TVD 6,270.92'

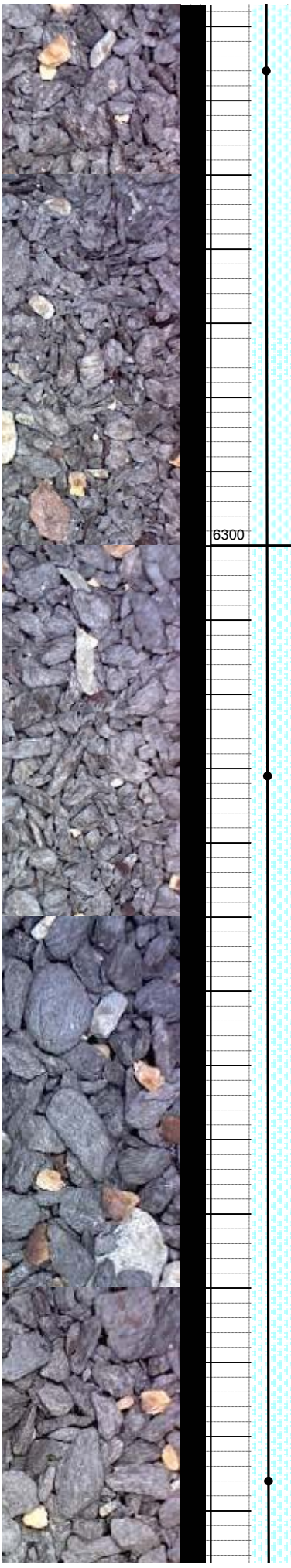


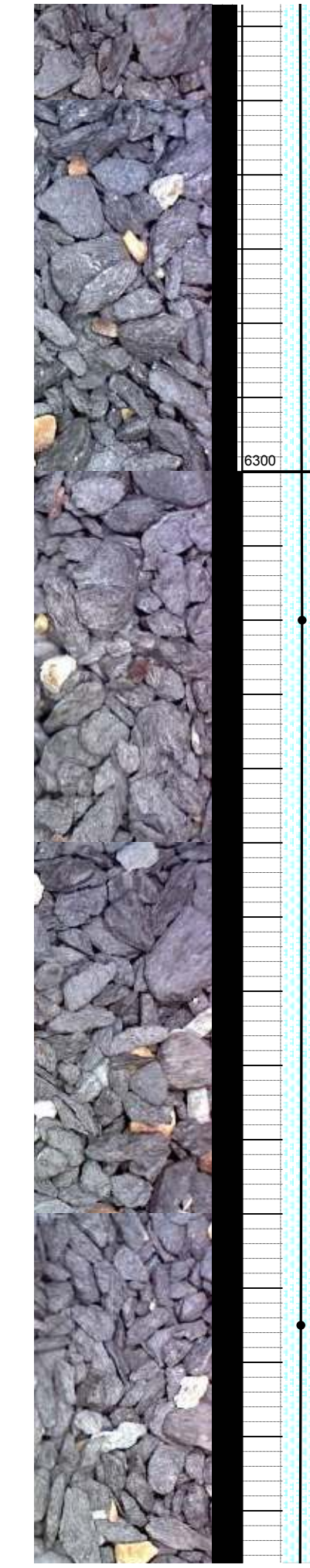
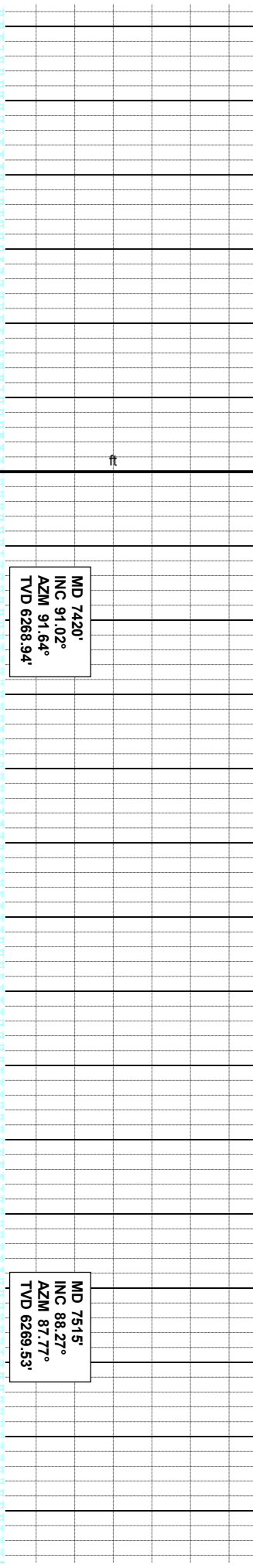
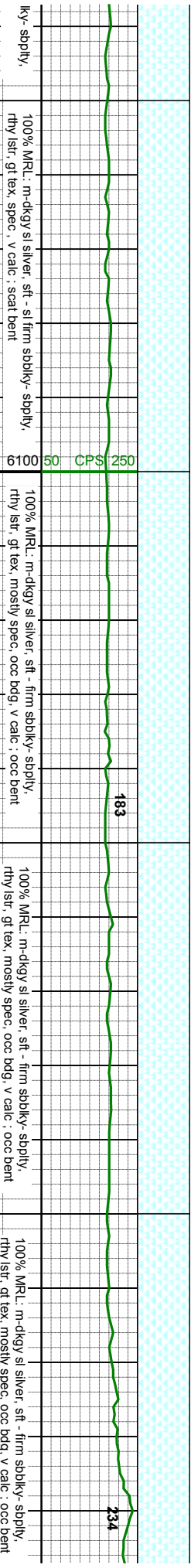
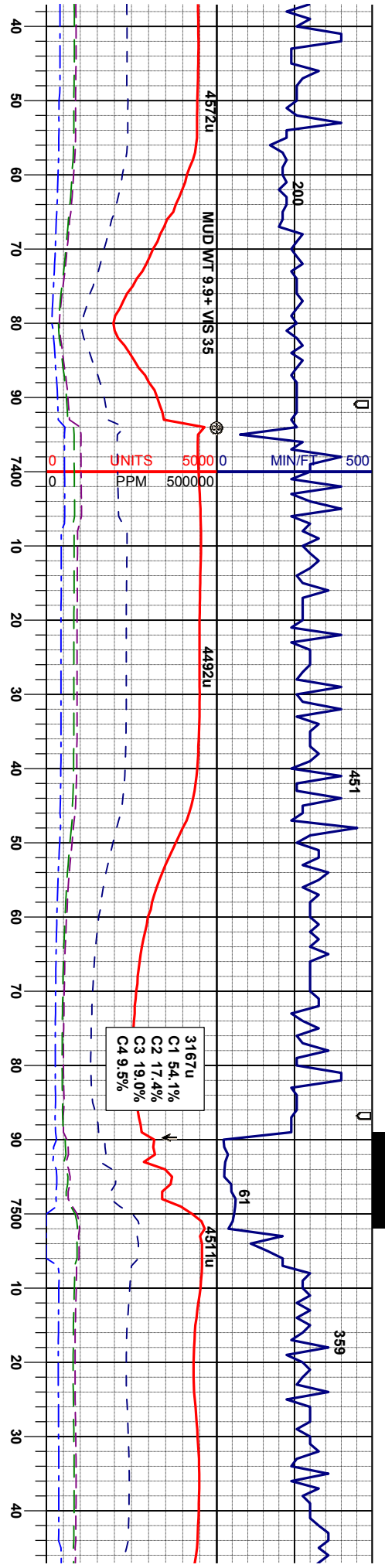


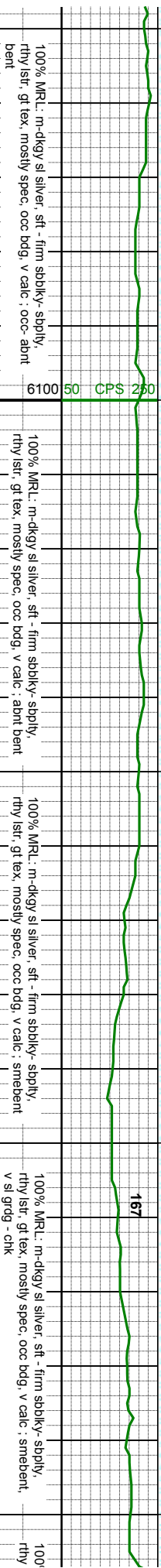
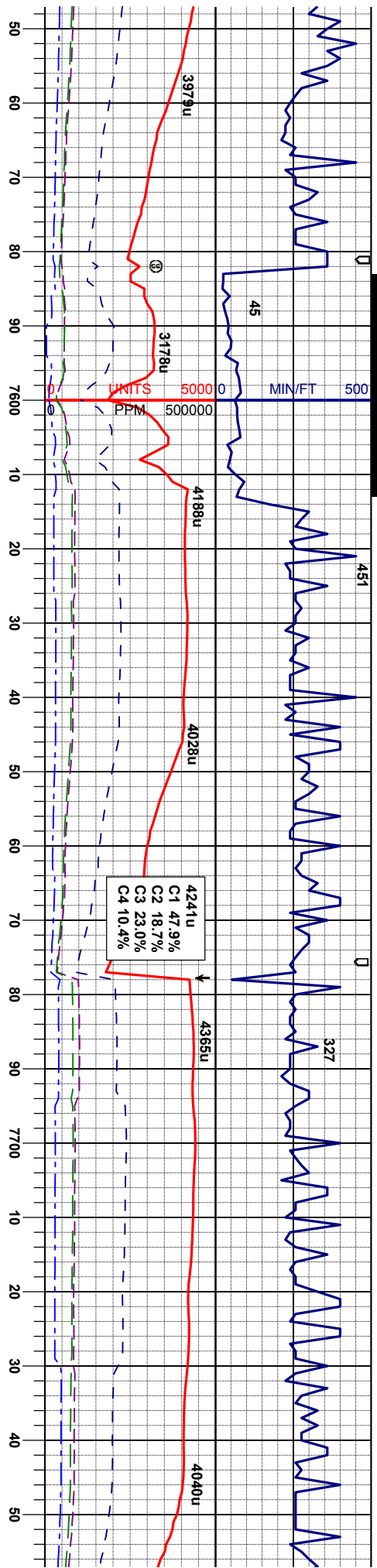
MD 7136'
INC 90.34°
AZM 85.60°
TVD 6,271.17'

MD 7231'
INC 90.40°
AZM 89.46°
TVD 6,270.56'

MD 7326'
INC 90.65°
AZM 90.65°
TVD 6,270.00'



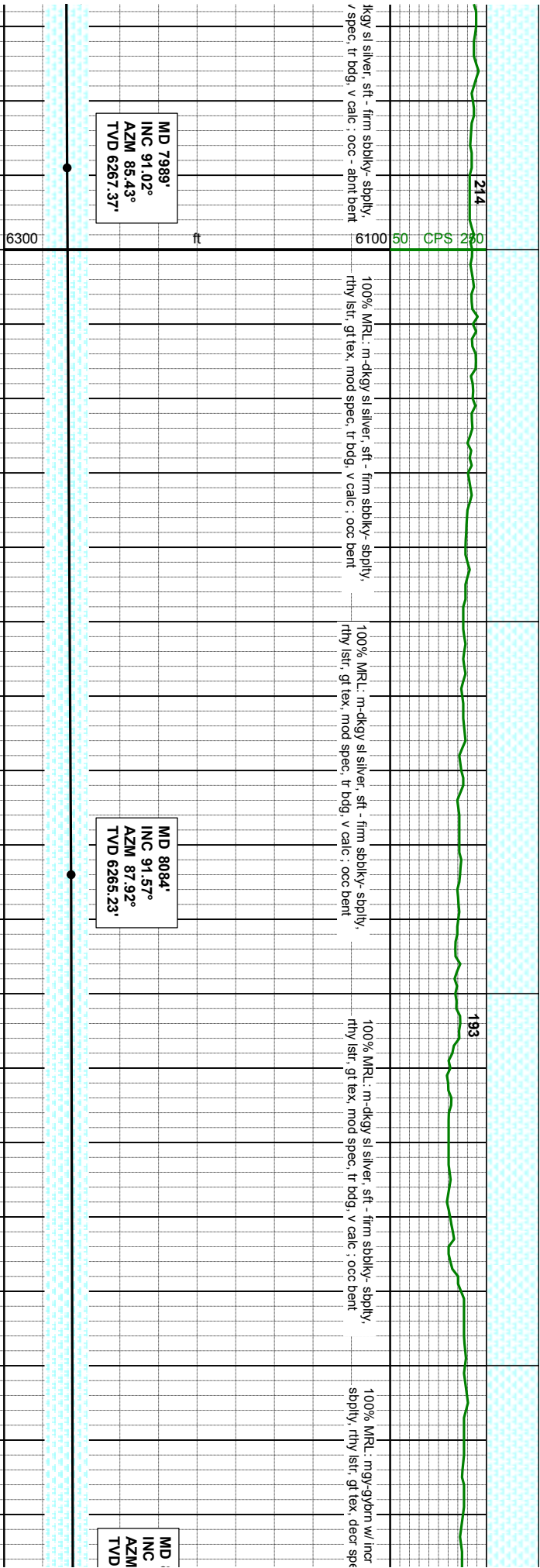
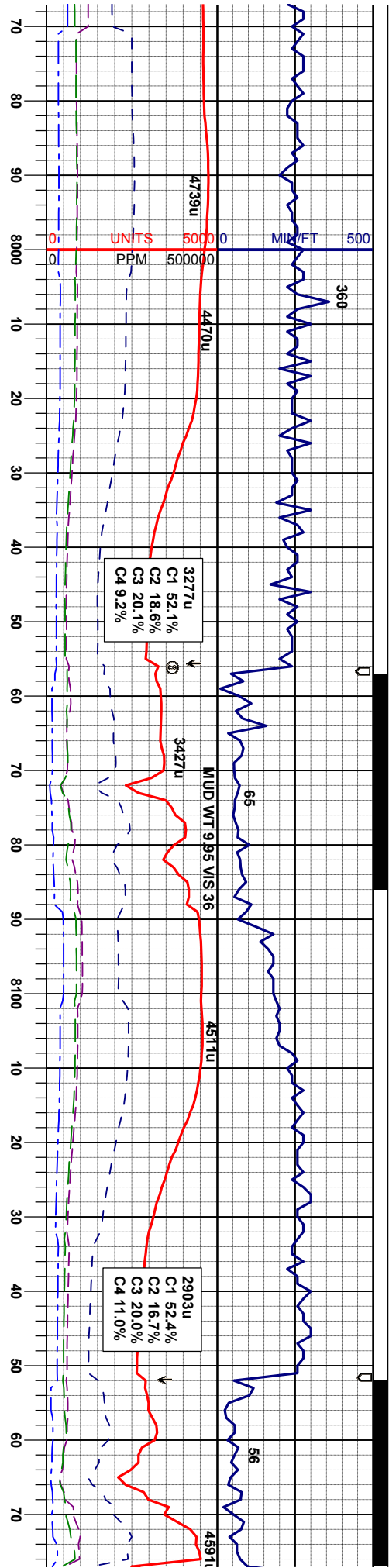


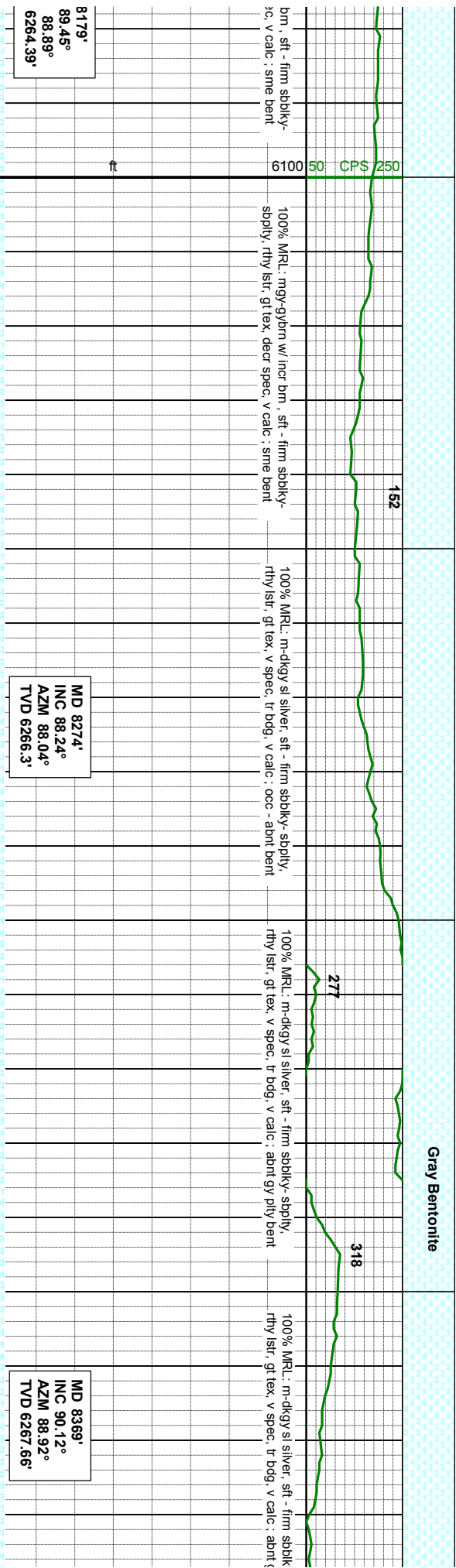
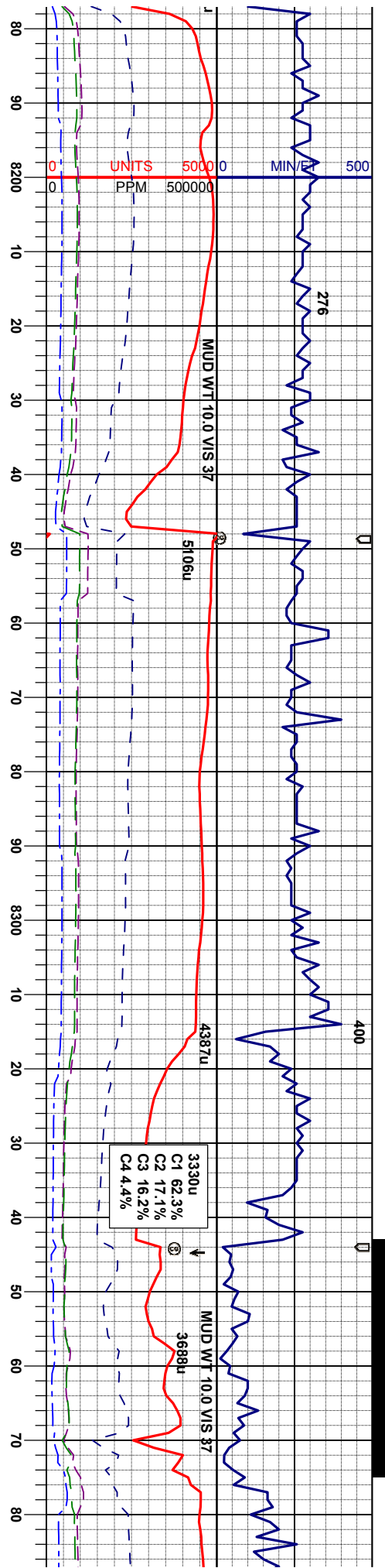


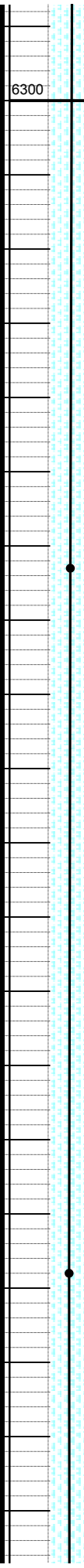
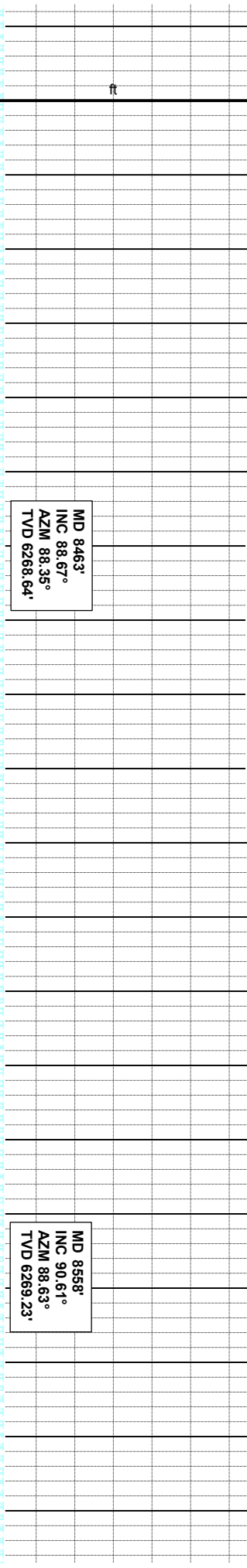
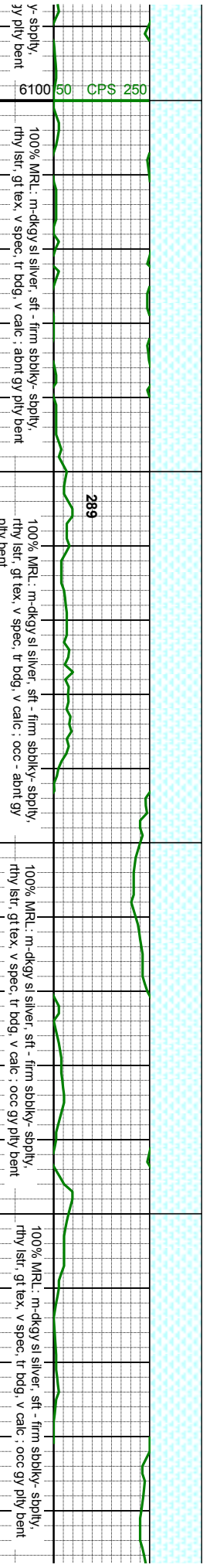
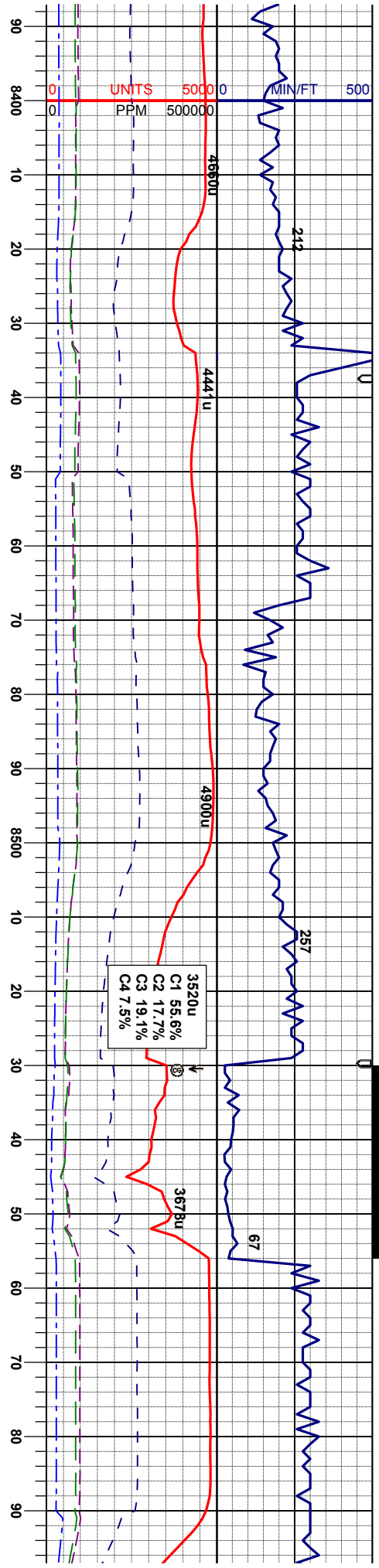
MD 7610'
INC 90.4°
AZM 89.03°
TVD 6270.63'

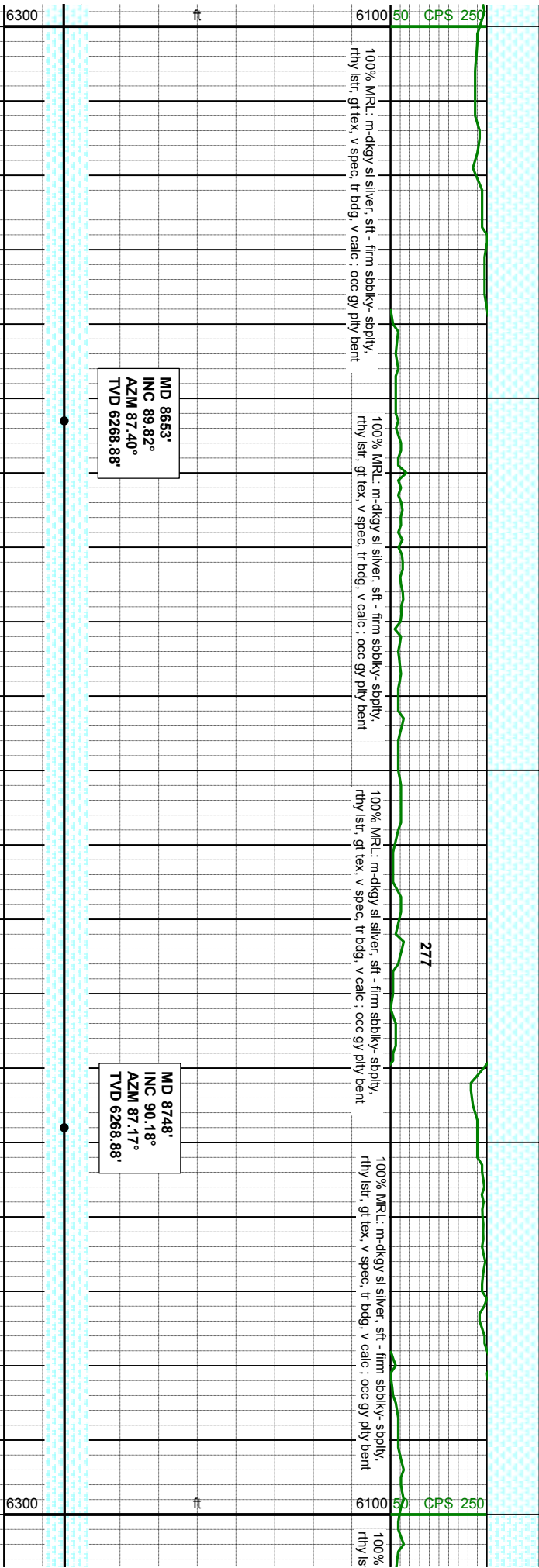
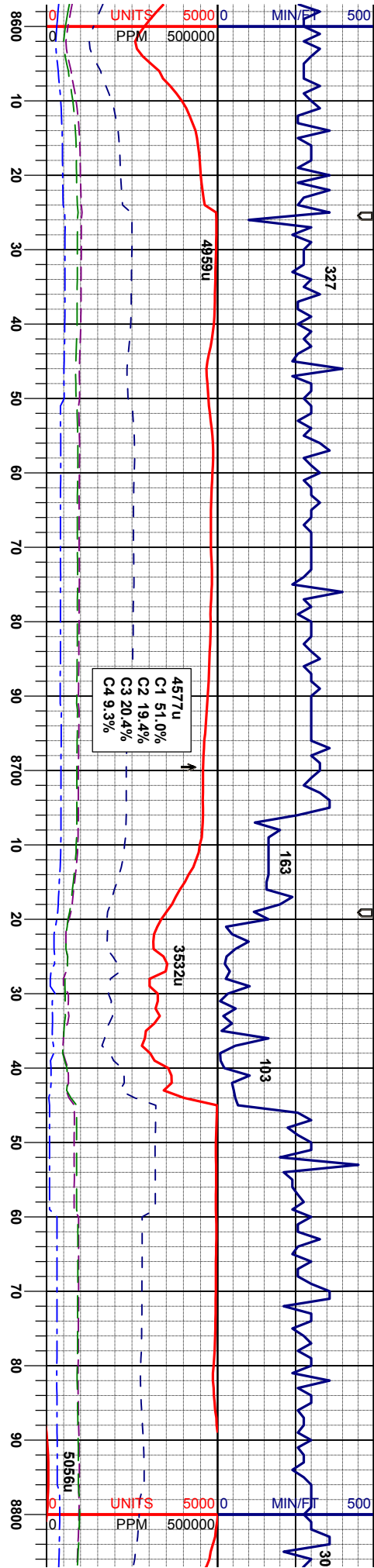
MD 7705'
INC 89.04°
AZM 88.35°
TVD 6271.09'

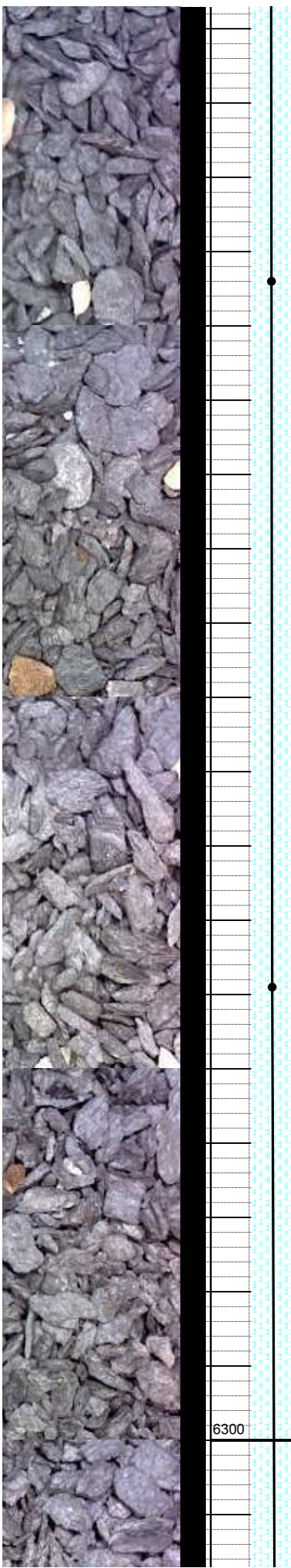
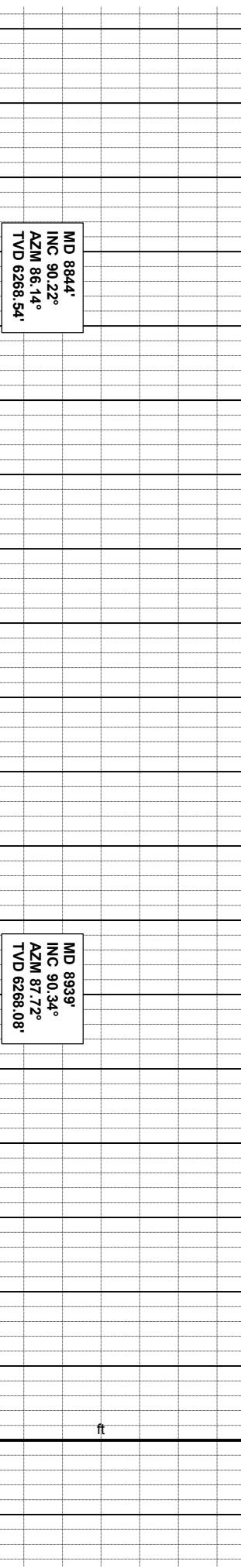
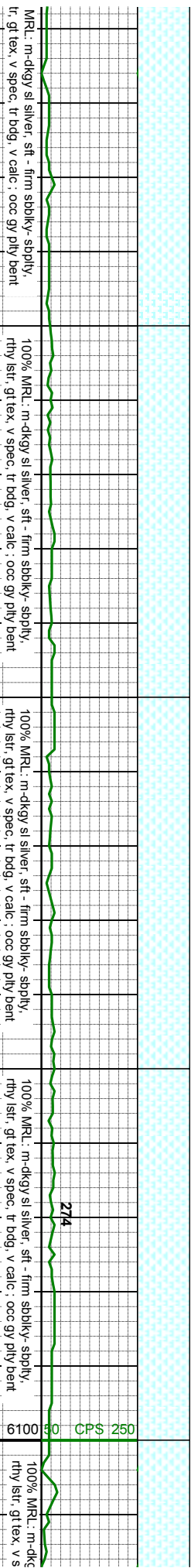
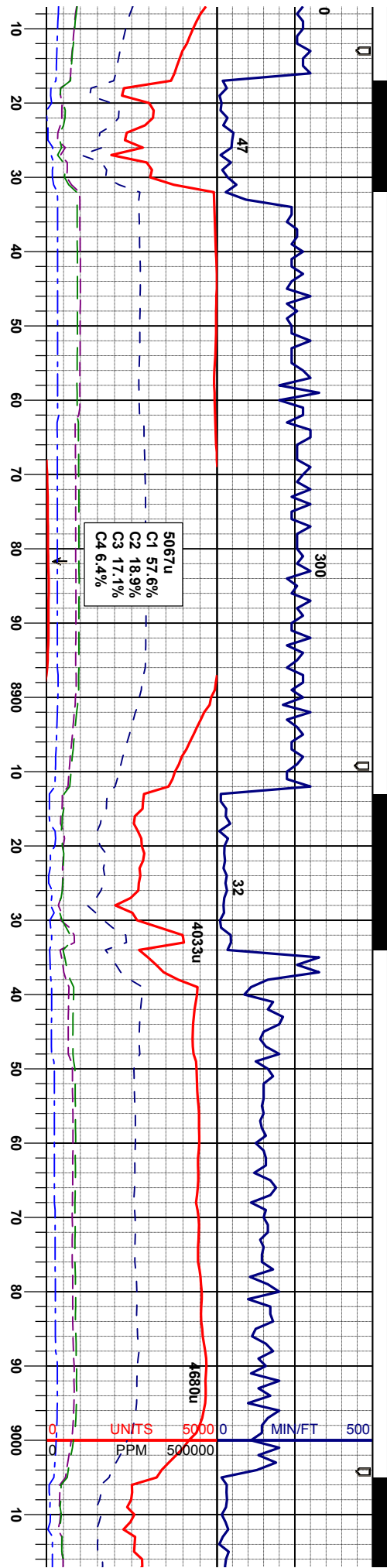


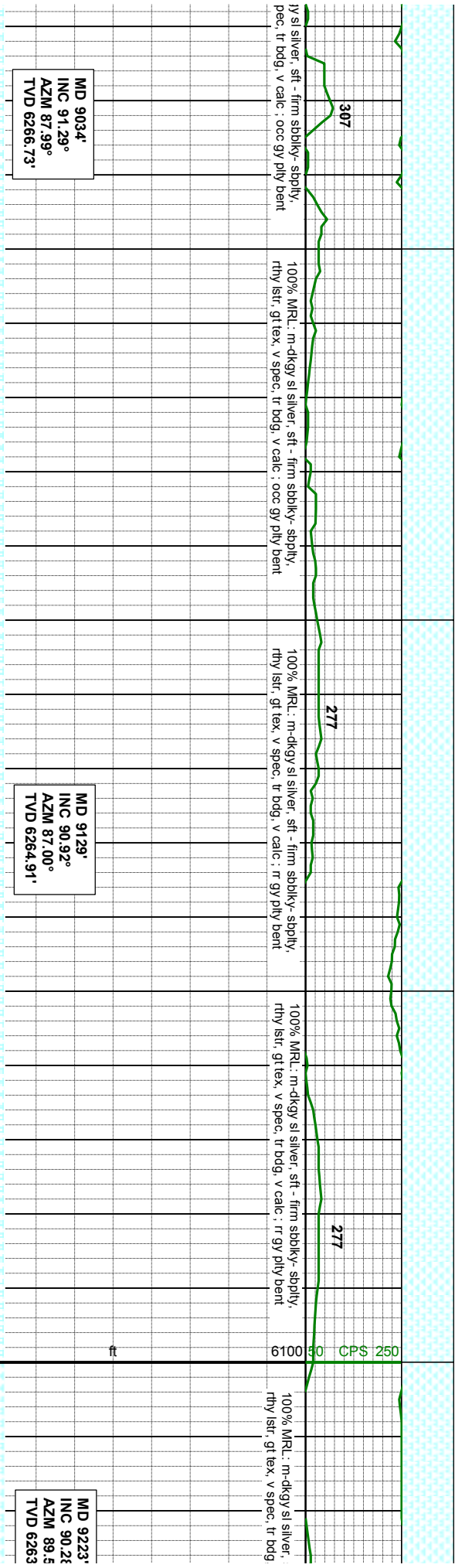
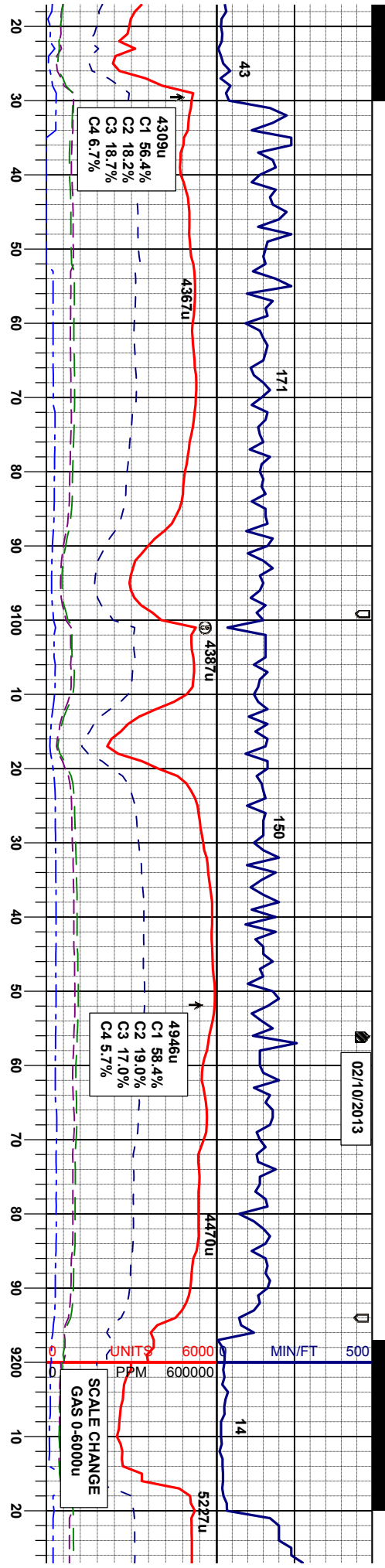


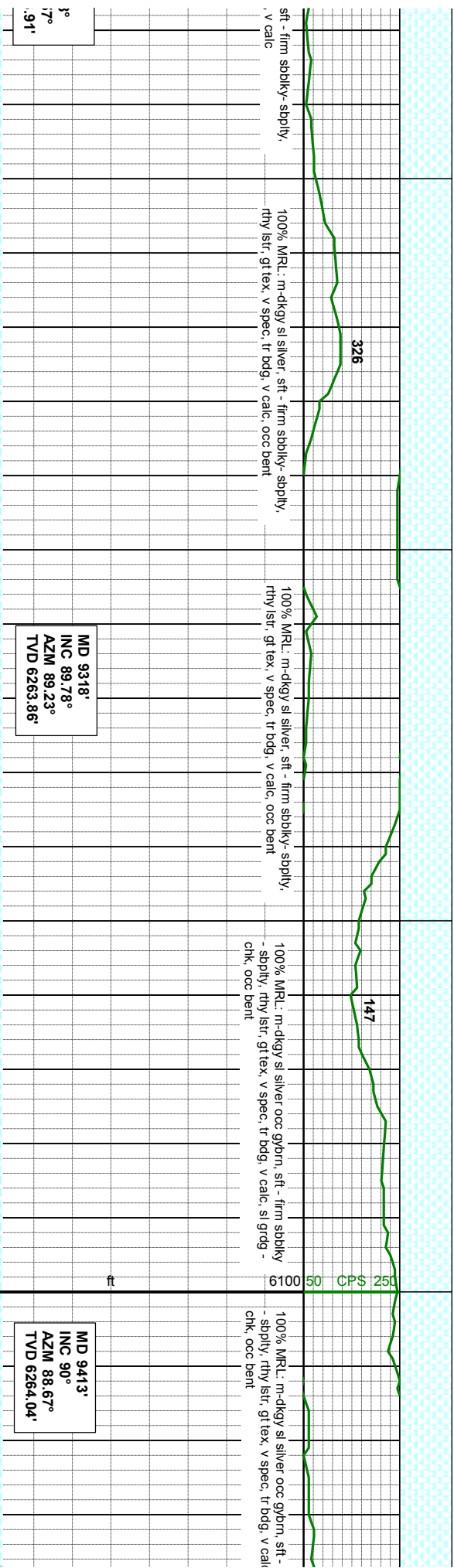
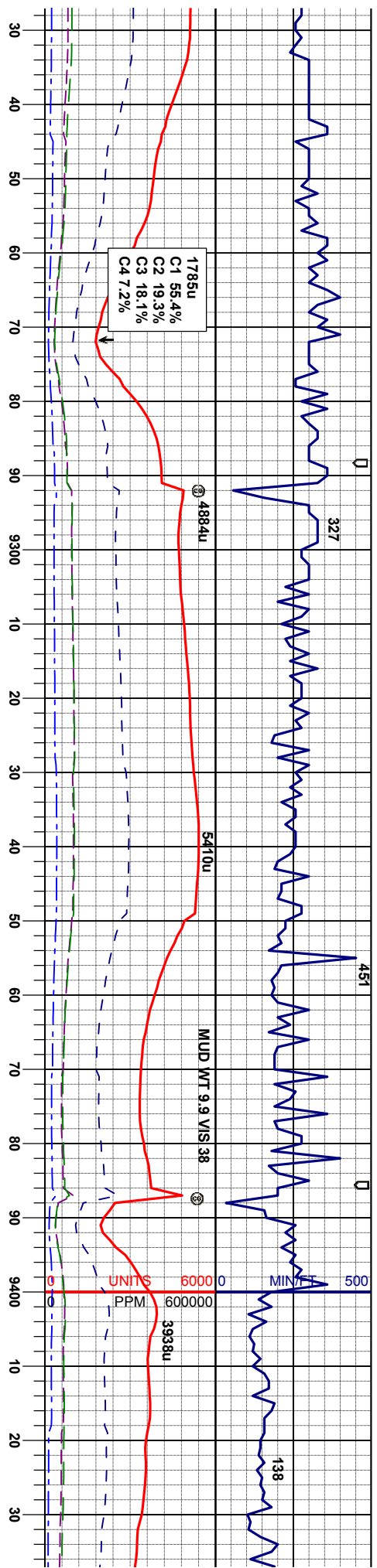


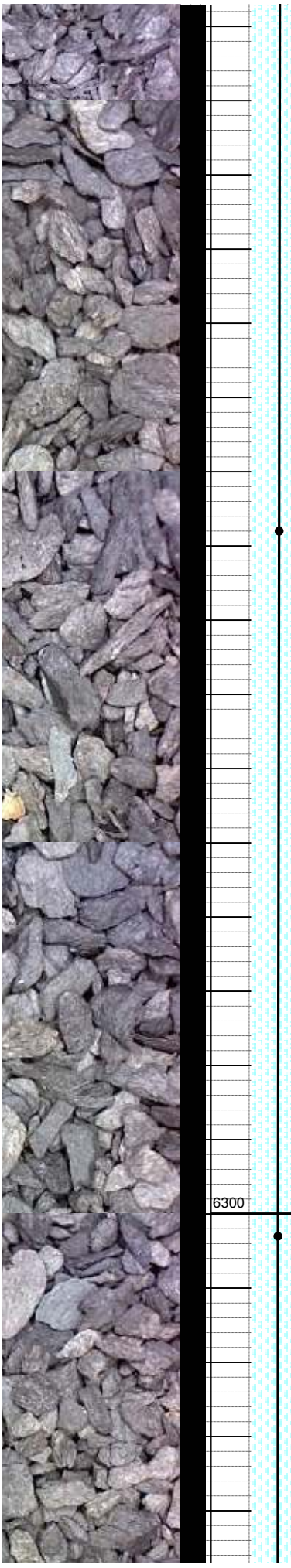
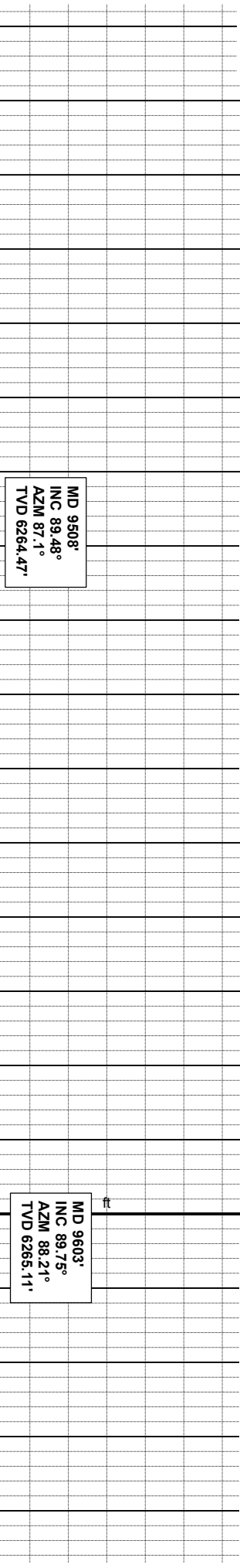
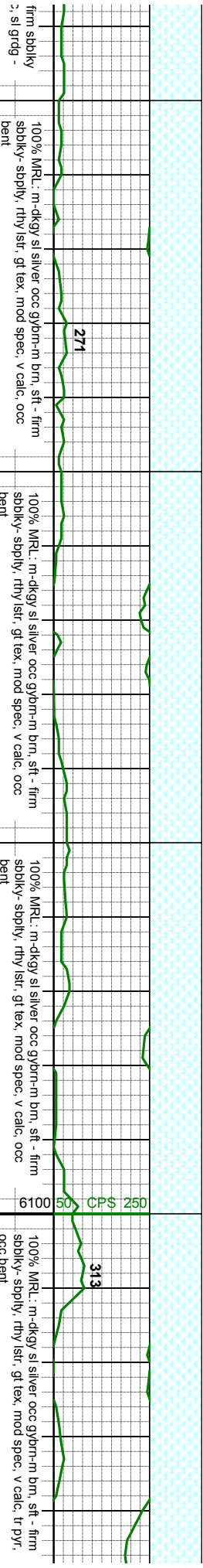
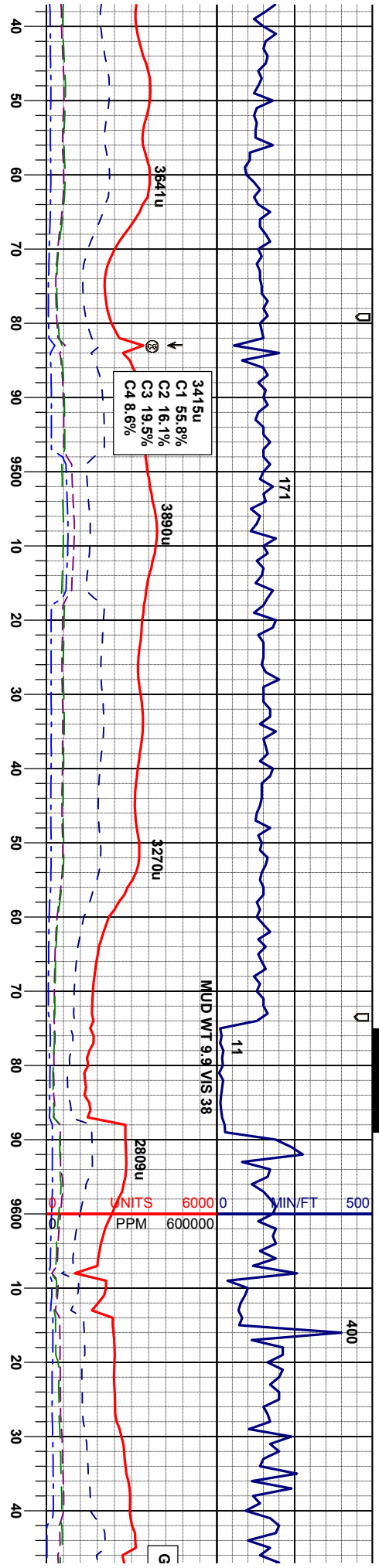




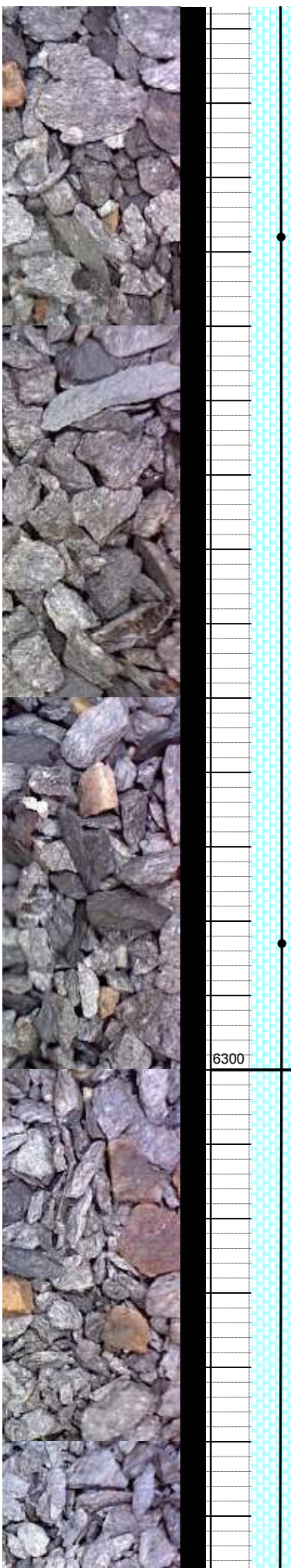
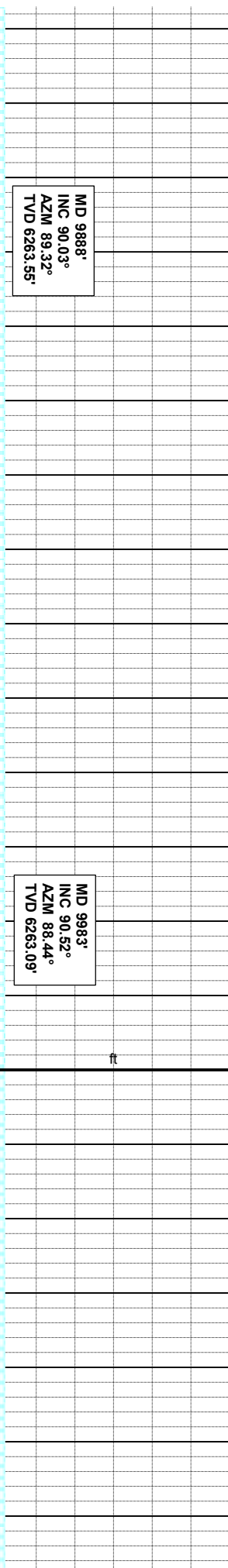
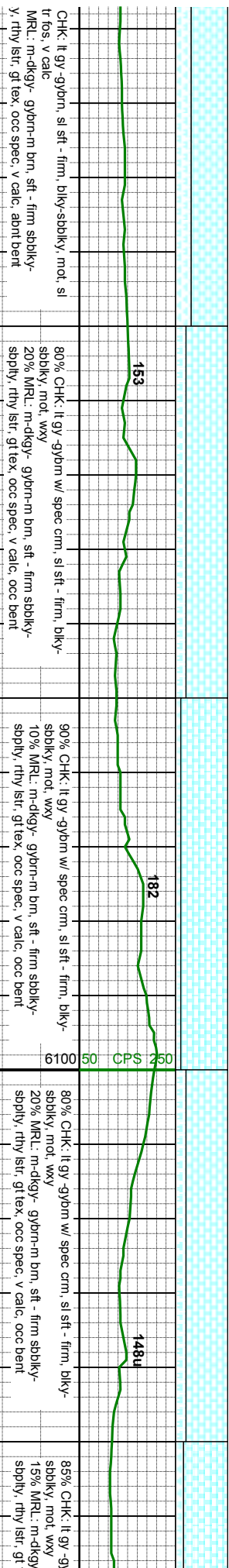
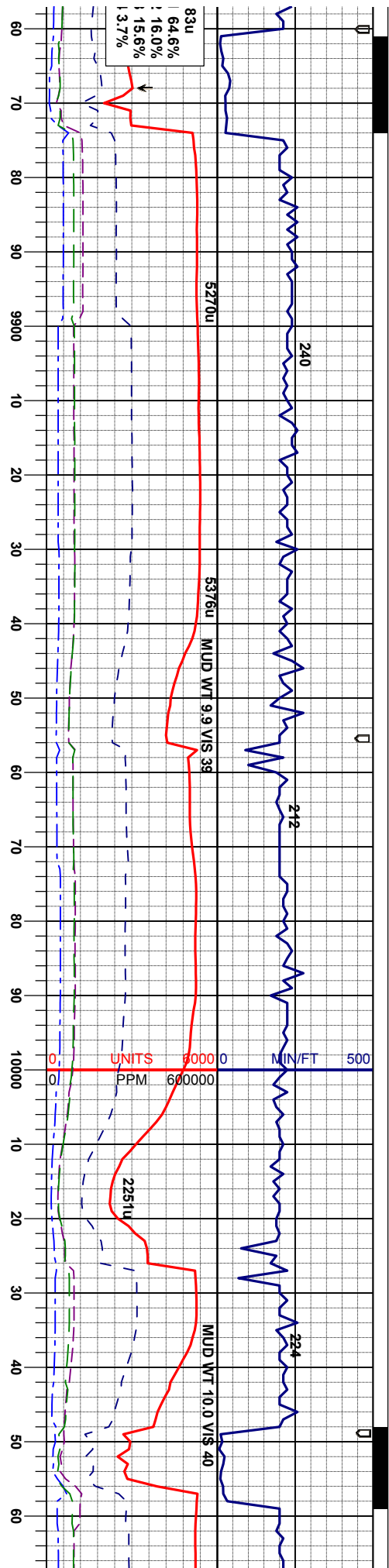


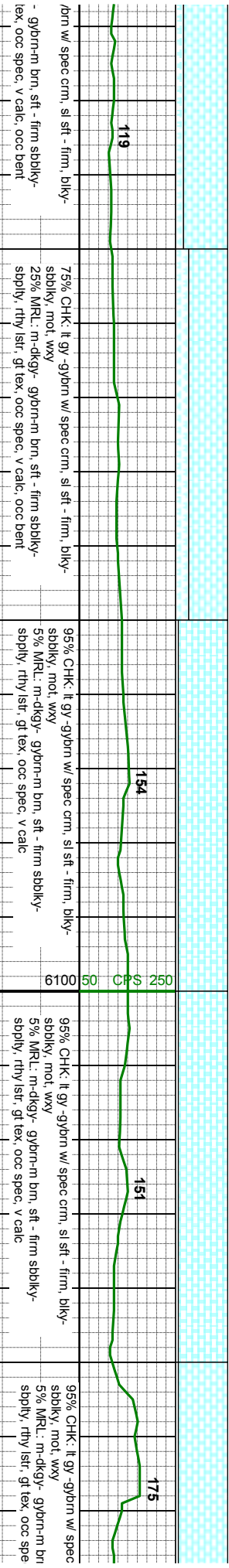
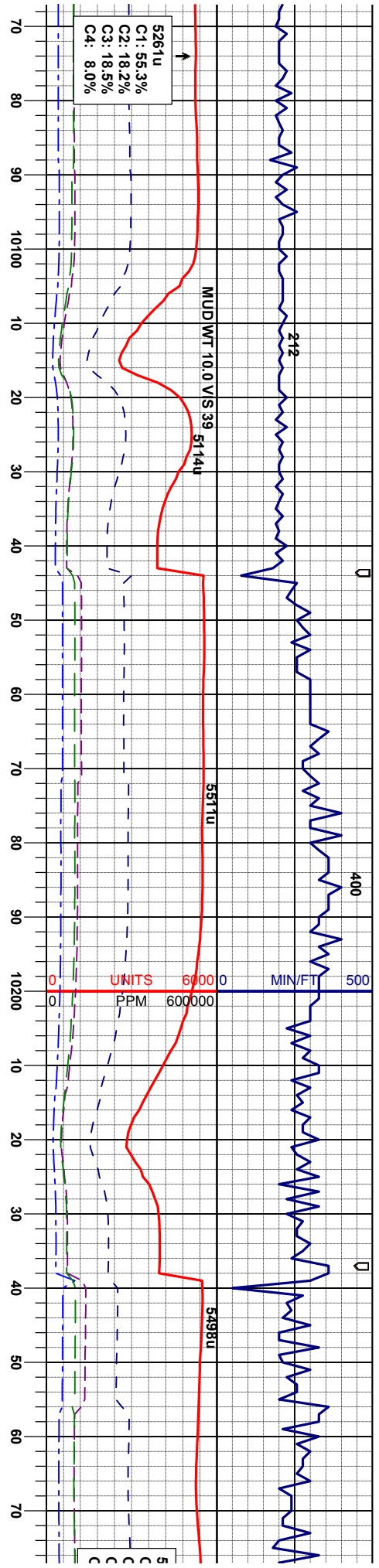












MD 10078'
INC 88.15°
AZM 87.27°
TVD 6264.19'

MD 10172'
INC 88.43°
AZM 87.28°
TVD 6266.99'

MD 10267'
INC 89.57°
AZM 87.06°
TVD 6268.65'



