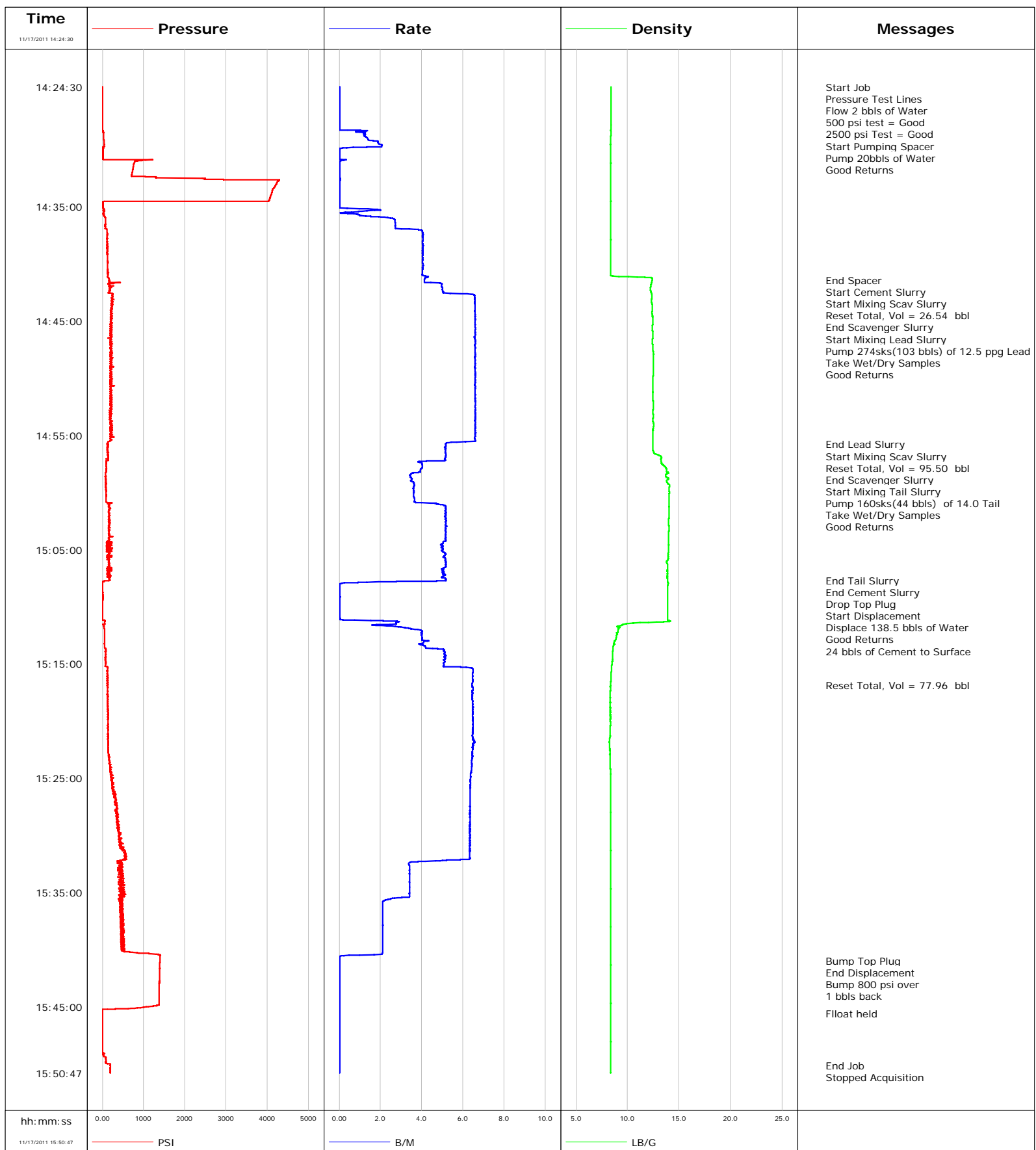


Well EF01A-34
Field North Parrachute
Engineer Jeff Patterson
Country United States

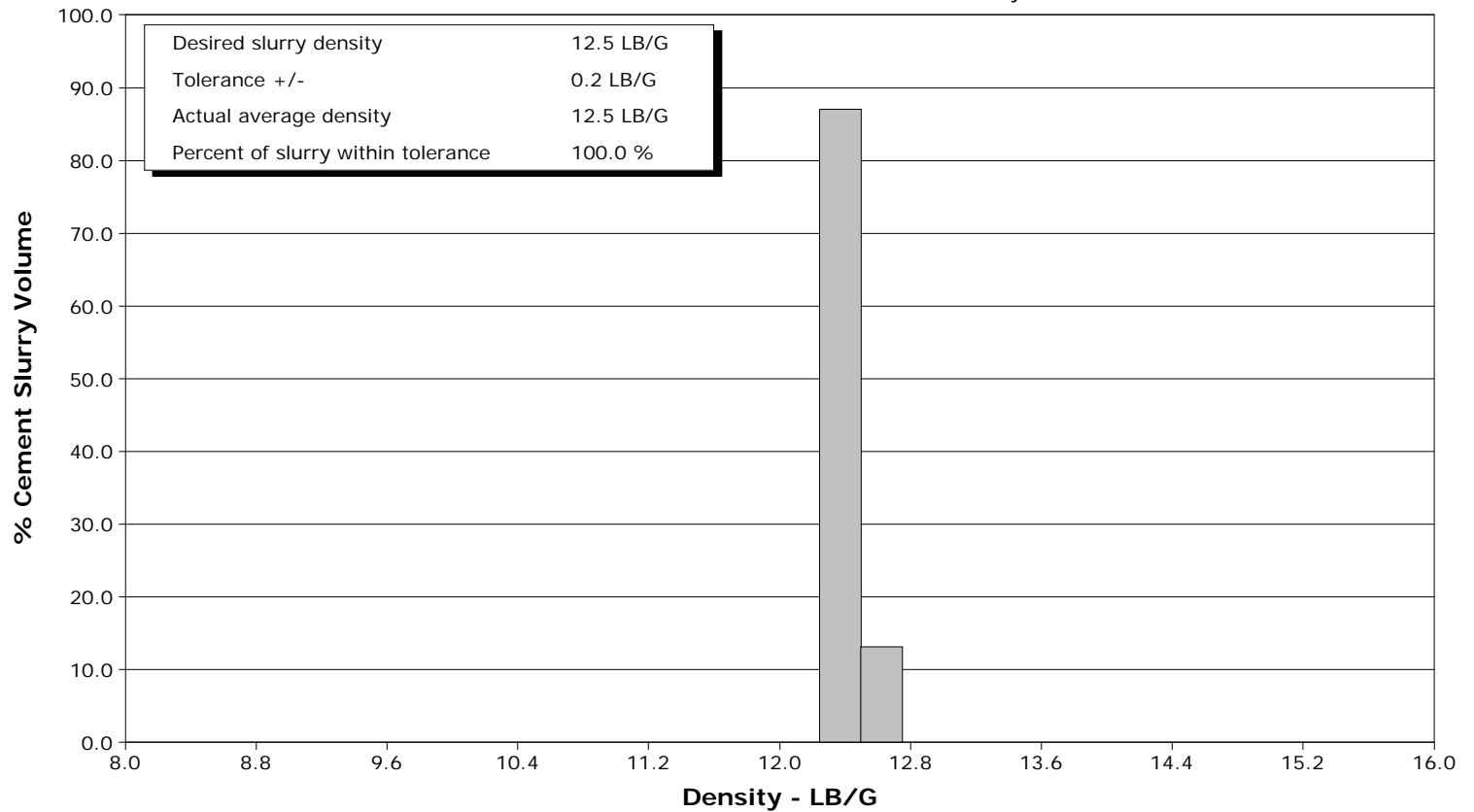
Client Encana
SIR No. BUNM-00473
Job Type 9 5/8 Surface
Job Date 11-17-2011



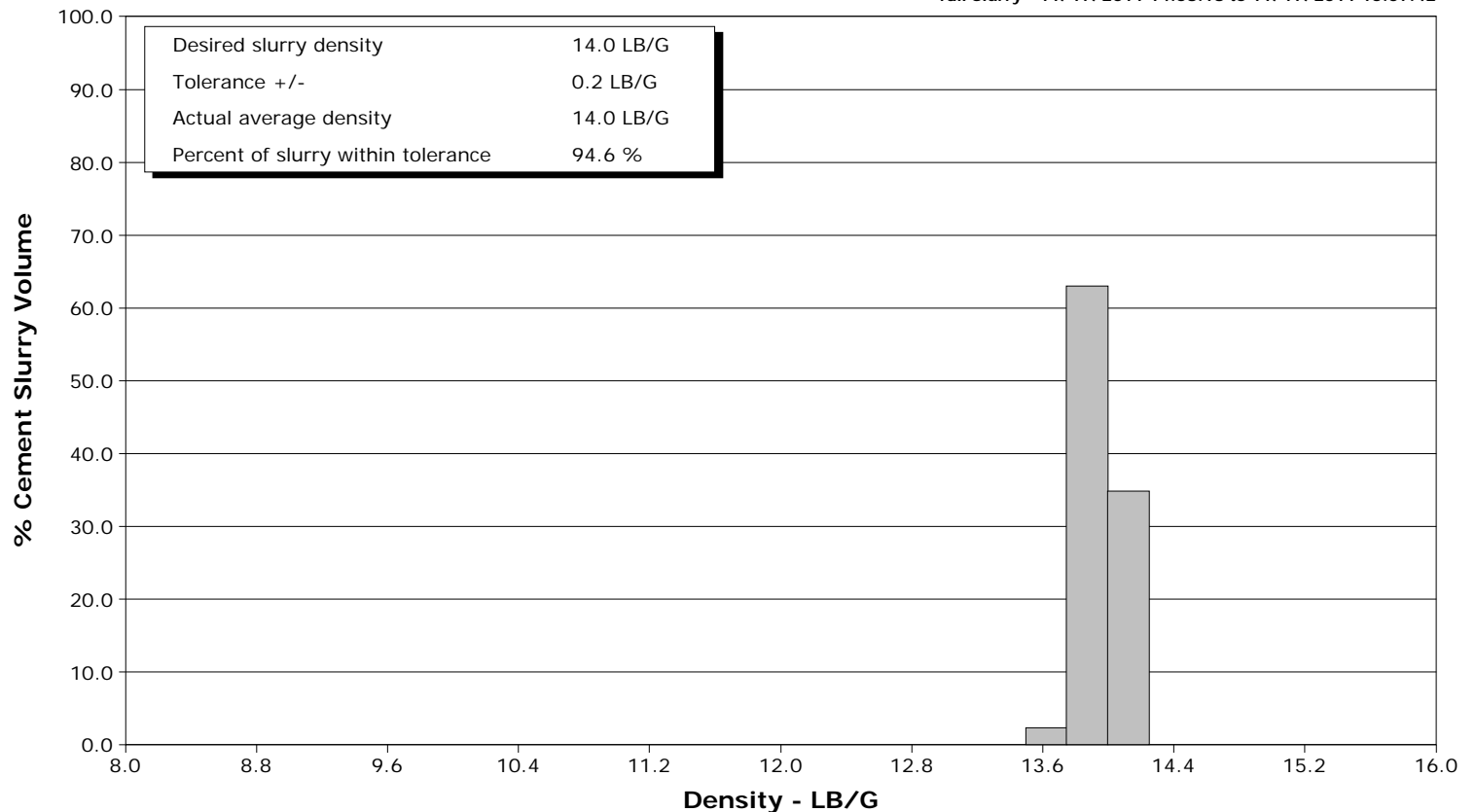
Well EF01A-34
Field North Parrachute
Engineer Jeff Patterson
Country United States

Client Encana
SIR No. BUNM-00473
Job Type 9 5/8 Surface
Job Date 11-17-2011

Lead Slurry - 11/17/2011 14:42:37 to 11/17/2011 14:55:45



Tail Slurry - 11/17/2011 14:58:18 to 11/17/2011 15:07:42





Cementing Service Report

				Customer Encana		Job Number BUNM-00473		
Well EF01A-34 EF01A-34			Location (legal) EFP27		Schlumberger Location Grand Junction, Colorado		Job Start Nov/17/2011	
Field North Parrachute		Formation Name/Type Shale		Deviation	Bit Size 12.0 in	Well MD 1835.0 ft		Well TVD 1835.0 ft
County Garfield		State/Province Colorado		BHP	BHST 100 degF	BHCT 87 degF	Pore Press. Gradient	
Well Master 0631244200		API/UWI						
Rig Name Patterson 303	Drilled For Gas	Service Via Land	Casing/Liner					
			Depth, ft	Size, in	Weight, lb/ft	Grade	Thread	
Offshore Zone	Well Class New	Well Type Development	1835.0	9.630	36.0	J-55	8RD	
			0.0	0.000	0.0			
Drilling Fluid Type		Max. Density	Plastic Viscosity	Tubing/Drill Pipe				
				Depth,	Size,	Weight,	Grade	Thread
Service Line Cementing	Job Type 9 5/8 Surface							
Max. Allowed Tub. Press 2500 psi	Max. Allowed Ann. Press	WH Connection 9 5/8	Perforations/Open Hole					
			Top,	Bottom,		No. of Shots	Total Interval	
							Diameter	
			Treat Down Casing	Displacement 188.5 bbl	Packer Type	Packer Depth		
			Tubing Vol.	Casing Vol. 142.0 bbl	Annular Vol. 112.0 bbl	Openhole Vol. 263.0 bbl		
Casing/Tubing Secured <input checked="" type="checkbox"/>	1 Hole Vol. Circulated prior to Cement <input checked="" type="checkbox"/>		Casing Tools			Squeeze Job		
Lift Pressure 908 psi			Shoe Type Guide	Squeeze Type				
Pipe Rotated <input type="checkbox"/>	Pipe Reciprocated <input type="checkbox"/>		Shoe Depth 1835.0 ft	Tool Type				
No. Centralizers	Top Plugs 1	Bottom Plugs	Stage Tool Type	Tool Depth				
Cement Head Type Single			Stage Tool Depth	Tail Pipe Size				
Job Scheduled For Nov/17/2011 11:00	Arrived on Location Nov/17/2011 11:00	Leave Location Nov/17/2011	Collar Type Float	Tail Pipe Depth				
			Collar Depth 1791.0 ft	Sqz. Total Vol.				
Date	Time 24-hr clock	Treating Pressure PSI	Flow Rate B/M	Density LB/G	Volume BBL	Message		
11/17/2011	13:47:30					Started Acquisition		
11/17/2011	14:24:30					Start Job		
11/17/2011	14:24:30	-5	0.0	8.39	0.0			
11/17/2011	14:24:32					Pressure Test Lines		
11/17/2011	14:24:32	-5	0.0	8.39	0.0			
11/17/2011	14:24:33					Flow 2 bbls of Water		
11/17/2011	14:24:33	-4	0.0	8.39	0.0			
11/17/2011	14:24:34					500 psi test = Good		
11/17/2011	14:24:34					2500 psi Test = Good		
11/17/2011	14:24:34	-5	0.0	8.39	0.0			
11/17/2011	14:24:36					Start Pumping Spacer		
11/17/2011	14:24:36	-4	0.0	8.39	0.0			
11/17/2011	14:24:38					Pump 20bbls of Water		
11/17/2011	14:24:38					Good Returns		
11/17/2011	14:24:38	-4	0.0	8.39	0.0			
11/17/2011	14:25:50	-7	0.0	8.39	0.0			
11/17/2011	14:27:30	-8	0.0	8.39	0.0			
11/17/2011	14:29:10	30	1.4	8.38	1.1			
11/17/2011	14:30:50	5	0.0	8.37	2.3			
11/17/2011	14:32:30	2418	0.0	8.37	2.3			
11/17/2011	14:34:10	4070	0.0	8.37	2.3			

Well EF01A-34 EF01A-34			Field North Parrachute		Job Start Nov/17/2011	Customer Encana	Job Number BUNM-00473
Date	Time 24-hr clock	Treating Pressure PSI	Flow Rate B/M	Density LB/G	Volume BBL	Message	
11/17/2011	14:37:30	122	4.1	8.37	8.2		
11/17/2011	14:39:10	118	4.1	8.36	14.9		
11/17/2011	14:40:50	132	4.0	8.35	21.7		
11/17/2011	14:41:24					End Spacer	
11/17/2011	14:41:24	163	4.1	12.39	24.0		
11/17/2011	14:41:30					Start Cement Slurry	
11/17/2011	14:41:30	167	4.1	12.37	24.4		
11/17/2011	14:41:36					Start Mixing Scav Slurry	
11/17/2011	14:41:36	167	4.1	12.35	24.9		
11/17/2011	14:41:57					Reset Total, Vol = 26.54 bbl	
11/17/2011	14:41:57	268	5.0	12.24	26.5		
11/17/2011	14:42:30	174	5.0	12.29	29.3		
11/17/2011	14:42:37					End Scavenger Slurry	
11/17/2011	14:42:37					Start Mixing Lead Slurry	
11/17/2011	14:42:37	245	6.2	12.33	29.9		
11/17/2011	14:42:46					Pump 274sks(103 bbls) of 12.5 ppg Lead	
11/17/2011	14:42:46	237	6.6	12.37	30.9		
11/17/2011	14:42:47					Take Wet/Dry Samples	
11/17/2011	14:42:47	233	6.6	12.37	31.0		
11/17/2011	14:44:10	223	6.6	12.38	40.1		
11/17/2011	14:45:08					Good Returns	
11/17/2011	14:45:08	223	6.6	12.44	46.5		
11/17/2011	14:45:50	218	6.6	12.43	51.1		
11/17/2011	14:47:30	195	6.6	12.46	62.1		
11/17/2011	14:49:10	190	6.6	12.49	73.0		
11/17/2011	14:50:50	193	6.6	12.44	84.0		
11/17/2011	14:52:30	235	6.6	12.51	95.0		
11/17/2011	14:54:10	243	6.6	12.54	106.0		
11/17/2011	14:55:45					End Lead Slurry	
11/17/2011	14:55:45	116	5.2	12.44	116.2		
11/17/2011	14:55:50	119	5.2	12.44	116.6		
11/17/2011	14:56:49					Start Mixing Scav Slurry	
11/17/2011	14:56:49	146	5.2	13.15	121.7		
11/17/2011	14:56:53					Reset Total, Vol = 95.50 bbl	
11/17/2011	14:56:53	142	5.2	13.24	122.0		
11/17/2011	14:57:30	98	4.0	13.34	124.9		
11/17/2011	14:58:17					End Scavenger Slurry	
11/17/2011	14:58:17	75	3.6	13.98	128.0		
11/17/2011	14:58:18					Start Mixing Tail Slurry	
11/17/2011	14:58:18	82	3.6	13.98	128.1		
11/17/2011	14:58:22					Pump 160sks(44 bbls) of 14.0 Tail	
11/17/2011	14:58:22					Take Wet/Dry Samples	
11/17/2011	14:58:22	75	3.5	13.81	128.3		
11/17/2011	14:58:25					Good Returns	
11/17/2011	14:58:25	73	3.5	13.73	128.5		
11/17/2011	14:59:10	81	3.6	13.86	131.1		
11/17/2011	15:00:50	90	3.6	14.02	137.1		
11/17/2011	15:02:30	167	5.2	13.97	145.6		
11/17/2011	15:04:10	167	5.2	13.96	154.2		
11/17/2011	15:05:50	168	5.1	13.95	162.6		
11/17/2011	15:07:30	174	5.1	13.86	171.1		
11/17/2011	15:07:42					End Tail Slurry	
11/17/2011	15:07:42					End Cement Slurry	
11/17/2011	15:07:42	170	5.2	13.86	172.1		

Well EF01A-34 EF01A-34			Field North Parrachute		Job Start Nov/17/2011	Customer Encana	Job Number BUNM-00473
Date	Time 24-hr clock	Treating Pressure PSI	Flow Rate B/M	Density LB/G	Volume BBL	Message	
11/17/2011	15:07:43	161	5.2	13.87	172.2		
11/17/2011	15:07:44					Start Displacement	
11/17/2011	15:07:44	49	4.7	13.86	172.3		
11/17/2011	15:07:46					Displace 138.5 bbls of Water	
11/17/2011	15:07:46	19	3.8	13.87	172.4		
11/17/2011	15:07:47					Good Returns	
11/17/2011	15:07:47					24 bbls of Cement to Surface	
11/17/2011	15:07:47	45	2.8	13.88	172.5		
11/17/2011	15:09:10	0	0.0	13.88	172.7		
11/17/2011	15:10:50	-5	0.0	13.89	172.7		
11/17/2011	15:12:30	55	4.0	8.91	177.0		
11/17/2011	15:14:10	81	5.1	8.54	184.3		
11/17/2011	15:15:50	122	6.5	8.42	193.5		
11/17/2011	15:16:50					Reset Total, Vol = 77.96 bbl	
11/17/2011	15:16:50	132	6.4	8.35	200.0		
11/17/2011	15:17:30	129	6.5	8.31	204.3		
11/17/2011	15:19:10	140	6.5	8.33	215.1		
11/17/2011	15:20:50	139	6.5	8.32	225.9		
11/17/2011	15:22:30	149	6.5	8.29	236.7		
11/17/2011	15:24:10	180	6.4	8.32	247.4		
11/17/2011	15:25:50	244	6.4	8.34	258.1		
11/17/2011	15:27:30	352	6.3	8.34	268.6		
11/17/2011	15:29:10	376	6.3	8.34	279.2		
11/17/2011	15:30:50	440	6.3	8.34	289.8		
11/17/2011	15:32:30	475	3.4	8.34	299.5		
11/17/2011	15:34:10	487	3.4	8.34	305.2		
11/17/2011	15:35:50	423	2.1	8.34	310.4		
11/17/2011	15:37:30	445	2.1	8.34	313.9		
11/17/2011	15:39:10	451	2.1	8.34	317.4		
11/17/2011	15:40:50	1396	0.0	8.34	320.2		
11/17/2011	15:40:58					Bump Top Plug	
11/17/2011	15:40:58					End Displacement	
11/17/2011	15:40:58	1393	0.0	8.34	320.2		
11/17/2011	15:41:18					Bump 800 psi over	
11/17/2011	15:41:18	1391	0.0	8.34	320.2		
11/17/2011	15:41:47					1 bbls back	
11/17/2011	15:41:47	1388	0.0	8.34	320.2		
11/17/2011	15:42:30	1383	0.0	8.35	320.2		
11/17/2011	15:44:10	1374	0.0	8.35	320.2		
11/17/2011	15:45:33					Fllloat held	
11/17/2011	15:45:33	-8	0.0	8.35	320.2		
11/17/2011	15:45:50	-9	0.0	8.35	320.2		
11/17/2011	15:47:30	-9	0.0	8.35	320.2		
11/17/2011	15:49:10	8	0.0	8.35	320.2		
11/17/2011	15:50:06					End Job	
11/17/2011	15:50:06	191	0.0	8.35	320.2		

Well EF01A-34 EF01A-34	Field North Parrachute	Job Start Nov/17/2011	Customer Encana	Job Number BUNM-00473
---------------------------	---------------------------	--------------------------	--------------------	--------------------------

Post Job Summary

Average Pump Rates, bbl/min					Volume of Fluid Injected, bbl			
Slurry 6.0	N2	Mud	Maximum Rate 8.0	Total Slurry 147.0	Mud	Spacer 20.0	N2	
Treating Pressure Summary, psi					Breakdown Fluid			
Maximum 2500	Final 1400	Average 300	Bump Plug to 1400	Breakdown	Type	Volume	Density 8.34 lb/gal	
Avg. N2 Percent	Designed Slurry Volume 147.0 bbl		Displacement 138.5 bbl	Mix Water Temp 80 degF	Cement Circulated to Surface? <input checked="" type="checkbox"/>	Volume 24.0 bbl		
					Washed Thru Perfs <input type="checkbox"/>	To		
Customer or Authorized Representative Floid Roberts			Schlumberger Supervisor Jeff Patterson			Circulation Lost <input type="checkbox"/>	Job Completed <input checked="" type="checkbox"/>	
						-	-	