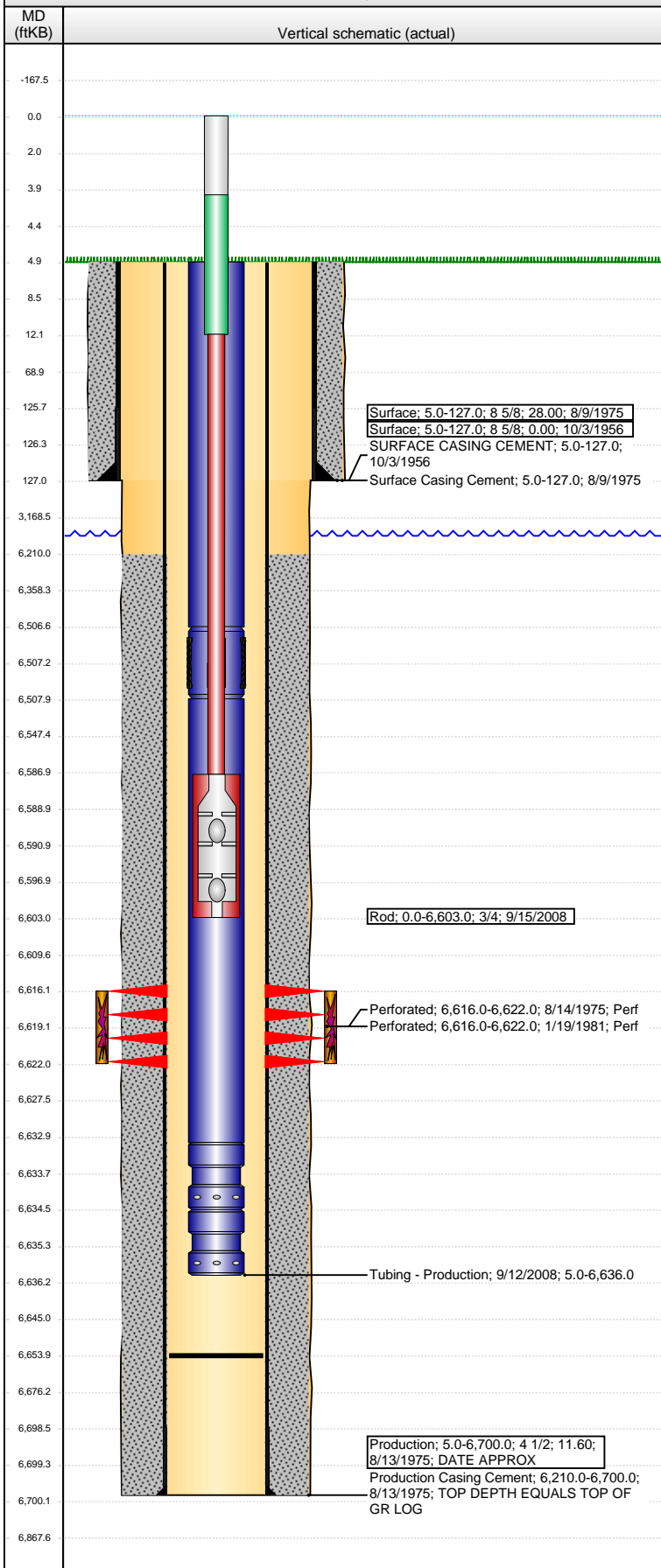


Well Name: D CASTOR 1

VERTICAL - ORIGINAL HOLE, 7/3/2013 8:57:52 AM



Well Header

API	Business Unit	District	Well Config
05-123-05528	WATTENBERG	25	VERTICAL
Original KB Elevation (ft)	KB - GL / MSL (ftKB)	Spud Date	P & A Date
4,814.00	5.00	8/9/1975	

Comment
 IHS 297 WELL IMPORT. VERY LITTLE INFO ON ORIG DRILL IN 1956 & RE-ENTRY IN 1975

Directions To Well

Congressional Location

Quarter 1	Quarter 2	Quarter 3	Quarter 4	Section	Township	Twnshp N...	Range	Rng E/W Dir
		NE	NW	21	8 N		59	W

Bottom Hole Location

North-South Distance (ft)	From N or S Line	East-West Distance (ft)	From E or W Line

Plug Back Total Depths

Date	Depth (ftKB)	Method	Com
8/15/1975	6,654.0	TAG	PBTD

Wellbore Sections

Section Des	Size (in)	Act Top (ftKB)	Act Btm (ftKB)
SURFACE	10 3/4	5.0	127.0
PRODUCTION	7 7/8	127.0	6,700.0

Zone Statuses

Zone Name	Status Date	Status	Job
D SAND	4/16/1980	PR	COMPLETION - RE-ENTRY, 8/9/1975 00:00
D SAND	7/3/1981	PR	RE-FRAC, 1/19/1981 00:00

Casing Strings

Casing Description	Run Date	OD (in)	Wt/Len (l...)	Grade	Top (ftKB)	MD (ftKB)
Surface	8/9/1975	8 5/8	28.00		5.0	127.0

Surface, 127.0ftKB

Casing Description	Run Date	OD (in)	Wt/Len (l...)	Grade	Top (ftKB)	MD (ftKB)
Surface	10/3/1956	8 5/8			5.0	127.0

Production, 6,700.0ftKB

Casing Description	Run Date	OD (in)	Wt/Len (l...)	Grade	Top (ftKB)	MD (ftKB)
Production	8/13/1975	4 1/2	11.60		5.0	6,700.0

Cement

Description	Top Depth (ftKB)	Bottom Depth (ftKB)
SURFACE CASING CEMENT	5.0	127.0
Description	Top Depth (ftKB)	Bottom Depth (ftKB)
Surface Casing Cement	5.0	127.0
Description	Top Depth (ftKB)	Bottom Depth (ftKB)
Production Casing Cement	6,210.0	6,700.0

Tubing Components

Item Des	OD (in)	Wt (lb/ft)	Grade	Jts	Len (ft)	Btm (ftKB)	Btm (TVD) (ftKB)
Tubing	2 3/8	4.70		211	6,501.50	6,506.5	
Anchor/catcher	2 3/8			1	1.50	6,508.0	
Tubing	2 3/8			5	125.00	6,633.0	
SEATING NIPPLE	2 3/8			1	1.50	6,634.5	
PERFORATED NIPPLE	2 3/8			1	1.50	6,636.0	

Rods & Pumps

Rod Description	Run Date	Set Depth (ftKB)
Rod	9/15/2008	6,603.0

Comment

Item Description	OD Nominal (in)	Joints	Length (ft)
Polished Rod	1	1	4.00
Item Description	OD Nominal (in)	Joints	Length (ft)
Polished Rod	1	1	8.00
Item Description	OD Nominal (in)	Joints	Length (ft)
Sucker Rod	3/4	263	6,575.00
Item Description	OD Nominal (in)	Joints	Length (ft)
Rod Pump	2	1	16.00

Perforation Data

Zone	Bnch/St g	Entered Shot Total	Top (ftKB)	Btm (ftKB)	Date
D SAND, ORIGINAL HOLE			6,616.00	6,622.00	8/14/1975
D SAND, ORIGINAL HOLE		14	6,616.00	6,622.00	1/19/1981

Well Name: D CASTOR 1

VERTICAL - ORIGINAL HOLE, 7/3/2013 8:57:53 AM

Stimulations & Treatments

Date 6/24/1981	Zone D SAND, ORIGINAL HOLE	Primary Job Type RE-FRAC		
Technical Result	Tech Result Details	Tech Result Note		
Comment				
Date 6/27/1981	Zone D SAND, ORIGINAL HOLE	Primary Job Type RE-FRAC		
Technical Result	Tech Result Details	Tech Result Note		
Comment				
Date 7/3/2003	Zone D SAND, ORIGINAL HOLE	Primary Job Type SCALE REMOVAL		
Technical Result	Tech Result Details	Tech Result Note		
Comment				
Other In Hole				
Run Date	Des	OD (in)	Top (ftKB)	Btm (ftKB)
Logs				
Date	Type	Top (ftKB)	Btm (ftKB)	
6/9/1975	GAMMA RAY-NEUTRON	6,300.0	6,657.0	

