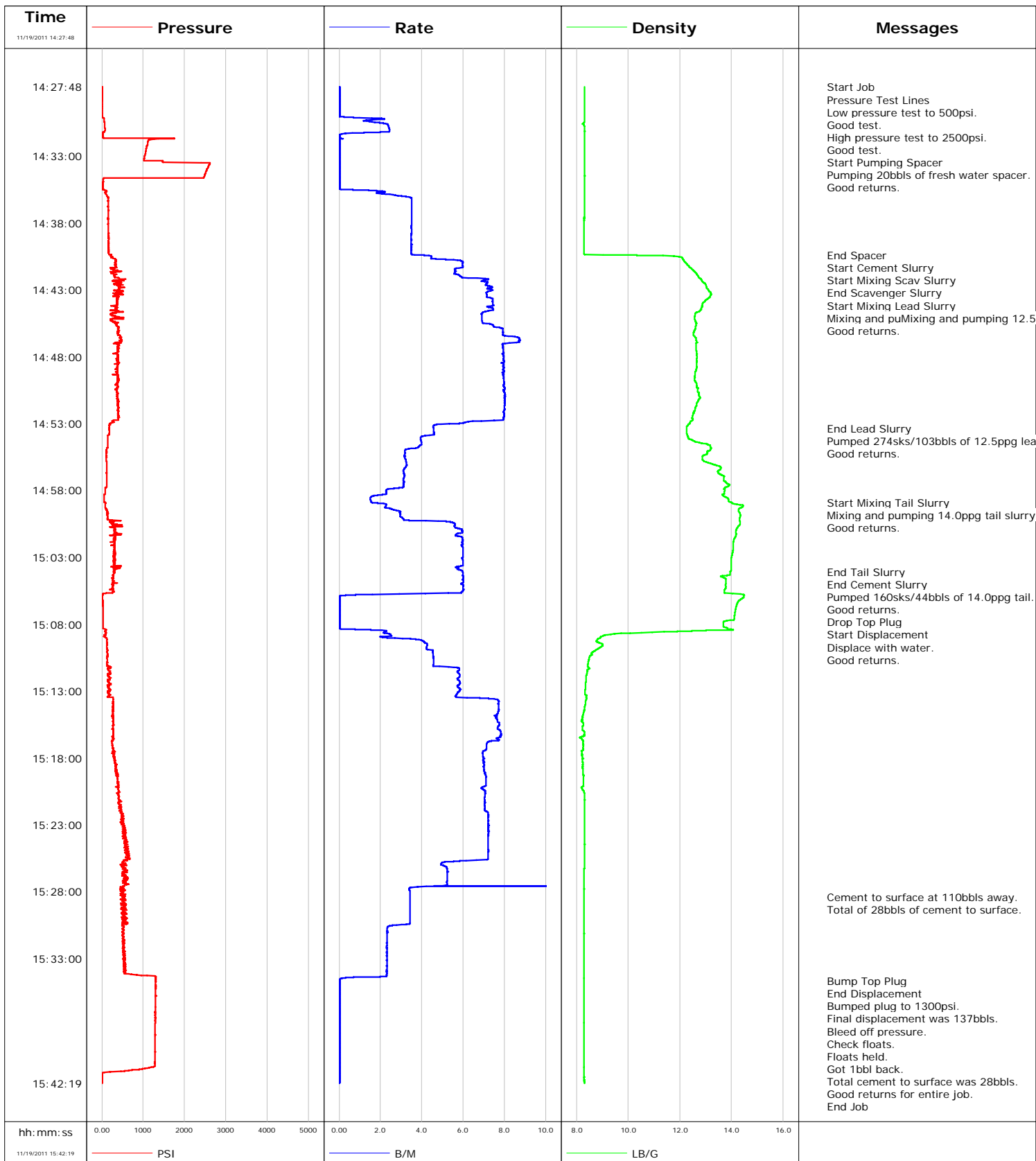


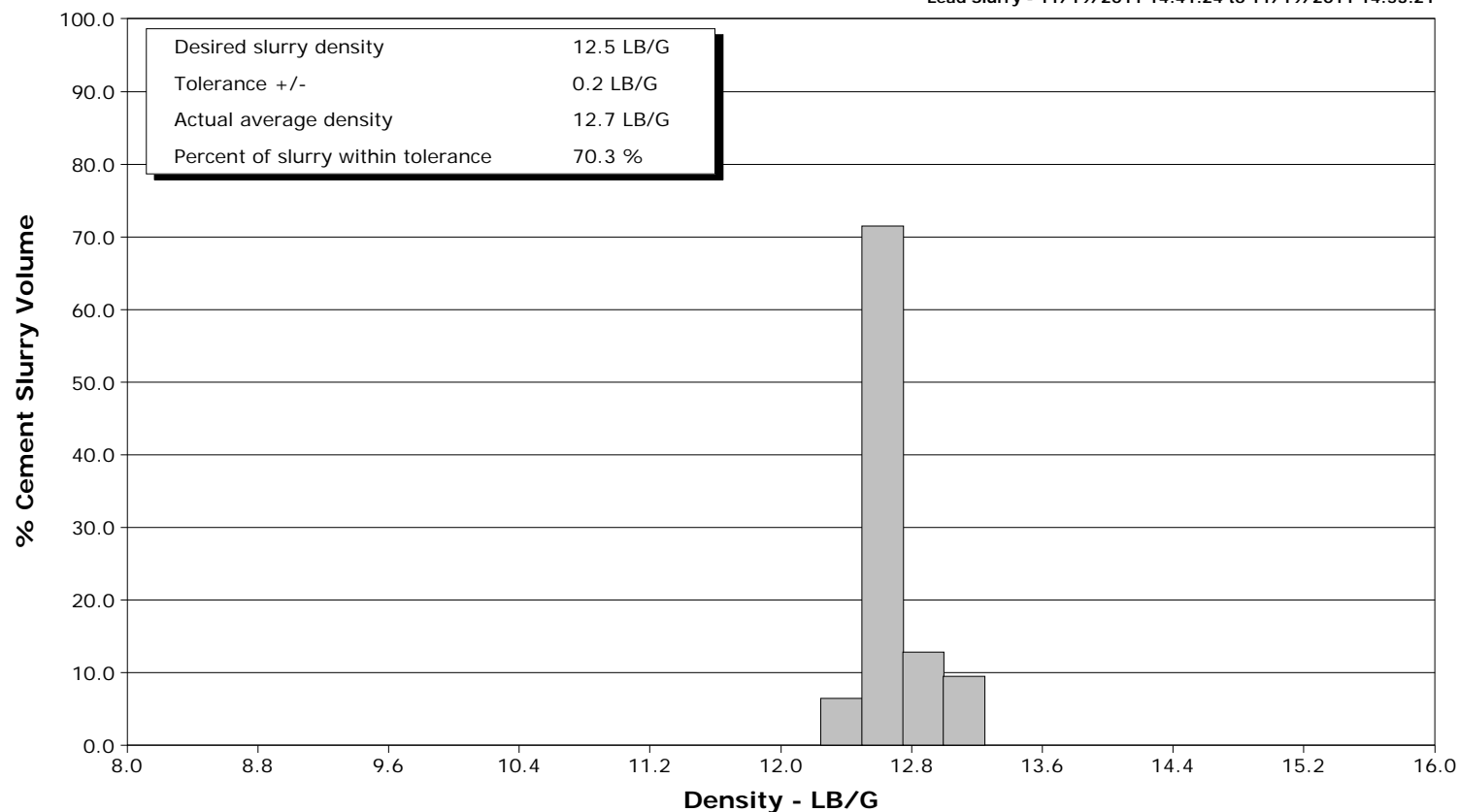
<b>Well</b>	EF01C-34	<b>Client</b>	ENCANA
<b>Field</b>	N. PARACHUTE	<b>SIR No.</b>	BUNM-00474
<b>Engineer</b>	Jeff Patterson	<b>Job Type</b>	9 5/8" SURFACE
<b>Country</b>	United States	<b>Job Date</b>	11-19-2011



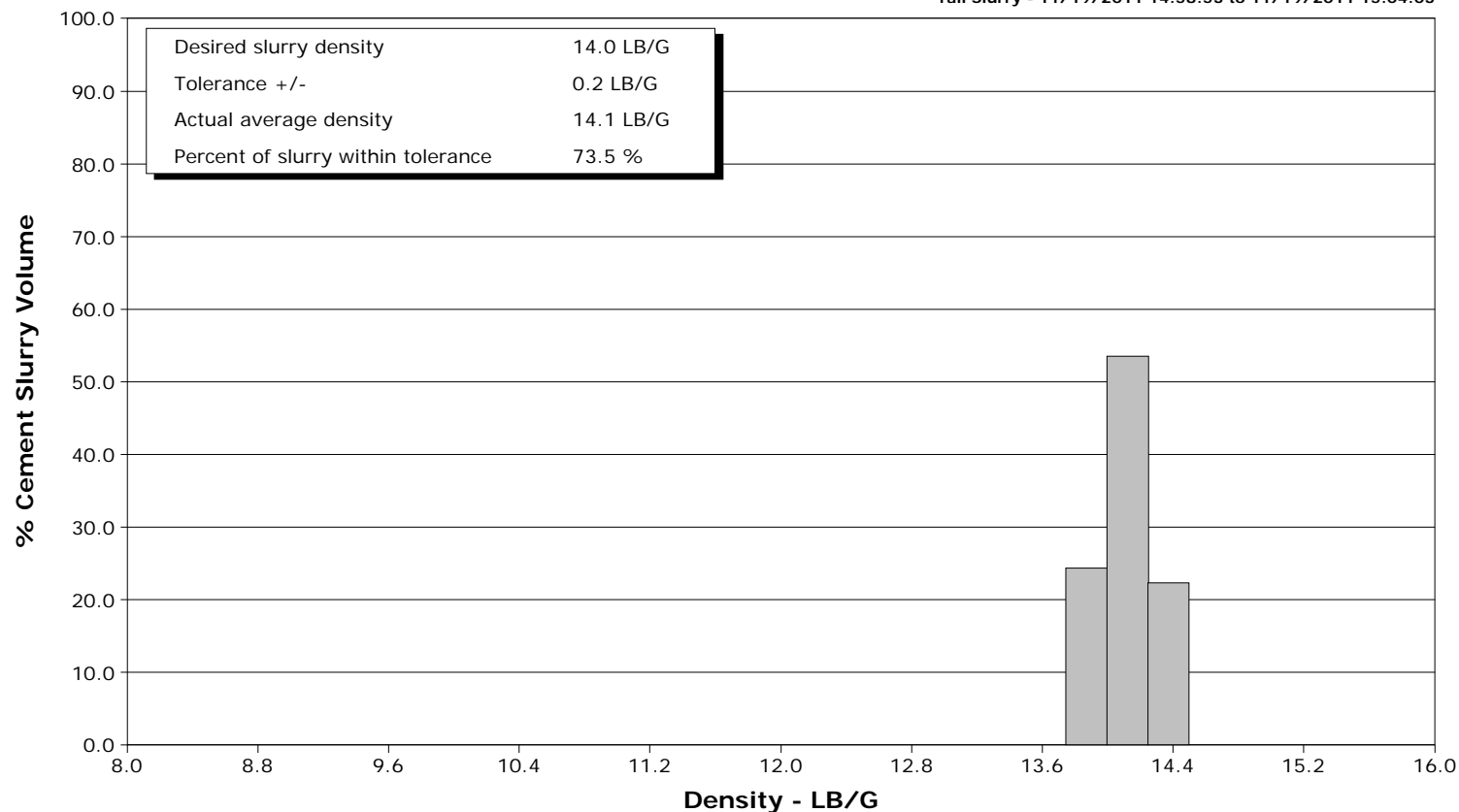
**Well** EF01C-34  
**Field** N. PARACHUTE  
**Engineer** Jeff Patterson  
**Country** United States

**Client** ENCANA  
**SIR No.** BUNM-00474  
**Job Type** 9 5/8" SURFACE  
**Job Date** 11-19-2011

Lead Slurry - 11/19/2011 14:41:24 to 11/19/2011 14:53:21



Tail Slurry - 11/19/2011 14:58:53 to 11/19/2011 15:04:03



Page 1 of 4

Well EF01C-34 EF01C-34			Field N. PARACHUTE	Job Start Nov/19/2011	Customer ENCANA	Job Number BUNM-00474
Date	Time 24-hr clock	Treating Pressure PSI	Flow Rate B/M	Density LB/G	Volume BBL	Message
11/19/2011	14:39:32	171	3.5	8.30	15.8	
11/19/2011	14:40:24					End Spacer
11/19/2011	14:40:24	211	4.1	10.33	18.8	
11/19/2011	14:40:25					Start Cement Slurry
11/19/2011	14:40:25	211	4.1	10.33	18.9	
11/19/2011	14:40:26					Start Mixing Scav Slurry
11/19/2011	14:40:26	205	4.4	11.35	19.0	
11/19/2011	14:41:12	351	6.0	12.34	23.1	
11/19/2011	14:41:23					End Scavenger Slurry
11/19/2011	14:41:23	305	5.7	12.45	24.2	
11/19/2011	14:41:24					Start Mixing Lead Slurry
11/19/2011	14:41:24	305	5.7	12.45	24.3	
11/19/2011	14:41:25					Mixing and puMixing and pumping 12.5ppg lead
11/19/2011	14:41:25					Good returns.
11/19/2011	14:41:25	251	5.6	12.46	24.4	
11/19/2011	14:42:52	419	7.2	13.05	33.7	
11/19/2011	14:44:32	215	7.3	12.79	45.9	
11/19/2011	14:46:12	392	7.9	12.53	58.0	
11/19/2011	14:47:52	393	7.9	12.65	71.6	
11/19/2011	14:49:32	392	8.0	12.58	84.8	
11/19/2011	14:51:12	395	8.0	12.72	98.1	
11/19/2011	14:52:52	273	6.2	12.40	111.3	
11/19/2011	14:53:21					End Lead Slurry
11/19/2011	14:53:21	177	4.6	12.27	113.7	
11/19/2011	14:53:51					Pumped 274sks/103bbls of 12.5ppg lead.
11/19/2011	14:53:51					Good returns.
11/19/2011	14:53:51	174	4.6	12.28	116.0	
11/19/2011	14:54:32	148	4.0	13.03	118.7	
11/19/2011	14:56:12	116	3.2	13.54	124.3	
11/19/2011	14:57:52	84	2.5	13.70	129.5	
11/19/2011	14:58:53					Start Mixing Tail Slurry
11/19/2011	14:58:53	63	1.6	13.96	131.4	
11/19/2011	14:58:55					Mixing and pumping 14.0ppg tail slurry.
11/19/2011	14:58:55					Good returns.
11/19/2011	14:58:55	77	1.6	14.00	131.5	
11/19/2011	14:59:32	133	2.9	14.27	132.9	
11/19/2011	15:01:12	294	5.9	14.17	140.4	
11/19/2011	15:02:52	323	6.0	14.01	150.3	
11/19/2011	15:04:03					End Tail Slurry
11/19/2011	15:04:03	290	6.0	13.96	157.3	
11/19/2011	15:04:05					End Cement Slurry
11/19/2011	15:04:05					Pumped 160sks/44bbls of 14.0ppg tail.
11/19/2011	15:04:05	299	6.0	13.95	157.5	
11/19/2011	15:04:06					Good returns.
11/19/2011	15:04:06	299	6.0	13.95	157.6	
11/19/2011	15:04:13					Drop Top Plug
11/19/2011	15:04:13	291	6.0	13.95	158.3	
11/19/2011	15:04:14					Start Displacement
11/19/2011	15:04:14	291	6.0	13.95	158.4	
11/19/2011	15:04:15					Displace with water.
11/19/2011	15:04:15					Good returns.
11/19/2011	15:04:15	289	6.0	13.95	158.5	
11/19/2011	15:04:32	250	6.0	13.70	160.2	
11/19/2011	15:06:12	12	0.0	14.31	167.4	

Well			Field		Job Start	Customer		Job Number
EF01C-34 EF01C-34			N. PARACHUTE		Nov/19/2011	ENCANA		BUNM-00474
Date	Time 24-hr clock	Treating Pressure PSI	Flow Rate B/M	Density LB/G	Volume BBL	Message		
11/19/2011	15:09:32	123	4.3	9.03	170.8			
11/19/2011	15:11:12	219	5.3	8.43	178.3			
11/19/2011	15:12:52	209	5.9	8.35	188.0			
11/19/2011	15:14:32	276	7.7	8.30	199.5			
11/19/2011	15:16:12	280	7.8	8.31	212.3			
11/19/2011	15:17:52	268	7.0	8.23	224.4			
11/19/2011	15:19:32	381	7.1	8.28	236.1			
11/19/2011	15:21:12	443	7.0	8.31	247.9			
11/19/2011	15:22:52	517	7.2	8.31	259.8			
11/19/2011	15:24:32	570	7.2	8.31	271.8			
11/19/2011	15:26:12	507	5.2	8.31	282.7			
11/19/2011	15:27:52	546	3.4	8.30	295.7			
11/19/2011	15:28:23					Cement to surface at 110bbls away.		
11/19/2011	15:28:23					Total of 28bbls of cement to surface.		
11/19/2011	15:28:23	492	3.4	8.30	297.4			
11/19/2011	15:29:32	572	3.4	8.30	301.4			
11/19/2011	15:31:12	524	2.3	8.30	306.3			
11/19/2011	15:32:52	520	2.3	8.29	310.2			
11/19/2011	15:34:32	1308	0.0	8.30	313.7			
11/19/2011	15:34:39					Bump Top Plug		
11/19/2011	15:34:39					End Displacement		
11/19/2011	15:34:39	1302	0.0	8.30	313.7			
11/19/2011	15:34:41					Bumped plug to 1300psi.		
11/19/2011	15:34:41					Final displacement was 137bbls.		
11/19/2011	15:34:41					Bleed off pressure.		
11/19/2011	15:34:41	1303	0.0	8.29	313.7			
11/19/2011	15:34:42					Check floats.		
11/19/2011	15:34:42					Floats held.		
11/19/2011	15:34:42	1304	0.0	8.29	313.7			
11/19/2011	15:34:43					Got 1bbl back.		
11/19/2011	15:34:43					Total cement to surface was 28bbls.		
11/19/2011	15:34:43					Good returns for entire job.		
11/19/2011	15:34:43	1304	0.0	8.29	313.7			
11/19/2011	15:36:12	1301	0.0	8.30	313.7			
11/19/2011	15:37:52	1290	0.0	8.30	313.7			
11/19/2011	15:39:32	1284	0.0	8.30	313.7			
11/19/2011	15:41:12	1097	0.0	8.30	313.7			
11/19/2011	15:42:07					End Job		
11/19/2011	15:42:07	2	0.0	8.30	313.7			

Well EF01C-34 EF01C-34	Field N. PARACHUTE	Job Start Nov/19/2011	Customer ENCANA	Job Number BUNM-00474
---------------------------	-----------------------	--------------------------	--------------------	--------------------------

Post Job Summary

Average Pump Rates, bbl/min					Volume of Fluid Injected, bbl			
Slurry 6.0	N2	Mud	Maximum Rate 8.0	Total Slurry 147.0	Mud	Spacer 20.0	N2	
Treating Pressure Summary, psi					Breakdown Fluid			
Maximum 2500	Final 1300	Average 300	Bump Plug to 1300	Breakdown	Type	Volume	Density	
Avg. N2 Percent	Designed Slurry Volume 147.0 bbl		Displacement 138.0 bbl		Mix Water Temp 75 degF	Cement Circulated to Surface? <input checked="" type="checkbox"/>	Volume 28.0 bbl	
Customer or Authorized Representative FLOYD ROBERTS			Schlumberger Supervisor Jeff Patterson			Washed Thru Perfs <input type="checkbox"/>	To	
						Circulation Lost <input type="checkbox"/>	Job Completed <input checked="" type="checkbox"/>	
						-	-	