

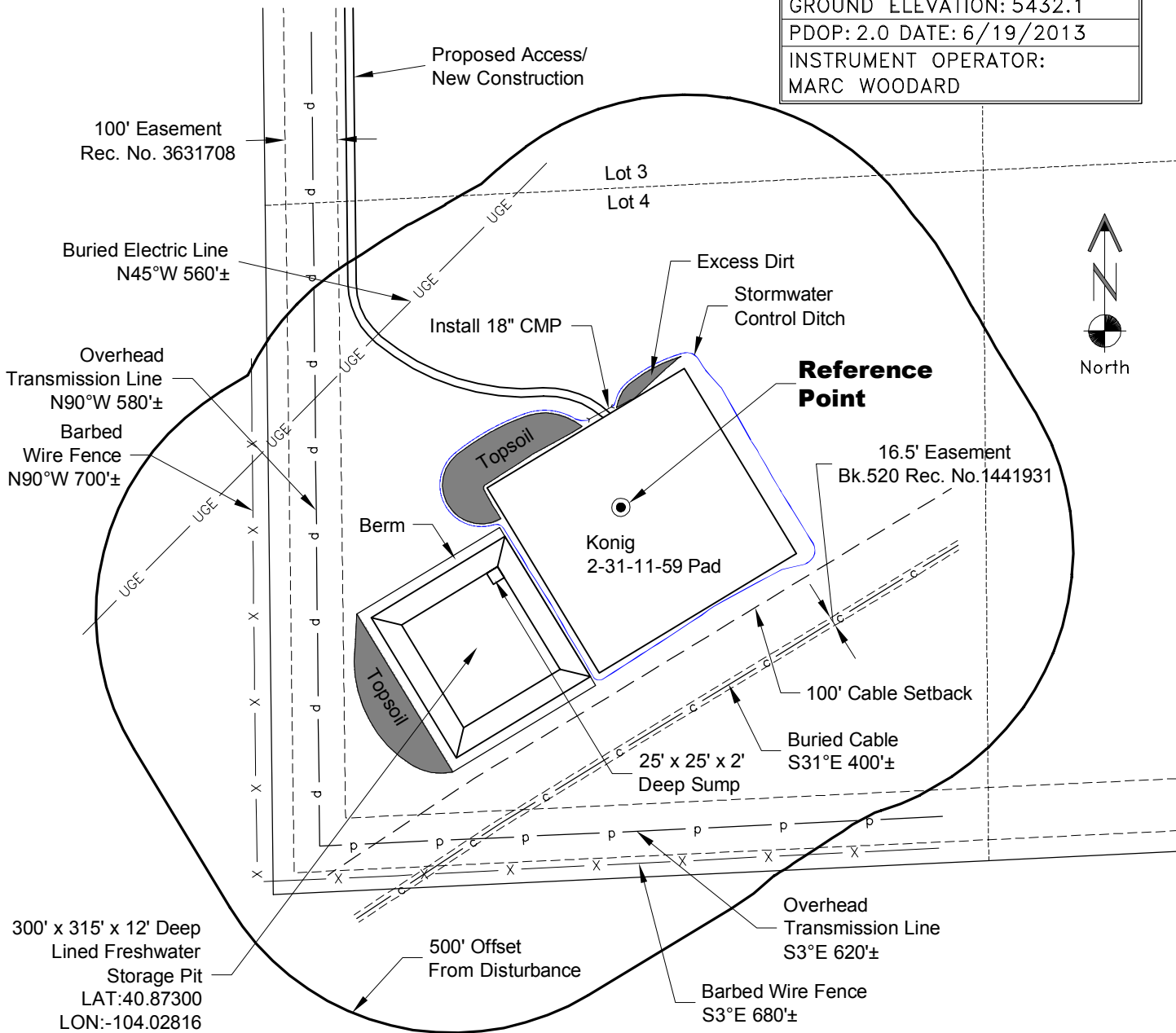
LOCATION DRAWING

VEGETATION:
GRASSLAND PASTURE

SURFACE USE:
GRAZING

REFERENCE POINT

LATITUDE: 40.87372
LONGITUDE: -104.02717
FOOTAGE: 710 FSL 675 FWL
GROUND ELEVATION: 5432.1
PDOP: 2.0 DATE: 6/19/2013
INSTRUMENT OPERATOR: MARC WOODARD

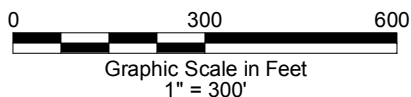


NOTE-DISTANCE TO NEAREST:
Property Line - W 675'
Public Road - WCR 124 - N 4570'±
Building - Church N23°E 4790'±
Railroad - S45°W 42 Miles
Powerline - W 580'±

DISTURBANCE ACREAGE:
5.9± DRILLING OPERATIONS

NOTE:
ALL PRODUCTION FACILITIES WILL BE ON PAD.

7/1/13



LAND SURVEYING AND MAPPING
LAFAYETTE - WINTER PARK
Ph 303 666 0379 Fx 303 665 6320

CARRIZO NIOBRARA LLC
KONIG 2-31-11-59 PAD

LOT 4 SECTION 31 T11N R59W
6th PM WELD COUNTY COLORADO