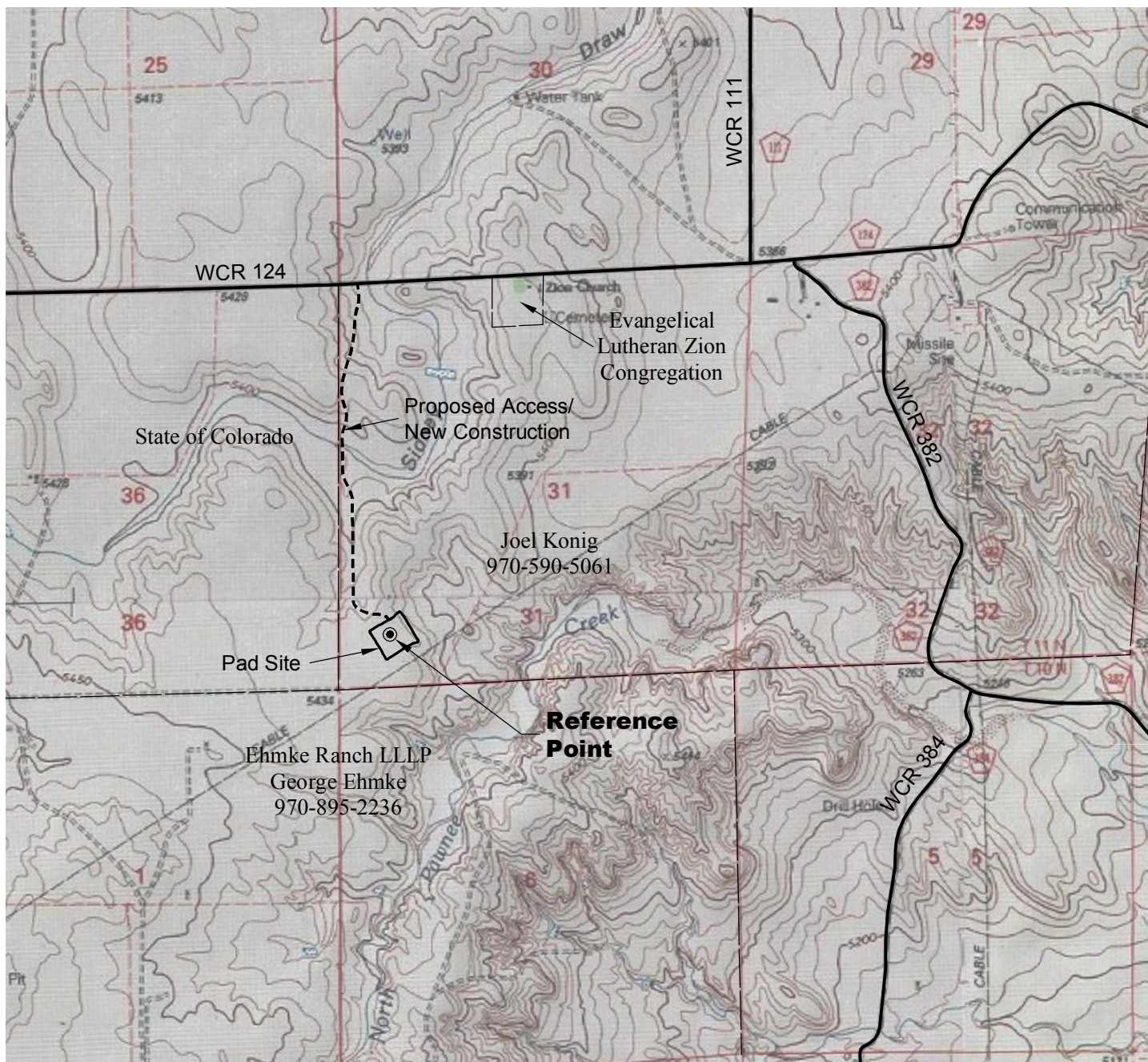


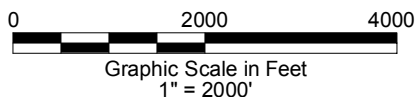
# ACCESS ROAD MAP



## DRIVING DIRECTIONS:

From Town of Keota, beginning at intersection of WCR 390 & WCR 103; North on WCR 390  
 MP 0.9 Right on WCR 103; North on WCR 103  
 MP 6.8 Right on WCR 112; East on WCR 112  
 MP 8.8 Left on WCR 107; North on WCR 107  
 MP 14.7 Right on WCR 124; East on WCR 124  
 MP 15.8 Right on access to pad  
 MP 16.7 Konig 2-31-11-59 Pad

7/1/13



LAND SURVEYING AND MAPPING  
 LAFAYETTE - WINTER PARK  
 Ph 303 666 0379 Fx 303 665 6320

**CARRIZO NIOBRARA LLC**  
**KONIG 2-31-11-59 PAD**

**LOT 4 SECTION 31 T11N R59W**  
**6th PM WELD COUNTY COLORADO**