

# KERR-MCGEE OIL & GAS ONSHORE LP

Location: COLORADO Slot: SLOT#07 ZIEMER 35N-E5HZ (223FNL & 351FWL, SEC.05)  
 Field: WELD COUNTY (KERR MCGEE) Well: ZIEMER 35N-E5HZ  
 Facility: SEC.05-T1N-R65W Wellbore: ZIEMER 35N-E5HZ PWB

Plot reference wellpath is ZIEMER 35N-E5HZ (PERMIT REV-1) PWP

True vertical depths are referenced to Rig on SLOT#07 ZIEMER 35N-E5HZ (223FNL & 351FWL, SEC.05) (RKB)	Grid System: NAD83 / Lambert Colorado SP, Northern Zone (501), US feet
Measured depths are referenced to Rig on SLOT#07 ZIEMER 35N-E5HZ (223FNL & 351FWL, SEC.05) (RKB)	North Reference: True north
Rig on SLOT#07 ZIEMER 35N-E5HZ (223FNL & 351FWL, SEC.05) to Mean Sea Level: 4974 feet	Scale: True distance
Mean Sea Level to Mud line (At Slot: SLOT#07 ZIEMER 35N-E5HZ (223FNL & 351FWL, SEC.05)): 0 feet	Depths are in feet
Coordinates are in feet referenced to Slot	Created by: wlsje02 on 6/18/2013

## Location Information

Facility Name		Grid East (US ft)	Grid North (US ft)	Latitude	Longitude	
SEC.05-T1N-R65W		322776.210	1273237.510	40°04'50.063"N	104°41'15.984"W	
Slot	Local N (ft)	Local E (ft)	Grid East (US ft)	Grid North (US ft)	Latitude	Longitude
SLOT#07 ZIEMER 35N-E5HZ (223FNL & 351FWL, SEC.05)	2334.69	-2258.83	3224996.184	1275551.316	40°05'13.124"N	104°41'45.046"W
Rig on SLOT#07 ZIEMER 35N-E5HZ (223FNL & 351FWL, SEC.05) (RKB) to Mud line (At Slot: SLOT#07 ZIEMER 35N-E5HZ (223FNL & 351FWL, SEC.05))						497 ft
Mean Sea Level to Mud line (At Slot: SLOT#07 ZIEMER 35N-E5HZ (223FNL & 351FWL, SEC.05))						0 ft
Rig on SLOT#07 ZIEMER 35N-E5HZ (223FNL & 351FWL, SEC.05) (RKB) to Mean Sea Level						497 ft

## Survey Program

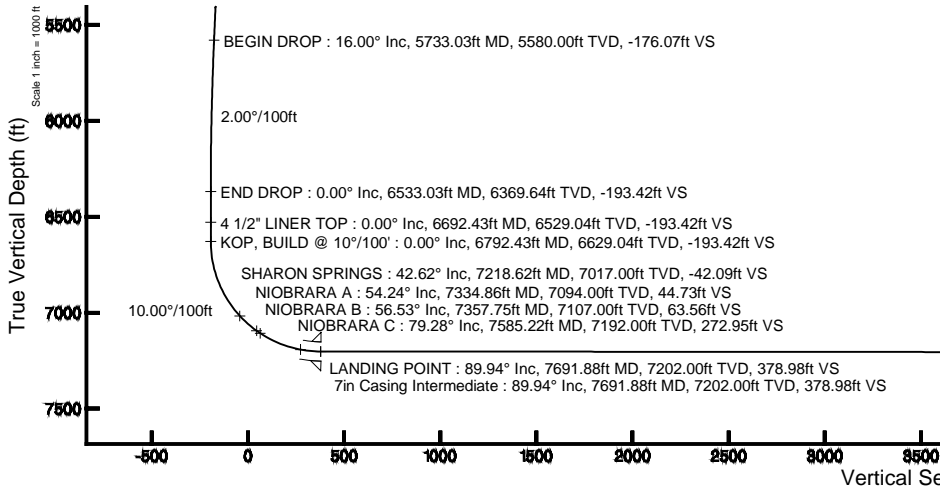
Start MD (ft)	End MD (ft)	Tool	Model	Log Name/Comment	Wellbore
17.00	7691.88	Navitrak	Navitrak (Standard)		ZIEMER 35N-E5HZ PWB
7691.88	11819.38	OnTrak	OnTrak (Standard)		ZIEMER 35N-E5HZ PWB

## Well Profile Data

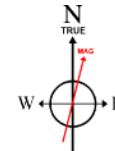
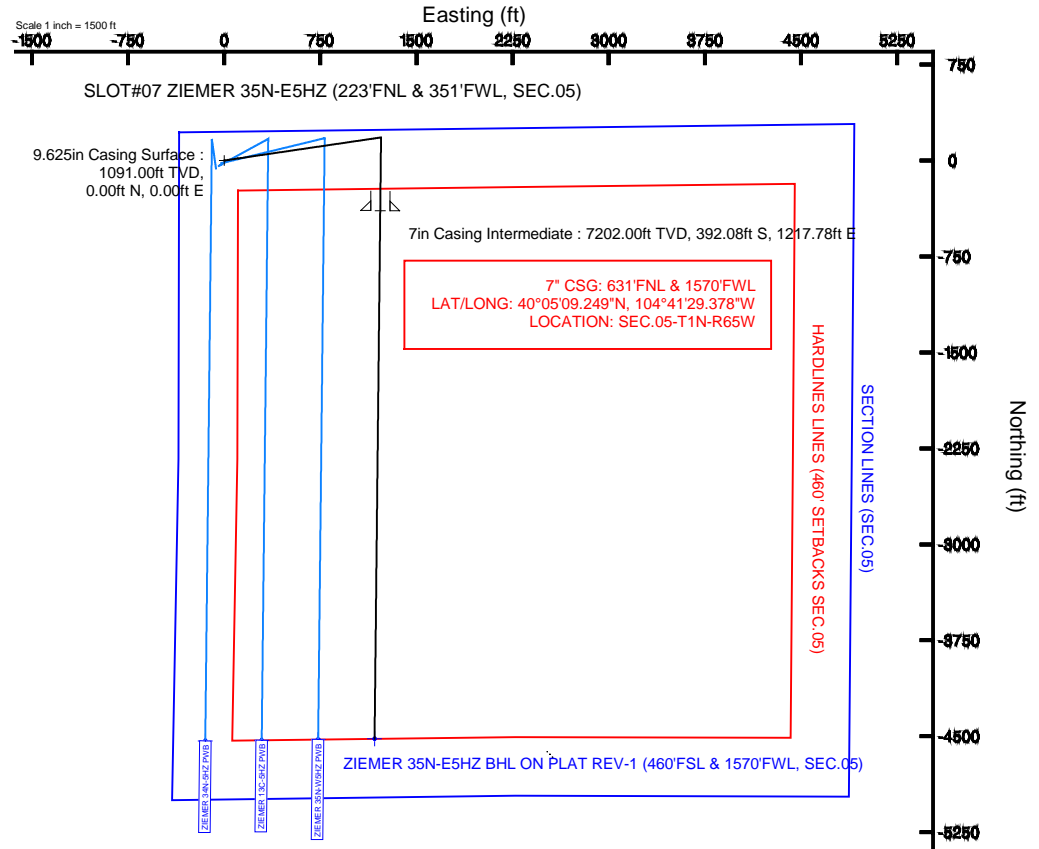
Design Comment	MD (ft)	Inc (°)	Az (°)	TVD (ft)	Local N (ft)	Local E (ft)	DLS (°/100ft)	VS (ft)
TIE-ON	17.00	0.000	81.620	17.00	0.00	0.00	0.00	0.00
BEGIN NUDGE	1250.00	0.000	81.620	1250.00	0.00	0.00	0.00	0.00
END NUDGE	2050.00	16.000	81.620	2039.64	16.17	109.79	2.00	-17.35
BEGIN DROP	5733.03	16.000	81.620	5580.00	164.12	1114.13	0.00	-176.07
END DROP	6533.03	0.000	180.615	6369.64	180.30	1223.93	2.00	-193.42
KOP, BUILD @ 10°/100'	6792.43	0.000	180.615	6629.04	180.30	1223.93	0.00	-193.42
LANDING POINT	7691.88	89.944	180.615	7202.00	-392.07	1217.78	10.00	378.98
TOTAL DEPTH	11819.38	89.944	180.615	7206.00	-4519.34	1173.48	0.00	4506.48

## Targets

Name	MD (ft)	TVD (ft)	Local N (ft)	Local E (ft)	Grid East (US ft)	Grid North (US ft)	Latitude	Longitude
BOYD PAD HARDLINES LINES (460' SETBACKS SEC.05)		4974.00	-4619.80	2521.30	3227559.17	1270954.76	40°04'27.469"N	104°41'12.613"W
BOYD PAD SECTION LINES (SEC.05)		4974.00	-4619.80	2521.30	3227559.17	1270954.76	40°04'27.469"N	104°41'12.613"W
ZIEMER 35N-E5HZ BHL ON PLAT REV-1 (460'FSL & 1570'FWL, SEC.05)	11819.38	7206.00	-4519.34	1173.48	3226210.55	1271042.99	40°04'28.463"N	104°41'29.951"W



Azimuth 180.62° with reference 0.00 N, 0.00 E



BGGM (1945.0 to 2014.0) Dip: 66.71° Field: 52659 nT  
 Magnetic North is 8.59 degrees East of True North (at 6/18/2013)

To correct azimuth from Magnetic to True add 8.59 degrees



# Planned Wellpath Report

## ZIEMER 35N-E5HZ (PERMIT REV-1) PWP

Page 1 of 6



REFERENCE WELLPATH IDENTIFICATION			
Operator	<b>KERR-MCGEE OIL &amp; GAS ONSHORE LP</b>	Slot	<b>SLOT#07 ZIEMER 35N-E5HZ (223'FNL &amp; 351'FWL, SEC.05)</b>
Area	<b>COLORADO</b>	Well	<b>ZIEMER 35N-E5HZ</b>
Field	<b>WELD COUNTY (KERR MCGEE)</b>	Wellbore	<b>ZIEMER 35N-E5HZ PWB</b>
Facility	<b>SEC.05-T1N-R65W</b>		

REPORT SETUP INFORMATION			
Projection System	<b>NAD83 / Lambert Colorado SP, Northern Zone (501), US feet</b>	Software System	<b>WellArchitect® 4.0.0</b>
North Reference	<b>True</b>	User	<b>Wilsjef02</b>
Scale	<b>0.999961</b>	Report Generated	<b>6/19/2013 at 09:45:02</b>
Convergence at slot	<b>n/a</b>	Database/Source file	<b>WellArchitectDB/ZIEMER_35N-E5HZ_PWB.xml</b>

WELLPATH LOCATION						
	Local coordinates		Grid coordinates		Geographic coordinates	
	North[ft]	East[ft]	Easting[US ft]	Northing[US ft]	Latitude	Longitude
Slot Location	2334.69	-2258.83	3224996.18	1275551.32	<b>40°05'13.124"N</b>	<b>104°41'45.046"W</b>
Facility Reference Pt			<b>3227276.21</b>	<b>1273237.51</b>	40°04'50.053"N	104°41'15.984"W
Field Reference Pt			<b>3197771.84</b>	<b>1268891.29</b>	40°04'09.600"N	104°47'36.000"W

WELLPATH DATUM			
Calculation method	<b>Minimum curvature</b>	Rig on SLOT#07 ZIEMER 35N-E5HZ (223'FNL & 351'FWL, SEC.05) (RKB) to Facility Vertical Datum	<b>4974.00ft</b>
Horizontal Reference Pt	<b>Slot</b>	Rig on SLOT#07 ZIEMER 35N-E5HZ (223'FNL & 351'FWL, SEC.05) (RKB) to Mean Sea Level	<b>4974.00ft</b>
Vertical Reference Pt	<b>Rig on SLOT#07 ZIEMER 35N-E5HZ (223'FNL &amp; 351'FWL, SEC.05) (RKB)</b>	Rig on SLOT#07 ZIEMER 35N-E5HZ (223'FNL & 351'FWL, SEC.05) (RKB) to Mud Line at Slot (SLOT#07 ZIEMER 35N-E5HZ (223'FNL & 351'FWL, SEC.05))	<b>4974.00ft</b>
MD Reference Pt	<b>Rig on SLOT#07 ZIEMER 35N-E5HZ (223'FNL &amp; 351'FWL, SEC.05) (RKB)</b>	Section Origin	<b>N 0.00, E 0.00 ft</b>
Field Vertical Reference	<b>Mean Sea Level</b>	Section Azimuth	<b>180.62°</b>



# Planned Wellpath Report

## ZIEMER 35N-E5HZ (PERMIT REV-1) PWP

Page 2 of 6



REFERENCE WELLPATH IDENTIFICATION			
Operator	KERR-MCGEE OIL & GAS ONSHORE LP	Slot	SLOT#07 ZIEMER 35N-E5HZ (223'FNL & 351'FWL, SEC.05)
Area	COLORADO	Well	ZIEMER 35N-E5HZ
Field	WELD COUNTY (KERR MCGEE)	Wellbore	ZIEMER 35N-E5HZ PWB
Facility	SEC.05-T1N-R65W		

WELLPATH DATA (135 stations) † = interpolated/extrapolated station										
MD [ft]	Inclination [°]	Azimuth [°]	TVD [ft]	Vert Sect [ft]	North [ft]	East [ft]	Latitude	Longitude	DLS [°/100ft]	Comments
0.00†	0.000	81.620	0.00	0.00	0.00	0.00	40°05'13.124"N	104°41'45.046"W	0.00	
17.00	0.000	81.620	17.00	0.00	0.00	0.00	40°05'13.124"N	104°41'45.046"W	0.00	TIE-ON
117.00†	0.000	81.620	117.00	0.00	0.00	0.00	40°05'13.124"N	104°41'45.046"W	0.00	
217.00†	0.000	81.620	217.00	0.00	0.00	0.00	40°05'13.124"N	104°41'45.046"W	0.00	
317.00†	0.000	81.620	317.00	0.00	0.00	0.00	40°05'13.124"N	104°41'45.046"W	0.00	
417.00†	0.000	81.620	417.00	0.00	0.00	0.00	40°05'13.124"N	104°41'45.046"W	0.00	
517.00†	0.000	81.620	517.00	0.00	0.00	0.00	40°05'13.124"N	104°41'45.046"W	0.00	
617.00†	0.000	81.620	617.00	0.00	0.00	0.00	40°05'13.124"N	104°41'45.046"W	0.00	
717.00†	0.000	81.620	717.00	0.00	0.00	0.00	40°05'13.124"N	104°41'45.046"W	0.00	
817.00†	0.000	81.620	817.00	0.00	0.00	0.00	40°05'13.124"N	104°41'45.046"W	0.00	
917.00†	0.000	81.620	917.00	0.00	0.00	0.00	40°05'13.124"N	104°41'45.046"W	0.00	
1017.00†	0.000	81.620	1017.00	0.00	0.00	0.00	40°05'13.124"N	104°41'45.046"W	0.00	
1041.00†	0.000	81.620	1041.00	0.00	0.00	0.00	40°05'13.124"N	104°41'45.046"W	0.00	FOX HILLS BASE
1117.00†	0.000	81.620	1117.00	0.00	0.00	0.00	40°05'13.124"N	104°41'45.046"W	0.00	
1217.00†	0.000	81.620	1217.00	0.00	0.00	0.00	40°05'13.124"N	104°41'45.046"W	0.00	
1250.00	0.000	81.620	1250.00	0.00	0.00	0.00	40°05'13.124"N	104°41'45.046"W	0.00	BEGIN NUDGE
1317.00†	1.340	81.620	1316.99	-0.12	0.11	0.78	40°05'13.125"N	104°41'45.036"W	2.00	
1417.00†	3.340	81.620	1416.91	-0.76	0.71	4.81	40°05'13.131"N	104°41'44.984"W	2.00	
1517.00†	5.340	81.620	1516.61	-1.94	1.81	12.30	40°05'13.142"N	104°41'44.888"W	2.00	
1617.00†	7.340	81.620	1616.00	-3.67	3.42	23.22	40°05'13.158"N	104°41'44.747"W	2.00	
1717.00†	9.340	81.620	1714.93	-5.94	5.54	37.57	40°05'13.179"N	104°41'44.563"W	2.00	
1817.00†	11.340	81.620	1813.31	-8.74	8.15	55.33	40°05'13.205"N	104°41'44.334"W	2.00	
1917.00†	13.340	81.620	1910.99	-12.09	11.27	76.47	40°05'13.235"N	104°41'44.062"W	2.00	
2017.00†	15.340	81.620	2007.87	-15.96	14.87	100.97	40°05'13.271"N	104°41'43.747"W	2.00	
2050.00	16.000	81.620	2039.64	-17.35	16.17	109.79	40°05'13.284"N	104°41'43.633"W	2.00	END NUDGE
2117.00†	16.000	81.620	2104.05	-20.24	18.86	128.06	40°05'13.310"N	104°41'43.398"W	0.00	
2217.00†	16.000	81.620	2200.17	-24.55	22.88	155.33	40°05'13.350"N	104°41'43.047"W	0.00	
2317.00†	16.000	81.620	2296.30	-28.86	26.90	182.60	40°05'13.390"N	104°41'42.697"W	0.00	
2417.00†	16.000	81.620	2392.43	-33.17	30.92	209.87	40°05'13.430"N	104°41'42.346"W	0.00	
2517.00†	16.000	81.620	2488.55	-37.48	34.93	237.14	40°05'13.469"N	104°41'41.995"W	0.00	
2617.00†	16.000	81.620	2584.68	-41.79	38.95	264.41	40°05'13.509"N	104°41'41.644"W	0.00	
2717.00†	16.000	81.620	2680.80	-46.10	42.97	291.68	40°05'13.549"N	104°41'41.293"W	0.00	
2817.00†	16.000	81.620	2776.93	-50.41	46.98	318.95	40°05'13.588"N	104°41'40.942"W	0.00	
2917.00†	16.000	81.620	2873.06	-54.71	51.00	346.22	40°05'13.628"N	104°41'40.592"W	0.00	
3017.00†	16.000	81.620	2969.18	-59.02	55.02	373.49	40°05'13.668"N	104°41'40.241"W	0.00	
3117.00†	16.000	81.620	3065.31	-63.33	59.04	400.76	40°05'13.707"N	104°41'39.890"W	0.00	
3217.00†	16.000	81.620	3161.44	-67.64	63.05	428.03	40°05'13.747"N	104°41'39.539"W	0.00	
3317.00†	16.000	81.620	3257.56	-71.95	67.07	455.30	40°05'13.787"N	104°41'39.188"W	0.00	
3417.00†	16.000	81.620	3353.69	-76.26	71.09	482.57	40°05'13.826"N	104°41'38.837"W	0.00	
3517.00†	16.000	81.620	3449.81	-80.57	75.10	509.83	40°05'13.866"N	104°41'38.486"W	0.00	
3617.00†	16.000	81.620	3545.94	-84.88	79.12	537.10	40°05'13.906"N	104°41'38.136"W	0.00	
3717.00†	16.000	81.620	3642.07	-89.19	83.14	564.37	40°05'13.946"N	104°41'37.785"W	0.00	
3817.00†	16.000	81.620	3738.19	-93.50	87.16	591.64	40°05'13.985"N	104°41'37.434"W	0.00	
3917.00†	16.000	81.620	3834.32	-97.81	91.17	618.91	40°05'14.025"N	104°41'37.083"W	0.00	
4017.00†	16.000	81.620	3930.44	-102.12	95.19	646.18	40°05'14.065"N	104°41'36.732"W	0.00	



# Planned Wellpath Report

## ZIEMER 35N-E5HZ (PERMIT REV-1) PWP

Page 3 of 6



REFERENCE WELLPATH IDENTIFICATION			
Operator	KERR-MCGEE OIL & GAS ONSHORE LP	Slot	SLOT#07 ZIEMER 35N-E5HZ (223'FNL & 351'FWL, SEC.05)
Area	COLORADO	Well	ZIEMER 35N-E5HZ
Field	WELD COUNTY (KERR MCGEE)	Wellbore	ZIEMER 35N-E5HZ PWB
Facility	SEC.05-T1N-R65W		

WELLPATH DATA (135 stations) † = interpolated/extrapolated station										
MD [ft]	Inclination [°]	Azimuth [°]	TVD [ft]	Vert Sect [ft]	North [ft]	East [ft]	Latitude	Longitude	DLS [°/100ft]	Comments
4062.31†	16.000	81.620	3974.00	-104.07	97.01	658.54	40°05'14.083"N	104°41'36.573"W	0.00	PARKMAN
4117.00†	16.000	81.620	4026.57	-106.43	99.21	673.45	40°05'14.104"N	104°41'36.381"W	0.00	
4217.00†	16.000	81.620	4122.70	-110.74	103.22	700.72	40°05'14.144"N	104°41'36.031"W	0.00	
4317.00†	16.000	81.620	4218.82	-115.05	107.24	727.99	40°05'14.184"N	104°41'35.680"W	0.00	
4417.00†	16.000	81.620	4314.95	-119.36	111.26	755.26	40°05'14.223"N	104°41'35.329"W	0.00	
4517.00†	16.000	81.620	4411.08	-123.67	115.27	782.53	40°05'14.263"N	104°41'34.978"W	0.00	
4612.63†	16.000	81.620	4503.00	-127.79	119.12	808.61	40°05'14.301"N	104°41'34.642"W	0.00	SUSSEX
4617.00†	16.000	81.620	4507.20	-127.98	119.29	809.80	40°05'14.303"N	104°41'34.627"W	0.00	
4717.00†	16.000	81.620	4603.33	-132.29	123.31	837.07	40°05'14.342"N	104°41'34.276"W	0.00	
4817.00†	16.000	81.620	4699.45	-136.60	127.33	864.34	40°05'14.382"N	104°41'33.925"W	0.00	
4917.00†	16.000	81.620	4795.58	-140.91	131.34	891.61	40°05'14.422"N	104°41'33.575"W	0.00	
5017.00†	16.000	81.620	4891.71	-145.22	135.36	918.88	40°05'14.461"N	104°41'33.224"W	0.00	
5117.00†	16.000	81.620	4987.83	-149.52	139.38	946.15	40°05'14.501"N	104°41'32.873"W	0.00	
5217.00†	16.000	81.620	5083.96	-153.83	143.39	973.42	40°05'14.541"N	104°41'32.522"W	0.00	
5317.00†	16.000	81.620	5180.08	-158.14	147.41	1000.68	40°05'14.581"N	104°41'32.171"W	0.00	
5417.00†	16.000	81.620	5276.21	-162.45	151.43	1027.95	40°05'14.620"N	104°41'31.820"W	0.00	
5517.00†	16.000	81.620	5372.34	-166.76	155.45	1055.22	40°05'14.660"N	104°41'31.469"W	0.00	
5617.00†	16.000	81.620	5468.46	-171.07	159.46	1082.49	40°05'14.700"N	104°41'31.119"W	0.00	
5717.00†	16.000	81.620	5564.59	-175.38	163.48	1109.76	40°05'14.739"N	104°41'30.768"W	0.00	
5733.03	16.000	81.620	5580.00	-176.07	164.12	1114.13	40°05'14.746"N	104°41'30.711"W	0.00	BEGIN DROP
5817.00†	14.321	81.620	5661.04	-179.51	167.32	1135.86	40°05'14.777"N	104°41'30.432"W	2.00	
5917.00†	12.321	81.620	5758.35	-183.11	170.68	1158.65	40°05'14.810"N	104°41'30.139"W	2.00	
6017.00†	10.321	81.620	5856.40	-186.18	173.54	1178.07	40°05'14.839"N	104°41'29.889"W	2.00	
6117.00†	8.321	81.620	5955.07	-188.71	175.90	1194.09	40°05'14.862"N	104°41'29.683"W	2.00	
6217.00†	6.321	81.620	6054.25	-190.70	177.76	1206.70	40°05'14.880"N	104°41'29.521"W	2.00	
6317.00†	4.321	81.620	6153.82	-192.15	179.11	1215.87	40°05'14.894"N	104°41'29.403"W	2.00	
6417.00†	2.321	81.620	6253.64	-193.06	179.95	1221.60	40°05'14.902"N	104°41'29.329"W	2.00	
6517.00†	0.321	81.620	6353.61	-193.42	180.29	1223.88	40°05'14.905"N	104°41'29.299"W	2.00	
6533.03	0.000	180.615	6369.64	-193.42	180.30	1223.93	40°05'14.905"N	104°41'29.299"W	2.00	END DROP
6617.00†	0.000	180.615	6453.61	-193.42	180.30	1223.93	40°05'14.905"N	104°41'29.299"W	0.00	
6692.43†	0.000	180.615	6529.04	-193.42	180.30	1223.93	40°05'14.905"N	104°41'29.299"W	0.00	4 1/2" LINER TOP
6717.00†	0.000	180.615	6553.61	-193.42	180.30	1223.93	40°05'14.905"N	104°41'29.299"W	0.00	
6792.43	0.000	180.615	6629.04	-193.42	180.30	1223.93	40°05'14.905"N	104°41'29.299"W	0.00	KOP, BUILD @ 10°/100'
6817.00†	2.457	180.615	6653.60	-192.90	179.77	1223.92	40°05'14.900"N	104°41'29.299"W	10.00	
6917.00†	12.457	180.615	6752.63	-179.94	166.81	1223.78	40°05'14.772"N	104°41'29.301"W	10.00	
7017.00†	22.457	180.615	6847.91	-149.98	136.85	1223.46	40°05'14.476"N	104°41'29.305"W	10.00	
7117.00†	32.457	180.615	6936.53	-103.93	90.80	1222.97	40°05'14.021"N	104°41'29.311"W	10.00	
7217.00†	42.457	180.615	7015.81	-43.19	30.07	1222.31	40°05'13.421"N	104°41'29.320"W	10.00	
7218.62†	42.618	180.615	7017.00	-42.09	28.98	1222.30	40°05'13.410"N	104°41'29.320"W	10.00	SHARON SPRINGS
7317.00†	52.457	180.615	7083.34	30.40	-43.51	1221.52	40°05'12.694"N	104°41'29.330"W	10.00	
7334.86†	54.243	180.615	7094.00	44.73	-57.84	1221.37	40°05'12.552"N	104°41'29.332"W	10.00	NIOBRARA A
7357.75†	56.532	180.615	7107.00	63.56	-76.67	1221.17	40°05'12.366"N	104°41'29.335"W	10.00	NIOBRARA B
7417.00†	62.457	180.615	7137.06	114.59	-127.70	1220.62	40°05'11.862"N	104°41'29.342"W	10.00	
7517.00†	72.457	180.615	7175.35	206.83	-219.93	1219.63	40°05'10.950"N	104°41'29.354"W	10.00	
7585.22†	79.279	180.615	7192.00	272.95	-286.05	1218.92	40°05'10.297"N	104°41'29.364"W	10.00	NIOBRARA C



# Planned Wellpath Report

## ZIEMER 35N-E5HZ (PERMIT REV-1) PWP

Page 4 of 6



REFERENCE WELLPATH IDENTIFICATION			
Operator	KERR-MCGEE OIL & GAS ONSHORE LP	Slot	SLOT#07 ZIEMER 35N-E5HZ (223'FNL & 351'FWL, SEC.05)
Area	COLORADO	Well	ZIEMER 35N-E5HZ
Field	WELD COUNTY (KERR MCGEE)	Wellbore	ZIEMER 35N-E5HZ PWB
Facility	SEC.05-T1N-R65W		

WELLPATH DATA (135 stations) † = interpolated/extrapolated station										
MD [ft]	Inclination [°]	Azimuth [°]	TVD [ft]	Vert Sect [ft]	North [ft]	East [ft]	Latitude	Longitude	DLS [°/100ft]	Comments
7617.00†	82.457	180.615	7197.04	304.32	-317.42	1218.58	40°05'09.987"N	104°41'29.368"W	10.00	
7691.88	89.944	180.615	7202.00	378.98	-392.07	1217.78	40°05'09.249"N	104°41'29.378"W	10.00	LANDING POINT
7717.00†	89.944	180.615	7202.02	404.10	-417.19	1217.51	40°05'09.001"N	104°41'29.382"W	0.00	
7817.00†	89.944	180.615	7202.12	504.10	-517.19	1216.44	40°05'08.013"N	104°41'29.396"W	0.00	
7917.00†	89.944	180.615	7202.22	604.10	-617.18	1215.37	40°05'07.025"N	104°41'29.410"W	0.00	
8017.00†	89.944	180.615	7202.32	704.10	-717.18	1214.29	40°05'06.036"N	104°41'29.423"W	0.00	
8117.00†	89.944	180.615	7202.41	804.10	-817.17	1213.22	40°05'05.048"N	104°41'29.437"W	0.00	
8217.00†	89.944	180.615	7202.51	904.10	-917.17	1212.15	40°05'04.060"N	104°41'29.451"W	0.00	
8317.00†	89.944	180.615	7202.61	1004.10	-1017.16	1211.07	40°05'03.072"N	104°41'29.465"W	0.00	
8417.00†	89.944	180.615	7202.70	1104.10	-1117.15	1210.00	40°05'02.084"N	104°41'29.479"W	0.00	
8517.00†	89.944	180.615	7202.80	1204.10	-1217.15	1208.93	40°05'01.096"N	104°41'29.493"W	0.00	
8617.00†	89.944	180.615	7202.90	1304.10	-1317.14	1207.85	40°05'00.107"N	104°41'29.507"W	0.00	
8717.00†	89.944	180.615	7202.99	1404.10	-1417.14	1206.78	40°04'59.119"N	104°41'29.520"W	0.00	
8817.00†	89.944	180.615	7203.09	1504.10	-1517.13	1205.71	40°04'58.131"N	104°41'29.534"W	0.00	
8917.00†	89.944	180.615	7203.19	1604.10	-1617.12	1204.63	40°04'57.143"N	104°41'29.548"W	0.00	
9017.00†	89.944	180.615	7203.28	1704.10	-1717.12	1203.56	40°04'56.155"N	104°41'29.562"W	0.00	
9117.00†	89.944	180.615	7203.38	1804.10	-1817.11	1202.49	40°04'55.167"N	104°41'29.576"W	0.00	
9217.00†	89.944	180.615	7203.48	1904.10	-1917.11	1201.41	40°04'54.179"N	104°41'29.590"W	0.00	
9317.00†	89.944	180.615	7203.58	2004.10	-2017.10	1200.34	40°04'53.190"N	104°41'29.604"W	0.00	
9417.00†	89.944	180.615	7203.67	2104.10	-2117.10	1199.27	40°04'52.202"N	104°41'29.618"W	0.00	
9517.00†	89.944	180.615	7203.77	2204.10	-2217.09	1198.19	40°04'51.214"N	104°41'29.631"W	0.00	
9617.00†	89.944	180.615	7203.87	2304.10	-2317.08	1197.12	40°04'50.226"N	104°41'29.645"W	0.00	
9717.00†	89.944	180.615	7203.96	2404.10	-2417.08	1196.05	40°04'49.238"N	104°41'29.659"W	0.00	
9817.00†	89.944	180.615	7204.06	2504.10	-2517.07	1194.97	40°04'48.250"N	104°41'29.673"W	0.00	
9917.00†	89.944	180.615	7204.16	2604.10	-2617.07	1193.90	40°04'47.261"N	104°41'29.687"W	0.00	
10017.00†	89.944	180.615	7204.25	2704.10	-2717.06	1192.83	40°04'46.273"N	104°41'29.701"W	0.00	
10117.00†	89.944	180.615	7204.35	2804.10	-2817.06	1191.75	40°04'45.285"N	104°41'29.715"W	0.00	
10217.00†	89.944	180.615	7204.45	2904.10	-2917.05	1190.68	40°04'44.297"N	104°41'29.729"W	0.00	
10317.00†	89.944	180.615	7204.54	3004.10	-3017.04	1189.61	40°04'43.309"N	104°41'29.742"W	0.00	
10417.00†	89.944	180.615	7204.64	3104.10	-3117.04	1188.53	40°04'42.321"N	104°41'29.756"W	0.00	
10517.00†	89.944	180.615	7204.74	3204.10	-3217.03	1187.46	40°04'41.332"N	104°41'29.770"W	0.00	
10617.00†	89.944	180.615	7204.83	3304.10	-3317.03	1186.38	40°04'40.344"N	104°41'29.784"W	0.00	
10717.00†	89.944	180.615	7204.93	3404.10	-3417.02	1185.31	40°04'39.356"N	104°41'29.798"W	0.00	
10817.00†	89.944	180.615	7205.03	3504.10	-3517.01	1184.24	40°04'38.368"N	104°41'29.812"W	0.00	
10917.00†	89.944	180.615	7205.13	3604.10	-3617.01	1183.16	40°04'37.380"N	104°41'29.826"W	0.00	
11017.00†	89.944	180.615	7205.22	3704.10	-3717.00	1182.09	40°04'36.392"N	104°41'29.840"W	0.00	
11117.00†	89.944	180.615	7205.32	3804.10	-3817.00	1181.02	40°04'35.403"N	104°41'29.853"W	0.00	
11217.00†	89.944	180.615	7205.42	3904.10	-3916.99	1179.94	40°04'34.415"N	104°41'29.867"W	0.00	
11317.00†	89.944	180.615	7205.51	4004.10	-4016.99	1178.87	40°04'33.427"N	104°41'29.881"W	0.00	
11417.00†	89.944	180.615	7205.61	4104.10	-4116.98	1177.80	40°04'32.439"N	104°41'29.895"W	0.00	
11517.00†	89.944	180.615	7205.71	4204.10	-4216.97	1176.72	40°04'31.451"N	104°41'29.909"W	0.00	
11617.00†	89.944	180.615	7205.80	4304.10	-4316.97	1175.65	40°04'30.463"N	104°41'29.923"W	0.00	
11717.00†	89.944	180.615	7205.90	4404.10	-4416.96	1174.58	40°04'29.475"N	104°41'29.937"W	0.00	
11817.00†	89.944	180.615	7206.00	4504.10	-4516.96	1173.50	40°04'28.486"N	104°41'29.951"W	0.00	
11819.38	89.944	180.615	7206.00 <sup>1</sup>	4506.48	-4519.34	1173.48	40°04'28.463"N	104°41'29.951"W	0.00	TOTAL DEPTH



# Planned Wellpath Report

## ZIEMER 35N-E5HZ (PERMIT REV-1) PWP

Page 5 of 6



### REFERENCE WELLPATH IDENTIFICATION

Operator	KERR-MCGEE OIL & GAS ONSHORE LP	Slot	SLOT#07 ZIEMER 35N-E5HZ (223'FNL & 351'FWL, SEC.05)
Area	COLORADO	Well	ZIEMER 35N-E5HZ
Field	WELD COUNTY (KERR MCGEE)	Wellbore	ZIEMER 35N-E5HZ PWB
Facility	SEC.05-T1N-R65W		

### HOLE & CASING SECTIONS - Ref Wellbore: ZIEMER 35N-E5HZ PWB      Ref Wellpath: ZIEMER 35N-E5HZ (PERMIT REV-1) PWP

String/Diameter	Start MD [ft]	End MD [ft]	Interval [ft]	Start TVD [ft]	End TVD [ft]	Start N/S [ft]	Start E/W [ft]	End N/S [ft]	End E/W [ft]
13.5in Open Hole	17.00	1091.00	1074.00	17.00	1091.00	0.00	0.00	0.00	0.00
9.625in Casing Surface	17.00	1091.00	1074.00	17.00	1091.00	0.00	0.00	0.00	0.00
8.75in Open Hole	1091.00	7691.88	6600.88	1091.00	7202.00	0.00	0.00	-392.08	1217.78
7in Casing Intermediate	17.00	7691.88	7674.88	17.00	7202.00	0.00	0.00	-392.08	1217.78
6.125in Open Hole	7691.88	11819.38	4127.50	7202.00	7206.00	-392.08	1217.78	-4519.34	1173.48
4.5in Casing Production	17.00	11819.38	11802.38	17.00	7206.00	0.00	0.00	-4519.34	1173.48

### TARGETS

Name	MD [ft]	TVD [ft]	North [ft]	East [ft]	Grid East [US ft]	Grid North [US ft]	Latitude	Longitude	Shape
BOYD PAD HARDLINES LINES (460' SETBACKS SEC.05)		4974.00	-4619.80	2521.30	3227559.17	1270954.76	40°04'27.469"N	104°41'12.613"W	polygon
BOYD PAD SECTION LINES (SEC.05)		4974.00	-4619.80	2521.30	3227559.17	1270954.76	40°04'27.469"N	104°41'12.613"W	polygon
1) ZIEMER 35N-E5HZ BHL ON PLAT REV-1 (460'FSL & 1570'FWL, SEC.05)	11819.38	7206.00	-4519.34	1173.48	3226210.55	1271042.99	40°04'28.463"N	104°41'29.951"W	point

### SURVEY PROGRAM - Ref Wellbore: ZIEMER 35N-E5HZ PWB      Ref Wellpath: ZIEMER 35N-E5HZ (PERMIT REV-1) PWP

Start MD [ft]	End MD [ft]	Positional Uncertainty Model	Log Name/Comment	Wellbore
17.00	7691.88	NaviTrak (Standard)		ZIEMER 35N-E5HZ PWB
7691.88	11819.38	OnTrak (Standard)		ZIEMER 35N-E5HZ PWB



# Planned Wellpath Report

**ZIEMER 35N-E5HZ (PERMIT REV-1) PWP**  
Page 6 of 6



## REFERENCE WELLPATH IDENTIFICATION

Operator	KERR-MCGEE OIL & GAS ONSHORE LP	Slot	SLOT#07 ZIEMER 35N-E5HZ (223'FNL & 351'FWL, SEC.05)
Area	COLORADO	Well	ZIEMER 35N-E5HZ
Field	WELD COUNTY (KERR MCGEE)	Wellbore	ZIEMER 35N-E5HZ PWB
Facility	SEC.05-T1N-R65W		

## WELLPATH COMMENTS

MD [ft]	Inclination [°]	Azimuth [°]	TVD [ft]	Comment
1041.00	0.000	81.620	1041.00	FOX HILLS BASE
4062.31	16.000	81.620	3974.00	PARKMAN
4612.63	16.000	81.620	4503.00	SUSSEX
6692.43	0.000	180.615	6529.04	4 1/2" LINER TOP
7218.62	42.618	180.615	7017.00	SHARON SPRINGS
7334.86	54.243	180.615	7094.00	NIOBRARA A
7357.75	56.532	180.615	7107.00	NIOBRARA B
7585.22	79.279	180.615	7192.00	NIOBRARA C