

KERR-MCGEE OIL & GAS ONSHORE LP

Location: COLORADO Slot: SLOT#04 ZIEMER 34N-5HZ (286'FNL & 287'FWL, SEC.05)
 Field: WELD COUNTY (KERR MCGEE) Well: ZIEMER 34N-5HZ
 Facility: SEC.05-T1N-R65W Wellbore: ZIEMER 34N-5HZ PWB

Plot reference wellpath is ZIEMER 34N-5HZ (PERMIT REV-1) PWP

| | |
|--|--|
| True vertical depths are referenced to Rig on SLOT#04 ZIEMER 34N-5HZ (286'FNL & 287'FWL, SEC.05) (RKB) | Grid System: NAD83 / Lambert Colorado SP, Northern Zone (501), US feet |
| Measured depths are referenced to Rig on SLOT#04 ZIEMER 34N-5HZ (286'FNL & 287'FWL, SEC.05) (RKB) | North Reference: True north |
| Rig on SLOT#04 ZIEMER 34N-5HZ (286'FNL & 287'FWL, SEC.05) (RKB) to Mean Sea Level: 4974 feet | Scale: True distance |
| Mean Sea Level to Mud line (At Slot: SLOT#04 ZIEMER 34N-5HZ (286'FNL & 287'FWL, SEC.05)): 0 feet | Depths are in feet |
| Coordinates are in feet referenced to Slot | Created by: wjkgf02 on 6/19/2013 |

Location Information

| Facility Name | Grid East (US ft) | Grid North (US ft) | Latitude | Longitude | | |
|---|-------------------|--------------------|-------------------|--------------------|----------------|-----------------|
| SEC.05-T1N-R65W | 3227276.210 | 1273237.510 | 40°04'50.053"N | 104°41'15.884"W | | |
| Slot | Local N (ft) | Local E (ft) | Grid East (US ft) | Grid North (US ft) | Latitude | Longitude |
| SLOT#04 ZIEMER 34N-5HZ (286'FNL & 287'FWL, SEC.05) | 2271.35 | -2322.57 | 3224933.030 | 1275487.397 | 40°05'12.498"N | 104°41'45.886"W |
| Rig on SLOT#04 ZIEMER 34N-5HZ (286'FNL & 287'FWL, SEC.05) (RKB) to Mud line (At Slot: SLOT#04 ZIEMER 34N-5HZ (286'FNL & 287'FWL, SEC.05)) | | | | | 497.4ft | |
| Mean Sea Level to Mud line (At Slot: SLOT#04 ZIEMER 34N-5HZ (286'FNL & 287'FWL, SEC.05)) | | | | | 0ft | |
| Rig on SLOT#04 ZIEMER 34N-5HZ (286'FNL & 287'FWL, SEC.05) (RKB) to Mean Sea Level | | | | | 497.4ft | |

Survey Program

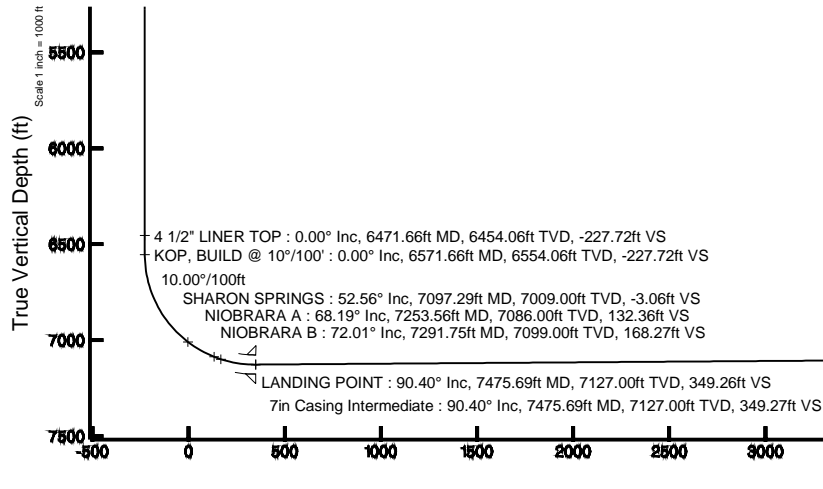
| Start MD (ft) | End MD (ft) | Tool | Model | Log Name/Comment | Wellbore |
|---------------|-------------|----------|---------------------|------------------|--------------------|
| 17.00 | 7475.69 | Navitrak | Navitrak (Standard) | | ZIEMER 34N-5HZ PWB |
| 7475.69 | 11599.95 | OnTrak | OnTrak (Standard) | | ZIEMER 34N-5HZ PWB |

Well Profile Data

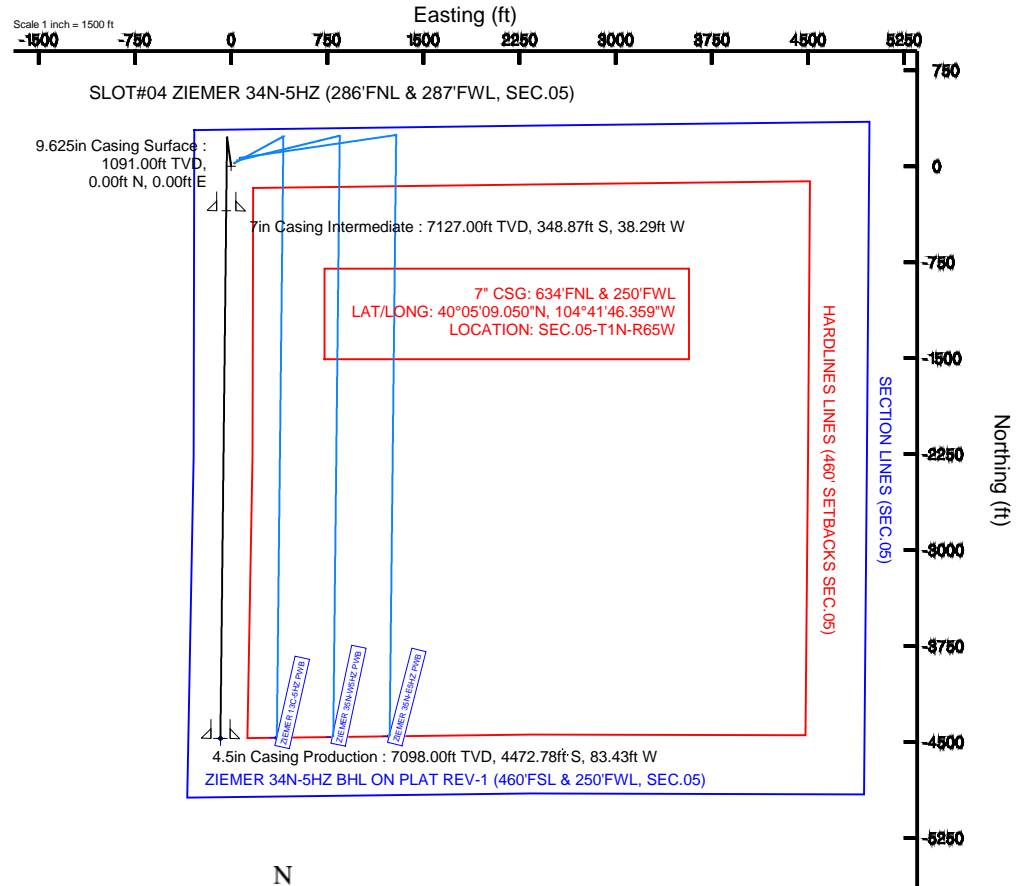
| Design Comment | MD (ft) | Inc (°) | Az (°) | TVD (ft) | Local N (ft) | Local E (ft) | DLS (°/100ft) | VS (ft) |
|-----------------------|----------|---------|---------|----------|--------------|--------------|---------------|---------|
| TIE-ON | 17.00 | 0.000 | 352.020 | 17.00 | 0.00 | 0.00 | 0.00 | 0.00 |
| BEGIN NUDGE | 1200.00 | 0.000 | 352.020 | 1200.00 | 0.00 | 0.00 | 0.00 | 0.00 |
| END NUDGE | 1700.00 | 10.000 | 352.020 | 1697.47 | 43.10 | -6.04 | 2.00 | -43.03 |
| BEGIN DROP | 2525.07 | 10.000 | 352.020 | 2510.00 | 184.99 | -25.93 | 0.00 | -184.69 |
| END DROP | 3025.07 | 0.000 | 180.627 | 3007.47 | 228.09 | -31.97 | 2.00 | -227.72 |
| KOP, BUILD @ 10°/100' | 6571.66 | 0.000 | 180.627 | 6554.06 | 228.09 | -31.97 | 0.00 | -227.72 |
| LANDING POINT | 7475.69 | 90.403 | 180.627 | 7127.00 | -348.87 | -38.29 | 10.00 | 349.26 |
| TOTAL DEPTH | 11599.95 | 90.403 | 180.627 | 7098.00 | -4472.78 | -83.43 | 0.00 | 4473.42 |

Targets

| Name | MD (ft) | TVD (ft) | Local N (ft) | Local E (ft) | Grid East (US ft) | Grid North (US ft) | Latitude | Longitude |
|--|----------|----------|--------------|--------------|-------------------|--------------------|-----------------|-----------------|
| BOYD PAD HARDLINES LINES (460' SETBACKS SEC.05) | 4974.00 | -4556.45 | 2585.05 | 3227559.17 | 1270954.76 | 40°04'27.469"N | 104°41'12.613"W | |
| BOYD PAD SECTION LINES (SEC.05) | 4974.00 | -4556.45 | 2585.05 | 3227559.17 | 1270954.76 | 40°04'27.469"N | 104°41'12.613"W | |
| ZIEMER 34N-5HZ BHL ON PLAT REV-1 (460'FSL & 250'FWL, SEC.05) | 11599.95 | 7098.00 | -4472.78 | -83.43 | 3224890.16 | 1271014.23 | 40°04'28.297"N | 104°41'46.939"W |



Azimuth 180.63° with reference 0.00 N, 0.00 E



BGGM (1945.0 to 2014.0) Dip: 66.71° Field: 52658.9 nT
 Magnetic North is 8.59 degrees East of True North (at 6/19/2013)

To correct azimuth from Magnetic to True add 8.59 degrees

4.5in Casing Production : 90.40° Inc, 11599.95ft MD, 7098.00ft TVD, 4473.42ft VS
 TOTAL DEPTH : 90.40° Inc, 11599.95ft MD, 7098.00ft TVD, 4473.42ft VS
 ZIEMER 34N-5HZ BHL ON PLAT REV-1 (460'FSL & 250'FWL, SEC.05)

Scale 1 inch = 1000 ft



Planned Wellpath Report

ZIEMER 34N-5HZ (PERMIT REV-1) PWP

Page 1 of 6



REFERENCE WELLPATH IDENTIFICATION

| | | | |
|----------|--|----------|---|
| Operator | KERR-MCGEE OIL & GAS ONSHORE LP | Slot | SLOT#04 ZIEMER 34N-5HZ (286'FNL & 287'FWL, SEC.05) |
| Area | COLORADO | Well | ZIEMER 34N-5HZ |
| Field | WELD COUNTY (KERR MCGEE) | Wellbore | ZIEMER 34N-5HZ PWB |
| Facility | SEC.05-T1N-R65W | | |

REPORT SETUP INFORMATION

| | | | |
|---------------------|--|----------------------|---|
| Projection System | NAD83 / Lambert Colorado SP, Northern Zone (501), US feet | Software System | WellArchitect® 4.0.0 |
| North Reference | True | User | Wilsjef02 |
| Scale | 0.999961 | Report Generated | 6/19/2013 at 09:16:01 |
| Convergence at slot | n/a | Database/Source file | WellArchitectDB/ZIEMER_34N-5HZ_PWB.xml |

WELLPATH LOCATION

| | Local coordinates | | Grid coordinates | | Geographic coordinates | |
|-----------------------|-------------------|----------|-------------------|-------------------|------------------------|------------------------|
| | North[ft] | East[ft] | Easting[US ft] | Northing[US ft] | Latitude | Longitude |
| Slot Location | 2271.35 | -2322.57 | 3224933.03 | 1275487.40 | 40°05'12.498"N | 104°41'45.866"W |
| Facility Reference Pt | | | 3227276.21 | 1273237.51 | 40°04'50.053"N | 104°41'15.984"W |
| Field Reference Pt | | | 3197771.84 | 1268891.29 | 40°04'09.600"N | 104°47'36.000"W |

WELLPATH DATUM

| | | | |
|--------------------------|--|--|--------------------------|
| Calculation method | Minimum curvature | Rig on SLOT#04 ZIEMER 34N-5HZ (286'FNL & 287'FWL, SEC.05) (RKB) to Facility Vertical Datum | 4974.00ft |
| Horizontal Reference Pt | Slot | Rig on SLOT#04 ZIEMER 34N-5HZ (286'FNL & 287'FWL, SEC.05) (RKB) to Mean Sea Level | 4974.00ft |
| Vertical Reference Pt | Rig on SLOT#04 ZIEMER 34N-5HZ (286'FNL & 287'FWL, SEC.05) (RKB) | Rig on SLOT#04 ZIEMER 34N-5HZ (286'FNL & 287'FWL, SEC.05) (RKB) to Mud Line at Slot (SLOT#04 ZIEMER 34N-5HZ (286'FNL & 287'FWL, SEC.05)) | 4974.00ft |
| MD Reference Pt | Rig on SLOT#04 ZIEMER 34N-5HZ (286'FNL & 287'FWL, SEC.05) (RKB) | Section Origin | N 0.00, E 0.00 ft |
| Field Vertical Reference | Mean Sea Level | Section Azimuth | 180.63° |



Planned Wellpath Report

ZIEMER 34N-5HZ (PERMIT REV-1) PWP

Page 2 of 6



| REFERENCE WELLPATH IDENTIFICATION | | | |
|-----------------------------------|---------------------------------|----------|--|
| Operator | KERR-MCGEE OIL & GAS ONSHORE LP | Slot | SLOT#04 ZIEMER 34N-5HZ (286'FNL & 287'FWL, SEC.05) |
| Area | COLORADO | Well | ZIEMER 34N-5HZ |
| Field | WELD COUNTY (KERR MCGEE) | Wellbore | ZIEMER 34N-5HZ PWB |
| Facility | SEC.05-T1N-R65W | | |

| WELLPATH DATA (131 stations) † = interpolated/extrapolated station | | | | | | | | | | |
|--|-----------------|-------------|----------|----------------|------------|-----------|----------------|-----------------|---------------|----------------|
| MD [ft] | Inclination [°] | Azimuth [°] | TVD [ft] | Vert Sect [ft] | North [ft] | East [ft] | Latitude | Longitude | DLS [°/100ft] | Comments |
| 0.00† | 0.000 | 352.020 | 0.00 | 0.00 | 0.00 | 0.00 | 40°05'12.498"N | 104°41'45.866"W | 0.00 | |
| 17.00 | 0.000 | 352.020 | 17.00 | 0.00 | 0.00 | 0.00 | 40°05'12.498"N | 104°41'45.866"W | 0.00 | TIE-ON |
| 117.00† | 0.000 | 352.020 | 117.00 | 0.00 | 0.00 | 0.00 | 40°05'12.498"N | 104°41'45.866"W | 0.00 | |
| 217.00† | 0.000 | 352.020 | 217.00 | 0.00 | 0.00 | 0.00 | 40°05'12.498"N | 104°41'45.866"W | 0.00 | |
| 317.00† | 0.000 | 352.020 | 317.00 | 0.00 | 0.00 | 0.00 | 40°05'12.498"N | 104°41'45.866"W | 0.00 | |
| 417.00† | 0.000 | 352.020 | 417.00 | 0.00 | 0.00 | 0.00 | 40°05'12.498"N | 104°41'45.866"W | 0.00 | |
| 517.00† | 0.000 | 352.020 | 517.00 | 0.00 | 0.00 | 0.00 | 40°05'12.498"N | 104°41'45.866"W | 0.00 | |
| 617.00† | 0.000 | 352.020 | 617.00 | 0.00 | 0.00 | 0.00 | 40°05'12.498"N | 104°41'45.866"W | 0.00 | |
| 717.00† | 0.000 | 352.020 | 717.00 | 0.00 | 0.00 | 0.00 | 40°05'12.498"N | 104°41'45.866"W | 0.00 | |
| 817.00† | 0.000 | 352.020 | 817.00 | 0.00 | 0.00 | 0.00 | 40°05'12.498"N | 104°41'45.866"W | 0.00 | |
| 917.00† | 0.000 | 352.020 | 917.00 | 0.00 | 0.00 | 0.00 | 40°05'12.498"N | 104°41'45.866"W | 0.00 | |
| 1017.00† | 0.000 | 352.020 | 1017.00 | 0.00 | 0.00 | 0.00 | 40°05'12.498"N | 104°41'45.866"W | 0.00 | |
| 1041.00† | 0.000 | 352.020 | 1041.00 | 0.00 | 0.00 | 0.00 | 40°05'12.498"N | 104°41'45.866"W | 0.00 | FOX HILLS BASE |
| 1117.00† | 0.000 | 352.020 | 1117.00 | 0.00 | 0.00 | 0.00 | 40°05'12.498"N | 104°41'45.866"W | 0.00 | |
| 1200.00 | 0.000 | 352.020 | 1200.00 | 0.00 | 0.00 | 0.00 | 40°05'12.498"N | 104°41'45.866"W | 0.00 | BEGIN NUDGE |
| 1217.00† | 0.340 | 352.020 | 1217.00 | -0.05 | 0.05 | -0.01 | 40°05'12.498"N | 104°41'45.866"W | 2.00 | |
| 1317.00† | 2.340 | 352.020 | 1316.97 | -2.36 | 2.37 | -0.33 | 40°05'12.521"N | 104°41'45.870"W | 2.00 | |
| 1417.00† | 4.340 | 352.020 | 1416.79 | -8.12 | 8.14 | -1.14 | 40°05'12.578"N | 104°41'45.881"W | 2.00 | |
| 1517.00† | 6.340 | 352.020 | 1516.35 | -17.32 | 17.35 | -2.43 | 40°05'12.669"N | 104°41'45.897"W | 2.00 | |
| 1617.00† | 8.340 | 352.020 | 1615.53 | -29.95 | 30.00 | -4.21 | 40°05'12.794"N | 104°41'45.920"W | 2.00 | |
| 1700.00 | 10.000 | 352.020 | 1697.47 | -43.03 | 43.10 | -6.04 | 40°05'12.924"N | 104°41'45.944"W | 2.00 | END NUDGE |
| 1717.00† | 10.000 | 352.020 | 1714.21 | -45.95 | 46.02 | -6.45 | 40°05'12.953"N | 104°41'45.949"W | 0.00 | |
| 1817.00† | 10.000 | 352.020 | 1812.69 | -63.12 | 63.22 | -8.86 | 40°05'13.123"N | 104°41'45.980"W | 0.00 | |
| 1917.00† | 10.000 | 352.020 | 1911.17 | -80.29 | 80.42 | -11.27 | 40°05'13.293"N | 104°41'46.011"W | 0.00 | |
| 2017.00† | 10.000 | 352.020 | 2009.65 | -97.46 | 97.61 | -13.68 | 40°05'13.463"N | 104°41'46.042"W | 0.00 | |
| 2117.00† | 10.000 | 352.020 | 2108.13 | -114.63 | 114.81 | -16.09 | 40°05'13.633"N | 104°41'46.073"W | 0.00 | |
| 2217.00† | 10.000 | 352.020 | 2206.61 | -131.80 | 132.01 | -18.51 | 40°05'13.803"N | 104°41'46.104"W | 0.00 | |
| 2317.00† | 10.000 | 352.020 | 2305.09 | -148.97 | 149.20 | -20.92 | 40°05'13.972"N | 104°41'46.135"W | 0.00 | |
| 2417.00† | 10.000 | 352.020 | 2403.57 | -166.14 | 166.40 | -23.33 | 40°05'14.142"N | 104°41'46.166"W | 0.00 | |
| 2517.00† | 10.000 | 352.020 | 2502.05 | -183.31 | 183.60 | -25.74 | 40°05'14.312"N | 104°41'46.197"W | 0.00 | |
| 2525.07 | 10.000 | 352.020 | 2510.00 | -184.69 | 184.99 | -25.93 | 40°05'14.326"N | 104°41'46.200"W | 0.00 | BEGIN DROP |
| 2617.00† | 8.161 | 352.020 | 2600.77 | -199.04 | 199.35 | -27.95 | 40°05'14.468"N | 104°41'46.226"W | 2.00 | |
| 2717.00† | 6.161 | 352.020 | 2699.99 | -211.36 | 211.70 | -29.68 | 40°05'14.590"N | 104°41'46.248"W | 2.00 | |
| 2817.00† | 4.161 | 352.020 | 2799.58 | -220.26 | 220.61 | -30.93 | 40°05'14.678"N | 104°41'46.264"W | 2.00 | |
| 2917.00† | 2.161 | 352.020 | 2899.42 | -225.71 | 226.07 | -31.69 | 40°05'14.732"N | 104°41'46.274"W | 2.00 | |
| 3017.00† | 0.161 | 352.020 | 2999.40 | -227.71 | 228.08 | -31.97 | 40°05'14.752"N | 104°41'46.277"W | 2.00 | |
| 3025.07 | 0.000 | 180.627 | 3007.47 | -227.72 | 228.09 | -31.97 | 40°05'14.752"N | 104°41'46.277"W | 2.00 | END DROP |
| 3117.00† | 0.000 | 180.627 | 3099.40 | -227.72 | 228.09 | -31.97 | 40°05'14.752"N | 104°41'46.277"W | 0.00 | |
| 3217.00† | 0.000 | 180.627 | 3199.40 | -227.72 | 228.09 | -31.97 | 40°05'14.752"N | 104°41'46.277"W | 0.00 | |
| 3317.00† | 0.000 | 180.627 | 3299.40 | -227.72 | 228.09 | -31.97 | 40°05'14.752"N | 104°41'46.277"W | 0.00 | |
| 3417.00† | 0.000 | 180.627 | 3399.40 | -227.72 | 228.09 | -31.97 | 40°05'14.752"N | 104°41'46.277"W | 0.00 | |
| 3517.00† | 0.000 | 180.627 | 3499.40 | -227.72 | 228.09 | -31.97 | 40°05'14.752"N | 104°41'46.277"W | 0.00 | |
| 3617.00† | 0.000 | 180.627 | 3599.40 | -227.72 | 228.09 | -31.97 | 40°05'14.752"N | 104°41'46.277"W | 0.00 | |
| 3717.00† | 0.000 | 180.627 | 3699.40 | -227.72 | 228.09 | -31.97 | 40°05'14.752"N | 104°41'46.277"W | 0.00 | |
| 3817.00† | 0.000 | 180.627 | 3799.40 | -227.72 | 228.09 | -31.97 | 40°05'14.752"N | 104°41'46.277"W | 0.00 | |



Planned Wellpath Report

ZIEMER 34N-5HZ (PERMIT REV-1) PWP

Page 3 of 6



REFERENCE WELLPATH IDENTIFICATION

| | | | |
|----------|---------------------------------|----------|--|
| Operator | KERR-MCGEE OIL & GAS ONSHORE LP | Slot | SLOT#04 ZIEMER 34N-5HZ (286'FNL & 287'FWL, SEC.05) |
| Area | COLORADO | Well | ZIEMER 34N-5HZ |
| Field | WELD COUNTY (KERR MCGEE) | Wellbore | ZIEMER 34N-5HZ PWB |
| Facility | SEC.05-T1N-R65W | | |

WELLPATH DATA (131 stations) † = interpolated/extrapolated station

| MD [ft] | Inclination [°] | Azimuth [°] | TVD [ft] | Vert Sect [ft] | North [ft] | East [ft] | Latitude | Longitude | DLS [°/100ft] | Comments |
|----------|-----------------|-------------|----------|----------------|------------|-----------|----------------|-----------------|---------------|-----------------------|
| 3917.00† | 0.000 | 180.627 | 3899.40 | -227.72 | 228.09 | -31.97 | 40°05'14.752"N | 104°41'46.277"W | 0.00 | |
| 3983.60† | 0.000 | 180.627 | 3966.00 | -227.72 | 228.09 | -31.97 | 40°05'14.752"N | 104°41'46.277"W | 0.00 | PARKMAN |
| 4017.00† | 0.000 | 180.627 | 3999.40 | -227.72 | 228.09 | -31.97 | 40°05'14.752"N | 104°41'46.277"W | 0.00 | |
| 4117.00† | 0.000 | 180.627 | 4099.40 | -227.72 | 228.09 | -31.97 | 40°05'14.752"N | 104°41'46.277"W | 0.00 | |
| 4217.00† | 0.000 | 180.627 | 4199.40 | -227.72 | 228.09 | -31.97 | 40°05'14.752"N | 104°41'46.277"W | 0.00 | |
| 4317.00† | 0.000 | 180.627 | 4299.40 | -227.72 | 228.09 | -31.97 | 40°05'14.752"N | 104°41'46.277"W | 0.00 | |
| 4417.00† | 0.000 | 180.627 | 4399.40 | -227.72 | 228.09 | -31.97 | 40°05'14.752"N | 104°41'46.277"W | 0.00 | |
| 4512.60† | 0.000 | 180.627 | 4495.00 | -227.72 | 228.09 | -31.97 | 40°05'14.752"N | 104°41'46.277"W | 0.00 | SUSSEX |
| 4517.00† | 0.000 | 180.627 | 4499.40 | -227.72 | 228.09 | -31.97 | 40°05'14.752"N | 104°41'46.277"W | 0.00 | |
| 4617.00† | 0.000 | 180.627 | 4599.40 | -227.72 | 228.09 | -31.97 | 40°05'14.752"N | 104°41'46.277"W | 0.00 | |
| 4717.00† | 0.000 | 180.627 | 4699.40 | -227.72 | 228.09 | -31.97 | 40°05'14.752"N | 104°41'46.277"W | 0.00 | |
| 4817.00† | 0.000 | 180.627 | 4799.40 | -227.72 | 228.09 | -31.97 | 40°05'14.752"N | 104°41'46.277"W | 0.00 | |
| 4917.00† | 0.000 | 180.627 | 4899.40 | -227.72 | 228.09 | -31.97 | 40°05'14.752"N | 104°41'46.277"W | 0.00 | |
| 5017.00† | 0.000 | 180.627 | 4999.40 | -227.72 | 228.09 | -31.97 | 40°05'14.752"N | 104°41'46.277"W | 0.00 | |
| 5117.00† | 0.000 | 180.627 | 5099.40 | -227.72 | 228.09 | -31.97 | 40°05'14.752"N | 104°41'46.277"W | 0.00 | |
| 5217.00† | 0.000 | 180.627 | 5199.40 | -227.72 | 228.09 | -31.97 | 40°05'14.752"N | 104°41'46.277"W | 0.00 | |
| 5317.00† | 0.000 | 180.627 | 5299.40 | -227.72 | 228.09 | -31.97 | 40°05'14.752"N | 104°41'46.277"W | 0.00 | |
| 5417.00† | 0.000 | 180.627 | 5399.40 | -227.72 | 228.09 | -31.97 | 40°05'14.752"N | 104°41'46.277"W | 0.00 | |
| 5517.00† | 0.000 | 180.627 | 5499.40 | -227.72 | 228.09 | -31.97 | 40°05'14.752"N | 104°41'46.277"W | 0.00 | |
| 5617.00† | 0.000 | 180.627 | 5599.40 | -227.72 | 228.09 | -31.97 | 40°05'14.752"N | 104°41'46.277"W | 0.00 | |
| 5717.00† | 0.000 | 180.627 | 5699.40 | -227.72 | 228.09 | -31.97 | 40°05'14.752"N | 104°41'46.277"W | 0.00 | |
| 5817.00† | 0.000 | 180.627 | 5799.40 | -227.72 | 228.09 | -31.97 | 40°05'14.752"N | 104°41'46.277"W | 0.00 | |
| 5917.00† | 0.000 | 180.627 | 5899.40 | -227.72 | 228.09 | -31.97 | 40°05'14.752"N | 104°41'46.277"W | 0.00 | |
| 6017.00† | 0.000 | 180.627 | 5999.40 | -227.72 | 228.09 | -31.97 | 40°05'14.752"N | 104°41'46.277"W | 0.00 | |
| 6117.00† | 0.000 | 180.627 | 6099.40 | -227.72 | 228.09 | -31.97 | 40°05'14.752"N | 104°41'46.277"W | 0.00 | |
| 6217.00† | 0.000 | 180.627 | 6199.40 | -227.72 | 228.09 | -31.97 | 40°05'14.752"N | 104°41'46.277"W | 0.00 | |
| 6317.00† | 0.000 | 180.627 | 6299.40 | -227.72 | 228.09 | -31.97 | 40°05'14.752"N | 104°41'46.277"W | 0.00 | |
| 6417.00† | 0.000 | 180.627 | 6399.40 | -227.72 | 228.09 | -31.97 | 40°05'14.752"N | 104°41'46.277"W | 0.00 | |
| 6471.66† | 0.000 | 180.627 | 6454.06 | -227.72 | 228.09 | -31.97 | 40°05'14.752"N | 104°41'46.277"W | 0.00 | 4 1/2" LINER TOP |
| 6517.00† | 0.000 | 180.627 | 6499.40 | -227.72 | 228.09 | -31.97 | 40°05'14.752"N | 104°41'46.277"W | 0.00 | |
| 6571.66 | 0.000 | 180.627 | 6554.06 | -227.72 | 228.09 | -31.97 | 40°05'14.752"N | 104°41'46.277"W | 0.00 | KOP, BUILD @ 10°/100' |
| 6617.00† | 4.534 | 180.627 | 6599.35 | -225.93 | 226.29 | -31.99 | 40°05'14.734"N | 104°41'46.278"W | 10.00 | |
| 6717.00† | 14.534 | 180.627 | 6697.84 | -209.39 | 209.75 | -32.17 | 40°05'14.571"N | 104°41'46.280"W | 10.00 | |
| 6817.00† | 24.534 | 180.627 | 6791.97 | -175.99 | 176.36 | -32.54 | 40°05'14.241"N | 104°41'46.285"W | 10.00 | |
| 6917.00† | 34.534 | 180.627 | 6878.86 | -126.76 | 127.13 | -33.08 | 40°05'13.754"N | 104°41'46.292"W | 10.00 | |
| 7017.00† | 44.534 | 180.627 | 6955.89 | -63.19 | 63.56 | -33.78 | 40°05'13.126"N | 104°41'46.301"W | 10.00 | |
| 7097.29† | 52.564 | 180.627 | 7009.00 | -3.06 | 3.43 | -34.43 | 40°05'12.532"N | 104°41'46.309"W | 10.00 | SHARON SPRINGS |
| 7117.00† | 54.534 | 180.627 | 7020.71 | 12.79 | -12.42 | -34.61 | 40°05'12.375"N | 104°41'46.311"W | 10.00 | |
| 7217.00† | 64.534 | 180.627 | 7071.35 | 98.88 | -98.49 | -35.55 | 40°05'11.525"N | 104°41'46.323"W | 10.00 | |
| 7253.56† | 68.190 | 180.627 | 7086.00 | 132.36 | -131.98 | -35.92 | 40°05'11.194"N | 104°41'46.328"W | 10.00 | NIOBRARA A |
| 7291.75† | 72.009 | 180.627 | 7099.00 | 168.27 | -167.88 | -36.31 | 40°05'10.839"N | 104°41'46.333"W | 10.00 | NIOBRARA B |
| 7317.00† | 74.534 | 180.627 | 7106.27 | 192.45 | -192.06 | -36.57 | 40°05'10.600"N | 104°41'46.337"W | 10.00 | |
| 7417.00† | 84.534 | 180.627 | 7124.41 | 290.66 | -290.26 | -37.65 | 40°05'09.630"N | 104°41'46.350"W | 10.00 | |
| 7475.69 | 90.403 | 180.627 | 7127.00 | 349.26 | -348.87 | -38.29 | 40°05'09.050"N | 104°41'46.359"W | 10.00 | LANDING POINT |
| 7517.00† | 90.403 | 180.627 | 7126.71 | 390.57 | -390.17 | -38.74 | 40°05'08.642"N | 104°41'46.364"W | 0.00 | |



Planned Wellpath Report

ZIEMER 34N-5HZ (PERMIT REV-1) PWP

Page 4 of 6



| REFERENCE WELLPATH IDENTIFICATION | | | |
|-----------------------------------|---------------------------------|----------|--|
| Operator | KERR-MCGEE OIL & GAS ONSHORE LP | Slot | SLOT#04 ZIEMER 34N-5HZ (286'FNL & 287'FWL, SEC.05) |
| Area | COLORADO | Well | ZIEMER 34N-5HZ |
| Field | WELD COUNTY (KERR MCGEE) | Wellbore | ZIEMER 34N-5HZ PWB |
| Facility | SEC.05-T1N-R65W | | |

| WELLPATH DATA (131 stations) † = interpolated/extrapolated station | | | | | | | | | | |
|--|-----------------|-------------|----------------------|----------------|------------|-----------|----------------|-----------------|---------------|-------------|
| MD [ft] | Inclination [°] | Azimuth [°] | TVD [ft] | Vert Sect [ft] | North [ft] | East [ft] | Latitude | Longitude | DLS [°/100ft] | Comments |
| 7617.00† | 90.403 | 180.627 | 7126.01 | 490.57 | -490.17 | -39.84 | 40°05'07.654"N | 104°41'46.379"W | 0.00 | |
| 7717.00† | 90.403 | 180.627 | 7125.30 | 590.57 | -590.16 | -40.93 | 40°05'06.666"N | 104°41'46.393"W | 0.00 | |
| 7817.00† | 90.403 | 180.627 | 7124.60 | 690.57 | -690.15 | -42.03 | 40°05'05.678"N | 104°41'46.407"W | 0.00 | |
| 7917.00† | 90.403 | 180.627 | 7123.90 | 790.56 | -790.14 | -43.12 | 40°05'04.690"N | 104°41'46.421"W | 0.00 | |
| 8017.00† | 90.403 | 180.627 | 7123.19 | 890.56 | -890.13 | -44.21 | 40°05'03.702"N | 104°41'46.435"W | 0.00 | |
| 8117.00† | 90.403 | 180.627 | 7122.49 | 990.56 | -990.12 | -45.31 | 40°05'02.713"N | 104°41'46.449"W | 0.00 | |
| 8217.00† | 90.403 | 180.627 | 7121.79 | 1090.56 | -1090.11 | -46.40 | 40°05'01.725"N | 104°41'46.463"W | 0.00 | |
| 8317.00† | 90.403 | 180.627 | 7121.08 | 1190.55 | -1190.11 | -47.50 | 40°05'00.737"N | 104°41'46.477"W | 0.00 | |
| 8417.00† | 90.403 | 180.627 | 7120.38 | 1290.55 | -1290.10 | -48.59 | 40°04'59.749"N | 104°41'46.491"W | 0.00 | |
| 8517.00† | 90.403 | 180.627 | 7119.68 | 1390.55 | -1390.09 | -49.69 | 40°04'58.761"N | 104°41'46.505"W | 0.00 | |
| 8617.00† | 90.403 | 180.627 | 7118.97 | 1490.55 | -1490.08 | -50.78 | 40°04'57.773"N | 104°41'46.519"W | 0.00 | |
| 8717.00† | 90.403 | 180.627 | 7118.27 | 1590.54 | -1590.07 | -51.88 | 40°04'56.785"N | 104°41'46.533"W | 0.00 | |
| 8817.00† | 90.403 | 180.627 | 7117.57 | 1690.54 | -1690.06 | -52.97 | 40°04'55.796"N | 104°41'46.547"W | 0.00 | |
| 8917.00† | 90.403 | 180.627 | 7116.86 | 1790.54 | -1790.06 | -54.06 | 40°04'54.808"N | 104°41'46.562"W | 0.00 | |
| 9017.00† | 90.403 | 180.627 | 7116.16 | 1890.54 | -1890.05 | -55.16 | 40°04'53.820"N | 104°41'46.576"W | 0.00 | |
| 9117.00† | 90.403 | 180.627 | 7115.46 | 1990.53 | -1990.04 | -56.25 | 40°04'52.832"N | 104°41'46.590"W | 0.00 | |
| 9217.00† | 90.403 | 180.627 | 7114.76 | 2090.53 | -2090.03 | -57.35 | 40°04'51.844"N | 104°41'46.604"W | 0.00 | |
| 9317.00† | 90.403 | 180.627 | 7114.05 | 2190.53 | -2190.02 | -58.44 | 40°04'50.856"N | 104°41'46.618"W | 0.00 | |
| 9417.00† | 90.403 | 180.627 | 7113.35 | 2290.53 | -2290.01 | -59.54 | 40°04'49.868"N | 104°41'46.632"W | 0.00 | |
| 9517.00† | 90.403 | 180.627 | 7112.65 | 2390.52 | -2390.00 | -60.63 | 40°04'48.880"N | 104°41'46.646"W | 0.00 | |
| 9617.00† | 90.403 | 180.627 | 7111.94 | 2490.52 | -2490.00 | -61.73 | 40°04'47.891"N | 104°41'46.660"W | 0.00 | |
| 9717.00† | 90.403 | 180.627 | 7111.24 | 2590.52 | -2589.99 | -62.82 | 40°04'46.903"N | 104°41'46.674"W | 0.00 | |
| 9817.00† | 90.403 | 180.627 | 7110.54 | 2690.52 | -2689.98 | -63.91 | 40°04'45.915"N | 104°41'46.688"W | 0.00 | |
| 9917.00† | 90.403 | 180.627 | 7109.83 | 2790.52 | -2789.97 | -65.01 | 40°04'44.927"N | 104°41'46.702"W | 0.00 | |
| 10017.00† | 90.403 | 180.627 | 7109.13 | 2890.51 | -2889.96 | -66.10 | 40°04'43.939"N | 104°41'46.716"W | 0.00 | |
| 10117.00† | 90.403 | 180.627 | 7108.43 | 2990.51 | -2989.95 | -67.20 | 40°04'42.951"N | 104°41'46.730"W | 0.00 | |
| 10217.00† | 90.403 | 180.627 | 7107.72 | 3090.51 | -3089.95 | -68.29 | 40°04'41.963"N | 104°41'46.745"W | 0.00 | |
| 10317.00† | 90.403 | 180.627 | 7107.02 | 3190.51 | -3189.94 | -69.39 | 40°04'40.974"N | 104°41'46.759"W | 0.00 | |
| 10417.00† | 90.403 | 180.627 | 7106.32 | 3290.50 | -3289.93 | -70.48 | 40°04'39.986"N | 104°41'46.773"W | 0.00 | |
| 10517.00† | 90.403 | 180.627 | 7105.61 | 3390.50 | -3389.92 | -71.58 | 40°04'38.998"N | 104°41'46.787"W | 0.00 | |
| 10617.00† | 90.403 | 180.627 | 7104.91 | 3490.50 | -3489.91 | -72.67 | 40°04'38.010"N | 104°41'46.801"W | 0.00 | |
| 10717.00† | 90.403 | 180.627 | 7104.21 | 3590.50 | -3589.90 | -73.77 | 40°04'37.022"N | 104°41'46.815"W | 0.00 | |
| 10817.00† | 90.403 | 180.627 | 7103.51 | 3690.49 | -3689.89 | -74.86 | 40°04'36.034"N | 104°41'46.829"W | 0.00 | |
| 10917.00† | 90.403 | 180.627 | 7102.80 | 3790.49 | -3789.89 | -75.95 | 40°04'35.046"N | 104°41'46.843"W | 0.00 | |
| 11017.00† | 90.403 | 180.627 | 7102.10 | 3890.49 | -3889.88 | -77.05 | 40°04'34.058"N | 104°41'46.857"W | 0.00 | |
| 11117.00† | 90.403 | 180.627 | 7101.40 | 3990.49 | -3989.87 | -78.14 | 40°04'33.069"N | 104°41'46.871"W | 0.00 | |
| 11217.00† | 90.403 | 180.627 | 7100.69 | 4090.48 | -4089.86 | -79.24 | 40°04'32.081"N | 104°41'46.885"W | 0.00 | |
| 11317.00† | 90.403 | 180.627 | 7099.99 | 4190.48 | -4189.85 | -80.33 | 40°04'31.093"N | 104°41'46.899"W | 0.00 | |
| 11417.00† | 90.403 | 180.627 | 7099.29 | 4290.48 | -4289.84 | -81.43 | 40°04'30.105"N | 104°41'46.913"W | 0.00 | |
| 11517.00† | 90.403 | 180.627 | 7098.58 | 4390.48 | -4389.84 | -82.52 | 40°04'29.117"N | 104°41'46.928"W | 0.00 | |
| 11599.95 | 90.403 | 180.627 | 7098.00 ¹ | 4473.42 | -4472.78 | -83.43 | 40°04'28.297"N | 104°41'46.939"W | 0.00 | TOTAL DEPTH |



Planned Wellpath Report

ZIEMER 34N-5HZ (PERMIT REV-1) PWP

Page 5 of 6



REFERENCE WELLPATH IDENTIFICATION

| | | | |
|----------|---------------------------------|----------|--|
| Operator | KERR-MCGEE OIL & GAS ONSHORE LP | Slot | SLOT#04 ZIEMER 34N-5HZ (286'FNL & 287'FWL, SEC.05) |
| Area | COLORADO | Well | ZIEMER 34N-5HZ |
| Field | WELD COUNTY (KERR MCGEE) | Wellbore | ZIEMER 34N-5HZ PWB |
| Facility | SEC.05-T1N-R65W | | |

HOLE & CASING SECTIONS - Ref Wellbore: ZIEMER 34N-5HZ PWB Ref Wellpath: ZIEMER 34N-5HZ (PERMIT REV-1) PWP

| String/Diameter | Start MD [ft] | End MD [ft] | Interval [ft] | Start TVD [ft] | End TVD [ft] | Start N/S [ft] | Start E/W [ft] | End N/S [ft] | End E/W [ft] |
|-------------------------|---------------|-------------|---------------|----------------|--------------|----------------|----------------|--------------|--------------|
| 13.5in Open Hole | 17.00 | 1091.00 | 1074.00 | 17.00 | 1091.00 | 0.00 | 0.00 | 0.00 | 0.00 |
| 9.625in Casing Surface | 17.00 | 1091.00 | 1074.00 | 17.00 | 1091.00 | 0.00 | 0.00 | 0.00 | 0.00 |
| 8.75in Open Hole | 1091.00 | 7475.69 | 6384.69 | 1091.00 | 7127.00 | 0.00 | 0.00 | -348.87 | -38.29 |
| 7in Casing Intermediate | 17.00 | 7475.69 | 7458.69 | 17.00 | 7127.00 | 0.00 | 0.00 | -348.87 | -38.29 |
| 6.125in Open Hole | 7475.69 | 11599.95 | 4124.26 | 7127.00 | 7098.00 | -348.87 | -38.29 | -4472.78 | -83.43 |
| 4.5in Casing Production | 17.00 | 11599.95 | 11582.95 | 17.00 | 7098.00 | 0.00 | 0.00 | -4472.78 | -83.43 |

TARGETS

| Name | MD [ft] | TVD [ft] | North [ft] | East [ft] | Grid East [US ft] | Grid North [US ft] | Latitude | Longitude | Shape |
|---|----------|----------|------------|-----------|-------------------|--------------------|----------------|-----------------|---------|
| BOYD PAD HARDLINES LINES (460' SETBACKS SEC.05) | | 4974.00 | -4556.45 | 2585.05 | 3227559.17 | 1270954.76 | 40°04'27.469"N | 104°41'12.613"W | polygon |
| BOYD PAD SECTION LINES (SEC.05) | | 4974.00 | -4556.45 | 2585.05 | 3227559.17 | 1270954.76 | 40°04'27.469"N | 104°41'12.613"W | polygon |
| 1) ZIEMER 34N-5HZ BHL ON PLAT REV-1 (460'FSL & 250'FWL, SEC.05) | 11599.95 | 7098.00 | -4472.78 | -83.43 | 3224890.16 | 1271014.23 | 40°04'28.297"N | 104°41'46.939"W | point |

SURVEY PROGRAM - Ref Wellbore: ZIEMER 34N-5HZ PWB Ref Wellpath: ZIEMER 34N-5HZ (PERMIT REV-1) PWP

| Start MD [ft] | End MD [ft] | Positional Uncertainty Model | Log Name/Comment | Wellbore |
|---------------|-------------|------------------------------|------------------|--------------------|
| 17.00 | 7475.69 | NaviTrak (Standard) | | ZIEMER 34N-5HZ PWB |
| 7475.69 | 11599.95 | OnTrak (Standard) | | ZIEMER 34N-5HZ PWB |



Planned Wellpath Report

ZIEMER 34N-5HZ (PERMIT REV-1) PWP

Page 6 of 6



| REFERENCE WELLPATH IDENTIFICATION | | | |
|-----------------------------------|---------------------------------|----------|--|
| Operator | KERR-MCGEE OIL & GAS ONSHORE LP | Slot | SLOT#04 ZIEMER 34N-5HZ (286'FNL & 287'FWL, SEC.05) |
| Area | COLORADO | Well | ZIEMER 34N-5HZ |
| Field | WELD COUNTY (KERR MCGEE) | Wellbore | ZIEMER 34N-5HZ PWB |
| Facility | SEC.05-T1N-R65W | | |

| WELLPATH COMMENTS | | | | | |
|-------------------|--------------------|----------------|-------------|------------------|--|
| MD [ft] | Inclination [°] | Azimuth [°] | TVD [ft] | Comment | |
| 1041.00 | 0.000 | 352.020 | 1041.00 | FOX HILLS BASE | |
| 3983.60 | 0.000 | 180.627 | 3966.00 | PARKMAN | |
| 4512.60 | 0.000 | 180.627 | 4495.00 | SUSSEX | |
| 6471.66 | 0.000 | 180.627 | 6454.06 | 4 1/2" LINER TOP | |
| 7097.29 | 52.564 | 180.627 | 7009.00 | SHARON SPRINGS | |
| 7253.56 | 68.190 | 180.627 | 7086.00 | NIOBRARA A | |
| 7291.75 | 72.009 | 180.627 | 7099.00 | NIOBRARA B | |