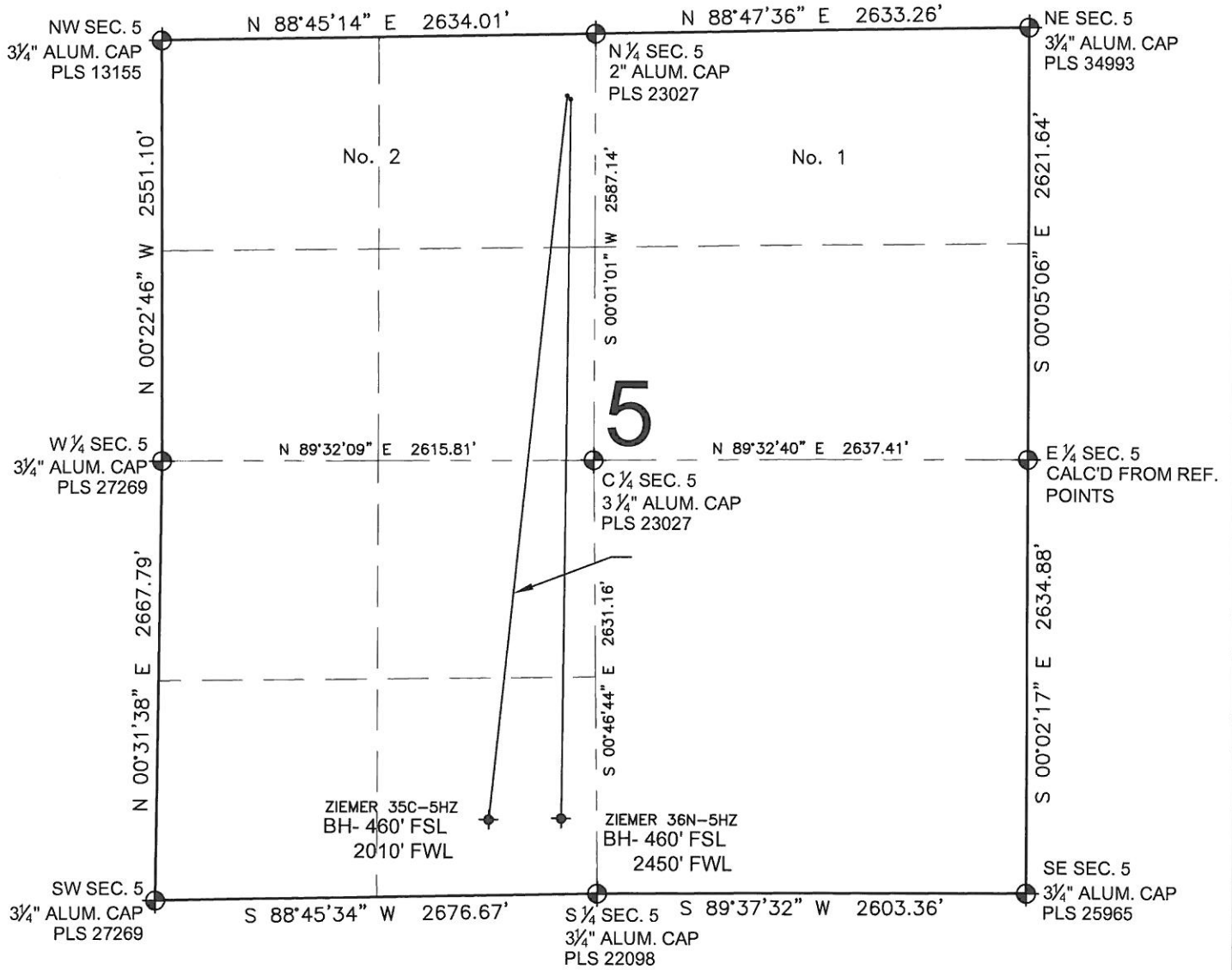


ZIEMER 35C-5HZ MULTI-WELL PLAN

SECTION 5, TOWNSHIP 1 NORTH, RANGE 65 WEST, 6TH P.M.



NOTES:

ZIEMER 35C-5HZ TO BE AT 372' FNL, 2459' FWL.
 BOTTOM HOLE AT 460' FSL & 2010' FWL,
 ZIEMER 36N-5HZ TO BE AT 393' FNL, 2480' FWL.
 BOTTOM HOLE AT 460' FSL & 2450' FWL,

LEGEND

- ⊕ = EXISTING MONUMENT
- = PROPOSED WELL
- ◆ = BOTTOM HOLE
- ◆ = EXISTING WELL
- BH= BOTTOM HOLE

PREPARED BY:



KERR-MCGEE OIL & GAS ONSHORE LP

FIELD DATE:
01-23-13

DRAWING DATE:
04-24-13

SURFACE LOCATION:

NE 1/4 NW 1/4, SEC. 5, T1N, R65W, 6TH P.M.
 WELD COUNTY, COLORADO

