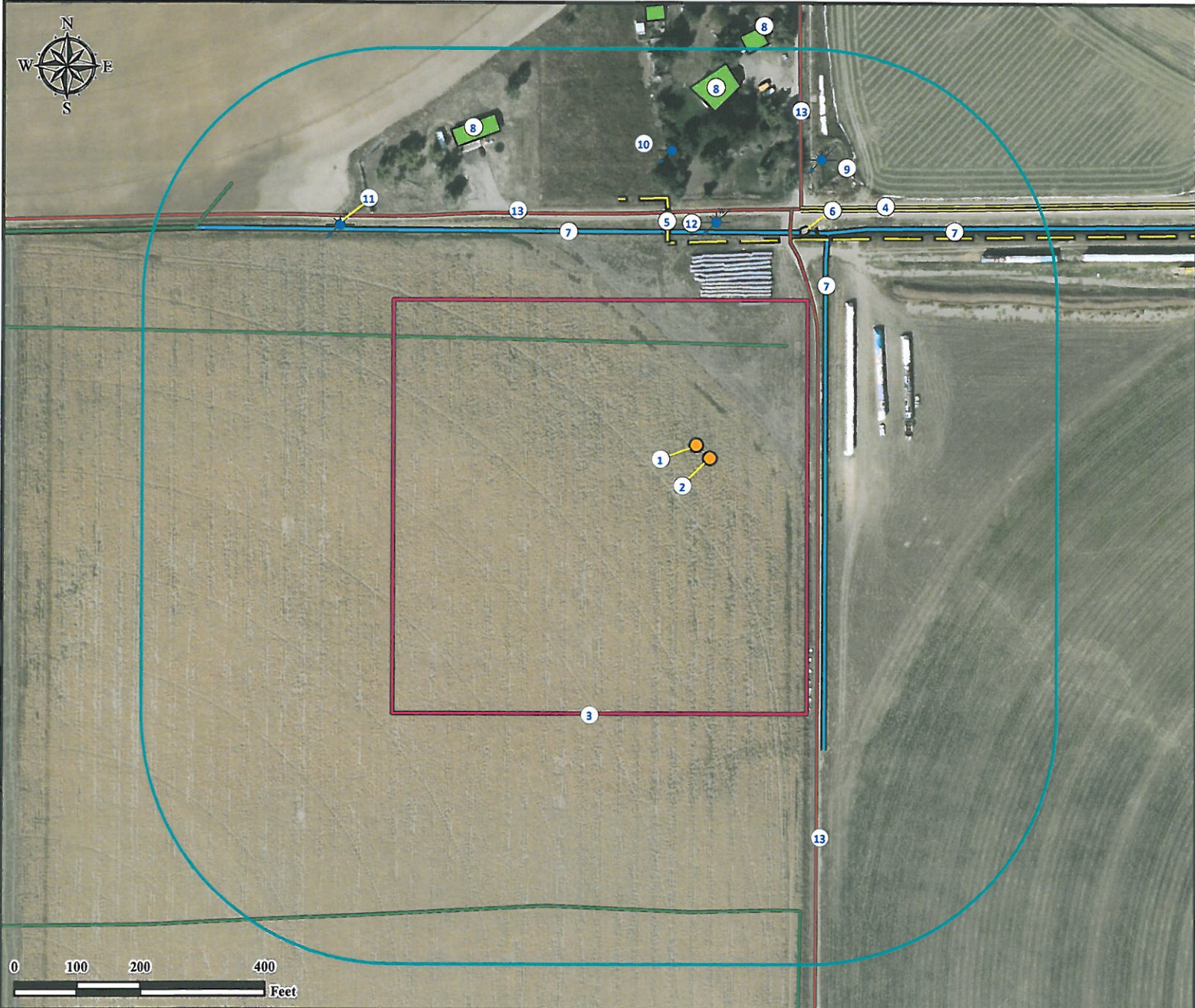


Location Drawing

ZIEMER 35C-5HZ

Multi Well Pad

NE¼ NW¼ SECTION 5, TOWNSHIP 1 NORTH, RANGE 65 WEST OF THE 6TH PRINCIPAL MERIDIAN



- | | | |
|----------------------------------|--|--|
| 1. Proposed Well ZIEMER 35C-5HZ. | 6. Concrete Water Facilities is ±373' NE. | 11. Water Well (#98126, Well Constructed) is ±498' NE. |
| 2. Proposed Well ZIEMER 36N-5HZ | 7. Ditches are ±205' E and ±340' N. | 12. Water Well (#1249, Permit Issued) is ±669' NW.
Feature not in this location per field verify. |
| 3. Operational Disturbance Area. | 8. Buildings are ±533' NE, ±592' NW, and ±629' NE. | 13. Private Roads are ±192' E, ±373' N, and ±411' NE. |
| 4. County Road 14 is ±411' NE. | 9. Water Well (#1248, Well Constructed) is ±358' NE. | |
| 5. Powerline is ±324' N. | 10. Water Well (#66987, Well Constructed) is ±473' NW. | |

Legend			
● Proposed Well	□ 400' Radius	— Ditch	— Private Road
⚡ Water Well	■ Building	= Public Road	— Pipeline
□ Disturbance Area	■ Concrete Water Facility	— Powerline	

Reference Location

** All Measurements are Made from Reference Well ZIEMER 35C-5HZ*

Lat: 40.086644° Long:-104.688314° (NAD83)
Elevation: 4946 Feet

Surface Use: Irrigated Crop

Use our resources to find yours!
www.petro-fs.com
 (303) 928-7128

Field Date: 01/23/2013
 Drafting Date: 04/25/2013
 Drafter: CPO
 Revision: 2

Data Sources:

- Aerial courtesy of Anadarko Petroleum Corporation (2010)
- Water wells courtesy of CDWR

Prepared for: Petroleum Corporation

KERR-MCGEE OIL & GAS ONSHORE LP