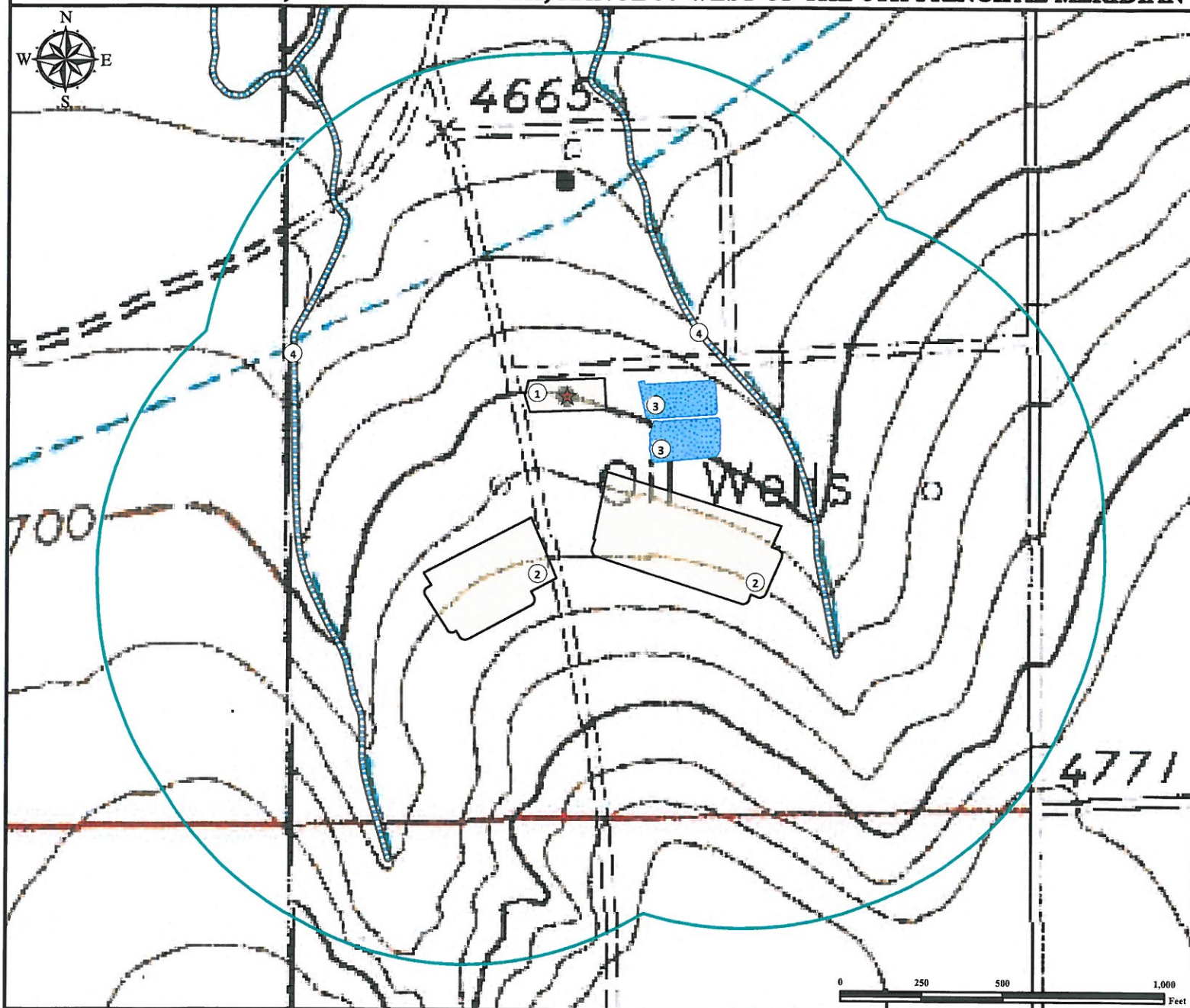


# Hydrology Map

## BADGER CREEK 22-N FACILITY

SE¼ SE¼ SECTION 22, TOWNSHIP 2 SOUTH, RANGE 57 WEST OF THE 6TH PRINCIPAL MERIDIAN



1. Proposed BADGER CREEK 22-N Facility.
2. Proposed BADGER CREEK 22-N Evaporation Ponds are  $\pm 265'$  SE and  $\pm 391'$  SW.

3. Existing Evaporation Ponds are  $\pm 224'$  E and  $\pm 280'$  SE.
4. Streams are  $\pm 448'$  NE and  $\pm 937'$  SW.

### Legend

- ★ Reference Point
- 1000' Radius
- Intermittent Stream
- Proposed Facility
- Evaporation Ponds

### Reference Location

\*\* All measurements are made from  
★ Reference Point \*\*

Lat: 39.859970° Long: -103.747455° (NAD83)  
Elevation: 4713 Feet



Use our resources to find yours!  
[www.petro-fs.com](http://www.petro-fs.com)  
(303) 928-7128

Field Date: 05/21/2013  
Drafting Date: 06/20/2013  
Drafter: CPO  
Revision: 2

Data Sources:  
- TOPO courtesy USGS  
- Intermittent Streams courtesy of NHD

Prepared for:

BAYSWATER  
EXPLORATION AND PRODUCTION, LLC