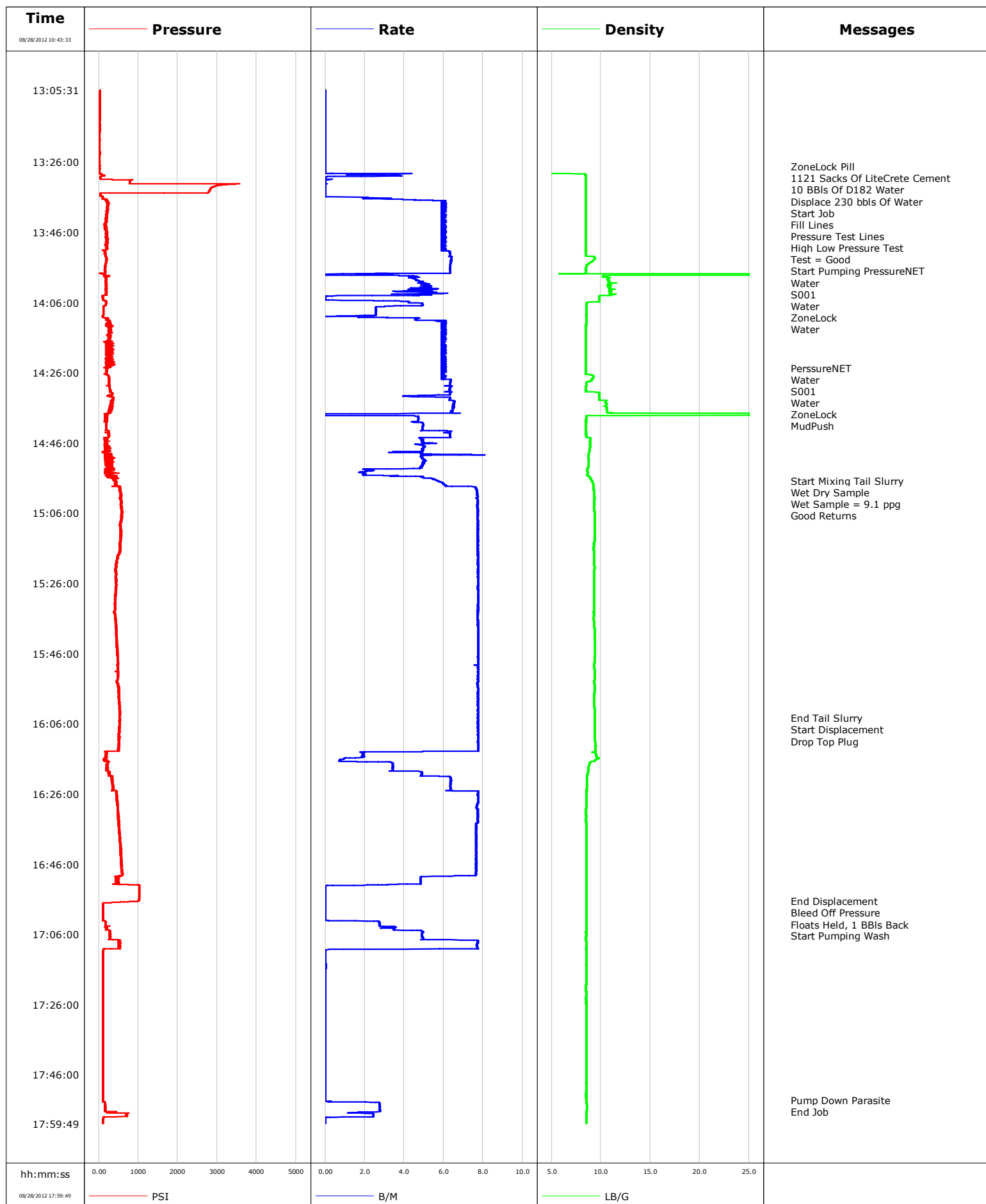


Well SG 8504B-36 D36 496
Field Story Gulch
Engineer Rogers / Fairbrook
Country United States

Client Encana
SIR No. C610-00558
Job Type Surface
Job Date 08-28-2012

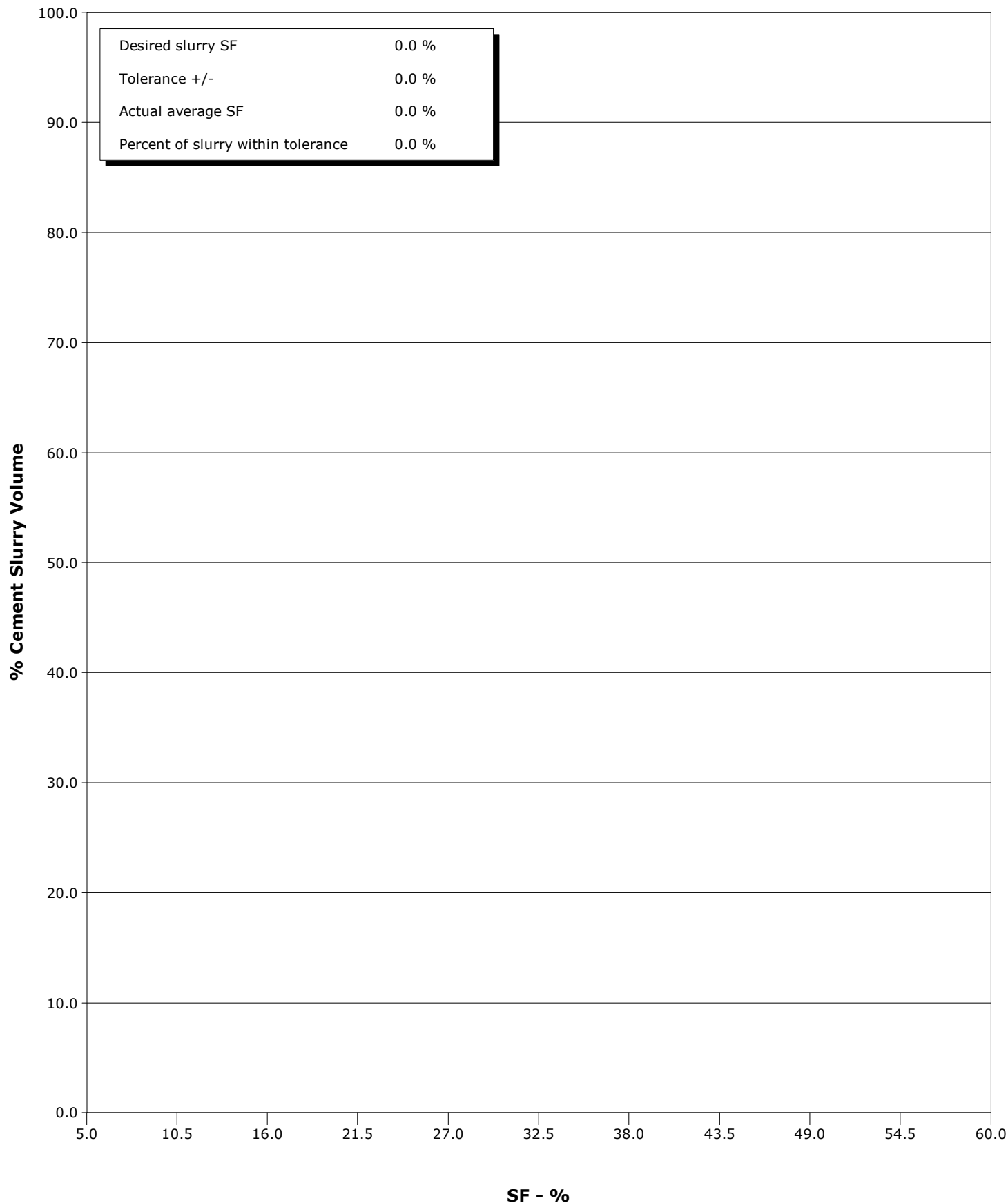


Schlumberger Cementing Qa/Qc SFM Report

Well SG 8504B-36 D36 496
Field Story Gulch
Engineer Rogers / Fairbrook
Country United States

Client Encana
SIR No. C610-00558
Job Type Surface
Job Date 08-28-2012

Cement Slurry - 08/28/2012 15:29:12 to 08/28/2012 15:51:42





Cementing Service Report

| | | | | | | | | | | | | | | | |
|--|------------------------|---|---------------------|-------------------------------------|--------------------|---------------------------|-----------------------|--------------------------|---------|--------------------------|----------------------|---------------|--|----------------|--|
| | | | | | Customer Encana | | | Job Number C610-00558 | | | | | | | |
| Well SG 8504B-36 D36 496 | | | | Location (legal) | | | Schlumberger Location | | | Job Start Aug/28/2012 | | | | | |
| Field Story Gulch | | Formation Name/Type Dirty-Sandstone | | | Deviation | | Bit Size | | Well MD | | Well TVD | | | | |
| County Garfield | | State/Province Colorado | | | BHP | | BHST | | BHCT | | Pore Press. Gradient | | | | |
| Well Master | | API/UWI | | | | | | | | | | | | | |
| Rig Name Patterson 306 | | Drilled For Gas | | Service Via | | Casing/Liner | | | | | | | | | |
| Offshore Zone | | Well Class New | | Well Type Development | | Depth, ft | | Size, in | | Weight, lb/ft | | Grade | | Thread | |
| | | | | | | 3018.0 | | 9.630 | | 36.0 | | K55 | | 8RD | |
| | | | | | | 0.0 | | 0.000 | | 0.0 | | | | | |
| Drilling Fluid Type | | Max. Density | | Plastic Viscosity | | Tubing/Drill Pipe | | | | | | | | | |
| | | | | | | Depth, | | Size, | | Weight, | | Grade | | Thread | |
| Service Line Cementing | | Job Type Surface | | | | | | | | | | | | | |
| Max. Allowed Tub. Press | | Max. Allowed Ann. Press | | WH Connection Single Cement head | | Perforations/Open Hole | | | | | | | | | |
| | | | | | | Top, | | Bottom, | | | | No. of Shots | | Total Interval | |
| Service Instructions | | | | | | | | | | | | | | Diameter | |
| | | | | | | | | | | | | | | | |
| | | | | | | | | | | | | | | | |
| | | | | | | Treat Down | | Displacement | | Packer Type | | Packer Depth | | | |
| | | | | | | Tubing Vol. | | Casing Vol. | | Annular Vol. | | Openhole Vol. | | | |
| Casing/Tubing Secured <input type="checkbox"/> | | 1 Hole Vol. Circulated prior to Cement <input type="checkbox"/> | | | | Casing Tools | | | | Squeeze Job | | | | | |
| Lift Pressure | | | | | | Shoe Type Float | | | | Squeeze Type | | | | | |
| Pipe Rotated <input type="checkbox"/> | | Pipe Reciprocated <input type="checkbox"/> | | | | Shoe Depth 3018.0 ft | | | | Tool Type | | | | | |
| No. Centralizers | | Top Plugs 1 | | Bottom Plugs | | Stage Tool Type | | | | Tool Depth | | | | | |
| Cement Head Type Single | | | | | | Stage Tool Depth | | | | Tail Pipe Size | | | | | |
| Job Scheduled For Aug/28/2012 | | Arrived on Location Aug/28/2012 | | Leave Location Aug/28/2012 | | Collar Type Float | | | | Tail Pipe Depth | | | | | |
| | | | | | | Collar Depth 2845.0 ft | | | | Sqz. Total Vol. | | | | | |
| Date | Time 24-hr clock | Treating Pressure PSI | Flow Rate B/M | Density LB/G | Volume BBL | SF NULL | Message | | | | | | | | |
| 08/28/2012 | 00:00:00 | | | | | | Water | | | | | | | | |
| 08/28/2012 | 00:00:00 | | | | | | Water | | | | | | | | |
| 08/28/2012 | 00:00:00 | | | | | | S001 | | | | | | | | |
| 08/28/2012 | 10:43:33 | 73 | 2.6 | 8.47 | 0.0 | 8 | | | | | | | | | |
| 08/28/2012 | 10:45:00 | 72 | 2.6 | 8.47 | 3.7 | 13 | | | | | | | | | |
| 08/28/2012 | 10:50:00 | 26 | 0.0 | 8.47 | 7.1 | 0 | | | | | | | | | |
| 08/28/2012 | 10:55:00 | 26 | 0.0 | 8.47 | 7.2 | 0 | | | | | | | | | |
| 08/28/2012 | 11:00:00 | 27 | 0.0 | 8.46 | 7.3 | 0 | | | | | | | | | |
| 08/28/2012 | 11:05:00 | 27 | 0.0 | 8.44 | 7.3 | 0 | | | | | | | | | |
| 08/28/2012 | 11:10:00 | 24 | 0.0 | 0.48 | 7.3 | 0 | | | | | | | | | |
| 08/28/2012 | 11:15:00 | 24 | 0.0 | 0.46 | 0.0 | 0 | | | | | | | | | |
| 08/28/2012 | 11:20:00 | 24 | 25.0 | 1.83 | 78.3 | 0 | | | | | | | | | |
| 08/28/2012 | 11:25:00 | 24 | 0.0 | 0.44 | 183.8 | 0 | | | | | | | | | |
| 08/28/2012 | 11:30:00 | 25 | 0.0 | 0.43 | 183.8 | 0 | | | | | | | | | |
| 08/28/2012 | 11:35:00 | 25 | 0.0 | 0.42 | 183.8 | 0 | | | | | | | | | |
| 08/28/2012 | 11:40:00 | 25 | 0.0 | 0.42 | 183.8 | 0 | | | | | | | | | |
| 08/28/2012 | 11:45:00 | 24 | 0.0 | 0.42 | 183.8 | 0 | | | | | | | | | |
| 08/28/2012 | 11:50:00 | 24 | 0.0 | 0.42 | 183.8 | 0 | | | | | | | | | |
| 08/28/2012 | 11:55:00 | 24 | 0.0 | 0.42 | 183.8 | 0 | | | | | | | | | |
| 08/28/2012 | 12:00:00 | 23 | 0.0 | 0.42 | 183.8 | 0 | | | | | | | | | |
| 08/28/2012 | 12:05:00 | 23 | 0.0 | 0.42 | 183.8 | 0 | | | | | | | | | |

| Well SG 8504B-36 D36 496 | | | Field Story Gulch | | Job Start Aug/28/2012 | | Customer Encana | Job Number C610-00558 |
|-----------------------------|------------------------|-----------------------------|----------------------|-----------------|--------------------------|------------|--------------------------------|--------------------------|
| Date | Time 24-hr clock | Treating Pressure PSI | Flow Rate B/M | Density LB/G | Volume BBL | SF NULL | Message | |
| 08/28/2012 | 12:15:00 | 24 | 0.0 | 0.42 | 183.8 | 0 | | |
| 08/28/2012 | 12:20:00 | 24 | 0.0 | 0.42 | 183.8 | 0 | | |
| 08/28/2012 | 12:25:00 | 25 | 0.0 | 0.42 | 183.8 | 0 | | |
| 08/28/2012 | 12:30:00 | 25 | 0.0 | 0.42 | 183.8 | 0 | | |
| 08/28/2012 | 12:35:00 | 24 | 0.0 | 0.42 | 183.8 | 0 | | |
| 08/28/2012 | 12:40:00 | 25 | 0.0 | 0.43 | 183.8 | 0 | | |
| 08/28/2012 | 12:45:00 | 25 | 0.0 | 0.43 | 183.8 | 0 | | |
| 08/28/2012 | 12:50:00 | 24 | 0.0 | 0.43 | 183.8 | 0 | | |
| 08/28/2012 | 12:55:00 | 25 | 0.0 | 0.43 | 183.8 | 0 | | |
| 08/28/2012 | 13:00:00 | 25 | 0.0 | 0.43 | 183.8 | 0 | | |
| 08/28/2012 | 13:05:00 | 25 | 0.0 | 0.43 | 183.8 | 0 | | |
| 08/28/2012 | 13:10:00 | 25 | 0.0 | 0.43 | 183.8 | 0 | | |
| 08/28/2012 | 13:15:00 | 24 | 0.0 | 0.43 | 183.8 | 0 | | |
| 08/28/2012 | 13:20:00 | 24 | 0.0 | 0.43 | 183.8 | 0 | | |
| 08/28/2012 | 13:25:00 | 24 | 0.0 | 0.43 | 183.8 | 0 | | |
| 08/28/2012 | 13:27:15 | | | | | | ZoneLock Pill | |
| 08/28/2012 | 13:27:15 | | | | | | 1121 Sacks Of LiteCrete Cement | |
| 08/28/2012 | 13:27:15 | | | | | | 10 BBLs Of D182 Water | |
| 08/28/2012 | 13:27:15 | 24 | 0.0 | 0.43 | 183.8 | 0 | | |
| 08/28/2012 | 13:27:18 | | | | | | Displace 230 bbls Of Water | |
| 08/28/2012 | 13:27:18 | 25 | 0.0 | 0.43 | 183.8 | 0 | | |
| 08/28/2012 | 13:27:23 | | | | | | Start Job | |
| 08/28/2012 | 13:27:23 | 24 | 0.0 | 0.43 | 183.8 | 0 | | |
| 08/28/2012 | 13:27:24 | | | | | | Fill Lines | |
| 08/28/2012 | 13:27:24 | 24 | 0.0 | 0.43 | 183.8 | 0 | | |
| 08/28/2012 | 13:27:27 | | | | | | Pressure Test Lines | |
| 08/28/2012 | 13:27:27 | 24 | 0.0 | 0.43 | 183.8 | 0 | | |
| 08/28/2012 | 13:30:00 | 116 | 3.9 | 8.44 | 1.9 | 0 | | |
| 08/28/2012 | 13:35:00 | 41 | 0.0 | 8.46 | 2.4 | 0 | | |
| 08/28/2012 | 13:37:06 | | | | | | High Low Pressure Test | |
| 08/28/2012 | 13:37:06 | 223 | 6.0 | 8.46 | 6.2 | 0 | | |
| 08/28/2012 | 13:37:07 | | | | | | Test = Good | |
| 08/28/2012 | 13:37:07 | 214 | 6.0 | 8.46 | 6.3 | 0 | | |
| 08/28/2012 | 13:38:03 | | | | | | Start Pumping PressureNET | |
| 08/28/2012 | 13:38:03 | 227 | 5.9 | 8.46 | 11.8 | 0 | | |
| 08/28/2012 | 13:40:00 | 193 | 6.0 | 8.46 | 23.5 | 0 | | |
| 08/28/2012 | 13:45:00 | 152 | 5.9 | 8.46 | 53.4 | 0 | | |
| 08/28/2012 | 13:50:00 | 196 | 5.9 | 8.45 | 83.3 | 0 | | |
| 08/28/2012 | 13:51:05 | | | | | | Water | |
| 08/28/2012 | 13:51:05 | 108 | 6.1 | 8.48 | 89.7 | 0 | | |
| 08/28/2012 | 13:55:00 | 184 | 6.3 | 8.75 | 114.5 | 0 | | |
| 08/28/2012 | 13:55:58 | | | | | | S001 | |
| 08/28/2012 | 13:55:58 | 155 | 6.3 | 8.49 | 120.6 | 0 | | |
| 08/28/2012 | 13:57:44 | | | | | | Water | |
| 08/28/2012 | 13:57:44 | 70 | 3.0 | 8.48 | 131.8 | 0 | | |
| 08/28/2012 | 14:00:00 | 189 | 4.8 | 10.86 | 139.9 | 0 | | |
| 08/28/2012 | 14:05:00 | 98 | 0.0 | 9.84 | 160.1 | 0 | | |
| 08/28/2012 | 14:06:23 | | | | | | ZoneLock | |
| 08/28/2012 | 14:06:23 | 195 | 4.9 | 8.49 | 164.1 | 0 | | |
| 08/28/2012 | 14:09:56 | | | | | | Water | |
| 08/28/2012 | 14:09:56 | 98 | 0.4 | 8.48 | 174.5 | 0 | | |
| 08/28/2012 | 14:10:00 | 98 | 0.1 | 8.48 | 174.5 | 0 | | |
| 08/28/2012 | 14:15:00 | 270 | 5.9 | 8.48 | 201.9 | 0 | | |
| 08/28/2012 | 14:20:00 | 197 | 5.9 | 8.46 | 231.8 | 0 | | |

| Well SG 8504B-36 D36 496 | | | Field Story Gulch | | Job Start Aug/28/2012 | | Customer Encana | Job Number C610-00558 |
|-----------------------------|------------------------|-----------------------------|----------------------|-----------------|--------------------------|------------|--------------------------|--------------------------|
| Date | Time 24-hr clock | Treating Pressure PSI | Flow Rate B/M | Density LB/G | Volume BBL | SF NULL | Message | |
| 08/28/2012 | 14:24:39 | 221 | 5.9 | 8.46 | 259.6 | 0 | | |
| 08/28/2012 | 14:25:00 | 206 | 6.0 | 8.46 | 261.7 | 0 | | |
| 08/28/2012 | 14:26:28 | | | | | | Water | |
| 08/28/2012 | 14:26:28 | 145 | 6.0 | 8.55 | 270.5 | 0 | | |
| 08/28/2012 | 14:29:41 | | | | | | S001 | |
| 08/28/2012 | 14:29:41 | 264 | 6.3 | 8.48 | 290.3 | 0 | | |
| 08/28/2012 | 14:30:00 | 261 | 6.3 | 8.48 | 292.3 | 0 | | |
| 08/28/2012 | 14:31:31 | | | | | | Water | |
| 08/28/2012 | 14:31:31 | 299 | 6.3 | 8.58 | 301.9 | 0 | | |
| 08/28/2012 | 14:35:00 | 342 | 6.5 | 10.51 | 323.1 | 0 | | |
| 08/28/2012 | 14:37:50 | | | | | | ZoneLock | |
| 08/28/2012 | 14:37:50 | 201 | 0.0 | 25.00 | 340.3 | 0 | | |
| 08/28/2012 | 14:40:00 | 162 | 4.4 | 8.48 | 348.6 | 0 | | |
| 08/28/2012 | 14:40:58 | | | | | | MudPush | |
| 08/28/2012 | 14:40:58 | 187 | 5.0 | 8.47 | 353.3 | 0 | | |
| 08/28/2012 | 14:45:00 | 164 | 4.9 | 8.90 | 375.8 | 17 | | |
| 08/28/2012 | 14:50:00 | 344 | 4.9 | 8.70 | 400.8 | 12 | | |
| 08/28/2012 | 14:55:00 | 198 | 2.0 | 8.65 | 420.8 | 0 | | |
| 08/28/2012 | 14:56:44 | | | | | | Start Mixing Tail Slurry | |
| 08/28/2012 | 14:56:44 | 438 | 5.7 | 9.06 | 428.6 | 40 | | |
| 08/28/2012 | 14:57:59 | | | | | | Wet Dry Sample | |
| 08/28/2012 | 14:57:59 | 420 | 6.1 | 9.22 | 435.9 | 47 | | |
| 08/28/2012 | 14:58:00 | | | | | | Wet Sample = 9.1 ppg | |
| 08/28/2012 | 14:58:00 | | | | | | Good Returns | |
| 08/28/2012 | 14:58:00 | 417 | 6.1 | 9.22 | 436.0 | 47 | | |
| 08/28/2012 | 15:00:00 | 532 | 7.7 | 9.28 | 450.7 | 49 | | |
| 08/28/2012 | 15:05:00 | 576 | 7.7 | 9.31 | 489.3 | 50 | | |
| 08/28/2012 | 15:10:00 | 557 | 7.7 | 9.35 | 527.9 | 50 | | |
| 08/28/2012 | 15:15:00 | 544 | 7.7 | 9.27 | 566.5 | 48 | | |
| 08/28/2012 | 15:20:00 | 459 | 7.7 | 9.29 | 605.1 | 50 | | |
| 08/28/2012 | 15:25:00 | 425 | 7.7 | 9.29 | 643.8 | 50 | | |
| 08/28/2012 | 15:30:00 | 423 | 7.8 | 9.30 | 682.5 | 50 | | |
| 08/28/2012 | 15:35:00 | 411 | 7.7 | 9.27 | 721.2 | 48 | | |
| 08/28/2012 | 15:40:00 | 435 | 7.7 | 9.32 | 759.8 | 50 | | |
| 08/28/2012 | 15:45:00 | 472 | 7.8 | 9.39 | 798.5 | 50 | | |
| 08/28/2012 | 15:50:00 | 480 | 7.7 | 9.31 | 837.3 | 50 | | |
| 08/28/2012 | 15:55:00 | 494 | 7.7 | 9.33 | 875.9 | 48 | | |
| 08/28/2012 | 16:00:00 | 526 | 7.7 | 9.30 | 914.6 | 49 | | |
| 08/28/2012 | 16:04:21 | | | | | | End Tail Slurry | |
| 08/28/2012 | 16:04:21 | | | | | | Start Displacement | |
| 08/28/2012 | 16:04:21 | 528 | 7.7 | 9.32 | 948.2 | 49 | | |
| 08/28/2012 | 16:04:22 | | | | | | Drop Top Plug | |
| 08/28/2012 | 16:04:22 | 526 | 7.8 | 9.32 | 948.4 | 49 | | |
| 08/28/2012 | 16:05:00 | 534 | 7.7 | 9.32 | 953.3 | 49 | | |
| 08/28/2012 | 16:10:00 | 516 | 7.7 | 9.36 | 991.9 | 50 | | |
| 08/28/2012 | 16:15:00 | 167 | 1.9 | 9.52 | 1024.4 | 42 | | |
| 08/28/2012 | 16:20:00 | 268 | 4.9 | 8.66 | 1038.3 | 15 | | |
| 08/28/2012 | 16:25:00 | 373 | 6.4 | 8.53 | 1068.7 | 5 | | |
| 08/28/2012 | 16:30:00 | 482 | 7.7 | 8.49 | 1107.1 | 5 | | |
| 08/28/2012 | 16:35:00 | 502 | 7.6 | 8.49 | 1145.7 | 4 | | |
| 08/28/2012 | 16:40:00 | 529 | 7.6 | 8.49 | 1183.9 | 0 | | |
| 08/28/2012 | 16:45:00 | 555 | 7.6 | 8.49 | 1222.1 | 0 | | |
| 08/28/2012 | 16:50:00 | 490 | 4.8 | 8.49 | 1258.6 | 0 | | |
| 08/28/2012 | 16:55:00 | 1018 | 0.0 | 8.49 | 1267.7 | 0 | | |

| Well SG 8504B-36 D36 496 | | | Field Story Gulch | | Job Start Aug/28/2012 | | Customer Encana | | Job Number C610-00558 |
|-----------------------------|------------------|-----------------------|----------------------|--------------|--------------------------|---------|--------------------------|--|--------------------------|
| Date | Time 24-hr clock | Treating Pressure PSI | Flow Rate B/M | Density LB/G | Volume BBL | SF NULL | Message | | |
| 08/28/2012 | 16:56:30 | 997 | 0.0 | 8.49 | 1267.7 | 0 | | | |
| 08/28/2012 | 16:56:41 | | | | | | Bleed Off Pressure | | |
| 08/28/2012 | 16:56:41 | 714 | 0.0 | 8.49 | 1267.7 | 0 | | | |
| 08/28/2012 | 16:57:15 | | | | | | Floats Held, 1 BBls Back | | |
| 08/28/2012 | 16:57:15 | 102 | 0.0 | 8.49 | 1267.7 | 0 | | | |
| 08/28/2012 | 17:00:00 | 102 | 0.0 | 8.49 | 1267.7 | 9 | | | |
| 08/28/2012 | 17:01:39 | | | | | | Start Pumping Wash | | |
| 08/28/2012 | 17:01:39 | 102 | 0.0 | 8.49 | 1267.7 | 0 | | | |
| 08/28/2012 | 17:05:00 | 284 | 4.9 | 8.49 | 1276.6 | 4 | | | |
| 08/28/2012 | 17:10:00 | 502 | 7.7 | 8.48 | 1308.1 | 5 | | | |
| 08/28/2012 | 17:15:00 | 102 | 0.0 | 8.49 | 1309.6 | 0 | | | |
| 08/28/2012 | 17:20:00 | 102 | 0.0 | 8.48 | 1309.6 | 0 | | | |
| 08/28/2012 | 17:25:00 | 101 | 0.0 | 8.48 | 1309.6 | 0 | | | |
| 08/28/2012 | 17:30:00 | 101 | 0.0 | 8.48 | 1309.6 | 0 | | | |
| 08/28/2012 | 17:35:00 | 101 | 0.0 | 8.48 | 1309.6 | 0 | | | |
| 08/28/2012 | 17:40:00 | 101 | 0.0 | 8.48 | 1309.6 | 0 | | | |
| 08/28/2012 | 17:45:00 | 101 | 0.0 | 8.48 | 1309.6 | 0 | | | |
| 08/28/2012 | 17:50:00 | 102 | 0.0 | 8.48 | 1309.6 | 0 | | | |
| 08/28/2012 | 17:53:07 | | | | | | Pump Down Parasite | | |
| 08/28/2012 | 17:53:07 | 102 | 0.0 | 8.48 | 1309.6 | 0 | | | |
| 08/28/2012 | 17:55:00 | | | | | | End Job | | |

Post Job Summary

| Average Pump Rates, bbl/min | | | | | Volume of Fluid Injected, bbl | | | |
|--|------------|------------------------|---|-------------------------|-------------------------------|--|--|--|
| Slurry 0.0 | N2 | Mud 0.0 | Maximum Rate 0.0 | Total Slurry 0.0 | Mud 0.0 | Spacer 0.0 | N2 | |
| Treating Pressure Summary, psi | | | | | Breakdown Fluid | | | |
| Maximum 0 | Final 0 | Average 0 | Bump Plug to 500 | Breakdown | Type | Volume | Density | |
| Avg. N2 Percent | | Designed Slurry Volume | | Displacement 0.0 bbl | Mix Water Temp | Cement Circulated to Surface? <input type="checkbox"/> | Volume | |
| | | | | | | Washed Thru Perfs <input type="checkbox"/> | To | |
| Customer or Authorized Representative Andrew Baltes | | | Schlumberger Supervisor Rogers / Fairbrook | | | Circulation Lost <input type="checkbox"/> | Job Completed <input type="checkbox"/> | |
| | | | | | | - | - | |