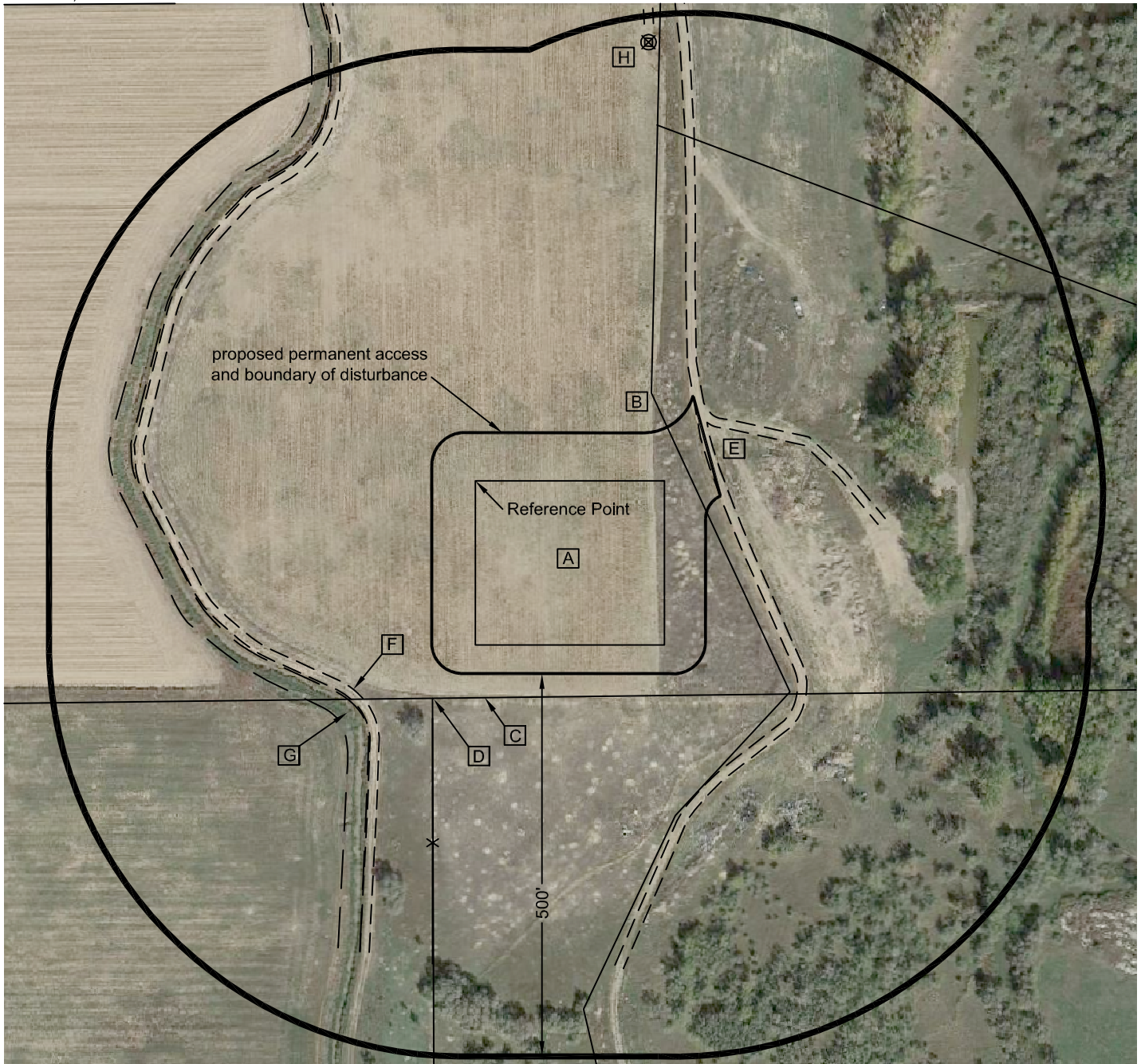


Location Drawing

JR Land Surveying, LLC
 8114 Northstar Drive
 Windsor, Colorado 80528
 P. 970-576-4641

Nearest:
 Building: 1,053' southwest
 Property Line: 257' northeast
 Above Ground Utility: 978' southwest
 Public Road: 1,016' north
 Railroad: 2,098' southeast

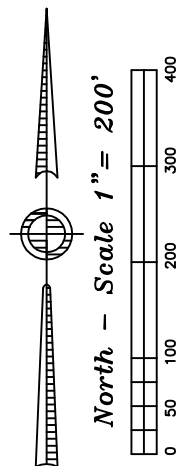


Distances listed below are measured from the Northwest corner of the proposed facility pads

- [A] proposed facility pads
- [B] property line 257' northeast
- [C] property line 283' south
- [D] property line/fence 315' southwest
- [E] access 299' northeast
- [F] access 315' southwest
- [G] ditch 330' southwest
- [H] existing Lochbuie 21-31; 615' northeast

Reference Point Data:
 Northwest corner of the proposed facility pads
 Latitude: N 40.01220°
 Longitude: W 104.71007°
 FNL: 1040'
 FWL: 1702'
 EL: 5000'
 PDOP: 1.6

Existing Well Data:
 Lochbuie 21-31
 Latitude: N 40.01376°
 Longitude: W 104.70924°
 FNL: 471'
 FWL: 1934'
 EL: 4997'
 PDOP: 2.2



**Lochbuie NENW
 Proposed Facilities Drawing**

Improvements extending
 500' from disturbance

Township 1 North, Range 65 West,
 Section 31: NE ¼ NW ¼
 Weld County, Colorado

June 10, 2013

Field observations taken on 4/18/13 by operator John Rice.