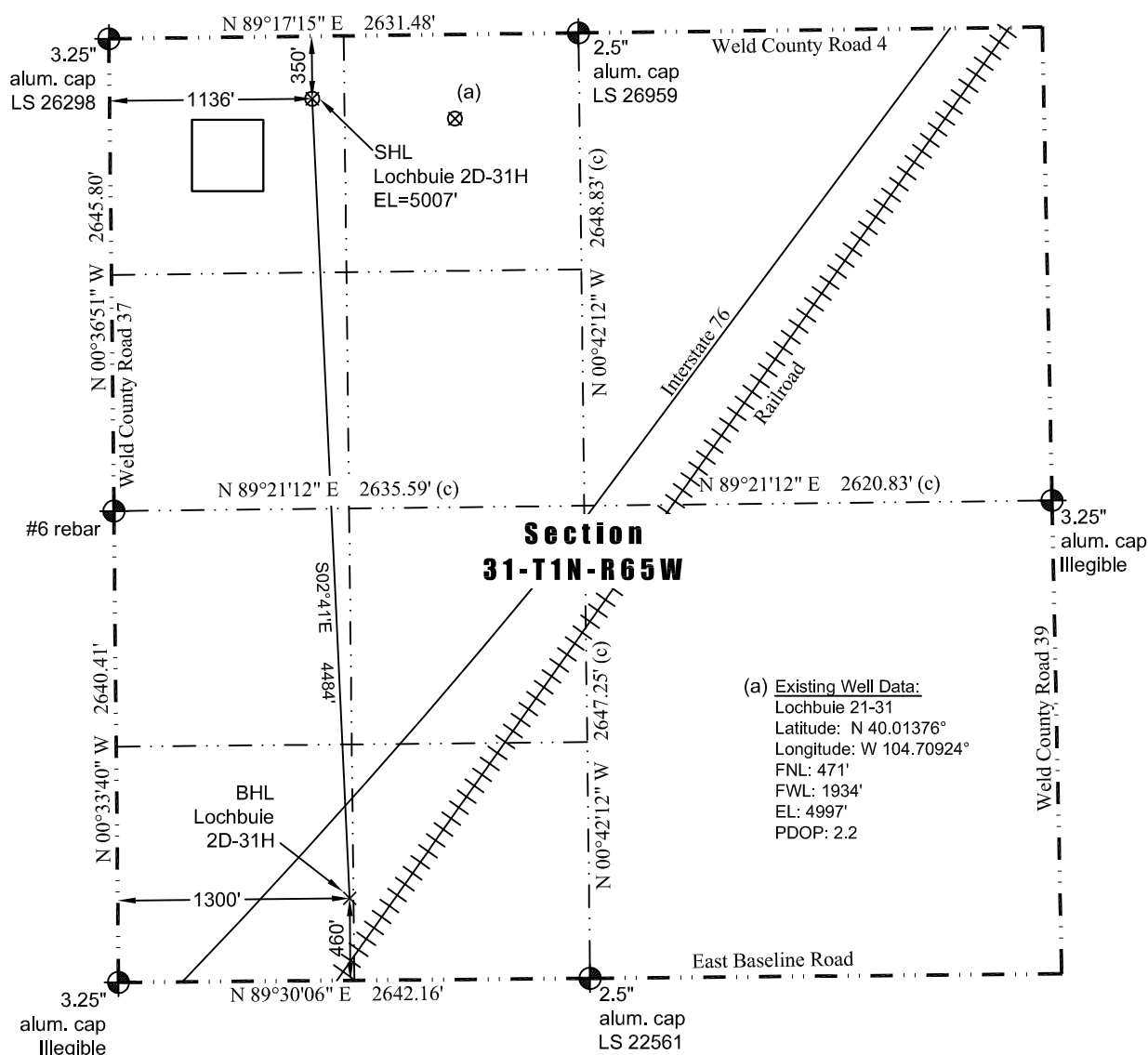


8114 Northstar Drive
Windsor, Colorado 80528
P. 970-576-4641

THIS MAP DOES NOT REPRESENT A BOUNDARY SURVEY



Latitude: N 40.01408° (BHL: 40.00179°)
Longitude: W 104.71209° (BHL: 104.71149°)
PDOP: 2.0

Building: 592' west	Above Ground Utility: 305' north
Public Road: 329' north	Railroad: 2,961' southeast
Property Line: 350' north	Well Window: SHL is 298' outside
Existing Well: Lochbuie 21-31, 807' southeast	

- 1) Bearings and distances based on NAD 83 Colorado North State Plane Coordinate, using RTK GPS observations taken 4/18/13 by operator John Rice.
- 2) Conversion factor to ground (1.0002722148).
- 3) Elevations based on NAVD 88 GPS heights and Geoid 2003 corrections.
- 4) See Location Drawing for visible improvements within 500 feet of Pad Site.
- 5) The surface use is a cultivated field.

I hereby certify that this Well Location Certificate was prepared by me or under my direct supervision on 4/19/2013 for and on behalf of EnCana Oil & Gas (USA) Inc. That it is not a Land Survey Plat or an Improvement Survey Plat and that it is not to be relied upon for establishment of fences, buildings, or other future improvement lines.

John Robert McGehee LS#38219
Well: Lochbuie 2D-31H WLC