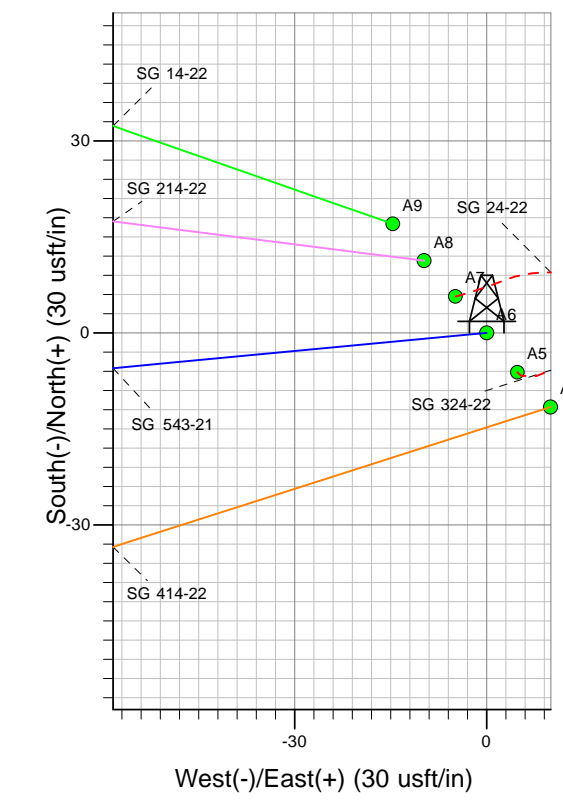
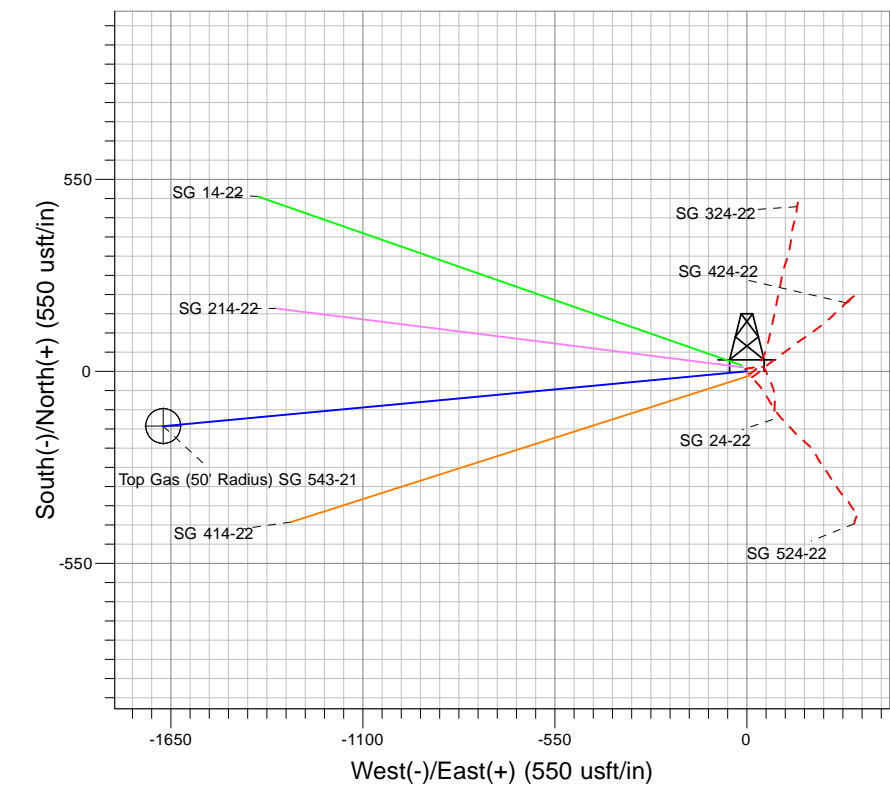
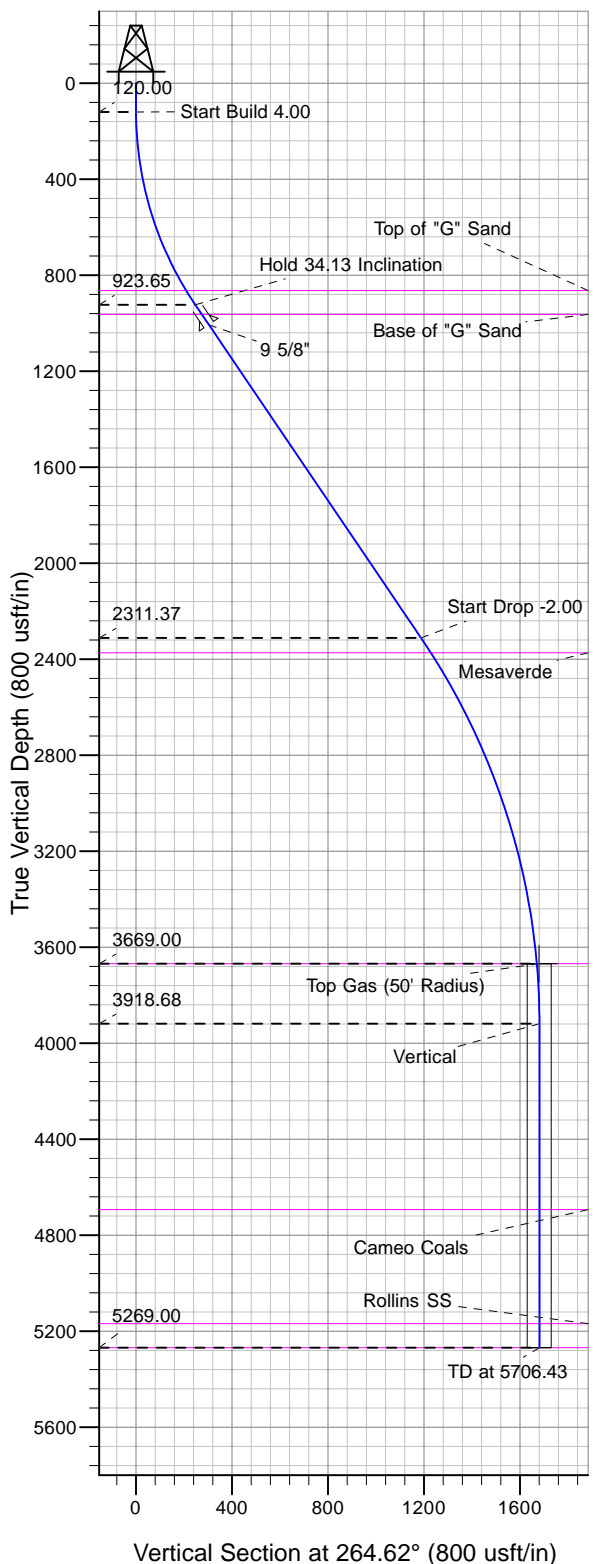




Well Name: SG 543-21  
 Surface Location: SG 24-22 Pad  
 North American Datum 1983 , US State Plane 1983, Colorado Central Zone  
 Ground Elevation: 5248.00

+N/-S	+E/-W	Northing	Easting	Latitude	Longitude	Slot
0.00	0.00	1587479.04	2265488.37	39.41753	-108.10026	A6

KELLY BUSHING @ 5274.00usft (Nabors 577 (26' RKB) kjs)



Project: SG 22-07S-096W  
 Site: SG 24-22 Pad  
 Well: SG 543-21  
 Design #2 25Mar13 kjs

**T M**  
 Azimuths to True North  
 Magnetic North: 10.65°  
 Magnetic Field  
 Strength: 52445.9snT  
 Dip Angle: 65.72°  
 Date: 4/6/2009  
 Model: IGRF2005-10

ANNOTATIONS

MD	Inc	Azi	TVD	+N/-S	+E/-W	VSect	Departure	Annotation
120.00	0.00	0.00	120.00	0.00	0.00	0.00	0.00	Start Build 4.00
973.22	34.13	264.62	923.65	-23.11	-245.61	246.69	246.69	Hold 34.13 Inclination
2649.66	34.13	264.62	2311.37	-111.23	-1182.05	1187.27	1187.27	Start Drop -2.00
4106.11	5.00	264.62	3669.00	-156.43	-1662.41	1669.75	1669.75	Top Gas
4356.11	0.00	0.00	3918.68	-157.45	-1673.26	1680.65	1680.65	Vertical
5706.43	0.00	0.00	5269.00	-157.45	-1673.26	1680.65	1680.65	TD at 5706.43