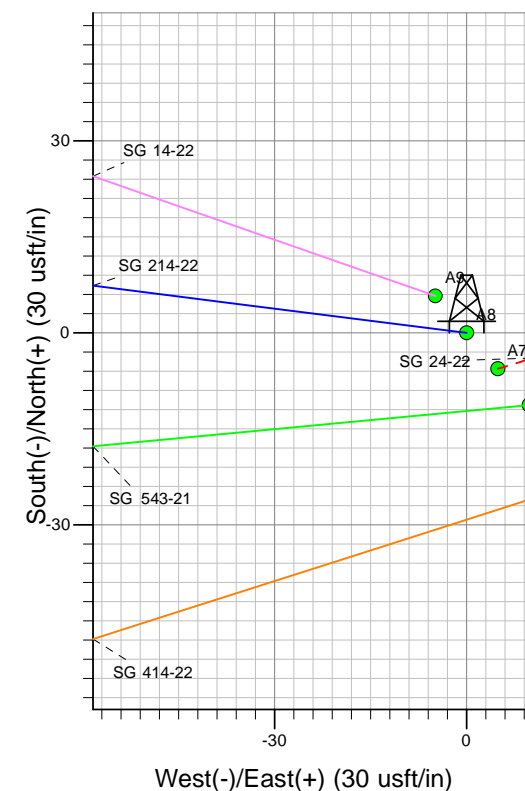
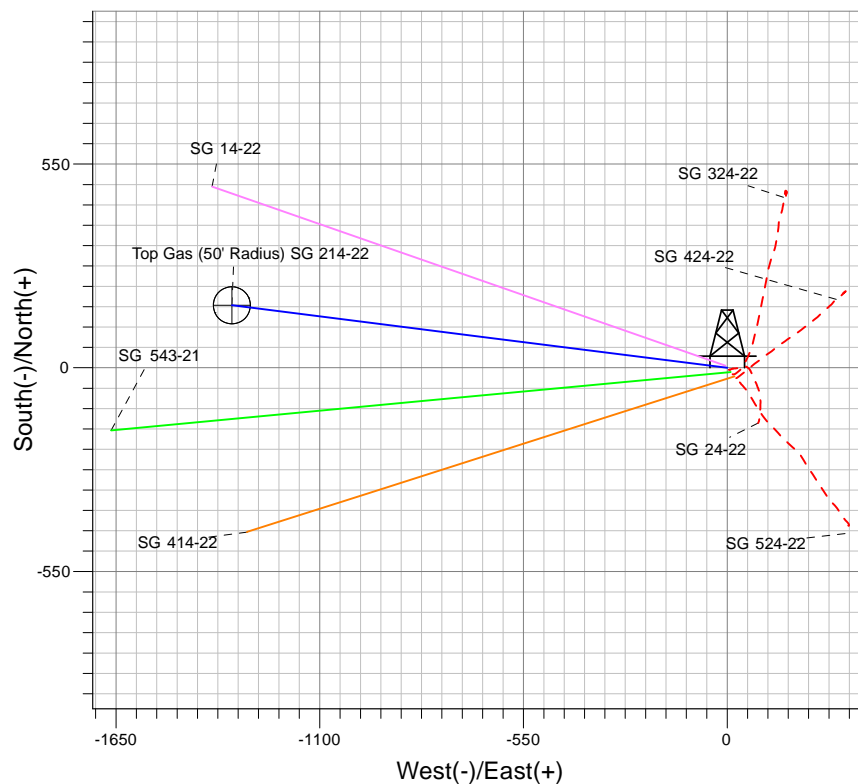
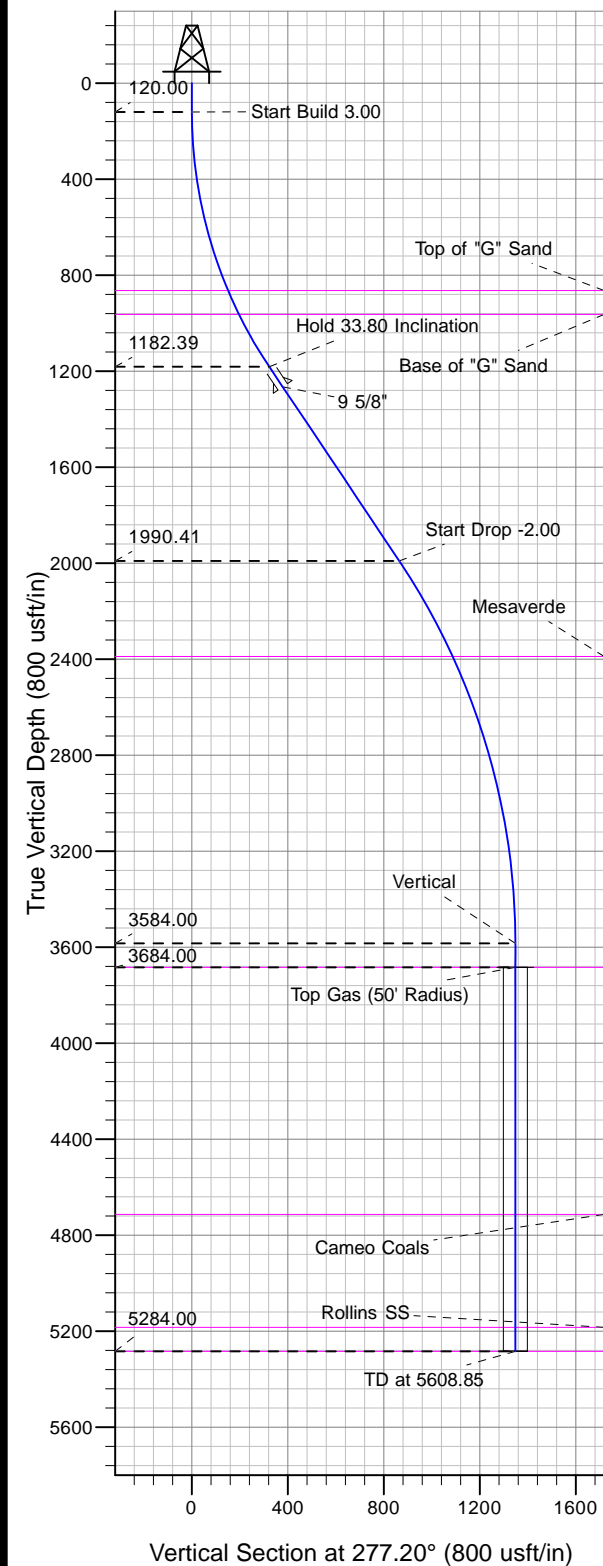




Well Name: SG 214-22
Surface Location: SG 24-22 Pad
North American Datum 1983 , US State Plane 1983, Colorado Central Zone
Ground Elevation: 5248.00

+N/-S	+E/-W	Northing	Easting	Latitude	Longitude	Slot
0.00	0.00	1587490.60	2265478.91	39.41756	-108.10029	A8

KELLY BUSHING @ 5274.00usft (Nabors 577 (26' RKB) kjs)



Project: SG 22-07S-096W
Site: SG 24-22 Pad
Well: SG 214-22
Design #2 25Mar13 kjs

Azimuths to True North
Magnetic North: 10.65°
Magnetic Field
Strength: 52445.9snT
Dip Angle: 65.72°
Date: 4/6/2009
Model: IGRF2005-10

ANNOTATIONS

MD	Inc	Azi	TVD	+N/-S	+E/-W	VSect	Departure	Annotation
120.00	0.00	0.00	120.00	0.00	0.00	0.00	0.00	Start Build 3.00
1246.60	33.80	277.20	1182.39	40.43	-320.22	322.76	322.76	Hold 33.80 Inclination
2218.94	33.80	277.20	1990.41	108.18	-856.84	863.64	863.64	Start Drop -2.00
3908.85	0.00	0.00	3584.00	168.83	-1337.17	1347.78	1347.78	Vertical
4008.85	0.00	0.00	3684.00	168.83	-1337.17	1347.78	1347.78	Top Gas
5608.85	0.00	0.00	5284.00	168.83	-1337.17	1347.78	1347.78	TD at 5608.85