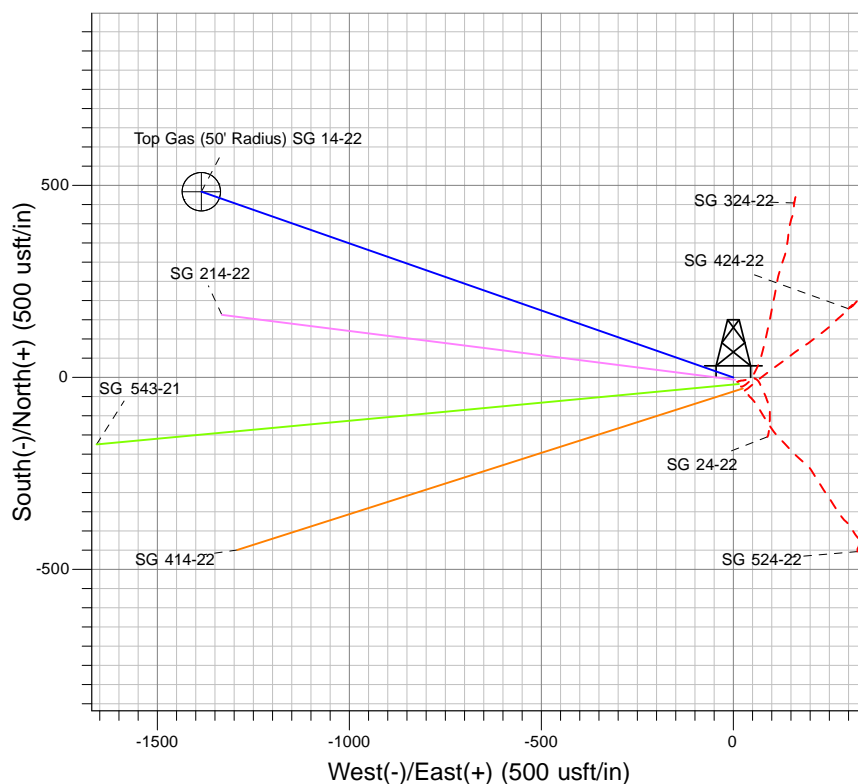
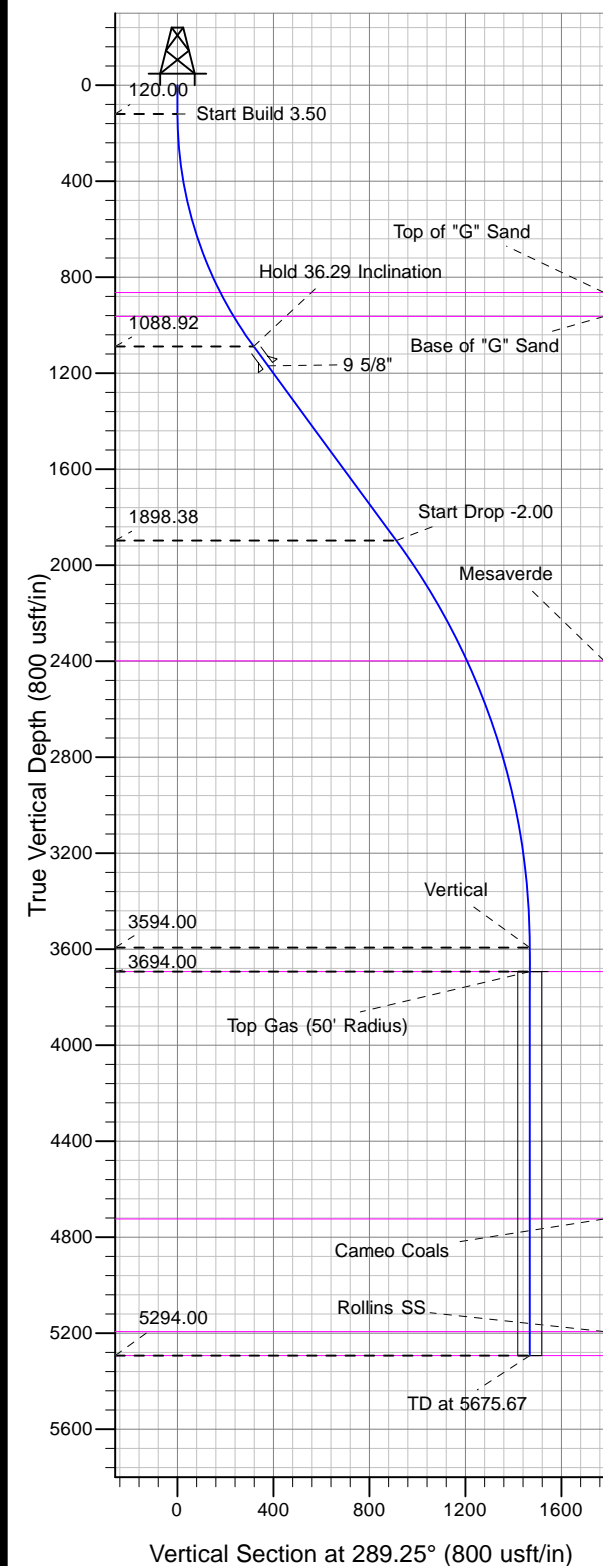




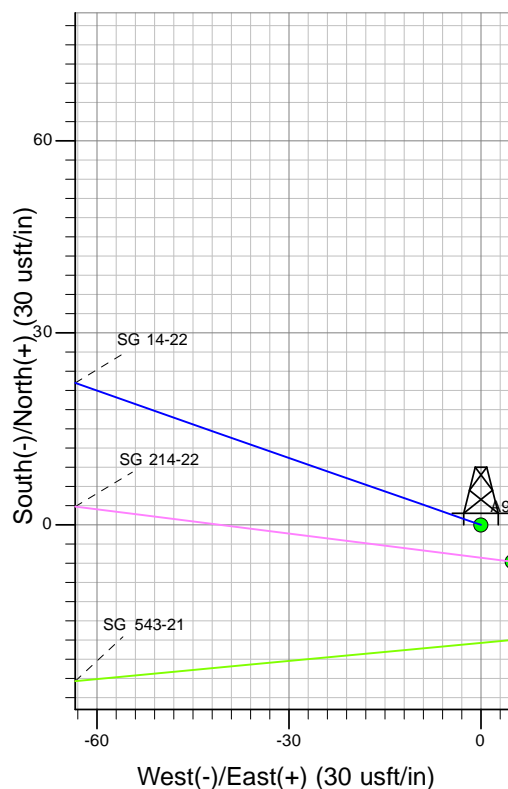
Well Name: SG 14-22
Surface Location: SG 24-22 Pad
North American Datum 1983 , US State Plane 1983 , Colorado Central Zone
Ground Elevation: 5248.00

+N/-S	+E/-W	Northing	Easting	Latitude	Longitude	Slot
0.00	0.00	1587496.51	2265474.18	39.41758	-108.10031	A9

KELLY BUSHING @ 5274.00usft (Nabors 577 (26' RKB) kjs)



Project: SG 22-07S-096W
Site: SG 24-22 Pad
Well: SG 14-22
Design #2 25Mar13 kjs



Azimuths to True North
Magnetic North: 10.65°

Magnetic Field
Strength: 52445.9snT
Dip Angle: 65.72°
Date: 4/6/2009
Model: IGRF2005-10

ANNOTATIONS

MD	Inc	Azi	TVD	+N/-S	+E/-W	Vsect	Departure	Annotation
120.00	0.00	0.00	120.00	0.00	0.00	0.00	0.00	Start Build 3.50
1156.88	36.29	289.25	1088.92	104.68	-299.79	317.54	317.54	Hold 36.29 Inclination
2161.14	36.29	289.25	1898.38	300.62	-860.97	911.95	911.95	Start Drop -2.00
3975.67	0.00	0.00	3594.00	483.81	-1385.61	1467.64	1467.64	Vertical
4075.67	0.00	0.00	3694.00	483.81	-1385.61	1467.64	1467.64	Top Gas
5675.67	0.00	0.00	5294.00	483.81	-1385.61	1467.64	1467.64	TD at 5675.67