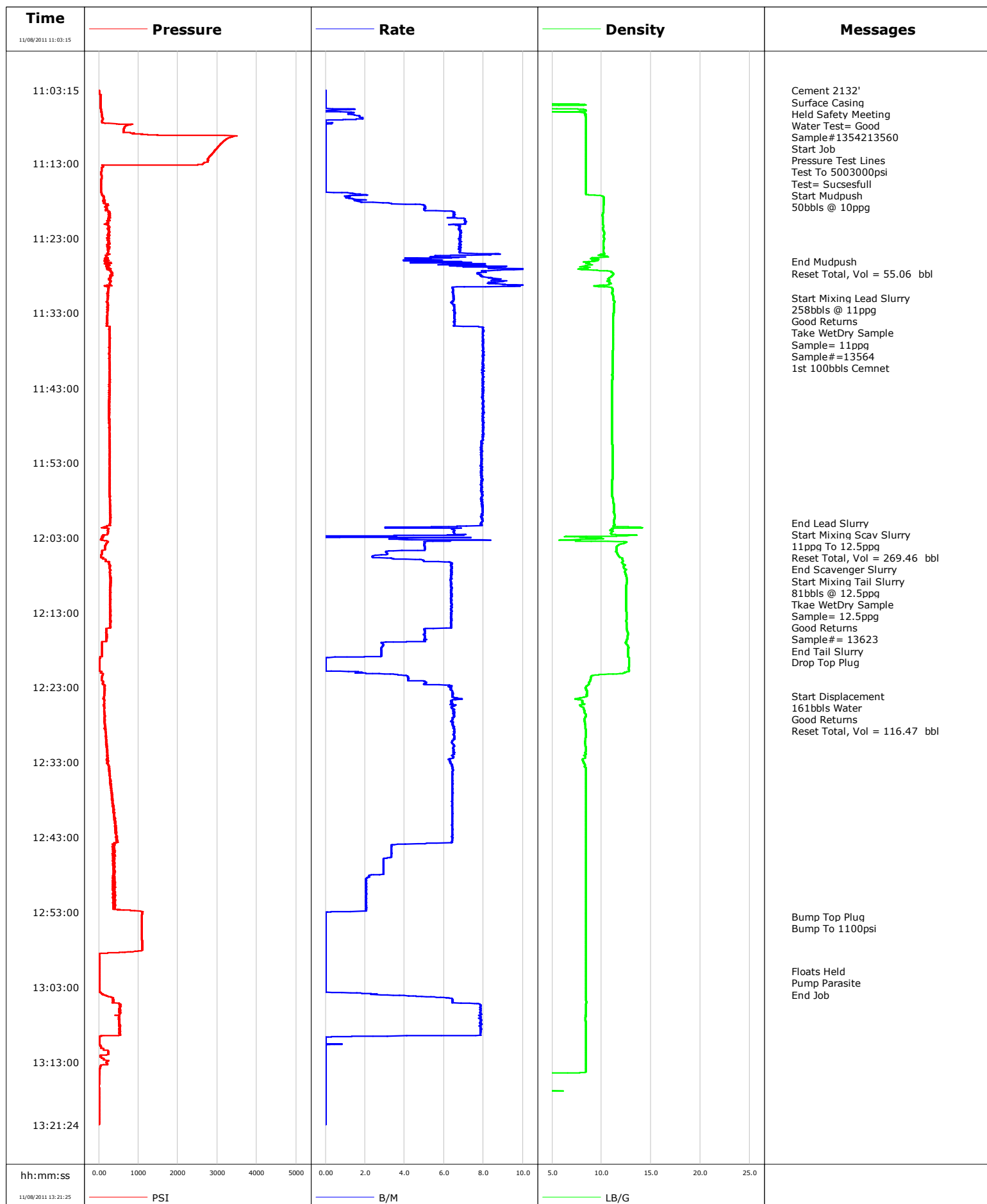


Well	SGU 8506D	Client	ENCANA
Field	STORY GULCH	SIR No.	BQMF-00338
Engineer		Job Type	SURFACE
Country	United States	Job Date	11-08-2011

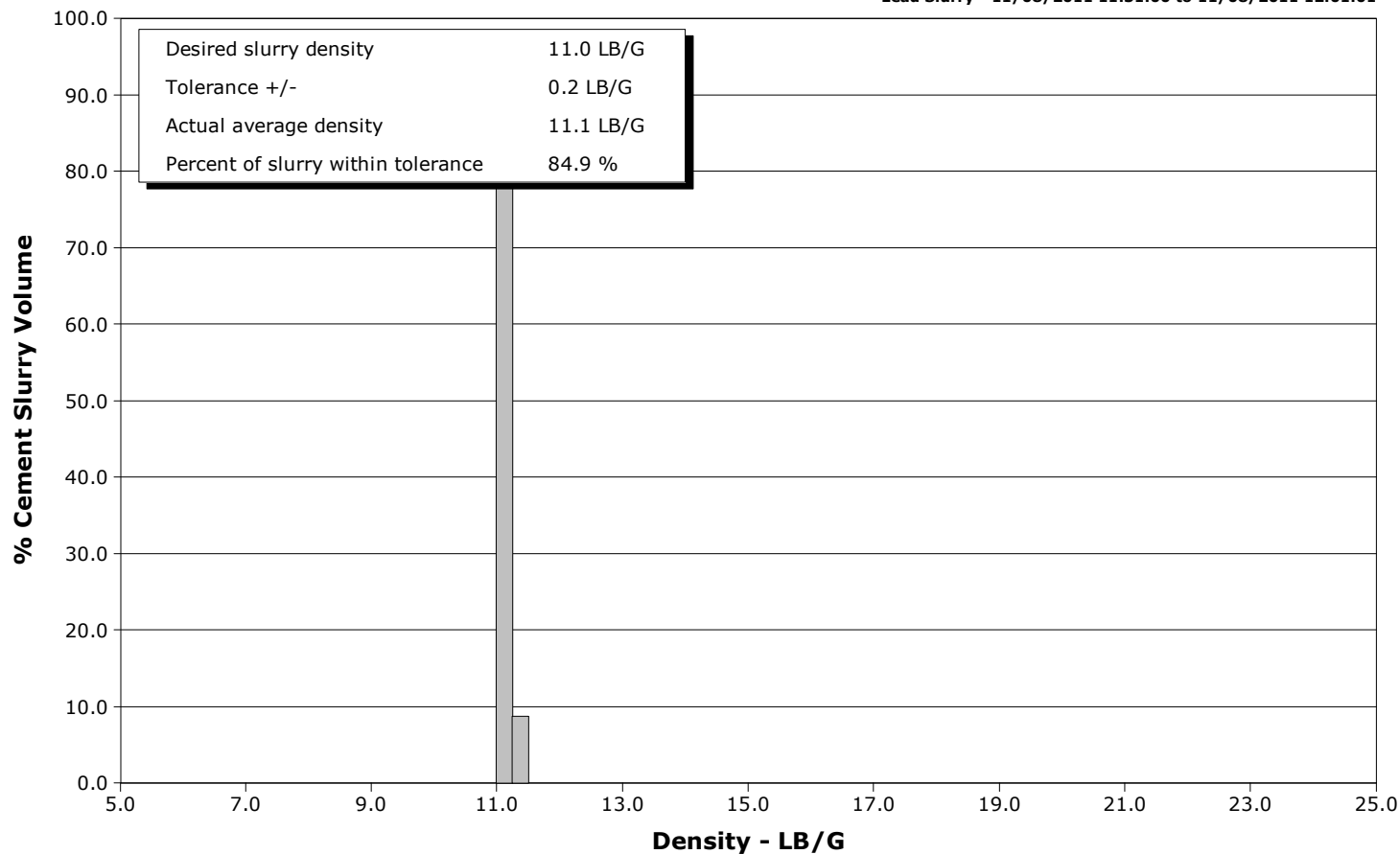


Schlumberger Cementing Qa/Qc Density Report

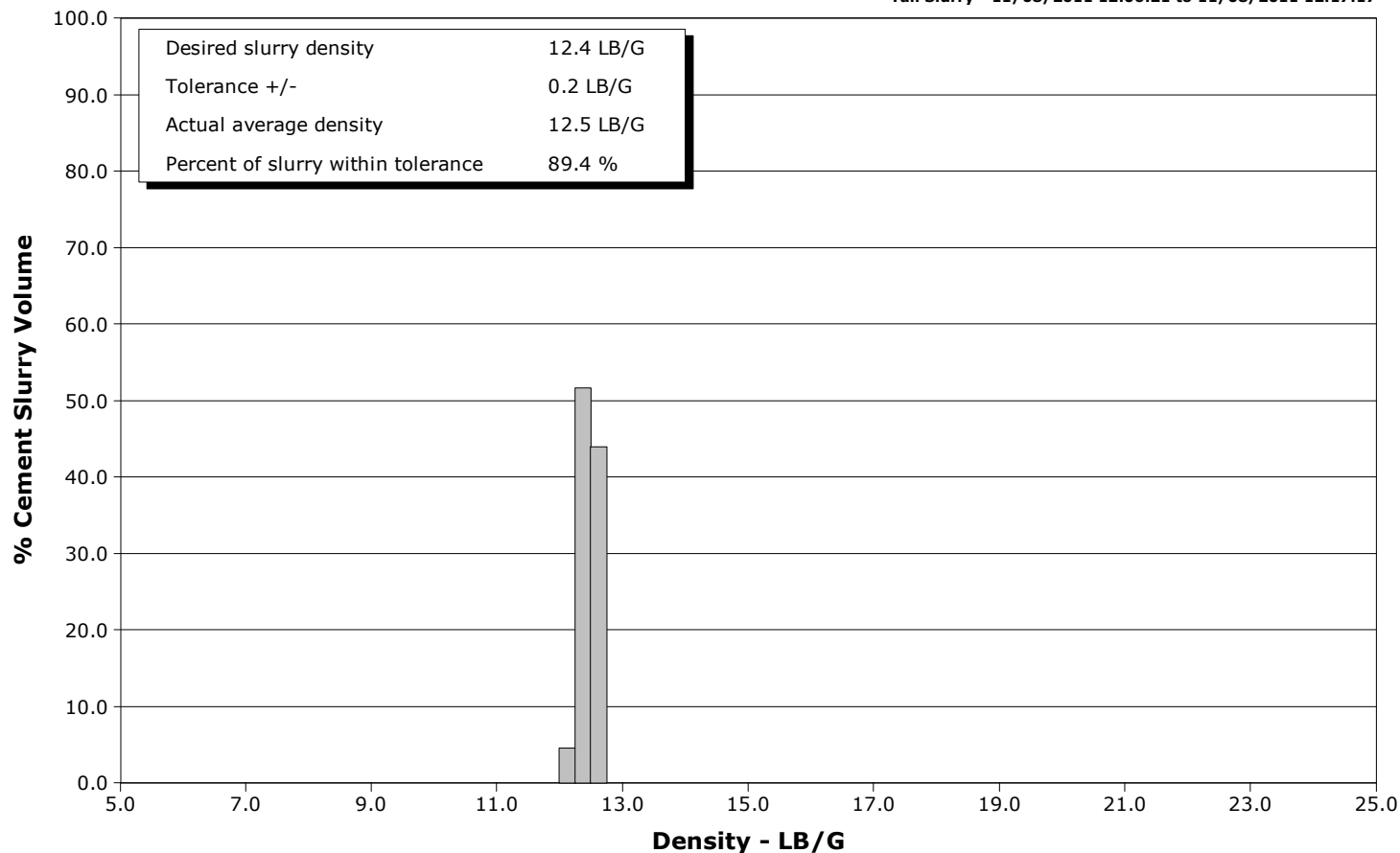
Well SGU 8506D
Field STORY GULCH
Engineer
Country United States

Client ENCANA
SIR No. BQMF-00338
Job Type SURFACE
Job Date 11-08-2011

Lead Slurry - 11/08/2011 11:31:00 to 11/08/2011 12:01:01



Tail Slurry - 11/08/2011 12:06:21 to 11/08/2011 12:17:17





Cementing Service Report

				Customer ENCANA			Job Number BQMF-00338								
Well SGU 8506D			Location (legal) COLORADO			Schlumberger Location GCO			Job Start Nov/08/2011						
Field STORY GULCH		Formation Name/Type			Deviation		Bit Size		Well MD		Well TVD				
County GARFIELD		State/Province Colorado			BHP		BHST		BHCT		Pore Press. Gradient				
Well Master 0631277946		API/UWI													
Rig Name patterson 306		Drilled For Gas		Service Via Land		Casing/Liner									
						Depth,		Size,		Weight,		Grade		Thread	
Offshore Zone		Well Class New		Well Type Development											
Drilling Fluid Type		Max. Density		Plastic Viscosity		Tubing/Drill Pipe									
						Depth,		Size,		Weight,		Grade		Thread	
Service Line Cementing		Job Type SURFACE													
Max. Allowed Tub. Press		Max. Allowed Ann. Press		WH Connection Single Cement head		Perforations/Open Hole									
						Top,		Bottom,				No. of Shots		Total Interval	
Service Instructions 50bbbls MP 505sks 11ppg litefill 250sks 12.5ppg litefill															
						Treat Down Casing		Displacement 161.0 bbl		Packer Type		Packer Depth			
						Tubing Vol.		Casing Vol. 165.0 bbl		Annular Vol. 259.0 bbl		Openhole Vol. 424.0 bbl			
Casing/Tubing Secured <input checked="" type="checkbox"/>		1 Hole Vol. Circulated prior to Cement <input checked="" type="checkbox"/>				Casing Tools				Squeeze Job					
Lift Pressure 1055 psi						Shoe Type Guide				Squeeze Type					
Pipe Rotated <input type="checkbox"/>		Pipe Reciprocated <input type="checkbox"/>				Shoe Depth 2132.0 ft				Tool Type					
No. Centralizers		Top Plugs		Bottom Plugs		Stage Tool Type				Tool Depth					
Cement Head Type						Stage Tool Depth				Tail Pipe Size					
Job Scheduled For Nov/08/2011		Arrived on Location Nov/08/2011		Leave Location Nov/08/2011		Collar Type Diff-Fill				Tail Pipe Depth					
						Collar Depth 2086.0 ft				Sqz. Total Vol.					
Date	Time 24-hr clock	Treating Pressure PSI		Flow Rate B/M		Density LB/G		Volume BBL		Message					
11/08/2011	10:11:58									Started Acquisition					
11/08/2011	11:03:15									Cement 2132'					
11/08/2011	11:03:15									Surface Casing					
11/08/2011	11:03:15									Held Safety Meeting					
11/08/2011	11:03:15	2		0.0		0.01		0.0							
11/08/2011	11:03:16									Water Test= Good					
11/08/2011	11:03:16									Sample#1354213560					
11/08/2011	11:03:16	2		0.0		0.01		0.0							
11/08/2011	11:03:17									Start Job					
11/08/2011	11:03:17	2		0.0		0.01		0.0							
11/08/2011	11:03:19									Pressure Test Lines					
11/08/2011	11:03:19	2		0.0		0.01		0.0							
11/08/2011	11:03:21									Test To 5003000psi					
11/08/2011	11:03:21									Test= Sucsesfull					
11/08/2011	11:03:21	2		0.0		0.01		0.0							
11/08/2011	11:03:58	45		0.0		0.01		0.0							
11/08/2011	11:05:58	55		0.2		8.41		0.2							
11/08/2011	11:07:58	711		0.0		8.42		1.9							
11/08/2011	11:09:58	3184		0.0		8.42		1.9							
11/08/2011	11:11:58	2833		0.0		8.42		1.9							
11/08/2011	11:13:58	68		0.0		8.41		1.9							

Well			Field		Job Start		Customer		Job Number	
SGU 8506D			STORY GULCH		Nov/08/2011		ENCANA		BQMF-00338	
Date	Time 24-hr clock	Treating Pressure PSI	Flow Rate B/M	Density LB/G	Volume BBL	Message				
11/08/2011	11:14:46					50bbls @ 10ppg				
11/08/2011	11:14:46	68	0.0	8.42	1.9					
11/08/2011	11:15:58	57	0.0	8.42	1.9					
11/08/2011	11:17:58	98	1.5	10.22	3.4					
11/08/2011	11:19:58	280	6.5	10.09	12.9					
11/08/2011	11:21:58	246	6.8	10.16	26.5					
11/08/2011	11:23:58	228	6.8	10.20	40.1					
11/08/2011	11:25:58	171	3.9	9.23	53.1					
11/08/2011	11:26:08					End Mudpush				
11/08/2011	11:26:08	222	6.9	8.98	53.9					
11/08/2011	11:26:19					Reset Total, Vol = 55.06 bbl				
11/08/2011	11:26:19	174	6.0	8.77	55.1					
11/08/2011	11:27:58	286	7.9	11.13	68.2					
11/08/2011	11:29:58	238	6.5	11.10	84.5					
11/08/2011	11:31:00					Start Mixing Lead Slurry				
11/08/2011	11:31:00	229	6.5	11.22	91.2					
11/08/2011	11:31:10					258bbls @ 11ppg				
11/08/2011	11:31:10					Good Returns				
11/08/2011	11:31:10					Take WetDry Sample				
11/08/2011	11:31:10					Sample= 11ppg				
11/08/2011	11:31:10					Sample#=13564				
11/08/2011	11:31:10	222	6.5	11.22	92.2					
11/08/2011	11:31:11					1st 100bbls Cemnet				
11/08/2011	11:31:11	222	6.5	11.21	92.4					
11/08/2011	11:31:58	233	6.5	11.25	97.4					
11/08/2011	11:33:58	219	6.5	11.15	110.4					
11/08/2011	11:35:58	270	8.0	11.15	125.1					
11/08/2011	11:37:58	258	8.0	11.13	141.1					
11/08/2011	11:39:58	265	8.0	11.08	157.0					
11/08/2011	11:41:58	272	7.9	11.08	172.9					
11/08/2011	11:43:58	264	8.0	11.06	188.8					
11/08/2011	11:45:58	259	8.0	11.07	204.8					
11/08/2011	11:47:58	259	8.0	11.07	220.7					
11/08/2011	11:49:58	272	8.0	11.06	236.7					
11/08/2011	11:51:58	262	7.9	11.11	252.4					
11/08/2011	11:53:58	273	7.9	11.09	268.2					
11/08/2011	11:55:58	276	7.9	11.07	284.0					
11/08/2011	11:57:58	284	7.9	11.15	299.8					
11/08/2011	11:59:58	286	7.9	11.32	315.7					
11/08/2011	12:01:01					End Lead Slurry				
11/08/2011	12:01:01	288	7.9	11.25	324.0					
11/08/2011	12:01:02					Start Mixing Scav Slurry				
11/08/2011	12:01:02	288	7.9	11.25	324.1					
11/08/2011	12:01:03					11ppg To 12.5ppg				
11/08/2011	12:01:03	288	7.9	11.25	324.3					
11/08/2011	12:01:05					Reset Total, Vol = 269.46 bbl				
11/08/2011	12:01:05	283	7.9	11.25	324.5					
11/08/2011	12:01:58	239	6.5	10.98	330.4					
11/08/2011	12:03:58	173	5.0	11.75	340.6					
11/08/2011	12:05:58	171	4.9	12.11	348.1					
11/08/2011	12:06:20					End Scavenger Slurry				
11/08/2011	12:06:20	239	6.3	12.06	350.1					
11/08/2011	12:06:21					Start Mixing Tail Slurry				
11/08/2011	12:06:21	239	6.3	12.06	350.2					

Well			Field		Job Start		Customer		Job Number	
SGU 8506D			STORY GULCH		Nov/08/2011		ENCANA		BQMF-00338	
Date	Time 24-hr clock	Treating Pressure PSI	Flow Rate B/M	Density LB/G	Volume BBL	Message				
11/08/2011	12:06:22					Tkae WetDry Sample				
11/08/2011	12:06:22					Sample= 12.5ppg				
11/08/2011	12:06:22	254	6.4	12.07	350.3					
11/08/2011	12:06:23					Good Returns				
11/08/2011	12:06:23					Sample#= 13623				
11/08/2011	12:06:23	253	6.4	12.08	350.4					
11/08/2011	12:07:58	270	6.4	12.45	360.5					
11/08/2011	12:09:58	279	6.4	12.45	373.2					
11/08/2011	12:11:58	275	6.4	12.48	385.9					
11/08/2011	12:13:58	281	6.4	12.50	398.7					
11/08/2011	12:15:58	187	5.0	12.66	410.2					
11/08/2011	12:17:17					End Tail Slurry				
11/08/2011	12:17:17	84	2.9	12.55	416.1					
11/08/2011	12:17:26					Drop Top Plug				
11/08/2011	12:17:26	84	2.9	12.64	416.5					
11/08/2011	12:17:58	83	2.8	12.67	418.0					
11/08/2011	12:19:58	14	0.0	12.77	420.8					
11/08/2011	12:21:58	72	4.2	8.87	424.5					
11/08/2011	12:23:58	135	6.4	8.48	436.2					
11/08/2011	12:24:09					Start Displacement				
11/08/2011	12:24:09	129	6.4	8.49	437.4					
11/08/2011	12:24:10					161bbls Water				
11/08/2011	12:24:10	129	6.4	8.49	437.5					
11/08/2011	12:24:11					Good Returns				
11/08/2011	12:24:11	133	6.4	8.48	437.6					
11/08/2011	12:24:42					Reset Total, Vol = 116.47 bbl				
11/08/2011	12:24:42	138	6.4	7.96	441.0					
11/08/2011	12:25:58	132	6.5	8.22	449.1					
11/08/2011	12:27:58	150	6.4	8.34	462.0					
11/08/2011	12:29:58	192	6.5	8.38	475.0					
11/08/2011	12:31:58	215	6.5	8.38	487.9					
11/08/2011	12:33:58	254	6.4	8.41	500.7					
11/08/2011	12:35:58	301	6.4	8.41	513.5					
11/08/2011	12:37:58	346	6.4	8.41	526.4					
11/08/2011	12:39:58	373	6.4	8.41	539.2					
11/08/2011	12:41:58	445	6.5	8.40	552.0					
11/08/2011	12:43:58	381	3.7	8.40	564.5					
11/08/2011	12:45:58	359	2.9	8.40	571.1					
11/08/2011	12:47:58	360	2.9	8.40	577.0					
11/08/2011	12:49:58	410	2.1	8.40	581.2					
11/08/2011	12:51:58	415	2.1	8.40	585.3					
11/08/2011	12:53:34					Bump Top Plug				
11/08/2011	12:53:34	1088	0.0	8.40	587.4					
11/08/2011	12:53:35					Bump To 1100psi				
11/08/2011	12:53:35	1088	0.0	8.40	587.4					
11/08/2011	12:53:58	1087	0.0	8.40	587.4					
11/08/2011	12:55:58	1089	0.0	8.41	587.4					
11/08/2011	12:57:58	1093	0.0	8.41	587.4					
11/08/2011	12:59:58	13	0.0	8.41	587.4					
11/08/2011	13:00:55					Floats Held				
11/08/2011	13:00:55	13	0.0	8.41	587.4					
11/08/2011	13:01:58	12	0.0	8.41	587.4					
11/08/2011	13:03:58	98	2.6	8.41	587.7					
11/08/2011	13:05:58	514	7.8	8.41	600.6					

Well			Field		Job Start	Customer		Job Number
SGU 8506D			STORY GULCH		Nov/08/2011	ENCANA		BQMF-00338
Date	Time 24-hr clock	Treating Pressure PSI	Flow Rate B/M	Density LB/G	Volume BBL	Message		
11/08/2011	13:09:58	19	0.0	8.41	628.8			
11/08/2011	13:11:58	237	0.0	8.41	628.8			
11/08/2011	13:13:58	23	0.0	8.41	628.8			
11/08/2011	13:15:58	9	0.0	0.01	628.8			
11/08/2011	13:17:58	9	0.0	0.01	628.8			
11/08/2011	13:19:58	8	0.0	0.01	628.8			
11/08/2011	13:46:44					Pump Parasite		

Post Job Summary

Average Pump Rates,					Volume of Fluid Injected,			
Slurry	N2	Mud	Maximum Rate	Total Slurry	Mud	Spacer	N2	
Treating Pressure Summary,					Breakdown Fluid			
Maximum	Final	Average	Bump Plug to	Breakdown	Type	Volume	Density	
Avg. N2 Percent	Designed Slurry Volume 339.0 bbl		Displacement	Mix Water Temp 69 degF	Cement Circulated to Surface? <input checked="" type="checkbox"/>	Volume		
					Washed Thru Perfs <input type="checkbox"/>	To		
Customer or Authorized Representative MIKE QUINTANA			Schlumberger Supervisor CRICK/ ZACH			Circulation Lost <input type="checkbox"/>	Job Completed <input checked="" type="checkbox"/>	
					-		-	