



Timbro Federal LD18-74HN FINAL 5" TVD
(Scale: 5":100' (10'))

Company: NOBLE ENERGY INC

Well: TIMBRO FEDERAL LD18-74HN

Field: WILDCAT

Well ID: 05-123-36263

Job Number: RM-13139

Location: LAT: 40° 44' 40.121 N / LONG: 103° 54' 15.020 W

Operator 1: CHRIS ABBOTT

Operator 2: TROY MARDESEN

State: COLORADO

County: WELD

Country: USA

Elev KB: 4917

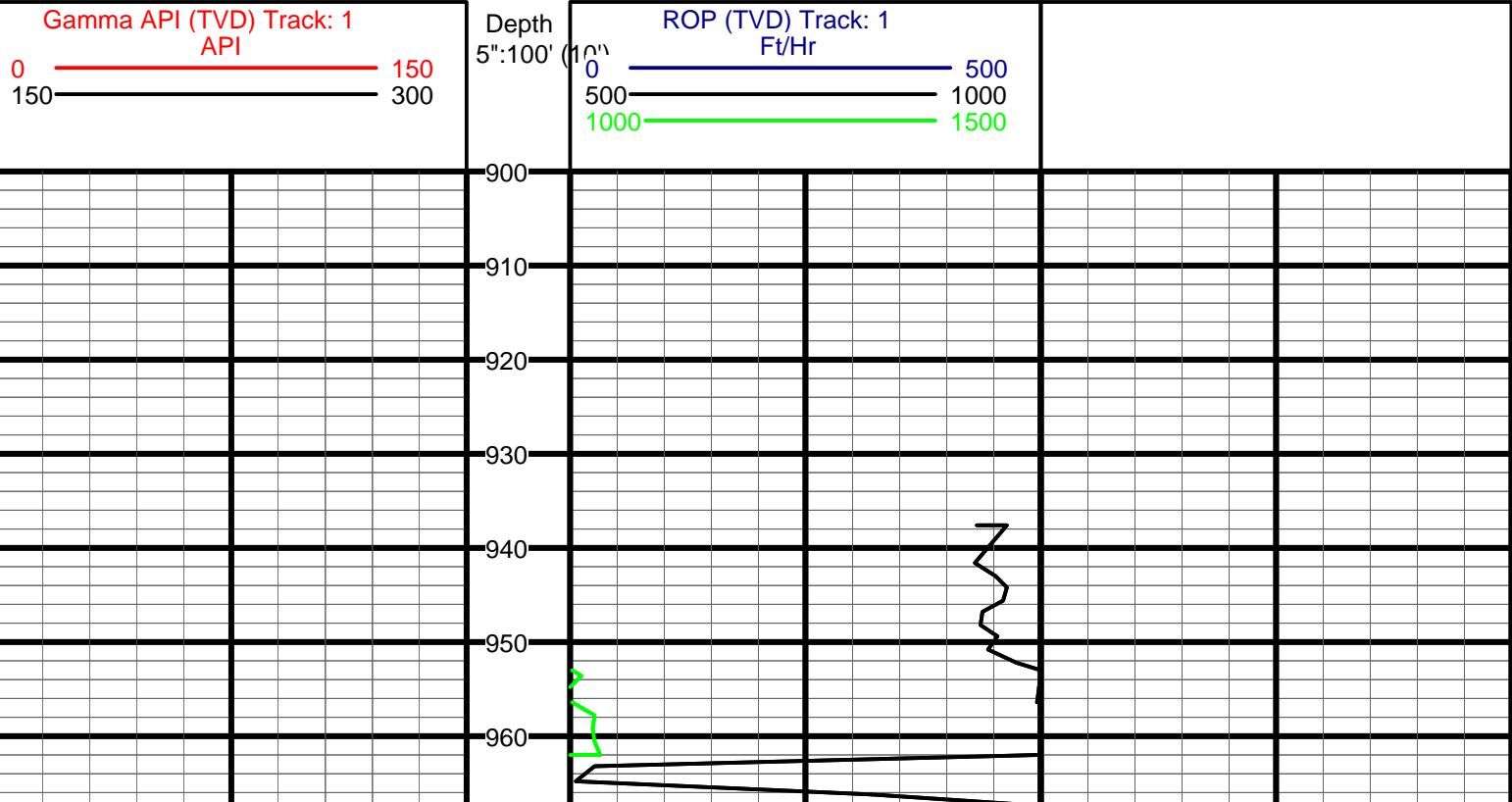
Elev DF: 30

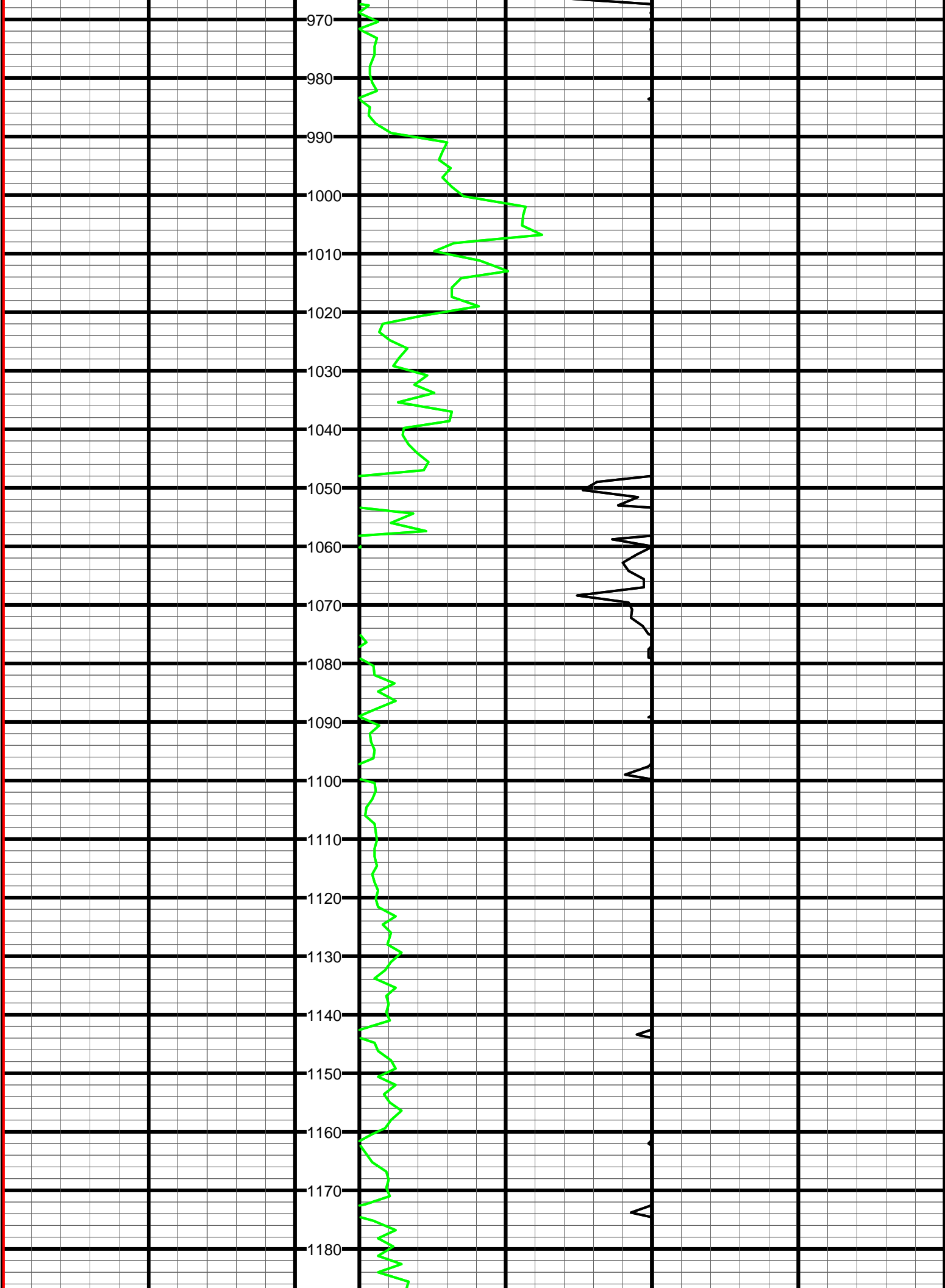
Elev GL: 4887

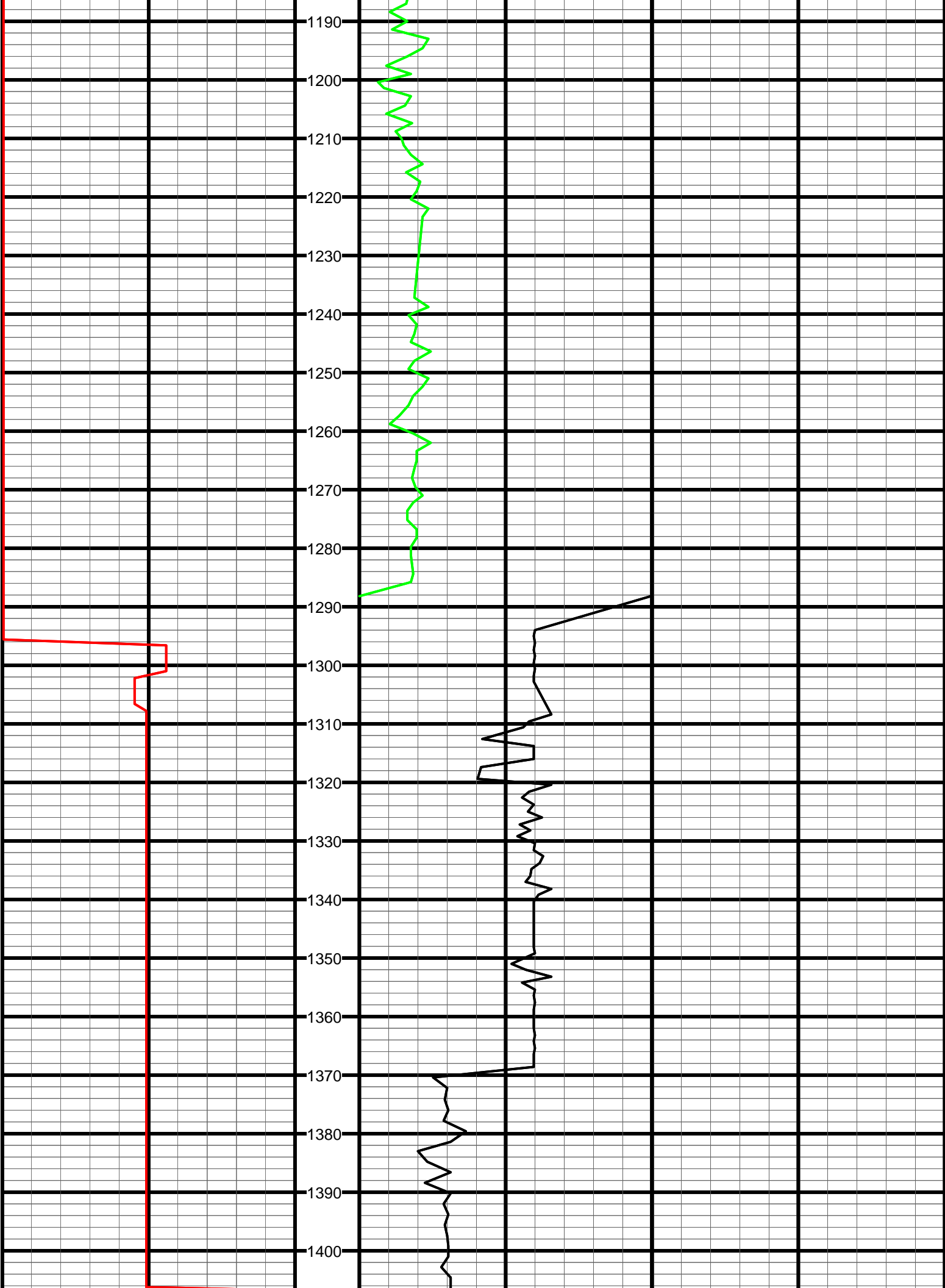
Comment 1:
Comment 2:
Comment 3:
Comment 4:
Comment 5:

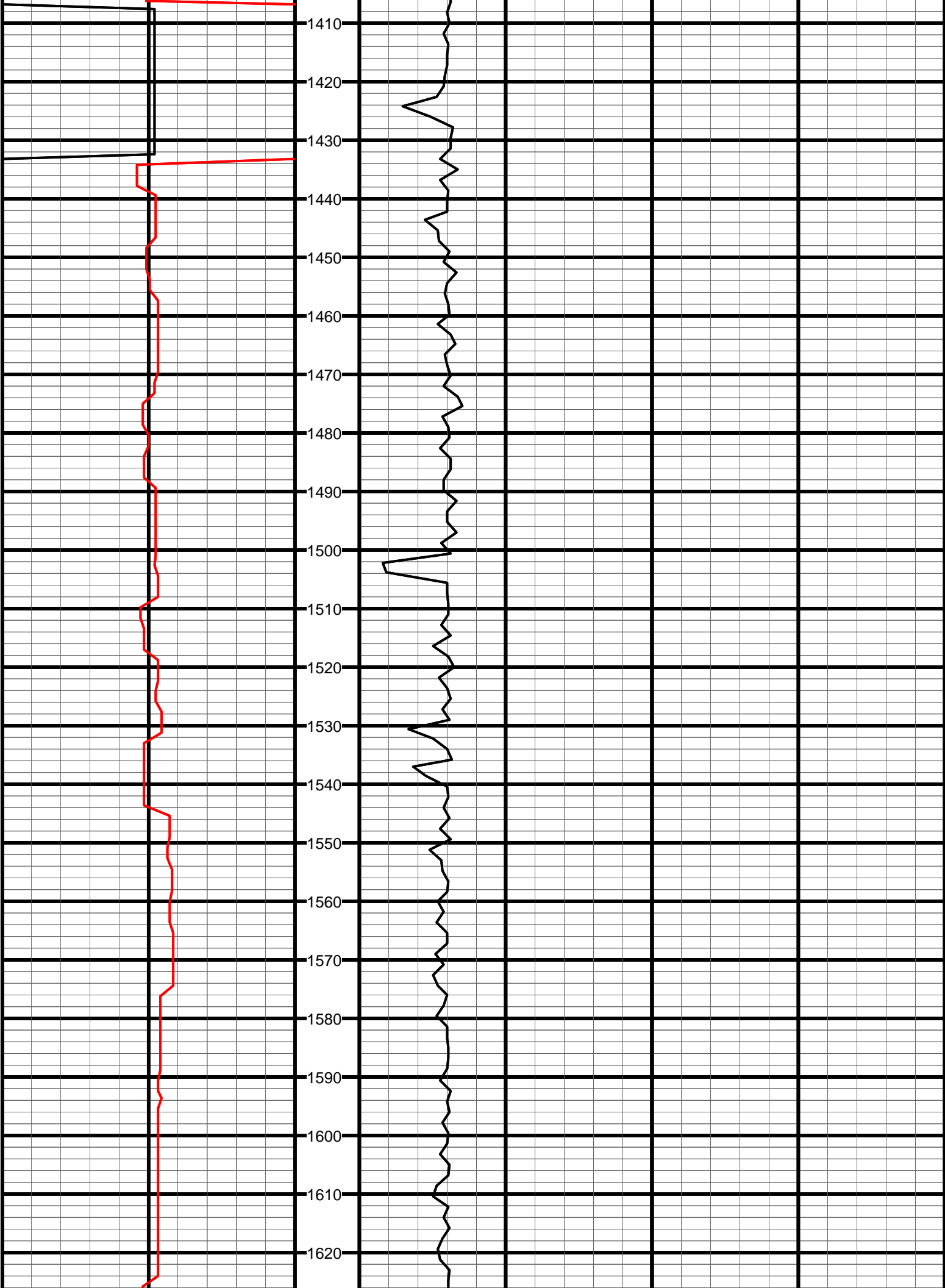
Hole Data			Casing Record		
Size	From	To	Size	From	To
13 3/4"	0'	899'	9 5/8"	0'	892'
8 3/4"	899'	6,365'	7"	892'	6,365'
6 1/8"	6,365'	10,271'			

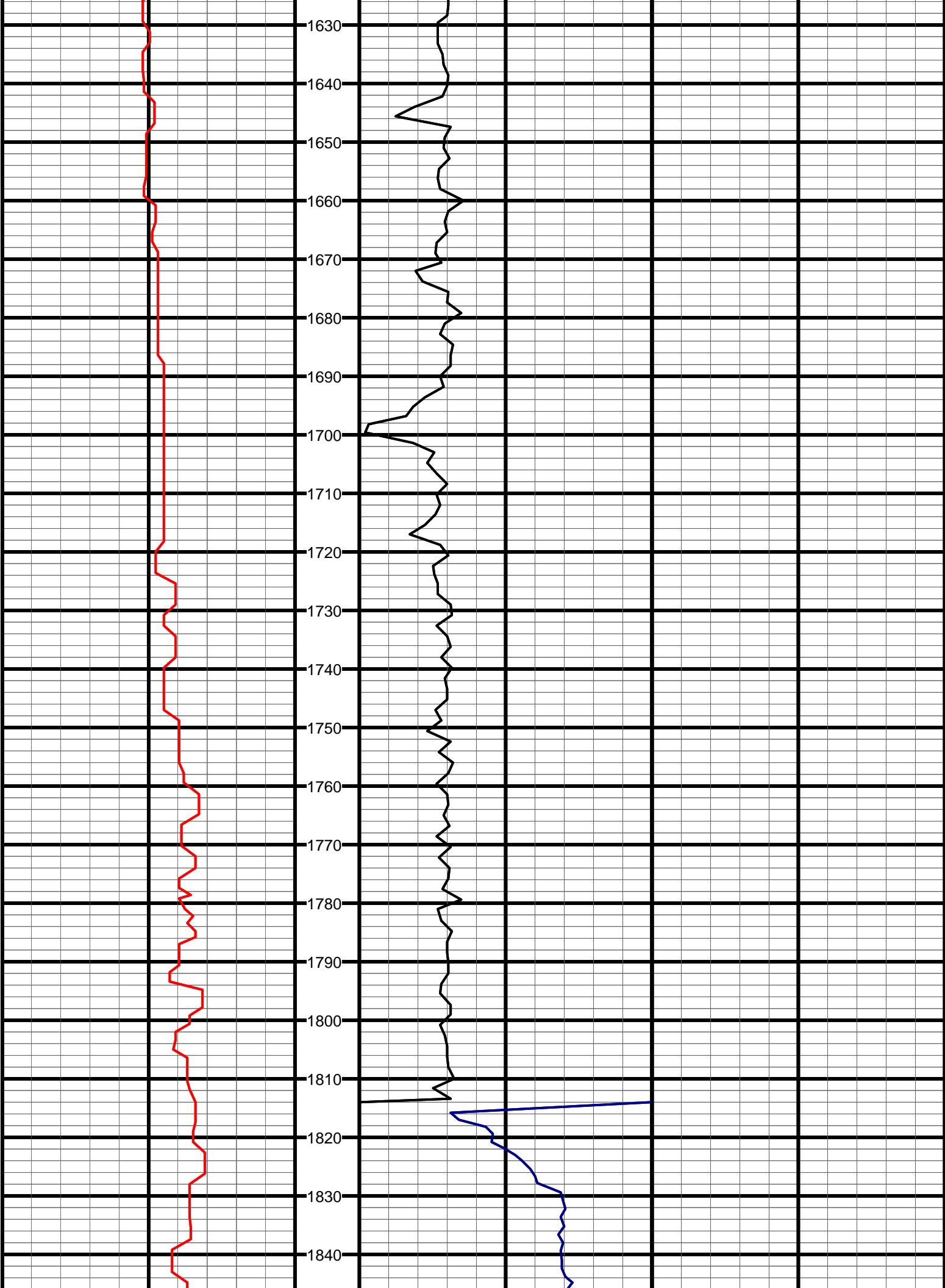
Tool Run Data	Run #1	Run #2	Run #3	Run #4	Run #5
Tool S/N	150	150	150		
Cal Factor	3.994	3.994	2.319		
Gamma Offset	36	36	41		
Start Depth	899'	5,161'	6,365'		
Start Date	2/21/2013	2/23/2013	2/25/2013		
Start Time	22:00	02:00	01:30		
End Depth	5,161'	6,365'	10,271'		
End Date	2/22/2013	2/23/2013	2/26/2013		
End Time	15:00	14:00	18:00		

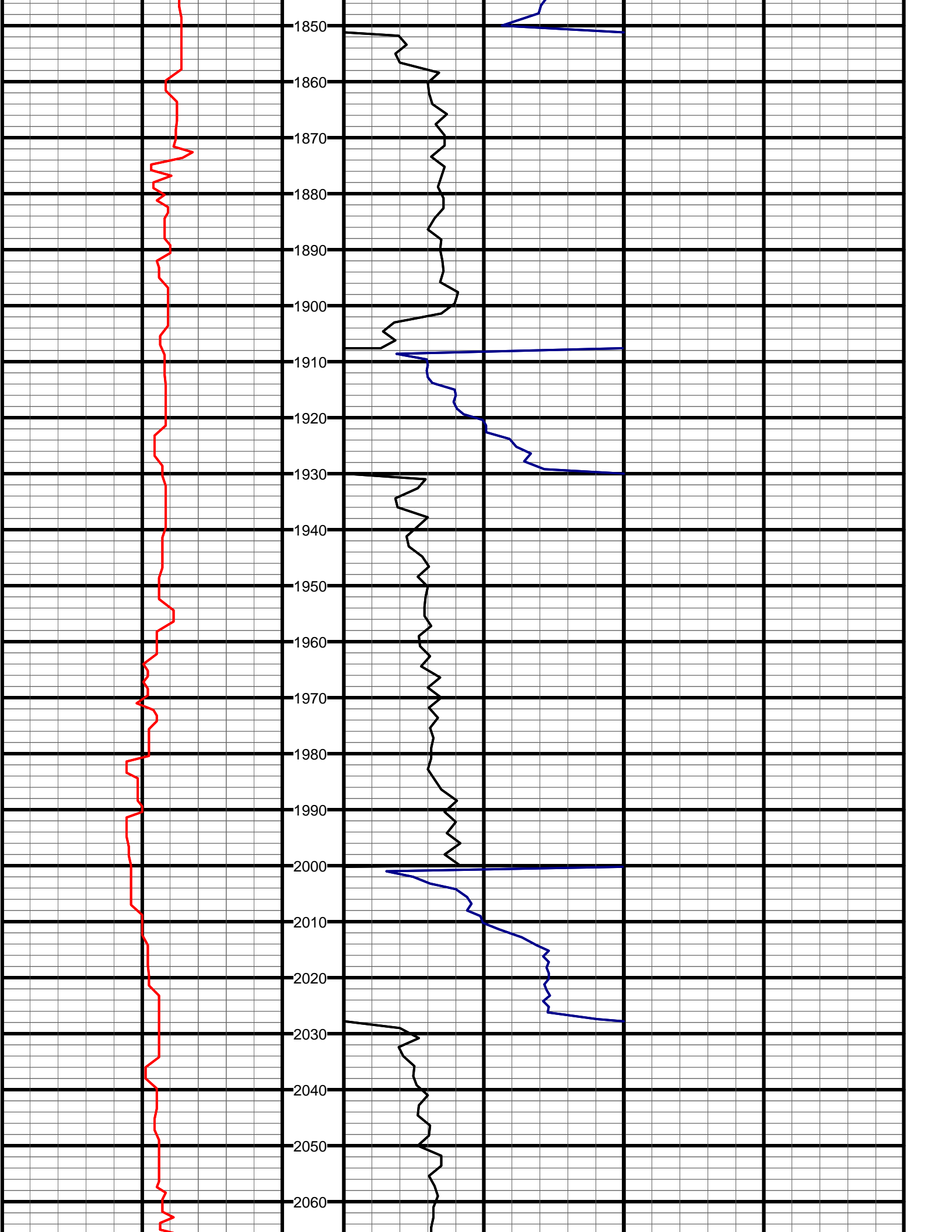


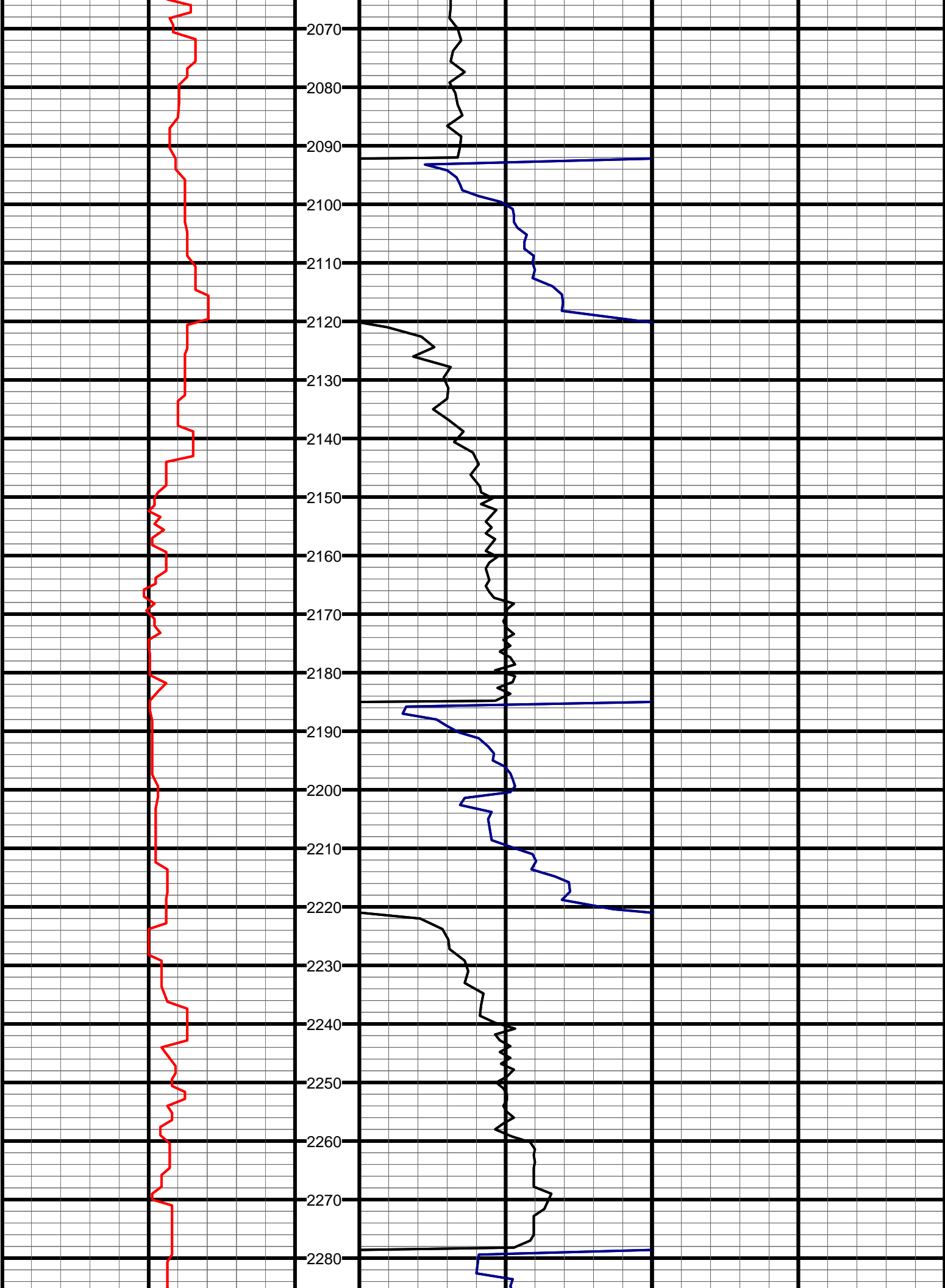


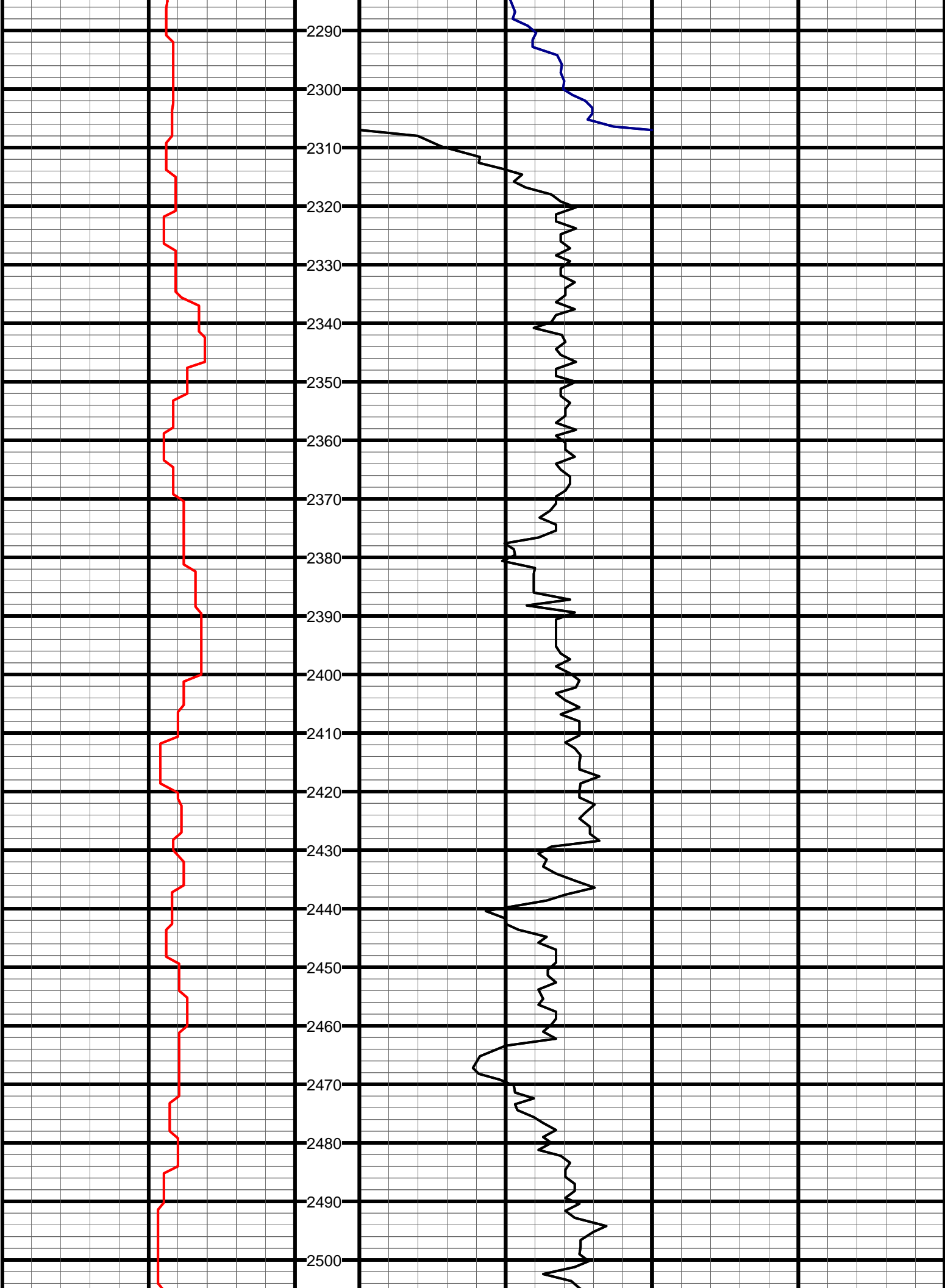


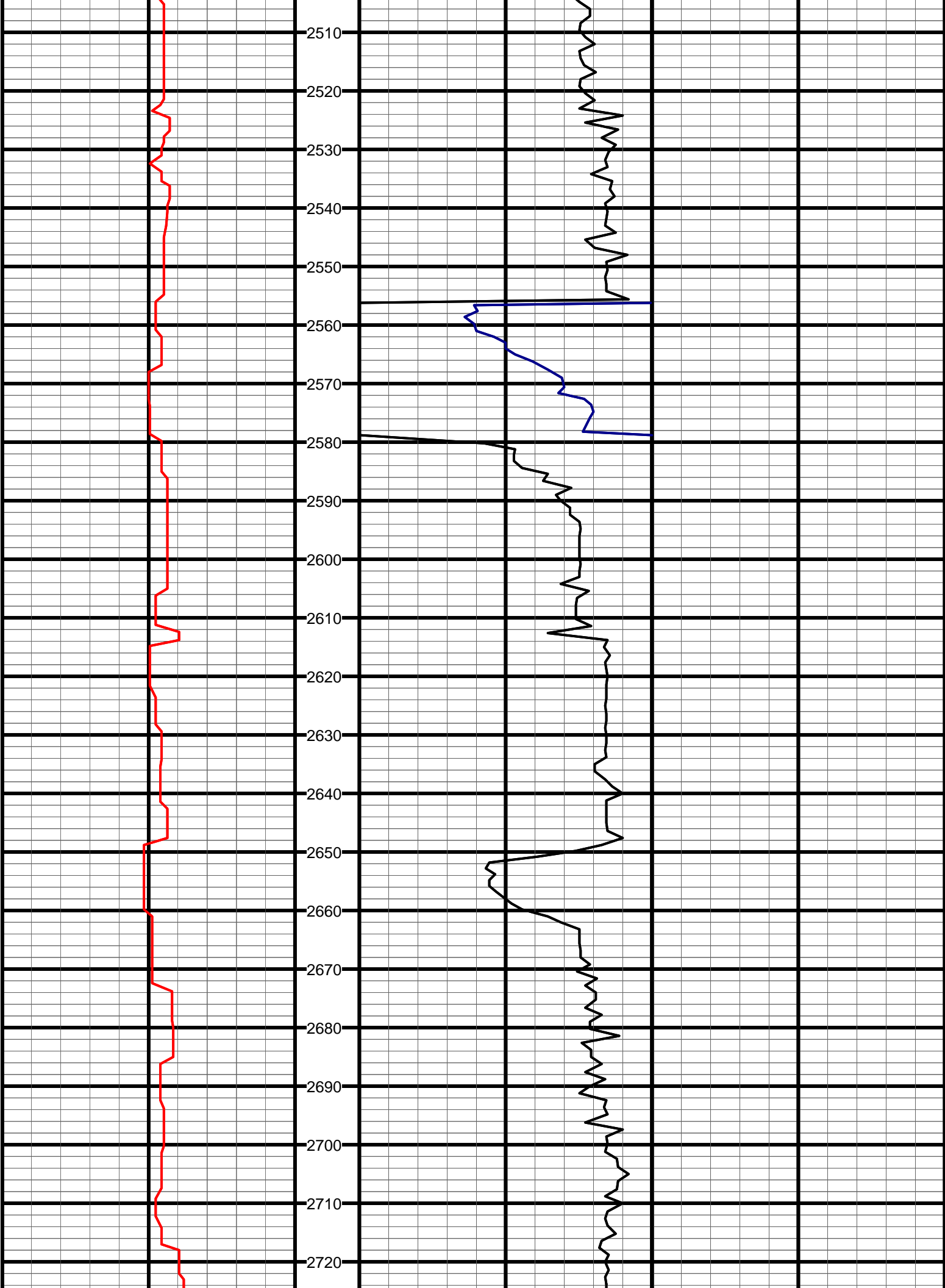




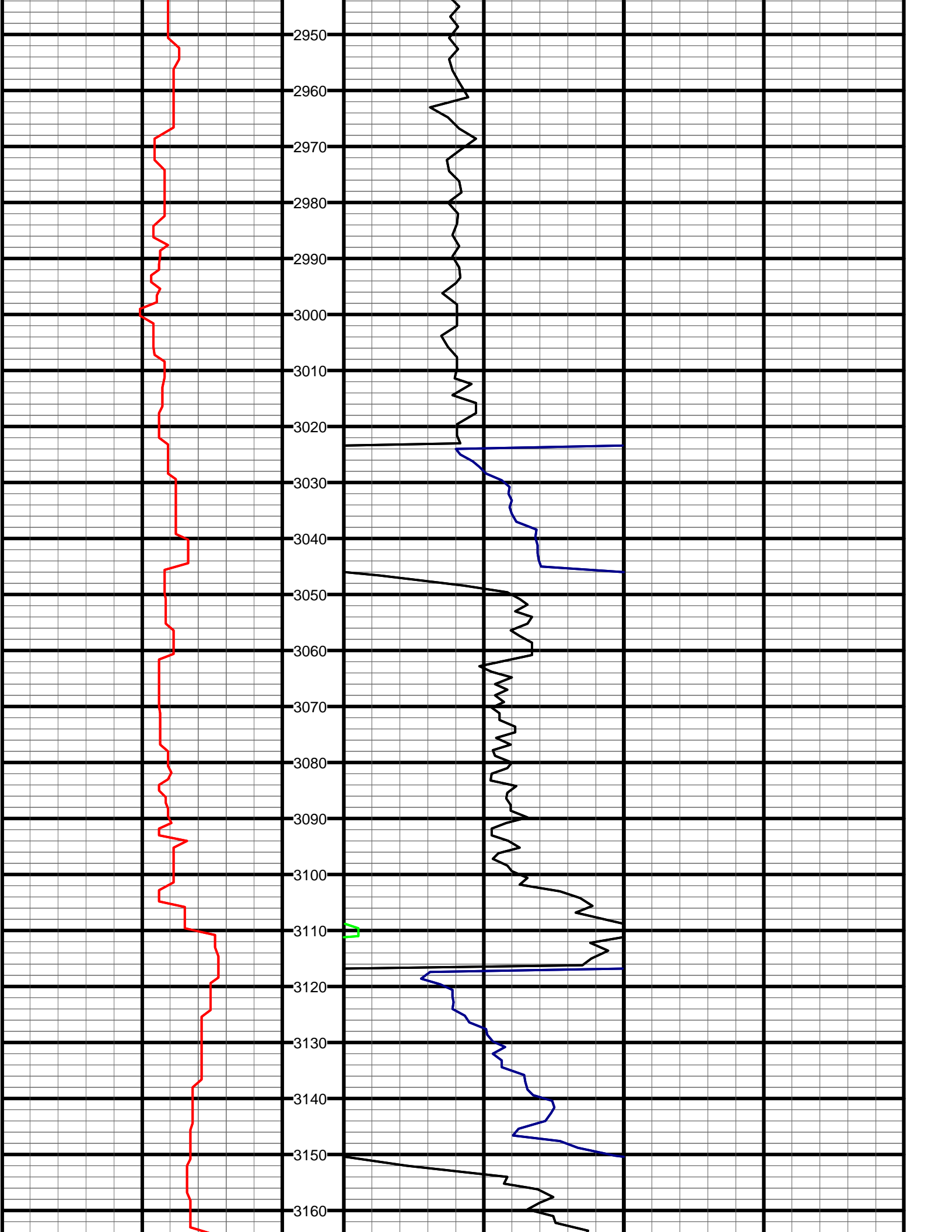


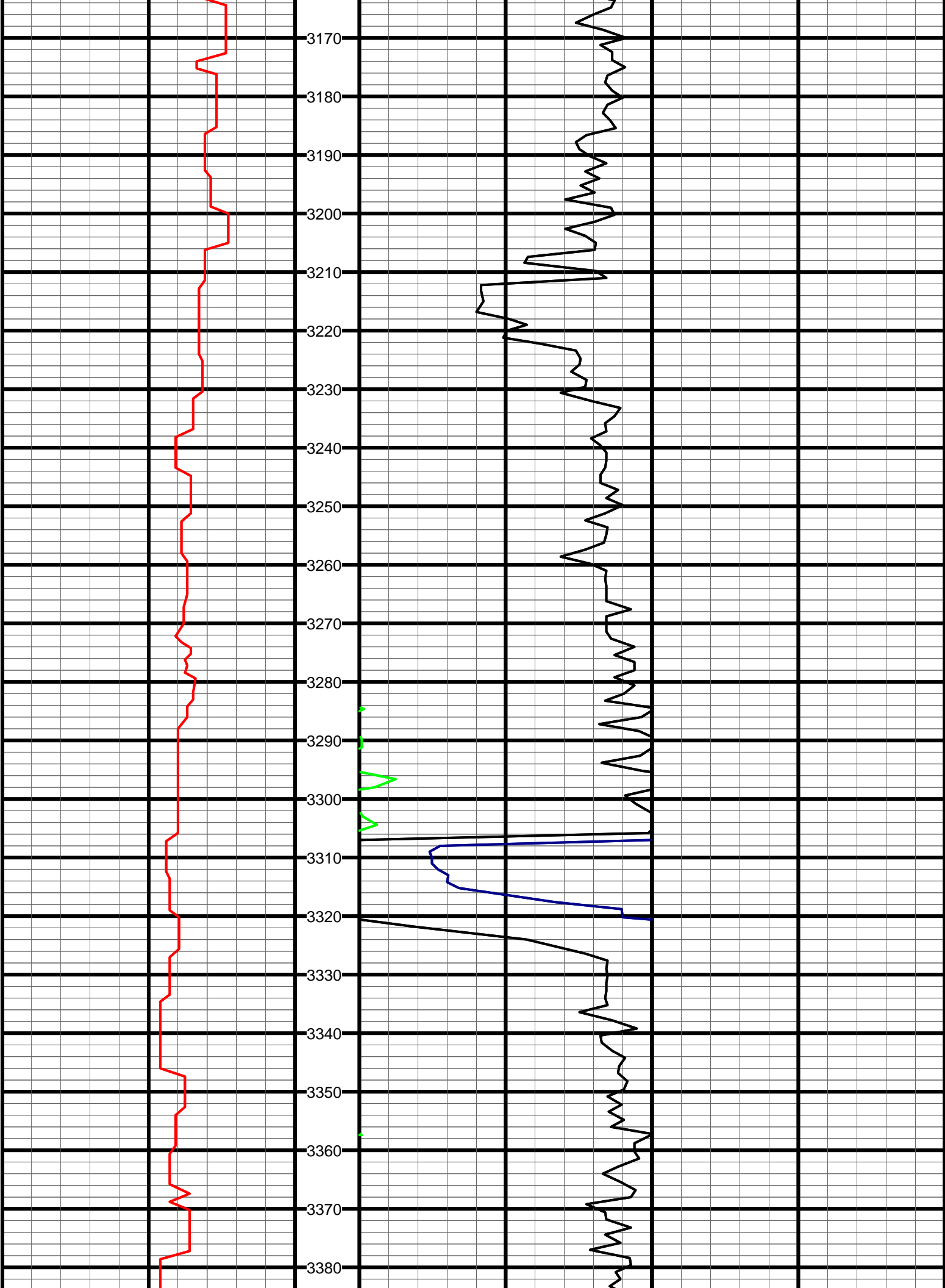


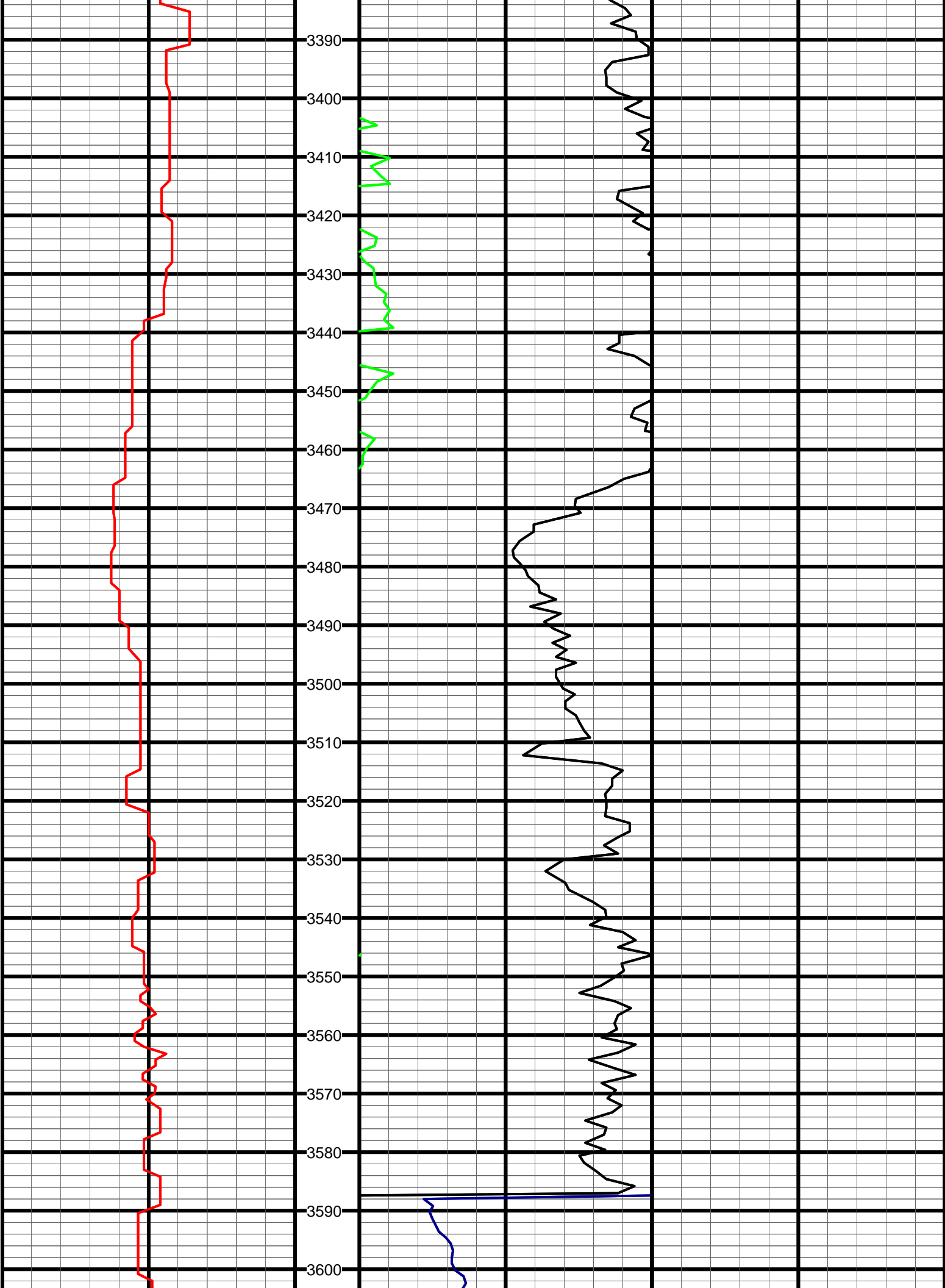


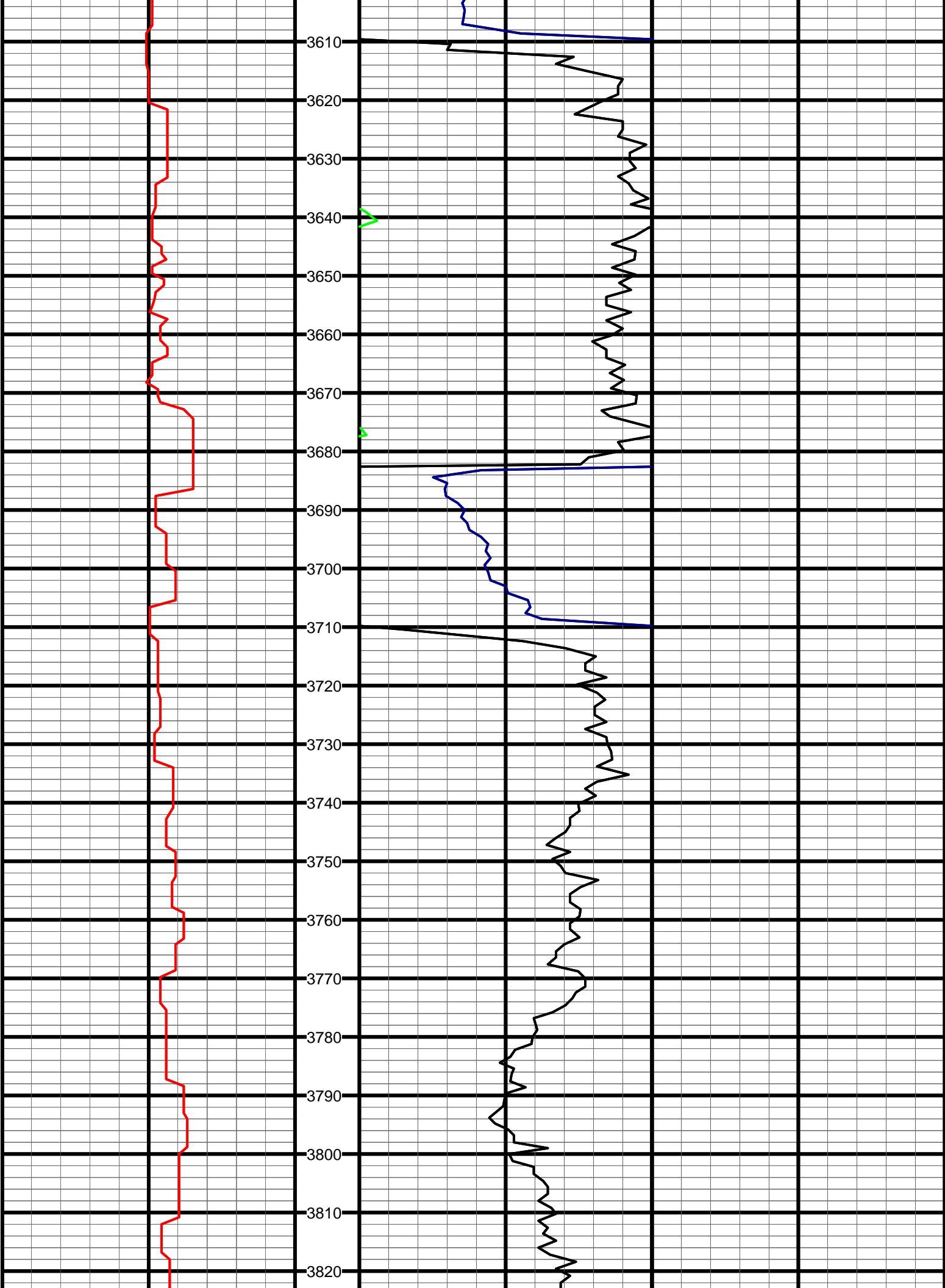


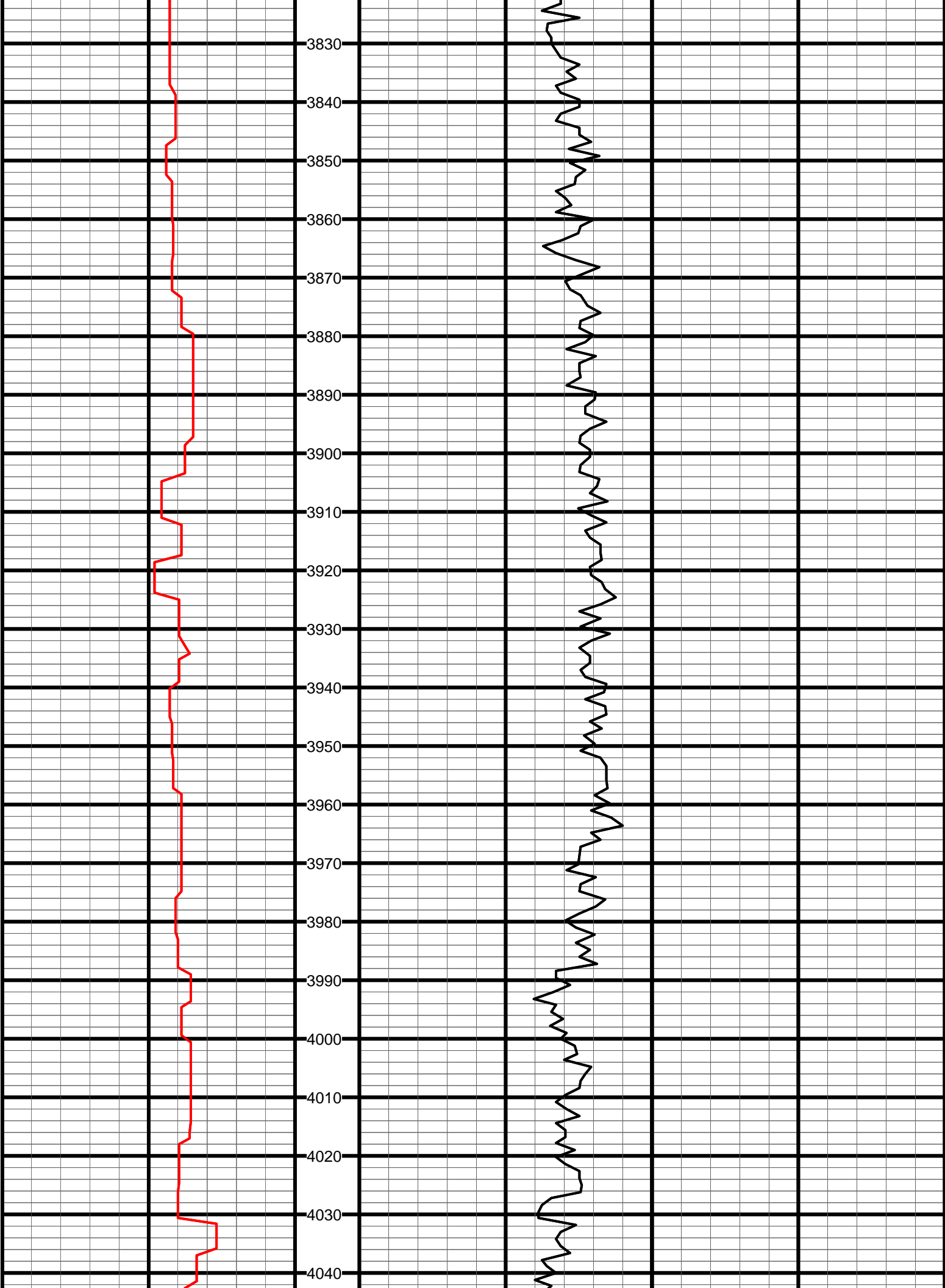


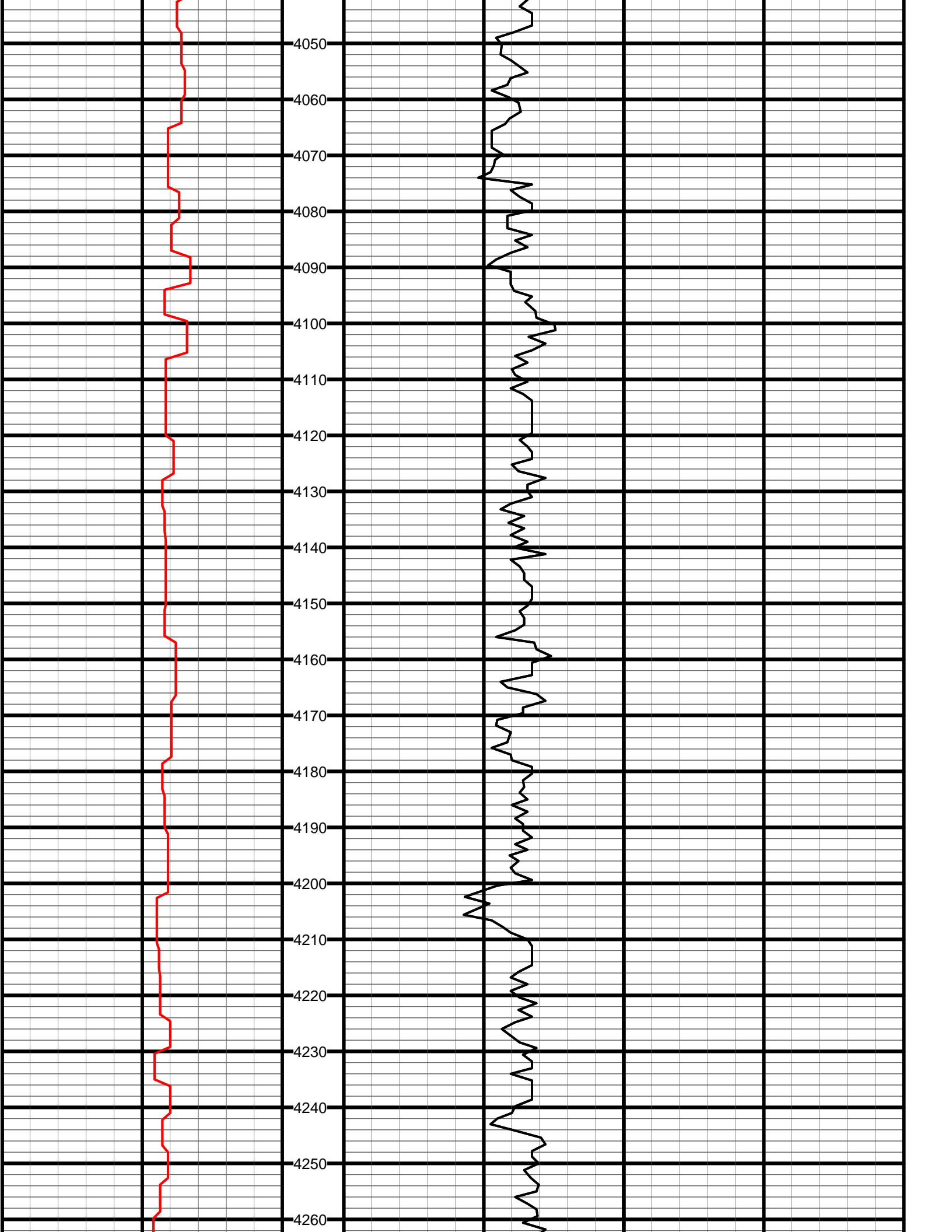


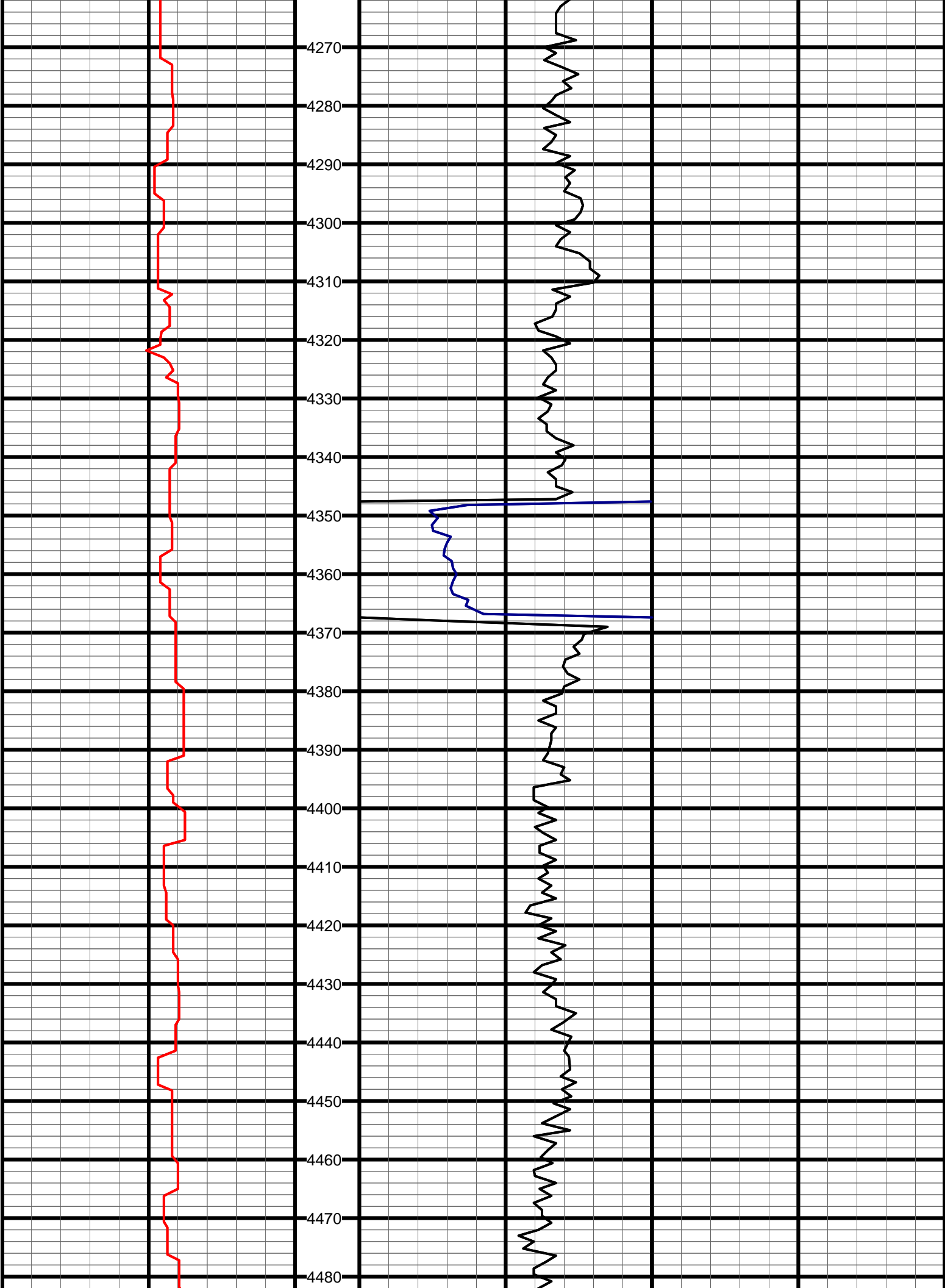


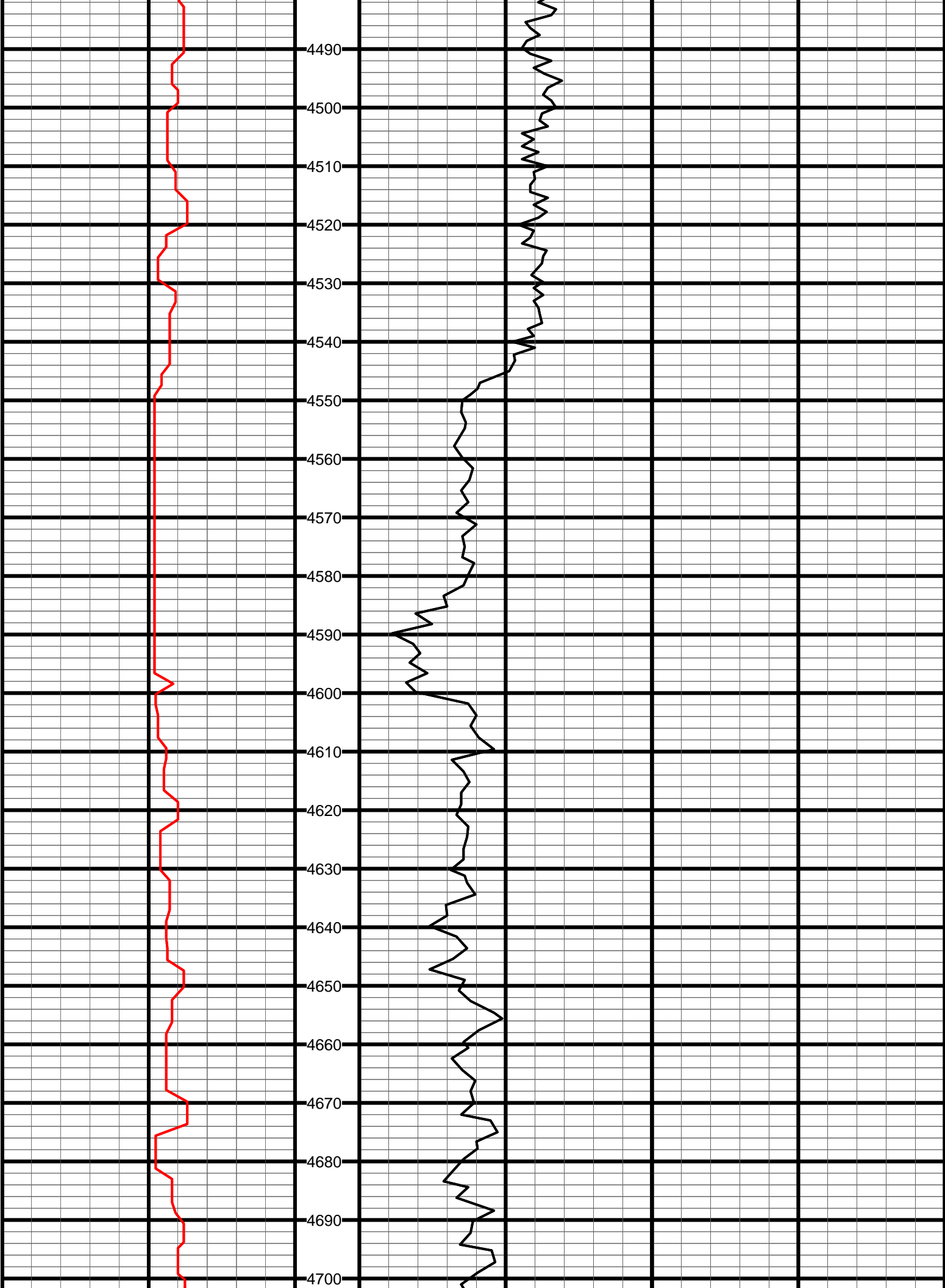




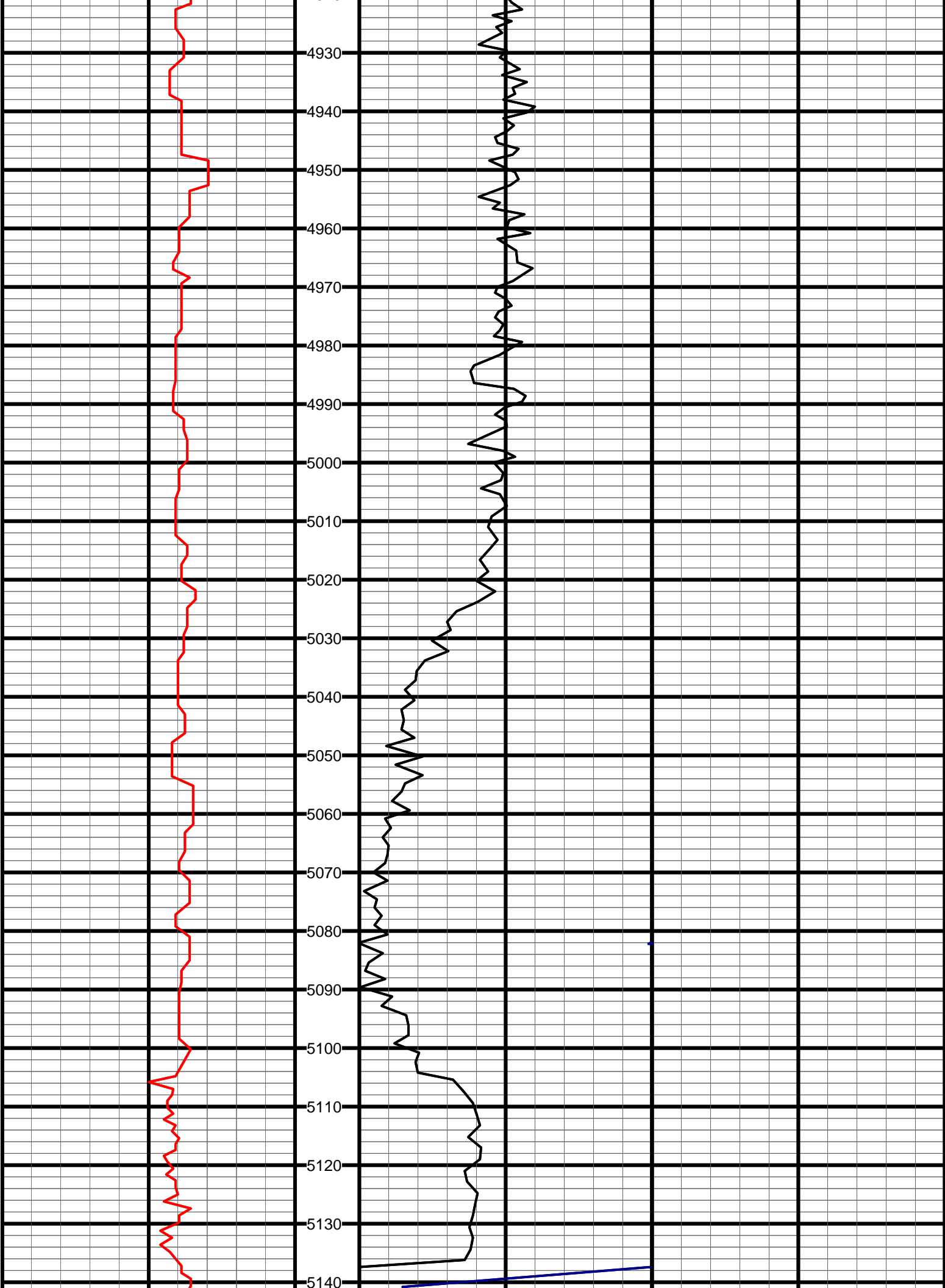


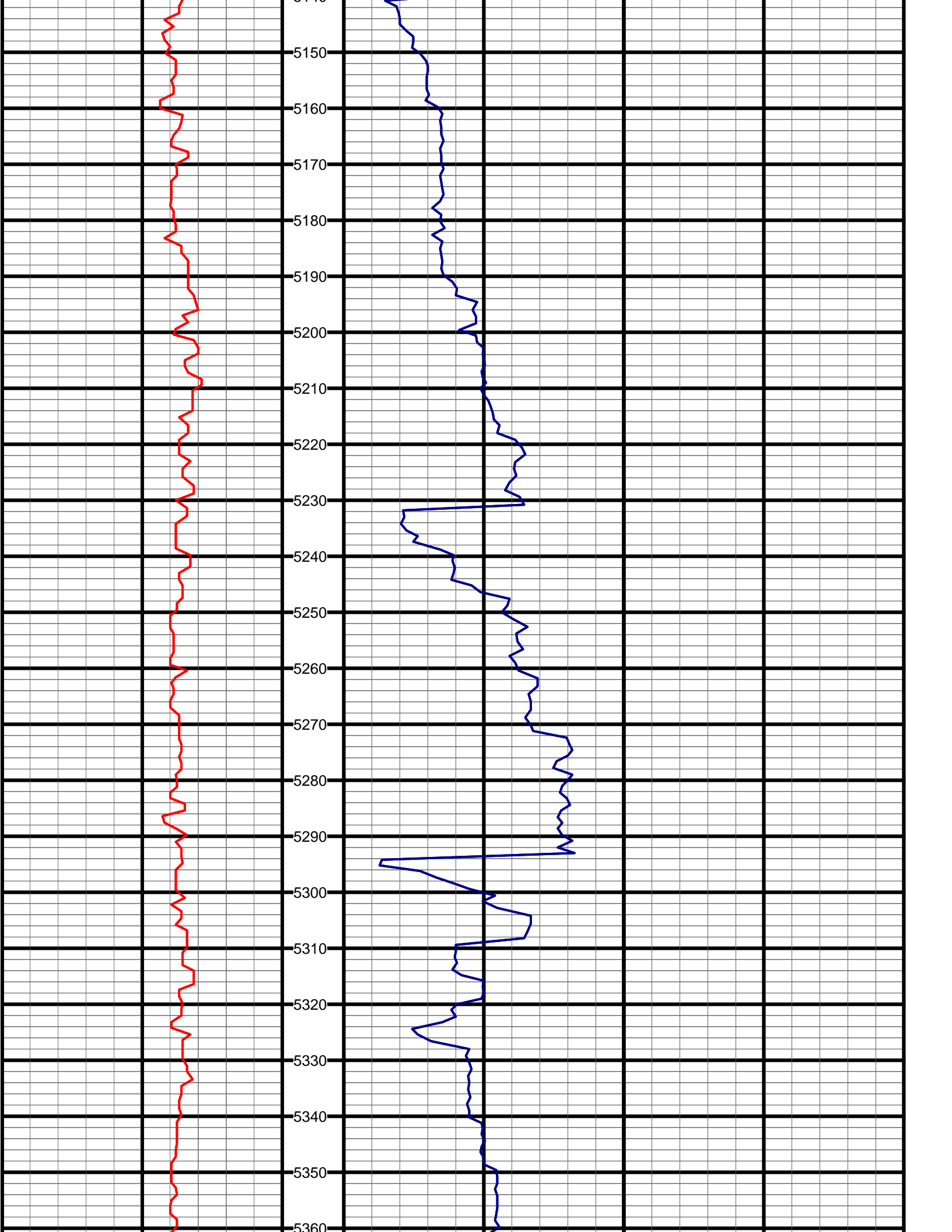


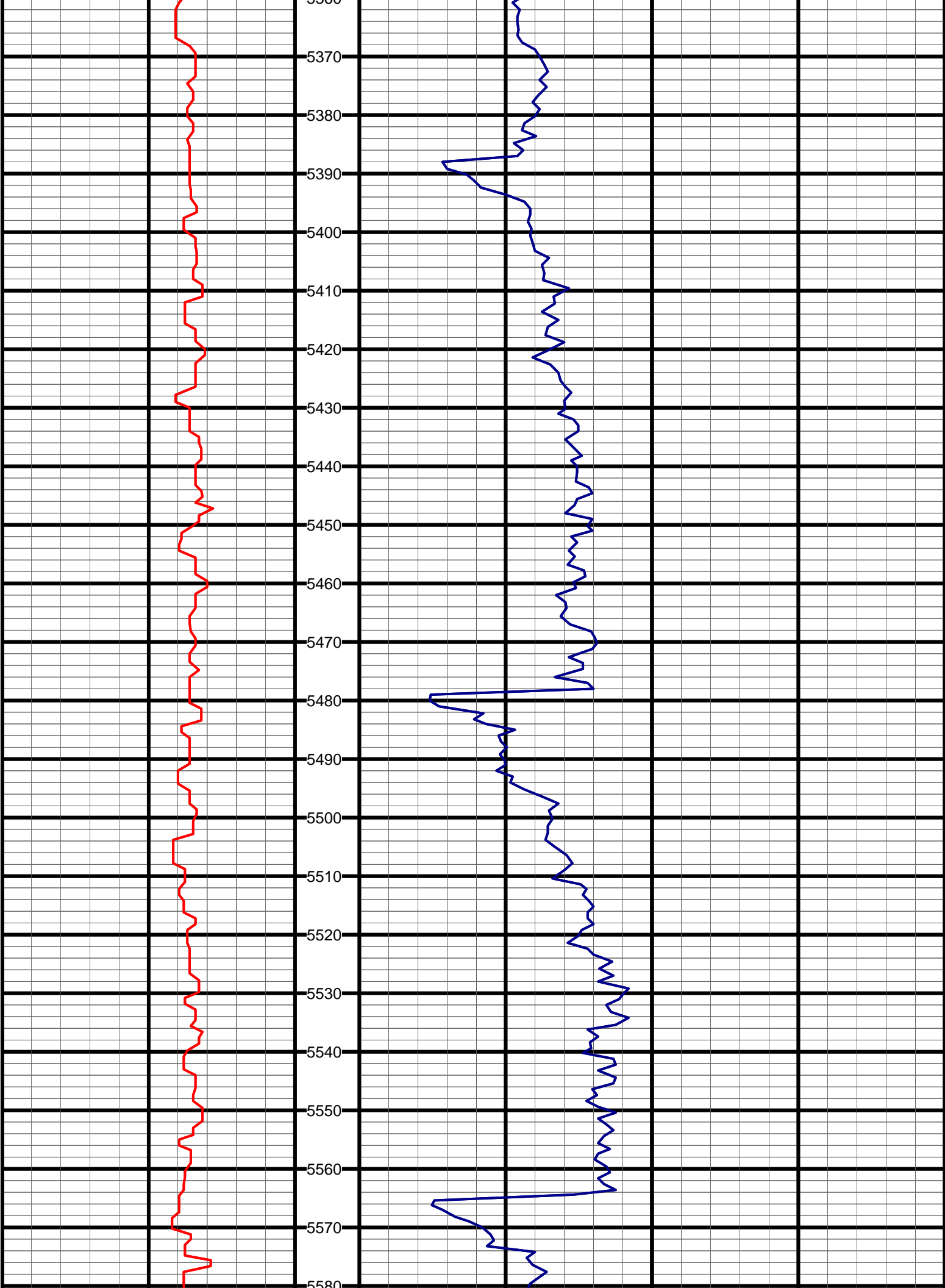


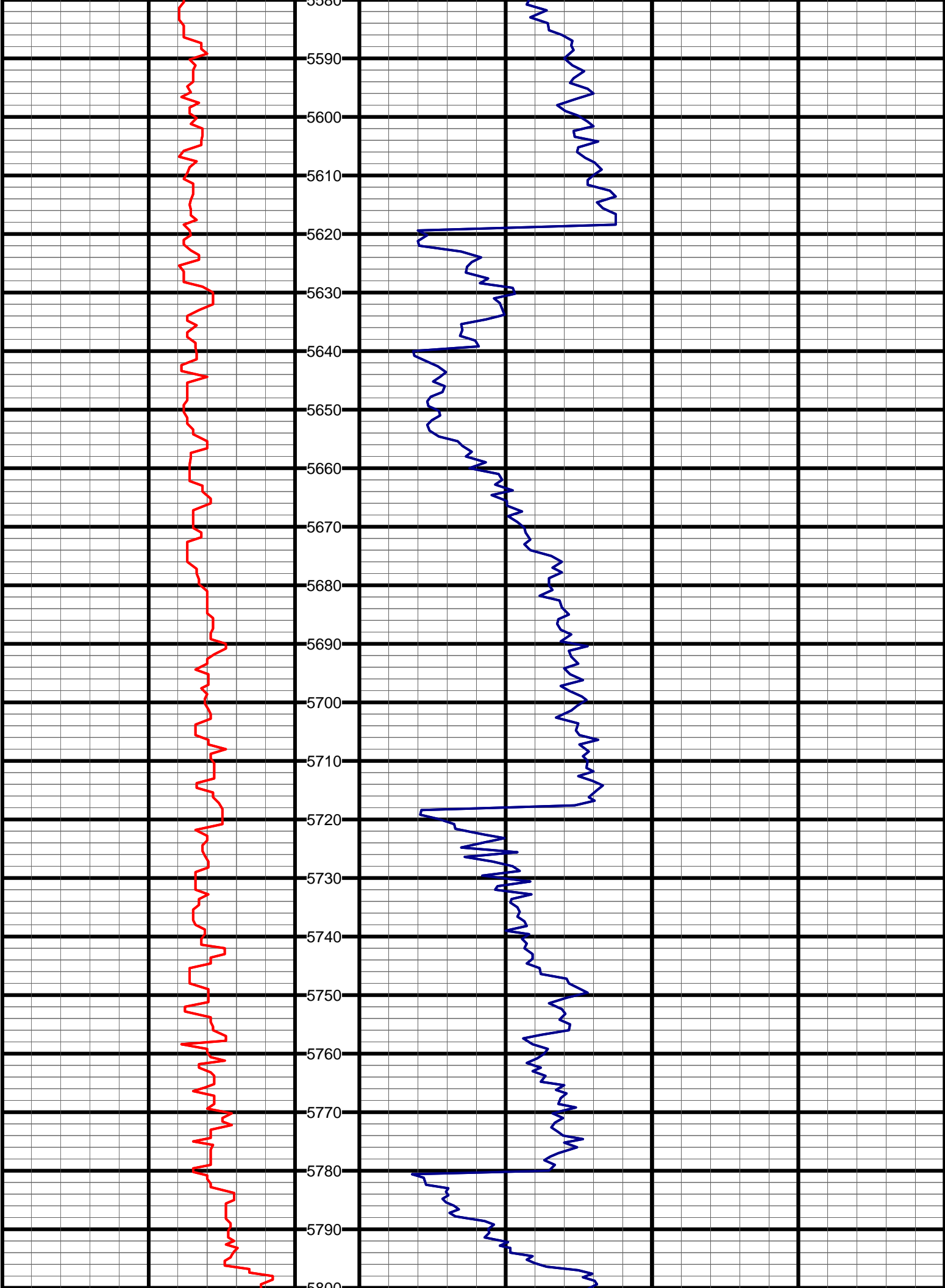


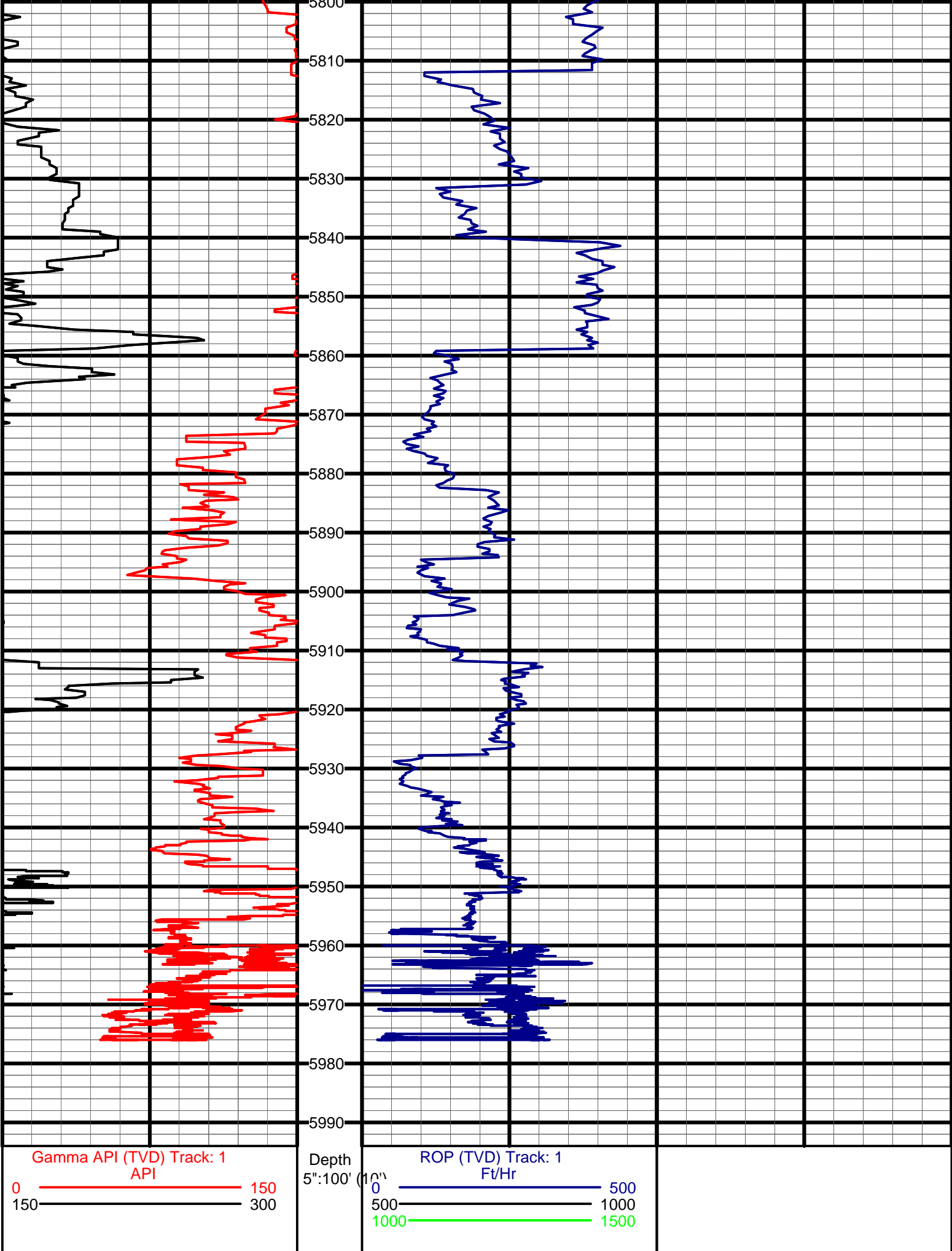














Timbro Federal LD18-74HN FINAL 1" TVD
(Scale: 1"=100' (100'))

Company: NOBLE ENERGY INC
Well: TIMBRO FEDERAL LD18-74HN
Field: WILDCAT
Well ID: 05-123-36263
Job Number: RM-13139
Location: LAT: 40° 44' 40.121 N / LONG: 103° 54' 15.020 W
Operator 1: CHRIS ABBOTT
Operator 2: TROY MARDESEN

State: COLORADO
County: WELD
Country: USA

Elev KB: 4917
Elev DF: 30
Elev GL: 4887

Comment 1:
Comment 2:
Comment 3:
Comment 4:
Comment 5:

Hole Data			Casing Record		
Size	From	To	Size	From	To
13 3/4"	0'	899'	9 5/8"	0'	892'
8 3/4"	899'	6,365'	7"	892'	6,355'
6 1/8"	6,365'	10,271'			

Tool Run Data	Run #1	Run #2	Run #3	Run #4	Run #5
Tool S/N	150	150	150		
Cal Factor	3.994	3.994	2.319		
Gamma Offset	36	36	41		
Start Depth	899'	5,161'	6,365'		
Start Date	2/21/2013	2/23/2013	2/25/2013		
Start Time	22:00	02:00	01:30		
End Depth	5,161'	6,365'	10,271'		
End Date	2/22/2103	2/23/2013	2/26/2013		
End Time	15:00	14:00	18:00		

