

## 1 of 2

**VEGETATION:**  
DRY LAND PASTURE

**SURFACE USE:**  
GRAZING

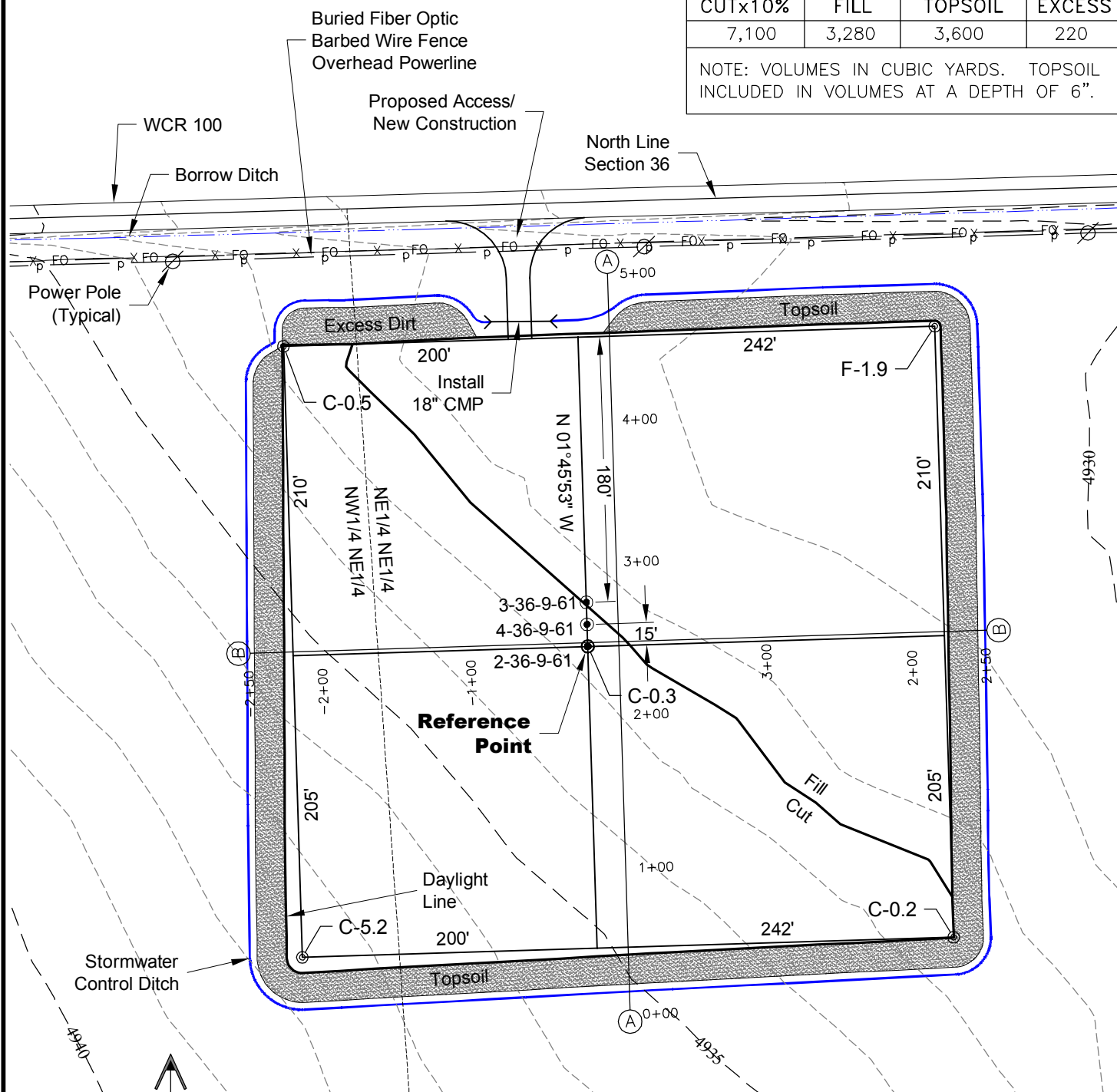
PAD 415'X442' ELEV= 4932.4'

DISTURBED AREA=5.7± ACRES

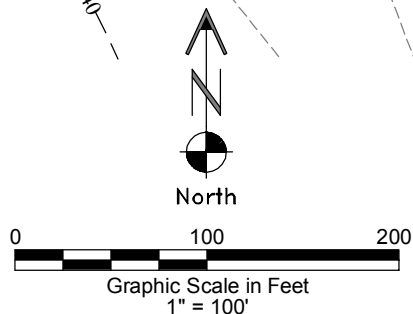
### ESTIMATED DIRT QUANTITIES

CUTx10%	FILL	TOPSOIL	EXCESS
7,100	3,280	3,600	220

NOTE: VOLUMES IN CUBIC YARDS. TOPSOIL INCLUDED IN VOLUMES AT A DEPTH OF 6".



**NOTE:**  
10% ALLOWANCE IS MADE FOR SOIL EXPANSION.



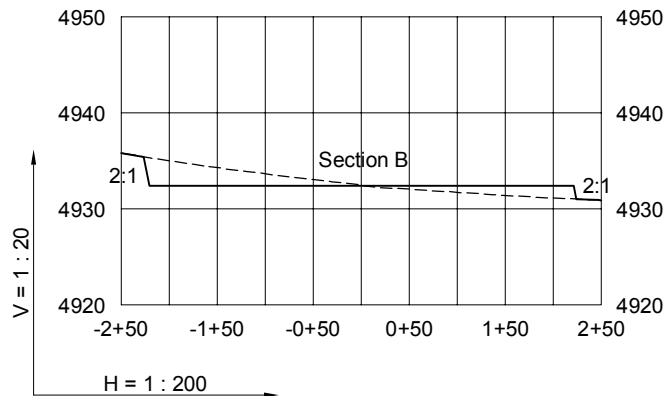
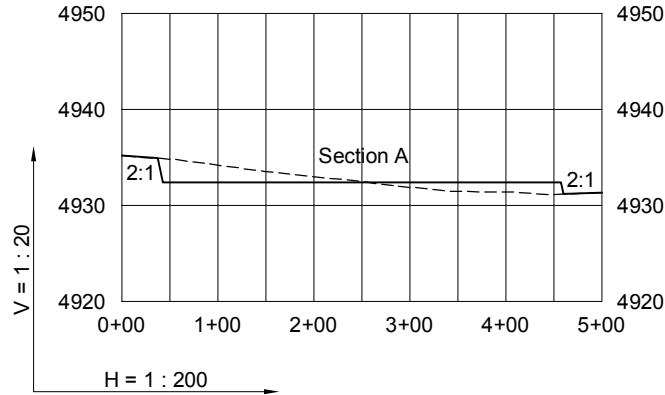
**LAND SURVEYING AND MAPPING**  
**LAFAYETTE - WINTER PARK**  
**Ph 303 666 0379 Fx 303 665 6320**

**CARRIZO NIOBRARA LLC**  
**STATE 2-36-9-61 PAD**

NE1/4 NE1/4 SECTION 36 T9N R61W  
6th PM WELD COUNTY COLORADO

# CONSTRUCTION LAYOUT DRAWING

2 of 2



6/13/13

----- Existing Ground  
 \_\_\_\_\_ Proposed Grade

**GEO SURV**

LAND SURVEYING AND MAPPING  
 LAFAYETTE - WINTER PARK  
 Ph 303 666 0379 Fx 303 665 6320

**CARRIZO NIOBRARA LLC**  
 STATE 2-36-9-61 PAD

**NE1/4 NE1/4 SECTION 36 T9N R61W**  
**6th PM WELD COUNTY COLORADO**