

PROPOSED LOCATION:  
D03 596 FRAC PAD &  
FRAC PIT

SEE TOPO "B"

PLATEAU

RIO BLANCO CO  
GARFIELD CO

T4S  
T5S

CR 215  
PARACHUTE 10.8 MI. +/-

# LEGEND:

 PROPOSED LOCATION



## Encana OIL & GAS (USA) INC.

D03 596 FRAC PAD & FRAC PIT  
SECTION 3, T5S, R96W, 6th P.M.  
NW 1/4 NW 1/4

SHEET 6 OF 8



Uintah Engineering & Land Surveying  
85 South 200 East Vernal, Utah 84078  
(435) 789-1017 \* FAX (435) 789-1813

ACCESS ROAD  
MAP

10 15 12  
MONTH DAY YEAR

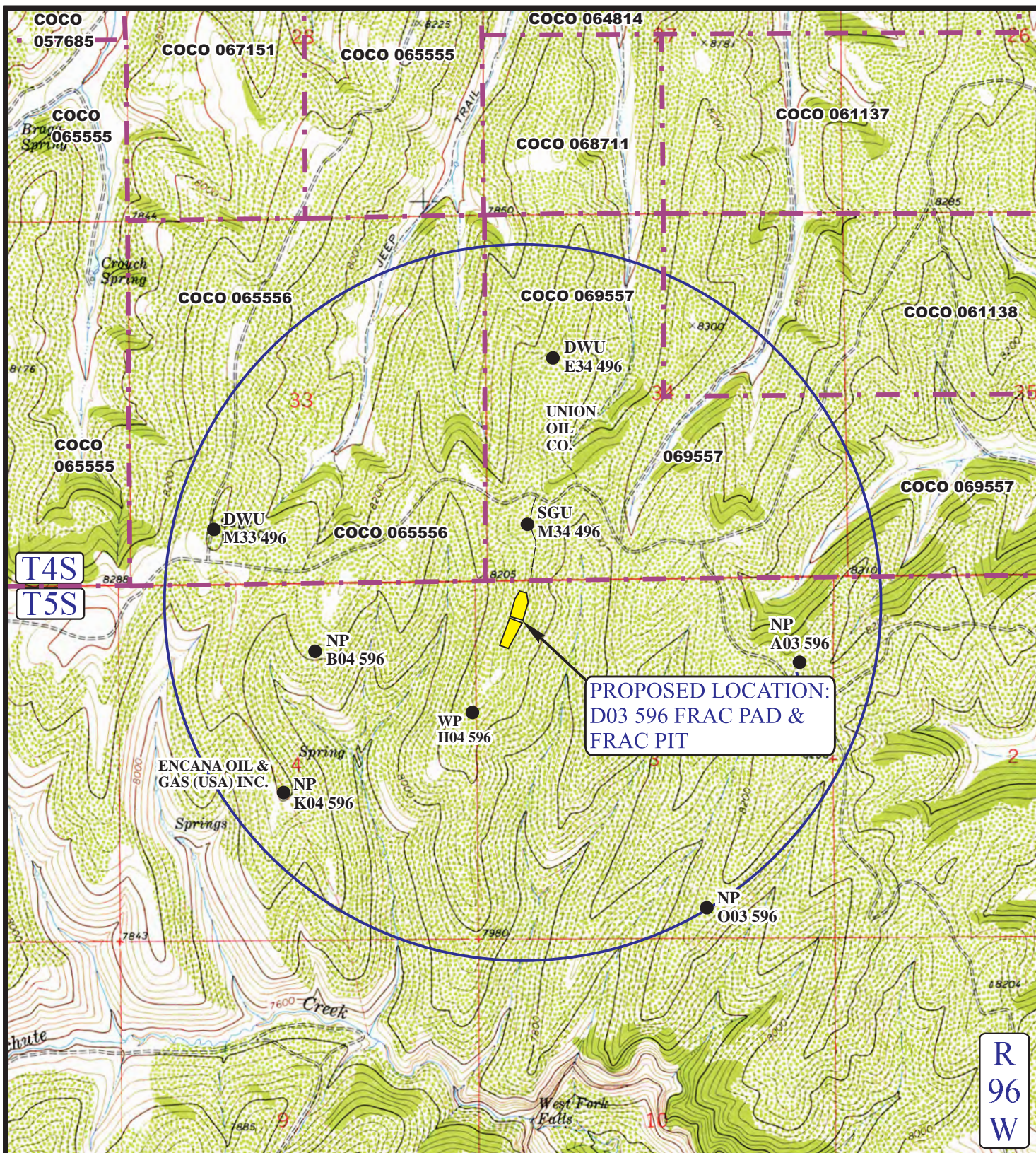
SCALE: 1:100,000 DRAWN BY: J.L.G. REV: 06-24-13 J.L.H.











## LEGEND:

- DISPOSAL WELLS
- PRODUCING WELLS
- SHUT IN WELLS
- ABANDONED WELLS
- TEMPORARILY ABANDONED



Encana OIL & GAS (USA) INC.

D03 596 FRAC PAD & FRAC PIT  
SECTION 3, T5S, R96W, 6th P.M.

NW 1/4 NW 1/4

SHEET 8 OF 8



**Uintah Engineering & Land Surveying**  
85 South 200 East Vernal, Utah 84078  
(435) 789-1017 \* FAX (435) 789-1813

**TOPOGRAPHIC  
MAP**

**10 15 12**  
MONTH DAY YEAR

SCALE: 1" = 2000' DRAWN BY: J.L.G. REV: 06-24-13 J.L.H.





Encana OIL & GAS (USA) INC.  
D03 596 FRAC PAD & FRAC PIT  
SECTION 3, T5S, R96W, 6<sup>th</sup> P.M.

PROCEED IN A PROCEED IN A NORTHWESTERLY DIRECTION FROM PARACHUTE, COLORADO ALONG COUNTY ROAD 215 APPROXIMATELY 10.8 MILES TO THE JUNCTION OF THIS ROAD AND AN EXISTING ROAD TO THE NORTHWEST; TURN LEFT AND PROCEED IN A NORTHWESTERLY DIRECTION APPROXIMATELY 10.0 MILES TO THE JUNCTION OF THIS ROAD AND AN EXISTING ROAD TO THE SOUTHWEST; TURN LEFT AND PROCEED IN A SOUTHWESTERLY, THEN NORTHWESTERLY, THEN SOUTHWESTERLY, THEN NORTHWESTERLY DIRECTION APPROXIMATELY 3.2 MILES TO THE JUNCTION OF THIS ROAD AND AN EXISTING ROAD TO THE SOUTH; TURN LEFT AND PROCEED IN A SOUTHERLY DIRECTION APPROXIMATELY 0.3 MILES TO THE BEGINNING OF THE PROPOSED ACCESS TO SOUTH; FOLLOW ROAD FLAGS IN A SOUTHERLY DIRECTION APPROXIMATELY 133' TO THE PROPOSED LOCATION.

TOTAL DISTANCE FROM PARACHUTE, COLORADO TO THE PROPOSED LOCATION IS APPROXIMATELY 24.3 MILES.