

LEGEND:

 PROPOSED LOCATION



Encana OIL & GAS (USA) INC.

D03 596 FRAC PAD & FRAC PIT
SECTION 3, T5S, R96W, 6th P.M.
NW 1/4 NW 1/4

SHEET 6 OF 8



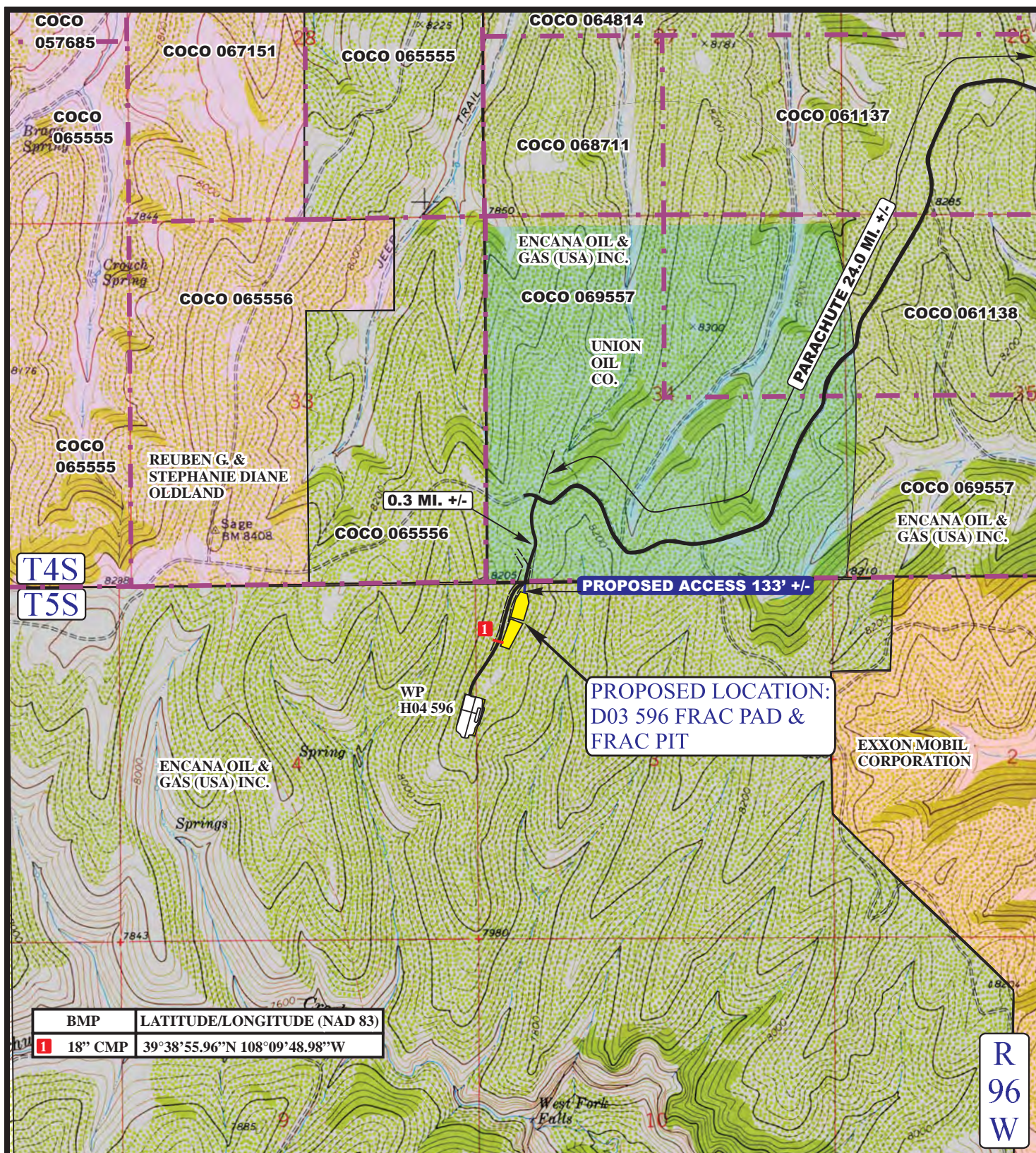
Uintah Engineering & Land Surveying
85 South 200 East Vernal, Utah 84078
(435) 789-1017 * FAX (435) 789-1813

ACCESS ROAD
MAP

10 15 12
MONTH DAY YEAR



SCALE: 1:100,000 DRAWN BY: J.L.G. REV: 06-24-13 J.L.H.



BMP	LATITUDE/LONGITUDE (NAD 83)
1 18" CMP	39°38'55.96"N 108°09'48.98"W

LEGEND:

	EXISTING ROAD
	PROPOSED ACCESS
1	18" CMP REQUIRED



Encana OIL & GAS (USA) INC.

D03 596 FRAC PAD & FRAC PIT
SECTION 3, T5S, R96W, 6th P.M.
NW 1/4 NW 1/4

SHEET 7 OF 8



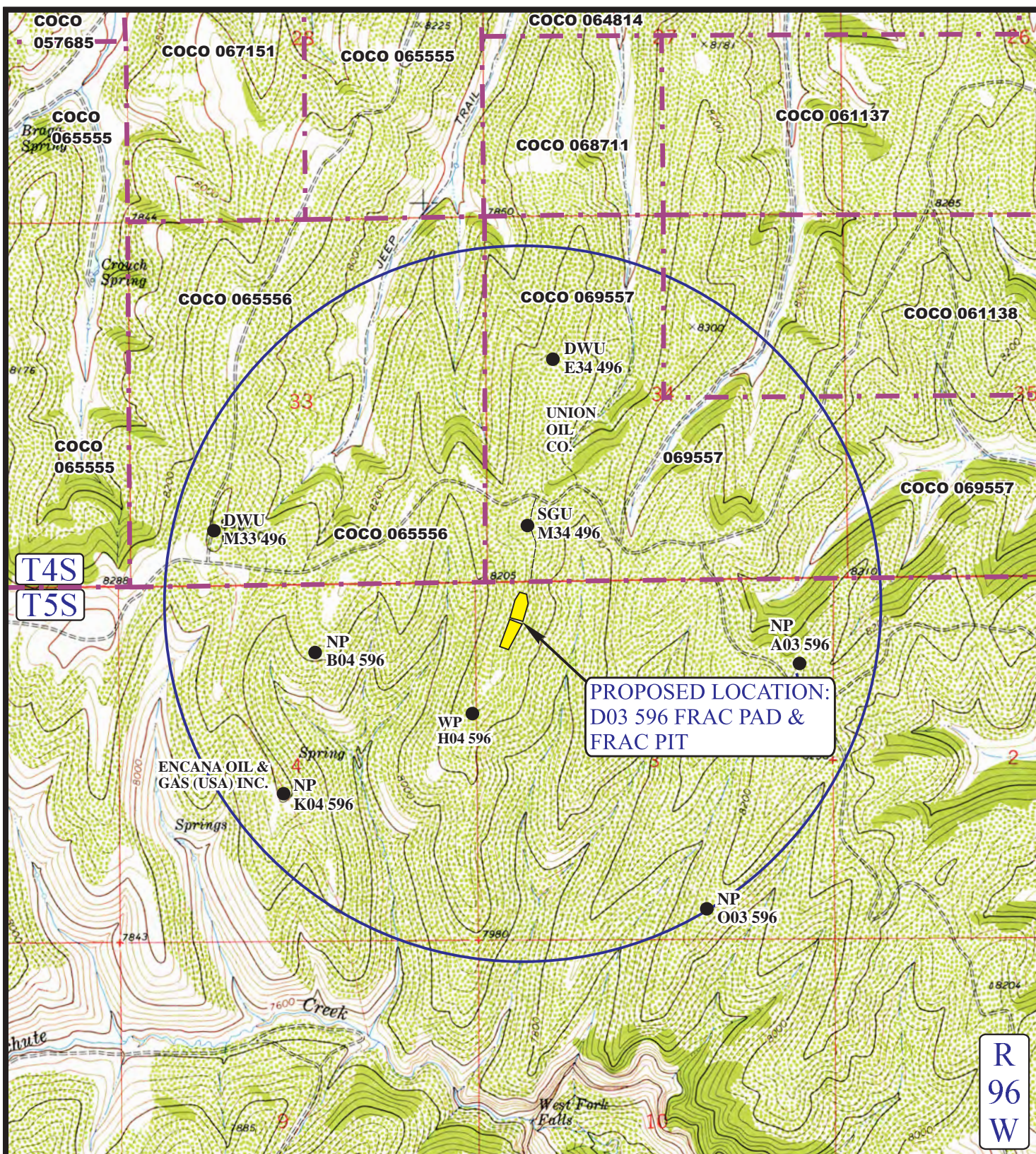
Uintah Engineering & Land Surveying
85 South 200 East Vernal, Utah 84078
(435) 789-1017 * FAX (435) 789-1813

**ACCESS ROAD
MAP**

10 **15** **12**
MONTH DAY YEAR

SCALE: 1" = 2000' DRAWN BY: J.L.G. REV: 06-24-13 J.L.H.

B
TOPO



LEGEND:

- DISPOSAL WELLS
- PRODUCING WELLS
- SHUT IN WELLS
- ABANDONED WELLS
- TEMPORARILY ABANDONED



Encana OIL & GAS (USA) INC.

D03 596 FRAC PAD & FRAC PIT
SECTION 3, T5S, R96W, 6th P.M.

NW 1/4 NW 1/4

SHEET 8 OF 8



Uintah Engineering & Land Surveying
85 South 200 East Vernal, Utah 84078
(435) 789-1017 * FAX (435) 789-1813

**TOPOGRAPHIC
MAP**

10 15 12
MONTH DAY YEAR

SCALE: 1" = 2000' DRAWN BY: J.L.G. REV: 06-24-13 J.L.H.

