

DP - DETENTION POND
ECB - EROSION CONTROL
BLANKET
LSd - LEVEL SPREADER
SCE - STABILIZED
CONSTRUCTION
ENTRANCE
SedR - SEDIMENT
RESERVOIR
SL - SLASH
ST - SEDIMENT TRAP
TB - TOE BERM
W - WATTLE

Total Pit Capacity
= 59,680 Bbls.±
Total Pit Volume
= 12,410 Cu. Yds

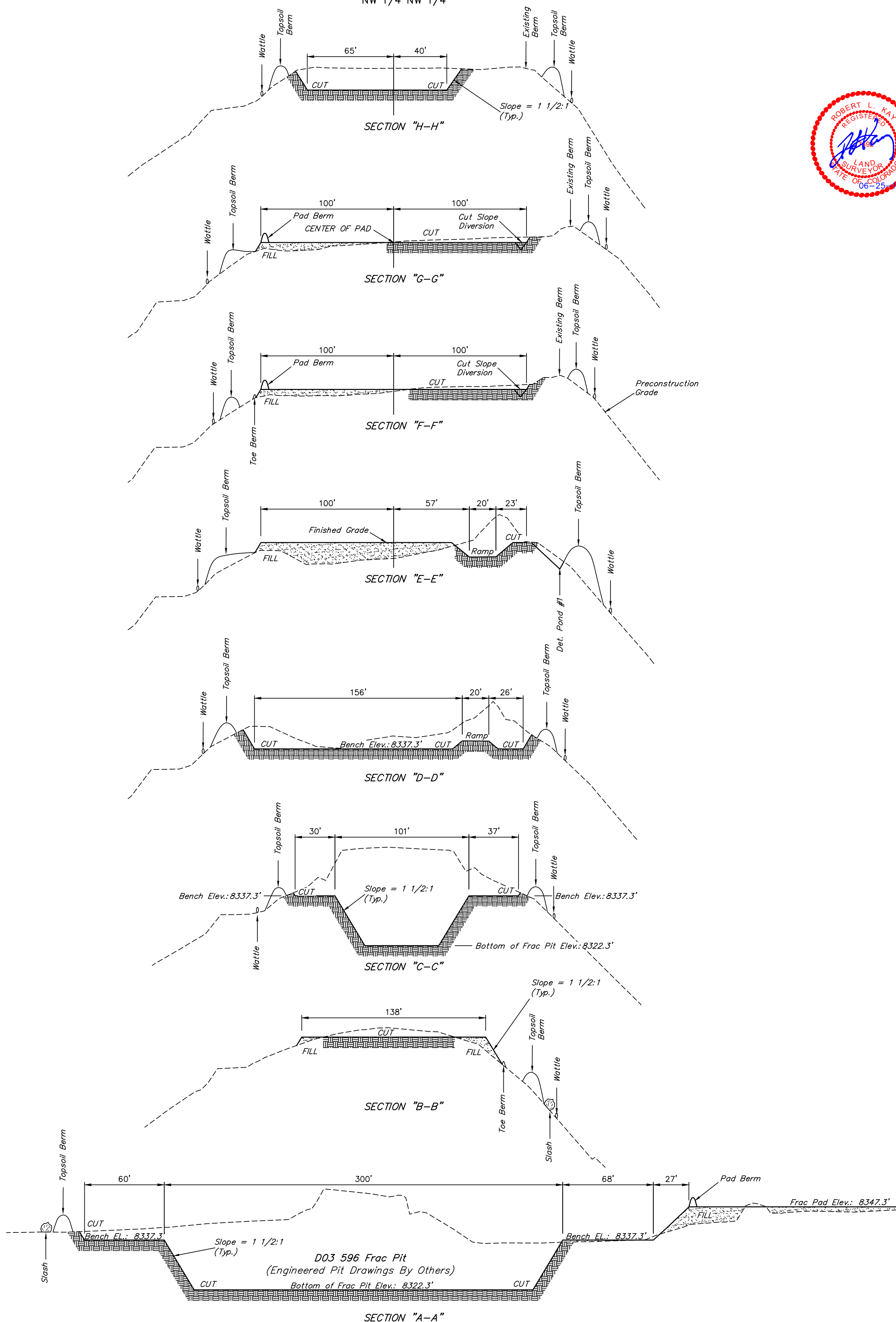
Elev. Ungraded Ground At D03 596 Frac Pad Loc. Stake = 8347.5'
FINISHED GRADE ELEV. AT D03 596 Frac Pad LOC. STAKE = 8347.3'

1" = 20'
X-Section
Scale
1" = 50'

DATE: 06-07-13
DRAWN BY: C.J.C.
REVISED 06-13-13 C.J.C.
REVISED 06-22-13 T.B.

Encana OIL & GAS (USA) INC.
CONSTRUCTION LAYOUT CROSS SECTIONS FOR
D03 596 FRAC PAD & FRAC PIT
SECTION 3, T5S, R96W, 6th P.M.
NW 1/4 NW 1/4

SHEET 2 of 8



APPROXIMATE YARDAGES

(6") Topsoil Stripping = 3,190 Cu. Yds.
Remaining Location = 27,220 Cu. Yds.
TOTAL CUT = 30,410 CU. YDS.
FILL = 3,310 CU. YDS.

EXCESS MATERIAL = 27,100 Cu. Yds.
Topsoil & Pit Backfill = 9,400 Cu. Yds.
(1/2 Pit Vol. - 6,210 Cu. Yds.)
EXCESS UNBALANCE = 17,700 Cu. Yds.
(After Interim Rehabilitation)

* NOTE:
FILL QUANTITY INCLUDES
5% FOR COMPACTION

Encana OIL & GAS (USA) INC.

PRODUCTION SCHEMATIC FOR

D03 596 FRAC PAD & FRAC PIT

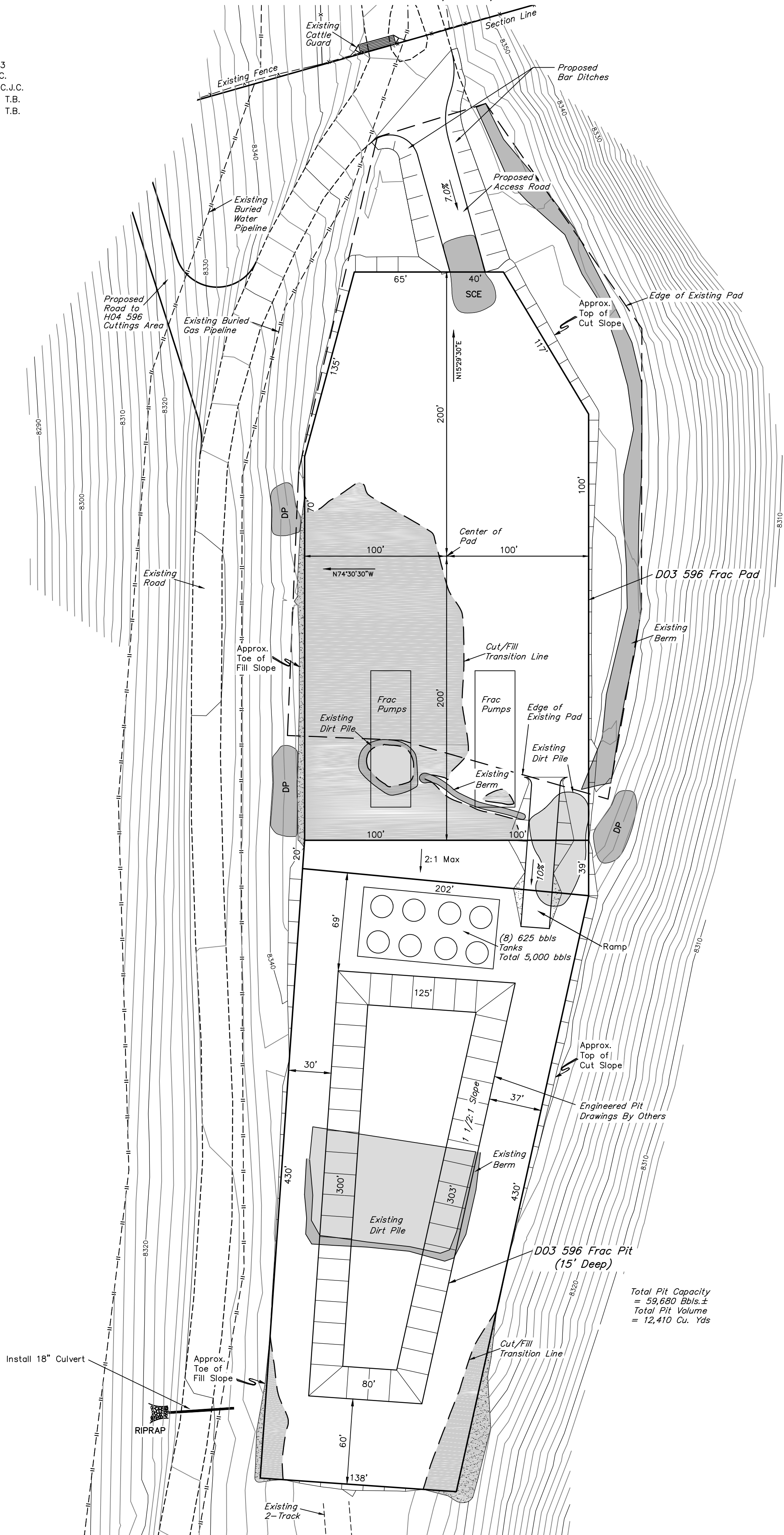
SECTION 3, T5S, R96W, 6th P.M.

NW 1/4 NW 1/4

SHEET 3 of 8



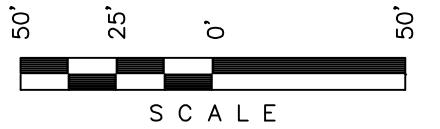
DATE: 06-07-13
DRAWN BY: C.J.C.
REVISED 06-13-13 C.J.C.
REVISED 06-22-13 T.B.
REVISED 06-28-13 T.B.



Total Pit Capacity
= 59,680 Bbls.±
Total Pit Volume
= 12,410 Cu. Yds

SWMP LEGEND:

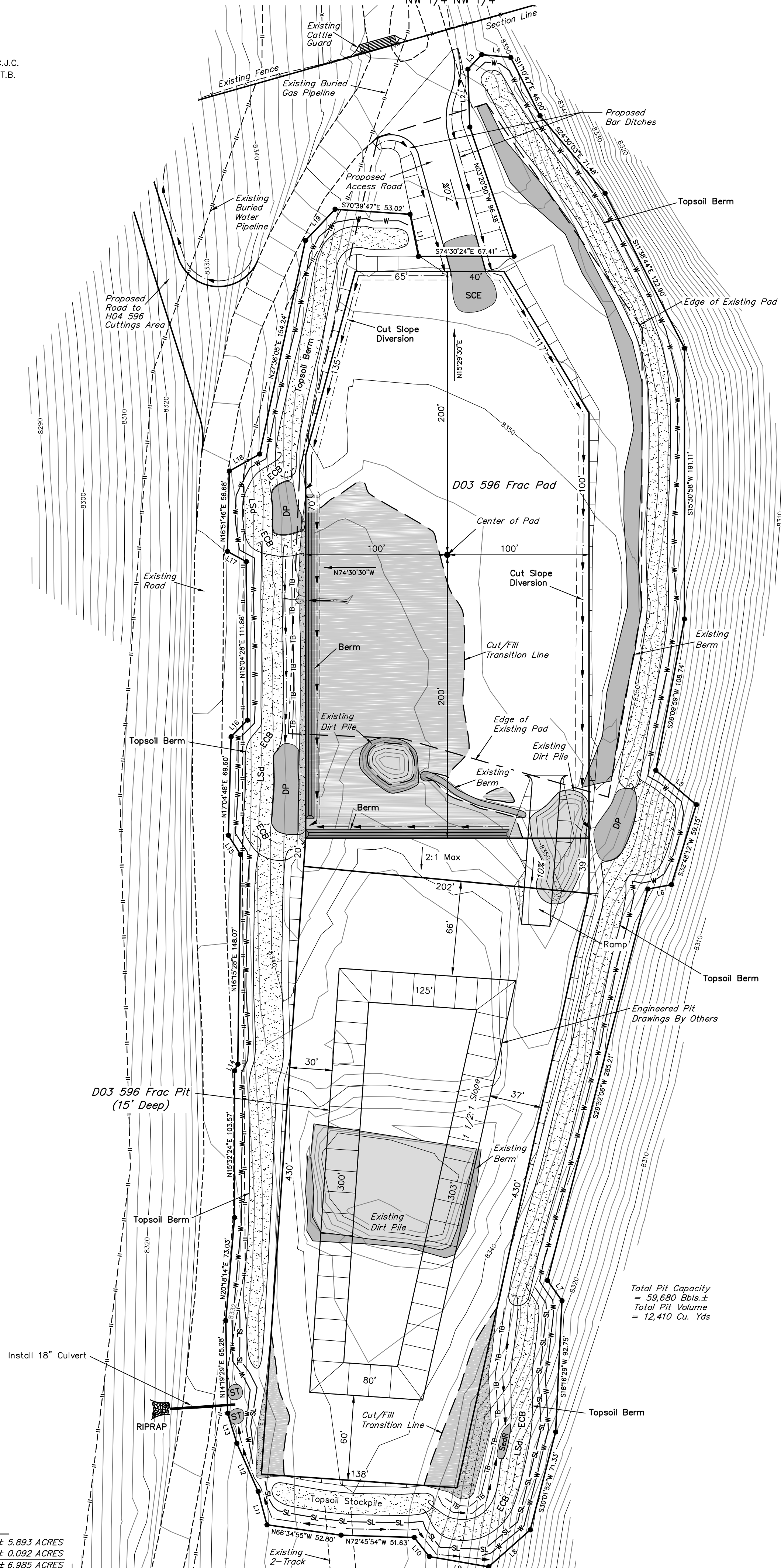
DP - DETENTION POND
ECB - EROSION CONTROL
BLANKET
LSd - LEVEL SPREADER
SCE - STABILIZED
CONSTRUCTION
ENTRANCE
SedR - SEDIMENT
RESERVOIR
SL - SLASH
ST - SEDIMENT TRAP
TB - TOE BERM
W - WATTLE



REVISED 06-13-13 C.J.C.
REVISED 06-22-13 T.B.



LINE	DIRECTION	LENGTH
L1	S04°11'15"W	30.22'
L2	N13°31'45"E	40.87'
L3	N58°57'28"E	14.19'
L4	S68°53'15"E	20.64'
L5	S34°12'05"E	37.45'
L6	N84°50'31"W	16.90'
L7	S19°59'06"E	17.65'
L8	S63°54'18"W	39.35'
L9	N64°39'10"W	42.51'
L10	N22°34'31"W	17.18'
L11	N00°36'36"E	24.37'
L12	N08°25'44"W	37.17'
L13	N01°21'21"W	22.23'
L14	N41°09'27"E	5.17'
L15	N16°56'38"W	16.09'
L16	N60°16'34"E	16.46'
L17	N45°55'45"W	15.23'
L18	N76°16'18"E	24.51'
L19	N58°57'28"E	30.35'



Total Pit Capacity
= 59,680 Bbls.±
Total Pit Volume
= 12,410 Cu. Yds

SWAMP LEGEND:

DP - DETENTION POND
ECB - EROSION CONTROL
BLANKET
LSd - LEVEL SPREADER
SCE - STABILIZED
CONSTRUCTION
ENTRANCE
SedR - SEDIMENT
RESERVOIR
SL - SLASH
ST - SEDIMENT TRAP
TB - TOE BERM
W - WATTLE

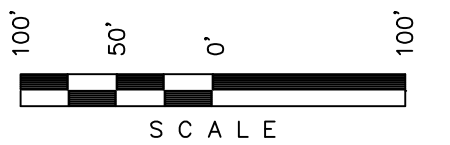
APPROXIMATE ACREAGE

APPROX. WELL DISTURBANCE = ± 5.893 ACRES
ACCESS ROAD DISTURBANCE = ± 0.092 ACRES
TOTAL = ± 6.985 ACRES

Encana OIL & GAS (USA) INC.

LOCATION DRAWING DETAIL FOR
D03 596 FRAC PAD & FRAC PIT
SECTION 3, T5S, R96W, 6th P.M.
NW 1/4 NW 1/4

SHEET 5a of 8



PROPOSED
CUTTINGS AREA FOR
H04 596

Section Line

1953 Brass Cap
0.2' High, E-W
Fence, Mound of
Stones, Steel Post



DATE: 06-07-13
DRAWN BY: C.J.C.
REVISED 06-13-13 C.J.C.
REVISED 06-22-13 T.B.

Existing Fence

RIPRAP

Proposed Road to
H04 596
Cuttings Area

Topsoil Berm

Existing Buried
Water Pipeline

Existing Cattle
Guard

Existing Fence

Existing Fence

Proposed Bar Ditches

Edge of Existing Pad

Proposed
Access Road

Topsoil Berm



NOTE 358
N08°E 360'
N14°E 360'
N12°30'E

Cut Slope Division

D03 596 Frac Pad

Center of Pad

Existing Buried
Gas Pipeline

Approx.
Toe of
Fill Slope

Berm

Existing Road

Cut Slope Division

Approx.
Top of
Cut Slope

ECB

DP

ECB

LSd

ECB

DP

ECB

LSd

ECB

DP

ECB

LSd

ECB

DP

ECB

LSd

ECB

DP

ECB

LSd

ECB

DP

ECB

LSd

ECB

DP

ECB

LSd

ECB

DP

ECB

LSd

ECB

DP

ECB

LSd

ECB

DP

ECB

LSd

ECB

DP

ECB

LSd

ECB

DP

ECB

LSd

ECB

DP

ECB

LSd

ECB

DP

ECB

Existing Dirt Pile

Edge of
Existing Pad

Existing Dirt Pile

Existing Berm

Topsoil Ber...

Topsoil Ber...

Topsoil Ber...

Topsoil Ber...

Topsoil Ber...

Topsoil Ber...

Topsoil Ber...

Topsoil Ber...

Topsoil Ber...

Topsoil Ber...

Topsoil Ber...

Topsoil Ber...

Topsoil Ber...

Topsoil Ber...

Topsoil Ber...

Topsoil Ber...

Topsoil Ber...

Topsoil Ber...

Topsoil Ber...

Topsoil Ber...

Topsoil Ber...

Topsoil Ber...

Topsoil Ber...

Topsoil Ber...

Topsoil Ber...

Topsoil Ber...

Topsoil Ber...

Topsoil Ber...

Topsoil Ber...

Topsoil Ber...

Topsoil Ber...

Topsoil Ber...

Topsoil Ber...

Topsoil Ber...

Topsoil Ber...

Topsoil Ber...

Topsoil Ber...

Topsoil Ber...

Topsoil Ber...

Topsoil Ber...

Topsoil Ber...

Topsoil Ber...

Topsoil Ber...

Topsoil Ber...

Total Pit Capacity
= 59,680 Bbls.±
Total Pit Volume
= 12,410 Cu. Yds

SWMP LEGEND:

DP - DETENTION POND
ECB - EROSION CONTROL
BLANKET
LSd - LEVEL SPREADER
SCE - STABILIZED
CONSTRUCTION
ENTRANCE
SedR - SEDIMENT
RESERVOIR
ST - SEDIMENT TRAP