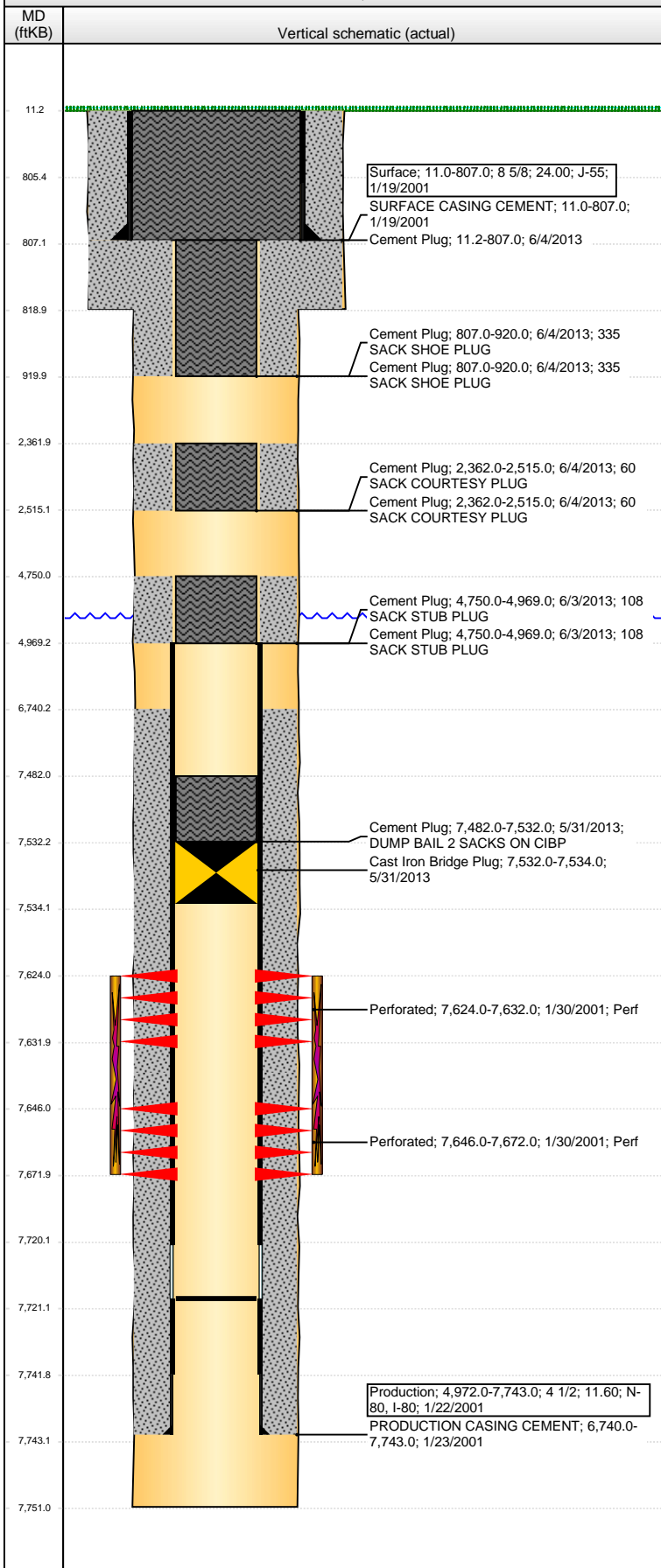


Well Name: BOLET RED X15-10JI

VERTICAL - ORIGINAL HOLE, 6/28/2013 1:46:08 PM



Well Header				
API	Business Unit	District	Well Config	
05-123-20141	WATTENBERG	15	VERTICAL	
Original KB Elevation (ft)	KB - GL / MSL (ftKB)	Spud Date	P & A Date	
4,891.00	11.00	1/17/2001	6/5/2013	
Comment				
Directions To Well				
Congressional Location				
Quarter 1	Quarter 2	Quarter 3	Quarter 4	Section
		NW	SE	15
Township				
2 N				
Range				
65 W				
Bottom Hole Location				
North-South Distance (ft)		From N or S Line		East-West Distance (ft)
				From E or W Line
Plug Back Total Depths				
Date	Depth (ftKB)	Method	Com	
1/22/2001	7,721.0	TAG		
Wellbore Sections				
Section Des	Size (in)	Act Top (ftKB)	Act Btm (ftKB)	
SURFACE	12 1/4	11.0	819.0	
PRODUCTION	7 7/8	819.0	7,751.0	
Zone Statuses				
Zone Name	Status Date	Status	Job	
J SAND	2/6/2001	PR	DRILLING - ORIGINAL, 1/17/2001 00:00	
J SAND	5/31/2013	P&A	ABANDON WELL, 5/31/2013 06:00	
Casing Strings				
Surface, 807.0ftKB				
Casing Description	Run Date	OD (in)	Wt/Len (l...)	Grade
Surface	1/19/2001	8 5/8	24.00	J-55
Top (ftKB)				
807.0				
Production, 7,743.0ftKB				
Casing Description	Run Date	OD (in)	Wt/Len (l...)	Grade
Production	1/22/2001	4 1/2	11.60	I-80
Top (ftKB)				
11.0				
MD (ftKB)				
7,743.0				
Cement				
Description	Top Depth (ftKB)	Bottom Depth (ftKB)		
SURFACE CASING CEMENT	11.0	807.0		
Description	Top Depth (ftKB)	Bottom Depth (ftKB)		
PRODUCTION CASING CEMENT	6,740.0	7,743.0		
Description	Top Depth (ftKB)	Bottom Depth (ftKB)		
Cement Plug	7,482.0	7,532.0		
Description	Top Depth (ftKB)	Bottom Depth (ftKB)		
Cement Plug	4,750.0	4,969.0		
Description	Top Depth (ftKB)	Bottom Depth (ftKB)		
Cement Plug	4,750.0	4,969.0		
Description	Top Depth (ftKB)	Bottom Depth (ftKB)		
Cement Plug	807.0	920.0		
Description	Top Depth (ftKB)	Bottom Depth (ftKB)		
Cement Plug	807.0	920.0		
Description	Top Depth (ftKB)	Bottom Depth (ftKB)		
Cement Plug	2,362.0	2,515.0		
Description	Top Depth (ftKB)	Bottom Depth (ftKB)		
Cement Plug	2,362.0	2,515.0		
Description	Top Depth (ftKB)	Bottom Depth (ftKB)		
Cement Plug	11.2	807.0		
Tubing Components				
Item Des	OD (in)	Wt (lb/ft)	Grade	Jts
Perforation Data				
Zone	Bnch/St g	Entered Shot Total	Top (ftKB)	Btm (ftKB)
J SAND, ORIGINAL HOLE		16	7,624.00	7,632.00
J SAND, ORIGINAL HOLE		52	7,646.00	7,672.00
Stimulations & Treatments				
Date	Zone	Primary Job Type		
2/1/2001	J SAND, ORIGINAL HOLE	DRILLING - ORIGINAL		
Technical Result		Tech Result Details		Tech Result Note
Comment				

Well Name: BOLET RED X15-10JI

VERTICAL - ORIGINAL HOLE, 6/28/2013 1:46:09 PM

Other In Hole

Run Date	Des	OD (in)	Top (ftKB)	Btm (ftKB)
5/31/2013	Cast Iron Bridge Plug	3.99	7,532.0	7,534.0

Logs

Date	Type	Top (ftKB)	Btm (ftKB)
1/22/2001	COMPENSATED DENSITY	4,400.0	7,731.0
1/22/2001	INDUCTION	807.0	7,751.0
1/30/2001	CBL/CCL/GR	6,450.0	7,714.0
7/6/2012	GYRO	10.0	7,550.0

