



DYER USX AB35-68-1HN FINAL 5" MD

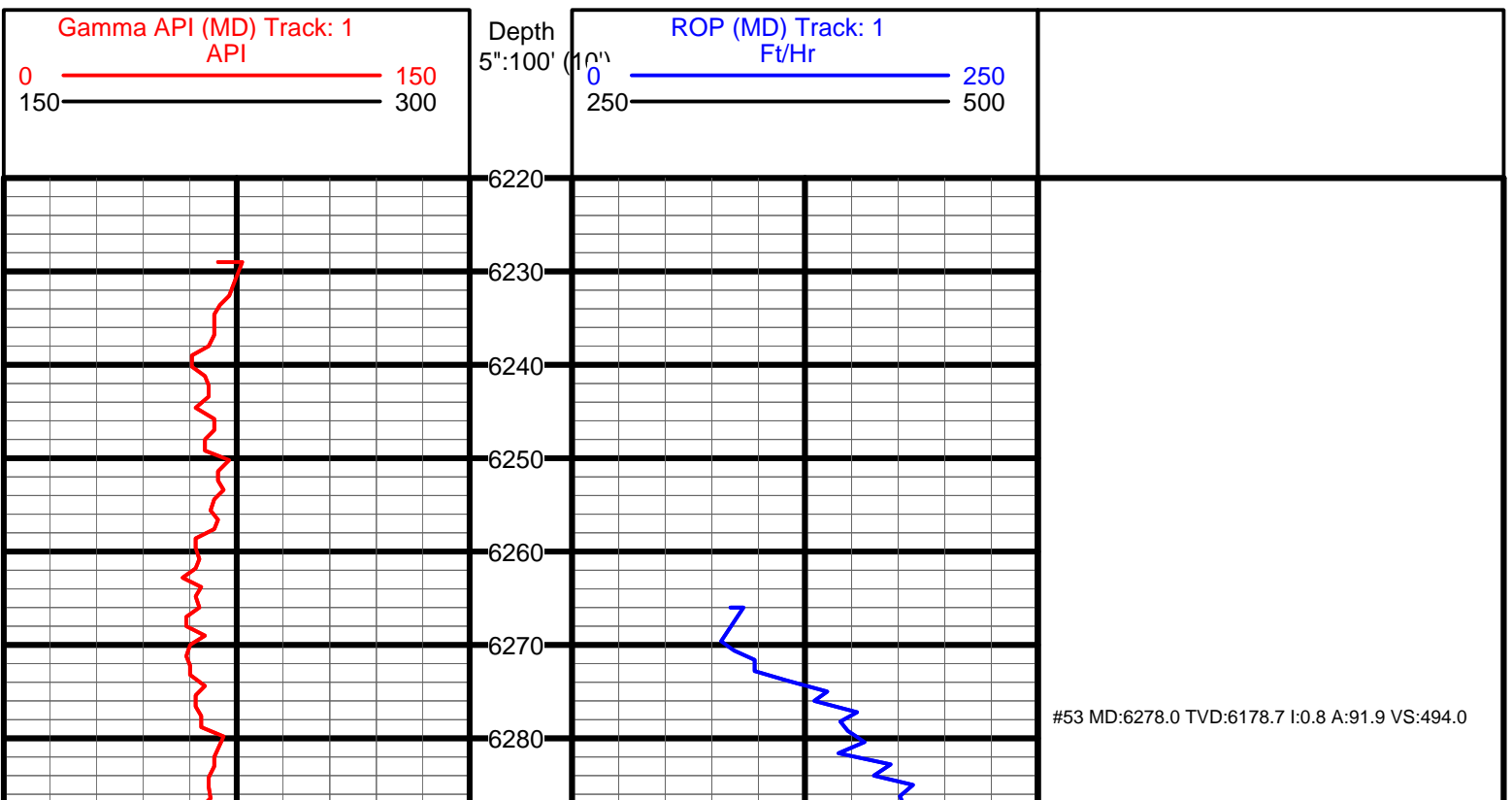
(Scale: 5" : 100' (10"))

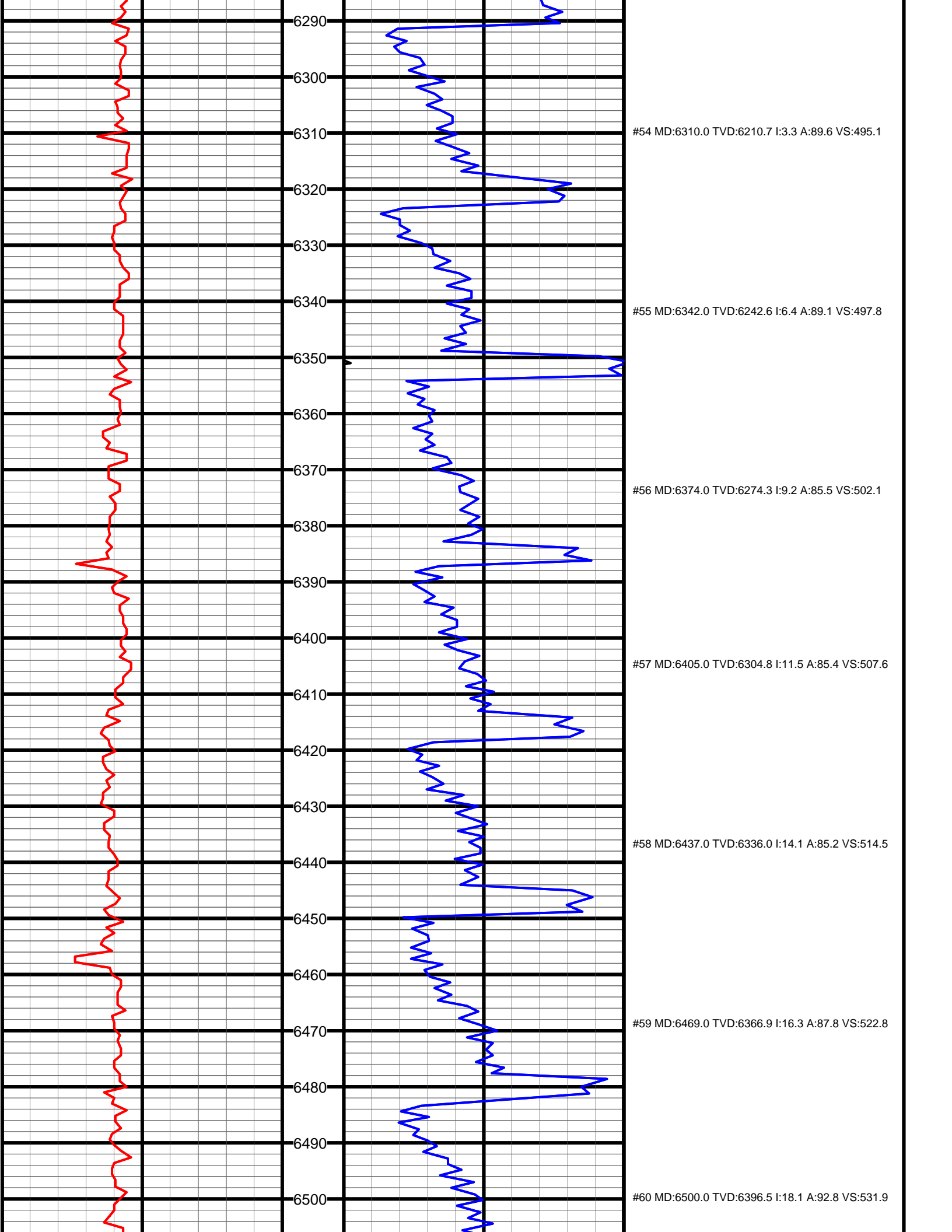
Company: NOBLE ENERGY INC State: COLORADO
 Well: DYER USX AB35-68-1HN County: WELD
 Field: NORTH WATTENBERG Country: US
 Well ID: 05-123-34773
 Job Number: RM-12175
 Location: LAT: 40° 32' 9.780" N ; LONG: 104° 31' 40.152" W Elev KB: 4,895'
 Operator 1: BOYD WOLFF Elev DF: N/A
 Operator 2: CHRIS ABBOTT Elev GL: 4,871'

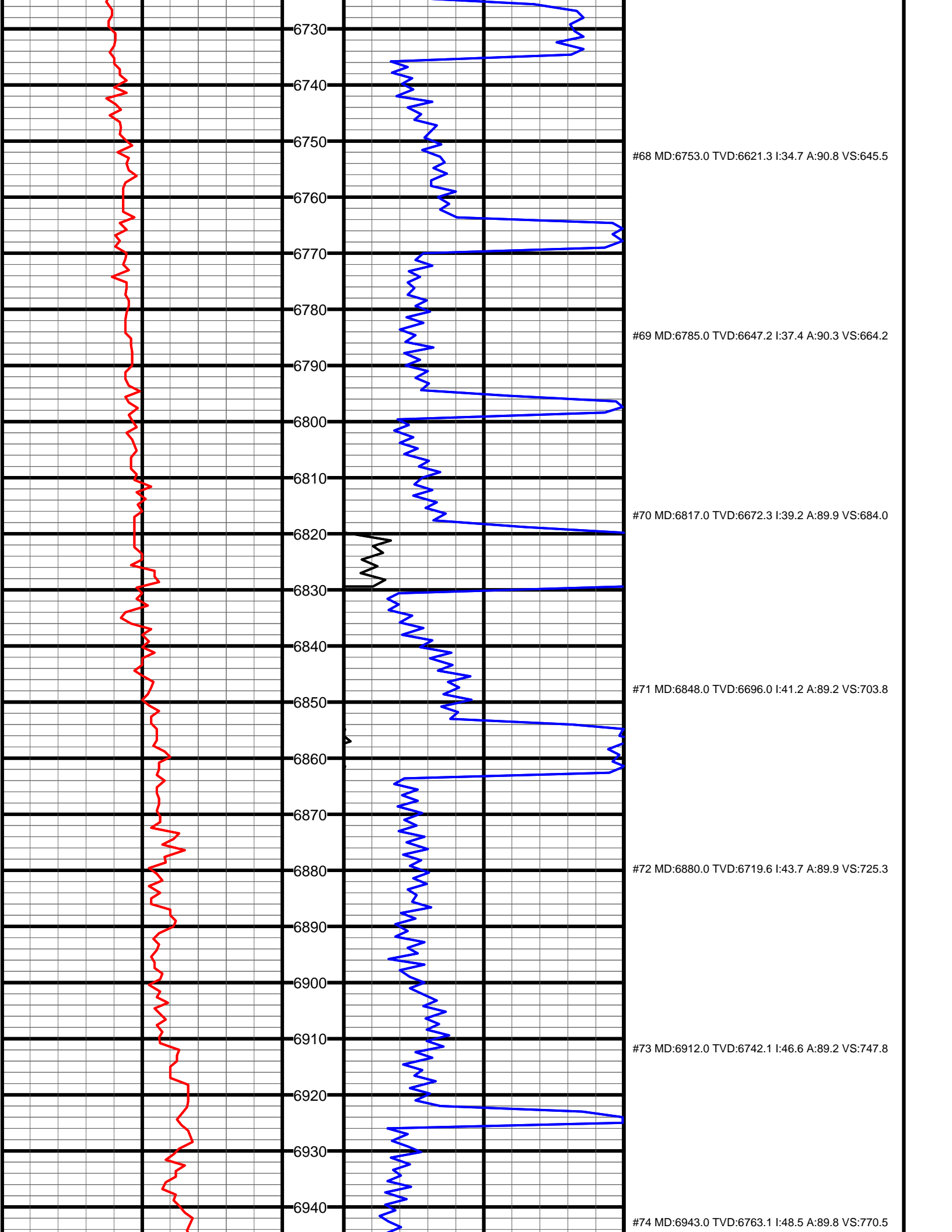
Comment 1: FINAL 5" MD GAMMA LOG
 Comment 2: TIE INTO SURFACE CASING AT 839'
 Comment 3:
 Comment 4:
 Comment 5:

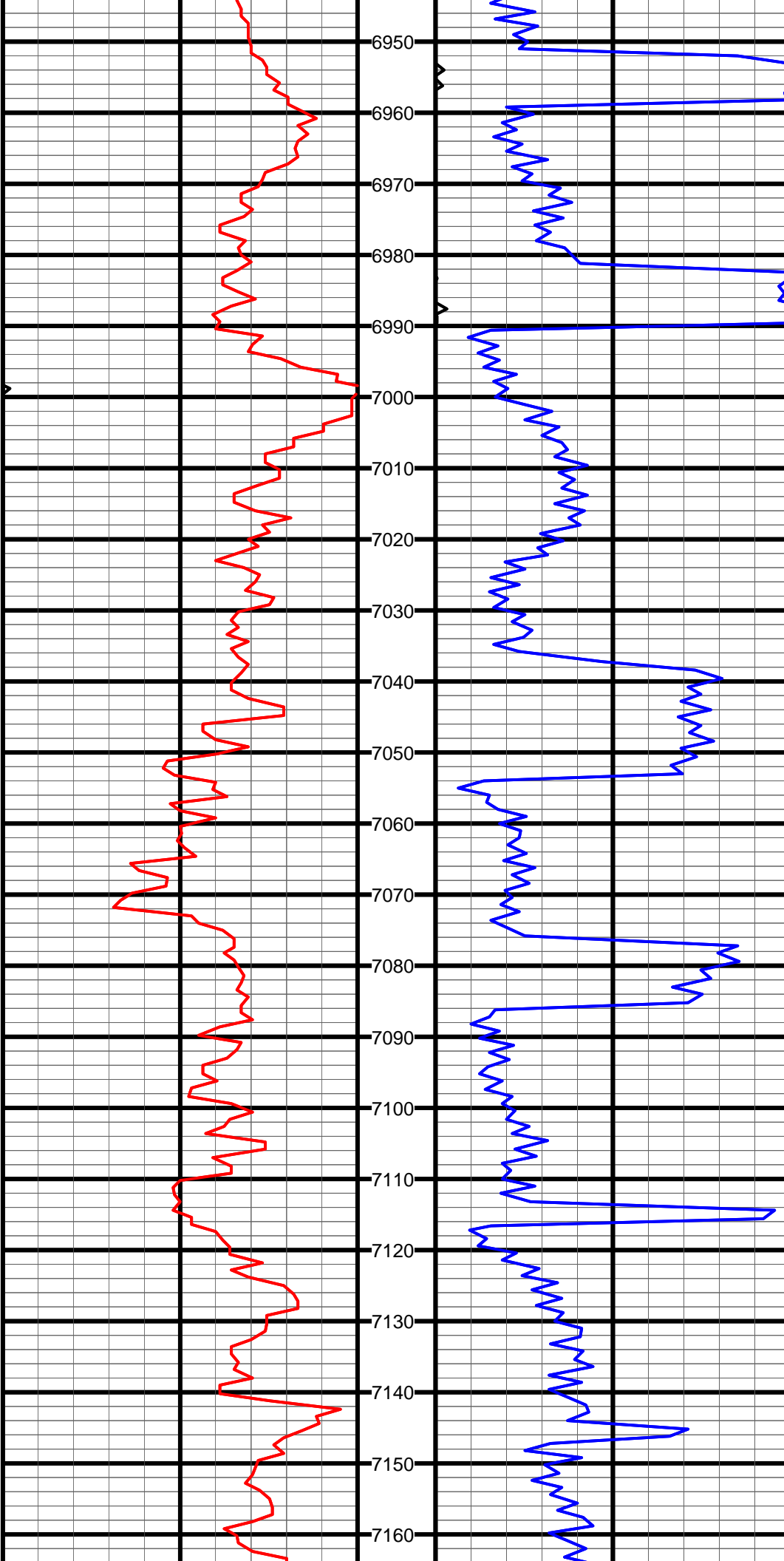
Hole Data			Casing Record		
Size	From	To	Size	From	To
13 3/4"	0	849'	9 5/8"	0	839'
8 3/4"	849'	7405'	7"	839'	7,396'
6 1/8"	7,405'	11,361'			

Tool Run Data		Run #1	Run #2	Run #3	Run #4	Run #5
Tool S/N	0186 XXT	5618 XXT	5618 XXT			
Cal Factor	N/A	3.62	1.99			
Gamma Offset	N/A	37'	46'			
Start Depth	849'	6,266'	7,405'			
Start Date	3/10/2012	3/12/2012	3/15/2012			
Start Time	16:00	08:00	06:30			
End Depth	6,266'	7,405'	11,361'			
End Date	3/12/2012	3/13/2012	3/17/2012			
End Time	05:30	20:00	00:30			









#75 MD:6975.0 TVD:6783.7 I:51.1 A:88.7 VS:794.8

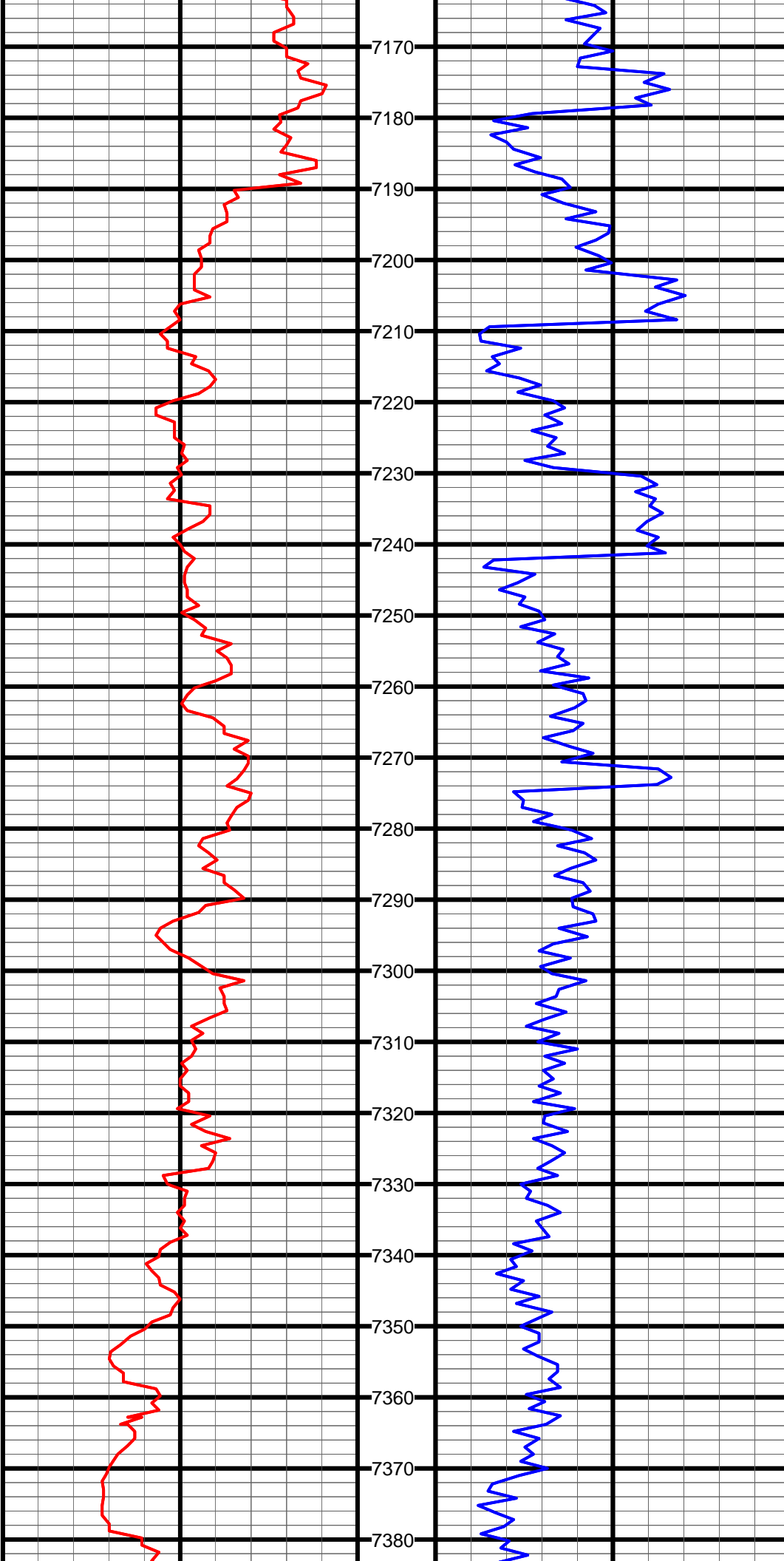
#76 MD:7007.0 TVD:6803.3 I:53.5 A:88.3 VS:819.9

#77 MD:7039.0 TVD:6821.9 I:55.3 A:87.5 VS:845.6

#78 MD:7070.0 TVD:6839.1 I:57.5 A:87.1 VS:871.1

#79 MD:7102.0 TVD:6855.6 I:60.2 A:86.8 VS:898.2

#80 MD:7134.0 TVD:6870.7 I:63.5 A:87.7 VS:926.0



#81 MD:7165.0 TVD:6883.9 I:66.3 A:87.7 VS:953.8

#82 MD:7197.0 TVD:6896.2 I:68.3 A:86.9 VS:983.0

#83 MD:7229.0 TVD:6907.6 I:70.0 A:87.3 VS:1012.5

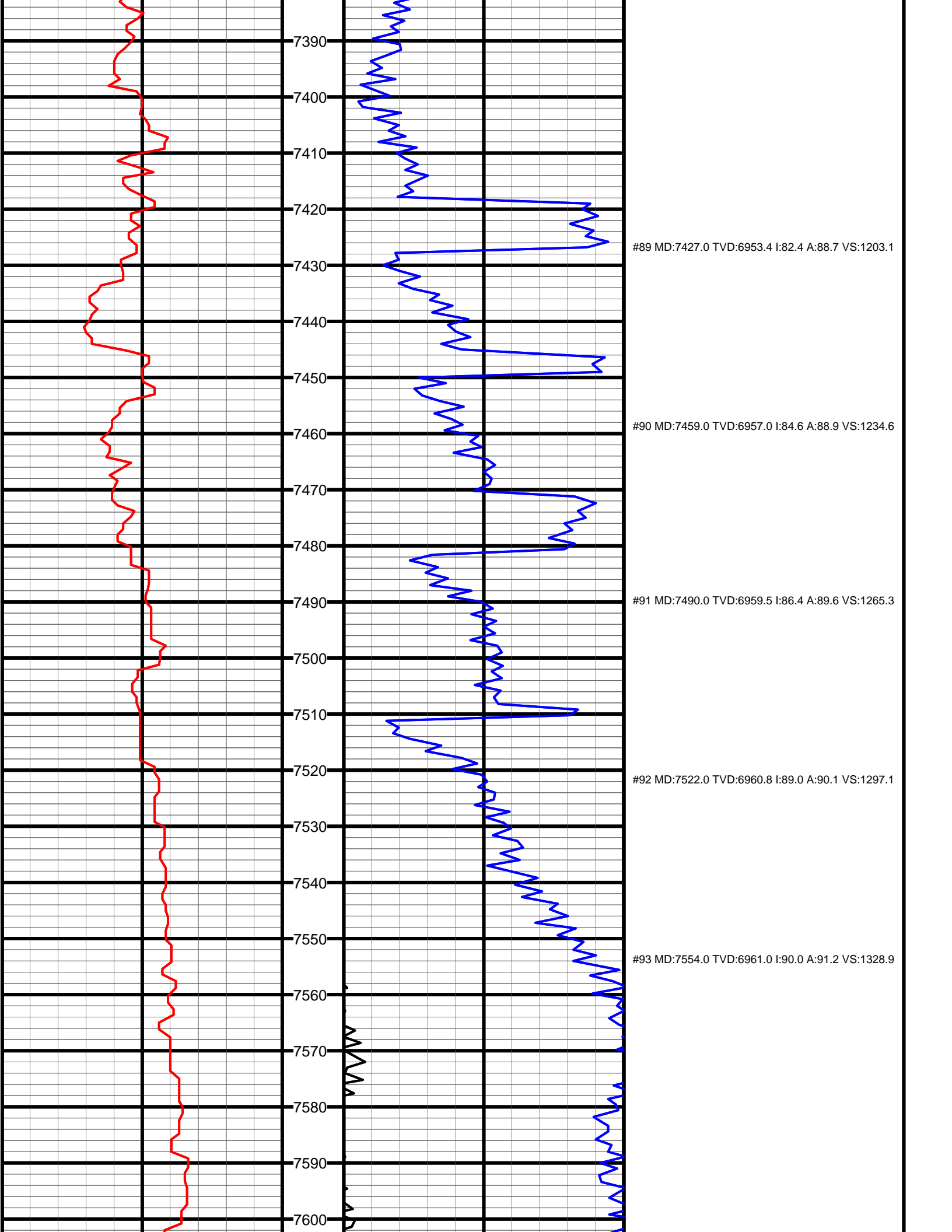
#84 MD:7260.0 TVD:6917.5 I:72.6 A:88.3 VS:1041.5

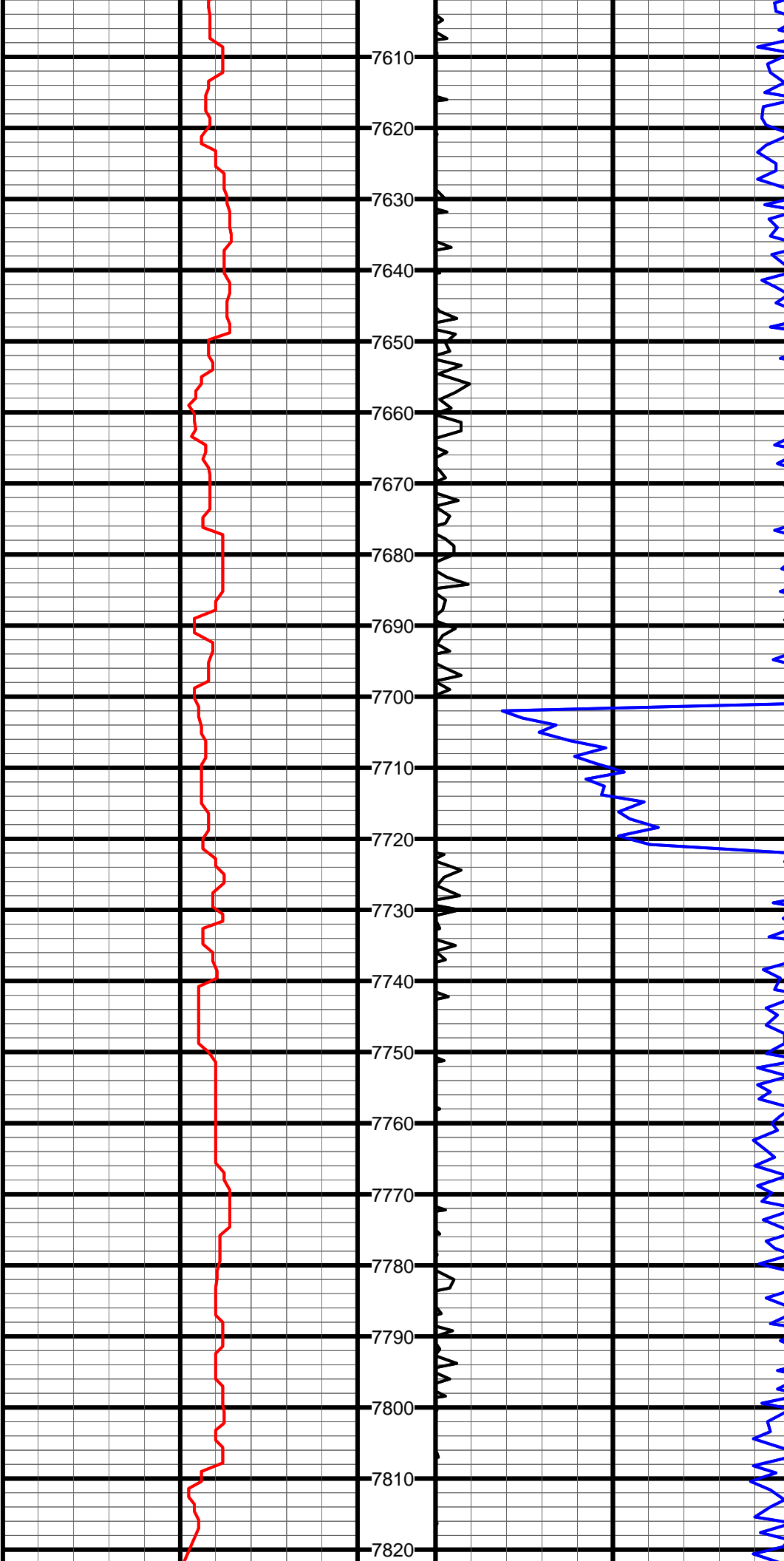
#85 MD:7292.0 TVD:6926.5 I:74.7 A:89.4 VS:1072.0

#86 MD:7324.0 TVD:6934.5 I:76.4 A:89.6 VS:1102.7

#87 MD:7355.0 TVD:6941.3 I:78.3 A:88.5 VS:1132.8

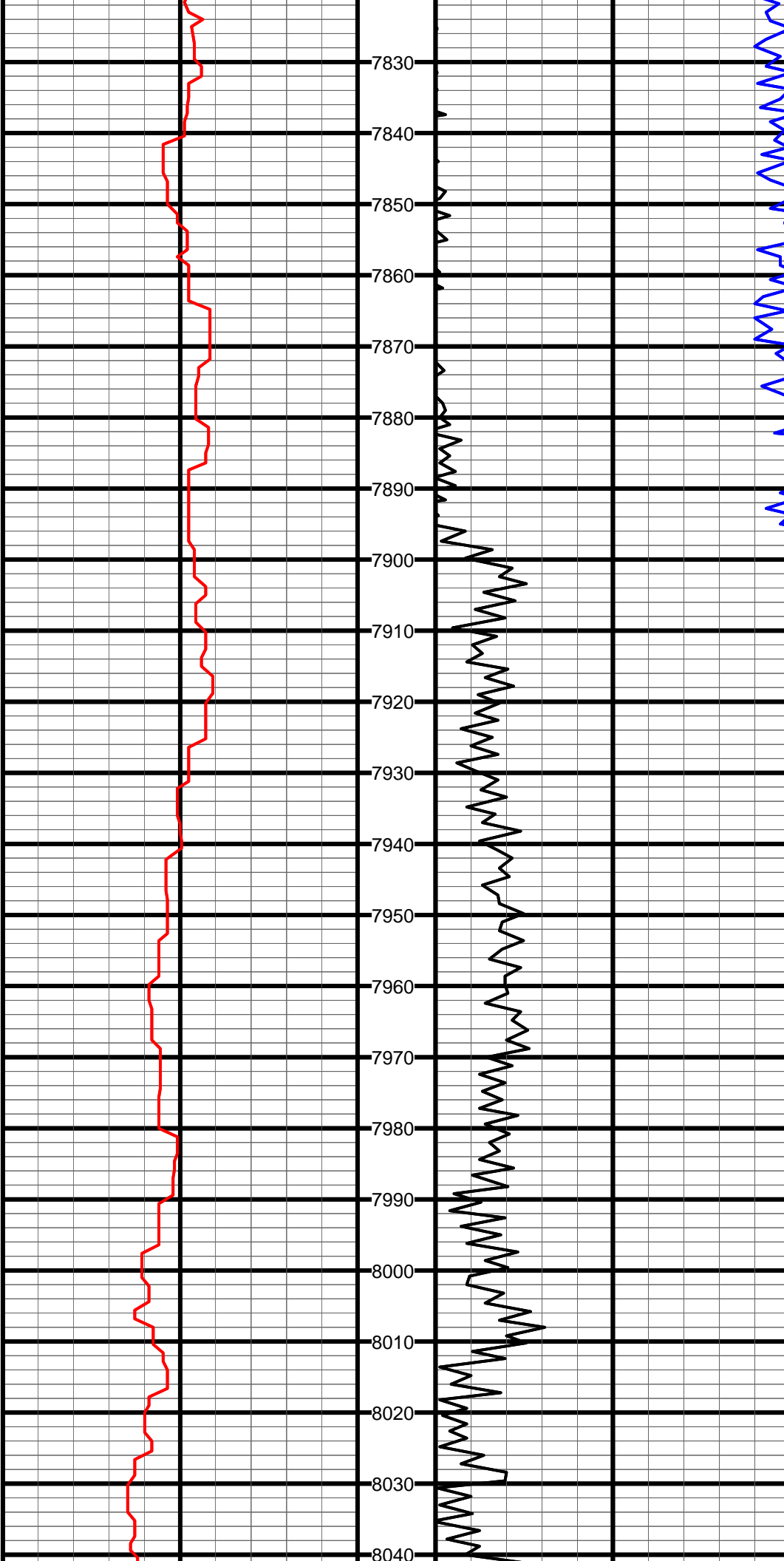
#88 MD:7361.0 TVD:6942.5 I:78.6 A:88.7 VS:1138.6





#94 MD:7649.0 TVD:6961.9 I:88.9 A:90.8 VS:1423.5

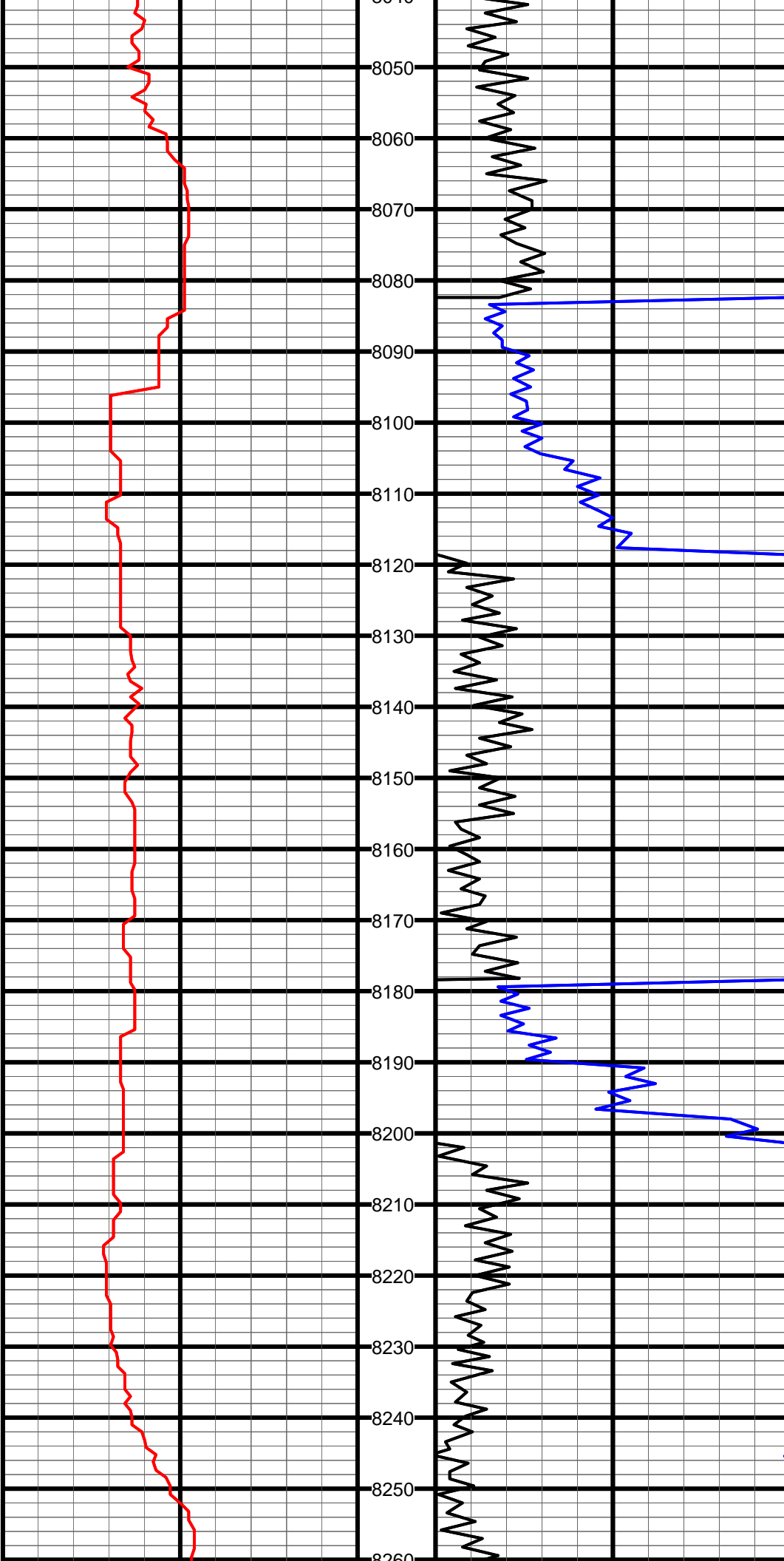
#95 MD:7744.0 TVD:6961.4 I:91.8 A:90.5 VS:1518.1



#96 MD:7839.0 TVD:6958.8 I:91.3 A:90.5 VS:1612.6

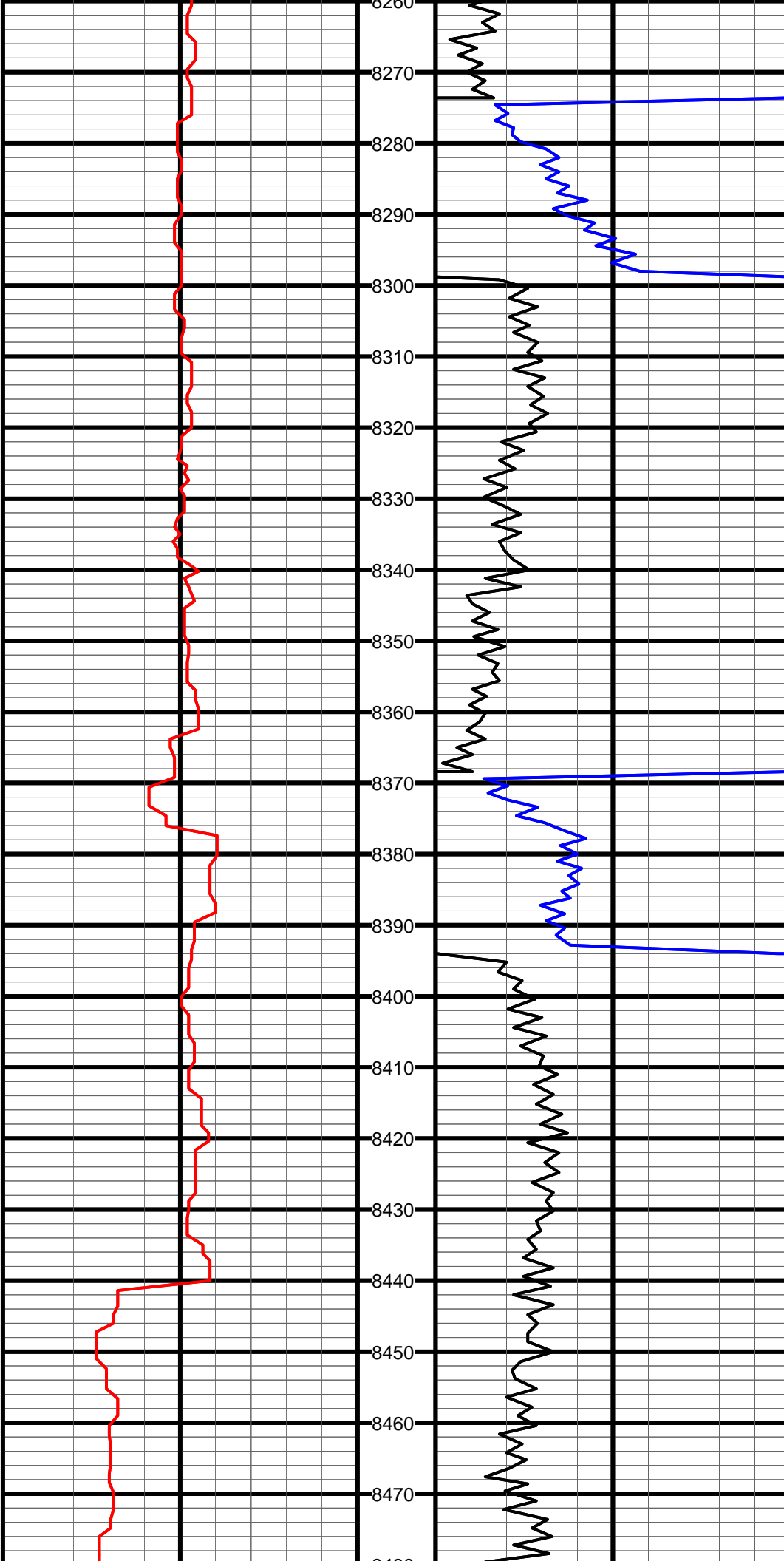
#97 MD:7934.0 TVD:6956.8 I:91.1 A:90.5 VS:1707.1

#98 MD:8029.0 TVD:6954.4 I:91.8 A:90.5 VS:1801.6



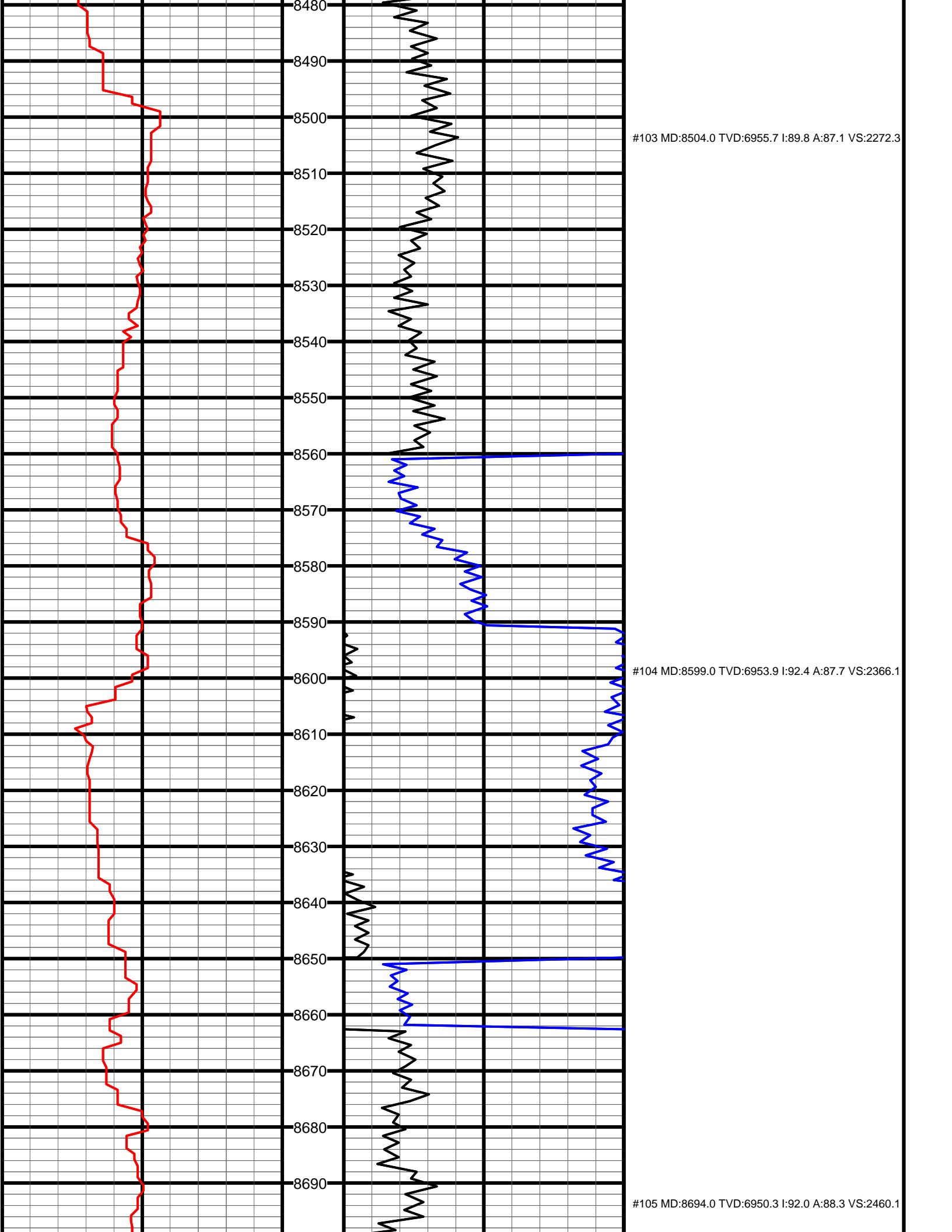
#99 MD:8124.0 TVD:6952.4 I:90.6 A:90.4 VS:1896.1

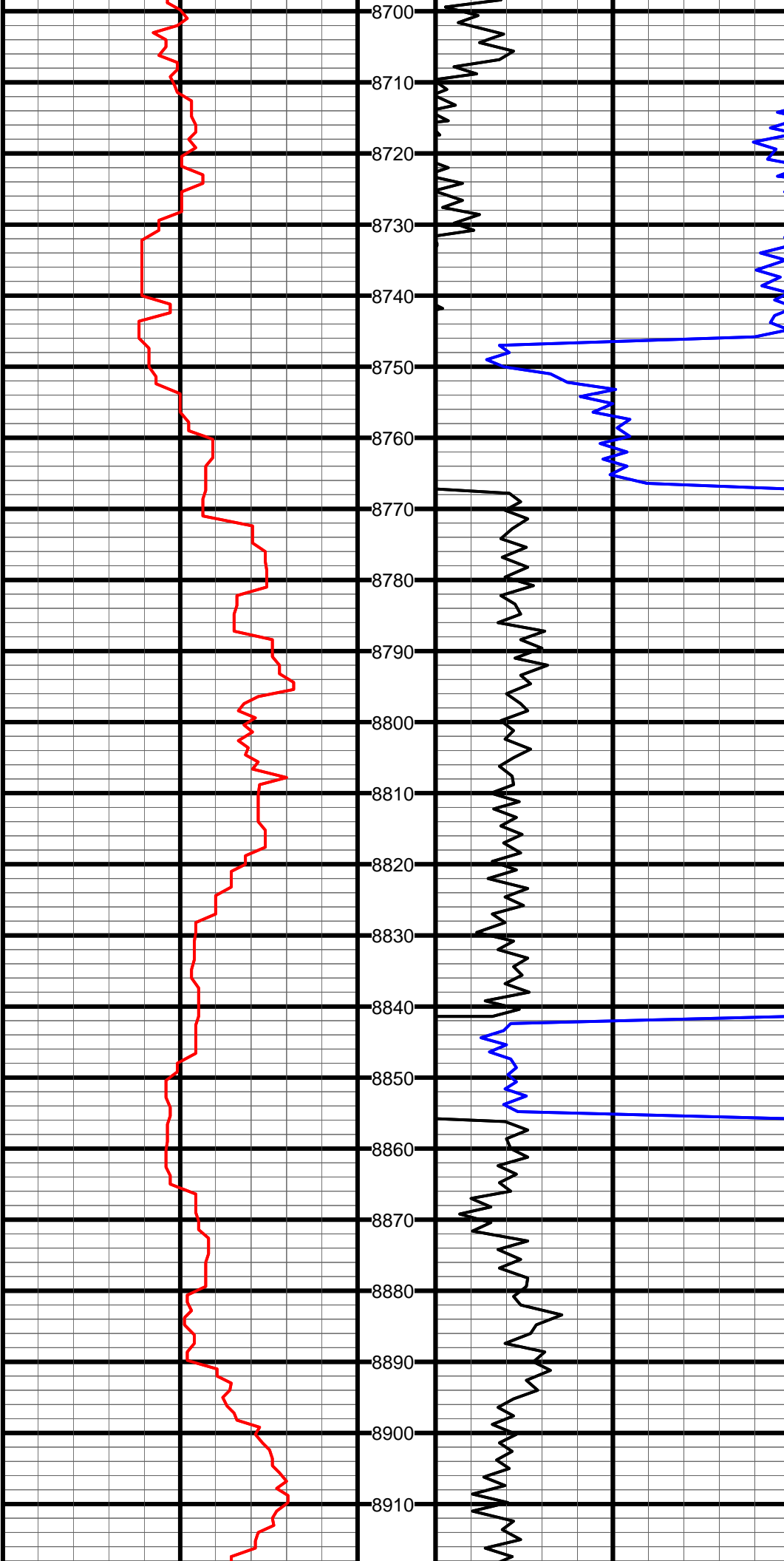
#100 MD:8219.0 TVD:6953.0 I:88.7 A:90.3 VS:1990.6



#101 MD:8314.0 TVD:6955.2 I:88.6 A:86.9 VS:2084.7

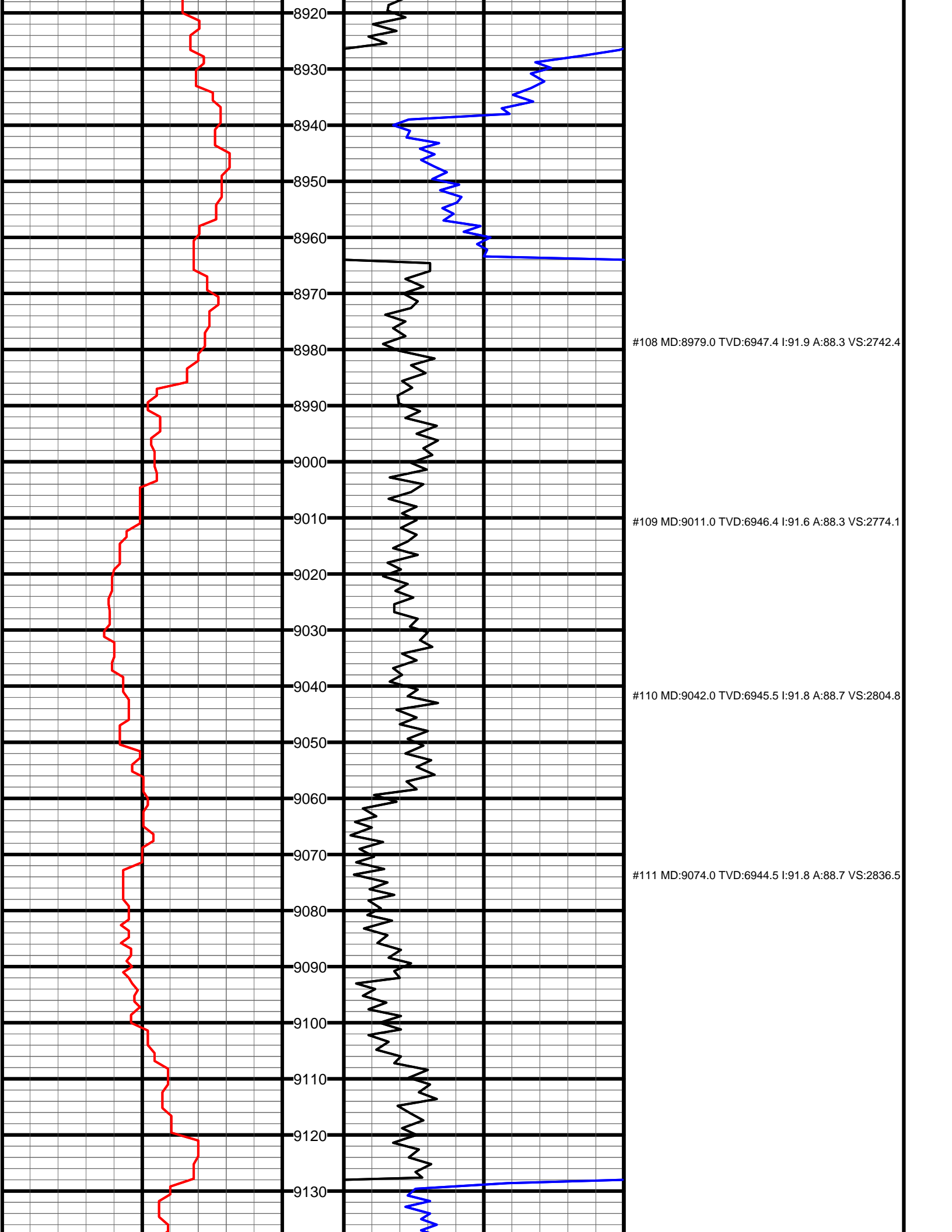
#102 MD:8409.0 TVD:6956.0 I:90.5 A:87.1 VS:2178.5

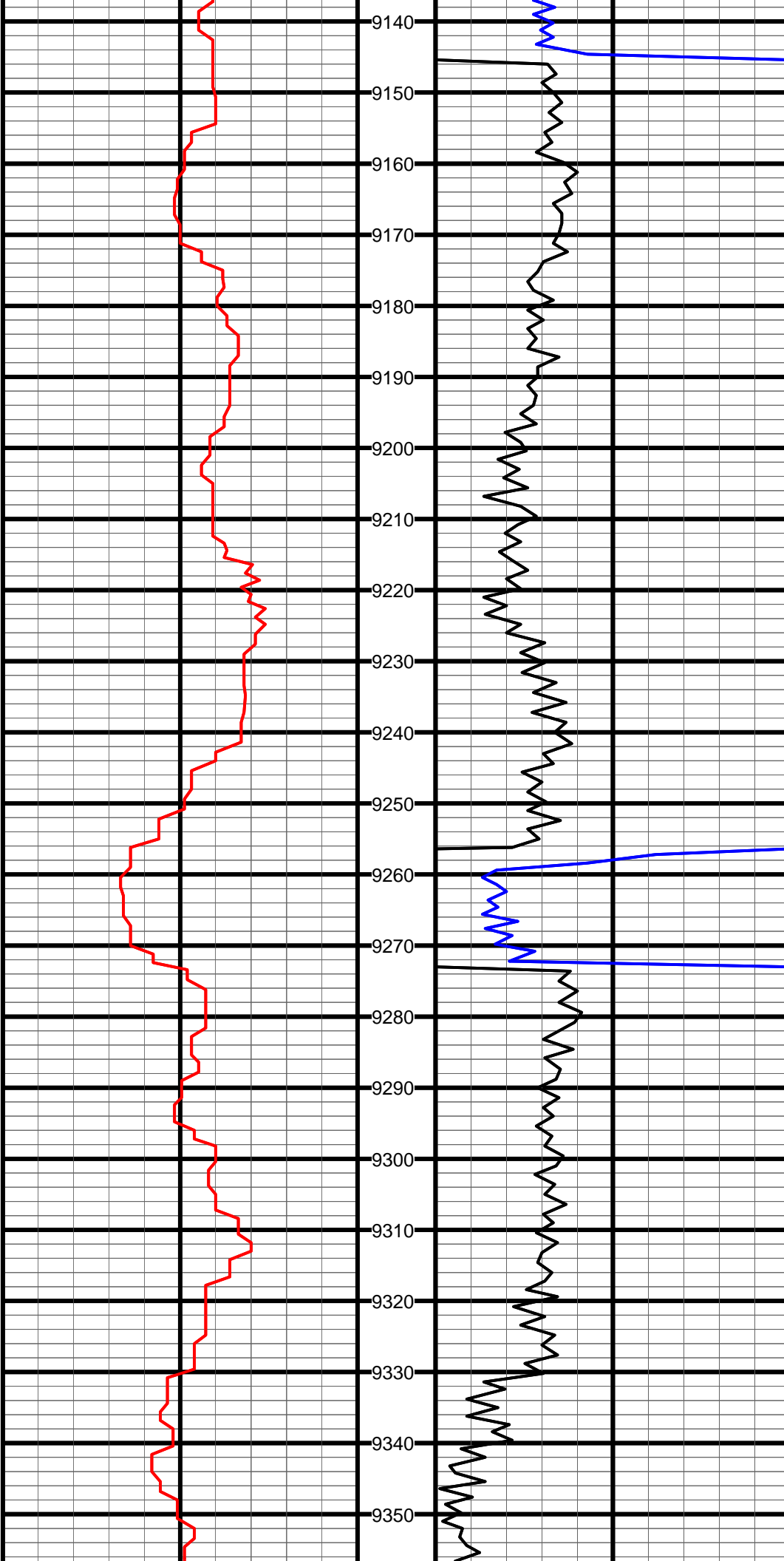




#106 MD:8789.0 TVD:6947.9 I:90.8 A:88.7 VS:2554.2

#107 MD:8884.0 TVD:6948.1 I:89.0 A:88.3 VS:2648.3



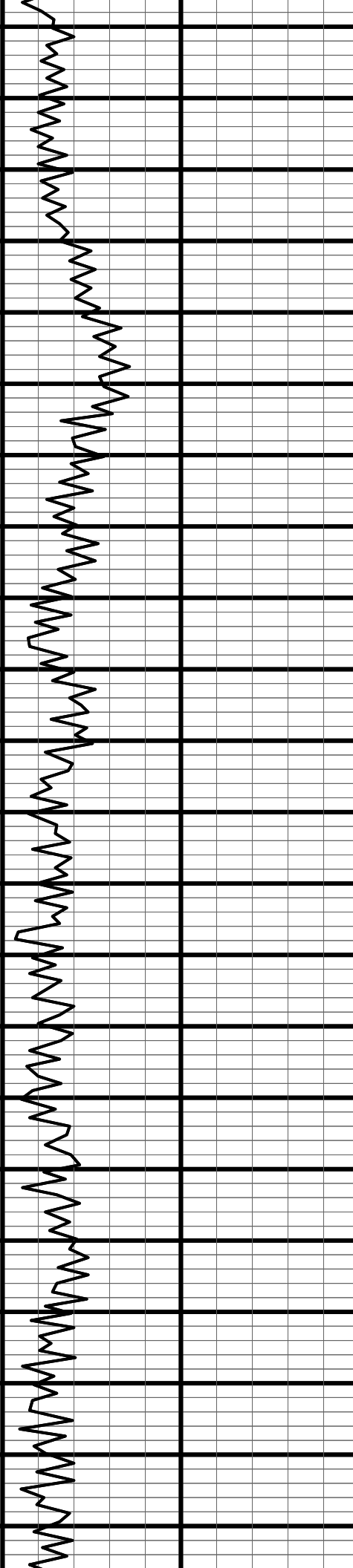
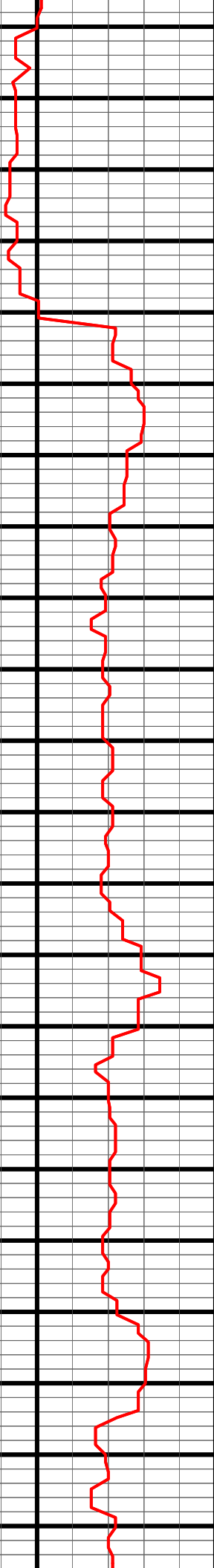


#112 MD:9169.0 TVD:6942.5 I:90.5 A:88.0 VS:2930.6

#113 MD:9264.0 TVD:6942.7 I:89.3 A:88.2 VS:3024.6

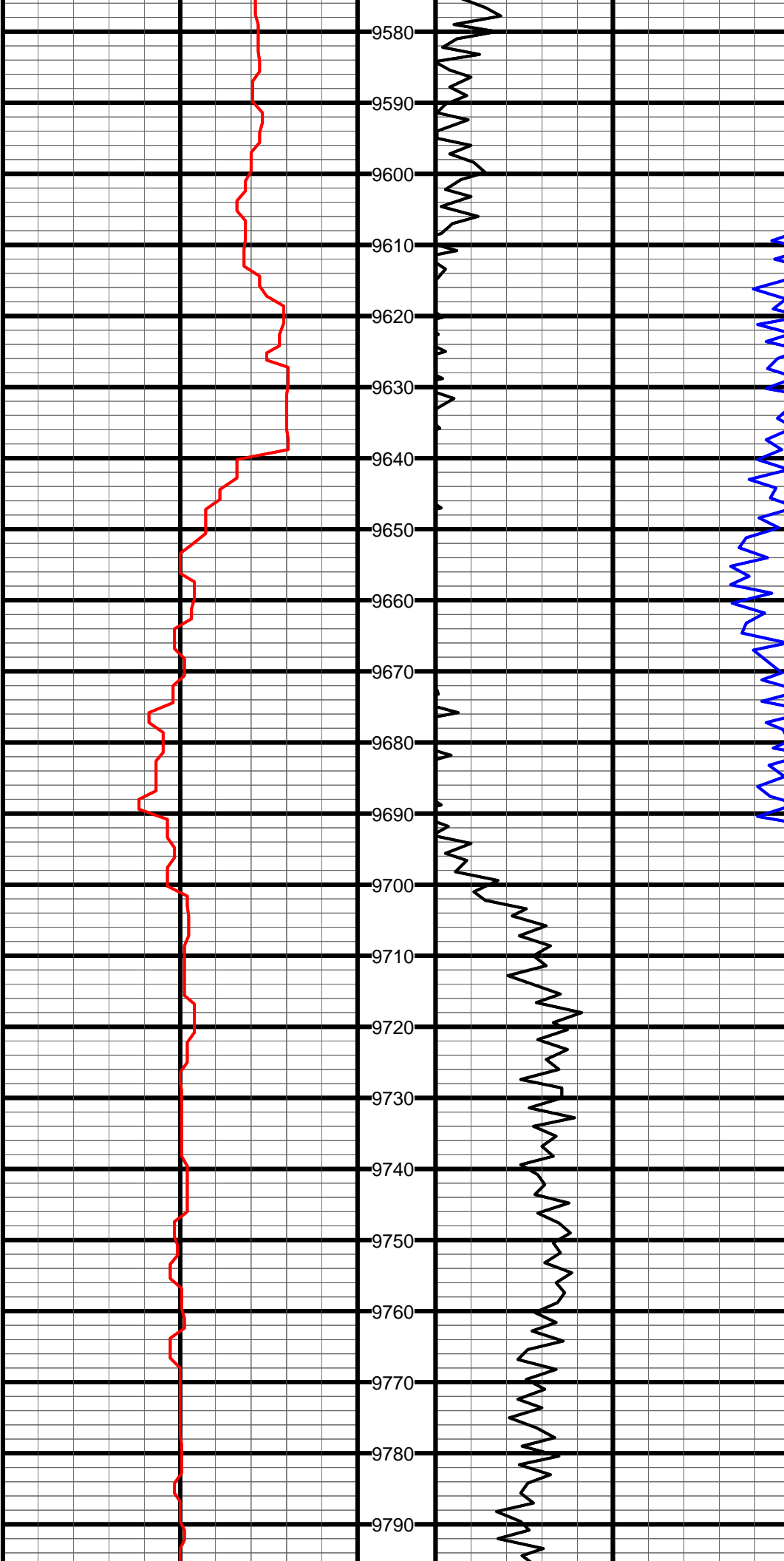
#114 MD:9359.0 TVD:6944.0 I:89.1 A:88.5 VS:3118.7

9360
9370
9380
9390
9400
9410
9420
9430
9440
9450
9460
9470
9480
9490
9500
9510
9520
9530
9540
9550
9560
9570



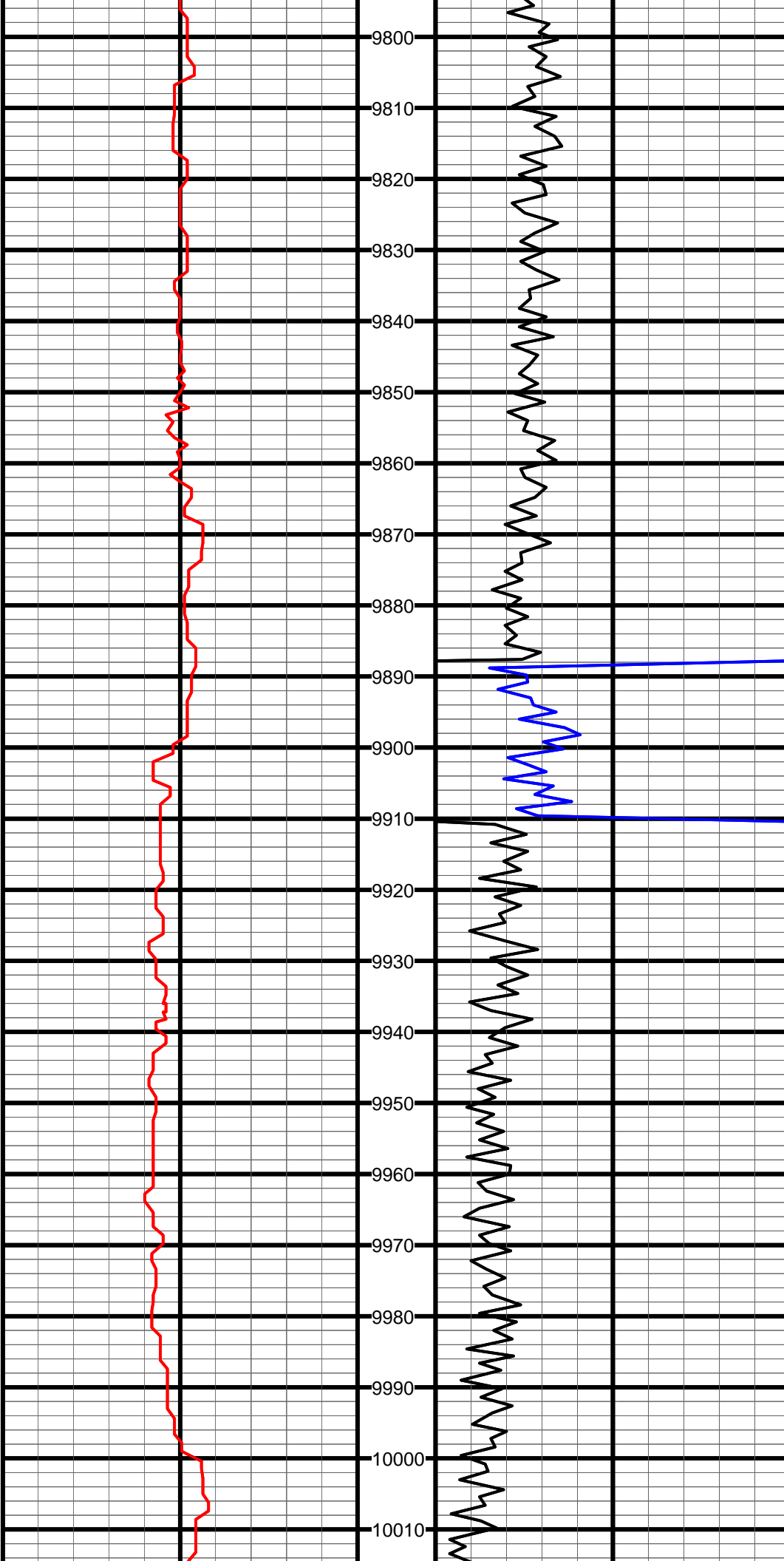
#115 MD:9454.0 TVD:6945.3 I:89.4 A:87.1 VS:3212.7

#116 MD:9549.0 TVD:6946.2 I:89.5 A:87.5 VS:3306.5



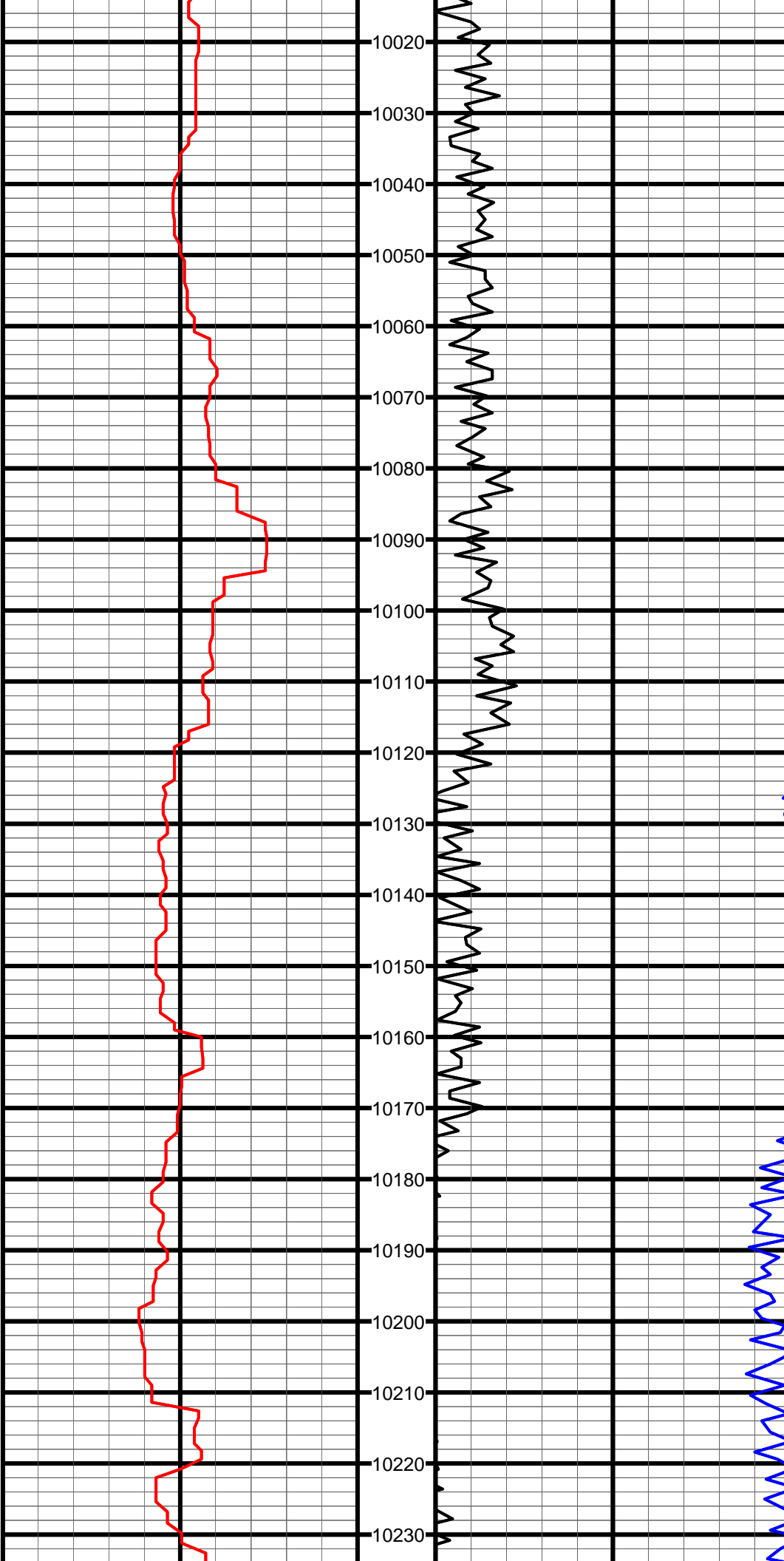
#117 MD:9644.0 TVD:6946.6 I:90.0 A:88.0 VS:3400.5

#118 MD:9739.0 TVD:6946.3 I:90.4 A:87.8 VS:3494.5



#119 MD:9833.0 TVD:6944.8 I:91.4 A:88.2 VS:3587.5

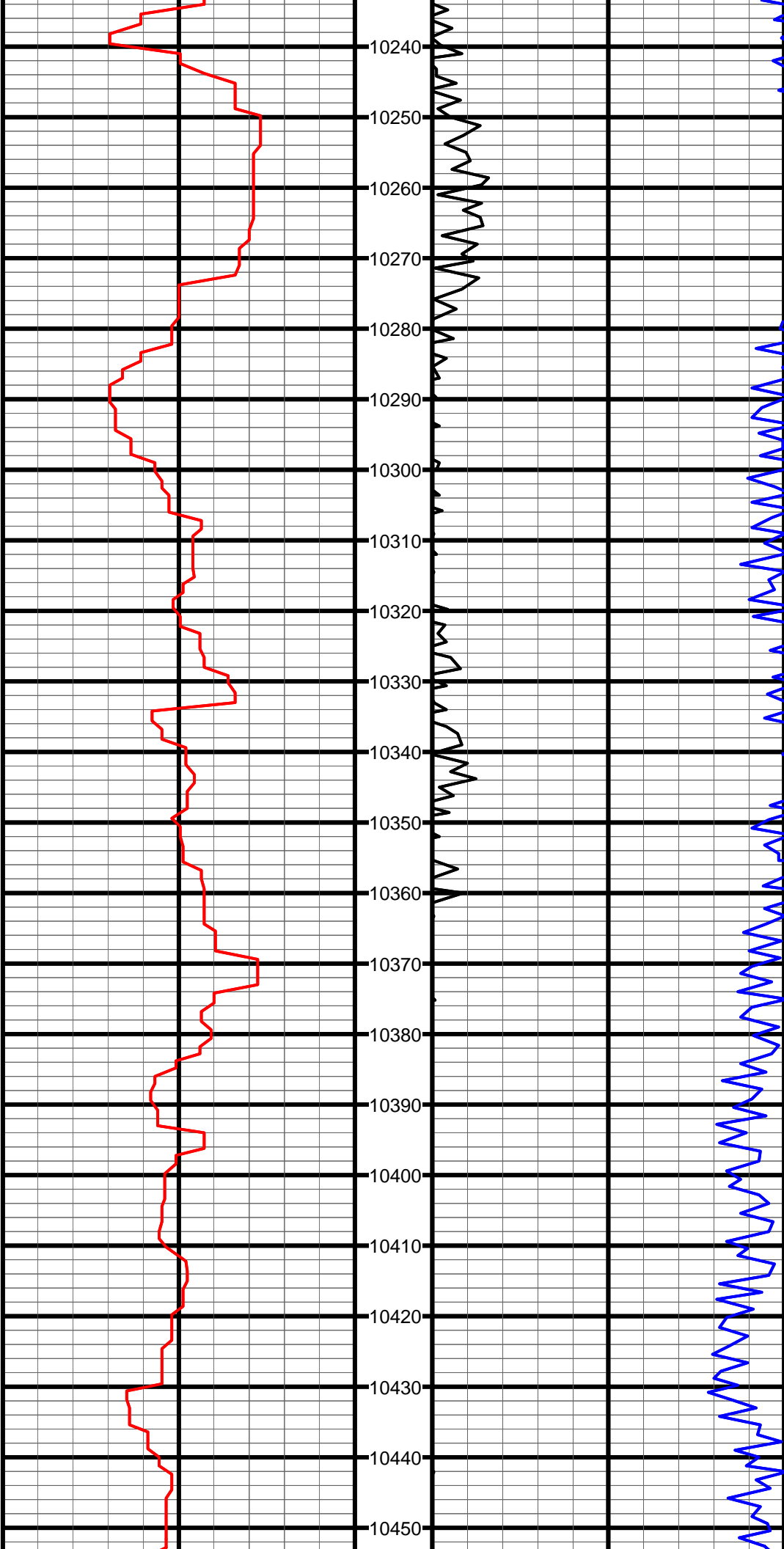
#120 MD:9929.0 TVD:6943.6 I:90.0 A:87.3 VS:3682.5



#121 MD:10024.0 TVD:6944.0 I:89.5 A:86.9 VS:3776.3

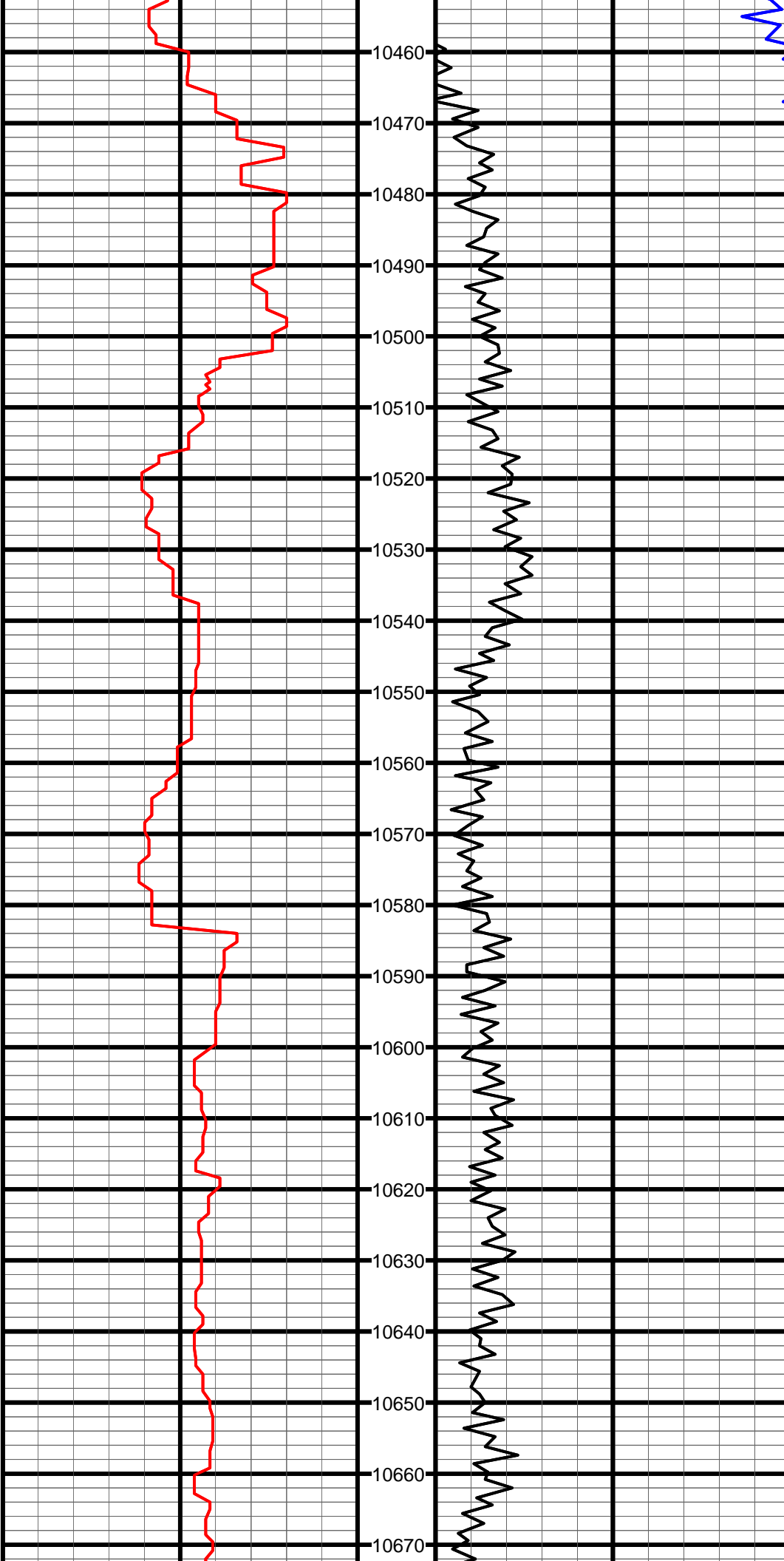
#122 MD:10119.0 TVD:6944.5 I:90.0 A:87.3 VS:3870.1

#123 MD:10213.0 TVD:6944.4 I:90.1 A:88.0 VS:3963.0



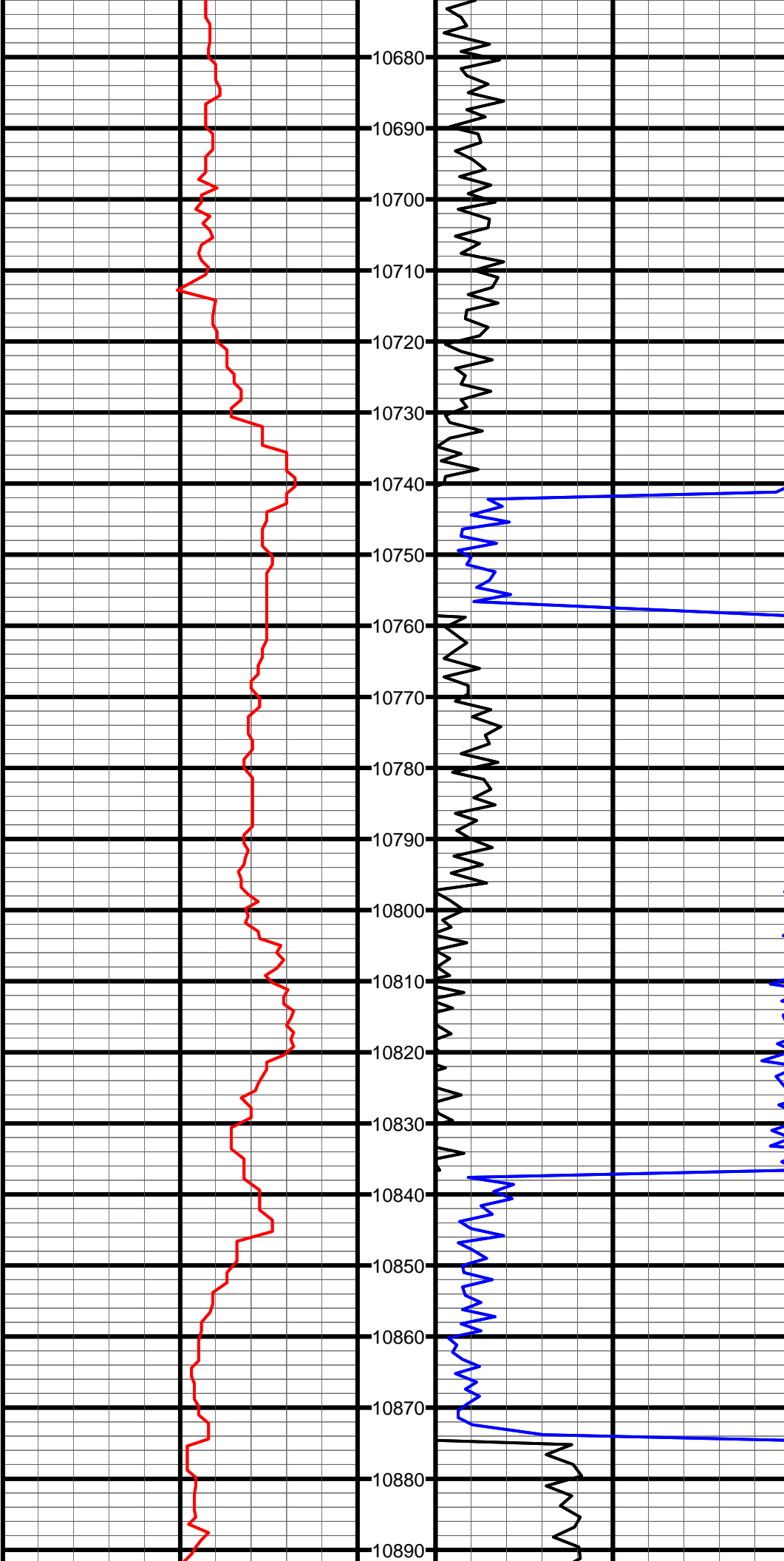
#124 MD:10308.0 TVD:6944.1 I:90.2 A:87.5 VS:4057.0

#125 MD:10403.0 TVD:6944.0 I:89.9 A:88.3 VS:4151.0



#126 MD:10498.0 TVD:6944.2 I:89.9 A:88.2 VS:4245.1

#127 MD:10594.0 TVD:6943.3 I:91.2 A:88.9 VS:4340.2

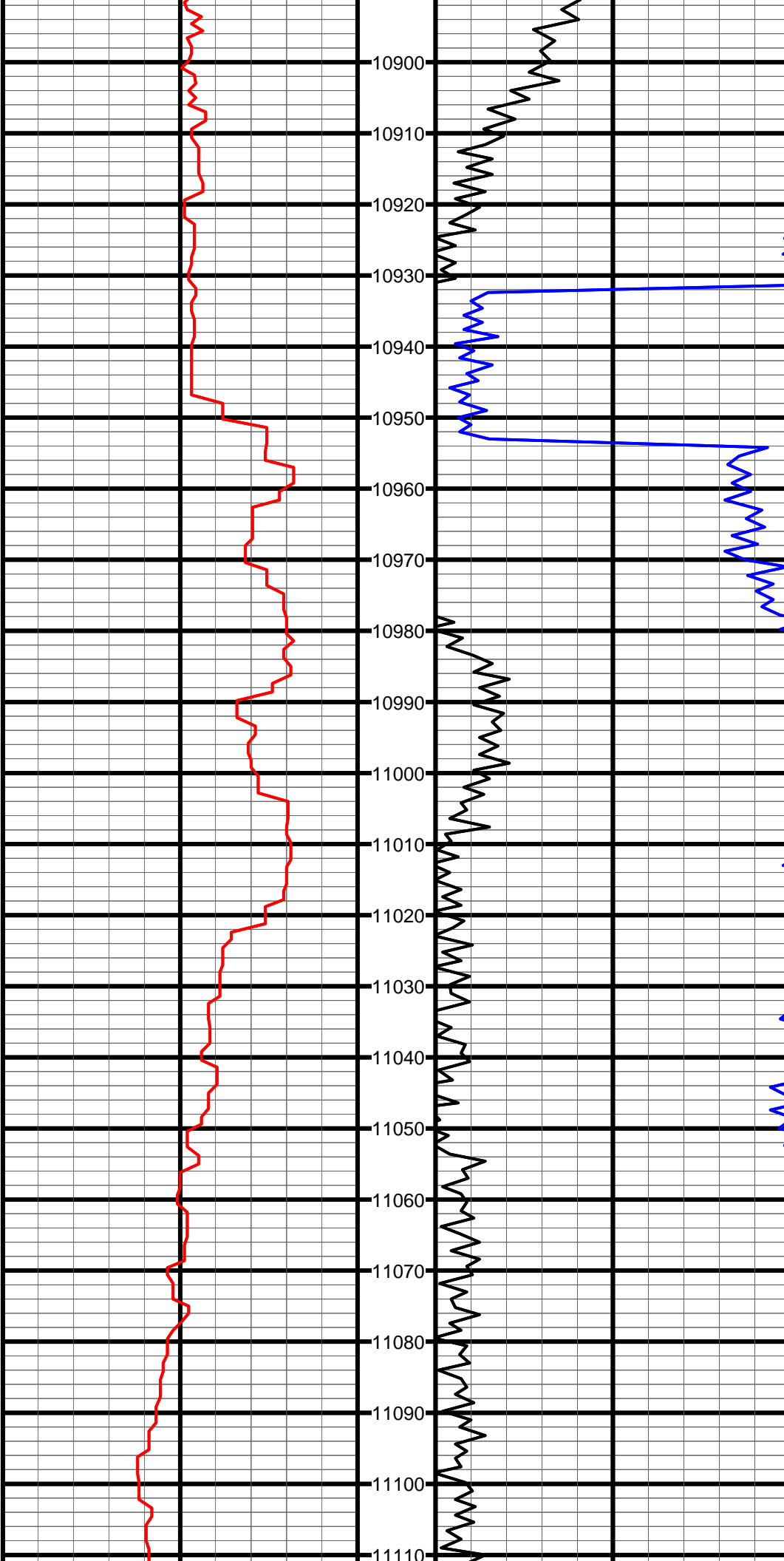


#128 MD:10689.0 TVD:6940.1 I:92.7 A:89.8 VS:4434.5

#129 MD:10784.0 TVD:6935.7 I:92.6 A:90.5 VS:4528.9

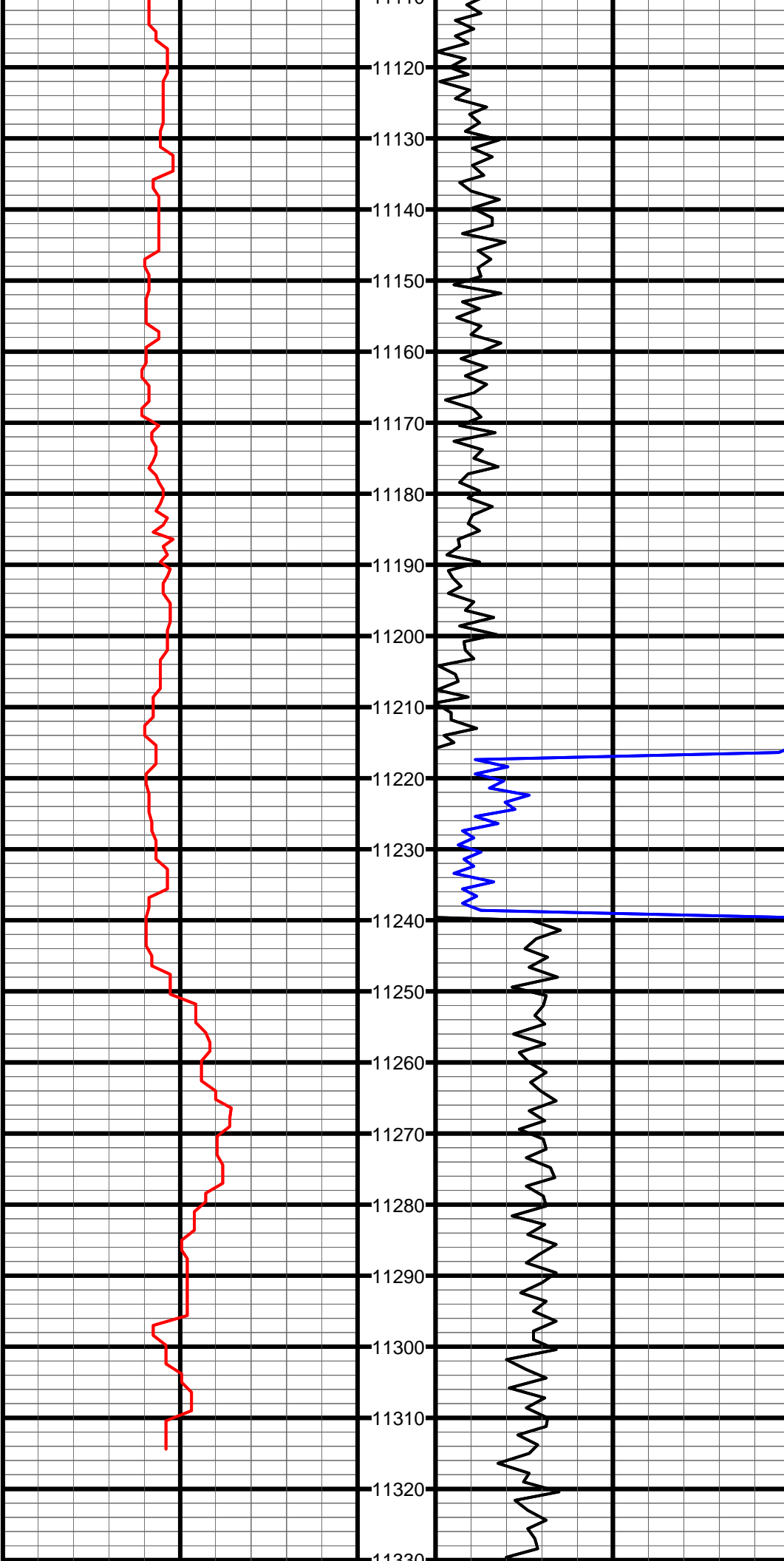
#130 MD:10847.0 TVD:6933.1 I:92.0 A:90.3 VS:4591.5

#131 MD:10879.0 TVD:6932.4 I:90.6 A:91.3 VS:4623.3



#132 MD:10974.0 TVD:6932.8 I:88.9 A:91.9 VS:4718.0

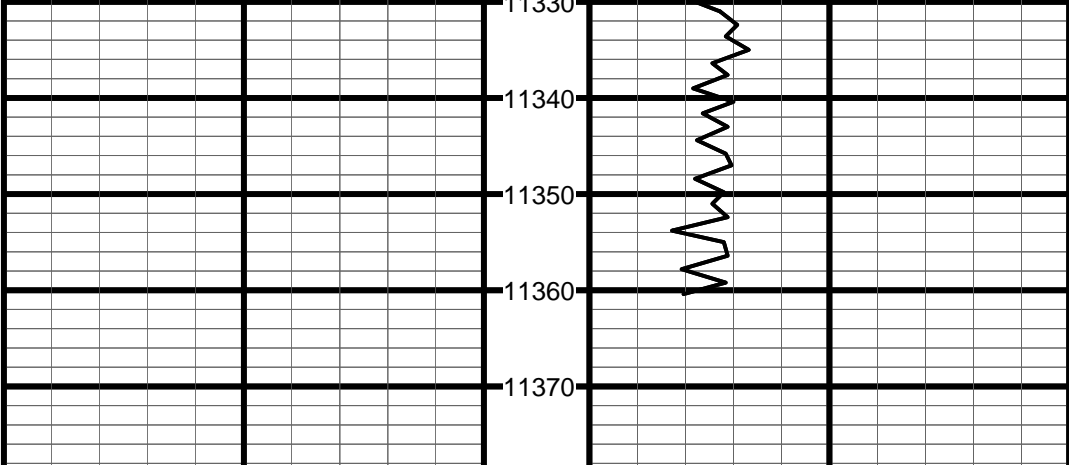
#133 MD:11069.0 TVD:6933.5 I:90.3 A:91.7 VS:4812.7



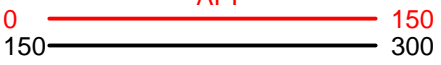
#134 MD:11164.0 TVD:6932.1 I:91.4 A:91.9 VS:4907.4

#135 MD:11259.0 TVD:6932.5 I:88.1 A:92.0 VS:5002.2

#136 MD:11308.0 TVD:6934.2 I:87.9 A:92.2 VS:5051.0

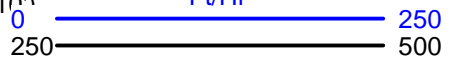


Gamma API (MD) Track: 1
API



Depth
5":100' (10")

ROP (MD) Track: 1
Ft/Hr





DYER USX AB35-68-1HN FINAL 1" MD

(Scale: 1" = 100' (100'))

Company: NOBLE ENERGY INC
 Well: DYER USX AB35-68-1HN
 Field: NORTH WATTENBERG
 Well ID: 05-123-34773
 Job Number: RM-12175
 Location: LAT: 40° 32' 9.780" N ; LONG: 104° 31' 40.152" W
 Operator 1: BOYD WOLFF
 Operator 2: CHRIS ABBOTT
 State: COLORADO
 County: WELD
 Country: US
 Elev KB: 4,895'
 Elev DF: N/A
 Elev GL: 4,871'

Comment 1: FINAL 1" MD GAMMA LOG
 Comment 2: TIE INTO SURFACE CASING AT 839'
 Comment 3:
 Comment 4:
 Comment 5:

Hole Data			Casing Record		
Size	From	To	Size	From	To
13 3/4"	0	849'	9 5/8"	0	839'
8 3/4"	849'	7,405'	7"	839'	7,396'
6 1/8"	7,405'	11,361'			

Tool Run Data	Run #1	Run #2	Run #3	Run #4	Run #5
Tool S/N	0186 XXT	5618 XXT	5618 XXT		
Cal Factor	N/A	3.62	1.99		
Gamma Offset	N/A	37'	46'		
Start Depth	849'	6,266'	7,405'		
Start Date	3/10/2012	3/12/2012	3/15/2012		
Start Time	16:00	08:00	06:30		
End Depth	6,266'	7,405'	11,361'		
End Date	3/12/2012	3/13/2012	3/17/2012		
End Time	05:30	20:00	00:30		

