

The Road to Excellence Starts with Safety

Sold To #: 300721	Ship To #: 2971909	Quote #:	Sales Order #: L;K900104621
Customer: WPX ENERGY ROCKY MOUNTAIN LLC-EBUS		Customer Rep: Brunk, Andrew	
Well Name: RGU	Well #: 22-24-198	API/UWI #: 05-103-11804	
Field: SULPHUR CREEK	City (SAP): MEEKER	County/Parish: Rio Blanco	State: Colorado
Legal Description:			
Lat: N 39.953 deg. OR N 39 deg. 57 min. 9.86 secs.		Long: W 108.34 deg. OR W -109 deg. 39 min. 37.12 secs.	
Contractor: CYCLONE 29		Rig/Platform Name/Num: CYCLONE 29	
Job Purpose: Cement Multiple Stages			Ticket Amount:
Well Type: Development Well		Job Type: Cement Multiple Stages	
Sales Person: MAYO, MARK		Srv Supervisor: WYCKOFF, RYAN	MBU ID Emp #: 476117

Activity Description	Date/Time	Cht #	Rate bbl/min	Volume bbl		Pressure psig		Comments
				Stage	Total	Tubing	Casing	
Call Out	01/21/2013 20:40							ELITE # 7
Pre-Convoy Safety Meeting	01/21/2013 22:30							ALL HES EMPLOYEES
Arrive At Loc	01/22/2013 02:00							ARRIVE AT LOCATION AT 02:00, RIG RUNNING IN THE HOLE WITH CASING, SPOTTED EQUIPMENT AND RIGGED UP
Assessment Of Location Safety Meeting	01/22/2013 02:15							ALL HES EMPLOYEES
Pre-Rig Up Safety Meeting	01/22/2013 02:20							ALL HES EMPLOYEES
Rig-Up Equipment	01/22/2013 02:30							1 HT 400 PUMP TRUCK (ELITE), 1-660 BULK TRUCK, 2 SILOS, 1 F-550 PICKUP
Pre-Job Safety Meeting	01/22/2013 06:45							ALL HES EMPLOYEES AND RIG CREW
Rig-Up Completed	01/22/2013 07:00							
Start Job	01/22/2013 07:11							TD 3933', TP 3926.85', SHOE 30.85', CSG 9 5/8" 36# FROM 0'-3474.89' 40# FROM 3474.89'-3896', OH 18" TO 60', 14 3/4" TO 1700', 13 1/2" TO TD, MUD 9.3 PPG, MSC @ 1761.87
Pressure Test	01/22/2013 07:13					3297.0		PRESSURE TEST PUMPS AND LINES TO 3000 PSI
Pump Spacer	01/22/2013 07:19		4	40	40		288.0	PUMP 40 BBLS FRESH WATER SPACER

Sold To #: 300721

Ship To #: 2971909

Quote # :

Sales Order #: L;K900104621

SUMMIT Version: 7.3.0073

Saturday, February 02, 2013 02:34:00

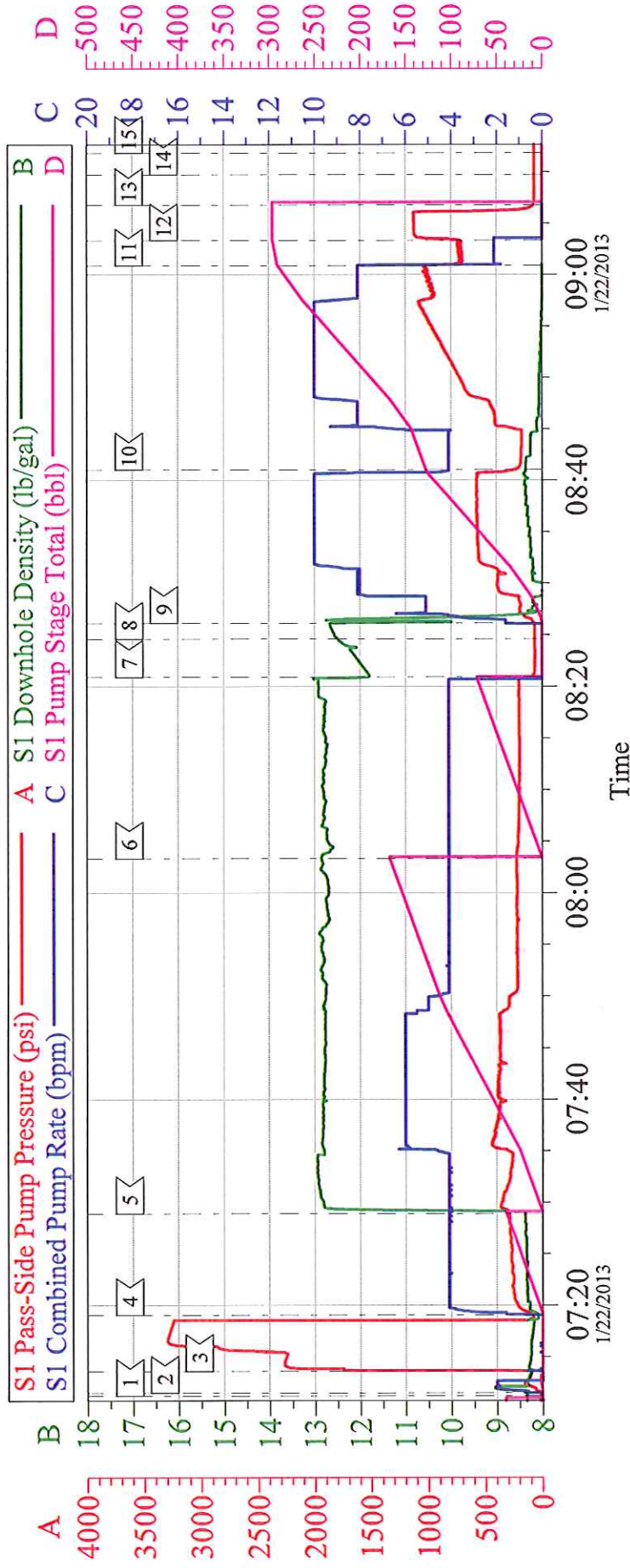
Activity Description	Date/Time	Cht #	Rate bbl/min	Volume bbl		Pressure psig		Comments
				Stage	Total	Tubing	Casing	
Pump Lead Cement	01/22/2013 07:28		6	189.1	189.1		380.0	600 SKS, 12.8 PPG, 1.77 YIELD, 9.34 GAL/SK, WEIGHT VERIFIED VIA MUD SCALES THROUGHOUT LEAD CEMENT
Pump Tail Cement	01/22/2013 08:03		4	61	61		197.0	175 SKS, 12.8 PPG, 1.96 YIELD, 10.95 GAL/SK, WEIGHT VERIFIED VIA MUD SCALES THROUGHOUT TAIL CEMENT
Shutdown	01/22/2013 08:20							
Drop Plug	01/22/2013 08:24							DROP FIRST STAGE WIPER DART
Pump Displacement	01/22/2013 08:26		10	300.5	300.5		1082.0	PUMP FRESH WATER DISPLACEMENT, WASH UP ON TOP OF PLUG AS PER COMPANY REP
Slow Rate	01/22/2013 08:41		4	126.5	126.5		447.0	SLOW RATE TO GO THROUGH STAGE TOOL
Slow Rate	01/22/2013 09:00		2	290.5	290.5		720.0	SLOW RATE TO BUMP PLUG AS PER COMPANY REP
Bump Plug	01/22/2013 09:03		2	300.5	300.5		1121.0	BUMP PLUG @ 720 PSI, PRESSURE UP TO 1121 PSI
Check Floats	01/22/2013 09:06							FLOATS HELD, 1 BBL BACK TO DISPLACEMENT TANK
Drop Opening Device For Multiple Stage Cementer	01/22/2013 09:09							WAIT 12 MIN FOR BOMB TO REACH TOOL
Open Multiple Stage Cementer	01/22/2013 09:25							OPEN MSC @ 700 PSI
Pump Spacer	01/22/2013 09:25		4	20	20		261.0	PUMP 20 BBLS FRESH WATER SPACER
Pump Tail Cement	01/22/2013 09:34		6	296.7	296.7		570.0	850 SKS, 12.8 PPG, 1.96 YIELD, 10.95 GAL/SK
Shutdown	01/22/2013 10:33							
Drop Plug	01/22/2013 10:36							PLUG AWAY WITH NO ISSUES

Cementing Job Log

Activity Description	Date/Time	Cht #	Rate bbl/min	Volume bbl		Pressure psig		Comments
				Stage	Total	Tubing	Casing	
Pump Displacement	01/22/2013 10:37		8	136.2	136.2		687.0	PUMP FRESH WATER DISPLACEMENT, WASH UP ON TOP OF PLUG AS PER COMPANY REP
Slow Rate	01/22/2013 10:53		2	126.2	126.2		453.0	SLOW RATE TO BUMP PLUG AS PER COMPANY REP
Bump Plug	01/22/2013 11:02		2	136.2	136.2		1564.0	BUMP BLUG @ 453 PSI, PRESSURE UP TO 1564 PSI
Check Floats	01/22/2013 11:07							FLOATS HELD 1 BBL BACK TO DISPLACEMENT TANK
End Job	01/22/2013 11:07							1 ADD HOUR, 40# SUGAR, NO DERRICK CHARGE
Pre-Rig Down Safety Meeting	01/22/2013 11:20							ALL HES EMPLOYEES
Rig-Down Equipment	01/22/2013 11:30							
Pre-Convoy Safety Meeting	01/22/2013 12:45							ALL HES EMPLOYEES
Crew Leave Location	01/22/2013 13:00							THANK YOU FOR USING HALLIBURTON CEMENT RYAN WYCKOFF AND CREW

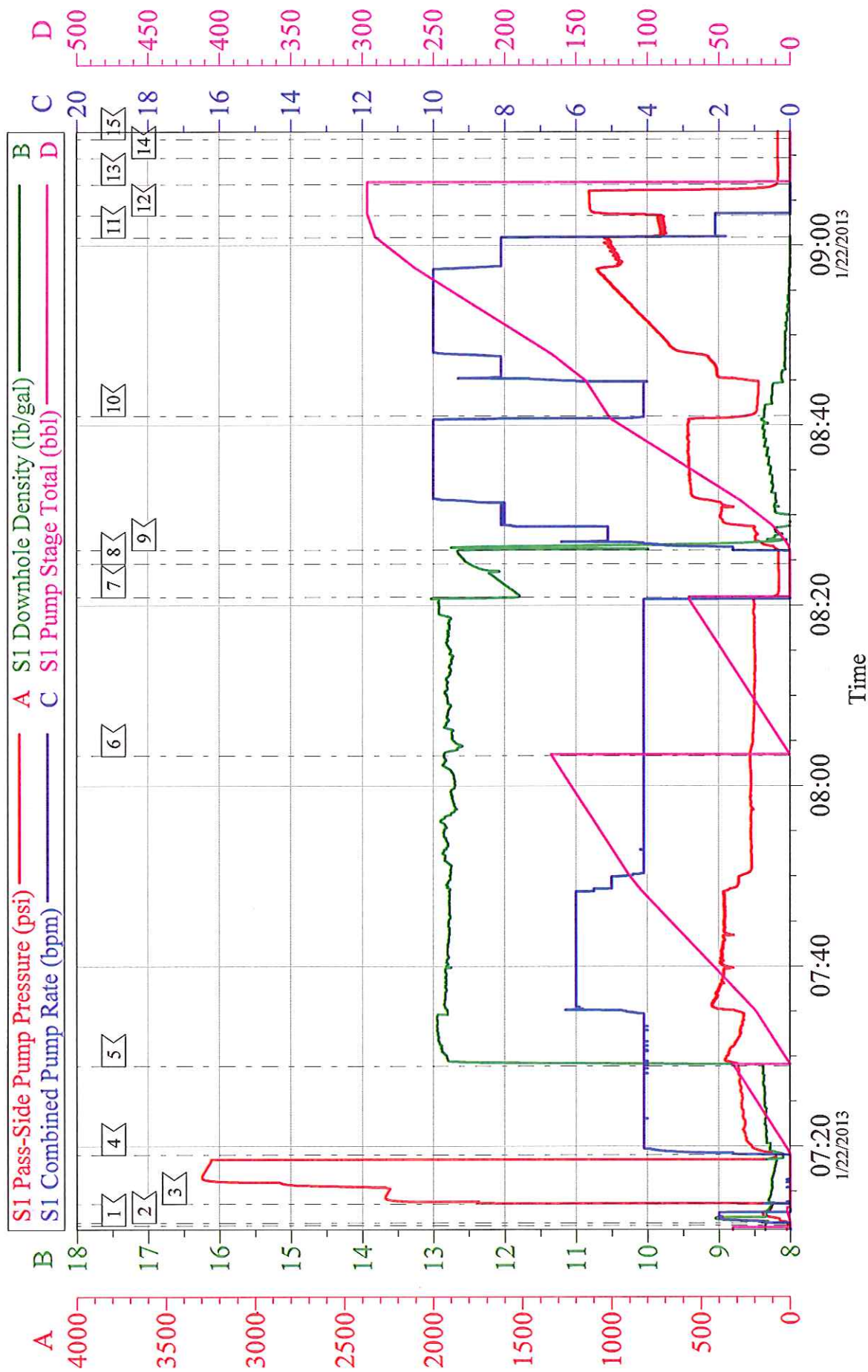
WPX RGU 22-24-198

9 5/8" SURFACE 1ST STAGE



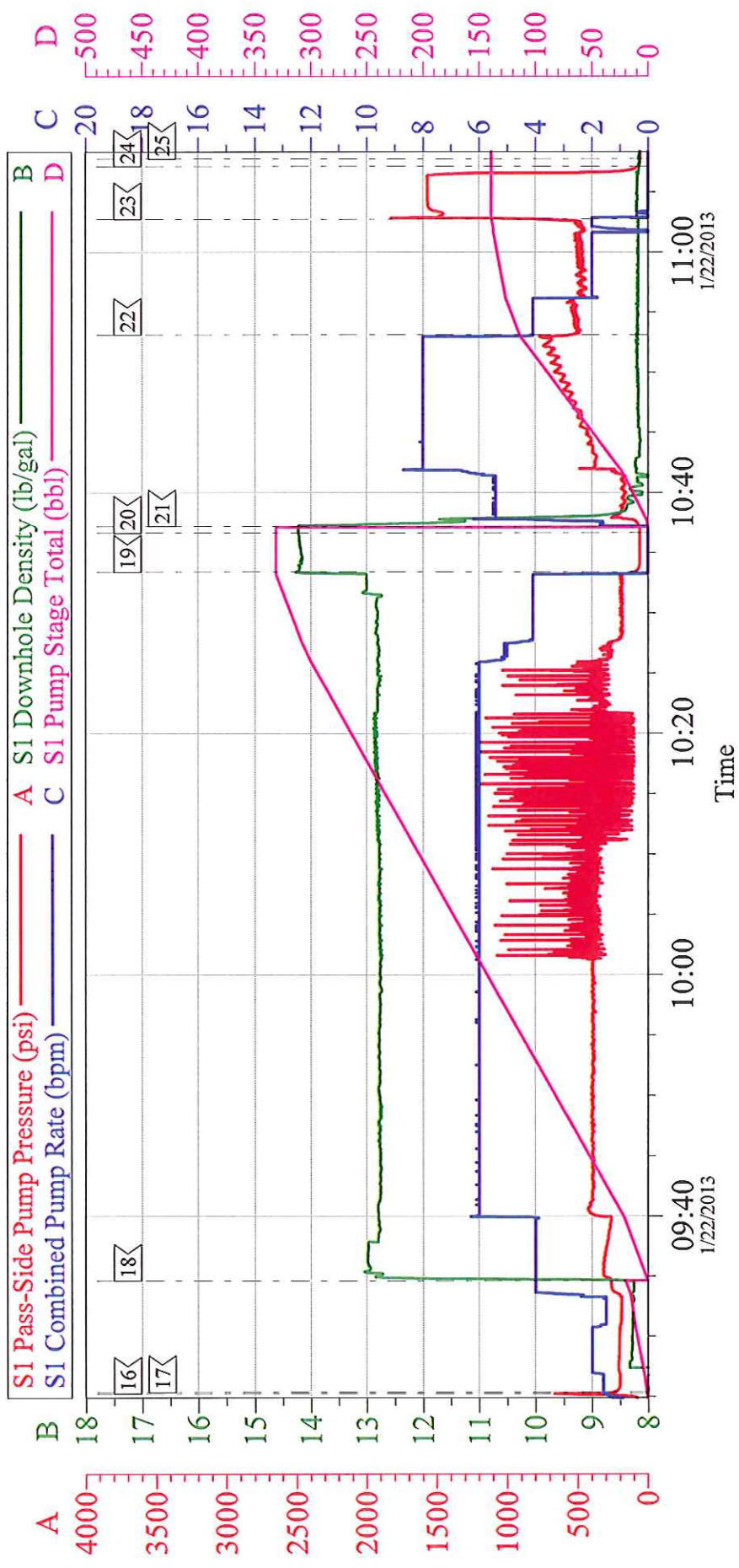
Customer: WPX	Job Date: 22-Jan-2013	Sales Order #: 900104621
Well Description: RGU 22-24-198	Job Type: SURFACE	ADC Used: YES
Company Rep: TED RAGSDALE	Cement Supervisor: RYAN WYCKOFF	Elite # 7: ADAM ANDERSON

WPX RGU 22-24-198 9 5/8" SURFACE 1ST STAGE



Customer: WPX	Job Date: 22-Jan-2013	Sales Order #: 900104621
Well Description: RGU 22-24-198	Job Type: SURFACE	ADC Used: YES
Company Rep: TED RAGSDALE	Cement Supervisor: RYAN WYCKOFF	Elite # 7: ADAM ANDERSON

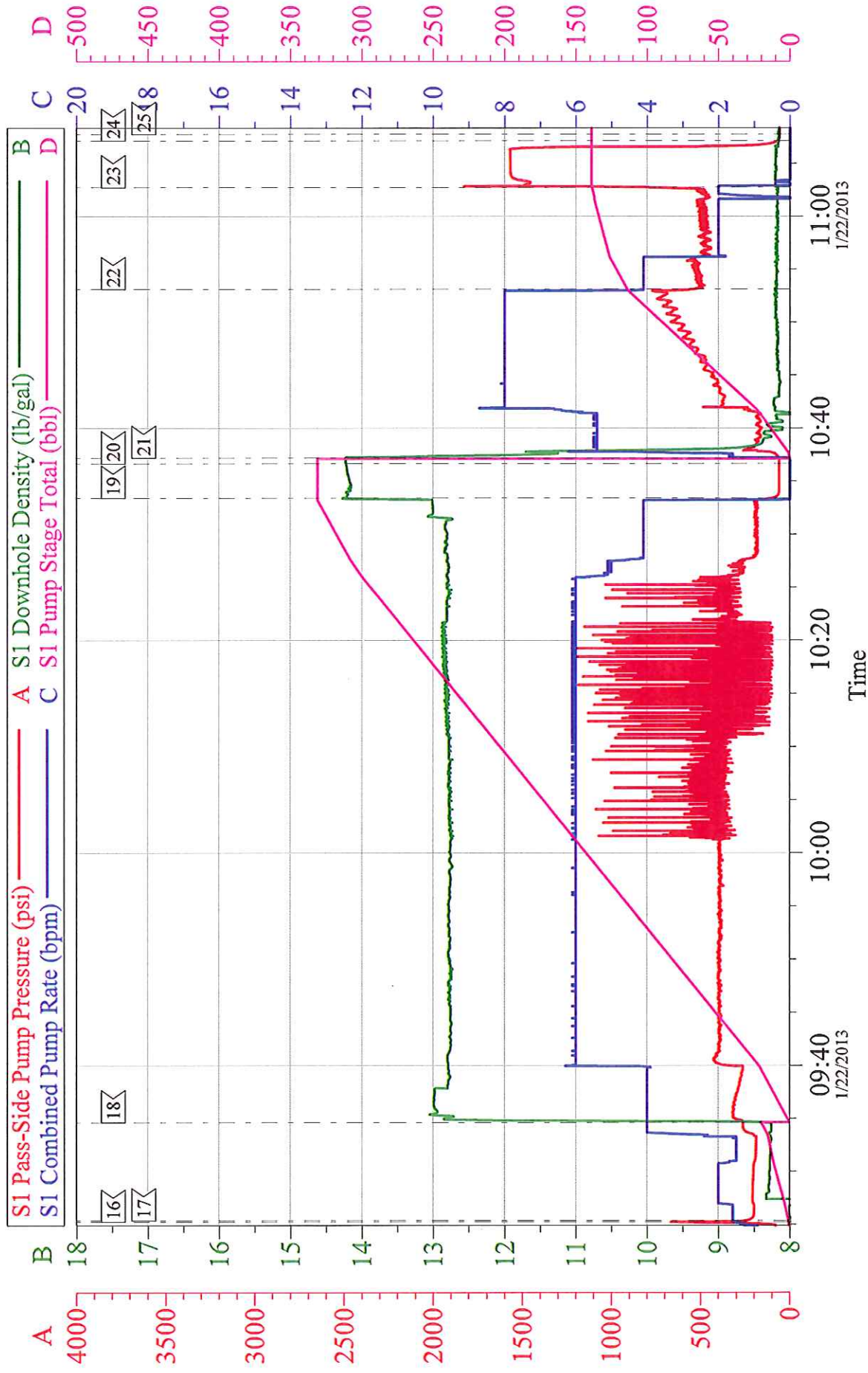
WPX RGU 22-24-198 9 5/8" SURFACE 2ND STAGE



Local Event Log			
16<	OPEN MSC	09:25:13	17< PUMP H2O SPACER 09:25:21
18<	PUMP 2ND STAGE TAIL CEMENT	09:34:36	19< SHUTDOWN 10:33:25
20<	DROP CLOSING PLUG	10:36:39	21< PUMP H2O DISPLACEMENT 10:37:11
22<	SLOW RATE	10:53:06	23< BUMP PLUG 11:02:44
24<	CHECK FLOATS	11:07:09	25< END JOB 11:07:46

Customer: WPX	Job Date: 22-Jan-2013	Sales Order #: 900104621
Well Description: RGU 22-24-198	Job Type: SURFACE	ADC Used: YES
Company Rep: TED RAGSDALE	Cement Supervisor: RYAN WYCKOFF	Elite # 7: ADAM ANDERSON

WPX RGU 22-24-198 9 5/8" SURFACE 2ND STAGE



Customer: WPX	Job Date: 22-Jan-2013	Sales Order #: 900104621
Well Description: RGU 22-24-198	Job Type: SURFACE	ADC Used: YES
Company Rep: TED RAGSDALE	Cement Supervisor: RYAN WYCKOFF	Elite # 7: ADAM ANDERSON

The Road to Excellence Starts with Safety

Sold To #: 300721		Ship To #: 2971909		Quote #:		Sales Order #: L;K900104621	
Customer: WPX ENERGY ROCKY MOUNTAIN LLC-EBUS				Customer Rep: Brunk, Andrew			
Well Name: RGU			Well #: 22-24-198			API/UWI #: 05-103-11804	
Field: SULPHUR CREEK		City (SAP): MEEKER		County/Parish: Rio Blanco		State: Colorado	
Lat: N 39.953 deg. OR N 39 deg. 57 min. 9.86 secs.				Long: W 108.34 deg. OR W -109 deg. 39 min. 37.12 secs.			
Contractor: CYCLONE 29			Rig/Platform Name/Num: CYCLONE 29				
Job Purpose: Cement Multiple Stages							
Well Type: Development Well			Job Type: Cement Multiple Stages				
Sales Person: MAYO, MARK			Srvc Supervisor: WYCKOFF, RYAN			MBU ID Emp #: 476117	

Job Personnel

HES Emp Name	Exp Hrs	Emp #	HES Emp Name	Exp Hrs	Emp #	HES Emp Name	Exp Hrs	Emp #
ANDERSON, ADAM S	0.0	456683	ENGBERG, KEVIN W	0.0	454218	WEAVER, CARLTON Russell	0.0	457698
WILSON, BENJAMIN Wallace	0.0	533647	WYCKOFF, RYAN Scott	0.0	476117			

Equipment

HES Unit #	Distance-1 way	HES Unit #	Distance-1 way	HES Unit #	Distance-1 way	HES Unit #	Distance-1 way
10297346	30 mile	10872429	30 mile	11071559	30 mile	11583932	30 mile
11808847	30 mile	4902	30 mile	4905	30 mile		

Job Hours

Date	On Location Hours	Operating Hours	Date	On Location Hours	Operating Hours	Date	On Location Hours	Operating Hours

TOTAL Total is the sum of each column separately

Job				Job Times			
Formation Name	Top	Bottom		Date	Time	Time Zone	
Formation Depth (MD)				Called Out			
Form Type		BHST		On Location			
Job depth MD	3933. ft	Job Depth TVD	3933. ft	Job Started	22 - Jan - 2013	07:11	MST
Water Depth		Wk Ht Above Floor	3. ft	Job Completed	22 - Jan - 2013	11:07	MST
Perforation Depth (MD)	From	To		Departed Loc			

Well Data

Description	New / Used	Max pressure psig	Size in	ID in	Weight lbm/ft	Thread	Grade	Top MD ft	Bottom MD ft	Top TVD ft	Bottom TVD ft
-------------	------------	-------------------	---------	-------	---------------	--------	-------	-----------	--------------	------------	---------------

Tools and Accessories

Type	Size	Qty	Make	Depth	Type	Size	Qty	Make	Depth	Type	Size	Qty	Make
Guide Shoe					Packer					Top Plug			
Float Shoe					Bridge Plug					Bottom Plug			
Float Collar					Retainer					SSR plug set			
Insert Float										Plug Container			
Stage Tool										Centralizers			

Miscellaneous Materials

Gelling Agt		Conc		Surfactant		Conc		Acid Type		Qty		Conc	%
Treatment Fld		Conc		Inhibitor		Conc		Sand Type		Size		Qty	

Fluid Data

Stage/Plug #: 1													
Fluid #	Stage Type	Fluid Name			Qty	Qty uom	Mixing Density lbm/gal	Yield ft3/sk	Mix Fluid Gal/sk	Rate bbl/min	Total Mix Fluid Gal/sk		

Stage/Plug #: 1													
Fluid #	Stage Type	Fluid Name			Qty	Qty uom	Mixing Density lbm/gal	Yield ft3/sk	Mix Fluid Gal/sk	Rate bbl/min	Total Mix Fluid Gal/sk		

Stage/Plug #: 1									
1	Fresh Water Spacer		40.00	bbl	8.33	.0	.0	.0	
2	1st Stage Lead Cement	VERSACEM (TM) SYSTEM (452010)	600.0	sacks	12.8	1.77	9.34		9.34
	0.25 lbm	POLY-E-FLAKE (101216940)							
	0.25 %	HR-5, 50 LB SK (100005050)							
	0.125 lbm	TUF FIBER 594, 15 LB BOX (101350514)							
	9.34 Gal	FRESH WATER							
3	1st Stage Tail Cement	VERSACEM (TM) SYSTEM (452010)	175.0	sacks	12.8	1.96	10.95		10.95
	10.95 Gal	FRESH WATER							
4	Displacement		330.00	bbl	8.33	.0	.0	.0	
5	Fresh Water Spacer		20.00	bbl	8.33	.0	.0	.0	
6	2nd Stage Tail	VERSACEM (TM) SYSTEM (452010)	850.0	sacks	12.8	1.96	10.95		10.95
	10.95 Gal	FRESH WATER							
7	Displacement		136.00	bbl	8.33	.0	.0	.0	
Calculated Values		Pressures		Volumes					
Displacement		Shut In: Instant		Lost Returns		Cement Slurry		Pad	
Top Of Cement		5 Min		Cement Returns		Actual Displacement		Treatment	
Frac Gradient		15 Min		Spacers		Load and Breakdown		Total Job	
Rates									
Circulating		Mixing		Displacement		Avg. Job			
Cement Left In Pipe	Amount	0 ft	Reason	Shoe Joint					
Frac Ring # 1 @	ID		Frac ring # 2 @	ID		Frac Ring # 3 @	ID	Frac Ring # 4 @	ID
The Information Stated Herein Is Correct				Customer Representative Signature					