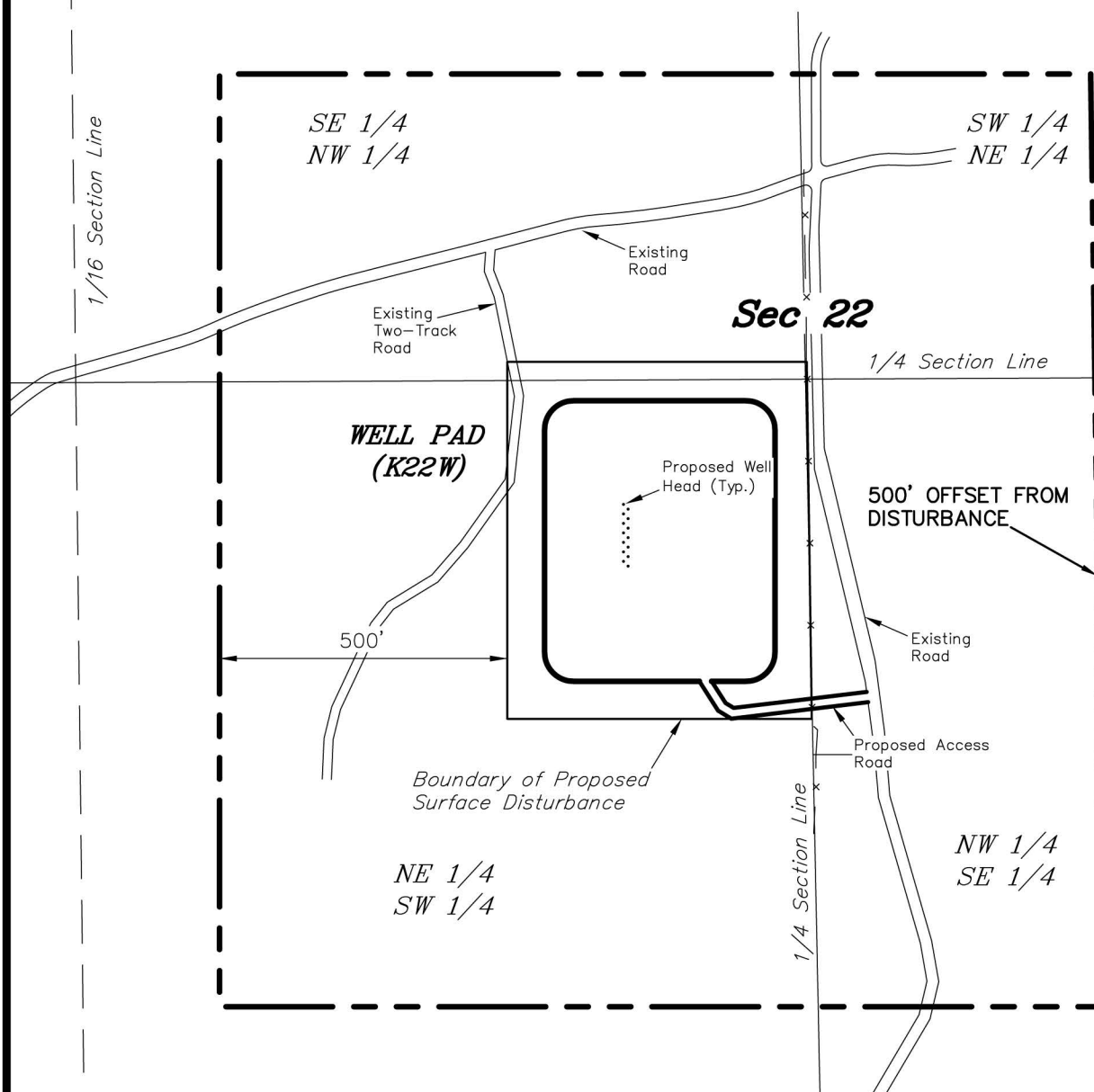


ENCANA OIL & GAS (USA) INC

SURFACE DISTURBANCE AREA

WELL PAD (K22W)

Section 22, T7S, R93W, 6th P.M.



Distances from Well Heads

WELL	BUILDING	ABOVE GROUND UTILITY	PUBLIC ROAD	RAILROAD
22-9C	3,467'	612'	612'	6.76 MILES
22-12B	3,473'	603'	603'	6.76 MILES
22-1C	3,463'	595'	595'	6.76 MILES
22-11B	3,469'	586'	586'	6.76 MILES
22-1B	3,459'	579'	579'	6.76 MILES
22-4C	3,465'	570'	570'	6.76 MILES
22-2C	3,456'	563'	563'	6.76 MILES

Distances from Well Heads

WELL	BUILDING	ABOVE GROUND UTILITY	PUBLIC ROAD	RAILROAD
22-4D	3,461'	554'	554'	6.76 MILES
22-6A	3,452'	546'	546'	6.76 MILES
22-6B	3,458'	537'	537'	6.76 MILES
22-6DD	3,448'	530'	530'	6.76 MILES
22-3C	3,454'	521'	521'	6.76 MILES
22-3D	3,445'	514'	514'	6.76 MILES
22-6D	3,451'	504'	504'	6.76 MILES

SURVEYED BY: C.D.S. DATE SURVEYED: 03-08-13
 DRAWN BY: M.W. DATE DRAWN: 05-06-13
 SCALE: 1" = 300' REVISED:

Tri State
 Land Surveying, Inc.
 180 NORTH VERNAL AVE. VERNAL, UTAH 84078
 (435) 781-2501

SHEET
 20
 of 8