

PIONEER

NATURAL RESOURCES

interoffice MEMORANDUM

DATE: April 11, 2013
TO: Don Wirth
FROM: Brian Rothkopf
RE: Raton Pressure Monitor well

The data obtained from the Raton Pressure Monitor well (Figure 1) is being used in a study to improve the ultimate recovery and economics of the field. Specifically, the actual pressures measured in the well are compared to the predicted pressures calculated using a computer simulation. Comparing the actual measured well pressures to the computer generated pressures gives confidence that the computer is correctly simulating the field performance. Once completed, various field development strategies can be tested in the simulator to optimize the field performance. Figure 2 is a production plot from the simulation showing the gas rate history in the acreage surrounding the Raton Monitor well and Figure 3 shows the Raton Monitor well pressures (white line) plotted with the computer simulated pressure (red line).

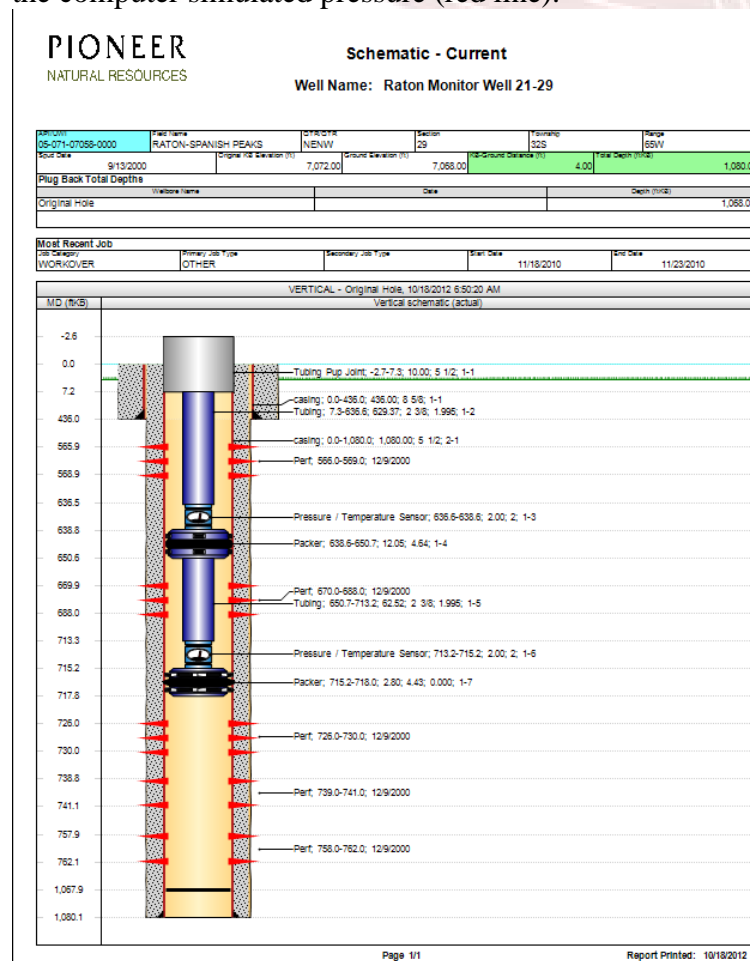


Figure 1: Raton Monitor well

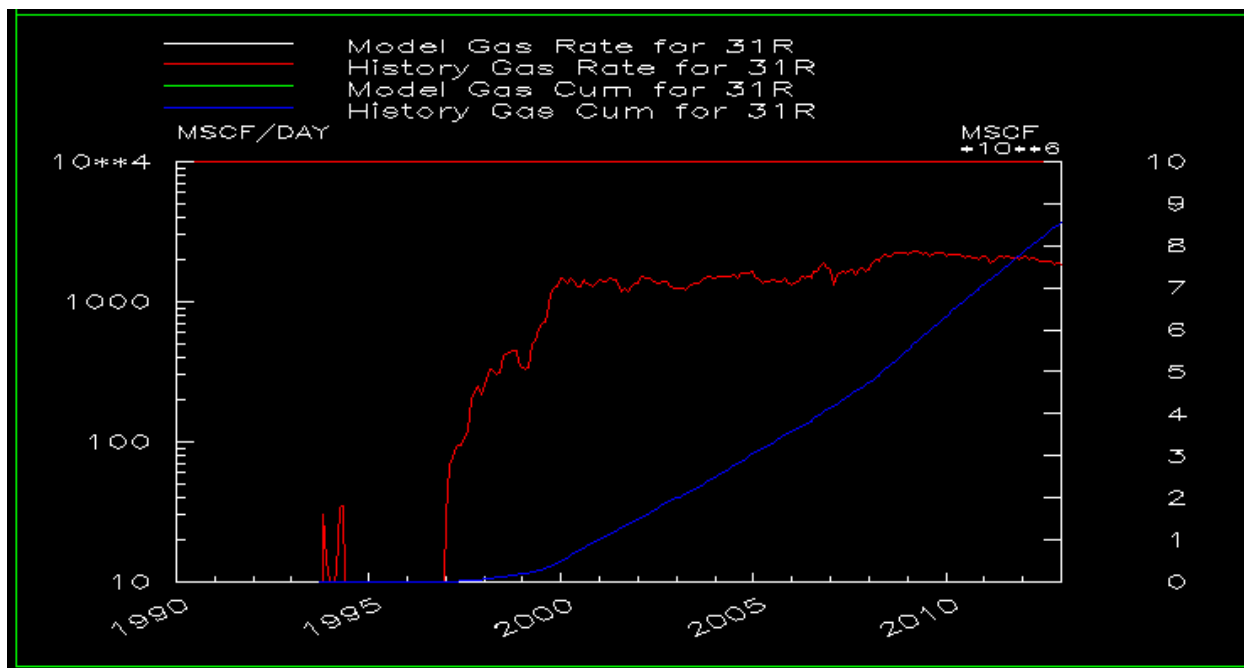


Figure 2: Gas rate in area around monitor well

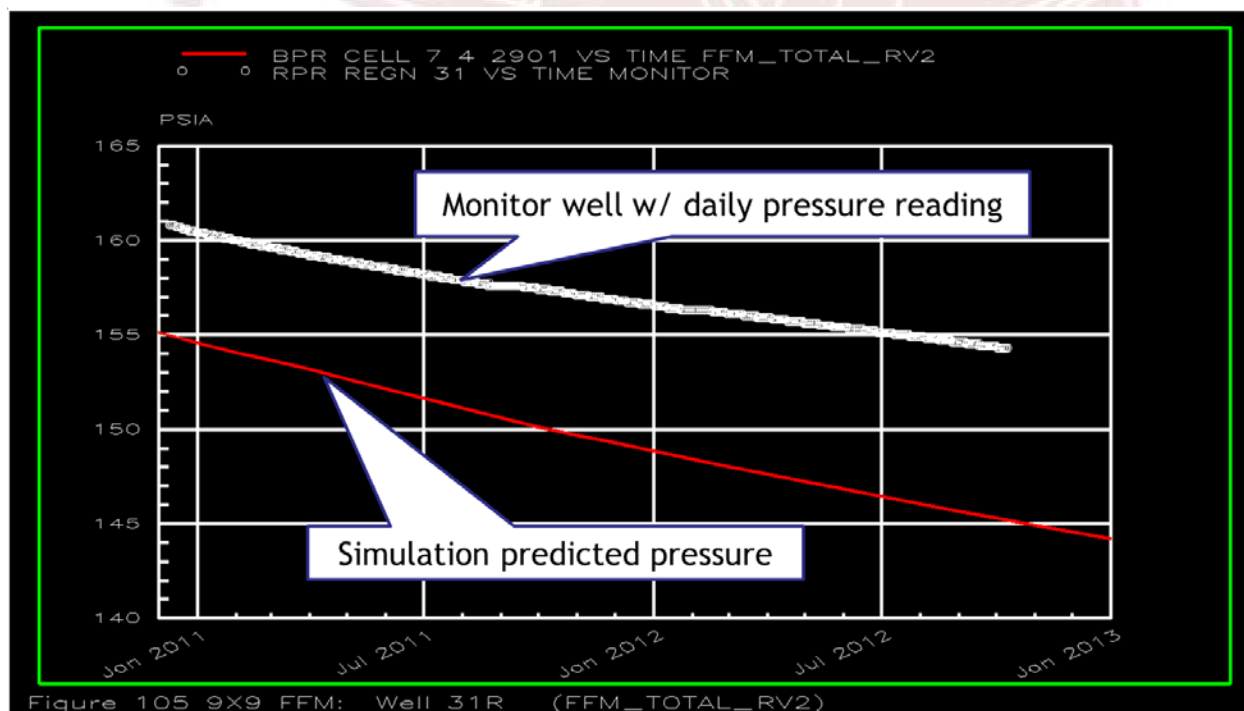


Figure 3: Compare simulation versus monitor well pressures