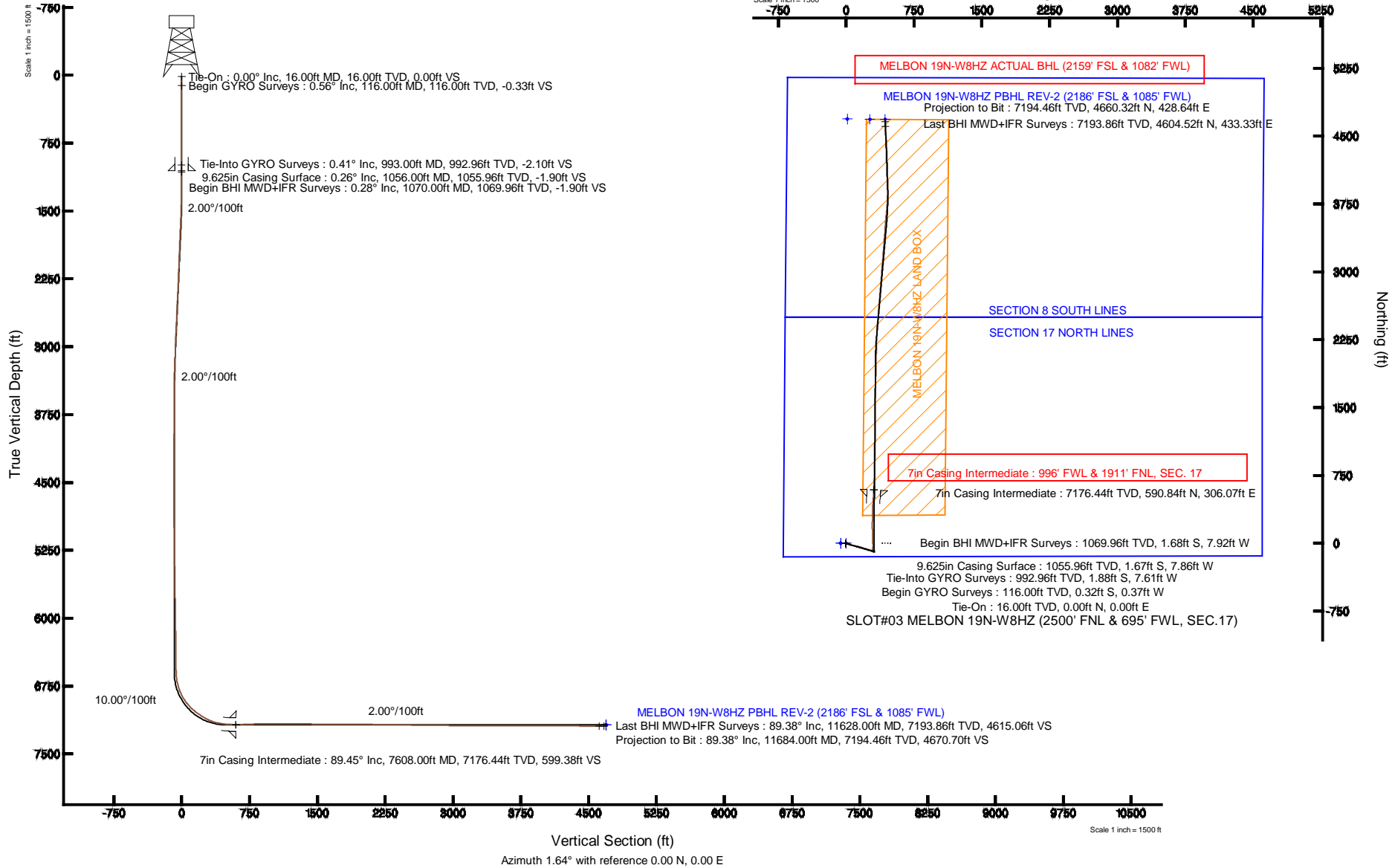


# KERR-MCGEE OIL & GAS ONSHORE LP

Location: COLORADO Slot: SLOT#03 MELBON 19N-W8HZ (2500' FNL & 695' FWL, SEC.17)  
 Field: WELD COUNTY (KERR MCGEE) Well: MELBON 19N-W8HZ  
 Facility: SEC.17-T2N-R65W Wellbore: MELBON 19N-W8HZ PWB

Plot reference wellpath is MELBON 19N-W8HZ (REV-B.0) PWB	
True vertical depths are referenced to XTREME 24 (RKB)	Grid System: NAD83 / Lambert Colorado SP, Northern Zone (501), US feet
Measured depths are referenced to XTREME 24 (RKB)	North Reference: True north
XTREME 24 (RKB) to Mean Sea Level: 4970 feet	Scale: True distance
Mean Sea Level to Mud line (At Slot: SLOT#03 MELBON 19N-W8HZ (2500' FNL & 695' FWL, SEC.17)): 0 feet	Depths are in feet
Coordinates are in feet referenced to Slot	Created by: preacin on 6/8/2013





# Actual Wellpath Report

MELBON 19N-W8HZ AWP

Page 1 of 7



## REFERENCE WELLPATH IDENTIFICATION

Operator	<b>KERR-MCGEE OIL &amp; GAS ONSHORE LP</b>	Slot	<b>SLOT#03 MELBON 19N-W8HZ (2500' FNL &amp; 695' FWL, SEC.17)</b>
Area	<b>COLORADO</b>	Well	<b>MELBON 19N-W8HZ</b>
Field	<b>WELD COUNTY (KERR MCGEE)</b>	Wellbore	<b>MELBON 19N-W8HZ AWB</b>
Facility	<b>SEC.17-T2N-R65W</b>		

## REPORT SETUP INFORMATION

Projection System	<b>NAD83 / Lambert Colorado SP, Northern Zone (501), US feet</b>	Software System	<b>WellArchitect® 4.0.0</b>
North Reference	<b>True</b>	User	<b>Precaín</b>
Scale	<b>0.999959</b>	Report Generated	<b>6/8/2013 at 6:45:25 PM</b>
Convergence at slot	<b>n/a</b>	Database/Source file	<b>WellArchitectDB/MELBON_19N-W8HZ_AWB.xml</b>

## WELLPATH LOCATION

	Local coordinates		Grid coordinates		Geographic coordinates	
	North[ft]	East[ft]	Easting[US ft]	Northing[US ft]	Latitude	Longitude
Slot Location	-0.61	-310.19	3225099.39	1294538.53	<b>40°08'20.749"N</b>	<b>104°41'41.500"W</b>
Facility Reference Pt			3225409.56	1294541.95	<b>40°08'20.755"N</b>	<b>104°41'37.506"W</b>
Field Reference Pt			<b>3197771.84</b>	<b>1268891.29</b>	40°04'09.600"N	104°47'36.000"W

## WELLPATH DATUM

Calculation method	<b>Minimum curvature</b>	XTREME 24 (RKB) to Facility Vertical Datum	<b>4970.00ft</b>
Horizontal Reference Pt	<b>Slot</b>	XTREME 24 (RKB) to Mean Sea Level	<b>4970.00ft</b>
Vertical Reference Pt	<b>XTREME 24 (RKB)</b>	XTREME 24 (RKB) to Mud Line at Slot (SLOT#03 MELBON 19N-W8HZ (2500' FNL & 695' FWL, SEC.17))	<b>4970.00ft</b>
MD Reference Pt	<b>XTREME 24 (RKB)</b>	Section Origin	<b>N 0.00, E 0.00 ft</b>
Field Vertical Reference	<b>Mean Sea Level</b>	Section Azimuth	<b>1.64°</b>



# Actual Wellpath Report

MELBON 19N-W8HZ AWP

Page 2 of 7



REFERENCE WELLPATH IDENTIFICATION			
Operator	KERR-MCGEE OIL & GAS ONSHORE LP	Slot	SLOT#03 MELBON 19N-W8HZ (2500' FNL & 695' FWL, SEC.17)
Area	COLORADO	Well	MELBON 19N-W8HZ
Field	WELD COUNTY (KERR MCGEE)	Wellbore	MELBON 19N-W8HZ AWB
Facility	SEC.17-T2N-R65W		

WELLPATH DATA (151 stations) † = interpolated/extrapolated station								
MD [ft]	Inclination [°]	Azimuth [°]	TVD [ft]	Vert Sect [ft]	North [ft]	East [ft]	DLS [°/100ft]	Comments
0.00†	0.000	229.040	0.00	0.00	0.00	0.00	0.00	
16.00	0.000	229.040	16.00	0.00	0.00	0.00	0.00	Tie-On
116.00	0.560	229.040	116.00	-0.33	-0.32	-0.37	0.56	Begin GYRO Surveys
216.00	0.760	246.080	215.99	-0.95	-0.91	-1.34	0.28	
316.00	0.690	256.080	315.98	-1.40	-1.32	-2.54	0.14	
416.00	0.650	282.720	415.98	-1.45	-1.34	-3.67	0.31	
516.00	0.510	261.900	515.97	-1.41	-1.28	-4.67	0.25	
616.00	0.370	282.600	615.97	-1.43	-1.27	-5.42	0.21	
716.00	0.500	248.270	715.97	-1.54	-1.36	-6.14	0.29	
816.00	0.340	238.820	815.96	-1.87	-1.68	-6.80	0.17	
916.00	0.330	235.590	915.96	-2.20	-2.00	-7.29	0.02	
993.00	0.410	331.600	992.96	-2.10	-1.88	-7.61	0.72	Tie-Into GYRO Surveys
1070.00	0.280	257.570	1069.96	-1.90	-1.68	-7.92	0.56	Begin BHI MWD+IFR Surveys
1164.00	0.400	269.530	1163.96	-1.97	-1.73	-8.47	0.15	
1258.00	1.820	100.490	1257.95	-2.21	-2.00	-7.33	2.36	
1351.00	3.920	105.980	1350.82	-3.23	-3.15	-2.83	2.27	
1445.00	5.940	110.040	1444.47	-5.56	-5.70	4.83	2.18	
1538.00	7.910	105.520	1536.79	-8.61	-9.06	15.52	2.20	
1632.00	9.340	104.850	1629.72	-11.91	-12.75	29.13	1.53	
1725.00	11.270	106.270	1721.22	-15.93	-17.23	45.15	2.09	
1819.00	10.960	103.850	1813.46	-20.13	-21.94	62.64	0.60	
1912.00	10.330	104.070	1904.86	-23.80	-26.08	79.31	0.68	
1998.00	10.280	99.400	1989.47	-26.49	-29.21	94.36	0.97	
2083.00	11.110	101.630	2072.99	-28.94	-32.10	109.87	1.09	
2169.00	9.970	100.720	2157.54	-31.55	-35.16	125.30	1.34	
2254.00	9.880	105.670	2241.27	-34.48	-38.49	139.55	1.01	
2339.00	10.120	106.590	2324.98	-38.17	-42.60	153.73	0.34	
2425.00	10.700	109.950	2409.56	-42.63	-47.48	168.47	0.98	
2510.00	11.440	108.040	2492.98	-47.49	-52.78	183.91	0.97	
2595.00	9.470	106.990	2576.57	-51.72	-57.43	198.61	2.33	
2681.00	9.710	104.330	2661.36	-55.18	-61.30	212.40	0.59	
2766.00	9.520	105.210	2745.17	-58.41	-64.92	226.13	0.28	
2852.00	9.940	107.450	2829.93	-62.10	-69.01	240.07	0.66	
2937.00	8.480	108.510	2913.84	-65.91	-73.20	253.02	1.73	
3023.00	7.650	106.580	2998.98	-69.23	-76.84	264.52	1.02	
3108.00	6.740	107.330	3083.31	-72.03	-79.94	274.70	1.08	
3194.00	5.830	106.780	3168.80	-74.54	-82.71	283.70	1.06	
3279.00	4.970	106.280	3253.42	-76.60	-84.99	291.37	1.01	
3364.00	4.290	101.840	3338.14	-78.09	-86.67	298.01	0.90	
3450.00	3.660	97.260	3423.93	-78.93	-87.68	303.88	0.82	
3535.00	2.870	98.090	3508.80	-79.43	-88.32	308.68	0.93	
3620.00	1.570	85.960	3593.73	-79.56	-88.54	311.95	1.62	
3706.00	0.900	108.020	3679.71	-79.63	-88.66	313.77	0.94	
3791.00	1.760	155.190	3764.69	-80.99	-90.06	314.95	1.56	
3876.00	0.650	159.990	3849.67	-82.60	-91.69	315.66	1.31	



# Actual Wellpath Report

MELBON 19N-W8HZ AWP

Page 3 of 7



## REFERENCE WELLPATH IDENTIFICATION

Operator	KERR-MCGEE OIL & GAS ONSHORE LP	Slot	SLOT#03 MELBON 19N-W8HZ (2500' FNL & 695' FWL, SEC.17)
Area	COLORADO	Well	MELBON 19N-W8HZ
Field	WELD COUNTY (KERR MCGEE)	Wellbore	MELBON 19N-W8HZ AWP
Facility	SEC.17-T2N-R65W		

## WELLPATH DATA (151 stations)

MD [ft]	Inclination [°]	Azimuth [°]	TVD [ft]	Vert Sect [ft]	North [ft]	East [ft]	DLS [°/100ft]	Comments
3961.00	0.890	144.690	3934.66	-83.58	-92.68	316.21	0.37	
4047.00	0.790	216.100	4020.65	-84.60	-93.71	316.25	1.14	
4132.00	0.820	201.250	4105.65	-85.66	-94.75	315.68	0.25	
4217.00	0.730	216.200	4190.64	-86.68	-95.75	315.14	0.26	
4302.00	1.390	247.340	4275.62	-87.55	-96.59	313.87	1.00	
4388.00	2.010	255.420	4361.59	-88.40	-97.37	311.45	0.77	
4473.00	0.970	259.380	4446.56	-88.97	-97.88	309.30	1.23	
4558.00	0.930	303.070	4531.54	-88.76	-97.63	308.01	0.83	
4644.00	0.970	293.680	4617.53	-88.12	-96.96	306.76	0.19	
4729.00	1.290	287.920	4702.52	-87.59	-96.38	305.19	0.40	
4814.00	0.500	321.260	4787.51	-87.04	-95.79	304.05	1.08	
4899.00	0.890	13.060	4872.50	-86.11	-94.86	303.97	0.82	
4984.00	1.230	29.630	4957.49	-84.65	-93.42	304.57	0.53	
5070.00	1.380	43.250	5043.46	-83.06	-91.87	305.73	0.40	
5155.00	0.990	58.060	5128.45	-81.89	-90.73	307.06	0.58	
5240.00	0.900	55.430	5213.43	-81.09	-89.97	308.23	0.12	
5325.00	0.760	35.020	5298.42	-80.23	-89.13	309.10	0.38	
5411.00	0.940	14.150	5384.42	-79.06	-87.97	309.60	0.41	
5496.00	0.860	349.850	5469.41	-77.76	-86.67	309.66	0.46	
5581.00	0.900	339.200	5554.40	-76.52	-85.42	309.31	0.20	
5667.00	0.940	333.600	5640.38	-75.27	-84.16	308.76	0.11	
5752.00	0.980	332.850	5725.37	-74.02	-82.88	308.12	0.05	
5837.00	1.180	329.710	5810.36	-72.64	-81.48	307.34	0.25	
5923.00	0.980	306.770	5896.34	-71.46	-80.28	306.31	0.55	
6008.00	0.930	316.250	5981.33	-70.56	-79.34	305.25	0.19	
6093.00	1.390	314.620	6066.31	-69.37	-78.12	304.04	0.54	
6178.00	1.260	323.070	6151.29	-67.94	-76.65	302.74	0.28	
6264.00	1.390	302.610	6237.27	-66.66	-75.33	301.30	0.57	
6348.00	1.550	312.380	6321.24	-65.40	-74.02	299.60	0.35	
6434.00	1.320	294.890	6407.21	-64.25	-72.82	297.84	0.57	
6520.00	2.180	289.870	6493.17	-63.34	-71.84	295.40	1.01	
6568.00	1.340	280.080	6541.15	-62.98	-71.43	293.99	1.85	
6611.00	1.300	302.280	6584.14	-62.65	-71.09	293.08	1.19	
6654.00	4.220	3.230	6627.09	-60.82	-69.25	292.76	8.75	
6696.00	8.390	3.490	6668.83	-56.21	-64.64	293.04	9.93	
6739.00	12.340	8.480	6711.12	-48.51	-56.96	293.90	9.41	
6782.00	15.920	6.860	6752.81	-38.07	-46.56	295.29	8.38	
6824.00	20.360	1.830	6792.72	-25.02	-33.53	296.21	11.20	
6867.00	24.400	358.610	6832.47	-8.67	-17.17	296.23	9.82	
6909.00	29.080	356.410	6869.97	10.17	1.70	295.38	11.39	
6952.00	34.080	356.680	6906.59	32.59	24.17	294.03	11.63	
6995.00	38.890	358.250	6941.15	58.09	49.71	292.92	11.39	
7037.00	42.970	358.570	6972.88	85.55	77.21	292.16	9.73	
7080.00	47.300	358.720	7003.20	115.98	107.67	291.44	10.07	
7122.00	50.300	359.200	7030.87	147.54	139.26	290.87	7.19	



# Actual Wellpath Report

MELBON 19N-W8HZ AWP

Page 4 of 7



## REFERENCE WELLPATH IDENTIFICATION

Operator	KERR-MCGEE OIL & GAS ONSHORE LP	Slot	SLOT#03 MELBON 19N-W8HZ (2500' FNL & 695' FWL, SEC.17)
Area	COLORADO	Well	MELBON 19N-W8HZ
Field	WELD COUNTY (KERR MCGEE)	Wellbore	MELBON 19N-W8HZ AWB
Facility	SEC.17-T2N-R65W		

## WELLPATH DATA (151 stations) † = interpolated/extrapolated station

MD [ft]	Inclination [°]	Azimuth [°]	TVD [ft]	Vert Sect [ft]	North [ft]	East [ft]	DLS [°/100ft]	Comments
7165.00	53.690	359.650	7057.34	181.40	173.14	290.53	7.93	
7208.00	57.940	0.130	7081.49	216.94	208.70	290.47	9.93	
7250.00	61.630	0.940	7102.63	253.22	244.98	290.81	8.94	
7293.00	65.500	0.420	7121.77	291.71	283.48	291.26	9.06	
7335.00	69.900	1.480	7137.70	330.56	322.32	291.91	10.73	
7378.00	75.310	2.350	7150.55	371.58	363.32	293.29	12.73	
7421.00	78.920	2.820	7160.14	413.48	405.18	295.18	8.46	
7464.00	81.480	3.680	7167.46	455.83	447.48	297.58	6.27	
7506.00	85.490	3.500	7172.22	497.53	489.12	300.20	9.56	
7549.00	87.440	3.090	7174.87	540.43	531.97	302.66	4.63	
7564.00	88.020	3.510	7175.47	555.41	546.93	303.53	4.77	
7608.00†	89.450	3.118	7176.44	599.38	590.84	306.07	3.37	7" Casing Point
7692.00	92.180	2.370	7175.24	683.35	674.73	310.09	3.37	
7735.00	92.710	2.100	7173.41	726.30	717.66	311.76	1.38	
7820.00	92.700	1.740	7169.40	811.21	802.52	314.61	0.42	
7906.00	90.510	0.980	7166.99	897.17	888.45	316.65	2.70	
7991.00	90.400	0.610	7166.31	982.15	973.44	317.83	0.45	
8076.00	90.060	1.020	7165.97	1067.14	1058.43	319.04	0.63	
8162.00	89.010	359.470	7166.67	1153.11	1144.43	319.41	2.18	
8248.00	89.380	359.490	7167.88	1239.04	1230.41	318.63	0.43	
8333.00	90.000	0.200	7168.34	1324.00	1315.41	318.40	1.11	
8418.00	88.550	0.600	7169.41	1408.97	1400.40	318.99	1.77	
8504.00	89.070	1.070	7171.20	1494.94	1486.37	320.24	0.81	
8589.00	90.120	0.950	7171.80	1579.93	1571.35	321.74	1.24	
8674.00	88.910	1.250	7172.52	1664.92	1656.33	323.37	1.47	
8760.00	89.410	0.870	7173.78	1750.91	1742.31	324.96	0.73	
8844.00	89.410	1.880	7174.64	1834.90	1826.28	326.98	1.20	
8929.00	89.960	1.100	7175.11	1919.90	1911.25	329.19	1.12	
9015.00	90.520	1.040	7174.75	2005.90	1997.23	330.79	0.65	
9100.00	89.130	1.310	7175.01	2090.89	2082.21	332.54	1.67	
9185.00	89.600	0.750	7175.95	2175.88	2167.19	334.06	0.86	
9270.00	89.070	2.600	7176.94	2260.87	2252.15	336.55	2.26	
9356.00	89.290	2.850	7178.17	2346.85	2338.04	340.64	0.39	
9441.00	89.070	5.210	7179.39	2431.76	2422.82	346.61	2.79	
9526.00	89.530	4.860	7180.43	2516.60	2507.48	354.07	0.68	
9612.00	88.580	4.690	7181.84	2602.46	2593.17	361.23	1.12	
9697.00	89.070	4.720	7183.59	2687.32	2677.87	368.20	0.58	
9782.00	89.660	4.590	7184.53	2772.20	2762.58	375.10	0.71	
9867.00	90.120	4.910	7184.69	2857.07	2847.29	382.13	0.66	
9953.00	88.730	4.290	7185.56	2942.95	2933.00	389.03	1.77	
10038.00	89.190	4.310	7187.10	3027.85	3017.75	395.40	0.54	
10123.00	89.470	4.800	7188.09	3112.73	3102.48	402.15	0.66	
10208.00	90.030	4.830	7188.46	3197.60	3187.17	409.29	0.66	
10293.00	89.660	4.150	7188.69	3282.49	3271.91	415.94	0.91	
10379.00	90.300	3.870	7188.72	3368.42	3357.70	421.96	0.81	



# Actual Wellpath Report

MELBON 19N-W8HZ AWP

Page 5 of 7



## REFERENCE WELLPATH IDENTIFICATION

Operator	KERR-MCGEE OIL & GAS ONSHORE LP	Slot	SLOT#03 MELBON 19N-W8HZ (2500' FNL & 695' FWL, SEC.17)
Area	COLORADO	Well	MELBON 19N-W8HZ
Field	WELD COUNTY (KERR MCGEE)	Wellbore	MELBON 19N-W8HZ AWB
Facility	SEC.17-T2N-R65W		

## WELLPATH DATA (151 stations)

MD [ft]	Inclination [°]	Azimuth [°]	TVD [ft]	Vert Sect [ft]	North [ft]	East [ft]	DLS [°/100ft]	Comments
10464.00	88.950	4.730	7189.28	3453.32	3442.46	428.33	1.88	
10549.00	89.690	4.700	7190.29	3538.19	3527.16	435.31	0.87	
10635.00	90.460	5.000	7190.18	3624.06	3612.85	442.59	0.96	
10720.00	91.410	4.700	7188.79	3708.91	3697.54	449.77	1.17	
10805.00	90.400	3.520	7187.45	3793.82	3782.31	455.86	1.83	
10891.00	90.330	1.310	7186.90	3879.81	3868.22	459.49	2.57	
10976.00	89.500	359.480	7187.02	3964.78	3953.22	460.07	2.36	
11061.00	89.410	358.990	7187.83	4049.70	4038.20	458.94	0.59	
11146.00	89.100	358.090	7188.94	4134.57	4123.17	456.77	1.12	
11231.00	89.810	357.910	7189.75	4219.39	4208.11	453.81	0.86	
11317.00	89.500	357.810	7190.26	4305.20	4294.05	450.59	0.38	
11402.00	89.440	357.350	7191.05	4389.99	4378.97	447.00	0.55	
11487.00	89.290	357.050	7191.99	4474.73	4463.86	442.85	0.39	
11573.00	89.160	355.930	7193.16	4560.37	4549.69	437.59	1.31	
11628.00	89.380	355.190	7193.86	4615.06	4604.52	433.33	1.40	Last BHI MWD+IFR Surveys
11684.00	89.380	355.190	7194.46	4670.70	4660.32	428.64	0.00	Projection to Bit

## HOLE & CASING SECTIONS - Ref Wellbore: MELBON 19N-W8HZ AWB Ref Wellpath: MELBON 19N-W8HZ AWP

String/Diameter	Start MD [ft]	End MD [ft]	Interval [ft]	Start TVD [ft]	End TVD [ft]	Start N/S [ft]	Start E/W [ft]	End N/S [ft]	End E/W [ft]
13.5in Open Hole	16.00	1066.00	1050.00	16.00	1065.96	0.00	0.00	-1.67	-7.90
9.625in Casing Surface	16.00	1056.00	1040.00	16.00	1055.96	0.00	0.00	-1.67	-7.86
8.75in Open Hole	1056.00	7620.00	6564.00	1055.96	7176.51	-1.67	-7.86	602.83	306.71
7in Casing Intermediate	16.00	7608.00	7592.00	16.00	7176.44	0.00	0.00	590.84	306.07
6.125in Open Hole	7608.00	11684.00	4076.00	7176.44	7194.46	590.84	306.07	4660.32	428.64



# Actual Wellpath Report

MELBON 19N-W8HZ AWP

Page 6 of 7



## REFERENCE WELLPATH IDENTIFICATION

Operator	KERR-MCGEE OIL & GAS ONSHORE LP	Slot	SLOT#03 MELBON 19N-W8HZ (2500' FNL & 695' FWL, SEC.17)
Area	COLORADO	Well	MELBON 19N-W8HZ
Field	WELD COUNTY (KERR MCGEE)	Wellbore	MELBON 19N-W8HZ AWB
Facility	SEC.17-T2N-R65W		

## TARGETS

Name	MD [ft]	TVD [ft]	North [ft]	East [ft]	Grid East [US ft]	Grid North [US ft]	Latitude	Longitude	Shape
MELBON 19N-W8HZ BHL ON PLAT (2186' FSL & 915' FWL)		7180.00	4685.96	262.23	3225319.05	1299226.47	40°09'07.056"N	104°41'38.123"W	point
MELBON 19N-W8HZ PBHL REV-2 (2186' FSL & 1085' FWL)		7180.00	4685.96	432.23	3225489.04	1299228.01	40°09'07.056"N	104°41'35.934"W	point
FIELDS X8-12 150' RADIUS		7200.00	4688.69	13.98	3225070.80	1299226.95	40°09'07.083"N	104°41'41.320"W	circle
MELBON 19N-W8HZ LAND BOX		7200.00	0.00	0.00	3225099.39	1294538.53	40°08'20.749"N	104°41'41.500"W	polygon
SECTION 17 NORTH LINES		7200.00	0.00	-59.80	3225039.60	1294537.98	40°08'20.749"N	104°41'42.270"W	polygon
SECTION 8 SOUTH LINES		7200.00	0.00	-59.80	3225039.60	1294537.98	40°08'20.749"N	104°41'42.270"W	polygon

## WELLPATH COMPOSITION - Ref Wellbore: MELBON 19N-W8HZ AWB Ref Wellpath: MELBON 19N-W8HZ AWP

Start MD [ft]	End MD [ft]	Positional Uncertainty Model	Log Name/Comment	Wellbore
16.00	993.00	Generic gyro - continuous (Standard)	MS ENERGY GYRODATA SURVEYS <116-993>	MELBON 19N-W8HZ AWB
993.00	7564.00	NaviTrak (MAGCORR,IFR)	BHI MWD+IFR Surveys 8 3/4" HOLE <1070-7564>	MELBON 19N-W8HZ AWB
7564.00	11628.00	OnTrak (MAGCORR,IFR)	BHI MWD+IFR Surveys 6 1/8" HOLE <7692-11628>	MELBON 19N-W8HZ AWB
11628.00	11684.00	Blind Drilling (std)	Projection to bit	MELBON 19N-W8HZ AWB



# Actual Wellpath Report

MELBON 19N-W8HZ AWP

Page 7 of 7



REFERENCE WELLPATH IDENTIFICATION			
Operator	KERR-MCGEE OIL & GAS ONSHORE LP	Slot	SLOT#03 MELBON 19N-W8HZ (2500' FNL & 695' FWL, SEC.17)
Area	COLORADO	Well	MELBON 19N-W8HZ
Field	WELD COUNTY (KERR MCGEE)	Wellbore	MELBON 19N-W8HZ AWB
Facility	SEC.17-T2N-R65W		

WELLPATH COMMENTS				
MD [ft]	Inclination [°]	Azimuth [°]	TVD [ft]	Comment
16.00	0.000	229.040	16.00	Tie-On
116.00	0.560	229.040	116.00	Begin GYRO Surveys
993.00	0.410	331.600	992.96	Tie-Into GYRO Surveys
1070.00	0.280	257.570	1069.96	Begin BHI MWD+IFR Surveys
7608.00	89.450	3.118	7176.44	7" Casing Point
11628.00	89.380	355.190	7193.86	Last BHI MWD+IFR Surveys
11684.00	89.380	355.190	7194.46	Projection to Bit