

The Road to Excellence Starts with Safety

Sold To #: 300721	Ship To #: 2975104	Quote #:	Sales Order #: 900143484
Customer: WPX ENERGY ROCKY MOUNTAIN LLC-EBUS		Customer Rep: Brunk, Andrew	
Well Name: RGU	Well #: 331-24-198	API/UWI #: 05-103-11807	
Field: SULPHUR CREEK	City (SAP): MEEKER	County/Parish: Rio Blanco	State: Colorado
Lat: N 39.953 deg. OR N 39 deg. 57 min. 9.972 secs.		Long: W 108.34 deg. OR W -109 deg. 39 min. 37.058 secs.	
Contractor: CYCLONE 29	Rig/Platform Name/Num: CYCLONE 29		
Job Purpose: Cement Multiple Stages			
Well Type: Development Well		Job Type: Cement Multiple Stages	
Sales Person: MAYO, MARK		Srvc Supervisor: CASTILLO, FRANCISCO	MBU ID Emp #: 513620

Job Personnel

HES Emp Name	Exp Hrs	Emp #	HES Emp Name	Exp Hrs	Emp #	HES Emp Name	Exp Hrs	Emp #
BLUST, CHARLES Thomas	10.5	386662	BRENNECKE, ANDREW Bailey	10.5	486345			
CASTILLO, FRANCISCO P	10.5	513620	SMITH, CHRISTOPHER Scott	10.5	452619	WOLFE, JON P	10.5	485217

Equipment

HES Unit #	Distance-1 way	HES Unit #	Distance-1 way	HES Unit #	Distance-1 way	HES Unit #	Distance-1 way
10867423	30 mile	10871245	30 mile	11259884	30 mile	11562538	30 mile
11808831	30 mile						

Job Hours

Date	On Location Hours	Operating Hours	Date	On Location Hours	Operating Hours	Date	On Location Hours	Operating Hours
1/25/13	10.5	3.5						

TOTAL Total is the sum of each column separately

Job

Job Times

Formation Name	Formation Depth (MD)	Top	SURFACE	Bottom	3892	Called Out	Date	Time	Time Zone
						On Location	24 - Jan - 2013	20:00	MST
Form Type			BHST			Job Started	25 - Jan - 2013	01:00	MST
Job depth MD	3892. ft		Job Depth TVD	3892. ft		Job Completed	25 - Jan - 2013	00:00	MST
Water Depth			Wk Ht Above Floor	3. ft		Departed Loc	25 - Jan - 2013	00:00	MST
Perforation Depth (MD)	From		To						

Well Data

Description	New / Used	Max pressure psig	Size in	ID in	Weight lbm/ft	Thread	Grade	Top MD ft	Bottom MD ft	Top TVD ft	Bottom TVD ft

Tools and Accessories

Type	Size	Qty	Make	Depth	Type	Size	Qty	Make	Depth	Type	Size	Qty	Make
Guide Shoe					Packer					Top Plug	9.625	1	WTF
Float Shoe	9.625	1	WTF	3891.25	Bridge Plug					Bottom Plug			
Float Collar	9.625	1	WTF	3863.5	Retainer					SSR plug set			
Insert Float										Plug Container	9.625	1	HES
Stage Tool	9.625	1	WTF	1758.53						Centralizers	9.625	10	WTF

Miscellaneous Materials

Gelling Agt	Conc	Surfactant	Conc	Acid Type	Qty	Conc	%
Treatment Fld	Conc	Inhibitor	Conc	Sand Type	Size	Qty	

Fluid Data

Stage/Plug #: 1

Fluid #	Stage Type	Fluid Name	Qty	Qty uom	Mixing Density lbm/gal	Yield ft ³ /sk	Mix Fluid Gal/sk	Rate bbl/min	Total Mix Fluid Gal/sk

Stage/Plug #: 1

Stage/Plug #: 1									
Fluid #	Stage Type	Fluid Name	Qty	Qty uom	Mixing Density lbm/gal	Yield ft3/sk	Mix Fluid Gal/sk	Rate bbl/min	Total Mix Fluid Gal/sk
1	Fresh Water Spacer		40.00	bbl	8.33	.0	.0	4	
2	1st Stage Lead Cement	VERSACEM (TM) SYSTEM (452010)	585.0	sacks	12.8	1.77	9.34	7.5	9.34
	0.25 lbm	POLY-E-FLAKE (101216940)							
	0.25 %	HR-5, 50 LB SK (100005050)							
	0.125 lbm	TUF FIBER 594, 15 LB BOX (101350514)							
	9.34 Gal	FRESH WATER							
3	1st Stage Tail Cement	VERSACEM (TM) SYSTEM (452010)	175.0	sacks	12.8	1.96	10.95	8	10.95
	10.95 Gal	FRESH WATER							
4	Displacement		299.00	bbl	8.33	.0	.0	10	
5	Fresh Water Spacer		20.00	bbl	8.33	.0	.0	4	
6	2nd Stage TAIL	VERSACEM (TM) SYSTEM (452010)	910.0	sacks	12.8	1.96	10.95	8	10.95
	10.95 Gal	FRESH WATER							
7	Displacement		136.00	bbl	8.33	.0	.0	10	
Calculated Values		Pressures		Volumes					
Displacement	299	Shut In: Instant		Lost Returns	NONE	Cement Slurry	563	Pad	
Top Of Cement	SURFACE	5 Min		Cement Returns	89	Actual Displacement	299	Treatment	
Frac Gradient		15 Min		Spacers	60	Load and Breakdown		Total Job	1058
Rates									
Circulating	RIG	Mixing	8	Displacement	10	Avg. Job	7.5		
Cement Left In Pipe	Amount	0 ft	Reason	Shoe Joint					
Frac Ring # 1 @	ID	Frac ring # 2 @	ID	Frac Ring # 3 @	ID	Frac Ring # 4 @	ID		
The Information Stated Herein Is Correct				Customer Representative Signature					

The Road to Excellence Starts with Safety

Sold To #: 300721	Ship To #: 2975104	Quote #:	Sales Order #: 900143484
Customer: WPX ENERGY ROCKY MOUNTAIN LLC-EBUS		Customer Rep: Brunk, Andrew	
Well Name: RGU	Well #: 331-24-198	API/UWI #: 05-103-11807	
Field: SULPHUR CREEK	City (SAP): MEEKER	County/Parish: Rio Blanco	State: Colorado
Legal Description:			
Lat: N 39.953 deg. OR N 39 deg. 57 min. 9.972 secs.		Long: W 108.34 deg. OR W -109 deg. 39 min. 37.058 secs.	
Contractor: CYCLONE 29		Rig/Platform Name/Num: CYCLONE 29	
Job Purpose: Cement Multiple Stages			Ticket Amount:
Well Type: Development Well		Job Type: Cement Multiple Stages	
Sales Person: MAYO, MARK		Srvc Supervisor: CASTILLO, FRANCISCO	MBU ID Emp #: 513620

Activity Description	Date/Time	Cht #	Rate bbl/min	Volume bbl		Pressure psig		Comments
				Stage	Total	Tubing	Casing	
Pre-Convoy Safety Meeting	01/24/2013 22:20							ALL HES PERSONEL
Crew Leave Yard	01/24/2013 22:30							
Arrive At Loc	01/25/2013 01:00							
Assessment Of Location Safety Meeting	01/25/2013 04:50							ALL HES PERSONEL
Rig-Up Equipment	01/25/2013 05:00							1-ELITE, 1-660 BULK TRUCK, 2-1700CUFT SILOS, PUMPING IRON, PLUG CONTAINER AND QUICK LATCH
Rig-Up Completed	01/25/2013 06:00							
Pre-Job Safety Meeting	01/25/2013 06:10							ALL HES PERSONEL AND RIG CREW/DRILLING RIG CIRCULATED WITH THEIR OWN SWAGE(NON-HALLIBURTON)
Start Job	01/25/2013 06:31							TD-3892', TP-3891.25', SJ-27.75', CSG-9.625", 36#, J-55, OH-14.75" TO 1700', 13.5" TO 3892', MUD-9.5 PPG, VISC-30
Other	01/25/2013 06:33		2	2			127.0	FILL LINES
Other	01/25/2013 06:35		0.2	0.2				STALL OUT/PRESSURE HELD AT 2525 PSI

Pressure Test	01/25/2013 06:37		0.2	0.2				ALL LINES HELD PRESSURE AT 3939 PSI
Pump Spacer 1	01/25/2013 06:41		4	40			264.0	FRESH WATER
Activity Description	Date/Time	Cht #	Rate bbl/ min	Volume bbl		Pressure psig		Comments
				Stage	Total	Tubing	Casing	
Pump Lead Cement	01/25/2013 06:52		7.5	185			554.0	585 SKS, 12.8 PPG, 1.77 FT3/SK, 9.34 GAL/SK SETUP TIME 06:20 HRS AT 70 BC/TUFF FIBER ADDED ON THE 1ST 100 BBLs
Pump Tail Cement	01/25/2013 07:20		8	61			484.0	175 SKS, 12.8 PPG, 1.96 FT3/SK, 10.95 GAL/SK SETUP TIME 03:43 HRS AT 70 BC
Shutdown	01/25/2013 07:27							
Drop Top Plug	01/25/2013 07:38							VERIFIED BY CUSTOMER
Pump Displacement	01/25/2013 07:39		10	289			1100. 0	FRESH WATER
Slow Rate	01/25/2013 08:11		4	10			1140. 0	
Bump Plug	01/25/2013 08:15			299				
Check Floats	01/25/2013 08:16							FLOATS HELD/DROP DV TOOL OPENING DEVICE/WAIT 12 MIN.
Open Multiple Stage Cementer	01/25/2013 08:36		0.8	3			650.0	OPEN DV TOOL/START STAGE 2
Pump Water	01/25/2013 08:38		4	20			200.0	FRESH WATER/CIRCULATED 20 BBLs/63 SKS OF CEMENT FROM THE 1ST STAGE.
Stage Cement	01/25/2013 08:43		5	318			163.0	STAGE 2 SLURRY/910 SKS, 1.96 FT3/SK, 10.95 GAL/SK SETUP TIME 03:43 HRS AT 70 BC/ADDED TUFF FIBER TO THE LAST 100 BBLs OF CEMENT SLURRY.
Shutdown	01/25/2013 09:42							
Drop Plug	01/25/2013 09:43							CLOSING PLUG DROP VERIFIED BY CUSTOMER

HALLIBURTON

Cementing Job Log

Pump Displacement	01/25/2013 09:45		10	126			879.0	
Slow Rate	01/25/2013 10:00		4	10			475.0	
Activity Description	Date/Time	Cht #	Rate bbl/ min	Volume bbl		Pressure psig		Comments
				Stage	Total	Tubing	Casing	
Bump Plug	01/25/2013 10:02			136			1600. 0	CLOSE DV TOOL
Check Floats	01/25/2013 10:05							DV TOOL DID CLOSE
End Job	01/25/2013 10:06							CIRCULATED 89 BBLs/255 SKS OF CEMENT TO SURFACE
Safety Meeting - Pre Rig- Down	01/25/2013 10:10							ALL HES EMPLOYEES
Depart from Service Center or Other Site	01/25/2013 11:30							
Other	01/25/2013 11:31							THANK YOU FOR YOUR BUSINESS FROM JAVIER CASTILLO AND CREW

Sold To #: 300721

Ship To #: 2975104

Quote #:

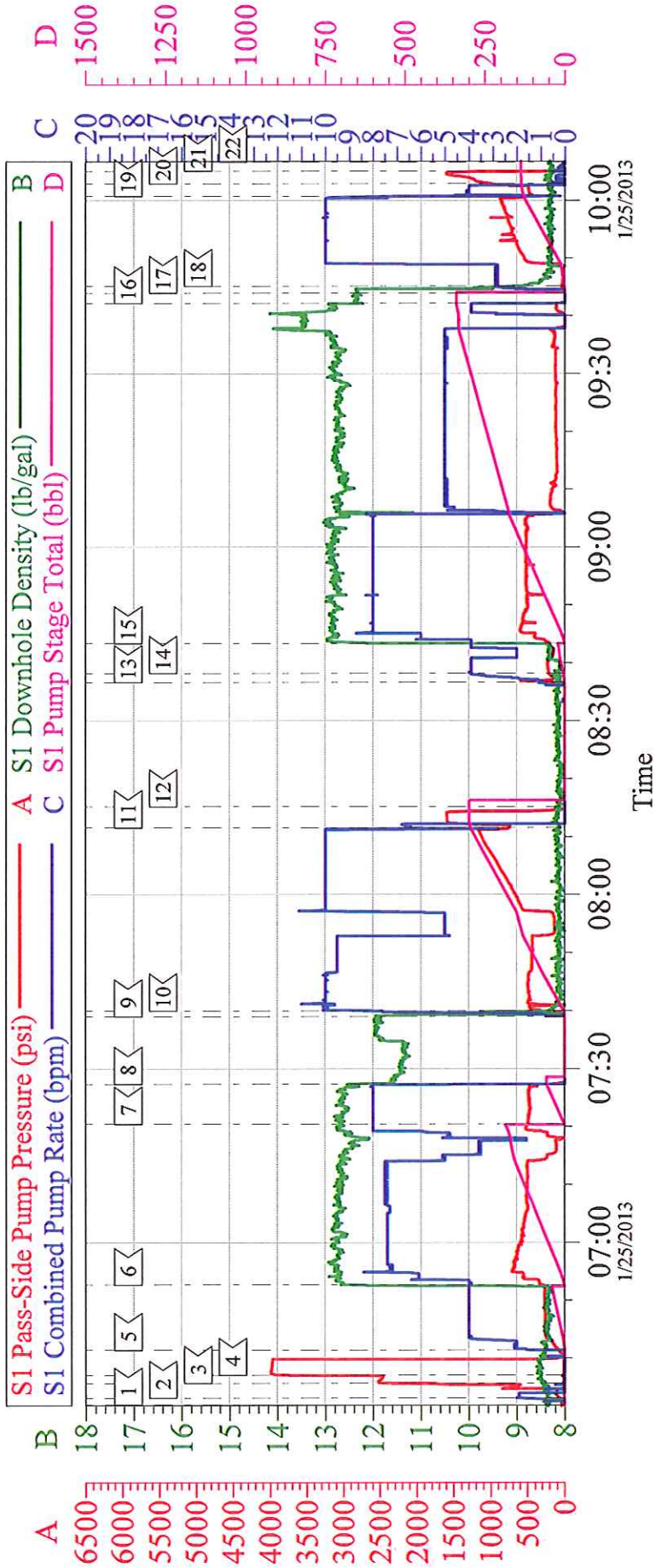
Sales Order #: 900143484

SUMMIT Version: 7.3.0073

Saturday, February 02, 2013 03:07:00

WPX RGU 331-24-198

2 STG 9 5/8 SURFACE



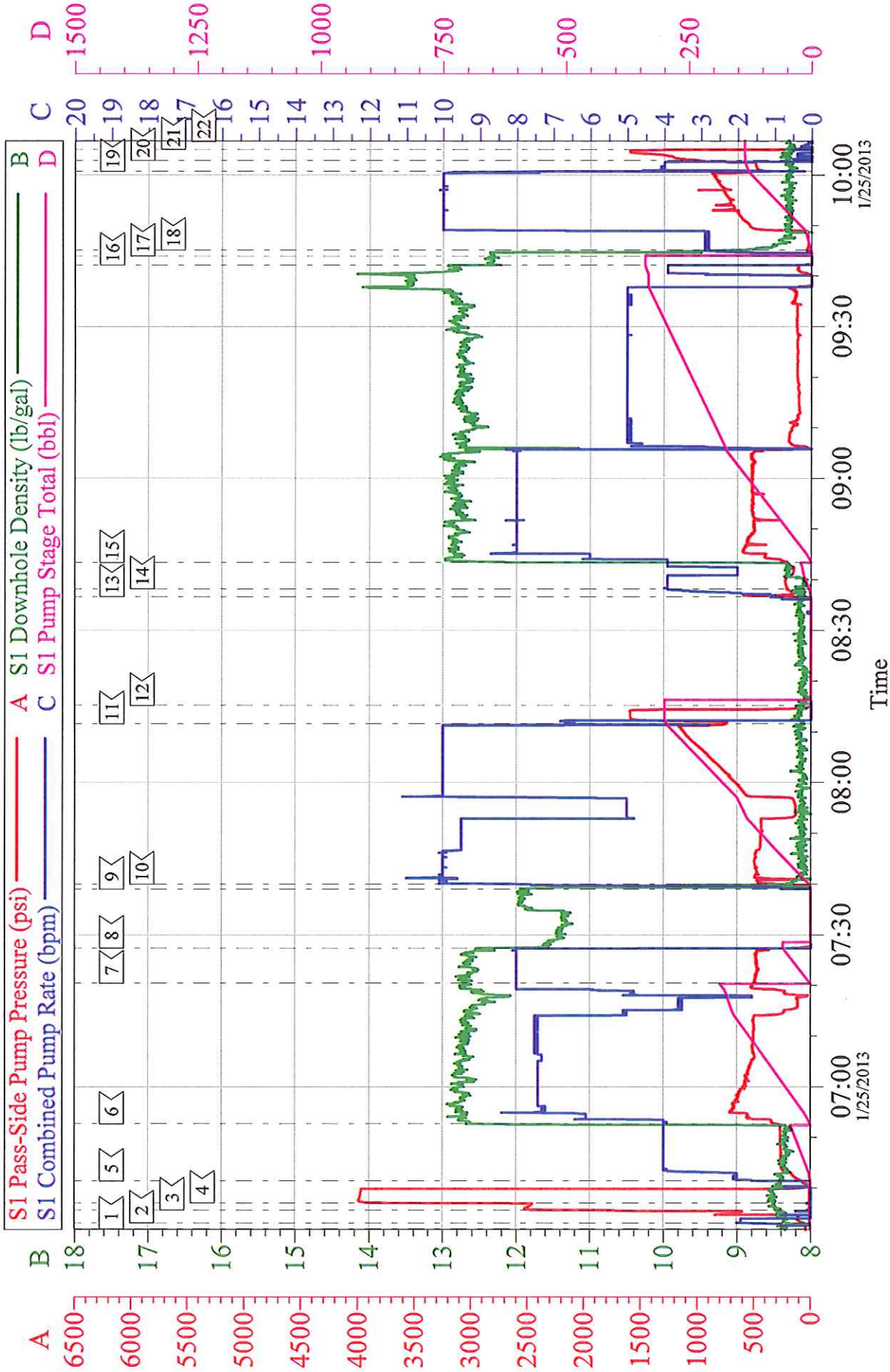
Local Event Log

1	START JOB	06:31:52	2	FILL LINES	06:33:03	3	STALL OUT	06:35:36
4	TEST LINES	06:37:00	5	SPACER	06:41:20	6	LEAD SLURRY	06:52:36
7	TAIL SLURRY	07:20:26	8	SHUTDOWN	07:27:20	9	DROP PLUG	07:38:59
10	DISPLACEMENT	07:39:58	11	SLOW	08:11:34	12	BUMP PLUG	08:15:10
13	OPEN DV TOOL	08:36:37	14	STG 2 SPACER	08:38:12	15	STG 2 CEMENT SLURRY	08:43:20
16	SHUT DOWN	09:42:10	17	DROP PLUG	09:43:56	18	DISPLACEMENT	09:45:07
19	SLOW RATE	10:00:43	20	BUMP	10:02:54	21	CHECK DV TOOL	10:05:03
22	END JOB	10:06:38						

Customer: WPX ENERGY ROCKY MOUNTAIN LLC-EBUS Job Date: 25-Jan-2013 Sales Order #: 900143484
 Well Description: RGU 331-24-198 Job Type: 2STG SURFACE ADC Used: YES
 Company Rep: ANDREW BRUNK Cement Supervisor: JAVIER CASTILLO Lite #8: ANDREW BRENNENCKE

WPX RGU 331-24-198

2 STG 9 5/8 SURFACE



Customer:	WPX ENERGY ROCKY MOUNTAIN LLC-EBUS	Job Date:	25-Jan-2013	Sales Order #:	900143484
Well Description:	RGU 331-24-198	Job Type:	2STG SURFACE	ADC Used:	YES
Company Rep:	ANDREW BRUNK	Cement Supervisor:	JAVIER CASTILLO	lite #8:	ANDREW BRENNENCKE