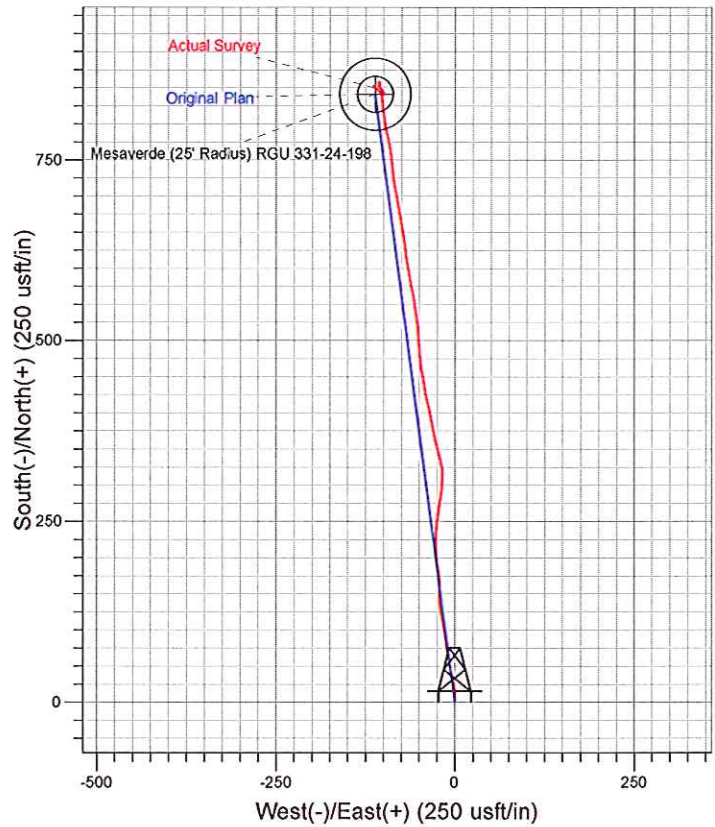
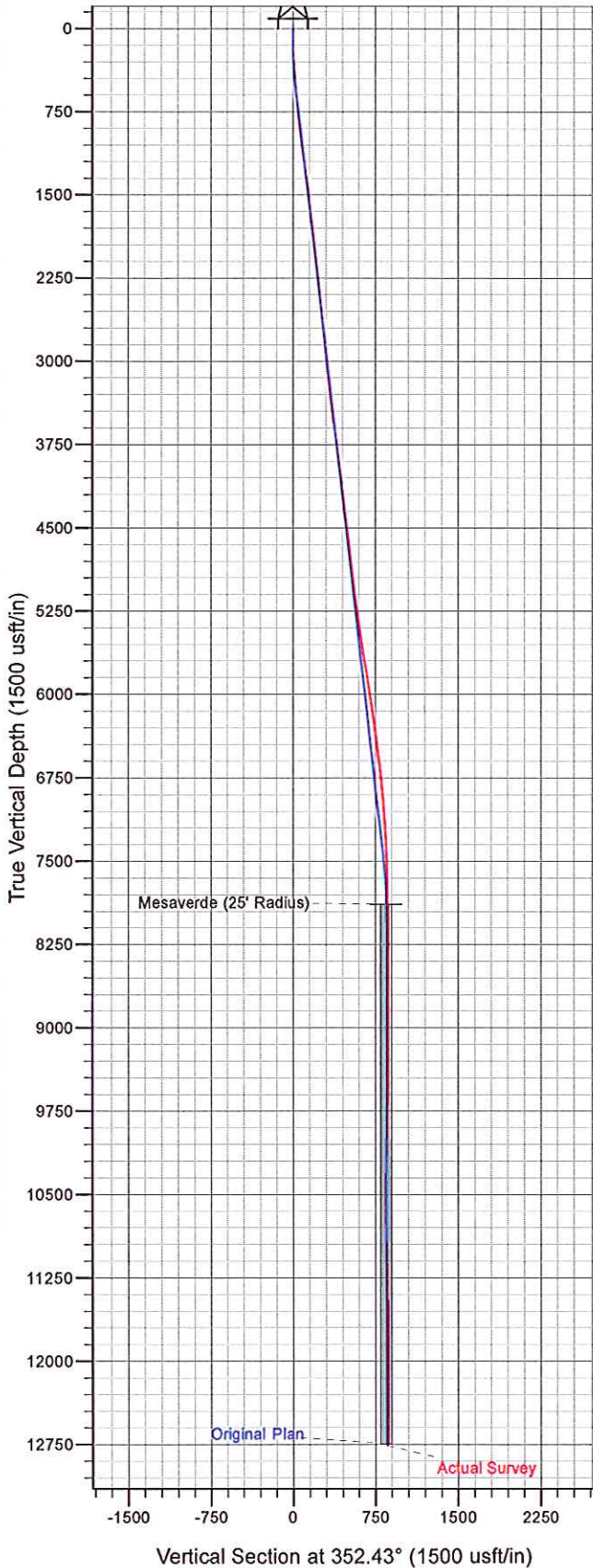




Well Name: RGU 331-24-198
 Surface Location: RGU 31-24-198 Pad
 North American Datum 1983 , US State Plane 1983. Colorado Central Zone
 Ground Elevation: 6546.00
 +N/-S +E/-W Northing Easting Latitude Longitude Slot
 0.00 0.00 1784376.10 2203964.20 39.95277 -108.33971 B4
 KELLY BUSHING @ 6567.00usft (Cyclone 29 (21' RKB))



Azimuths to True North
 Magnetic North: 10.36°

Magnetic Field
 Strength: 52285.2snT
 Dip Angle: 66.01°
 Date: 1/26/2013
 Model: IGRF2010