

FORM  
4  
Rev 12/05

State of Colorado  
Oil and Gas Conservation Commission

1120 Lincoln Street, Suite 801, Denver, Colorado 80203 Phone: (303)894-2100 Fax:(303)894-2109



DE	ET	OE	ES

SUNDRY NOTICE

Submit original plus one copy. This form is to be used for general, technical and environmental sundry Information. For proposed or completed operations, describe in full on Technical Information Page (Page 2 of this form.) Identify well or other facility by API Number or by OGCC Facility ID. Operator shall send an informational copy of all sundry notices for wells located in High Density Areas to the Local Government Designee (Rule 603b.)

1. OGCC Operator Number: 100185	4. Contact Name Charles Jensen	Complete the Attachment Checklist  OP OGCC
2. Name of Operator: Encana Oil and Gas (USA)	Phone: 970-285-2735	
3. Address: 143 Diamond Ave City: Parachute State: CO Zip:81635	Fax: 970-285-2705	
5. API Number 05- 103-08460	OGCC Facility ID Number 315413	Survey Plat
6. Well/Facility Name: Dragon Trail Unit - #1314	7. Well/Facility Number 1314	Directional Survey
8. Location (Qtr/Qtr, Sec, Twp, Rng, Meridian): SENE, Sec 19, 02S, 102W, 6th PM		Surface Eqpmt Diagram
9. County: Rio Blanco	10. Field Name: Dragon Trail Unit	Technical Info Page
11. Federal, Indian or State Lease Number: 44954		Other NOC

General Notice

☐ CHANGE OF LOCATION: Attach New Survey Plat (a change of surface qtr/qtr is substantive and requires a new permit)

	FNL/FSL		FEL/FWL
Change of Surface Footage from Exterior Section Lines:			
Change of Surface Footage to Exterior Section Lines:			
Change of Bottomhole Footage from Exterior Section Lines:			
Change of Bottomhole Footage to Exterior Section Lines:			

Bottomhole location Qtr/Qtr, Sec, Twp, Rng, Mer  
Latitude  
Longitude  
Ground Elevation

Distance to nearest property line  
Distance to nearest lease line  
Distance to nearest well same formation

Distance to nearest bldg, public rd, utility or RR  
Is location in a High Density Area (rule 603b)?  
Surface owner consultation date:

Yes/No

attach directional survey

GPS DATA:  
Date of Measurement  
PDOP Reading  
Instrument Operator's Name

☐ CHANGE SPACING UNIT  
Formation  
Formation Code  
Spacing order number  
Unit Acreage  
Unit configuration

☐ Remove from surface bond  
Signed surface use agreement attached

☐ CHANGE OF OPERATOR (prior to drilling):  
Effective Date:  
Plugging Bond: Blanket Individual

☐ CHANGE WELL NAME  
From:  
To:  
Effective Date:  
NUMBER

☐ ABANDONED LOCATION:  
Was location ever built?  
Is site ready for Inspection?  
Date Ready for Inspection:

☐ NOTICE OF CONTINUED SHUT IN STATUS  
Date well shut in or temporarily abandoned:  
Has Production Equipment been removed from site?  
MIT required if shut in longer than two years. Date of last MIT

☐ SPUD DATE:

☐ REQUEST FOR CONFIDENTIAL STATUS (6 mos from date casing set)

☐ SUBSEQUENT REPORT OF STAGE, SQUEEZE OR REMEDIAL CEMENT WORK  
Method used  
Cementing tool setting/perf depth  
Cement volume  
Cement top  
Cement bottom  
Date  
\*submit cbl and cement job summaries

☐ RECLAMATION: Attach technical page describing final reclamation procedures per Rule 1004.  
Final reclamation will commence on approximately  
Final reclamation is completed and site is ready for inspection.

Technical Engineering/Environmental Notice

☐ Notice of Intent  
Approximate Start Date:

☒ Report of Work Done  
Date Work Completed: 08/15/12

Details of work must be described in full on Technical Information Page (Page 2 must be submitted.)

☐ Intent to Recomplete (submit form 2)

☐ Request to Vent or Flare

☐ E&P Waste Disposal

☐ Change Drilling Plans

☐ Repair Well

☐ Beneficial Reuse of E&P Waste

☐ Gross Interval Changed?

☐ Rule 502 variance requested

☒ Status Update/Change of Remediation Plans

☐ Casing/Cementing Program Change

☐ Other:

for Spills and Releases

I hereby certify that the statements made in this form are, to the best of my knowledge, true, correct and complete.

Signed: Charles Jensen

Date: 6-24-13

Email: charles.jensen@Encana.com

Print Name: Charles Jensen

Title: Environmental Field Coordinator

COGCC Approved: Title: Date:

CONDITIONS OF APPROVAL, IF ANY:

**TECHNICAL INFORMATION PAGE**



FOR OGCC USE ONLY

- |  |                            |
|--|----------------------------|
| 1. OGCC Operator Number: 100185  | API Number: 05-103-008460  |
| 2. Name of Operator: Encana Oil and Gas (USA)                                  | OGCC Facility ID # 315413  |
| 3. Well/Facility Name: Dragon Trail #1314                                      | Well/Facility Number: 1314 |
| 4. Location (QtrQtr, Sec, Twp, Rng, Meridian): SENE, Sec 19, 02S, 102W, 6th PM |                            |

This form is to be completed whenever a Sundry Notice is submitted requiring detailed report of work to be performed or completed. This form shall be transmitted within 30 days of work completed as a "subsequent" report and must accompany Form 4, page 1.

5. **DESCRIBE PROPOSED OR COMPLETED OPERATIONS**

See Attached.

# NARRATIVE ATTACHMENT

## FORM 4 (SUNDRY NOTICE)

---

### Culvert Pit Closure (DTU 1314)

Document Date-6/24/2013

---

#### Introduction

Encana Oil & Gas (USA) Inc. (Encana) is submitting this Form 4 Sundry Notice to request final closure status for the culvert pit associated with the Dragon Trail Unit #1314 (COGCC facility #315413, COGCC remediation #7189). The site investigation was conducted by a third party contractor as authorized by Encana personnel and in accordance with the approved Form 27 previously submitted for this location. All samples were collected in accordance with Encana's Environmental Compliance Group's Sampling Procedures. The analytical results for the respective soil samples are provided in Table 1 and Attachment A of this submittal. The text below provides the details of the site investigation. For a visual description of the site please refer to Figures 1, 2, and 3 – Site Maps.

#### Assessment Activities

August 15, 2012 - The excavated soil surrounding the culvert pit was screened utilizing a photoionization detector (PID) prior to collecting soil samples for laboratory analysis. The culvert pit (steel ring, soil, cement bottom) was carefully removed using a trackhoe and placed onsite for later recycling or disposal. It should be noted that there was no liquid associated with the culvert pit during the time of removal. A grab sample was collected directly from the lowest point of the culvert pit after excavation. In addition, four (4) grab samples were collected, one from each excavated sidewall. Approximately 75 cubic yards of excavated material was removed from the pit and laid out in two separate lifts for evaluation of impacts. The first lift was one (1) foot tall (49' x 46') and the second lift was five (5) feet tall (28'x 24'). The excavated material was sampled by way of an eleven (11) point composite sample. Following analytical sample review, the excavated material was pushed back into the excavated area. Four (4) background samples were collected from approximately six (6) inches beneath the grounds surface for analysis with regards to arsenic.

#### Analytical Review

Sample results indicate that soil within the culvert pit footprint on Encana's Dragon Trail Unit #1314 well pad, had organic constituent concentrations of the excavated area and excavated material below or within COGCC Table 910-1. Analytical results indicated the excavated material exceeded COGCC Table 910-1 allowable concentrations for arsenic (2.6 ppm). Though the arsenic concentration in the soil is above the allowable concentration identified in Table 910-1, the concentration is below the range of arsenic background values (3.0 - 9.4 ppm) in this area. Based on these results and footnote 1 to COGCC Table 910-1, Encana requests that the COGCC consider the higher range of background arsenic value(s) as the allowable concentration for this constituent. Please see Table 1 and Attachment A for analytical results.

Though the elevated arsenic level of the returned spoil material within the excavated footprint area is above the allowable levels identified in Table 910-1; it will be buried greater than three feet bgs of existing pad footprint material to assure that material with elevated level of arsenic will have no adverse effect on



# NARRATIVE ATTACHMENT

## FORM 4 (SUNDRY NOTICE)

---

### Culvert Pit Closure (DTU 1314)

Document Date-6/24/2013

---

future re-vegetation efforts and receptors in the area. Please see Table 1 and Attachment A for analytical results.

#### **Conclusion**

Based on the site investigation and analytical results, the culvert pit associated with the Dragon Trail Unit #1314 is in compliance with the standards specified within COGCC Table 910-1. Encana respectfully requests that final closure be granted for the respective pit, COGCC remediation #7189.

#### **Notification of Completion**

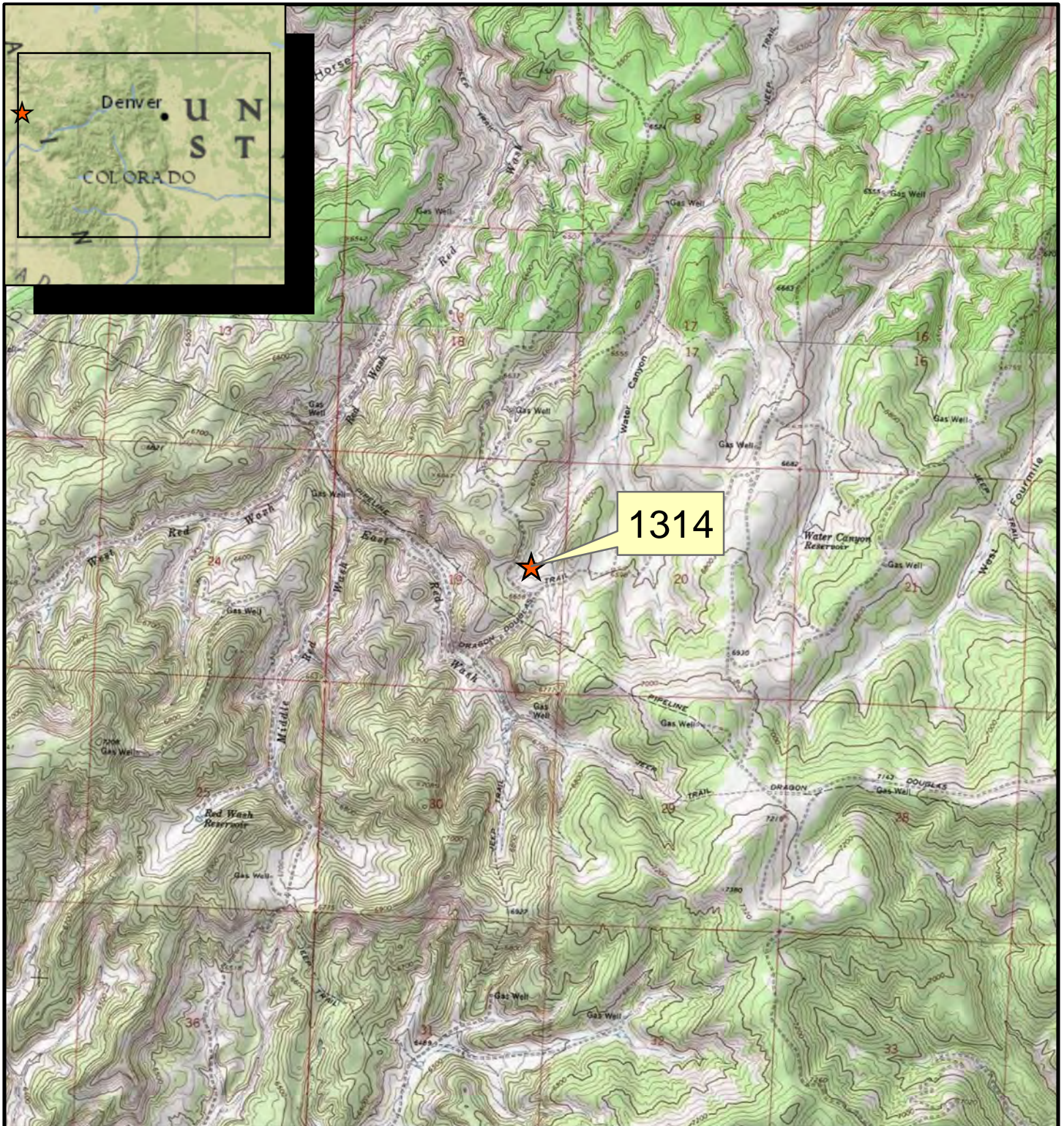
This Sundry Notice is also being submitted as the Notification of Completion for Remediation #7189. If the information provided here is satisfactory, please provide documentation of the closure of this remediation project.

#### **Attachments**

Topographic Location Map (Figure 1)  
1314 Aerial map with sample locations (Figure 2)  
1314 Site Diagram of Excavation and sample locations (Figure 3)  
Laboratory Results Summary Table 1 – 1314 Site Investigation (Table 1)  
Attachment A- Laboratory Reports







## Legend

★ 1314 Site Location



0 0.25 0.5 1 1.5 Miles

**Rule** Engineering, LLC  
Solutions to Regulations for Industry



**1314**  
**Site Location Map**

DATE: 9/06/2012 JG FILE: \\Encana\Figures\Rangely\1314\120906 Site Location Map.pdf

FIGURE: 1





## Legend

★ Soil Sample Location

0 50 100 200 300 Feet



**Rule** Engineering, LLC  
Solutions to Regulations for Industry



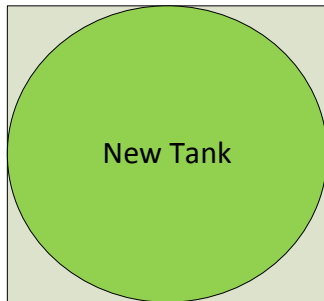
**1314**  
**Sample Location Map**

DATE: 9/06/2012 JG FILE: \\EnCana\Figures\Rangely\1314\120906 Sample Location Map.pdf FIGURE: 2

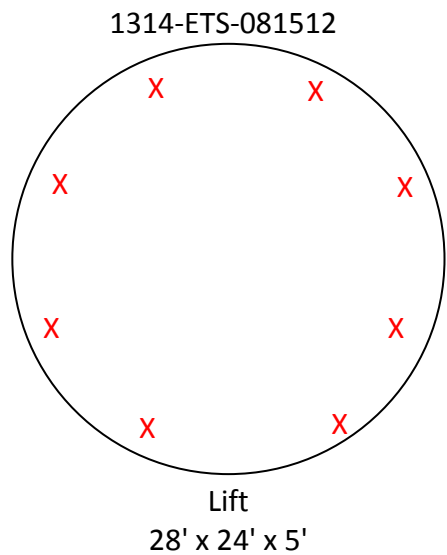
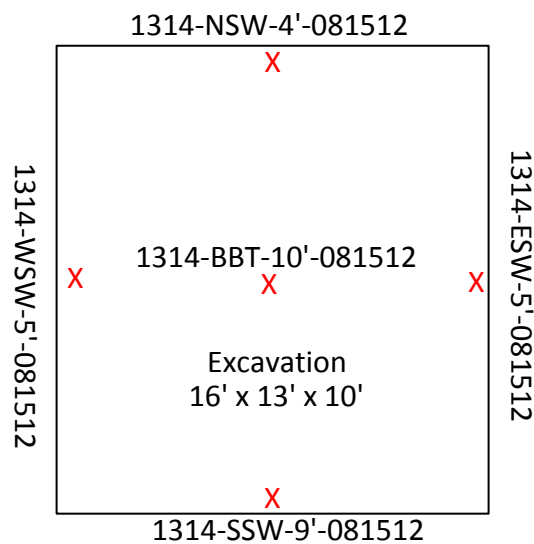
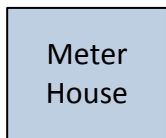
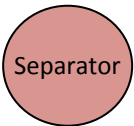
1314-ETS-081512



Lift  
50' x 10'



Direction of  
Flow



Legend  
X-Sample



Well: Figure 3. 1314 Site Diagram

Area: Dragon Trail Unit

Legal: SENE, Sec 19, 02S, 102W, 6<sup>th</sup> PM

Date: 09/27/12

Drawn By: Brad Ward

Revision Date:

Scale: None

Table 1. 1314 Site Clearance						Analytes (BDL = Below Detection Limit; NA = Not Applicable; ND =Non Detect; NS = Not Sampled)																																						
						Organics in Soil (mg/Kg)																		Metals in Soil (mg/kg [ppm])																				
						Allowable Concentration -->		500	NA	NA	0.17	85	100	175	1000	1000	0.22	0.22	2.2	0.022	22	0.022	1000	1000	0.22	23	1000	see below	<12	(6-9)	0.39	15000	70	120000	23	3100	400	23	1600	390	390	23000		
Sample ID	Location Number ID	COCID	Date:	Matrix Notes	Field Screen Reading (PID ppm)	TPH	TPH-GRO (G5-CL0) Low Fraction	TPH-DRO (CL10-C28) High Fraction	Benzene	Toluene	EthylBenzene	Xylenes - total	Acenaphthene	Anthracene	Benzo(A)anthracene	Benzo(B)fluoranthene	Benzo(K)fluoranthene	Benzo(A)pyrene	Chrysene	Dibenz(A,H)anthracene	Fluoranthene	Fluorene	Indeno(1,2,3-cd)pyrene	Naphthalene	Pyrene	EC (4 mmhos/cm or 2x background)	SAE (calculation)	pH	Arsenic	Barium- EPA Total Barium	Cadmium	Chromium (III)	Chromium (VI)	Copper	Lead	Mercury	Nickel	Selenium	Silver	Zinc				
1314-BG2E-6IN-081512	1314	L590755-02	8/15/2012	East Background			NS	NS	NS	NS	NS	NS	NS	NS	NS	NS	NS	NS	NS	NS	NS	NS	NS	NS	NS	NS	NS	NS	3.7	NS	NS	NS	NS	NS	NS	NS	NS	NS	NS	NS	NS	NS		
1314-BGIN-6IN-081512	1314	L590755-01	8/15/2012	North Background			NS	NS	NS	NS	NS	NS	NS	NS	NS	NS	NS	NS	NS	NS	NS	NS	NS	NS	NS	NS	NS	NS	3	NS	NS	NS	NS	NS	NS	NS	NS	NS	NS	NS	NS	NS	NS	
1314-BG3S-6IN-081512	1314	L590755-03	8/15/2012	South Background			NS	NS	NS	NS	NS	NS	NS	NS	NS	NS	NS	NS	NS	NS	NS	NS	NS	NS	NS	NS	NS	NS	5.9	NS	NS	NS	NS	NS	NS	NS	NS	NS	NS	NS	NS	NS	NS	
1314-BG4W-6IN-081512	1314	L590755-04	8/15/2012	West Background			NS	NS	NS	NS	NS	NS	NS	NS	NS	NS	NS	NS	NS	NS	NS	NS	NS	NS	NS	NS	NS	NS	9.4	NS	NS	NS	NS	NS	NS	NS	NS	NS	NS	NS	NS	NS	NS	
1314-BBT-10FT-081512	1314	L590755-09	8/15/2012	Base below culvert at 10 feet after excavation	42.4	22	<0.50	22	<0.0025	<0.025	<0.0025	<0.0075	NS	NS	NS	NS	NS	NS	NS	NS	NS	NS	NS	NS	NS	NS	NS	NS	NS	NS	NS	NS	NS	NS	NS	NS	NS	NS	NS	NS	NS	NS	NS	
1314-ETS-081512	1314	L590755-10	8/15/2012	Composite sample of spoil		24	<0.50	24	<0.0025	<0.025	<0.0025	<0.0075	<0.0060	<0.0060	<0.0060	<0.0060	<0.0060	<0.0060	<0.0060	<0.0060	<0.0060	<0.0060	<0.0060	<0.0060	<0.0060	0.009	9	8.7	2.6	170	<0.25	13	<2.0	15	10	<0.020	11	<1.0	<0.50	63				
1314-ESW-5FT-081512	1314	L590755-06	8/15/2012	East Side Wall sample at 5 feet after excavation	6	18	<0.50	18	<0.0025	<0.025	<0.0025	<0.0075	NS	NS	NS	NS	NS	NS	NS	NS	NS	NS	NS	NS	NS	NS	NS	NS	NS	NS	NS	NS	NS	NS	NS	NS	NS	NS	NS	NS	NS	NS	NS	NS
1314-NSW-4FT-081512	1314	L590755-05	8/15/2012	North Side Wall sample at 4 feet after excavation	5.6	<4.5	<0.50	<4.0	<0.0025	<0.025	<0.0025	<0.0075	NS	NS	NS	NS	NS	NS	NS	NS	NS	NS	NS	NS	NS	NS	NS	NS	NS	NS	NS	NS	NS	NS	NS	NS	NS	NS	NS	NS	NS	NS	NS	NS
1314-SSW-9FT-081512	1314	L590755-07	8/15/2012	South Side Wall sample at 9 feet after excavation	24	8.8	<0.50	8.8	<0.0025	<0.025	<0.0025	<0.0075	NS	NS	NS	NS	NS	NS	NS	NS	NS	NS	NS	NS	NS	NS	NS	NS	NS	NS	NS	NS	NS	NS	NS	NS	NS	NS	NS	NS	NS	NS	NS	NS
1314-W5W-5FT-081512	1314	L590755-08	8/15/2012	West Side Wall sample at 5 feet after excavation	11.2	4.9	<0.50	4.9	<0.0025	<0.025	<0.0025	<0.0075	NS	NS	NS	NS	NS	NS	NS	NS	NS	NS	NS	NS	NS	NS	NS	NS	NS	NS	NS	NS	NS	NS	NS	NS	NS	NS	NS	NS	NS	NS	NS	NS



# Attachment A



12065 Lebanon Rd.  
Mt. Juliet, TN 37122  
(615) 758-5858  
1-800-767-5859  
Fax (615) 758-5859

Tax I.D. 62-0814289

Est. 1970

Blake Ford  
EnCana Oil & Gas - Rangely, CO  
1125 Escalante Drive  
Rangely, CO 81648-3600

## Report Summary

Tuesday August 28, 2012

Report Number: L590755

Samples Received: 08/17/12

Client Project: 1314

Description: 1314 SITE CLEARANCE

The analytical results in this report are based upon information supplied by you, the client, and are for your exclusive use. If you have any questions regarding this data package, please do not hesitate to call.

Entire Report Reviewed By:

Jayred Willis , ESC Representative

### Laboratory Certification Numbers

A2LA - 1461-01, AIHA - 100789, AL - 40660, CA - 01157CA, CT - PH-0197,  
FL - E87487, GA - 923, IN - C-TN-01, KY - 90010, KYUST - 0016,  
NC - ENV375/DW21704/BIO041, ND - R-140, NJ - TN002, NJ NELAP - TN002,  
SC - 84004, TN - 2006, VA - 460132, WV - 233, AZ - 0612,  
MN - 047-999-395, NY - 11742, WI - 998093910, NV - TN000032011-1,  
TX - T104704245-11-3, OK - 9915, PA - 68-02979

Accreditation is only applicable to the test methods specified on each scope of accreditation held by ESC Lab Sciences.

Note: The use of the preparatory EPA Method 3511 is not approved or endorsed by the CA ELAP.

This report may not be reproduced, except in full, without written approval from ESC Lab Sciences. Where applicable, sampling conducted by ESC is performed per guidance provided in laboratory standard operating procedures: 060302, 060303, and 060304.



12065 Lebanon Rd.  
Mt. Juliet, TN 37122  
(615) 758-5858  
1-800-767-5859  
Fax (615) 758-5859

Tax I.D. 62-0814289

Est. 1970

REPORT OF ANALYSIS

Blake Ford  
EnCana Oil & Gas - Rangely, CO  
1125 Escalante Drive  
Rangely, CO 81648-3600

August 28, 2012

Date Received : August 17, 2012  
Description : 1314 SITE CLEARANCE  
Sample ID : 1314-BGIN-6IN-081512  
Collected By : Brad Ward  
Collection Date : 08/15/12 15:51

ESC Sample # : L590755-01

Site ID : 1314

Project # : 1314

Parameter	Result	Det. Limit	Units	Method	Date	Dil.
Arsenic	3.0	1.0	mg/kg	6010B	08/22/12	1

BDL - Below Detection Limit

Det. Limit - Practical Quantitation Limit(PQL)

Note:

The reported analytical results relate only to the sample submitted.

This report shall not be reproduced, except in full, without the written approval from ESC.

Reported: 08/28/12 16:13 Printed: 08/28/12 16:13



12065 Lebanon Rd.  
Mt. Juliet, TN 37122  
(615) 758-5858  
1-800-767-5859  
Fax (615) 758-5859

Tax I.D. 62-0814289

Est. 1970

REPORT OF ANALYSIS

Blake Ford  
EnCana Oil & Gas - Rangely, CO  
1125 Escalante Drive  
Rangely, CO 81648-3600

August 28, 2012

Date Received : August 17, 2012  
Description : 1314 SITE CLEARANCE  
Sample ID : 1314-BG2E-6IN-081512  
Collected By : Brad Ward  
Collection Date : 08/15/12 16:03

ESC Sample # : L590755-02

Site ID : 1314

Project # : 1314

Parameter	Result	Det. Limit	Units	Method	Date	Dil.
Arsenic	3.7	1.0	mg/kg	6010B	08/22/12	1

BDL - Below Detection Limit

Det. Limit - Practical Quantitation Limit(PQL)

Note:

The reported analytical results relate only to the sample submitted.

This report shall not be reproduced, except in full, without the written approval from ESC.

Reported: 08/28/12 16:13 Printed: 08/28/12 16:13





12065 Lebanon Rd.  
Mt. Juliet, TN 37122  
(615) 758-5858  
1-800-767-5859  
Fax (615) 758-5859

Tax I.D. 62-0814289

Est. 1970

# REPORT OF ANALYSIS

Blake Ford  
EnCana Oil & Gas - Rangely, CO  
1125 Escalante Drive  
Rangely, CO 81648-3600

August 28, 2012

Date Received : August 17, 2012  
Description : 1314 SITE CLEARANCE  
Sample ID : 1314-BG3S-6IN-081512  
Collected By : Brad Ward  
Collection Date : 08/15/12 16:14

ESC Sample # : L590755-03

Site ID : 1314

Project # : 1314

Parameter	Result	Det. Limit	Units	Method	Date	Dil.
Arsenic	5.9	1.0	mg/kg	6010B	08/22/12	1

BDL - Below Detection Limit

Det. Limit - Practical Quantitation Limit(PQL)

Note:

The reported analytical results relate only to the sample submitted.

This report shall not be reproduced, except in full, without the written approval from ESC.

.

Reported: 08/28/12 16:13 Printed: 08/28/12 16:13



12065 Lebanon Rd.  
Mt. Juliet, TN 37122  
(615) 758-5858  
1-800-767-5859  
Fax (615) 758-5859

Tax I.D. 62-0814289

Est. 1970

REPORT OF ANALYSIS

Blake Ford  
EnCana Oil & Gas - Rangely, CO  
1125 Escalante Drive  
Rangely, CO 81648-3600

August 28, 2012

Date Received : August 17, 2012  
Description : 1314 SITE CLEARANCE  
Sample ID : 1314-BG4W-6IN-081512  
Collected By : Brad Ward  
Collection Date : 08/15/12 16:28

ESC Sample # : L590755-04

Site ID : 1314

Project # : 1314

Parameter	Result	Det. Limit	Units	Method	Date	Dil.
Arsenic	9.4	1.0	mg/kg	6010B	08/22/12	1

BDL - Below Detection Limit

Det. Limit - Practical Quantitation Limit(PQL)

Note:

The reported analytical results relate only to the sample submitted.

This report shall not be reproduced, except in full, without the written approval from ESC.

Reported: 08/28/12 16:13 Printed: 08/28/12 16:13



12065 Lebanon Rd.  
Mt. Juliet, TN 37122  
(615) 758-5858  
1-800-767-5859  
Fax (615) 758-5859

Tax I.D. 62-0814289

Est. 1970

# REPORT OF ANALYSIS

Blake Ford  
EnCana Oil & Gas - Rangely, CO  
1125 Escalante Drive  
Rangely, CO 81648-3600

August 28, 2012

Date Received : August 17, 2012  
Description : 1314 SITE CLEARANCE

Sample ID : 1314-NSW-4FT-081512

Collected By : Brad Ward  
Collection Date : 08/15/12 13:56

ESC Sample # : L590755-05

Site ID : 1314

Project # : 1314

Parameter	Result	Det. Limit	Units	Method	Date	Dil.
Benzene	BDL	0.0025	mg/kg	8021/8015	08/19/12	5
Toluene	BDL	0.025	mg/kg	8021/8015	08/19/12	5
Ethylbenzene	BDL	0.0025	mg/kg	8021/8015	08/19/12	5
Total Xylene	BDL	0.0075	mg/kg	8021/8015	08/19/12	5
TPH (GC/FID) Low Fraction	BDL	0.50	mg/kg	GRO	08/19/12	5
Surrogate Recovery-%						
a,a,a-Trifluorotoluene(FID)	100.		% Rec.	8021/8015	08/19/12	5
a,a,a-Trifluorotoluene(PID)	104.		% Rec.	8021/8015	08/19/12	5
TPH (GC/FID) High Fraction	BDL	4.0	mg/kg	3546/DRO	08/23/12	1
Surrogate recovery(%)						
o-Terphenyl	98.1		% Rec.	3546/DRO	08/23/12	1

BDL - Below Detection Limit

Det. Limit - Practical Quantitation Limit(PQL)

Note:

The reported analytical results relate only to the sample submitted.

This report shall not be reproduced, except in full, without the written approval from ESC.

.

Reported: 08/28/12 16:13 Printed: 08/28/12 16:13



12065 Lebanon Rd.  
Mt. Juliet, TN 37122  
(615) 758-5858  
1-800-767-5859  
Fax (615) 758-5859

Tax I.D. 62-0814289

Est. 1970

# REPORT OF ANALYSIS

Blake Ford  
EnCana Oil & Gas - Rangely, CO  
1125 Escalante Drive  
Rangely, CO 81648-3600

August 28, 2012

Date Received : August 17, 2012  
Description : 1314 SITE CLEARANCE

Sample ID : 1314-ESW-5FT-081512

Collected By : Brad Ward  
Collection Date : 08/15/12 14:07

ESC Sample # : L590755-06

Site ID : 1314

Project # : 1314

Parameter	Result	Det. Limit	Units	Method	Date	Dil.
Benzene	BDL	0.0025	mg/kg	8021/8015	08/19/12	5
Toluene	BDL	0.025	mg/kg	8021/8015	08/19/12	5
Ethylbenzene	BDL	0.0025	mg/kg	8021/8015	08/19/12	5
Total Xylene	BDL	0.0075	mg/kg	8021/8015	08/19/12	5
TPH (GC/FID) Low Fraction	BDL	0.50	mg/kg	GRO	08/19/12	5
Surrogate Recovery-%						
a,a,a-Trifluorotoluene(FID)	99.7		% Rec.	8021/8015	08/19/12	5
a,a,a-Trifluorotoluene(PID)	103.		% Rec.	8021/8015	08/19/12	5
TPH (GC/FID) High Fraction	18.	4.0	mg/kg	3546/DRO	08/27/12	1
Surrogate recovery(%)						
o-Terphenyl	44.5		% Rec.	3546/DRO	08/27/12	1

BDL - Below Detection Limit

Det. Limit - Practical Quantitation Limit(PQL)

Note:

The reported analytical results relate only to the sample submitted.

This report shall not be reproduced, except in full, without the written approval from ESC.

Reported: 08/28/12 16:13 Printed: 08/28/12 16:13

L590755-06 (DRO) - second extraction confirms low surrogate



REPORT OF ANALYSIS

Blake Ford  
EnCana Oil & Gas - Rangely, CO  
1125 Escalante Drive  
Rangely, CO 81648-3600

August 28, 2012

Date Received : August 17, 2012  
Description : 1314 SITE CLEARANCE

Sample ID : 1314-SSW-9FT-081512

Collected By : Brad Ward  
Collection Date : 08/15/12 14:18

ESC Sample # : L590755-07

Site ID : 1314

Project # : 1314

Parameter	Result	Det. Limit	Units	Method	Date	Dil.
Benzene	BDL	0.0025	mg/kg	8021/8015	08/19/12	5
Toluene	BDL	0.025	mg/kg	8021/8015	08/19/12	5
Ethylbenzene	BDL	0.0025	mg/kg	8021/8015	08/19/12	5
Total Xylene	BDL	0.0075	mg/kg	8021/8015	08/19/12	5
TPH (GC/FID) Low Fraction	BDL	0.50	mg/kg	GRO	08/19/12	5
Surrogate Recovery-%						
a,a,a-Trifluorotoluene(FID)	99.9		% Rec.	8021/8015	08/19/12	5
a,a,a-Trifluorotoluene(PID)	104.		% Rec.	8021/8015	08/19/12	5
TPH (GC/FID) High Fraction	8.8	4.0	mg/kg	3546/DRO	08/22/12	1
Surrogate recovery(%)						
o-Terphenyl	44.6		% Rec.	3546/DRO	08/22/12	1

BDL - Below Detection Limit

Det. Limit - Practical Quantitation Limit(PQL)

Note:

The reported analytical results relate only to the sample submitted.

This report shall not be reproduced, except in full, without the written approval from ESC.

Reported: 08/28/12 16:13 Printed: 08/28/12 16:14  
L590755-07 (DRO) - MS/D confirms low surrogate

REPORT OF ANALYSIS

Blake Ford  
EnCana Oil & Gas - Rangely, CO  
1125 Escalante Drive  
Rangely, CO 81648-3600

August 28, 2012

Date Received : August 17, 2012  
Description : 1314 SITE CLEARANCE

Sample ID : 1314-WSW-5FT-081512

Collected By : Brad Ward  
Collection Date : 08/15/12 14:29

ESC Sample # : L590755-08

Site ID : 1314

Project # : 1314

Parameter	Result	Det. Limit	Units	Method	Date	Dil.
Benzene	BDL	0.0025	mg/kg	8021/8015	08/19/12	5
Toluene	BDL	0.025	mg/kg	8021/8015	08/19/12	5
Ethylbenzene	BDL	0.0025	mg/kg	8021/8015	08/19/12	5
Total Xylene	BDL	0.0075	mg/kg	8021/8015	08/19/12	5
TPH (GC/FID) Low Fraction	BDL	0.50	mg/kg	GRO	08/19/12	5
Surrogate Recovery-%						
a,a,a-Trifluorotoluene(FID)	100.		% Rec.	8021/8015	08/19/12	5
a,a,a-Trifluorotoluene(PID)	104.		% Rec.	8021/8015	08/19/12	5
TPH (GC/FID) High Fraction	4.9	4.0	mg/kg	3546/DRO	08/23/12	1
Surrogate recovery(%)						
o-Terphenyl	55.1		% Rec.	3546/DRO	08/23/12	1

BDL - Below Detection Limit

Det. Limit - Practical Quantitation Limit(PQL)

Note:

The reported analytical results relate only to the sample submitted.

This report shall not be reproduced, except in full, without the written approval from ESC.

.

Reported: 08/28/12 16:13 Printed: 08/28/12 16:14



12065 Lebanon Rd.  
Mt. Juliet, TN 37122  
(615) 758-5858  
1-800-767-5859  
Fax (615) 758-5859

Tax I.D. 62-0814289

Est. 1970

REPORT OF ANALYSIS

Blake Ford  
EnCana Oil & Gas - Rangely, CO  
1125 Escalante Drive  
Rangely, CO 81648-3600

August 28, 2012

Date Received : August 17, 2012  
Description : 1314 SITE CLEARANCE  
Sample ID : 1314-BBT-10FT-081512  
Collected By : Brad Ward  
Collection Date : 08/15/12 14:37

ESC Sample # : L590755-09

Site ID : 1314

Project # : 1314

Parameter	Result	Det. Limit	Units	Method	Date	Dil.
Benzene	BDL	0.0025	mg/kg	8021/8015	08/19/12	5
Toluene	BDL	0.025	mg/kg	8021/8015	08/19/12	5
Ethylbenzene	BDL	0.0025	mg/kg	8021/8015	08/19/12	5
Total Xylene	BDL	0.0075	mg/kg	8021/8015	08/19/12	5
TPH (GC/FID) Low Fraction	BDL	0.50	mg/kg	GRO	08/19/12	5
Surrogate Recovery-%						
a,a,a-Trifluorotoluene(FID)	100.		% Rec.	8021/8015	08/19/12	5
a,a,a-Trifluorotoluene(PID)	105.		% Rec.	8021/8015	08/19/12	5
TPH (GC/FID) High Fraction	22.	4.0	mg/kg	3546/DRO	08/23/12	1
Surrogate recovery(%)						
o-Terphenyl	53.2		% Rec.	3546/DRO	08/23/12	1

BDL - Below Detection Limit

Det. Limit - Practical Quantitation Limit(PQL)

Note:

The reported analytical results relate only to the sample submitted.

This report shall not be reproduced, except in full, without the written approval from ESC.

Reported: 08/28/12 16:13 Printed: 08/28/12 16:14

REPORT OF ANALYSIS

Blake Ford  
EnCana Oil & Gas - Rangely, CO  
1125 Escalante Drive  
Rangely, CO 81648-3600

August 28, 2012

Date Received : August 17, 2012  
Description : 1314 SITE CLEARANCE

Sample ID : 1314-ETS-081512

Collected By : Brad Ward  
Collection Date : 08/15/12 15:02

ESC Sample # : L590755-10

Site ID : 1314

Project # : 1314

Parameter	Result	Det. Limit	Units	Method	Date	Dil.
Chromium, Hexavalent	BDL	2.0	mg/kg	3060A/7196A	08/24/12	1
Chromium, Trivalent	13.	0.50	mg/kg	Calc.	08/22/12	1
ORP	200		mV	2580	08/22/12	1
pH	8.7		su	9045D	08/21/12	1
Sodium Adsorption Ratio	9.0			Calc.	08/23/12	1
Specific Conductance	620		umhos/cm	9050AMod	08/23/12	1
Mercury	BDL	0.020	mg/kg	7471	08/21/12	1
Arsenic	2.6	1.0	mg/kg	6010B	08/22/12	1
Barium	170	0.25	mg/kg	6010B	08/22/12	1
Cadmium	BDL	0.25	mg/kg	6010B	08/22/12	1
Chromium	13.	0.50	mg/kg	6010B	08/22/12	1
Copper	15.	1.0	mg/kg	6010B	08/22/12	1
Lead	10.	0.25	mg/kg	6010B	08/22/12	1
Nickel	11.	1.0	mg/kg	6010B	08/22/12	1
Selenium	BDL	1.0	mg/kg	6010B	08/22/12	1
Silver	BDL	0.50	mg/kg	6010B	08/22/12	1
Zinc	63.	1.5	mg/kg	6010B	08/22/12	1
Benzene	BDL	0.0025	mg/kg	8021/8015	08/19/12	5
Toluene	BDL	0.025	mg/kg	8021/8015	08/19/12	5
Ethylbenzene	BDL	0.0025	mg/kg	8021/8015	08/19/12	5
Total Xylene	BDL	0.0075	mg/kg	8021/8015	08/19/12	5
TPH (GC/FID) Low Fraction	BDL	0.50	mg/kg	GRO	08/19/12	5
Surrogate Recovery-%						
a,a,a-Trifluorotoluene(FID)	100.		% Rec.	8021/8015	08/19/12	5
a,a,a-Trifluorotoluene(PID)	104.		% Rec.	8021/8015	08/19/12	5
TPH (GC/FID) High Fraction	24.	4.0	mg/kg	3546/DRO	08/23/12	1
Surrogate recovery(%)						
o-Terphenyl	53.0		% Rec.	3546/DRO	08/23/12	1
Polynuclear Aromatic Hydrocarbons						
Anthracene	BDL	0.0060	mg/kg	8270C-SIM	08/26/12	1
Acenaphthene	BDL	0.0060	mg/kg	8270C-SIM	08/26/12	1
Acenaphthylene	BDL	0.0060	mg/kg	8270C-SIM	08/26/12	1
Benzo(a)anthracene	BDL	0.0060	mg/kg	8270C-SIM	08/26/12	1
Benzo(a)pyrene	BDL	0.0060	mg/kg	8270C-SIM	08/26/12	1

BDL - Below Detection Limit  
Det. Limit - Practical Quantitation Limit(PQL)  
L590755-10 (ORP) - 200 @ 17.9c  
L590755-10 (PH) - 8.7@21.8c





12065 Lebanon Rd.  
Mt. Juliet, TN 37122  
(615) 758-5858  
1-800-767-5859  
Fax (615) 758-5859

Tax I.D. 62-0814289

Est. 1970

# REPORT OF ANALYSIS

Blake Ford  
EnCana Oil & Gas - Rangely, CO  
1125 Escalante Drive  
Rangely, CO 81648-3600

August 28, 2012

Date Received : August 17, 2012  
Description : 1314 SITE CLEARANCE

Sample ID : 1314-ETS-081512

Collected By : Brad Ward  
Collection Date : 08/15/12 15:02

ESC Sample # : L590755-10

Site ID : 1314

Project # : 1314

Parameter	Result	Det. Limit	Units	Method	Date	Dil.
Benzo(b)fluoranthene	BDL	0.0060	mg/kg	8270C-SIM	08/26/12	1
Benzo(g,h,i)perylene	BDL	0.0060	mg/kg	8270C-SIM	08/26/12	1
Benzo(k)fluoranthene	BDL	0.0060	mg/kg	8270C-SIM	08/26/12	1
Chrysene	BDL	0.0060	mg/kg	8270C-SIM	08/26/12	1
Dibenz(a,h)anthracene	BDL	0.0060	mg/kg	8270C-SIM	08/26/12	1
Fluoranthene	BDL	0.0060	mg/kg	8270C-SIM	08/26/12	1
Fluorene	BDL	0.0060	mg/kg	8270C-SIM	08/26/12	1
Indeno(1,2,3-cd)pyrene	BDL	0.0060	mg/kg	8270C-SIM	08/26/12	1
Naphthalene	BDL	0.0060	mg/kg	8270C-SIM	08/26/12	1
Phenanthrene	BDL	0.0060	mg/kg	8270C-SIM	08/26/12	1
Pyrene	BDL	0.0060	mg/kg	8270C-SIM	08/26/12	1
1-Methylnaphthalene	BDL	0.0060	mg/kg	8270C-SIM	08/26/12	1
2-Methylnaphthalene	BDL	0.0060	mg/kg	8270C-SIM	08/26/12	1
2-Chloronaphthalene	BDL	0.0060	mg/kg	8270C-SIM	08/26/12	1
Surrogate Recovery						
Nitrobenzene-d5	71.6		% Rec.	8270C-SIM	08/26/12	1
2-Fluorobiphenyl	82.1		% Rec.	8270C-SIM	08/26/12	1
p-Terphenyl-d14	104.		% Rec.	8270C-SIM	08/26/12	1

BDL - Below Detection Limit

Det. Limit - Practical Quantitation Limit(PQL)

Note:

The reported analytical results relate only to the sample submitted.

This report shall not be reproduced, except in full, without the written approval from ESC.

Reported: 08/28/12 16:13 Printed: 08/28/12 16:14

L590755-10 (ORP) - 200 @ 17.9c

L590755-10 (PH) - 8.7@21.8c

Attachment A  
List of Analytes with QC Qualifiers

Sample Number	Work Group	Sample Type	Analyte	Run ID	Qualifier
L590755-06	WG609282	SAMP	o-Terphenyl	R2317873	J2
L590755-07	WG608521	SAMP	o-Terphenyl	R2312575	J2
L590755-10	WG608464	SAMP	pH	R2310633	T8

Attachment B  
Explanation of QC Qualifier Codes

Qualifier	Meaning
J2	Surrogate recovery limits have been exceeded; values are outside lower control limits
T8	(ESC) - Additional method/sample information: Sample(s) received past/too close to holding time expiration.

Qualifier Report Information

ESC utilizes sample and result qualifiers as set forth by the EPA Contract Laboratory Program and as required by most certifying bodies including NELAC. In addition to the EPA qualifiers adopted by ESC, we have implemented ESC qualifiers to provide more information pertaining to our analytical results. Each qualifier is designated in the qualifier explanation as either EPA or ESC. Data qualifiers are intended to provide the ESC client with more detailed information concerning the potential bias of reported data. Because of the wide range of constituents and variety of matrices incorporated by most EPA methods, it is common for some compounds to fall outside of established ranges. These exceptions are evaluated and all reported data is valid and useable "unless qualified as 'R' (Rejected)."

Definitions

- Accuracy - The relationship of the observed value of a known sample to the true value of a known sample. Represented by percent recovery and relevant to samples such as: control samples, matrix spike recoveries, surrogate recoveries, etc.
- Precision - The agreement between a set of samples or between duplicate samples. Relates to how close together the results are and is represented by Relative Percent Difference.
- Surrogate - Organic compounds that are similar in chemical composition, extraction, and chromatography to analytes of interest. The surrogates are used to determine the probable response of the group of analytes that are chemically related to the surrogate compound. Surrogates are added to the sample and carried through all stages of preparation and analyses.
- TIC - Tentatively Identified Compound: Compounds detected in samples that are not target compounds, internal standards, system monitoring compounds, or surrogates.

Summary of Remarks For Samples Printed  
08/28/12 at 16:14:02

TSR Signing Reports: 358  
R5 - Desired TAT

Sample: L590755-01 Account: ENCANRCO Received: 08/17/12 09:00 Due Date: 08/27/12 00:00 RPT Date: 08/28/12 16:13  
Sample: L590755-02 Account: ENCANRCO Received: 08/17/12 09:00 Due Date: 08/27/12 00:00 RPT Date: 08/28/12 16:13  
Sample: L590755-03 Account: ENCANRCO Received: 08/17/12 09:00 Due Date: 08/27/12 00:00 RPT Date: 08/28/12 16:13  
Sample: L590755-04 Account: ENCANRCO Received: 08/17/12 09:00 Due Date: 08/27/12 00:00 RPT Date: 08/28/12 16:13  
Sample: L590755-05 Account: ENCANRCO Received: 08/17/12 09:00 Due Date: 08/27/12 00:00 RPT Date: 08/28/12 16:13  
Sample: L590755-06 Account: ENCANRCO Received: 08/17/12 09:00 Due Date: 08/27/12 00:00 RPT Date: 08/28/12 16:13  
Sample: L590755-07 Account: ENCANRCO Received: 08/17/12 09:00 Due Date: 08/27/12 00:00 RPT Date: 08/28/12 16:13  
Sample: L590755-08 Account: ENCANRCO Received: 08/17/12 09:00 Due Date: 08/27/12 00:00 RPT Date: 08/28/12 16:13  
Sample: L590755-09 Account: ENCANRCO Received: 08/17/12 09:00 Due Date: 08/27/12 00:00 RPT Date: 08/28/12 16:13  
Sample: L590755-10 Account: ENCANRCO Received: 08/17/12 09:00 Due Date: 08/27/12 00:00 RPT Date: 08/28/12 16:13



YOUR LAB OF CHOICE

EnCana Oil & Gas - Rangely, CO  
Blake Ford  
1125 Escalante Drive  
Rangely, CO 81648-3600

Quality Assurance Report  
Level II

L590755

12065 Lebanon Rd.  
Mt. Juliet, TN 37122  
(615) 758-5858  
1-800-767-5859  
Fax (615) 758-5859

Tax I.D. 62-0814289

Est. 1970

August 28, 2012

Analyte	Result	Laboratory Blank		Limit	Batch	Date Analyzed
		Units	% Rec			
Benzene	< .0005	mg/kg			WG608381	08/19/12 01:37
Ethylbenzene	< .0005	mg/kg			WG608381	08/19/12 01:37
Toluene	< .005	mg/kg			WG608381	08/19/12 01:37
TPH (GC/FID) Low Fraction	< .1	mg/kg			WG608381	08/19/12 01:37
Total Xylene	< .0015	mg/kg			WG608381	08/19/12 01:37
a,a,a-Trifluorotoluene(FID)		% Rec.	101.0	59-128	WG608381	08/19/12 01:37
a,a,a-Trifluorotoluene(PID)		% Rec.	105.4	54-144	WG608381	08/19/12 01:37
Mercury	< .02	mg/kg			WG608380	08/21/12 13:32
Arsenic	< 1	mg/kg			WG608588	08/22/12 00:57
Arsenic	< 1	mg/kg			WG608699	08/22/12 14:44
Barium	< .25	mg/kg			WG608699	08/22/12 14:44
Cadmium	< .25	mg/kg			WG608699	08/22/12 14:44
Chromium	< .5	mg/kg			WG608699	08/22/12 14:44
Copper	< 1	mg/kg			WG608699	08/22/12 14:44
Lead	< .25	mg/kg			WG608699	08/22/12 14:44
Nickel	< 1	mg/kg			WG608699	08/22/12 14:44
Selenium	< 1	mg/kg			WG608699	08/22/12 14:44
Silver	< .5	mg/kg			WG608699	08/22/12 14:44
Zinc	< 1.5	mg/kg			WG608699	08/22/12 14:44
TPH (GC/FID) High Fraction	< 4	ppm			WG608521	08/22/12 00:15
o-Terphenyl		% Rec.	51.35	50-150	WG608521	08/22/12 00:15
TPH (GC/FID) High Fraction	< 4	ppm			WG608793	08/23/12 02:58
o-Terphenyl		% Rec.	74.40	50-150	WG608793	08/23/12 02:58
Chromium,Hexavalent	< 2	mg/kg			WG608845	08/24/12 08:34
Specific Conductance	3.50	umhos/cm			WG609013	08/23/12 14:18
1-Methylnaphthalene	< .006	mg/kg			WG609184	08/24/12 11:56
2-Chloronaphthalene	< .006	mg/kg			WG609184	08/24/12 11:56
2-Methylnaphthalene	< .006	mg/kg			WG609184	08/24/12 11:56
Acenaphthene	< .006	mg/kg			WG609184	08/24/12 11:56
Acenaphthylene	< .006	mg/kg			WG609184	08/24/12 11:56
Anthracene	< .006	mg/kg			WG609184	08/24/12 11:56
Benzo(a)anthracene	< .006	mg/kg			WG609184	08/24/12 11:56
Benzo(a)pyrene	< .006	mg/kg			WG609184	08/24/12 11:56
Benzo(b)fluoranthene	< .006	mg/kg			WG609184	08/24/12 11:56
Benzo(g,h,i)perylene	< .006	mg/kg			WG609184	08/24/12 11:56
Benzo(k)fluoranthene	< .006	mg/kg			WG609184	08/24/12 11:56
Chrysene	< .006	mg/kg			WG609184	08/24/12 11:56
Dibenz(a,h)anthracene	< .006	mg/kg			WG609184	08/24/12 11:56
Fluoranthene	< .006	mg/kg			WG609184	08/24/12 11:56
Fluorene	< .006	mg/kg			WG609184	08/24/12 11:56
Indeno(1,2,3-cd)pyrene	< .006	mg/kg			WG609184	08/24/12 11:56
Naphthalene	< .006	mg/kg			WG609184	08/24/12 11:56
Phenanthrene	< .006	mg/kg			WG609184	08/24/12 11:56

\* Performance of this Analyte is outside of established criteria.

For additional information, please see Attachment A 'List of Analytes with QC Qualifiers.'



**YOUR LAB OF CHOICE**

EnCana Oil & Gas - Rangely, CO  
Blake Ford  
1125 Escalante Drive  
Rangely, CO 81648-3600

Quality Assurance Report  
Level II

L590755

12065 Lebanon Rd.  
Mt. Juliet, TN 37122  
(615) 758-5858  
1-800-767-5859  
Fax (615) 758-5859

Tax I.D. 62-0814289

Est. 1970

August 28, 2012

Analyte	Result	Laboratory Blank		Limit	Batch	Date Analyzed
		Units	% Rec			
Pyrene	< .006	mg/kg			WG609184	08/24/12 11:56
2-Fluorobiphenyl		% Rec.	87.70	34-129	WG609184	08/24/12 11:56
Nitrobenzene-d5		% Rec.	84.78	14-141	WG609184	08/24/12 11:56
p-Terphenyl-d14		% Rec.	84.04	25-139	WG609184	08/24/12 11:56
TPH (GC/FID) High Fraction	< 4	ppm			WG609282	08/27/12 12:21
o-Terphenyl		% Rec.	65.93	50-150	WG609282	08/27/12 12:21

Analyte	Units	Duplicate		RPD	Limit	Ref Samp	Batch
		Result	Duplicate				
pH	su	8.40	8.30	0.840	1	L590670-10	WG608464
pH	su	7.60	7.60	0.528	1	L590837-05	WG608464
Mercury	mg/kg	0	0	0	20	L590755-10	WG608380
Arsenic	mg/kg	2.60	2.65	2.29	20	L590865-05	WG608588
ORP	mV	200.	200.	2.02	20	L590545-10	WG608838
ORP	mV	230.	230.	1.75	20	L591059-02	WG608838
Barium	mg/kg	150.	124.	16.3	20	L590724-03	WG608699
Cadmium	mg/kg	0	0	0	20	L590724-03	WG608699
Chromium	mg/kg	37.0	39.7	7.31	20	L590724-03	WG608699
Copper	mg/kg	9.40	9.86	4.25	20	L590724-03	WG608699
Lead	mg/kg	7.70	8.20	6.81	20	L590724-03	WG608699
Nickel	mg/kg	13.0	13.3	2.28	20	L590724-03	WG608699
Selenium	mg/kg	0	0	0	20	L590724-03	WG608699
Silver	mg/kg	0	0	0	20	L590724-03	WG608699
Zinc	mg/kg	43.0	44.2	2.29	20	L590724-03	WG608699
Arsenic	mg/kg	0	0	0	20	L590724-03	WG608699
Chromium,Hexavalent	mg/kg	0	0	0	20	L591082-10	WG608845
Chromium,Hexavalent	mg/kg	87.0	84.0	3.05	20	L587109-14	WG608845
Specific Conductance	umhos/cm	300.	230.	25.1*	20	L590837-01	WG609013
Specific Conductance	umhos/cm	14.0	13.0	10.9	20	L591296-02	WG609013

Analyte	Units	Laboratory Control Sample		% Rec	Limit	Batch
		Known Val	Result			
Benzene	mg/kg	.05	0.0447	89.5	76-113	WG608381
Ethylbenzene	mg/kg	.05	0.0530	106.	78-115	WG608381
Toluene	mg/kg	.05	0.0497	99.4	76-114	WG608381
Total Xylene	mg/kg	.15	0.161	107.	81-118	WG608381
a,a,a-Trifluorotoluene(PID)				104.7	54-144	WG608381
TPH (GC/FID) Low Fraction	mg/kg	5.5	5.63	102.	67-135	WG608381
a,a,a-Trifluorotoluene(FID)				105.4	59-128	WG608381
pH	su	6.03	6.00	99.5	98-101	WG608464

\* Performance of this Analyte is outside of established criteria.

For additional information, please see Attachment A 'List of Analytes with QC Qualifiers.'



**YOUR LAB OF CHOICE**

EnCana Oil & Gas - Rangely, CO  
Blake Ford  
1125 Escalante Drive

Rangely, CO 81648-3600

Quality Assurance Report  
Level II

L590755

12065 Lebanon Rd.  
Mt. Juliet, TN 37122  
(615) 758-5858  
1-800-767-5859  
Fax (615) 758-5859

Tax I.D. 62-0814289

Est. 1970

August 28, 2012

Analyte	Units	Laboratory Control Known Val	Sample Result	% Rec	Limit	Batch
Mercury	mg/kg	12.4	14.2	115.	71.6-128	WG608380
Arsenic	mg/kg	237	199.	84.0	83.1-117	WG608588
ORP	mV	228	226.	99.1	95.6-104.	WG608838
TPH (GC/FID) High Fraction o-Terphenyl	ppm	60	41.0	68.3 53.21	50-150 50-150	WG608521 WG608521
TPH (GC/FID) High Fraction o-Terphenyl	ppm	60	52.8	88.0 83.16	50-150 50-150	WG608793 WG608793
Chromium, Hexavalent	mg/kg	203	152.	74.9	50-150	WG608845
Specific Conductance	umhos/cm	1050	1000	95.2	85-115	WG609013
1-Methylnaphthalene	mg/kg	.033	0.0255	77.3	48-113	WG609184
2-Chloronaphthalene	mg/kg	.033	0.0258	78.3	51-114	WG609184
2-Methylnaphthalene	mg/kg	.033	0.0247	74.8	44-109	WG609184
Acenaphthene	mg/kg	.033	0.0256	77.5	52-108	WG609184
Acenaphthylene	mg/kg	.033	0.0264	79.9	51-110	WG609184
Anthracene	mg/kg	.033	0.0285	86.3	58-120	WG609184
Benzo(a)anthracene	mg/kg	.033	0.0274	83.1	54-110	WG609184
Benzo(a)pyrene	mg/kg	.033	0.0279	84.6	56-118	WG609184
Benzo(b)fluoranthene	mg/kg	.033	0.0279	84.7	55-114	WG609184
Benzo(g,h,i)perylene	mg/kg	.033	0.0299	90.7	48-130	WG609184
Benzo(k)fluoranthene	mg/kg	.033	0.0269	81.7	55-122	WG609184
Chrysene	mg/kg	.033	0.0262	79.5	57-118	WG609184
Dibenz(a,h)anthracene	mg/kg	.033	0.0302	91.4	53-122	WG609184
Fluoranthene	mg/kg	.033	0.0283	85.6	58-118	WG609184
Fluorene	mg/kg	.033	0.0258	78.2	54-109	WG609184
Indeno(1,2,3-cd)pyrene	mg/kg	.033	0.0299	90.6	51-125	WG609184
Naphthalene	mg/kg	.033	0.0238	72.1	45-105	WG609184
Phenanthrene	mg/kg	.033	0.0269	81.5	53-114	WG609184
Pyrene	mg/kg	.033	0.0262	79.4	53-121	WG609184
2-Fluorobiphenyl				82.97	34-129	WG609184
Nitrobenzene-d5				77.21	14-141	WG609184
p-Terphenyl-d14				77.34	25-139	WG609184
TPH (GC/FID) High Fraction o-Terphenyl	ppm	60	48.8	81.4 65.17	50-150 50-150	WG609282 WG609282

Analyte	Units	Laboratory Control Result	Sample Duplicate Ref	%Rec	Limit	RPD	Limit	Batch
Benzene	mg/kg	0.0440	0.0447	88.0	76-113	1.74	20	WG608381
Ethylbenzene	mg/kg	0.0522	0.0530	104.	78-115	1.48	20	WG608381
Toluene	mg/kg	0.0488	0.0497	98.0	76-114	1.77	20	WG608381
Total Xylene	mg/kg	0.158	0.161	105.	81-118	1.84	20	WG608381
a,a,a-Trifluorotoluene(PID)				105.2	54-144			WG608381

\* Performance of this Analyte is outside of established criteria.

For additional information, please see Attachment A 'List of Analytes with QC Qualifiers.'



**YOUR LAB OF CHOICE**

EnCana Oil & Gas - Rangely, CO  
Blake Ford  
1125 Escalante Drive

Rangely, CO 81648-3600

Quality Assurance Report  
Level II

L590755

12065 Lebanon Rd.  
Mt. Juliet, TN 37122  
(615) 758-5858  
1-800-767-5859  
Fax (615) 758-5859

Tax I.D. 62-0814289

Est. 1970

August 28, 2012

Analyte	Units	Laboratory Control		Sample Duplicate		Limit	RPD	Limit	Batch
		Result	Ref	%Rec					
TPH (GC/FID) Low Fraction	mg/kg	5.59	5.63	102.		67-135	0.670	20	WG608381
a,a,a-Trifluorotoluene(FID)				104.1		59-128			WG608381
pH	su	6.01	6.00	100.		98-101	0.167	20	WG608464
ORP	mV	225.	226.	99.0		95.6-104.	0.443	20	WG608838
TPH (GC/FID) High Fraction	ppm	38.1	41.0	64.0		50-150	7.24	25	WG608521
o-Terphenyl				49.94*		50-150			WG608521
TPH (GC/FID) High Fraction	ppm	46.4	52.8	77.0		50-150	12.8	23	WG608793
o-Terphenyl				74.38		50-150			WG608793
Chromium, Hexavalent	mg/kg	150.	152.	74.0		50-150	1.32	20	WG608845
Specific Conductance	umhos/	1100	1000	105.		85-115	9.52	20	WG609013
1-Methylnaphthalene	mg/kg	0.0258	0.0255	78.0		48-113	1.09	24	WG609184
2-Chloronaphthalene	mg/kg	0.0260	0.0258	79.0		51-114	0.460	24	WG609184
2-Methylnaphthalene	mg/kg	0.0243	0.0247	74.0		44-109	1.59	24	WG609184
Acenaphthene	mg/kg	0.0260	0.0256	79.0		52-108	1.73	22	WG609184
Acenaphthylene	mg/kg	0.0259	0.0264	78.0		51-110	1.79	21	WG609184
Anthracene	mg/kg	0.0266	0.0285	81.0		58-120	6.68	20	WG609184
Benzo(a)anthracene	mg/kg	0.0273	0.0274	83.0		54-110	0.445	22	WG609184
Benzo(a)pyrene	mg/kg	0.0277	0.0279	84.0		56-118	0.971	21	WG609184
Benzo(b)fluoranthene	mg/kg	0.0267	0.0279	81.0		55-114	4.49	20	WG609184
Benzo(g,h,i)perylene	mg/kg	0.0292	0.0299	88.0		48-130	2.56	20	WG609184
Benzo(k)fluoranthene	mg/kg	0.0272	0.0269	82.0		55-122	1.05	25	WG609184
Chrysene	mg/kg	0.0263	0.0262	80.0		57-118	0.316	20	WG609184
Dibenz(a,h)anthracene	mg/kg	0.0289	0.0302	88.0		53-122	4.24	20	WG609184
Fluoranthene	mg/kg	0.0269	0.0283	82.0		58-118	4.81	20	WG609184
Fluorene	mg/kg	0.0261	0.0258	79.0		54-109	1.15	20	WG609184
Indeno(1,2,3-cd)pyrene	mg/kg	0.0293	0.0299	89.0		51-125	2.13	21	WG609184
Naphthalene	mg/kg	0.0247	0.0238	75.0		45-105	3.60	24	WG609184
Phenanthrene	mg/kg	0.0252	0.0269	76.0		53-114	6.68	20	WG609184
Pyrene	mg/kg	0.0256	0.0262	77.0		53-121	2.49	20	WG609184
2-Fluorobiphenyl				81.87		34-129			WG609184
Nitrobenzene-d5				75.63		14-141			WG609184
p-Terphenyl-d14				78.40		25-139			WG609184
TPH (GC/FID) High Fraction	ppm	49.7	48.8	83.0		50-150	1.83	25	WG609282
o-Terphenyl				67.46		50-150			WG609282

Analyte	Units	Matrix Spike			% Rec	Limit	Ref Samp	Batch
		MS Res	Ref Res	TV				
Benzene	mg/kg	0.207	0	.05	82.9	32-137	L590755-05	WG608381
Ethylbenzene	mg/kg	0.245	0	.05	97.8	10-150	L590755-05	WG608381
Toluene	mg/kg	0.232	0	.05	93.0	20-142	L590755-05	WG608381
Total Xylene	mg/kg	0.741	0	.15	98.8	16-141	L590755-05	WG608381
a,a,a-Trifluorotoluene(FID)					100.2	59-128		WG608381

\* Performance of this Analyte is outside of established criteria.

For additional information, please see Attachment A 'List of Analytes with QC Qualifiers.'





**YOUR LAB OF CHOICE**

EnCana Oil & Gas - Rangely, CO  
Blake Ford  
1125 Escalante Drive

Rangely, CO 81648-3600

Quality Assurance Report  
Level II

L590755

12065 Lebanon Rd.  
Mt. Juliet, TN 37122  
(615) 758-5858  
1-800-767-5859  
Fax (615) 758-5859

Tax I.D. 62-0814289

Est. 1970

August 28, 2012

Analyte	Units	MS Res	Matrix Spike		% Rec	Limit	Ref Samp	Batch
			Ref Res	TV				
TPH (GC/FID) Low Fraction	mg/kg	21.5	0	5.5	78.2	55-109	L590755-05	WG608381
a,a,a-Trifluorotoluene(FID)					102.7	59-128		WG608381
a,a,a-Trifluorotoluene(PID)					107.6	54-144		WG608381
Mercury	mg/kg	0.248	0	.25	99.2	80-120	L590755-10	WG608380
Arsenic	mg/kg	46.4	2.65	50	87.5	75-125	L590865-05	WG608588
Barium	mg/kg	208.	124.	50	168.*	75-125	L590724-03	WG608699
Cadmium	mg/kg	46.9	0	50	93.8	75-125	L590724-03	WG608699
Chromium	mg/kg	87.3	39.7	50	95.2	75-125	L590724-03	WG608699
Copper	mg/kg	59.1	9.86	50	98.5	75-125	L590724-03	WG608699
Lead	mg/kg	54.1	8.20	50	91.8	75-125	L590724-03	WG608699
Nickel	mg/kg	58.2	13.3	50	89.8	75-125	L590724-03	WG608699
Selenium	mg/kg	43.6	0	50	87.2	75-125	L590724-03	WG608699
Silver	mg/kg	46.8	0	50	93.6	75-125	L590724-03	WG608699
Zinc	mg/kg	92.9	44.2	50	97.4	75-125	L590724-03	WG608699
Arsenic	mg/kg	39.0	0	50	78.0	75-125	L590724-03	WG608699
Arsenic	mg/kg	48.1	0	50	96.2	75-125	L590932-04	WG608699
Barium	mg/kg	74.6	22.0	50	105.	75-125	L590932-04	WG608699
Cadmium	mg/kg	51.8	0.0880	50	103.	75-125	L590932-04	WG608699
Chromium	mg/kg	67.6	12.0	50	111.	75-125	L590932-04	WG608699
Copper	mg/kg	54.3	1.94	50	105.	75-125	L590932-04	WG608699
Lead	mg/kg	58.7	8.40	50	101.	75-125	L590932-04	WG608699
Nickel	mg/kg	55.8	7.65	50	96.3	75-125	L590932-04	WG608699
Selenium	mg/kg	46.4	0	50	92.8	75-125	L590932-04	WG608699
Silver	mg/kg	48.9	0	50	97.8	75-125	L590932-04	WG608699
Zinc	mg/kg	63.2	7.94	50	110.	75-125	L590932-04	WG608699
TPH (GC/FID) High Fraction	ppm	64.4	8.80	60	92.6	50-150	L590755-07	WG608521
o-Terphenyl					39.33*	50-150		WG608521
Chromium,Hexavalent	mg/kg	10.8	0	20	54.0	50-150	L590755-10	WG608845
1-Methylnaphthalene	mg/kg	0.0260	0	.033	78.8	25-155	L590755-10	WG609184
2-Chloronaphthalene	mg/kg	0.0264	0	.033	80.1	31-153	L590755-10	WG609184
2-Methylnaphthalene	mg/kg	0.0265	0	.033	80.4	22-172	L590755-10	WG609184
Acenaphthene	mg/kg	0.0262	0	.033	79.5	43-133	L590755-10	WG609184
Acenaphthylene	mg/kg	0.0257	0	.033	77.9	42-146	L590755-10	WG609184
Anthracene	mg/kg	0.0268	0	.033	81.1	38-153	L590755-10	WG609184
Benzo(a)anthracene	mg/kg	0.0252	0	.033	76.5	31-142	L590755-10	WG609184
Benzo(a)pyrene	mg/kg	0.0258	0	.033	78.2	26-152	L590755-10	WG609184
Benzo(b)fluoranthene	mg/kg	0.0380	0	.033	115.	10-188	L590755-10	WG609184
Benzo(g,h,i)perylene	mg/kg	0.00833	0	.033	25.2	10-176	L590755-10	WG609184
Benzo(k)fluoranthene	mg/kg	0.0348	0	.033	105.	22-163	L590755-10	WG609184
Chrysene	mg/kg	0.0244	0	.033	73.9	26-146	L590755-10	WG609184
Dibenz(a,h)anthracene	mg/kg	0.00996	0	.033	30.2	10-160	L590755-10	WG609184
Fluoranthene	mg/kg	0.0330	0	.033	100.	23-160	L590755-10	WG609184
Fluorene	mg/kg	0.0271	0	.033	82.2	44-143	L590755-10	WG609184
Indeno(1,2,3-cd)pyrene	mg/kg	0.00975	0	.033	29.5	10-157	L590755-10	WG609184
Naphthalene	mg/kg	0.0264	0	.033	79.9	22-156	L590755-10	WG609184
Phenanthrene	mg/kg	0.0288	0	.033	87.2	23-164	L590755-10	WG609184
Pyrene	mg/kg	0.0372	0	.033	112.	12-170	L590755-10	WG609184

\* Performance of this Analyte is outside of established criteria.

For additional information, please see Attachment A 'List of Analytes with QC Qualifiers.'



**YOUR LAB OF CHOICE**

EnCana Oil & Gas - Rangely, CO  
Blake Ford  
1125 Escalante Drive

Rangely, CO 81648-3600

Quality Assurance Report  
Level II

L590755

12065 Lebanon Rd.  
Mt. Juliet, TN 37122  
(615) 758-5858  
1-800-767-5859  
Fax (615) 758-5859

Tax I.D. 62-0814289

Est. 1970

August 28, 2012

Analyte	Units	MS Res	Matrix Spike		% Rec	Limit	Ref Samp	Batch
			Ref Res	TV				
2-Fluorobiphenyl					78.63	34-129		
Nitrobenzene-d5					70.86	14-141		
p-Terphenyl-d14					123.7	25-139		
TPH (GC/FID) High Fraction	ppm	48.2	13.0	60	58.6	50-150	L591659-01	WG609282
o-Terphenyl					54.66	50-150		WG609282

Analyte	Units	MSD	Matrix Spike Duplicate		Limit	RPD	Limit	Ref Samp	Batch
			Ref	%Rec					
Benzene	mg/kg	0.198	0.207	79.2	32-137	4.47	39	L590755-05	WG608381
Ethylbenzene	mg/kg	0.237	0.245	94.7	10-150	3.23	44	L590755-05	WG608381
Toluene	mg/kg	0.224	0.232	89.8	20-142	3.50	42	L590755-05	WG608381
Total Xylene	mg/kg	0.716	0.741	95.4	16-141	3.46	46	L590755-05	WG608381
a,a,a-Trifluorotoluene(FID)				100.7	59-128				WG608381
TPH (GC/FID) Low Fraction	mg/kg	19.0	21.5	69.2	55-109	12.1	20	L590755-05	WG608381
a,a,a-Trifluorotoluene(FID)				101.2	59-128				WG608381
Mercury	mg/kg	0.268	0.248	107.	80-120	7.75	20	L590755-10	WG608380
Arsenic	mg/kg	41.2	46.4	77.1	75-125	11.9	20	L590865-05	WG608588
Barium	mg/kg	211.	208.	174.*	75-125	1.43	20	L590724-03	WG608699
Cadmium	mg/kg	48.2	46.9	96.4	75-125	2.73	20	L590724-03	WG608699
Chromium	mg/kg	89.3	87.3	99.2	75-125	2.27	20	L590724-03	WG608699
Copper	mg/kg	60.4	59.1	101.	75-125	2.18	20	L590724-03	WG608699
Lead	mg/kg	55.0	54.1	93.6	75-125	1.65	20	L590724-03	WG608699
Nickel	mg/kg	59.8	58.2	93.0	75-125	2.71	20	L590724-03	WG608699
Selenium	mg/kg	44.5	43.6	89.0	75-125	2.04	20	L590724-03	WG608699
Silver	mg/kg	48.0	46.8	96.0	75-125	2.53	20	L590724-03	WG608699
Zinc	mg/kg	93.9	92.9	99.4	75-125	1.07	20	L590724-03	WG608699
Arsenic	mg/kg	42.3	39.0	84.6	75-125	8.12	20	L590724-03	WG608699
Arsenic	mg/kg	47.2	39.0	94.4	75-125	19.0	20	L590724-03	WG608699
Barium	mg/kg	233.	74.6	422.*	75-125	103.*	20	L590932-04	WG608699
Cadmium	mg/kg	49.6	51.8	99.0	75-125	4.34	20	L590932-04	WG608699
Chromium	mg/kg	64.0	67.6	104.	75-125	5.47	20	L590932-04	WG608699
Copper	mg/kg	52.3	54.3	101.	75-125	3.75	20	L590932-04	WG608699
Lead	mg/kg	55.8	58.7	94.8	75-125	5.07	20	L590932-04	WG608699
Nickel	mg/kg	51.9	55.8	88.5	75-125	7.24	20	L590932-04	WG608699
Selenium	mg/kg	46.5	46.4	93.0	75-125	0.215	20	L590932-04	WG608699
Silver	mg/kg	47.3	48.9	94.6	75-125	3.33	20	L590932-04	WG608699
Zinc	mg/kg	60.7	63.2	106.	75-125	4.04	20	L590932-04	WG608699
TPH (GC/FID) High Fraction	ppm	58.0	64.4	82.0	50-150	10.4	25	L590755-07	WG608521
o-Terphenyl				42.24*	50-150				WG608521
Chromium,Hexavalent	mg/kg	10.4	10.8	52.0	50-150	3.77	20	L590755-10	WG608845
1-Methylnaphthalene	mg/kg	0.0290	0.0260	88.0	25-155	11.0	27	L590755-10	WG609184
2-Chloronaphthalene	mg/kg	0.0277	0.0264	84.0	31-153	4.75	22	L590755-10	WG609184
2-Methylnaphthalene	mg/kg	0.0289	0.0265	87.5	22-172	8.49	29	L590755-10	WG609184
Acenaphthene	mg/kg	0.0307	0.0262	93.0	43-133	15.7	26	L590755-10	WG609184
Acenaphthylene	mg/kg	0.0275	0.0257	83.2	42-146	6.63	22	L590755-10	WG609184
Anthracene	mg/kg	0.0258	0.0268	78.3	38-153	3.57	27	L590755-10	WG609184

\* Performance of this Analyte is outside of established criteria.

For additional information, please see Attachment A 'List of Analytes with QC Qualifiers.'



EnCana Oil & Gas - Rangely, CO  
Blake Ford  
1125 Escalante Drive

Rangely, CO 81648-3600

Quality Assurance Report  
Level II

L590755

12065 Lebanon Rd.  
Mt. Juliet, TN 37122  
(615) 758-5858  
1-800-767-5859  
Fax (615) 758-5859

Tax I.D. 62-0814289

Est. 1970

August 28, 2012

Analyte	Units	MSD	Matrix Spike Duplicate		Limit	RPD	Limit	Ref	Samp	Batch
			Ref	%Rec						
Benzo(a)anthracene	mg/kg	0.0280	0.0252	84.9	31-142	10.4	31	L590755-10		WG609184
Benzo(a)pyrene	mg/kg	0.0337	0.0258	102.	26-152	26.6	32	L590755-10		WG609184
Benzo(b)fluoranthene	mg/kg	0.0496	0.0380	150.	10-188	26.4	33	L590755-10		WG609184
Benzo(g,h,i)perylene	mg/kg	0.00821	0.00833	24.9	10-176	1.48	30	L590755-10		WG609184
Benzo(k)fluoranthene	mg/kg	0.0458	0.0348	139.	22-163	27.2	29	L590755-10		WG609184
Chrysene	mg/kg	0.0255	0.0244	77.2	26-146	4.41	30	L590755-10		WG609184
Dibenz(a,h)anthracene	mg/kg	0.00946	0.00996	28.7	10-160	5.16	39	L590755-10		WG609184
Fluoranthene	mg/kg	0.0316	0.0330	95.7	23-160	4.52	22	L590755-10		WG609184
Fluorene	mg/kg	0.0323	0.0271	97.8	44-143	17.3	23	L590755-10		WG609184
Indeno(1,2,3-cd)pyrene	mg/kg	0.00932	0.00975	28.2	10-157	4.45	40	L590755-10		WG609184
Naphthalene	mg/kg	0.0290	0.0264	88.0	22-156	9.64	27	L590755-10		WG609184
Phenanthrene	mg/kg	0.0332	0.0288	100.	23-164	14.2	25	L590755-10		WG609184
Pyrene	mg/kg	0.0323	0.0372	97.9	12-170	14.0	24	L590755-10		WG609184
2-Fluorobiphenyl				85.15	34-129					WG609184
Nitrobenzene-d5				79.87	14-141					WG609184
p-Terphenyl-d14				103.6	25-139					WG609184
TPH (GC/FID) High Fraction	ppm	44.7	48.2	52.8	50-150	7.52	25	L591659-01		WG609282
o-Terphenyl				47.51*	50-150					WG609282

Batch number /Run number / Sample number cross reference

WG608381: R2310334: L590755-05 06 07 08 09 10  
WG608464: R2310633: L590755-10  
WG608380: R2310835: L590755-10  
WG608588: R2311574: L590755-01 02 03 04  
WG608838: R2312033: L590755-10  
WG608699: R2312517: L590755-10  
WG608521: R2312575: L590755-07 08 09 10  
WG608793: R2313233: L590755-05  
WG608709: R2313716: L590755-10  
WG609013: R2314213: L590755-10  
WG608845: R2315058: L590755-10  
WG609184: R2316313: L590755-10  
WG609282: R2317873: L590755-06

\* \* Calculations are performed prior to rounding of reported values.

\* Performance of this Analyte is outside of established criteria.

For additional information, please see Attachment A 'List of Analytes with QC Qualifiers.'



**YOUR LAB OF CHOICE**

EnCana Oil & Gas - Rangely, CO  
Blake Ford  
1125 Escalante Drive

Rangely, CO 81648-3600

Quality Assurance Report  
Level II

L590755

12065 Lebanon Rd.  
Mt. Juliet, TN 37122  
(615) 758-5858  
1-800-767-5859  
Fax (615) 758-5859

Tax I.D. 62-0814289

Est. 1970

August 28, 2012

The data package includes a summary of the analytic results of the quality control samples required by the SW-846 or CWA methods. The quality control samples include a method blank, a laboratory control sample, and the matrix spike/matrix spike duplicate analysis. If a target parameter is outside the method limits, every sample that is effected is flagged with the appropriate qualifier in Appendix B of the analytic report.

Method Blank - an aliquot of reagent water carried through the entire analytic process. The method blank results indicate if any possible contamination exposure during the sample handling, digestion or extraction process, and analysis. Concentrations of target analytes above the reporting limit in the method blank are qualified with the "B" qualifier.

Laboratory Control Sample - is a sample of known concentration that is carried through the digestion/extraction and analysis process. The percent recovery, expressed as a percentage of the theoretical concentration, has statistical control limits indicating that the analytic process is "in control". If a target analyte is outside the control limits for the laboratory control sample or any other control sample, the parameter is flagged with a "J4" qualifier for all effected samples.

Matrix Spike and Matrix Spike Duplicate - is two aliquots of an environmental sample that is spiked with known concentrations of target analytes. The percent recovery of the target analytes also has statistical control limits. If any recoveries that are outside the method control limits, the sample that was selected for matrix spike/matrix spike duplicate analysis is flagged with either a "J5" or a "J6". The relative percent difference (%RPD) between the matrix spike and the matrix spike duplicate recoveries is all calculated. If the RPD is above the method limit, the effected samples are flagged with a "J3" qualifier.

Company Name/Address  <b>*ENCANRCO-RULEENG*</b>  <b>Encana Oil &amp; Gas</b> <b>1125 ESCALANTE DRIVE</b> <b>RANGELY, CO 81648-3600</b>  <b>*ENCANRCO-RULEENG*</b>				Billing Information  Blake Ford 1125 Escalante Drive Rangely, CO 81648-3600  Report to: Blake Ford  E-mail to: Blake Ford, Scotty Mann, Brad Ward				Analysis/Container/Preservative <table border="1" style="width:100%; border-collapse: collapse;"> <tr> <td style="writing-mode: vertical-rl; transform: rotate(180deg);">BTXGRO / DRO - 8021/8015</td> <td style="writing-mode: vertical-rl; transform: rotate(180deg);">SV8270PAHSIM - 8270SIM</td> <td style="writing-mode: vertical-rl; transform: rotate(180deg);">SPCON - 9050AMod</td> <td style="writing-mode: vertical-rl; transform: rotate(180deg);">SAR - Calc.</td> <td style="writing-mode: vertical-rl; transform: rotate(180deg);">RCRA8 Metals + Cu, Ni, and Zn - 6010/7470</td> <td style="writing-mode: vertical-rl; transform: rotate(180deg);">CR6SS - 3060A/7196</td> <td style="writing-mode: vertical-rl; transform: rotate(180deg);">CR3 - Calc.</td> <td style="writing-mode: vertical-rl; transform: rotate(180deg);">As</td> </tr> </table>								BTXGRO / DRO - 8021/8015	SV8270PAHSIM - 8270SIM	SPCON - 9050AMod	SAR - Calc.	RCRA8 Metals + Cu, Ni, and Zn - 6010/7470	CR6SS - 3060A/7196	CR3 - Calc.	As	Chain of Custody Page 1 of 1	
BTXGRO / DRO - 8021/8015	SV8270PAHSIM - 8270SIM	SPCON - 9050AMod	SAR - Calc.	RCRA8 Metals + Cu, Ni, and Zn - 6010/7470	CR6SS - 3060A/7196	CR3 - Calc.	As																		
Project Description: <b>1314 SITE CLEARANCE</b>								Prepared by:  <b>ENVIRONMENTAL SCIENCE CORP</b>  12065 Lebanon Road Mt. Juliet TN 37122  Phone (615)758-5858 Phone (800) 767-5859 FAX (615)758-5859																	
PHONE:		FAX:										Client Project No. <b>1314</b>		ENCANRCO-RULEENG											
Collected by: Brad Ward		Site/Facility ID# <b>1314</b>										P.O.#													
Collected by(signature):  		<b>Rush?</b> (Lab MUST be Notified) _____ Same Day.....200% _____ Next Day.....100% _____ Two Day.....50%		Date Results Needed Email? <input type="checkbox"/> No <input checked="" type="checkbox"/> Yes FAX? <input type="checkbox"/> No <input checked="" type="checkbox"/> Yes		No of Cntrs		CoCode (lab use only) <b>*ENCANRCO-RULEENG*</b> Template/Prelogin  Shipped Via:																	
Immediately Packed on Ice N <input type="checkbox"/> Y <input checked="" type="checkbox"/> X <input type="checkbox"/>		Sample ID		Comp/Grab		Matrix		Depth		Date		Time		Cntrs		Remarks/contaminant		Sample # (lab only)							
		1314-BG1N-6"-081512		GRAB		SS		6"		8/15/12		1551		1		X		L590 755 -01							
		1314-BG2E-6"-081512		GRAB		SS		6"		8/15/12		1603		1		X		-02							
		1314-BG3S-6"-081512		GRAB		SS		6"		8/15/12		1614		1		X		-03							
		1314-BG4W-6"-081512		GRAB		SS		6"		8/15/12		1628		1		X		-04							
		1314-NSW-4'-081512		GRAB		SS		4'		8/15/12		1356		2		X		-05							
		1314-ESW-5'-081512		GRAB		SS		5'		8/15/12		1407		2		X		-06							
		1314-SSW-9'-081512		GRAB		SS		9'		8/15/12		1418		2		X		-07							
		1314-WSW-5'-081512		GRAB		SS		5'		8/15/12		1429		2		X		-08							
		1314-BBT-10'-081512		GRAB		SS		10'		8/15/12		1437		2		X		-09							
		1314-ETS-081512		COMP		SS		3-9"		8/15/12		1502		3		X X X X X X X X		-10							

Matrix: SS-Soil/Solid GW-Groundwater WW-Wastewater DW-Drinking Water OT- Other \_\_\_\_\_

pH \_\_\_\_\_ Temp \_\_\_\_\_

Remarks:

Relinquisher by: (Signature) 		Date: <b>8/16/12</b>		Time: <b>0700</b>		Received by: (Signature) 		Samples returned via: FedEx <input checked="" type="checkbox"/> UPS <input type="checkbox"/> Other _____		Condition (lab use only) <b>TE</b> <b>OK</b>			
Relinquisher by: (Signature)		Date:		Time:		Received by: (Signature)		Temp: <b>3.2°C</b>		Bottles Received: <b>17402</b>		COC Seals Intact <input checked="" type="checkbox"/> N <input type="checkbox"/> NA	
Relinquisher by: (Signature)		Date:		Time:		Received for lab by: (Signature) 		Date: <b>8-18-12</b>		Time: <b>0900</b>		pH Checked: NCF:	