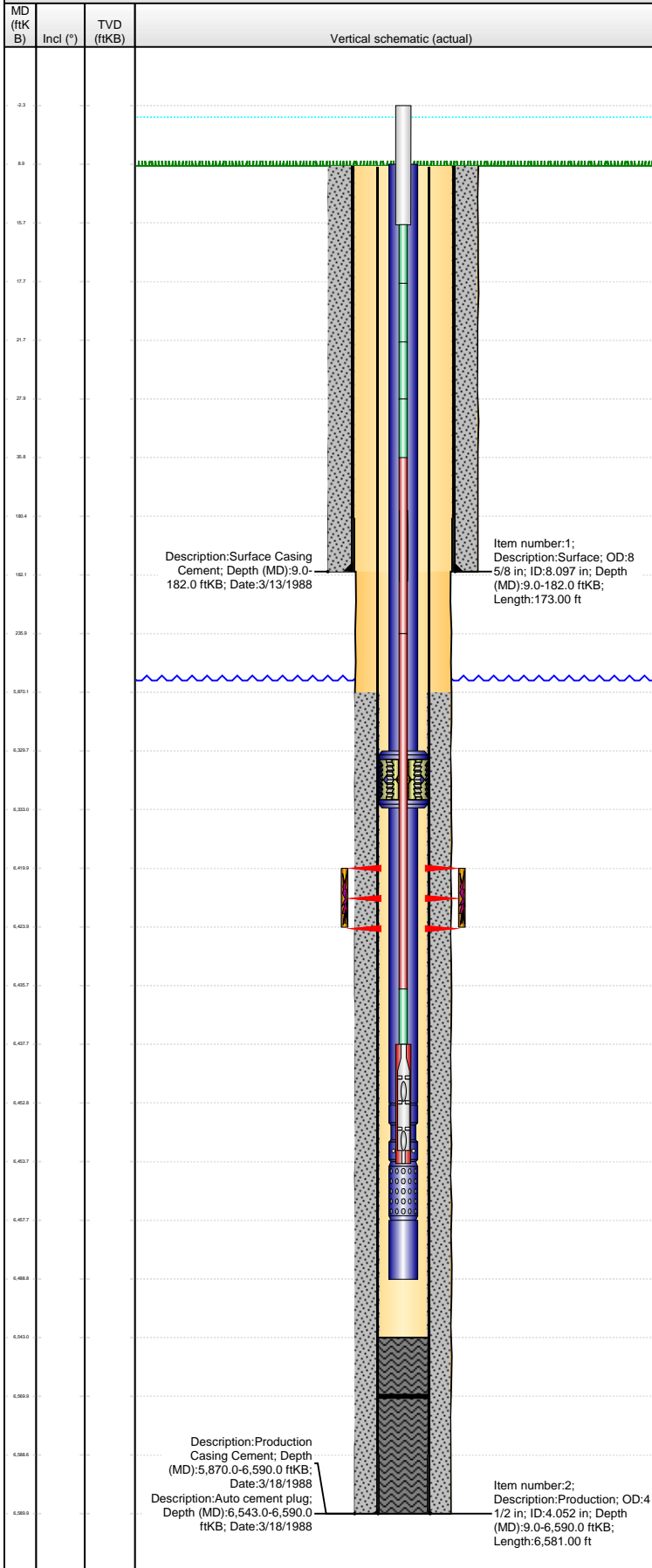


Well Name: LILLI UNIT 06-08A

VERTICAL - Original Hole, 6/24/2013 1:26:05 PM



Well Header

API 05-123-13875	Business Unit WATTENBERG	District 25	Well Config VERTICAL
Original KB Elevation (ft) 4,787.00	KB - GL / MSL (ftKB) 9.00	Spud Date 3/13/1988	P & A Date
Comment			

Directions To Well

RD 96 & 127, W 2, S 3/10, W INTO.

Congressional Location

Quarter 1	Quarter 2	Quarter 3	Quarter 4	Section	Township	Twnshp N...	Range	Rng E/W Dir
	NW	SE	NW	8	8	N	58	W

Bottom Hole Location

North-South Distance (ft)	From N or S Line	East-West Distance (ft)	From E or W Line
---------------------------	------------------	-------------------------	------------------

Plug Back Total Depths

Date	Depth (ftKB)	Method	Com
3/25/1988	6,570.0	CASED HOLE LOG	

Wellbore Sections

Section Des	Size (in)	Act Top (ftKB)	Act Btm (ftKB)
SURFACE	12 1/4	9.0	182.0
PRODUCTION	7 7/8	182.0	6,590.0

Zone Statuses

Zone Name	Status Date	Status	Job
-----------	-------------	--------	-----

Casing Strings

Casing Description	Run Date	OD (in)	Wt/Len (l...	Grade	Top (ftKB)	MD (ftKB)
Surface	3/13/1988	8 5/8	24.00	J-55	9.0	182.0

Production, 6,590.0ftKB

Casing Description	Run Date	OD (in)	Wt/Len (l...	Grade	Top (ftKB)	MD (ftKB)
Production	3/18/1988	4 1/2	10.50	J-55	9.0	6,590.0

Cement

Description	Top Depth (ftKB)	Bottom Depth (ftKB)
Surface Casing Cement	9.0	182.0
Production Casing Cement	5,870.0	6,590.0

Tubing Components

Item Des	OD (in)	Wt (lb/ft)	Grade	Jts	Len (ft)	Btm (ftKB)	Btm (TVD) (ftKB)
Tubing	2 3/8	4.70	J-55	202	6,320.79	6,329.7	
Anchor/catcher	3.99	4.70	J-55	1	3.20	6,332.9	
Tubing	2 3/8	4.70	J-55	4	119.74	6,452.7	
Pump Seating Nipple	2 3/8	4.70	N-80	1	1.10	6,453.8	
Perforated Joint	2 3/8	4.70	J-55	1	4.00	6,457.8	
Tubing	2 3/8	4.70	J-55	1	31.00	6,488.8	
Bull Plug	2 3/8	4.70	N-80	1	0.22	6,489.0	

Rods & Pumps

Rod Description	Run Date	Set Depth (ftKB)
Rod	4/19/2011	6,453.8

Comment

Item Description	OD Nominal (in)	Joints	Length (ft)
Polished Rod	1 1/4	1	18.00
Pony Rod	3/4	1	2.00
Pony Rod	3/4	1	4.00
Pony Rod	3/4	1	6.00
Pony Rod	3/4	1	8.00
Rod Guide	3/4	8	200.00
Sucker Rod	3/4	248	6,200.00
Pony Rod	3/4	1	2.00
RHBC Pump - BHD	1 1/4	1	16.00

Well Name: LILLI UNIT 06-08A

VERTICAL - Original Hole, 6/24/2013 1:26:06 PM			API Pump Type R	Barrel Length (ft) 16.00	Seating Assembly Type C
MD (ftKB)	Incl (")	TVD (ftKB)	Vertical schematic (actual)		
2.3					
9.9					
19.7					
27.7					
31.7					
31.9					
35.9					
180.4					
182.1					
228.9					
5,870.1			<p>Description: Surface Casing Cement; Depth (MD): 9.0-182.0 ftKB; Date: 3/13/1988</p> <p>Item number: 1; Description: Surface; OD: 8 5/8 in; ID: 8.097 in; Depth (MD): 9.0-182.0 ftKB; Length: 173.00 ft</p>		
6,200.7			<p>Description: Production Casing Cement; Depth (MD): 5,870.0-6,590.0 ftKB; Date: 3/18/1988</p> <p>Description: Auto cement plug; Depth (MD): 6,543.0-6,590.0 ftKB; Date: 3/18/1988</p> <p>Item number: 2; Description: Production; OD: 4 1/2 in; ID: 4.052 in; Depth (MD): 9.0-6,590.0 ftKB; Length: 6,581.00 ft</p>		
6,389.9					
6,419.9					
6,433.9					
6,452.7					
6,457.7					
6,462.8					
6,453.7					
6,457.7					
6,489.9					
6,540.0					
6,589.9					
6,586.6					
6,589.9					

Perforation Data					
Zone	Bnch/St g	Entered Shot Total	Top (ftKB)	Btm (ftKB)	Date
D SAND, Original Hole		16	6,420.00	6,424.00	3/26/1988
D SAND, Original Hole		16	6,420.00	6,424.00	4/3/1992
Stimulations & Treatments					
Date	Zone		Primary Job Type		
3/29/1988	D SAND, Original Hole		DRILLING/COMPLETION - ORIGINAL		
Technical Result		Tech Result Details		Tech Result Note	
Comment					
Other In Hole					
Run Date	Des		OD (in)	Top (ftKB)	Btm (ftKB)
Logs					
Date	Type		Top (ftKB)	Btm (ftKB)	