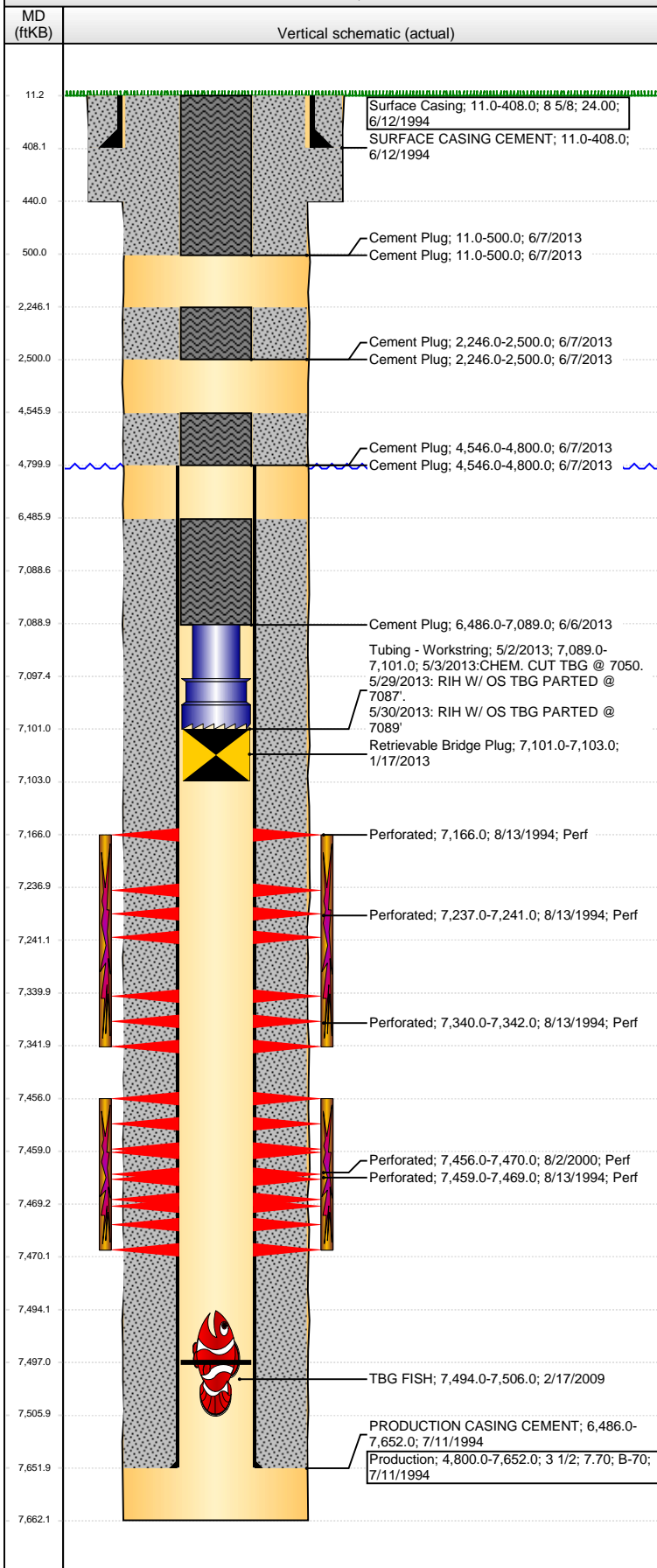


Well Name: UPRC 23-1417

DEVIATED - ORIGINAL HOLE, 6/21/2013 10:45:03 AM



Well Header

API	Business Unit	District	Well Config
05-123-18313	WATTENBERG	15	DEVIATED
Original KB Elevation (ft)	KB - GL / MSL (ftKB)	Spud Date	P & A Date
4,902.00	11.00	6/12/1994	6/7/2013

Comment

DIRECTIONAL WELLBORE
RMOR WLTC RBP, RET HEAD, 2 3/8" X 6.00' X-OVER, & 6.00' 2 1/16" TBG.
UNSUCCESSFULLY FISHED @ 7101'. TBG TOP @ 7089'

Directions To Well

RD 42 & RD 21, E. 7/10 INTO
EAST WELL OF 4 WELL PAD

Congressional Location

Quarter 1	Quarter 2	Quarter 3	Quarter 4	Section	Township	Twntshp N...	Range	Rng E/W Dir
		SE	SW	23	4	N	67	W

Bottom Hole Location

North-South Distance (ft)	From N or S Line	East-West Distance (ft)	From E or W Line
603.0	FSL	2,003.0	FWL

Plug Back Total Depths

Date	Depth (ftKB)	Method	Com
7/11/1994	7,630.0	CASING TALLY	
8/18/2000	7,472.0	TAG	C/O WELL, TAG SAND & LAND TBG
2/17/2009	7,494.0	TAG	C/O WELL WITH BURN SHOE TO 7506' LEFT 12' F...
1/16/2013	7,497.0	TAG	

Wellbore Sections

Section Des	Size (in)	Act Top (ftKB)	Act Btm (ftKB)
SURFACE	11	11.0	440.0
PRODUCTION	7 7/8	440.0	7,662.0

Zone Statuses

Zone Name	Status Date	Status	Job
NIOBRARA	9/10/1994	PR	DRILLING/COMPLETION - ORIGINAL, 6/12/1994 00:00
NIOBRARA	6/6/2013	P&A	ABANDON WELL, 6/4/2013 06:00
CODELL	9/10/1994	PR	DRILLING/COMPLETION - ORIGINAL, 6/12/1994 00:00
CODELL	8/21/2000	PR	RE-FRAC, 5/9/2000 00:00
CODELL	3/23/2009	PR	TRI-FRAC, 1/14/2009 06:00
CODELL	6/6/2013	P&A	ABANDON WELL, 6/4/2013 06:00

Casing Strings

Surface Casing, 408.0ftKB

Casing Description	Run Date	OD (in)	Wt/Len (l...)	Grade	Top (ftKB)	MD (ftKB)
Surface Casing	6/12/1994	8 5/8	24.00		11.0	408.0

Production, 7,652.0ftKB

Casing Description	Run Date	OD (in)	Wt/Len (l...)	Grade	Top (ftKB)	MD (ftKB)
Production	7/11/1994	3 1/2	7.70	B-70	11.0	7,652.0

Cement

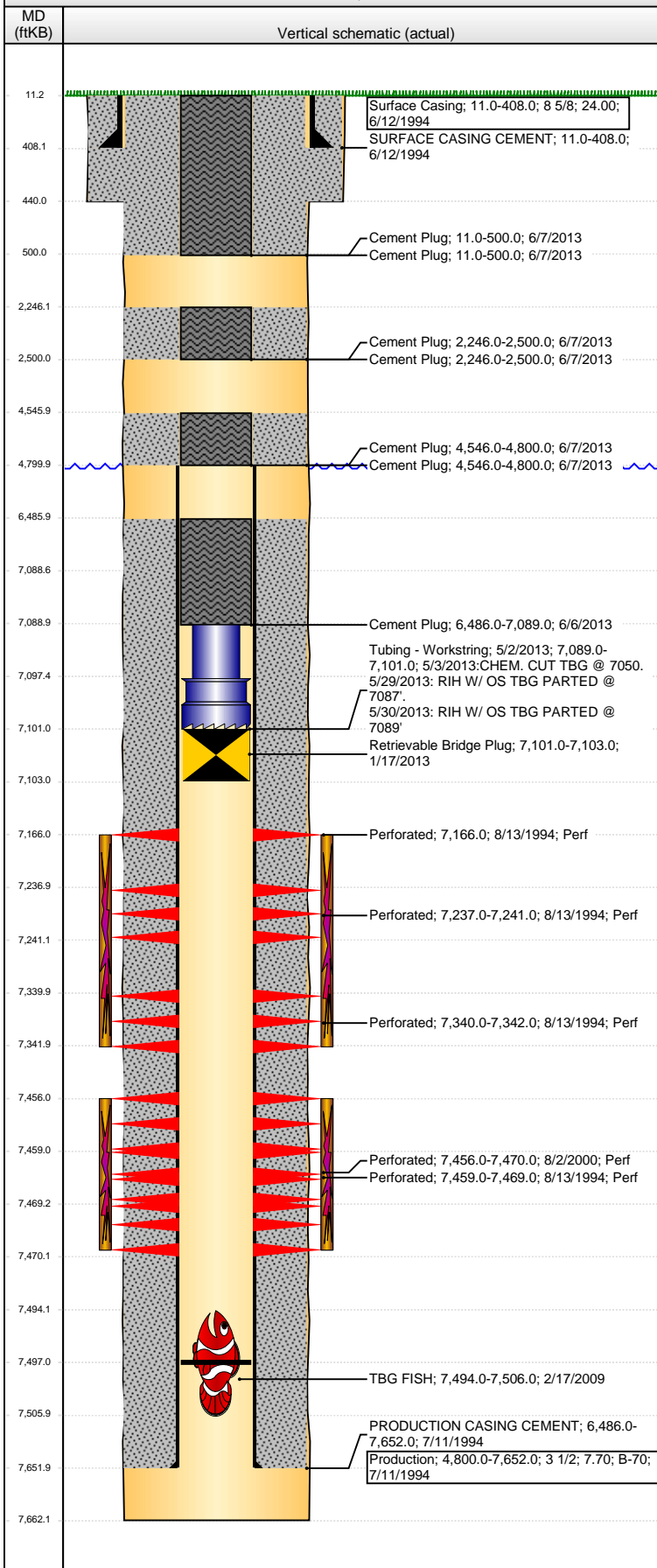
Description	Top Depth (ftKB)	Bottom Depth (ftKB)
SURFACE CASING CEMENT	11.0	408.0
PRODUCTION CASING CEMENT	6,486.0	7,652.0
Cement Plug	6,486.0	7,089.0
Cement Plug	4,546.0	4,800.0
Cement Plug	4,546.0	4,800.0
Cement Plug	2,246.0	2,500.0
Cement Plug	2,246.0	2,500.0
Cement Plug	11.0	500.0
Cement Plug	11.0	500.0

Tubing Components

Item Des	OD (in)	Wt (lb/ft)	Grade	Jts	Len (ft)	Btm (ftKB)	Btm (TVD) (ftKB)
Tubing Fish 9.00'	2 1/16	3.25	N-80	1	9.00	7,097.6	
RMOR Ret Head for RBP.	2.99			1	3.40	7,101.0	

Well Name: UPRC 23-1417

DEVIATED - ORIGINAL HOLE, 6/21/2013 10:45:04 AM



Perforation Data						
Zone	Bnch/St g	Entered Shot Total	Top (ftKB)	Btm (ftKB)	Date	
NIOBRARA, ORIGINAL HOLE	A	1	7,166.00	7,166.00	8/13/1994	
NIOBRARA, ORIGINAL HOLE	B	3	7,237.00	7,241.00	8/13/1994	
NIOBRARA, ORIGINAL HOLE	C	2	7,340.00	7,342.00	8/13/1994	
CODELL, ORIGINAL HOLE		56	7,456.00	7,470.00	8/2/2000	
CODELL, ORIGINAL HOLE		9	7,459.00	7,469.00	8/13/1994	

Stimulations & Treatments			
Date	Zone	Primary Job Type	
8/24/1994	NIOBRARA-CODELL, ORIGINAL HOLE	DRILLING/COMPLETION - ORIGINAL	
Technical Result		Tech Result Details	Tech Result Note

Date	Zone	Primary Job Type	
8/17/2000	CODELL, ORIGINAL HOLE	RE-FRAC	
Technical Result		Tech Result Details	Tech Result Note
Comment			

Date	Zone	Primary Job Type	
2/6/2009	CODELL, ORIGINAL HOLE	TRI-FRAC	
Technical Result	Tech Result Details		Tech Result Note
Success	According to Plan		

CONCURRENT WITH CODELL RF ON GRAY O 26-03 (CODELL TF): JOB WENT GREAT WITH NO ISSUES TO REPORT. POST JOB 5 MIN 3254

Other In Hole				
Run Date	Des	OD (in)	Top (ftKB)	Btm (ftKB)
2/17/2009	TBG FISH	2 1/16	7,494.0	7,506.0
1/17/2013	Retrieval Bridge Plug	2.9	7,101.0	7,103.0

Logs			
Date	Type	Top (ftKB)	Btm (ftKB)
8/13/1994	Sonic Cement bond	50.0	7,569.0
9/24/2012	GYRO	11.0	7,400.0