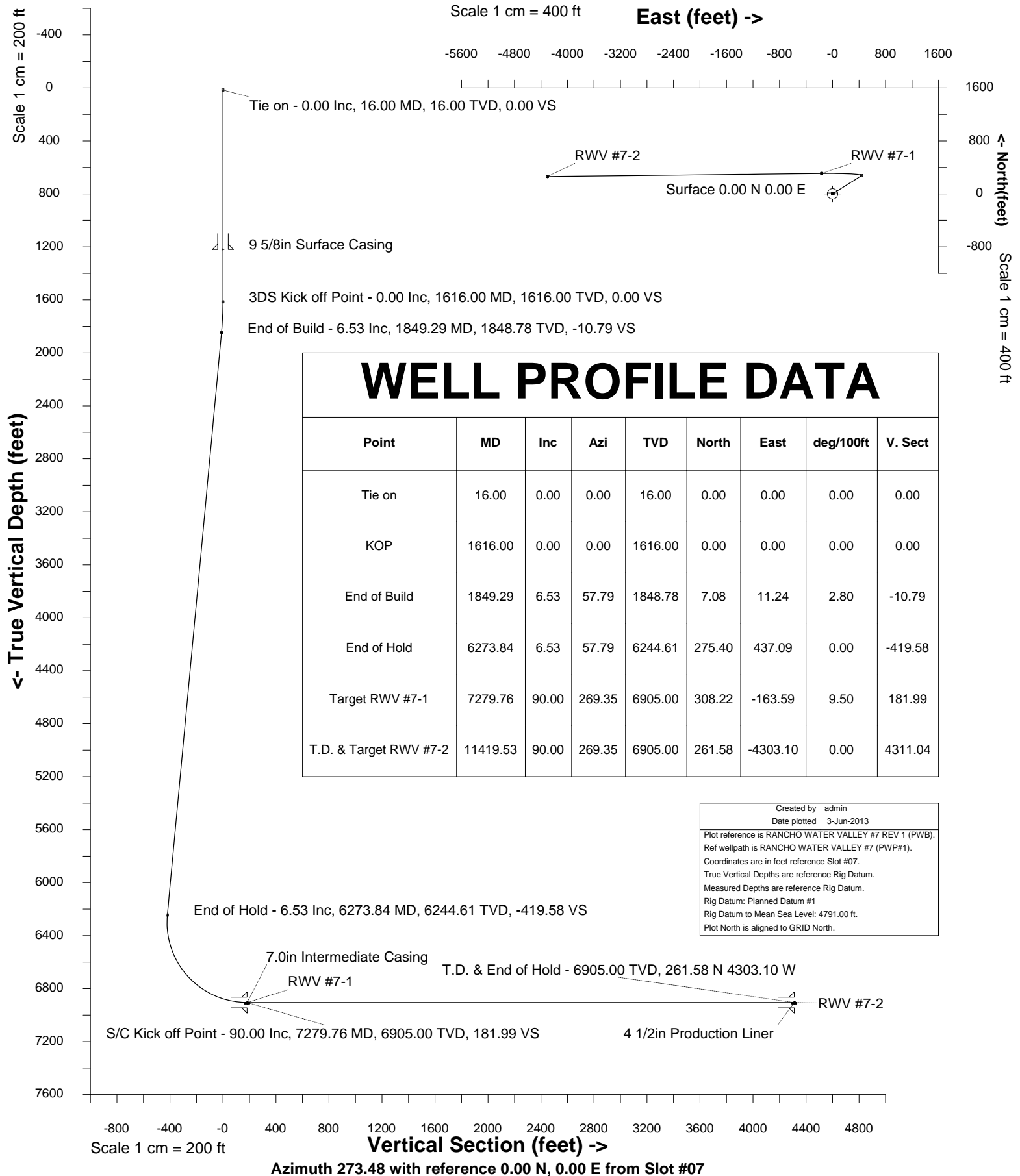


Location	Windsor, CO, USA(Imported)	Slot	Slot #07
Field	Windsor Project	Well	RANCHO WATER VALLEY #7
Installation	Rancho Water Valley	Wellbore	RANCHO WATER VALLEY #7 REV 1 (PWB)





INTEGRATED PETROLEUM TECHNOLOGIES, INC
SYSDRILL
Well Design Combined Report
Wellbore: RANCHO WATER VALLEY #7 REV 1 (PWB)

Wellhead Details							
Name	Northing	Easting	Latitude	Longitude	North	East	Elevation Above Inst.
Slot #07	1402073.4734	3170296.5403	N40 26 7.7312	W104 53 17.5920	0.00N	47.32W	-0.00

Declination			
Date	Source	Time	
16-Oct-2012	IGRF Model [1900.0-2015.0]	18:46	
25-Apr-2013	IGRF Model [1900.0-2015.0]	09:52	
3-Jun-2013	IGRF Model [1900.0-2015.0]	08:21	

Site Details				
Name	Northing	Easting	Coord System Name	North Alignment
Rancho Water Valley	1402073.4733	3170343.8622	CO83-NF on NORTH AMERICAN DATUM 1983 datum	Grid

Summary Wellpath									
MD[ft]	Inc[deg]	Azi[deg]	TVD[ft]	North[ft]	East[ft]	Dogleg [deg/100ft]	Vertical Section[ft]	Northing	Easting
16.00	0.00	0.000	16.00	0.00N	0.00E		0.00	1402073.47	3170296.54
1616.00	0.00	0.000	1616.00	0.00N	0.00E	==>	0.00	1402073.47	3170296.54
1849.29	6.53	57.790	1848.78	7.08N	11.24E	2.80	-10.79	1402080.55	3170307.78
6273.84	6.53	57.790	6244.61	275.40N	437.09E		-419.58	1402348.86	3170733.62
7279.76	90.00	269.350	6905.00	308.22N	163.59W	9.50	181.99	1402381.68	3170132.96
11419.53	90.00	269.350	6905.00	261.58N	4303.10W	==>	4311.04	1402335.04	3165993.62

Interpolated Wellpath									
MD[ft]	Inc[deg]	Azi[deg]	TVD[ft]	North[ft]	East[ft]	Dogleg [deg/100ft]	Vertical Section[ft]	Northing	Easting
0.00	0.00	0.000	0.00	0.00N	0.00E		0.00	1402073.47	3170296.54
16.00	0.00	0.000	16.00	0.00N	0.00E	==>	0.00	1402073.47	3170296.54
100.00	0.00	0.000	100.00	0.00N	0.00E	==>	0.00	1402073.47	3170296.54
200.00	0.00	0.000	200.00	0.00N	0.00E	==>	0.00	1402073.47	3170296.54
300.00	0.00	0.000	300.00	0.00N	0.00E	==>	0.00	1402073.47	3170296.54
400.00	0.00	0.000	400.00	0.00N	0.00E	==>	0.00	1402073.47	3170296.54
500.00	0.00	0.000	500.00	0.00N	0.00E	==>	0.00	1402073.47	3170296.54
600.00	0.00	0.000	600.00	0.00N	0.00E	==>	0.00	1402073.47	3170296.54
700.00	0.00	0.000	700.00	0.00N	0.00E	==>	0.00	1402073.47	3170296.54
800.00	0.00	0.000	800.00	0.00N	0.00E	==>	0.00	1402073.47	3170296.54
900.00	0.00	0.000	900.00	0.00N	0.00E	==>	0.00	1402073.47	3170296.54
1000.00	0.00	0.000	1000.00	0.00N	0.00E	==>	0.00	1402073.47	3170296.54
1100.00	0.00	0.000	1100.00	0.00N	0.00E	==>	0.00	1402073.47	3170296.54
1200.00	0.00	0.000	1200.00	0.00N	0.00E	==>	0.00	1402073.47	3170296.54
1300.00	0.00	0.000	1300.00	0.00N	0.00E	==>	0.00	1402073.47	3170296.54
1400.00	0.00	0.000	1400.00	0.00N	0.00E	==>	0.00	1402073.47	3170296.54
1500.00	0.00	0.000	1500.00	0.00N	0.00E	==>	0.00	1402073.47	3170296.54
1600.00	0.00	0.000	1600.00	0.00N	0.00E	==>	0.00	1402073.47	3170296.54
1616.00	0.00	0.000	1616.00	0.00N	0.00E	==>	0.00	1402073.47	3170296.54
1700.00	2.35	57.790	1699.98	0.92N	1.46E	2.80	-1.40	1402074.39	3170298.00
1800.00	5.15	57.790	1799.75	4.41N	6.99E	2.80	-6.71	1402077.88	3170303.53
1849.29	6.53	57.790	1848.78	7.08N	11.24E	2.80	-10.79	1402080.55	3170307.78
1900.00	6.53	57.790	1899.17	10.16N	16.12E	==>	-15.47	1402083.63	3170312.66
2000.00	6.53	57.790	1998.52	16.22N	25.74E	==>	-24.71	1402089.69	3170322.28
2100.00	6.53	57.790	2097.87	22.29N	35.37E	==>	-33.95	1402095.76	3170331.91
2200.00	6.53	57.790	2197.22	28.35N	44.99E	==>	-43.19	1402101.82	3170341.53
2300.00	6.53	57.790	2296.57	34.41N	54.62E	==>	-52.43	1402107.89	3170351.16
2400.00	6.53	57.790	2395.92	40.48N	64.24E	==>	-61.67	1402113.95	3170360.78
2500.00	6.53	57.790	2495.27	46.54N	73.87E	==>	-70.91	1402120.01	3170370.41
2600.00	6.53	57.790	2594.62	52.61N	83.49E	==>	-80.15	1402126.08	3170380.03
2700.00	6.53	57.790	2693.97	58.67N	93.12E	==>	-89.39	1402132.14	3170389.65
2800.00	6.53	57.790	2793.32	64.74N	102.74E	==>	-98.63	1402138.21	3170399.28
2900.00	6.53	57.790	2892.67	70.80N	112.37E	==>	-107.87	1402144.27	3170408.90
3000.00	6.53	57.790	2992.02	76.86N	121.99E	==>	-117.10	1402150.33	3170418.53
3100.00	6.53	57.790	3091.38	82.93N	131.62E	==>	-126.34	1402156.40	3170428.15

All data is in Feet unless otherwise stated
Coordinates are from Slot MD's are from Rig and TVD's are from Rig (Planned Datum #1 4791.0ft above Mean Sea Level)
Vertical Section is from 0.00N 0.00E on azimuth 273.480 degrees
Bottom hole distance is 4311.04 Feet on azimuth 273.48 degrees from Wellhead
Calculation method uses Minimum Curvature method
Prepared by Peterson Energy
Date Printed: 3-Jun-2013



INTEGRATED PETROLEUM TECHNOLOGIES, INC
SYSDRILL
Well Design Combined Report
Wellbore: RANCHO WATER VALLEY #7 REV 1 (PWB)

Interpolated Wellpath									
MD[ft]	Inc[deg]	Azi[deg]	TVD[ft]	North[ft]	East[ft]	Dogleg [deg/100ft]	Vertical Section[ft]	Northing	Easting
3200.00	6.53	57.790	3190.73	88.99N	141.24E	==>	-135.58	1402162.46	3170437.78
3300.00	6.53	57.790	3290.08	95.06N	150.87E	==>	-144.82	1402168.53	3170447.40
3400.00	6.53	57.790	3389.43	101.12N	160.49E	==>	-154.06	1402174.59	3170457.03
3500.00	6.53	57.790	3488.78	107.19N	170.12E	==>	-163.30	1402180.65	3170466.65
3600.00	6.53	57.790	3588.13	113.25N	179.74E	==>	-172.54	1402186.72	3170476.27
3700.00	6.53	57.790	3687.48	119.31N	189.37E	==>	-181.78	1402192.78	3170485.90
3800.00	6.53	57.790	3786.83	125.38N	198.99E	==>	-191.02	1402198.85	3170495.52
3900.00	6.53	57.790	3886.18	131.44N	208.62E	==>	-200.26	1402204.91	3170505.15
4000.00	6.53	57.790	3985.53	137.51N	218.24E	==>	-209.50	1402210.97	3170514.77
4100.00	6.53	57.790	4084.88	143.57N	227.87E	==>	-218.73	1402217.04	3170524.40
4200.00	6.53	57.790	4184.23	149.64N	237.49E	==>	-227.97	1402223.10	3170534.02
4300.00	6.53	57.790	4283.59	155.70N	247.12E	==>	-237.21	1402229.17	3170543.65
4400.00	6.53	57.790	4382.94	161.76N	256.74E	==>	-246.45	1402235.23	3170553.27
4500.00	6.53	57.790	4482.29	167.83N	266.37E	==>	-255.69	1402241.30	3170562.89
4600.00	6.53	57.790	4581.64	173.89N	275.99E	==>	-264.93	1402247.36	3170572.52
4700.00	6.53	57.790	4680.99	179.96N	285.61E	==>	-274.17	1402253.42	3170582.14
4800.00	6.53	57.790	4780.34	186.02N	295.24E	==>	-283.41	1402259.49	3170591.77
4900.00	6.53	57.790	4879.69	192.09N	304.86E	==>	-292.65	1402265.55	3170601.39
5000.00	6.53	57.790	4979.04	198.15N	314.49E	==>	-301.89	1402271.62	3170611.02
5100.00	6.53	57.790	5078.39	204.21N	324.11E	==>	-311.13	1402277.68	3170620.64
5200.00	6.53	57.790	5177.74	210.28N	333.74E	==>	-320.37	1402283.74	3170630.27
5300.00	6.53	57.790	5277.09	216.34N	343.36E	==>	-329.60	1402289.81	3170639.89
5400.00	6.53	57.790	5376.44	222.41N	352.99E	==>	-338.84	1402295.87	3170649.51
5500.00	6.53	57.790	5475.80	228.47N	362.61E	==>	-348.08	1402301.94	3170659.14
5600.00	6.53	57.790	5575.15	234.54N	372.24E	==>	-357.32	1402308.00	3170668.76
5700.00	6.53	57.790	5674.50	240.60N	381.86E	==>	-366.56	1402314.06	3170678.39
5800.00	6.53	57.790	5773.85	246.66N	391.49E	==>	-375.80	1402320.13	3170688.01
5900.00	6.53	57.790	5873.20	252.73N	401.11E	==>	-385.04	1402326.19	3170697.64
6000.00	6.53	57.790	5972.55	258.79N	410.74E	==>	-394.28	1402332.26	3170707.26
6100.00	6.53	57.790	6071.90	264.86N	420.36E	==>	-403.52	1402338.32	3170716.89
6200.00	6.53	57.790	6171.25	270.92N	429.99E	==>	-412.76	1402344.38	3170726.51
6273.84	6.53	57.790	6244.61	275.40N	437.09E	==>	-419.58	1402348.86	3170733.62
6300.00	4.61	41.290	6270.65	276.98N	439.05E	9.50	-421.43	1402350.44	3170735.57
6400.00	7.28	297.350	6370.31	282.92N	436.06E	9.50	-418.09	1402356.39	3170732.59
6500.00	16.28	281.200	6468.13	288.57N	416.64E	9.50	-398.37	1402362.03	3170713.17
6600.00	25.64	276.530	6561.42	293.76N	381.32E	9.50	-362.79	1402367.22	3170677.85
6700.00	35.07	274.250	6647.61	298.36N	331.06E	9.50	-312.35	1402371.83	3170627.59
6800.00	44.53	272.850	6724.36	302.25N	267.25E	9.50	-248.42	1402375.71	3170563.78
6900.00	54.00	271.850	6789.54	305.30N	191.63E	9.50	-172.75	1402378.76	3170488.16
7000.00	63.47	271.070	6841.38	307.45N	106.27E	9.50	-87.42	1402380.91	3170402.81
7100.00	72.95	270.410	6878.46	308.62N	13.53E	9.50	5.22	1402382.09	3170310.07
7200.00	82.44	269.810	6899.74	308.80N	84.06W	9.50	102.64	1402382.26	3170212.48
7279.76	90.00	269.350	6905.00	308.22N	163.59W	9.50	181.99	1402381.68	3170132.96
7300.00	90.00	269.350	6905.00	307.99N	183.83W	==>	202.17	1402381.45	3170112.72
7400.00	90.00	269.350	6905.00	306.87N	283.82W	==>	301.92	1402380.33	3170012.73
7500.00	90.00	269.350	6905.00	305.74N	383.81W	==>	401.66	1402379.20	3169912.74
7600.00	90.00	269.350	6905.00	304.61N	483.81W	==>	501.40	1402378.07	3169812.75
7700.00	90.00	269.350	6905.00	303.49N	583.80W	==>	601.14	1402376.95	3169712.76
7800.00	90.00	269.350	6905.00	302.36N	683.79W	==>	700.88	1402375.82	3169612.77
7900.00	90.00	269.350	6905.00	301.23N	783.79W	==>	800.62	1402374.69	3169512.78
8000.00	90.00	269.350	6905.00	300.11N	883.78W	==>	900.36	1402373.57	3169412.79
8100.00	90.00	269.350	6905.00	298.98N	983.78W	==>	1000.10	1402372.44	3169312.80
8200.00	90.00	269.350	6905.00	297.85N	1083.77W	==>	1099.84	1402371.31	3169212.81
8300.00	90.00	269.350	6905.00	296.73N	1183.76W	==>	1199.59	1402370.19	3169112.83
8400.00	90.00	269.350	6905.00	295.60N	1283.76W	==>	1299.33	1402369.06	3169012.84
8500.00	90.00	269.350	6905.00	294.47N	1383.75W	==>	1399.07	1402367.93	3168912.85
8600.00	90.00	269.350	6905.00	293.35N	1483.74W	==>	1498.81	1402366.81	3168812.86
8700.00	90.00	269.350	6905.00	292.22N	1583.74W	==>	1598.55	1402365.68	3168712.87
8800.00	90.00	269.350	6905.00	291.09N	1683.73W	==>	1698.29	1402364.55	3168612.88
8900.00	90.00	269.350	6905.00	289.97N	1783.72W	==>	1798.03	1402363.43	3168512.89
9000.00	90.00	269.350	6905.00	288.84N	1883.72W	==>	1897.77	1402362.30	3168412.90

All data is in Feet unless otherwise stated
Coordinates are from Slot MD's are from Rig and TVD's are from Rig (Planned Datum #1 4791.0ft above Mean Sea Level)
Vertical Section is from 0.00N 0.00E on azimuth 273.480 degrees
Bottom hole distance is 4311.04 Feet on azimuth 273.48 degrees from Wellhead
Calculation method uses Minimum Curvature method
Prepared by Peterson Energy
Date Printed: 3-Jun-2013



INTEGRATED PETROLEUM TECHNOLOGIES, INC
SYSDRILL
Well Design Combined Report
Wellbore: RANCHO WATER VALLEY #7 REV 1 (PWB)

Interpolated Wellpath									
MD[ft]	Inc[deg]	Azi[deg]	TVD[ft]	North[ft]	East[ft]	Dogleg [deg/100ft]	Vertical Section[ft]	Northing	Easting
9100.00	90.00	269.350	6905.00	287.71N	1983.71W	==>	1997.51	1402361.17	3168312.91
9200.00	90.00	269.350	6905.00	286.58N	2083.71W	==>	2097.25	1402360.05	3168212.92
9300.00	90.00	269.350	6905.00	285.46N	2183.70W	==>	2197.00	1402358.92	3168112.93
9400.00	90.00	269.350	6905.00	284.33N	2283.69W	==>	2296.74	1402357.79	3168012.94
9500.00	90.00	269.350	6905.00	283.20N	2383.69W	==>	2396.48	1402356.67	3167912.95
9600.00	90.00	269.350	6905.00	282.08N	2483.68W	==>	2496.22	1402355.54	3167812.96
9700.00	90.00	269.350	6905.00	280.95N	2583.67W	==>	2595.96	1402354.41	3167712.97
9800.00	90.00	269.350	6905.00	279.82N	2683.67W	==>	2695.70	1402353.29	3167612.98
9900.00	90.00	269.350	6905.00	278.70N	2783.66W	==>	2795.44	1402352.16	3167512.99
10000.00	90.00	269.350	6905.00	277.57N	2883.65W	==>	2895.18	1402351.03	3167413.00
10100.00	90.00	269.350	6905.00	276.44N	2983.65W	==>	2994.92	1402349.91	3167313.01
10200.00	90.00	269.350	6905.00	275.32N	3083.64W	==>	3094.67	1402348.78	3167213.02
10300.00	90.00	269.350	6905.00	274.19N	3183.64W	==>	3194.41	1402347.65	3167113.03
10400.00	90.00	269.350	6905.00	273.06N	3283.63W	==>	3294.15	1402346.53	3167013.04
10500.00	90.00	269.350	6905.00	271.94N	3383.62W	==>	3393.89	1402345.40	3166913.05
10600.00	90.00	269.350	6905.00	270.81N	3483.62W	==>	3493.63	1402344.27	3166813.06
10700.00	90.00	269.350	6905.00	269.68N	3583.61W	==>	3593.37	1402343.15	3166713.07
10800.00	90.00	269.350	6905.00	268.56N	3683.60W	==>	3693.11	1402342.02	3166613.08
10900.00	90.00	269.350	6905.00	267.43N	3783.60W	==>	3792.85	1402340.89	3166513.09
11000.00	90.00	269.350	6905.00	266.30N	3883.59W	==>	3892.59	1402339.77	3166413.10
11100.00	90.00	269.350	6905.00	265.18N	3983.58W	==>	3992.33	1402338.64	3166313.11
11200.00	90.00	269.350	6905.00	264.05N	4083.58W	==>	4092.08	1402337.51	3166213.13
11300.00	90.00	269.350	6905.00	262.92N	4183.57W	==>	4191.82	1402336.39	3166113.14
11400.00	90.00	269.350	6905.00	261.80N	4283.57W	==>	4291.56	1402335.26	3166013.15
11419.53	90.00	269.350	6905.00	261.58N	4303.10W	==>	4311.04	1402335.04	3165993.62

All data is in Feet unless otherwise stated
Coordinates are from Slot MD's are from Rig and TVD's are from Rig (Planned Datum #1 4791.0ft above Mean Sea Level)
Vertical Section is from 0.00N 0.00E on azimuth 273.480 degrees
Bottom hole distance is 4311.04 Feet on azimuth 273.48 degrees from Wellhead
Calculation method uses Minimum Curvature method
Prepared by Peterson Energy
Date Printed: 3-Jun-2013



INTEGRATED PETROLEUM TECHNOLOGIES, INC
SYSDRILL
Well Design Combined Report
Wellbore: RANCHO WATER VALLEY #7 REV 1 (PWB)

Hole Sections								
Diameter	Start	Start	Start	Start	End	End	End	End
[in]	MD[ft]	TVD[ft]	North[ft]	East[ft]	MD[ft]	TVD[ft]	North[ft]	East[ft]
13 1/2	16.00	16.00	0.00N	0.00E	1220.00	1220.00	0.00N	0.00E
8 3/4	1220.00	1220.00	0.00N	0.00E	7280.00	6905.00	308.22N	163.83W
6 1/8	7280.00	6905.00	308.22N	163.83W	11419.53	6905.00	261.58N	4303.10W

Casings								
Name	Top	Top	Top	Top	Shoe	Shoe	Shoe	Shoe
	MD[ft]	TVD[ft]	North[ft]	East[ft]	MD[ft]	TVD[ft]	North[ft]	East[ft]
9 5/8in Surface Casing	0.00				1220.00	1220.00	0.00N	0.00E
7.0in Intermediate Casing	0.00				7280.00	6905.00	308.22N	163.83W
4 1/2in Production Liner	6300.00	6270.65	276.98N	439.05E	11419.53	6905.00	261.58N	4303.10W

Targets								
Name	North[ft]	East[ft]	TVD[ft]	Latitude	Longitude	Northing	Easting	Last Revised
RWV #7-1	308.22N	163.59W	6905.00	N40 26 10.7880	W104 53 19.6800	1402381.68	3170132.96	8-Mar-2013
RWV #7-2	261.58N	4303.10W	6905.00	N40 26 10.6056	W104 54 13.2163	1402335.04	3165993.62	8-Mar-2013

Survey Tool Program					
Reference	Survey Name	MD[ft]	TVD[ft]	Survey Tool	Error Model
37980	Planned	11419.53	6905.00	WdW Rate Gyro	Standard

Notes

All data is in Feet unless otherwise stated
Coordinates are from Slot MD's are from Rig and TVD's are from Rig (Planned Datum #1 4791.0ft above Mean Sea Level)
Vertical Section is from 0.00N 0.00E on azimuth 273.480 degrees
Bottom hole distance is 4311.04 Feet on azimuth 273.48 degrees from Wellhead
Calculation method uses Minimum Curvature method
Prepared by Peterson Energy
Date Printed: 3-Jun-2013



SYSDRILL
Closest Approach + Clearance Factor Summary Report
Wellbore: RANCHO WATER VALLEY #7 REV 1

Ellipse separations are reported ONLY if BOTH wells have uncertainty data
Only Depth and Magnetic Reference Field error terms are correlated across tie points
Cutoff is calculated on CENTRE to CENTRE distance

Summary data uses Closest Approach clearance calculation for all minima
Hole size/Casings ARE included
Hole size/Casings are NOT subtracted from Centre-Centre distance
Confidence limit of 95.00% / 2.80 SD.

Wellbore		
Name	Created	Last Revised
RANCHO WATER VALLEY #7 REV 1	3-Jun-2013	4-Jun-2013

Well		
Name	Government ID	Last Revised
RANCHO WATER VALLEY #7		16-May-2013

Slot						
Name	Grid Northing	Grid Easting	Latitude	Longitude	North	East
Slot #07	1402073.4734	3170296.5403	N40 26 7.7312	W104 53 17.5920	0.00N	47.32W

Installation				
Name	Easting	Northing	Coord System Name	North Alignment
Rancho Water Valley	3170343.8622	1402073.4733	CO83-NF on NORTH AMERICAN DATUM 1983 datum	Grid

Field				
Name	Easting	Northing	Coord System Name	North Alignment
Windsor Project	3162710.0707	1407271.6545	CO83-NF on NORTH AMERICAN DATUM 1983 datum	Grid

Clearance Summary										
Offset WellName	Offset Wellbore	Offset Slot	Offset Structure	Separation [ft]	MD[ft]	Diverging From[ft]	Ellipse Separation [ft]	Ellipse MD[ft]	Clearance Factor	Clearance MD[ft]
RANCHO WATER VALLEY #6	RANCHO WATER VALLEY #6 REV 1	Slot #06	Rancho Water Valley	8.90	1856.74	5970.72	5.28	1856.74	2.46	1856.74
RANCHO WATER VALLEY #8	RANCHO WATER VALLEY #8	Slot #08	Rancho Water Valley	16.70	1616.00	6748.16	13.47	1623.61	5.14	1640.02
RANCHO WATER VALLEY #5	RANCHO WATER VALLEY #5	Slot #05	Rancho Water Valley	21.99	1875.07	11419.53	18.51	1875.07	5.48	11419.53
RANCHO WATER VALLEY #9	RANCHO WATER VALLEY #9	Slot #09	Rancho Water Valley	33.41	1616.00	6960.45	30.21	1623.61	4.26	6951.09
RANCHO WATER VALLEY #2-6-4	RANCHO WATER VALLEY #2-6-4 (AWB)	Slot #03	Rancho Water Valley	39.71	716.77	8738.52	36.52	721.38	11.94	787.00
RANCHO WATER VALLEY #4	RANCHO WATER VALLEY #4	Slot #04	Rancho Water Valley	46.56	1903.76	11419.53	43.03	1903.76	2.46	11419.53
RANCHO WATER VALLEY #10	RANCHO WATER VALLEY #10	Slot #10	Rancho Water Valley	47.32	1616.00	11419.53	44.09	1623.61	5.71	11419.53
RANCHO WATER VALLEY #11	RANCHO WATER VALLEY 11 #7-7-33-270-6 -CH (AWB)	Slot #11	Rancho Water Valley	64.03	16.00	11196.71	62.75	180.04	3.21	11419.53

All data is in Feet unless otherwise stated
Coordinates are from Slot MD's are from Rig and TVD's are from Rig (Planned Datum #1 4791.0ft above Mean Sea Level)
Vertical Section is from 0.00N 0.00E on azimuth 273.480 degrees
Prepared by Peterson Energy
Date Printed: 4-Jun-2013



SYSDRILL
Closest Approach + Clearance Factor Summary Report
Wellbore: RANCHO WATER VALLEY #7 REV 1

Clearance Summary										
Offset WellName	Offset Wellbore	Offset Slot	Offset Structure	Separation [ft]	MD[ft]	Diverging From[ft]	Ellipse Separation [ft]	Ellipse MD[ft]	Clearance Factor	Clearance MD[ft]
RANCHO WATER VALLEY #2-8-4	RANCHO WATER VALLEY 2-8-4 (AWB)	Slot #02	Rancho Water Valley	71.15	1478.43	7496.94	67.54	1516.00	18.00	1640.02
RANCHO WATER VALLEY #12	RANCHO WATER VALLEY #12	Slot #12	Rancho Water Valley	80.36	1623.61	11419.53	77.14	1623.61	3.62	11419.53
RANCHO WATER VALLEY #13	RANCHO WATER VALLEY #13 (AWB)	Slot #13	Rancho Water Valley	91.55	429.99	11105.24	89.45	429.99	6.42	11419.53
RANCHO WATER VALLEY #3-9-4	RANCHO WATER VALLEY #3-9-4 (AWB)	Slot #01	Rancho Water Valley	97.50	17.00	6947.59	96.24	516.00	33.94	836.21
CENTER POINT #7	CENTER POINT #7	Slot #7	Center Point	552.01	11419.53	11419.53	487.20	11419.53	8.52	11419.53
FRYE FARMS #1	FRYE FARMS #1	Slot #1	Frye Farms	804.70	11419.53	11419.53	776.77	11419.53	28.82	11419.53
CENTER POINT #5	CENTER POINT #5	Slot #5	Center Point	828.48	11419.53	11419.53	763.42	11419.53	12.73	11419.53
Pavistma South 5 #1-8-32-09 0-4-NH	Pavistma South 5 #1-8-32-090-4 -NH (PWB)	Slot #5	Pavistma South	1000.88	11419.53	11419.53	980.09	11419.53	48.13	11419.53
FRYE FARMS #5	FRYE FARMS #5	Slot #5	Frye Farms	1054.84	11419.53	11419.53	1018.82	11419.53	29.28	11419.53
FRYE FARMS #6	FRYE FARMS #6	Slot #6	Frye Farms	1068.73	11419.53	11419.53	1010.26	7512.03	18.03	7512.03
Pavistma South 4 #1-7-32-09 0-4-CH	Pavistma South 4 #1-7-32-090-4 -CH (PWB)	Slot #4	Pavistma South	1127.72	11419.53	11419.53	1101.21	11419.53	42.55	11419.53
FRYE FARMS #7	FRYE FARMS #7	Slot #7	Frye Farms	1397.04	11419.53	11419.53	1338.59	7584.16	23.57	7584.16
Pavistma South 3 #1-6-32-09 0-4-NH	Pavistma South 3 #1-6-32-090-4 -NH (PWB)	Slot #3	Pavistma South	1560.85	11419.53	11419.53	1511.40	11419.53	31.56	11419.53
PAVISTMA #4	PAVISTMA #4	Slot #4	Pavistma	1609.24	11419.53	11419.53	1561.69	11419.53	33.84	11419.53
FRYE FARMS #8	FRYE FARMS #8	Slot #8	Frye Farms	1725.96	11419.53	11419.53	1667.54	7656.28	29.15	7656.28
FRYE FARMS #9-7-32	FRYE FARMS #9-7-32 (AWB)	FRYE FARMS #9-7-32	Frye Farms	1848.10	11419.53	11419.53	1810.61	11419.53	49.29	11419.53
FRYE FARMS #13	FRYE FARMS #13	Slot #13	Frye Farms	1892.34	11419.53	11419.53	1832.77	7693.17	31.76	7692.35
PAVISTMA #5	PAVISTMA #5	Slot #5	Pavistma	2050.75	11419.53	11419.53	1992.85	11419.53	35.42	11419.53
Pavistma South 2 #1-5-32-09	Pavistma South 2 #1-5-32-090-4	Slot #2	Pavistma South	2053.78	11419.53	11419.53	1992.77	11419.53	33.67	11419.53

All data is in Feet unless otherwise stated
Coordinates are from Slot MD's are from Rig and TVD's are from Rig (Planned Datum #1 4791.0ft above Mean Sea Level)
Vertical Section is from 0.00N 0.00E on azimuth 273.480 degrees
Prepared by Peterson Energy
Date Printed: 4-Jun-2013



SYSDRILL
Closest Approach + Clearance Factor Summary Report
Wellbore: RANCHO WATER VALLEY #7 REV 1

Clearance Summary										
Offset WellName	Offset Wellbore	Offset Slot	Offset Structure	Separation [ft]	MD[ft]	Diverging From[ft]	Ellipse Separation [ft]	Ellipse MD[ft]	Clearance Factor	Clearance MD[ft]
0-4-CH	-CH (PWB)									
FRYE FARMS #9	FRYE FARMS #9	Slot #9	Frye Farms	2055.33	11419.53	11419.53	1996.95	7728.41	34.73	7728.41
Pavistma South 1 #1-5-32-09 0-4-NH	Pavistma South 1 #1-5-32-090-4 -NH (PWB)	Slot #1	Pavistma South	2227.79	11419.53	11419.53	2164.29	11419.53	35.08	11419.53
FRYE FARMS #10	FRYE FARMS #10	Slot #10	Frye Farms	2384.89	11419.53	11419.53	2326.51	7800.54	40.31	7800.54
PAVISTMA #7	PAVISTMA #7	Slot #7	Pavistma	2604.24	7840.80	7840.80	2510.86	7857.21	27.86	7873.61
FRYE FARMS #11	FRYE FARMS #11	Slot #11	Frye Farms	2766.88	7840.80	7840.80	2707.59	7840.80	46.64	7857.21
PAVISTMA #6	PAVISTMA #6	Slot #6	Pavistma	2828.78	11419.53	11419.53	2761.96	11419.53	42.34	11419.53
FRYE FARMS #12	FRYE FARMS #12	Slot #12	Frye Farms	3096.68	7834.71	7834.71	3037.24	7840.80	52.07	7857.21
FRYE FARMS #9-5-32	FRYE FARMS #9-5-32 (AWB)	FRYE FARMS #9-5-32	Frye Farms	3158.25	11419.53	11419.53	3117.28	11419.53	77.09	11419.53
PAVISTMA #8	PAVISTMA #8	Slot #8	Pavistma	3201.89	11419.53	11419.53	3131.50	11419.53	45.49	11419.53
PAVISTMA #10	PAVISTMA #10	Slot #10	Pavistma	3264.41	7833.54	7833.54	3170.99	7840.80	34.92	7857.21
HILLSIDE #17	HILLSIDE #17	Slot #17	Hillside	3427.21	7832.57	7832.57	3357.42	7857.21	49.05	7857.21
PAVISTMA #9	PAVISTMA #9	Slot #9	Pavistma	3496.03	11419.53	11419.53	3423.02	11419.53	47.88	11419.53
FRYE FARM 7-5-32	FRYE FARM 7-5-32 (AWB)	FRYE FARMS #7-5-32	Frye Farms	3568.11	11419.53	11419.53	3536.81	11419.53	114.00	11419.53
HILLSIDE #18	HILLSIDE #18	Slot #18	Hillside	3755.07	7831.13	7831.13	3685.45	7857.21	53.87	7857.21
PAVISTMA #11	PAVISTMA #11	Slot #11	Pavistma	3796.11	11419.53	11419.53	3721.01	11419.53	50.55	11419.53
HILLSIDE #15	HILLSIDE #15	Slot #15	Hillside	3927.87	7827.61	7827.61	3858.26	7857.21	56.34	7857.21
HILLSIDE #14	HILLSIDE #14	Slot #14	Hillside	4086.57	7826.89	7826.89	4016.88	7857.21	58.55	7857.21
PAVISTMA #12	PAVISTMA #12	Slot #12	Pavistma	4100.82	11419.53	11419.53	4023.96	11419.53	53.35	11419.53
RAINDANCE #6	RAINDANCE #6	Slot #6	Raindance	4233.04	11419.53	11419.53	4031.71	11419.53	21.03	11419.53
RAINDANCE #5	RAINDANCE #5	Slot #5	Raindance	4382.51	11419.53	11419.53	4178.66	11419.53	21.50	11419.53
CENTER POINT #2	CENTER POINT #2	Slot #2	Center Point	4417.25	7825.33	7825.33	4375.76	7857.21	94.81	11419.53
PAVISTMA 11-32	PAVISTMA 11-32 (AWB)	PAVISTMA 11-32	Pavistma (Anadarko)	4535.13	11419.53	11419.53	4493.68	11419.53	109.41	11419.53

All data is in Feet unless otherwise stated
Coordinates are from Slot MD's are from Rig and TVD's are from Rig (Planned Datum #1 4791.0ft above Mean Sea Level)
Vertical Section is from 0.00N 0.00E on azimuth 273.480 degrees
Prepared by Peterson Energy
Date Printed: 4-Jun-2013



SYSDRILL
Closest Approach + Clearance Factor Summary Report
Wellbore: RANCHO WATER VALLEY #7 REV 1

Clearance Summary										
Offset WellName	Offset Wellbore	Offset Slot	Offset Structure	Separation [ft]	MD[ft]	Diverging From[ft]	Ellipse Separation [ft]	Ellipse MD[ft]	Clearance Factor	Clearance MD[ft]
CENTER POINT #1	CENTER POINT #1	Slot #1	Center Point	4587.85	7824.40	7824.40	4546.15	7857.21	98.50	11419.53
RAINDANCE CE #4	RAINDANCE #4	Slot #4	Raindance	4691.21	11419.53	11419.53	4482.91	11419.53	22.52	11419.53
CENTER POINT #3	CENTER POINT #3	Slot #3	Center Point	4747.10	7824.40	7824.40	4705.69	7857.21	102.54	11419.53
RAINDANCE CE #3	RAINDANCE #3	Slot #3	Raindance	4852.62	11419.53	11419.53	4642.57	11419.53	23.10	11419.53
PAVISTMA 19-32	PAVISTMA 19-32 (AWB)	PAVISTMA 19-32	Pavistma (Anadarko)	4943.40	11419.53	11419.53	4917.39	11419.53	190.04	11419.53
CENTER POINT #4	CENTER POINT #4	Slot #4	Center Point	4987.00	7824.40	7824.40	4945.44	7857.21	108.21	11419.53
RAINDANCE CE #2	RAINDANCE #2	Slot #2	Raindance	5002.04	11419.53	11419.53	4790.26	11419.53	23.62	11419.53
CENTER POINT #6	CENTER POINT #6	Slot #6	Center Point	5097.85	7824.40	7824.40	5056.51	7840.80	110.54	11419.53
CENTER POINT #8	CENTER POINT #8	Slot #8	Center Point	5166.91	7824.40	7824.40	5125.35	7857.21	112.21	11419.53
HILLSIDE #11	HILLSIDE #11	Slot #11	Hillside	5190.27	11419.53	11419.53	5102.07	11419.53	58.84	11419.53
RAINDANCE CE #9	RAINDANCE #9	Slot #9	Raindance	5263.63	11419.53	11419.53	5183.48	11419.53	65.68	11419.53
Poudre #36-28	Poudre #36-28 (AWB)	Poudre #36-28	Poudre (Kerr-McGee Oil & Gas)	5320.85	9891.33	9891.33	5278.99	9956.94	95.14	11419.53
Lind #13-32	Lind #13-32 (AWB)	Lind #13-32	Lind (Anadarko)	5329.19	11419.53	11419.53	5288.23	11419.53	130.12	11419.53
HILLSIDE #10	HILLSIDE #10	Slot #10	Hillside	5364.17	11419.53	11419.53	5279.06	11419.53	63.03	11419.53
HILLSIDE #9	HILLSIDE #9	Slot #9	Hillside	5402.46	11419.53	11419.53	5327.41	11419.53	71.98	11419.53
RAINDANCE CE #8	RAINDANCE #8	Slot #8	Raindance	5425.65	11419.53	11419.53	5345.00	11419.53	67.27	11419.53
PAVISTMA 5-3-32	PAVISTMA 5-3-32 (AWB)	PAVISTMA 5-3-32	Pavistma	5429.10	11419.53	11419.53	5386.85	11419.53	128.50	11419.53
RAINDANCE CE #7	RAINDANCE #7	Slot #7	Raindance	5474.96	11419.53	11419.53	5394.24	11419.53	67.83	11419.53
HILLSIDE #7	HILLSIDE #7	Slot #7	Hillside	5490.45	11419.53	11419.53	5441.05	11419.53	111.14	11419.53
HILLSIDE #8	HILLSIDE #8	Slot #8	Hillside	5556.93	11419.53	11419.53	5490.02	11419.53	83.05	11419.53
HILLSIDE #5	HILLSIDE #5	Slot #5	Hillside	5698.59	11419.53	11419.53	5639.61	11419.53	96.61	11419.53
PAVISTMA 12-32	PAVISTMA 12-32 (AWB)	PAVISTMA 12-32	Pavistma (Anadarko)	5771.94	11419.53	11419.53	5752.01	11419.53	289.66	11419.53
HILLSIDE #6	HILLSIDE #6	Slot #6	Hillside	5831.42	11419.53	11419.53	5781.05	11419.53	115.76	11419.53
Poudre #14-28	Poudre #14-28 (AWB)	Poudre #14-28	Poudre (Kerr-McGee Oil & Gas)	5848.33	10580.30	10580.30	5810.00	10629.52	131.90	11419.53

All data is in Feet unless otherwise stated
Coordinates are from Slot MD's are from Rig and TVD's are from Rig (Planned Datum #1 4791.0ft above Mean Sea Level)
Vertical Section is from 0.00N 0.00E on azimuth 273.480 degrees
Prepared by Peterson Energy
Date Printed: 4-Jun-2013



SYSDRILL
Closest Approach + Clearance Factor Summary Report
Wellbore: RANCHO WATER VALLEY #7 REV 1

Clearance Summary										
Offset WellName	Offset Wellbore	Offset Slot	Offset Structure	Separation [ft]	MD[ft]	Diverging From[ft]	Ellipse Separation [ft]	Ellipse MD[ft]	Clearance Factor	Clearance MD[ft]
W Great Western #27-14	W Great Western #27-14 (AWB)	Great Western #27-14	Great Western (Great Western Oil & Gas)	5849.20	6971.38	6971.38	5842.79	6971.38	227.86	11419.53
HILLSIDE #3	HILLSIDE #3	Slot #3	Hillside	5875.93	11419.53	11419.53	5829.80	11419.53	127.38	11419.53
Poudre #15-28	Poudre #15-28 (AWB)	Poudre #15-28	Poudre (Kerr-McGee Oil & Gas)	5912.57	9325.50	9325.50	5864.09	9382.80	95.23	11419.53
Anderson #1	Anderson #1 (AWB)	Anderson #1	Anderson (J.K. Wadley)	5944.72	11419.53	11419.53	5934.45	11419.53	578.91	11419.53
HILLSIDE #2	HILLSIDE #2	Slot #2	Hillside	6102.09	11419.53	11419.53	6066.00	11419.53	169.11	11419.53
HILLSIDE #4	HILLSIDE #4	Slot #4	Hillside	6156.01	11419.53	11419.53	6120.36	11419.53	172.72	11419.53
PAVISTMA 4-2-32	PAVISTMA 4-2-32 (AWB)	PAVISTMA 4-2-32	Pavistma	6246.08	11419.53	11419.53	6197.47	11419.53	128.48	11419.53
HILLSIDE 2-4-32	HILLSIDE 2-4-32 (PWB)	HILLSIDE 2-4-32	Hillside	6309.01	11419.53	11419.53	6254.80	11419.53	116.38	11419.53
W Great Western # 27-53	W Great Western # 27-53 (AWB)	Great Western # 27-53	Great Western (Great Western Oil & Gas)	6517.53	2788.31	6643.30	6514.47	2821.12	257.77	11419.53
Poudre #23-28	Poudre #23-28 (AWB)	Poudre #23-28	Poudre (Kerr-McGee Oil & Gas)	6575.87	10016.00	10016.00	6537.81	10071.77	139.26	11419.53
PAVISTMA 5-1-32	PAVISTMA 5-1-32 (AWB)	PAVISTMA 5-1-32	Pavistma	6577.24	11419.53	11419.53	6552.30	11419.53	263.66	11419.53
W Great Western #27-23	W Great Western #27-23 (AWB)	Great Western #27-23	Great Western (Great Western Oil & Gas)	6592.95	624.98	624.98	6591.49	624.98	283.23	11419.53
Poudre #19-28	Poudre #19-28 (AWB)	Poudre #19-28	Poudre (Kerr-McGee Oil & Gas)	6594.36	11221.36	11221.36	6536.33	11285.69	110.53	11419.53
Great Western 27-13	W #12 Great Western 27-13 (AWB)	Great Western #27-13	Great Western (Great Western Oil & Gas)	6598.02	2379.08	6928.42	6595.39	2394.61	247.38	11419.53
Poudre #10-28	Poudre #10-28 (AWB)	Poudre #10-28	Poudre (Kerr-McGee Oil & Gas)	7207.62	9317.18	9317.18	7156.86	9366.39	121.34	11419.53
Poudre #11-28	Poudre #11-28 (AWB)	Poudre #11-28	Poudre (Kerr-McGee Oil & Gas)	7236.67	10580.30	10580.30	7193.58	10645.92	142.44	11419.53
Poudre #25-28	Poudre #25-28 (AWB)	Poudre #25-28	Poudre (Kerr-McGee Oil & Gas)	7318.10	156.00	10006.16	7316.80	163.64	143.51	11419.53
RAINDANCE 1 #1-1-32	RAINDANCE 1 #1-1-32 (PWB)	Slot #1	Raindance	8181.54	11419.53	11419.53	8151.24	11419.53	270.00	11419.53

All data is in Feet unless otherwise stated
Coordinates are from Slot MD's are from Rig and TVD's are from Rig (Planned Datum #1 4791.0ft above Mean Sea Level)
Vertical Section is from 0.00N 0.00E on azimuth 273.480 degrees
Prepared by Peterson Energy
Date Printed: 4-Jun-2013