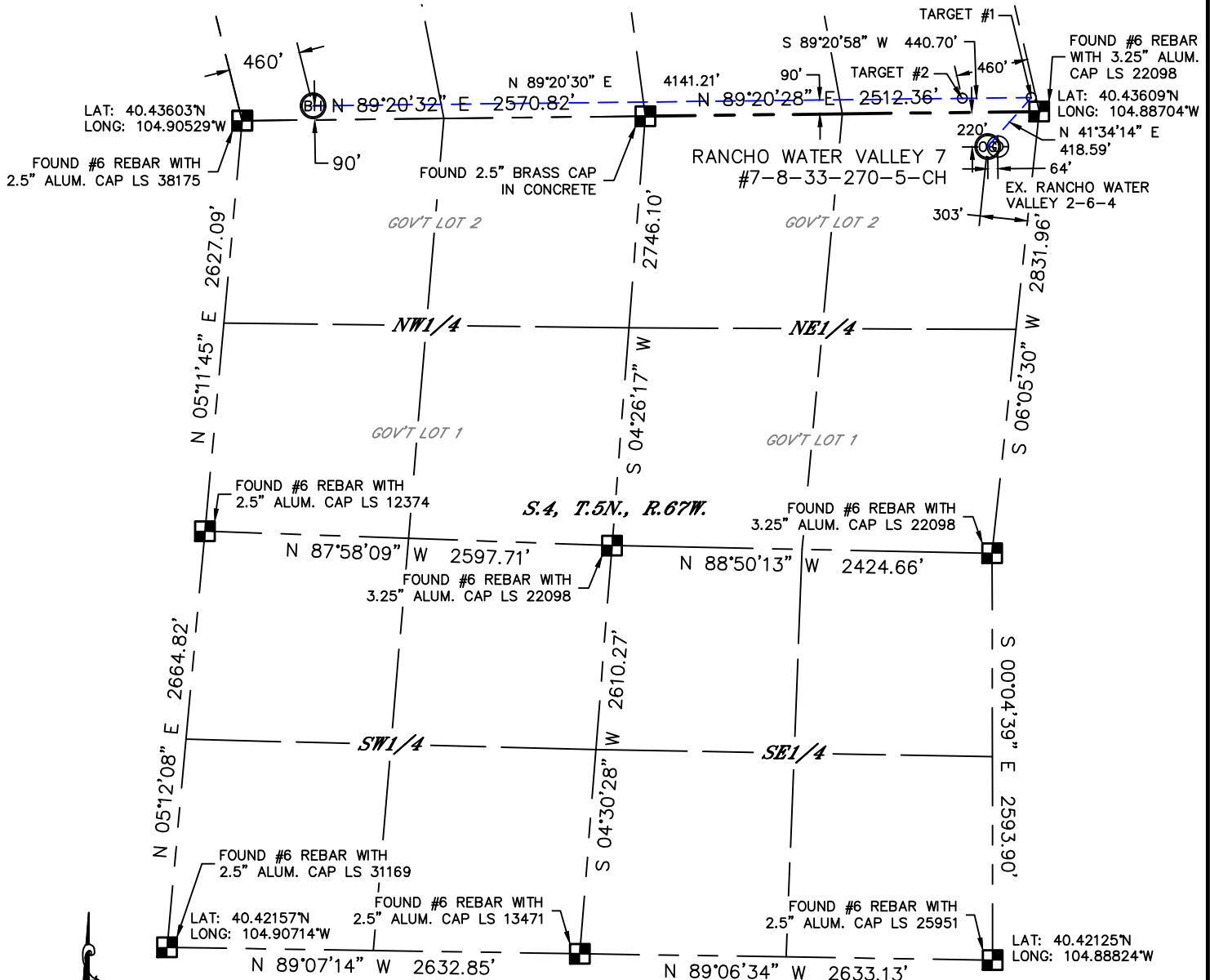


WELL LOCATION CERTIFICATE

THIS MAP DOES NOT REPRESENT A BOUNDARY SURVEY

SECTION: 4
TOWNSHIP: 5N
RANGE: 67W



In accordance with a request from Michael Cuba with TEKTON ENERGY, LLC Lat40', Inc. has determined the surface location of the RANCHO WATER VALLEY 7 #7-8-33-270-5-CH to be 220' from the NORTH line and 303' from the EAST line as measured at right angles from the section lines of Section 4, Township 5 North, Range 67 West and the bottom hole to be 90' from the SOUTH line and 460' from the WEST line as measured at right angles from the section lines of Section 33, Township 6 North, Range 67 West of the Sixth Principal Meridian, County of Weld, State of Colorado.

I hereby state that this Well Location Certificate was prepared by me, or under my direct supervision, that the fieldwork was completed on 9/26/2012, for and on behalf of TEKTON ENERGY, LLC. That this is not a Land Survey Plat or an Improvement Survey Plat, and that it is not to be relied upon for establishment of fence, building, or other future improvement lines.

NOTE:

- 1) Bearings shown are Grid Bearings of the Colorado State Plane Coordinate System, North Zone, North American Datum 1983/2007. The lineal dimensions as contained herein are based upon the "U.S. Survey Foot."
- 2) Ground elevations are based on an observed GPS elevation (NAVD 1988 DATUM).
- 3) IMPROVEMENTS: See LOCATION DRAWING for all visible improvements within 400' of disturbed area.
- 4) SURFACE USE: EX. WELL PAD / RANGELAND
- 5) INSTRUMENT OPERATOR: WYATT HALL

SURFACE LOCATION

LAT: 40.43548°N
LONG: 104.88822°W
PDOP: 2.1
ELEV: 4775'
1/4,1/4: NE1/4NE1/4
NEAREST PROPERTY LINE: 220' N

BOTTOM HOLE

LAT: 40.43628°N
LONG: 104.90367°W

TARGET #1
LAT: 40.43634°N
LONG: 104.88722°W

TARGET #2
LAT: 40.43633°N
LONG: 104.88880°W

SHEET 1 OF 2

Brian T. Brinkman—Owner, MAILAND, Inc.
Colorado Licensed Professional Surveyor No. 38175
DATE: rev 5/31/2013
PROJECT#: 2011315

DATE: rev 5/31/2013
PROJECT#: 2011315

NOTE

NOTE According to Colorado law, you must commence any legal action based upon any defect in this W.L.C. within three years after you discover such defect. In no event, may any action based upon any defect in this survey be commenced more than ten years after the date of the certificate shown hereon. (13-80-105 C.R.S.)

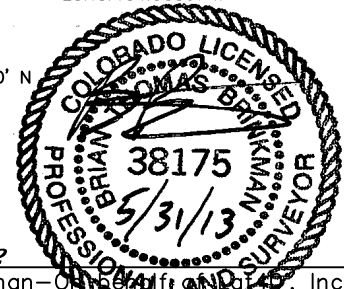


LEGEND

= ALIQUOT MONUMENT AS DESCRIBED



= CALCULATED POSITION



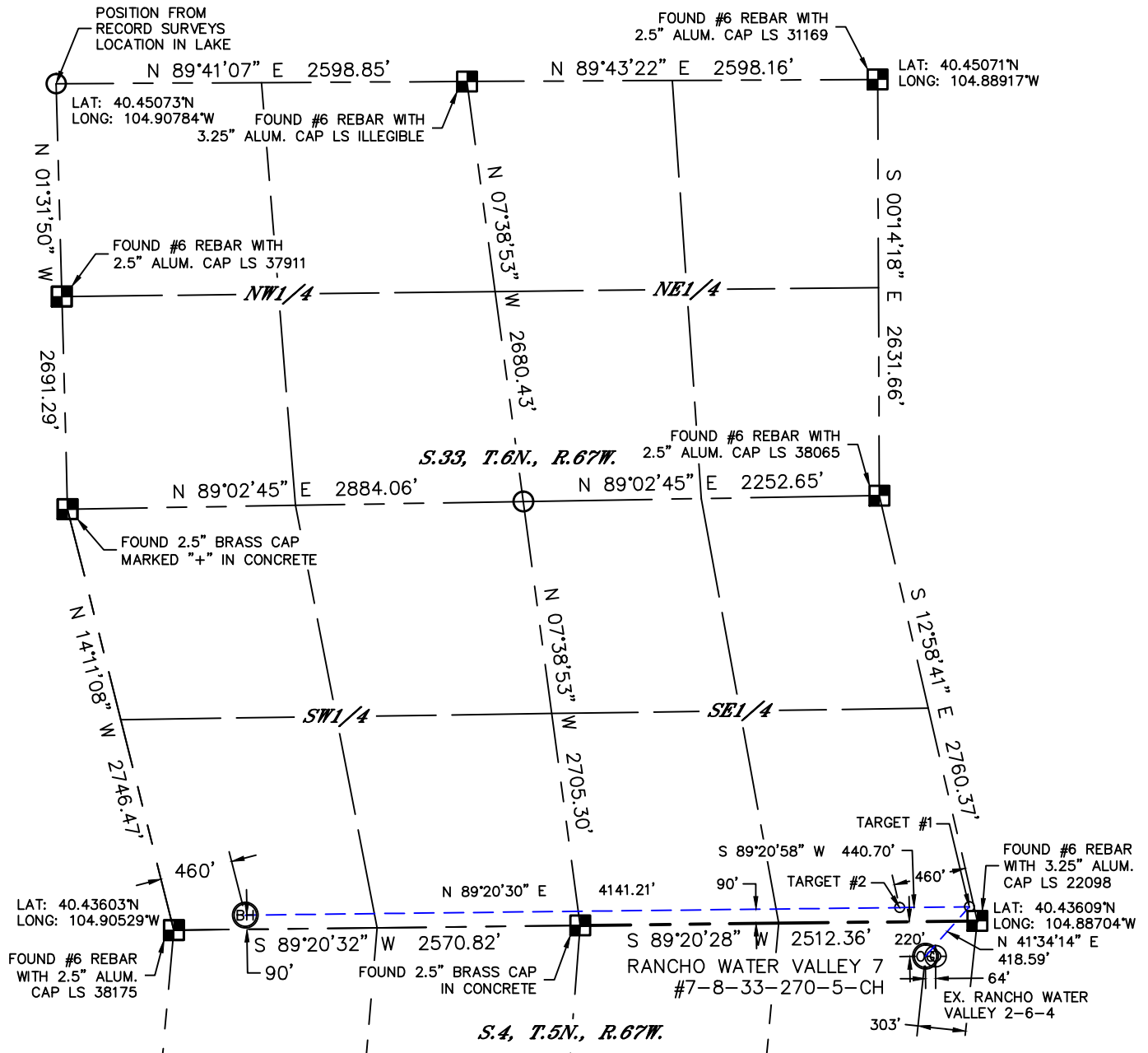


Lat40°, Inc. 1635 Foxtrail Drive, Suite 325 Loveland, CO 970-776-3321

WELL LOCATION CERTIFICATE

THIS MAP DOES NOT REPRESENT A BOUNDARY SURVEY

SECTION: 4
TOWNSHIP: 5N
RANGE: 67W

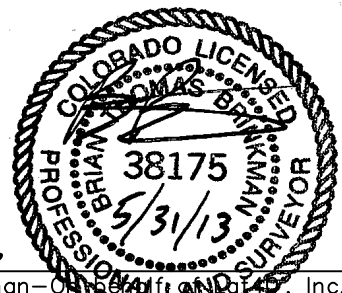


NOTE
According to Colorado law, you must commence any legal action based upon any defect in this W.L.C. within three years after you discover such defect. In no event, may any action based upon any defect in this survey be commenced more than ten years after the date of the certificate shown hereon. (13-80-105 C.R.S.)

LEGEND
[Symbol] = ALIQUOT MONUMENT AS DESCRIBED
[Symbol] = CALCULATED POSITION

SHEET 2 OF 2

Brian T. Brinkman—Owner, Lat40°, Inc.
Colorado Licensed Professional Land Surveyor No. 38175
DATE: rev 5/31/2013
PROJECT#: 2011315



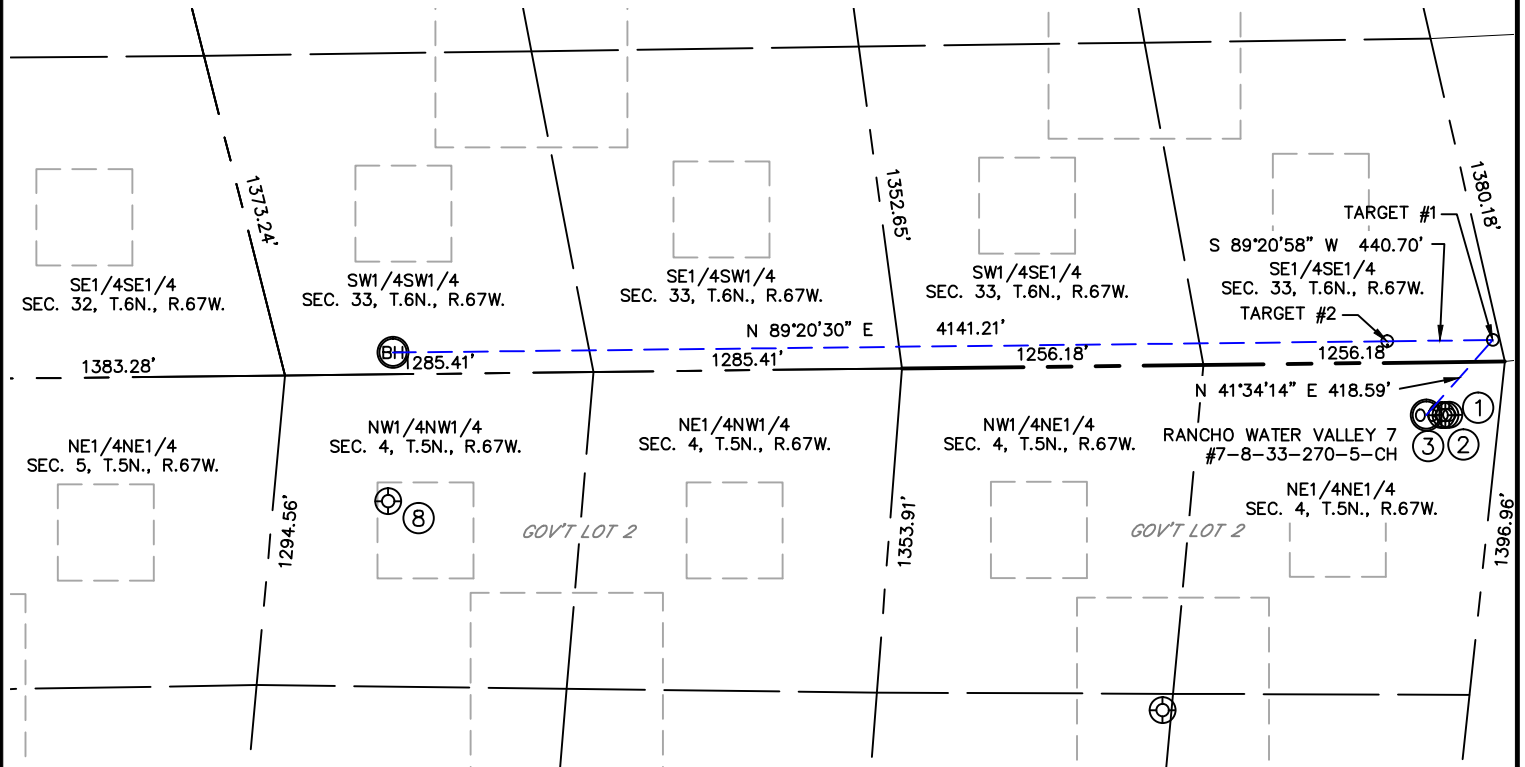


Lat40°, Inc. 1635 Foxtrail Drive, Suite 325 Loveland, CO 970-776-3321

SITE SKETCH

RANCHO WATER VALLEY 7
#7-8-33-270-5-CH

SECTION: 4
TOWNSHIP: 5N
RANGE: 67W



①

RANCHO WATER VALLEY
3-9-4
NE1/4NE1/4
220' FNL
207' FEL
LAT-40.43549°N
LONG-104.88787°W
PDOP: 1.0
ELEV: 4774'

②

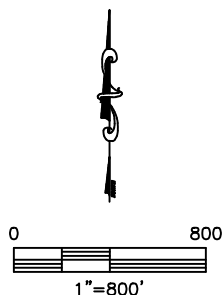
RANCHO WATER VALLEY
2-8-4
NE1/4NE1/4
220' FNL
223' FEL
LAT-40.43548°N
LONG-104.88793°W
PDOP: 1.0
ELEV: 4775'

③

RANCHO WATER VALLEY
2-6-4
NE1/4NE1/4
220' FNL
239' FEL
LAT-40.43548°N
LONG-104.88799°W
PDOP: 1.0
ELEV: 4775'

⑧

PAVISTMA 4-23
NW1/4NW1/4
528' FNL
475' FWL
LAT-40.43007°N
LONG-104.90434°W
PDOP: 4.0
ELEV: 4868'



DATE: rev 5/31/2013
PROJECT#: 2011315