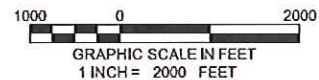
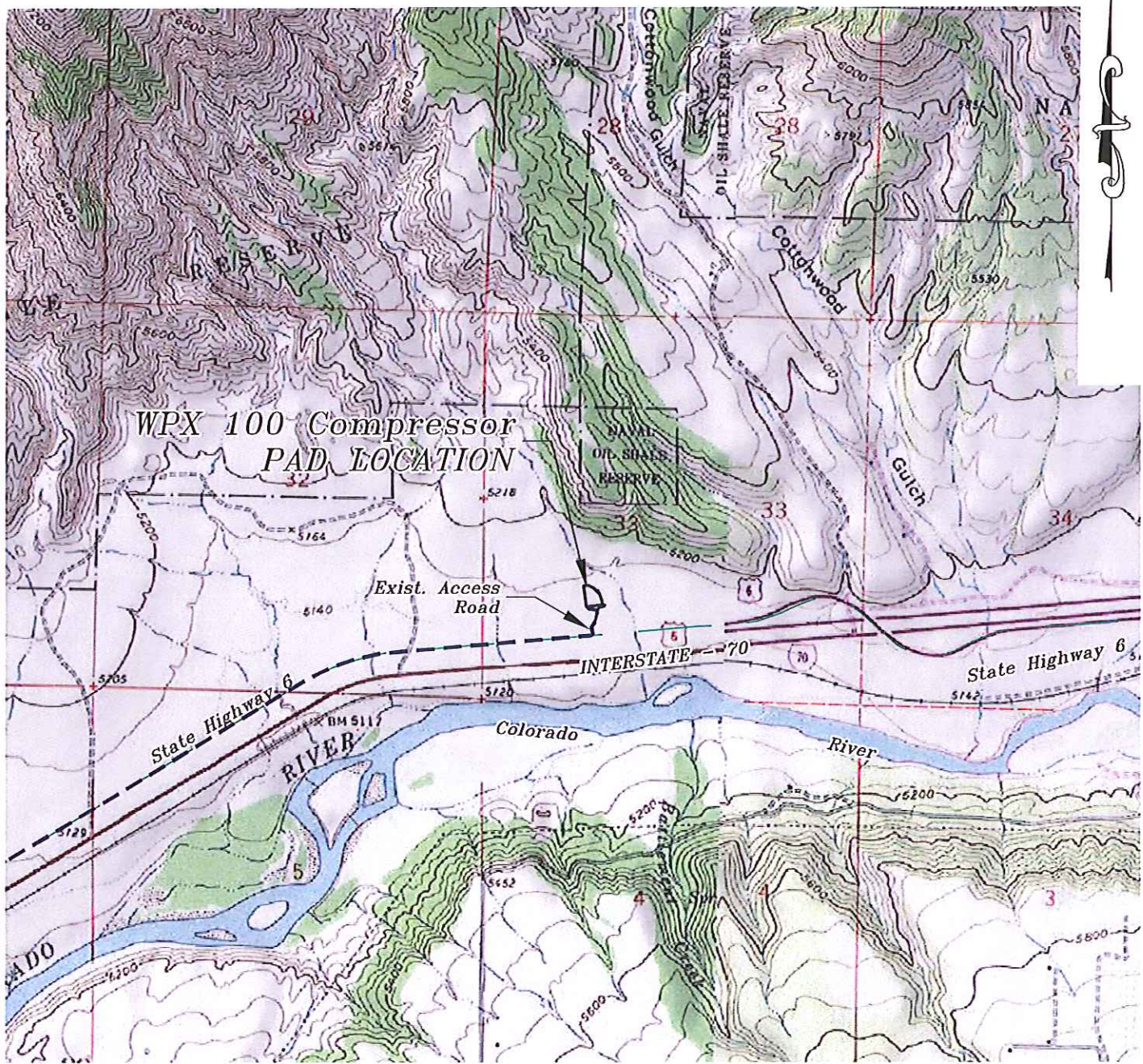


Section 33
T. 6 S., R 95 W



ACCESS DESCRIPTION:
FROM THE INTERSECTION OF COUNTY ROAD 215 AND STATE HIGHWAY 6 AT PARACHUTE, PROCEED IN A NORTHEASTERLY DIRECTION ON STATE HIGHWAY 6, ± 2.7 MILES TO AN INTERSECTION WITH A DIRT/GRAVEL ROAD, PROCEED LEFT IN A NORTHERLY DIRECTION ± 0.1 MILES TO WPX 100 COMPRESSOR SITE, AS SHOWN HEREON.

REVISED: 5/2/13

136 East Third Street
Rifle, Colorado 81650
Ph. (970) 625-2720
Fax (970) 625-2773



BOOKCLIFF
Survey Services, Inc.

SCALE: 1" = 2000'
DATE: 1/17/12
PLAT: 3 of 4
PROJECT: Williams Valley
DFT: cws

Construction Plan Prepared for:
WPXENERGY WPX Energy Rocky Mountain, LLC

WPX 100 Compressor Pad - Plat 3
ACCESS ROAD MAP