

Well Location Plat BAT 34A-24-07-96

Section 24, Township 7 South, Range 96 West

Northwest Corner Sec. 24
2" Alum. Cap L.S. #17492
2006

N 88°58'10" W

5411.26'

Northeast Corner Sec. 24
3" Brass Cap L.S. #11643
1982

Note: Improvements Exist Within 400' of
Well Site. See Sheet 3.

Current Surface Land Use :
Open Range Land



Graphic Scale in Feet
1"=1000'

Bottom Hole:
BAT 34A-24-07-96

1377' FSL

1973' FEL

NAD83

Lat: 39.419492786°N
Long: 108.055690593°W

NAD27

Lat: 39.419514601°N
Long: 108.055060000°W

Surface:
BAT 34A-24-07-96

1903' FSL

1966' FWL

Gnd El= 5183

Pad El= 5182.5

NAD83

Lat: 39.420840999°N
Long: 108.060350232°W

NAD27

Lat: 39.420862812°N
Long: 108.059719428°W

UTM 13 NORTH

NAD 1983

NORTHING

14330514.728

EASTING

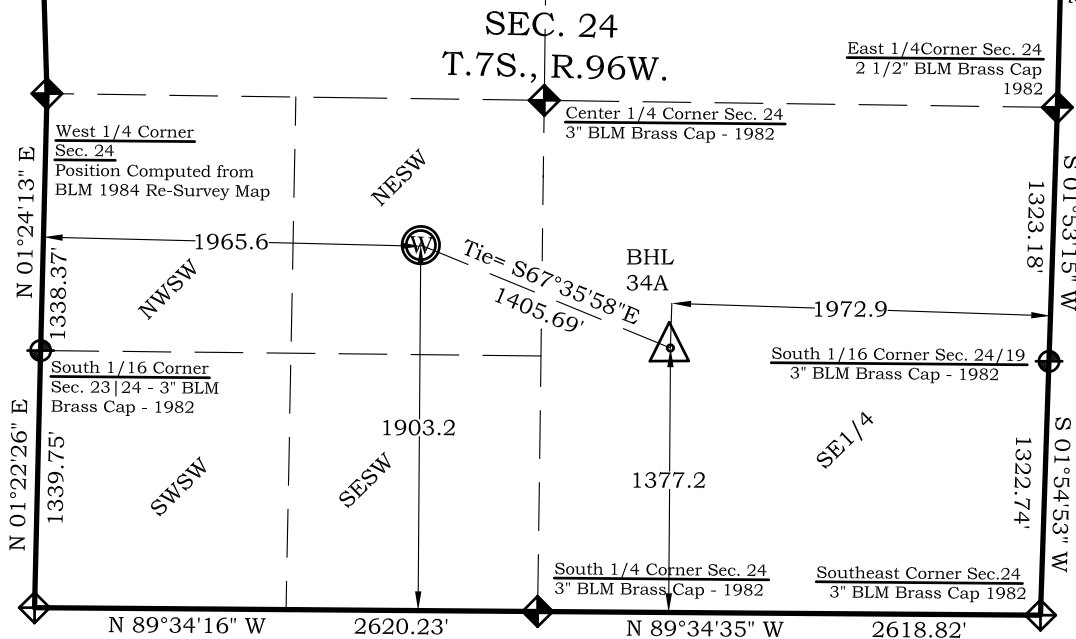
776085.675

Legend

- Field Surveyed Section Corner
- Field Surveyed Quarter Corner
- Calculated Section Corner Location
- Field Surveyed 1/6 Corner

Notes:

- LATITUDE AND LONGITUDE COORDINATES ARE DIFFERENTIALLY CORRECTED AND BASED ON PUBLISHED NGS CONTROL STATION "KOEPSSELL". SYSTEM: UTM ZONE: 13 NORTH DATUM: NAD 1983 (CONUS)
- ELEVATIONS ARE BASED ON NAVD OF 1983.
- ALL BOTTOM AND TOP HOLE LOCATIONS ARE MEASURED 90 DEGREES FROM SECTION LINE.
- USGS QUADRANGLE MAP "PARACHUTE".
- CURRENT SURFACE LAND USE: HAY FIELD.
- PDOP AT THE TIME OF LOCATION OF SURFACE WELL = 2.4



Prepared For Ursa Operating Company, LLC
Proposed BAT 34A-24-07-96 Well Situate in The
NE 1/4 SW 1/4 Section 24, Township 7 South, Range 96 West
of the 6 th. Principal Meridian, County of Garfield, State
of Colorado.

SURVEYOR'S CERTIFICATE

I, SCOTT E. AIBNER, A REGISTERED LAND SURVEYOR, LICENSED UNDER THE LAWS OF THE STATE OF COLORADO DO HEREBY CERTIFY THAT THE SURVEY SHOWN HEREON WAS PREPARED BY RIVER VALLEY SURVEY, INC., FOR URSA OPERATING COMPANY, LLC, UNDER MY DIRECT SUPERVISION AND THAT THIS PLAT IS A TRUE REPRESENTATION THEREOF.

BY: 
SCOTT E. AIBNER, COLORADO REG. NO. 31143



River Valley Survey, Inc.
110 East 3rd. Street, Suite 213
Rifle, Colorado 81650
Ph: 970-379-7846

Project: Speakman A Pad

Field Date: 08-05-10

Date: 06-12-13

Scale: 1"= 1000'

Sheet: 1 of 4

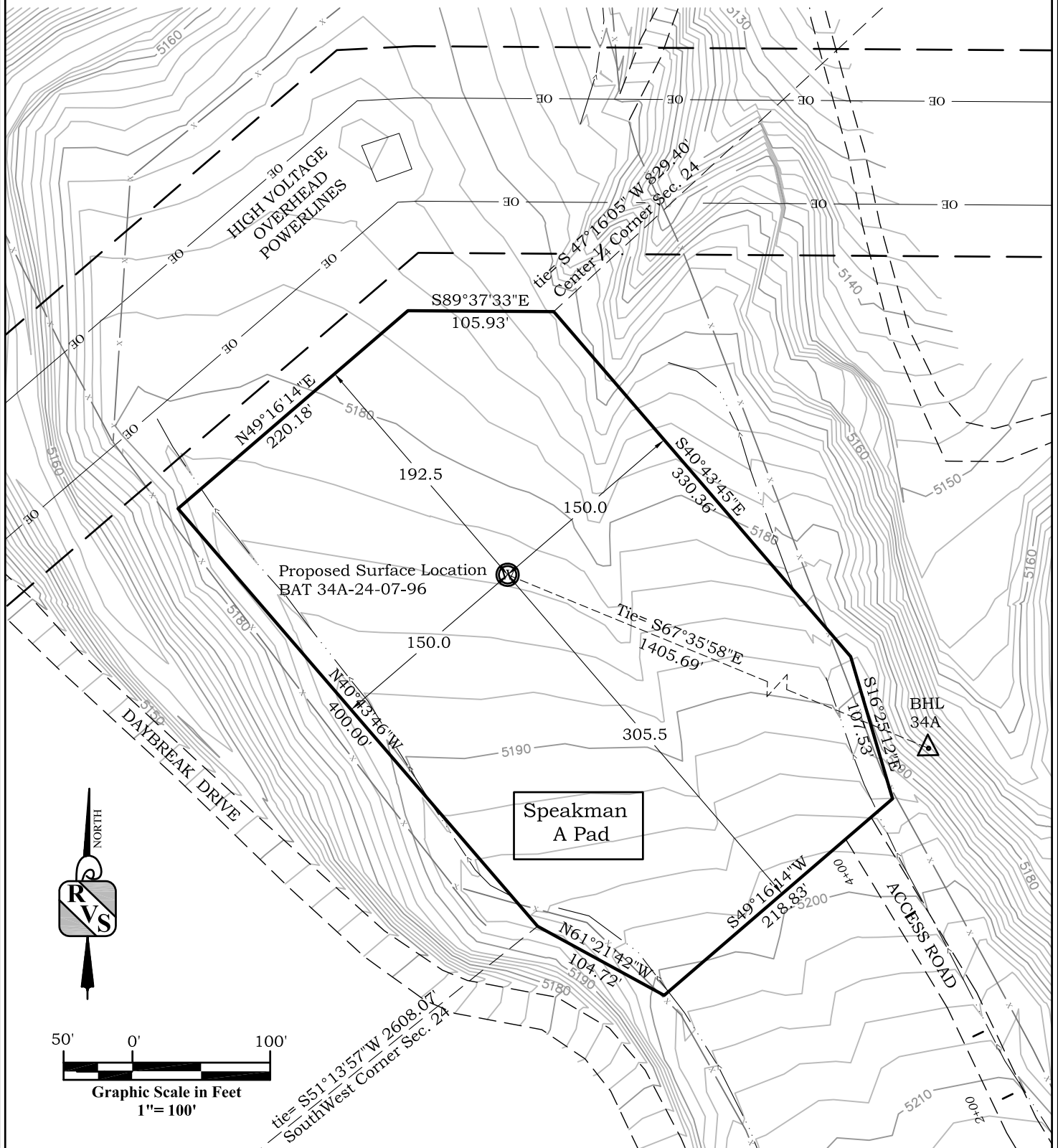
Well Location Plat Prepared For:
Ursa Operating Co., LLC

Situate In:
SW 1/4 Section 24, T7S., R. 96 W. of the
6th P.M., Garfield County, Colorado



Location Drawing BAT 34A-24-07-96

Section 24, Township 7 South, Range 96 West



River Valley Survey, Inc.
110 East 3rd. Street, Suite 213
Rifle, Colorado 81650
Ph: 970-379-7846

Project: Speakman A Pad

Field Date: 08-05-10

Date: 06-12-13

Scale: 1"= 100'

Sheet: 2 of 4

Well Location Plat Prepared For:
Ursa Operating Co., LLC

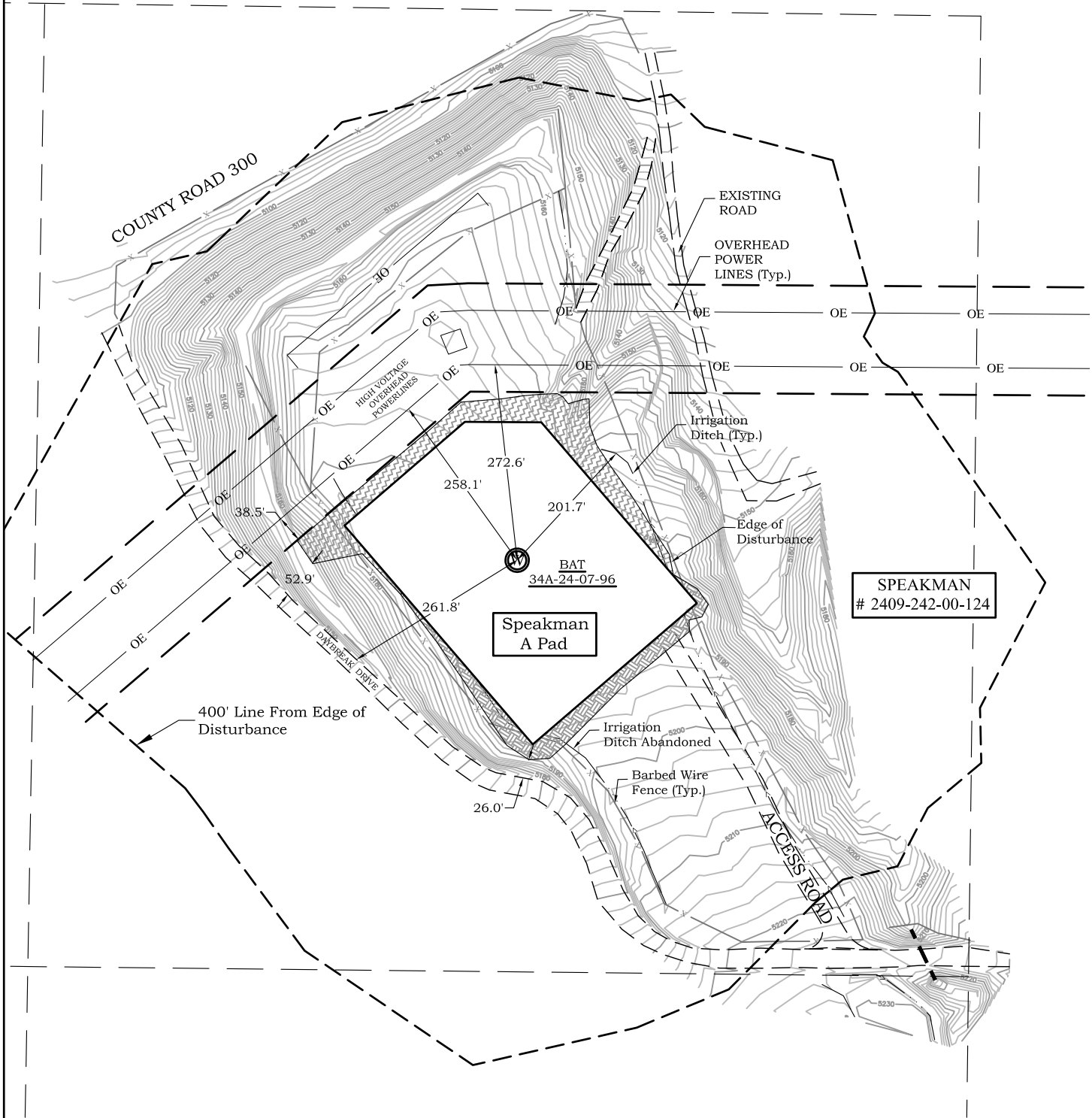
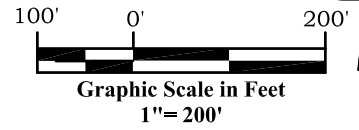
Situate In:
SW 1/4 Section 24, T7S., R. 96 W. of the
6th P.M., Garfield County, Colorado



Location Drawing

BAT 34A-24-07-96

Section 24, Township 7 South, Range 96 West



River Valley Survey, Inc.
110 East 3rd. Street, Suite 213
Rifle, Colorado 81650
Ph: 970-379-7846

Project: Speakman A Pad

Field Date: 08-05-10

Date: 06-12-13

Scale: 1"= 200'

Sheet: 3 of 4

Well Location Plat Prepared For:
Ursa Operating Co., LLC

Situate In:
SW 1/4 Section 24, T7S., R. 96 W. of the
6th P.M., Garfield County, Colorado

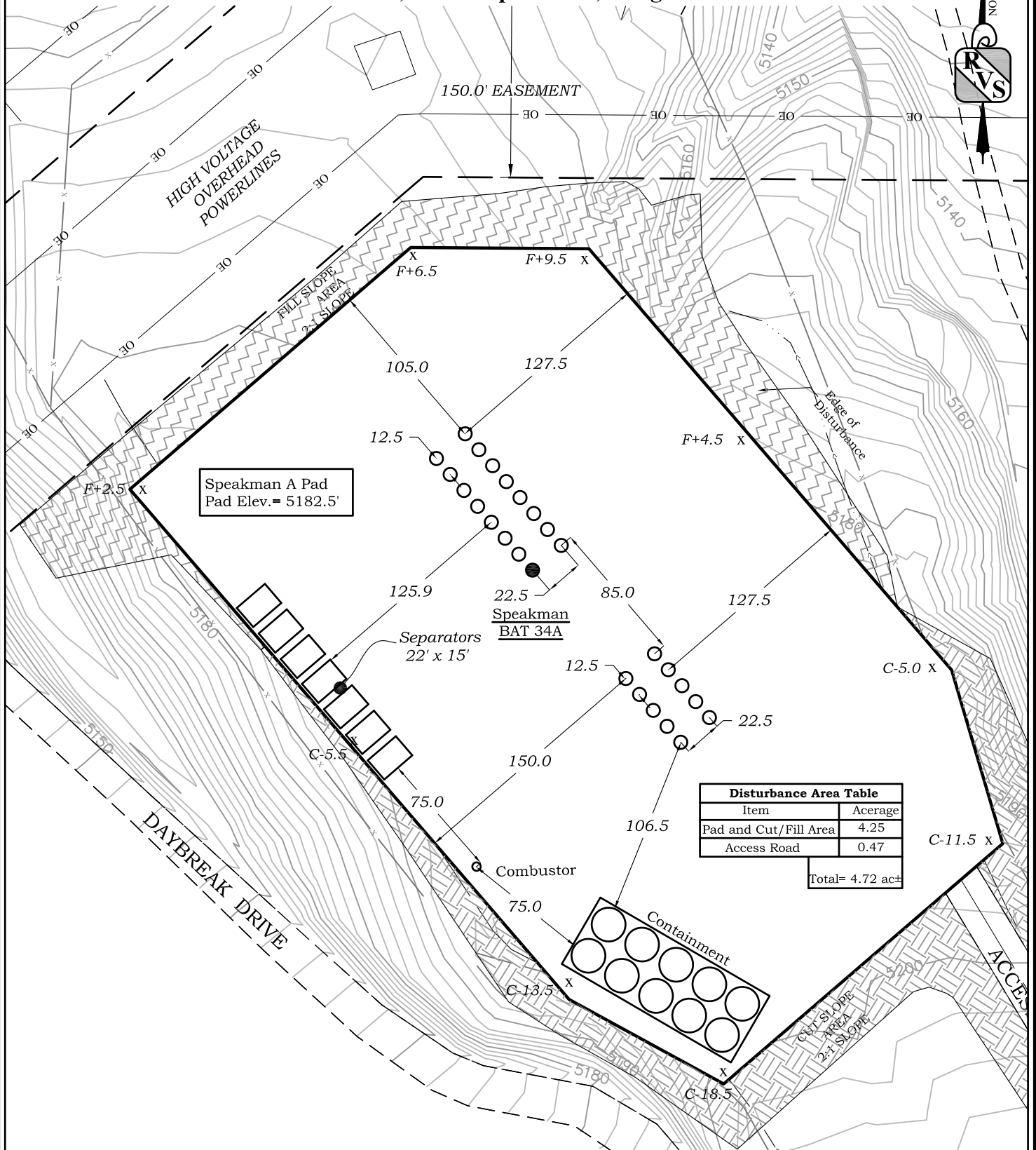
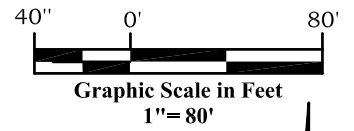


Facilities and Construction

Layout Drawing

Speakman A Pad

Section 24, Township 7 South, Range 96 West



Disturbance Area Table	
Item	Acerage
Pad and Cut/Fill Area	4.25
Access Road	0.47
Total= 4.72 ac±	



River Valley Survey, Inc.
110 East 3rd. Street, Suite 213
Rifle, Colorado 81650
Ph: 970-379-7846

Project: Speakman A Pad

Field Date: 08-05-10

Date: 06-12-13

Scale: 1"= 80'

Sheet: 4 of 4

Well Location Plat Prepared For:
Ursa Operating Co., LLC

Situate In:
SW 1/4 Section 24, T7S., R. 96 W. of the
6th P.M., Garfield County, Colorado

