

# Well Location Plat BAT 33A-24-07-96

Section 24, Township 7 South, Range 96 West

Northwest Corner Sec. 24  
2" Alum. Cap L.S. #17492  
2006

N 88°58'10" W

5411.26'

Northeast Corner Sec. 24  
3" Brass Cap L.S. #11643  
1982

**Note:** Improvements Exist Within 400' of  
Well Site. See Sheet 3.

Current Surface Land Use :  
Open Range Land

500' 0' 1000'

Graphic Scale in Feet  
1"= 1000'

**Bottom Hole:**  
**BAT 33A-24-07-96**

2614' FSL

1996' FEL

**NAD83**

Lat: 39.422887376°N

Long: 108.055777419°W

**NAD27**

Lat: 39.422909202°N

Long: 108.055146800°W

**Surface:**  
**BAT 33A-24-07-96**

1956' FSL

1949' FWL

Gnd El= 5183

Pad El= 5182.5

**NAD83**

Lat: 39.420983727°N

Long: 108.060411612°W

**NAD27**

Lat: 39.421005541°N

Long: 108.059780804°W

UTM 13 NORTH

**NAD 1983**

NORTHING

14330567.299

EASTING

776070.101

SEC. 24  
T.7S., R.96W.

Center 1/4 Corner Sec. 24  
3" BLM Brass Cap - 1982

East 1/4 Corner Sec. 24  
2 1/2" BLM Brass Cap - 1982

West 1/4 Corner  
Sec. 24  
Position Computed from  
BLM 1984 Re-Survey Map

1948.8

NESW

Tie= N64°02'09"E  
1482.17'

BHL  
33A

1996.3

South 1/16 Corner Sec. 24/19  
3" BLM Brass Cap - 1982

2614.4

1955.6

South 1/4 Corner Sec. 24  
3" BLM Brass Cap - 1982

Southeast Corner Sec. 24  
3" BLM Brass Cap - 1982

Southwest Corner Sec. 24  
3" BLM Brass Cap - 1982

N 89°34'16" W

2620.23'

N 89°34'35" W

2618.82'

Prepared For Ursa Operating Company, LLC  
Proposed BAT 33A-24-07-96 Well Situate in The  
NE $\frac{1}{4}$ SW $\frac{1}{4}$  Section 24, Township 7 South, Range 96 West  
of the 6 th. Principal Meridian, County of Garfield, State  
of Colorado.

## SURVEYOR'S CERTIFICATE

I, SCOTT E. AIBNER, A REGISTERED LAND SURVEYOR, LICENSED UNDER THE LAWS  
OF THE STATE OF COLORADO DO HEREBY CERTIFY THAT THE SURVEY SHOWN  
HEREON WAS PREPARED BY RIVER VALLEY SURVEY, INC., FOR URSA OPERATING  
COMPANY, LLC, R. ME OR UNDER MY DIRECT SUPERVISION AND THAT THIS  
PLAT IS A TRUE REPRESENTATION THEREOF.

BY:

SCOTT E. AIBNER, COLORADO REG. NO. 31143

## Notes:

1. LATITUDE AND LONGITUDE COORDINATES ARE  
DIFFERENTIALLY CORRECTED AND BASED ON PUBLISHED NGS  
CONTROL STATION "KOEPSSELL". SYSTEM: UTM ZONE: 13 NORTH  
DATUM: NAD 1983 (CONUS)
2. ELEVATIONS ARE BASED ON NAVD OF 1983.
3. ALL BOTTOM AND TOP HOLE LOCATIONS ARE MEASURED  
90 DEGREES FROM SECTION LINE.
4. USGS QUADRANGLE MAP "PARACHUTE".
5. CURRENT SURFACE LAND USE: HAY FIELD.
6. PDOP AT THE TIME OF LOCATION OF SURFACE WELL = 2.4

- ◆ - Field Surveyed Section  
Corner
- ◆ - Field Surveyed Quarter  
Corner
- ⊙ - Calculated Section Corner  
Location
- ⊕ - Field Surveyed  $\frac{1}{6}$  Corner

## Legend



River Valley Survey, Inc.  
110 East 3rd. Street, Suite 213  
Rifle, Colorado 81650  
Ph: 970-379-7846

Project: Speakman A Pad

Field Date: 08-05-10

Date: 06-12-13

Scale: 1"= 1000'

Sheet: 1 of 4

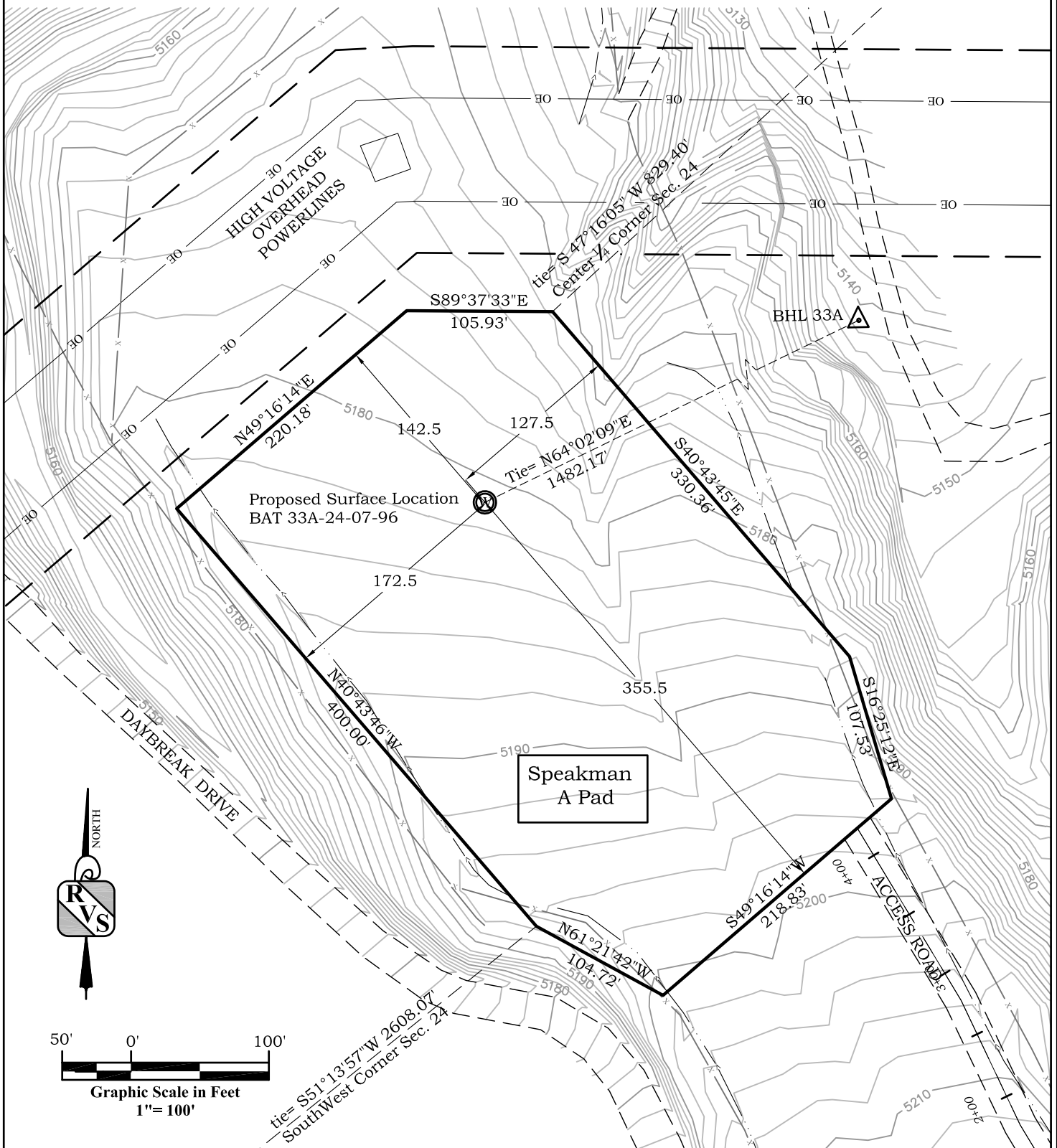
Well Location Plat Prepared For:  
Ursa Operating Co., LLC

Situate In:  
SW $\frac{1}{4}$  Section 24, T7S., R. 96 W. of the  
6th P.M., Garfield County, Colorado



# Location Drawing BAT 33A-24-07-96

Section 24, Township 7 South, Range 96 West



**River Valley Survey, Inc.**  
110 East 3rd. Street, Suite 213  
Rifle, Colorado 81650  
Ph: 970-379-7846

**Project:** Speakman A Pad

**Field Date:** 08-05-10

**Date:** 06-12-13

**Scale:** 1"= 100'

**Sheet:** 2 of 4

**Well Location Plat Prepared For:**  
**Ursa Operating Co., LLC**

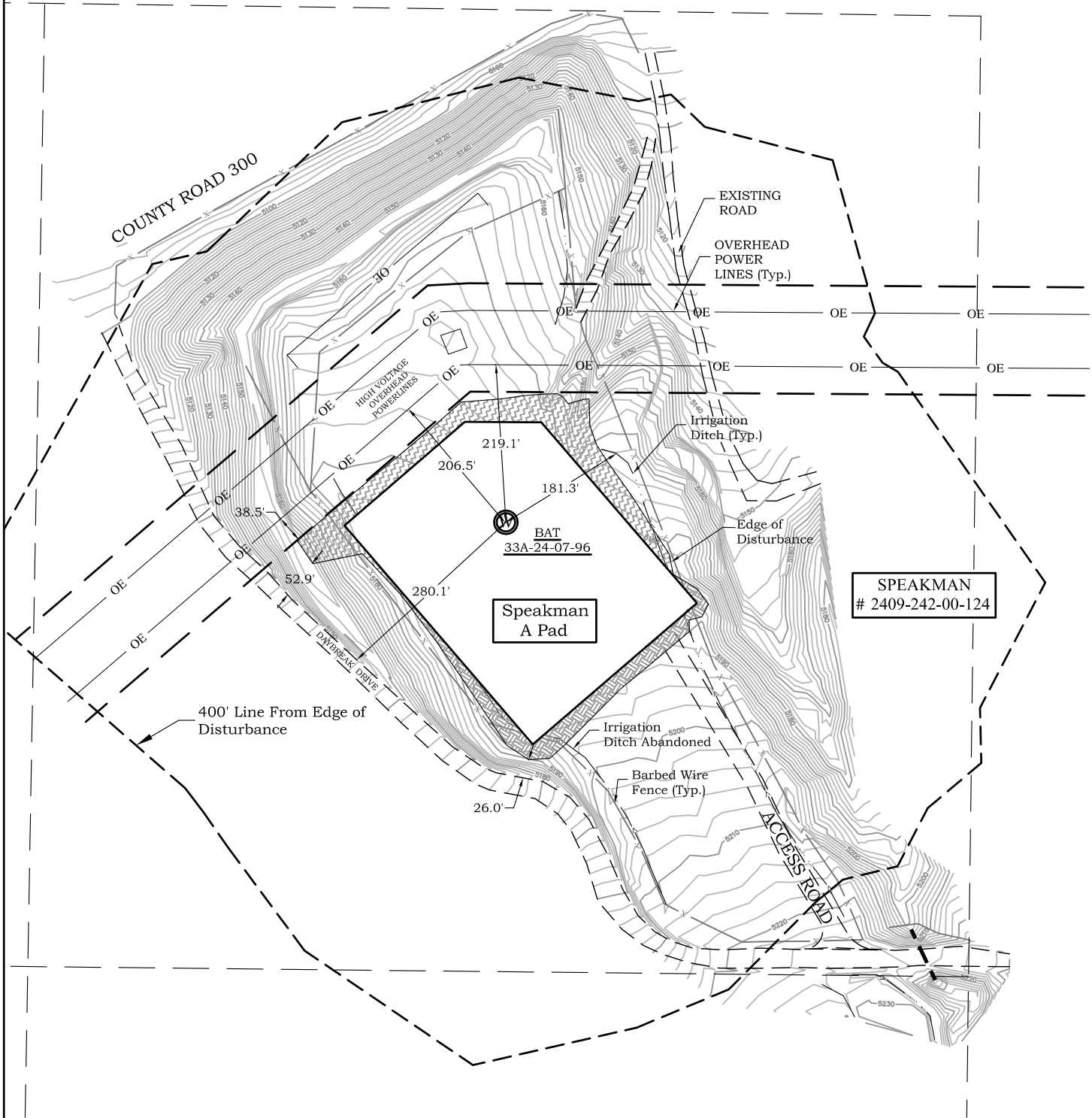
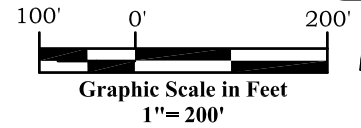
**Situate In:**  
SW 1/4 Section 24, T7S., R. 96 W. of the  
6th P.M., Garfield County, Colorado



# Location Drawing

## BAT 33A-24-07-96

### Section 24, Township 7 South, Range 96 West



**River Valley Survey, Inc.**  
110 East 3rd. Street, Suite 213  
Rifle, Colorado 81650  
Ph: 970-379-7846

**Project:** Speakman A Pad

**Field Date:** 08-05-10

**Date:** 06-12-13

**Scale:** 1"= 200'

**Sheet:** 3 of 4

**Well Location Plat Prepared For:**  
**Ursa Operating Co., LLC**

**Situate In:**  
SW 1/4 Section 24, T7S., R. 96 W. of the  
6th P.M., Garfield County, Colorado



# Facilities and Construction

## Layout Drawing

### Speakman A Pad

Section 24, Township 7 South, Range 96 West

40" 0' 80'

Graphic Scale in Feet  
1"=80'

NORTH



150.0' EASEMENT

HIGH VOLTAGE  
OVERHEAD  
POWERLINES

Speakman A Pad  
Pad Elev. = 5182.5'

Speakman  
BAT 33A

Separators  
22' x 15'

Combustor

Containment

Disturbance Area Table	
Item	Acerage
Pad and Cut/Fill Area	4.25
Access Road	0.47
Total= 4.72 ac±	

DAYBREAK DRIVE

ACCESS



**River Valley Survey, Inc.**  
110 East 3rd. Street, Suite 213  
Rifle, Colorado 81650  
Ph: 970-379-7846

**Project:** Speakman A Pad

**Field Date:** 08-05-10

**Date:** 06-12-13

**Scale:** 1"= 80'

**Sheet:** 4 of 4

**Well Location Plat Prepared For:**  
**Ursa Operating Co., LLC**

**Situate In:**  
SW 1/4 Section 24, T7S., R. 96 W. of the  
6th P.M., Garfield County, Colorado

