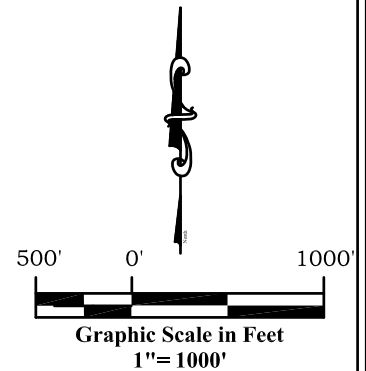
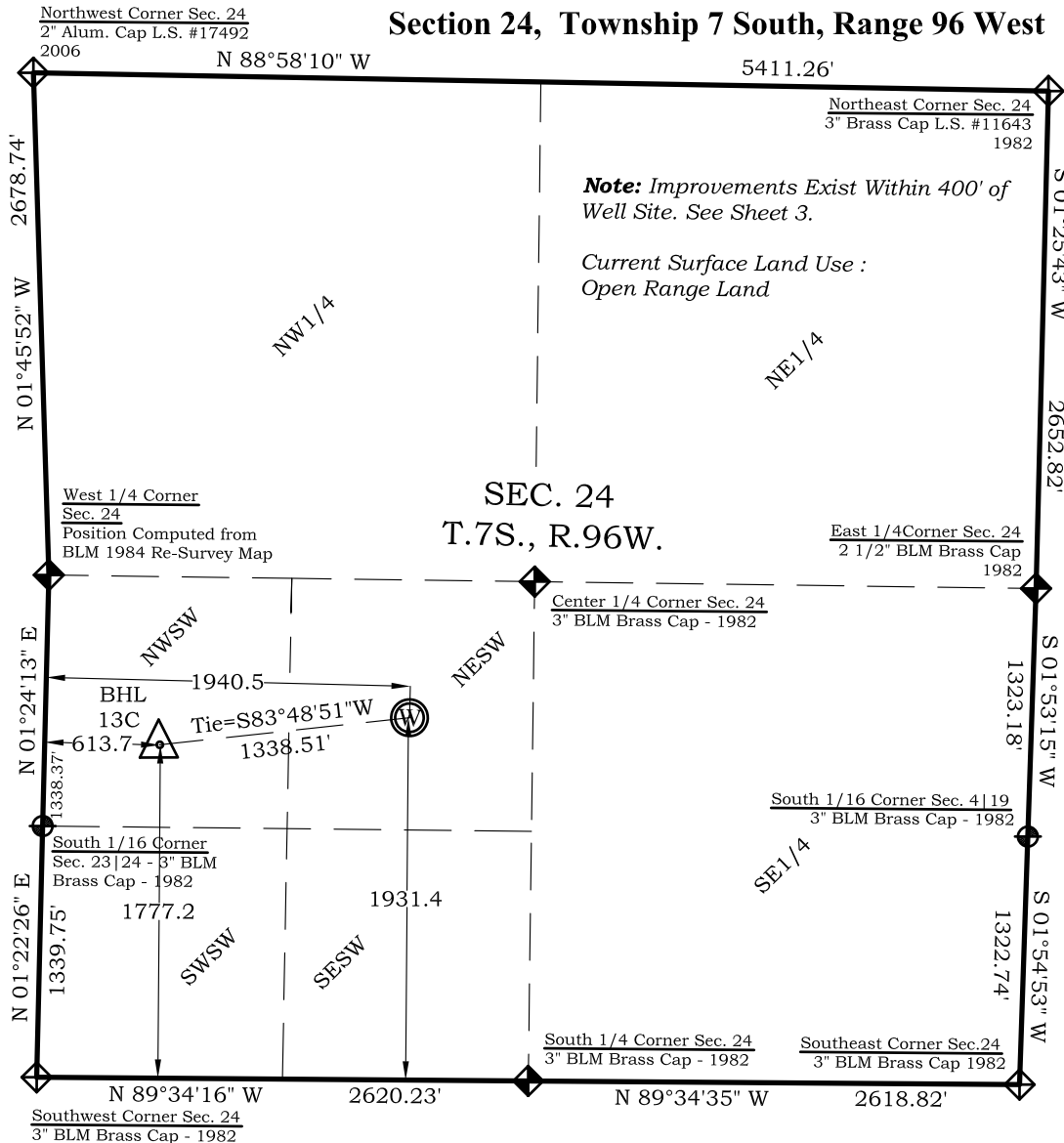


Well Location Plat BAT 13C-24-07-96

Section 24, Township 7 South, Range 96 West



Bottom Hole:
BAT 13C-24-07-96
1777' FSL
614' FWL
NAD83
Lat: 39.420397092°N
Long: 108.065128211°W

NAD27
Lat: 39.420418901°N
Long: 108.064497200°W

Surface:
BAT 13C-24-07-96
1931' FSL
1940' FWL
Gnd El= 5183
Pad El= 5182.5
NAD83
Lat: 39.420916657°N
Long: 108.060440163°W

NAD27
Lat: 39.420938471°N
Long: 108.059809354°W

UTM 13 NORTH
NAD 1983
NORTHING
14330543.146
EASTING
776061.206

Prepared For Ursa Operating Company, LLC
Proposed BAT 13C-24-07-96 Well Situate in The
NE $\frac{1}{4}$ SW $\frac{1}{4}$ Section 24, Township 7 South, Range 96 West
of the 6 th. Principal Meridian, County of Garfield, State
of Colorado.

SURVEYOR'S CERTIFICATE

I, SCOTT E. AIBNER, A REGISTERED LAND SURVEYOR, LICENSED UNDER THE LAWS OF THE STATE OF COLORADO DO HEREBY CERTIFY THAT THE SURVEY SHOWN HEREON WAS PREPARED BY RIVER VALLEY SURVEY, INC., FOR URSA OPERATING COMPANY, LLC, FOR ME OR UNDER MY DIRECT SUPERVISION AND THAT THIS PLAT IS A TRUE REPRESENTATION THEREOF.

SCOTT E. AIBNER
31143
PROFESSIONAL LAND SURVEYOR

BY: SCOTT E. AIBNER, COLORADO REG. NO. 31143

Notes:

1. LATITUDE AND LONGITUDE COORDINATES ARE DIFFERENTIALLY CORRECTED AND BASED ON PUBLISHED NGS CONTROL STATION "KOEPSSELL". SYSTEM: UTM ZONE: 13 NORTH DATUM: NAD 1983 (CONUS)
2. ELEVATIONS ARE BASED ON NAVD OF 1983.
3. ALL BOTTOM AND TOP HOLE LOCATIONS ARE MEASURED 90 DEGREES FROM SECTION LINE.
4. USGS QUADRANGLE MAP "PARACHUTE".
5. CURRENT SURFACE LAND USE: HAY FIELD.
6. PDOP AT THE TIME OF LOCATION OF SURFACE WELL = 2.4

- Legend**
- Field Surveyed Section Corner
 - Field Surveyed Quarter Corner
 - Calculated Section Corner Location
 - Field Surveyed $\frac{1}{6}$ Corner



River Valley Survey, Inc.
110 East 3rd. Street, Suite 213
Rifle, Colorado 81650
Ph: 970-379-7846

Project: Speakman A Pad

Field Date: 08-05-10

Date: 06-06-13

Scale: 1"= 1000'

Sheet: 1 of 4

Well Location Plat Prepared For:
Ursa Operating Co., LLC

Situate In:
SW $\frac{1}{4}$ Section 24, T7S., R. 96 W. of the
6th P.M., Garfield County, Colorado

