



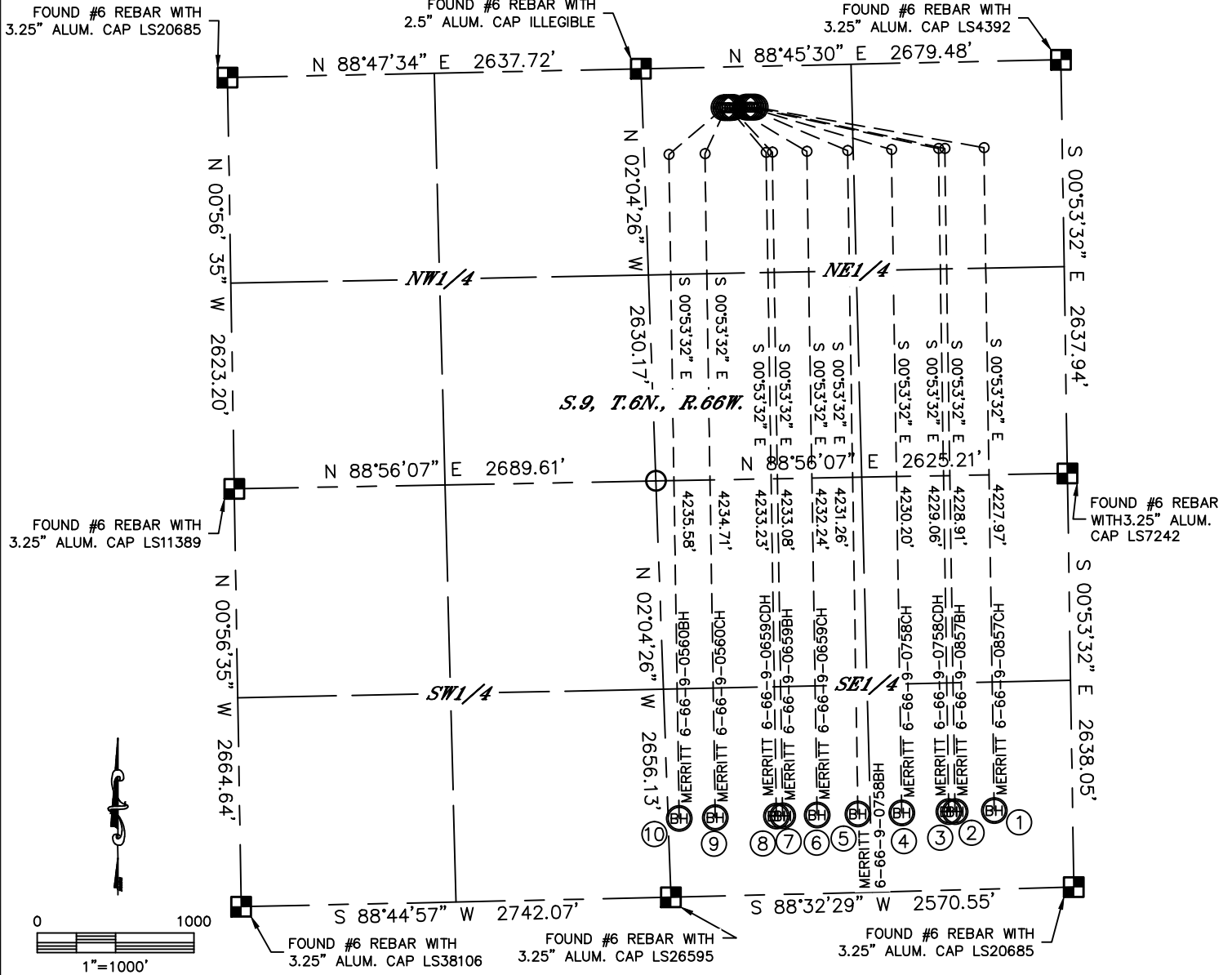
Lat40°, Inc. 1635 Foxtrail Drive, Suite 325 Loveland, CO 970-776-3321

MULTI-WELL PLAN

MERRITT 6-66-9 PAD

THIS MAP DOES NOT REPRESENT A BOUNDARY SURVEY

SECTION: 9
TOWNSHIP: 6N
RANGE: 66W



①
-BOTTOM HOLE-
MERRITT 6-66-9-0857CH
500' FSL
500' FEL
LAT: 40.49698°N
LONG: 104.77512°W

②
-BOTTOM HOLE-
MERRITT 6-66-9-0857BH
500' FSL
750' FEL
LAT: 40.49697°N
LONG: 104.77602°W

③
-BOTTOM HOLE-
MERRITT 6-66-9-0758CDH
500' FSL
790' FEL
LAT: 40.49697°N
LONG: 104.77617°W

④
-BOTTOM HOLE-
MERRITT 6-66-9-0758CH
500' FSL
1090' FEL
LAT: 40.49695°N
LONG: 104.77725°W

⑤
-BOTTOM HOLE-
MERRITT 6-66-9-0758BH
500' FSL
1370' FEL
LAT: 40.49694°N
LONG: 104.77825°W

⑥
-BOTTOM HOLE-
MERRITT 6-66-9-0659CH
500' FSL
1630' FEL
LAT: 40.49693°N
LONG: 104.77919°W

⑦
-BOTTOM HOLE-
MERRITT 6-66-9-0659BH
500' FSL
1850' FEL
LAT: 40.49692°N
LONG: 104.77998°W

⑧
-BOTTOM HOLE-
MERRITT 6-66-9-0659CDH
500' FSL
1890' FEL
LAT: 40.49692°N
LONG: 104.78012°W

⑨
-BOTTOM HOLE-
MERRITT 6-66-9-0560CH
500' FSL
2280' FEL
LAT: 40.49690°N
LONG: 104.78152°W

⑩
-BOTTOM HOLE-
MERRITT 6-66-9-0560BH
500' FSL
2510' FEL
LAT: 40.49689°N
LONG: 104.78235°W



MULTI-WELL PLAN

MERRITT 6-66-9 PAD

SECTION: 9
TOWNSHIP: 6N
RANGE: 66W

