
MINERAL RESOURCES INC

**Bestway 6-11
WARRENBURG
Weld County , Colorado**

**Cement Surface Casing
11-Jun-2012**

Job Site Documents

The Road to Excellence Starts with Safety

| | | | | | | | |
|---|--------------------------|----------------------------|----------------------------------|---|--------------------------------|-------------------------------|-------------------------------|
| Sold To #: 345252 | | Ship To #: 2932238 | | Quote #: | | Sales Order #: 9584461 | |
| Customer: MINERAL RESOURCES INC | | | | Customer Rep: Benge, Red | | | |
| Well Name: Bestway | | | Well #: 6-11 | | API/UWI #: 05-123-35502 | | |
| Field: WARRENERG | | City (SAP): GREELEY | | County/Parish: Weld | | State: Colorado | |
| Contractor: Ensign | | | Rig/Platform Name/Num: 14 | | | | |
| Job Purpose: Cement Surface Casing | | | | | | | |
| Well Type: Development Well | | | | Job Type: Cement Surface Casing | | | |
| Sales Person: AARON, WESLEY | | | | Srv Supervisor: FANTASIA, JOSEPH | | MBU ID Emp #: 485445 | |
| Job Personnel | | | | | | | |
| HES Emp Name | Exp Hrs | Emp # | HES Emp Name | Exp Hrs | Emp # | HES Emp Name | Exp Hrs |
| BULINSKI, MATTHEW J | 6.5 | 483865 | FANTASIA, JOSEPH Brandon | 6.5 | 485445 | HOLMES, ANDREW Malcom | 6.5 |
| LANGE, TIMOTHY Paul | 6.5 | 520811 | RAMOS, REFUGIO Castro | 6.5 | 435413 | | |
| Equipment | | | | | | | |
| HES Unit # | Distance-1 way | HES Unit # | Distance-1 way | HES Unit # | Distance-1 way | HES Unit # | Distance-1 way |
| 11019824C | 35 mile | 11064046C | 35 mile | 11142998 | 35 mile | 11410470C | 35 mile |
| Job Hours | | | | | | | |
| Date | On Location Hours | Operating Hours | Date | On Location Hours | Operating Hours | Date | On Location Hours |
| 6-11-2012 | 4 | 1 | 6-12-2012 | 2.5 | 2.5 | | |
| TOTAL | | | | <i>Total is the sum of each column separately</i> | | | |
| Job | | | | Job Times | | | |
| Formation Name | | | | Date | | | |
| Formation Depth (MD) Top | | | | Time | | | |
| Bottom | | | | Time Zone | | | |
| Form Type | | | | Called Out | | | |
| Job depth MD | | | | On Location | | | |
| Water Depth | | | | Job Started | | | |
| Perforation Depth (MD) From | | | | Job Completed | | | |
| To | | | | Departed Loc | | | |
| Well Data | | | | | | | |
| Description | New / Used | Max pressure psig | Size in | ID in | Weight lbm/ft | Thread | Grade |
| Open Hole | | | | 13.75 | | | |
| Surface Casing | Unknown | | 9.625 | 8.921 | 36. | | |
| Tools and Accessories | | | | | | | |
| Type | Size | Qty | Make | Depth | Type | Size | Qty |
| Guide Shoe | | | | | Packer | | |
| Float Shoe | | | | | Bridge Plug | | |
| Float Collar | | | | | Retainer | | |
| Insert Float | | | | | | | |
| Stage Tool | | | | | | | |
| Miscellaneous Materials | | | | | | | |
| Gelling Agt | Conc | Surfactant | Conc | Acid Type | Qty | Conc | % |
| Treatment Fld | Conc | Inhibitor | Conc | Sand Type | Size | Qty | |
| Fluid Data | | | | | | | |
| Stage/Plug #: 1 | | | | | | | |
| Fluid # | Stage Type | Fluid Name | Qty | Qty uom | Mixing Density lbm/gal | Yield ft3/sk | Mix Fluid Gal/sk |
| | | | | | | | Rate bbl/min |
| | | | | | | | Total Mix Fluid Gal/sk |

Stage/Plug #: 1

| Stage/Plug #: 1 | | | | | | | | | |
|--|--------------------|-------------------------------|--------|-----------------------------------|------------------------|---------------------------|------------------|--------------|------------------------|
| Fluid # | Stage Type | Fluid Name | Qty | Qty uom | Mixing Density lbm/gal | Yield ft ³ /sk | Mix Fluid Gal/sk | Rate bbl/min | Total Mix Fluid Gal/sk |
| 1 | Fresh Water Spacer | | 10.00 | bbl | 8.33 | .0 | .0 | .0 | |
| 2 | SwiftCem B1 12# | SWIFTCEN (TM) SYSTEM (452990) | 205.0 | sacks | 12. | 2.48 | 14.63 | | 14.63 |
| 14.63 Gal | | FRESH WATER | | | | | | | |
| 3 | SwiftCem B1 13# | SWIFTCEN (TM) SYSTEM (452990) | 180.0 | sacks | 13. | 1.94 | 10.65 | 5.0 | 10.65 |
| 10.65 Gal | | FRESH WATER | | | | | | | |
| Calculated Values | | Pressures | | Volumes | | | | | |
| Displacement | 92 | Shut In: Instant | | Lost Returns | 0 | Cement Slurry | 153 | Pad | |
| Top Of Cement | | 5 Min | | Cement Returns | 45 | Actual Displacement | 91 | Treatment | |
| Frac Gradient | | 15 Min | | Spacers | 30 | Load and Breakdown | | Total Job | 274 |
| Rates | | | | | | | | | |
| Circulating | 6 | Mixing | 6 | Displacement | 6 | Avg. Job | 6 | | |
| Cement Left In Pipe | Amount | 0 ft | Reason | Shoe Joint | | | | | |
| Frac Ring # 1 @ | ID | Frac ring # 2 @ | ID | Frac Ring # 3 @ | ID | Frac Ring # 4 @ | ID | | |
| The Information Stated Herein Is Correct | | | | Customer Representative Signature | | | | | |

The Road to Excellence Starts with Safety

| | | | |
|---|----------------------------|--|-------------------------------|
| Sold To #: 345252 | Ship To #: 2932238 | Quote #: | Sales Order #: 9584461 |
| Customer: MINERAL RESOURCES INC | | Customer Rep: Bengé, Red | |
| Well Name: Bestway | Well #: 6-11 | API/UWI #: 05-123-35502 | |
| Field: WARRENERG | City (SAP): GREELEY | County/Parish: Weld | State: Colorado |
| Legal Description: | | | |
| Lat: N 0 deg. OR N 0 deg. 0 min. 0 secs. | | Long: E 0 deg. OR E 0 deg. 0 min. 0 secs. | |
| Contractor: Ensign | | Rig/Platform Name/Num: 14 | |
| Job Purpose: Cement Surface Casing | | | Ticket Amount: |
| Well Type: Development Well | | Job Type: Cement Surface Casing | |
| Sales Person: AARON, WESLEY | | Srvc Supervisor: FANTASIA, JOSEPH | MBU ID Emp #: 485445 |

| Activity Description | Date/Time | Cht # | Rate bbl/min | Volume bbl | | Pressure psig | | Comments |
|--|------------------|-------|--------------|------------|-------|---------------|--------|--|
| | | | | Stage | Total | Tubing | Casing | |
| Arrive at Location from Service Center | 06/11/2012 20:00 | | | | | | | |
| Assessment Of Location Safety Meeting | 06/11/2012 20:15 | | | | | | | |
| Start Job | 06/12/2012 00:10 | | | | | | | |
| Test Lines | 06/12/2012 00:14 | | | | | | | PRESSURE TEST LINES TO 3500 PSI |
| Pump Spacer 1 | 06/12/2012 00:16 | | 5 | 30 | | | 75.0 | 30 BBLS WATER WITH RED TRACER ADDED IN LAST 10 BBLS |
| Pump Lead Cement | 06/12/2012 00:24 | | 7 | 90 | | | 140.0 | 205 SKS SWIFTCM MIXED AT 12 PPG USING RIG WATER |
| Pump Tail Cement | 06/12/2012 00:41 | | 6 | 63 | | | 131.0 | 180 SKS SWIFTCM MIXED AT 13 PPG USING RIG WATER |
| Shutdown | 06/12/2012 00:56 | | | | | | | |
| Drop Top Plug | 06/12/2012 00:58 | | | | | | | PLUG PRELOADED |
| Pump Displacement | 06/12/2012 00:59 | | 8 | 92 | | | 76.0 | GOOD RETURNS THROUGHOUT. CEMENT TO SURFACE AT 45 BBLS OF 91 BBLS TOTAL DISPLACEMENT. APPROX. 45 BBLS CEMENT TO SURFACE |
| Bump Plug | 06/12/2012 01:21 | | 3 | | | | 312.0 | PLUG LANDED AT 312 PSI AND PRESSURE HELD AT 620 FOR 3 MIN. |
| Check Floats | 06/12/2012 01:25 | | | | | | | FLOATS HELD |

HALLIBURTON

Cementing Job Log

| Activity Description | Date/Time | Cht # | Rate bbl/ min | Volume bbl | | Pressure psig | | Comments |
|----------------------|---------------------|----------|---------------------|---------------|-------|------------------|--------|----------|
| | | | | Stage | Total | Tubing | Casing | |
| End Job | 06/12/2012 01:30 | | | | | | | |

Sold To # : 345252

Ship To # :2932238

Quote # :

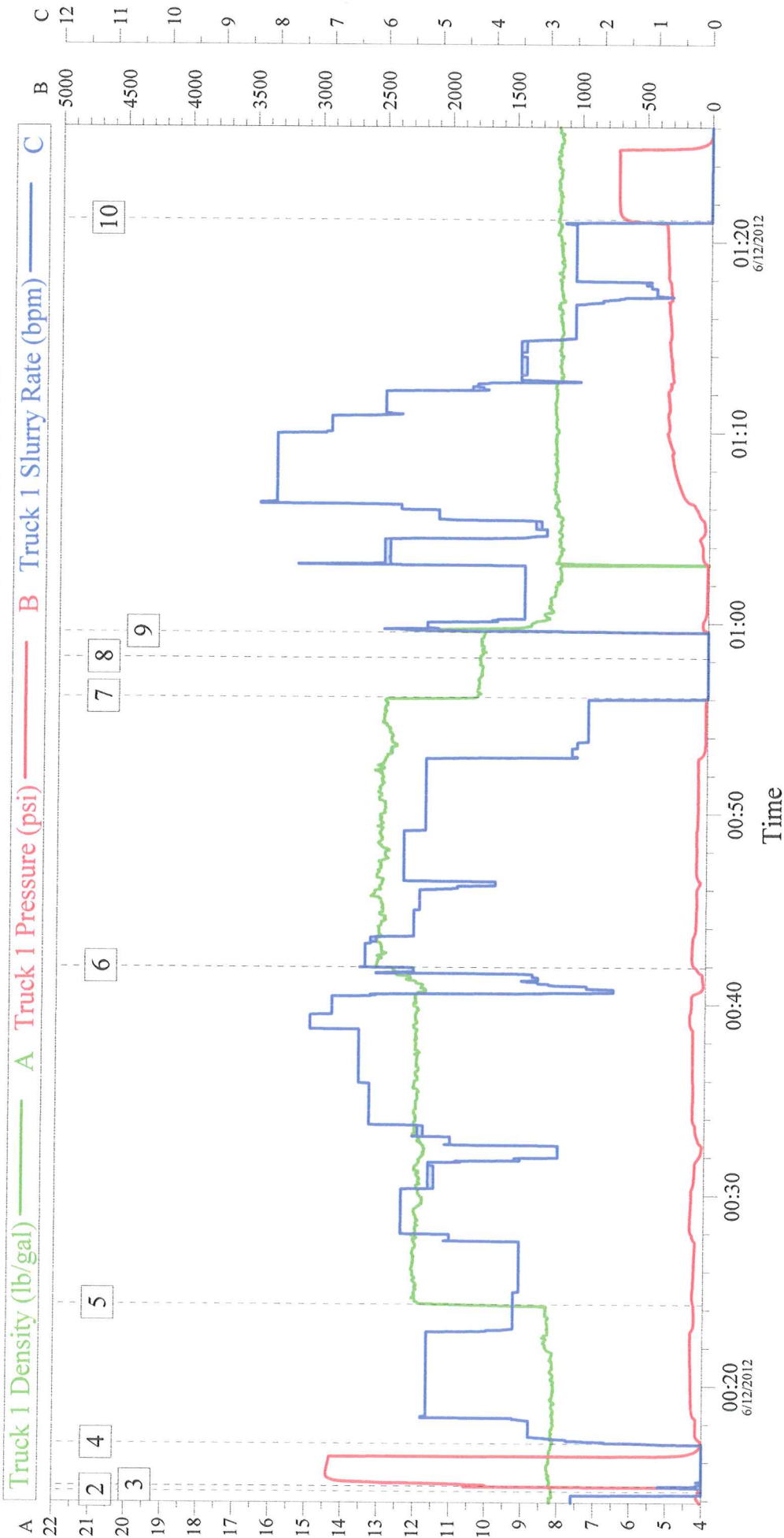
Sales Order # :

9584461

SUMMIT Version: 7.3.0030

Tuesday, June 12, 2012 01:42:00

MINERAL RESOURCES BESTWAY 6-11 SURFACE



Global Event Log

| | | | | | | | | |
|----|---------------|----------|----|------------------|----------|----|-------------------|----------|
| 1 | Starting Job | 23:46:04 | 2 | Start Job | 00:14:28 | 3 | Test Lines | 00:14:44 |
| 4 | Pump Spacer 1 | 00:16:58 | 5 | Pump Lead Cement | 00:24:17 | 6 | Pump Tail Cement | 00:41:57 |
| 7 | Shutdown | 00:56:06 | 8 | Drop Top Plug | 00:58:10 | 9 | Pump Displacement | 00:59:30 |
| 10 | Bump Plug | 01:21:10 | 11 | End Job | 01:26:38 | 12 | Ending Job | 01:29:14 |

Customer:

MINERAL RESOURCES

Job Date: 11-Jun-2012

Sales Order #: 9584461

Well Description: 9.625" SURFACE

UWI: