

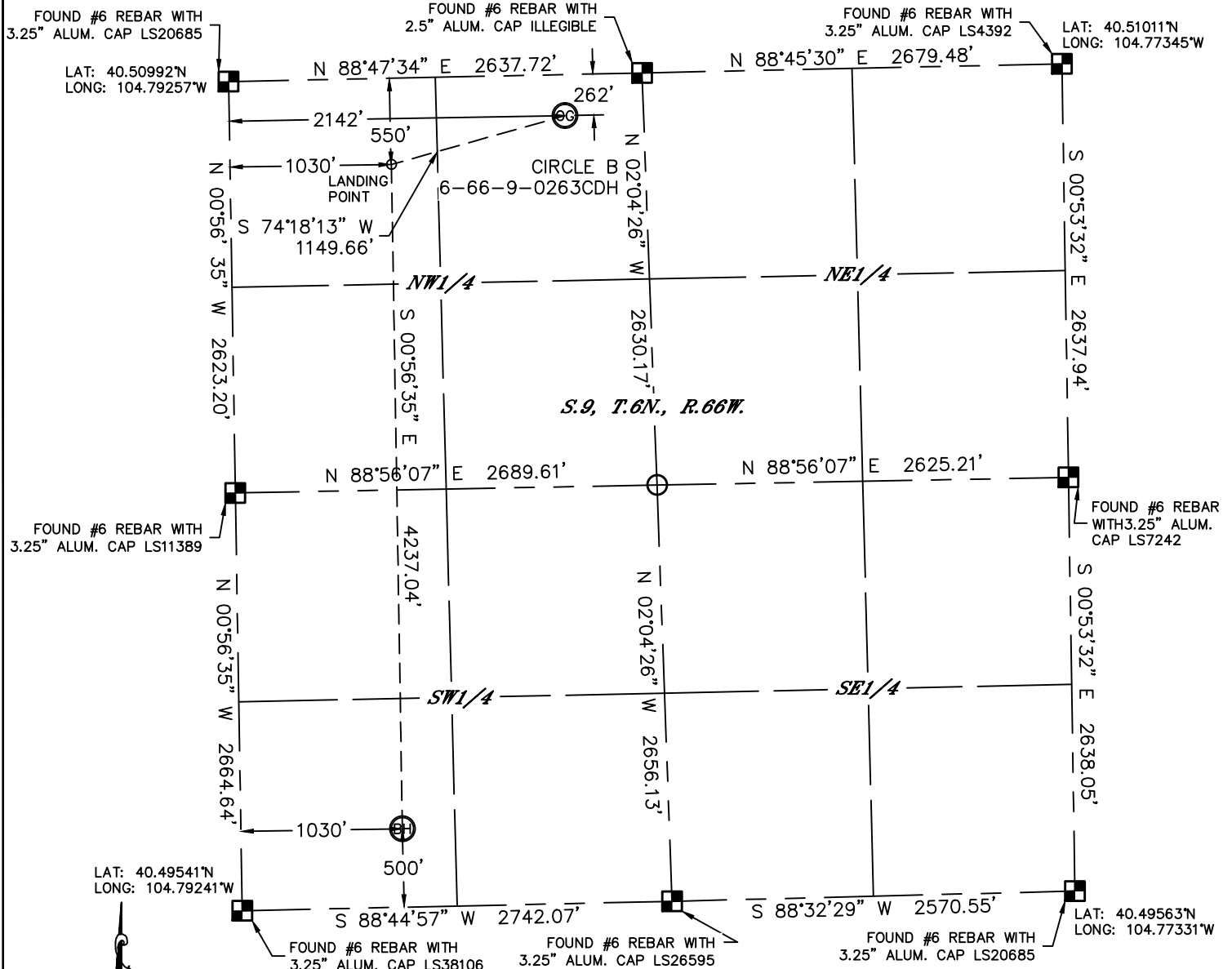


Lat40°, Inc. 1635 Foxtrail Drive, Suite 325 Loveland, CO 970-776-3321

WELL LOCATION CERTIFICATE

THIS MAP DOES NOT REPRESENT A BOUNDARY SURVEY

SECTION: 9
TOWNSHIP: 6N
RANGE: 66W



In accordance with a request from Jeff Fandrich with BILL BARRETT CORPORATION Lat40°, Inc. has determined the surface location of the CIRCLE B 6-66-9-0263CDH to be 262' from the NORTH line and 2142' from the WEST line and the bottom hole to be 500' from the SOUTH line and 1030' from the WEST line as measured at right angles from the section lines of Section 9, Township 6 North, Range 66 West of the Sixth Principal Meridian, County of Weld, State of Colorado.

I hereby state that this Well Location Certificate was prepared by me, or under my direct supervision, that the fieldwork was completed on 5/15/2013, for and on behalf of BILL BARRETT CORPORATION That this is not a Land Survey Plat or an Improvement Survey Plat, and that it is not to be relied upon for establishment of fence, building, or other future improvement lines.

SURFACE LOCATION

LAT: 40.50928°N (40°30'33.4"N)
LONG: 104.78486°W (104°47'05.5"W)
LAT: 40.50929°N (NAD27)
LONG: 104.78434°W (NAD27)
PDOP: 1.4
ELEV: 4814'

1/4, 1/4: NE1/4NW1/4

NEAREST PROPERTY LINE: 262' NORTH

LANDING POINT

LAT: 40.50845°N (40°30'30.4"N)
LONG: 104.78885°W (104°47'19.9"W)
LAT: 40.50847°N (NAD27)
LONG: 104.78833°W (NAD27)

BOTTOM HOLE

LAT: 40.49682°N (40°29'48.5"N)
LONG: 104.78872°W (104°47'19.4"W)
LAT: 40.49684°N (NAD27)
LONG: 104.78820°W (NAD27)

NOTE:

- 1) Bearings shown are Grid Bearings of the Colorado State Plane Coordinate System, North Zone, North American Datum 1983/2007. The lineal dimensions as contained herein are based upon the "U.S. Survey Foot."
- 2) Ground elevations are based on an observed GPS elevation (NAVD 1988 DATUM).
- 3) IMPROVEMENTS: See LOCATION DRAWING for all visible improvements within 400' of disturbed area.
- 4) SURFACE USE: CROPLAND
- 5) INSTRUMENT OPERATOR: WYATT HALL

NOTE

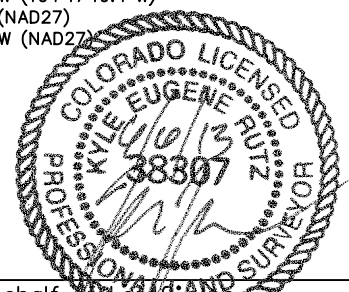
According to Colorado law, you must commence any legal action based upon any defect in this W.L.C. within three years after you discover such defect. In no event, may any action based upon any defect in this survey be commenced more than ten years after the date of the certificate shown hereon. (13-80-105 C.R.S.)

LEGEND

- = ALIQUOT MONUMENT AS DESCRIBED
- = CALCULATED POSITION

Kyle E. Rutz-On behalf
Colorado Licensed Professional
Land Surveyor No. 38307

DATE: 6/5/2013
PROJECT#: 2012112





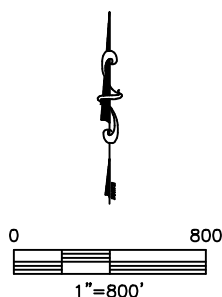
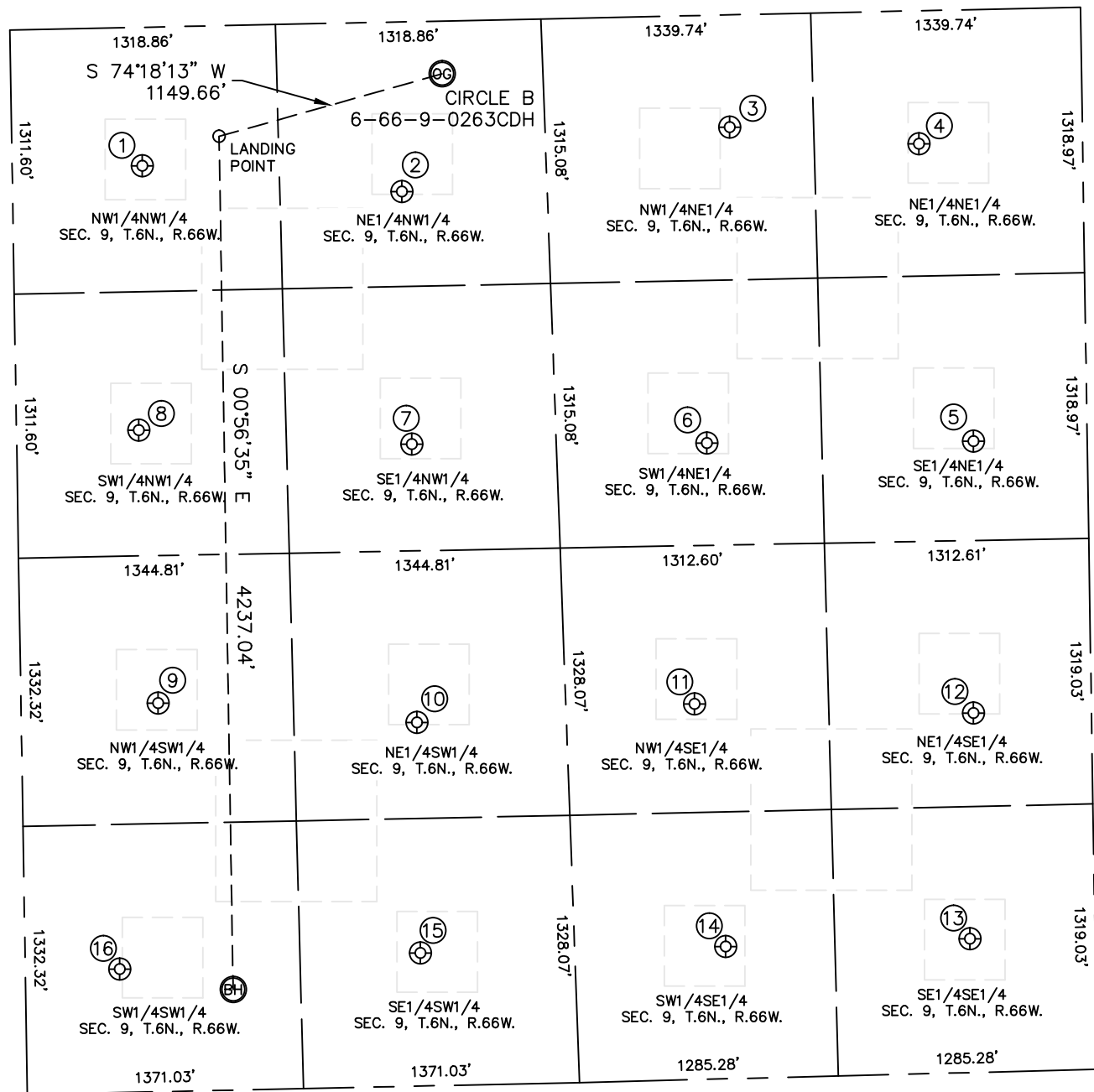
Lat40°, Inc. 1635 Foxtrail Drive, Suite 325 Loveland, CO 970-776-3321

SITE SKETCH

CIRCLE B 6-66-9-0263CDH

(1 OF 2)

SECTION: 9
TOWNSHIP: 6N
RANGE: 66W



DATE: 6/5/2013
PROJECT#: 2012112



Lat40°, Inc. 1635 Foxtrail Drive, Suite 325 Loveland, CO 970-776-3321

SITE SKETCH

CIRCLE B 6-66-9-0263CDH
(2 OF 2)

SECTION: 9
TOWNSHIP: 6N
RANGE: 66W

①

A&N FARMS 1
NW1/4NW1/4
688' FNL
646' FWL
LAT-40.50805°N
LONG-104.79023°W
PDOP: 1.9
ELEV: 4822'

②

A&N FARMS 21-9
NE1/4NW1/4
844' FNL
1933' FWL
LAT-40.50767°N
LONG-104.78559°W
PDOP: 3.3
ELEV: 4809'

③

INDIAN TREE 31-9
NW1/4NE1/4
558' FNL
1751' FEL
LAT-40.50852°N
LONG-104.77974°W
PDOP: 2.0
ELEV: 4848'

④

INDIAN TREE
NE1/4NE1/4
660' FNL
812' FEL
LAT-40.50827°N
LONG-104.77636°W
PDOP: 2.2
ELEV: 4861'

⑤

INDIAN TREE 42-9
SE1/4NE1/4
2143' FNL
566' FEL
LAT-40.50421°N
LONG-104.77543°W
PDOP: 2.2
ELEV: 4878'

⑥

INDIAN TREE 32-9
SW1/4NE1/4
2125' FNL
1889' FEL
LAT-40.50421°N
LONG-104.78019°W
PDOP: 2.2
ELEV: 4838'

⑦

A&N FARMS 22-9
SE1/4NW1/4
2098' FNL
1961' FWL
LAT-40.50423°N
LONG-104.78546°W
PDOP: 2.0
ELEV: 4798'

⑧

A&N FARMS 12-9
SW1/4NW1/4
2000' FNL
607' FWL
LAT-40.50445°N
LONG-104.79033°W
PDOP: 1.5
ELEV: 4815'

⑨

CEI-GUTTERSON 1
NW1/4SW1/4
1912' FSL
682' FWL
LAT-40.50068°N
LONG-104.79002°W
PDOP: 1.5
ELEV: 4816'

⑩

GUTTERSON 23-9
NE1/4SW1/4
1806' FSL
1964' FWL
LAT-40.50044°N
LONG-104.78540°W
PDOP: 2.3
ELEV: 4791'

⑪

LUCAS SCHOOL 33-9
NW1/4SE1/4
1865' FSL
1971' FEL
LAT-40.50066°N
LONG-104.78045°W
PDOP: 2.3
ELEV: 4811'

⑫

LUCAS SCHOOL 43-9
NE1/4SE1/4
1785' FSL
587' FEL
LAT-40.50050°N
LONG-104.77547°W
PDOP: 2.3
ELEV: 4851'

⑬

LUCAS SCHOOL 1
SE1/4SE1/4
665' FSL
621' FEL
LAT-40.49743°N
LONG-104.77556°W
PDOP: 1.9
ELEV: 4822'

⑭

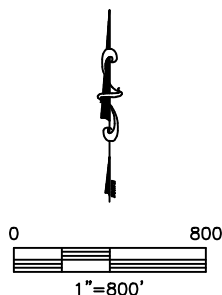
LUCAS SCHOOL 34-9
SW1/4SE1/4
657' FSL
1834' FEL
LAT-40.49735°N
LONG-104.77993°W
PDOP: 1.7
ELEV: 4785'

⑮

LOVELY 1
SE1/4SW1/4
660' FSL
1962' FWL
LAT-40.49729°N
LONG-104.78538°W
PDOP: 1.7
ELEV: 4801'

⑯

LOVELY 14-9
SW1/4SW1/4
613' FSL
468' FWL
LAT-40.49711°N
LONG-104.79075°W
PDOP: 2.3
ELEV: 4810'



DATE: 6/5/2013
PROJECT#: 2012112