



**Bill Barrett Corporation**

## COMPANY DETAILS: BILL BARRETT CORP

Calculation Method: Minimum Curvature  
Error System: ISCWSA  
Scan Method: Closest Approach 3D  
Error Surface: Elliptical Conic  
Warning Method: Error Ratio

## REFERENCE INFORMATION

Co-ordinate (N/E) Reference: Well Circle B 6-66-9-0263CDH, True North  
Vertical (TVD) Reference: KB @ 4837.0ft (Original Well Elev)  
Section (VS) Reference: Slot - (0.0N, 0.0E)  
Measured Depth Reference: KB @ 4837.0ft (Original Well Elev)  
Calculation Method: Minimum Curvature

## WELL DETAILS: Circle B 6-66-9-0263CDH

+N/-S	+E/-W	Northing	Easting	Latitude	Longitude
0.0	0.0	1429173.09	3198850.68	40° 30' 33.408 N	104° 47' 5.496 W

## SECTION DETAILS

Sec	MD	Inc	Azi	TVD	+N/-S	+E/-W	DLeg	TFace	VSec	Target
1	0.0	0.00	0.00	0.0	0.0	0.0	0.00	0.00	0.0	
2	1000.0	0.00	0.00	1000.0	0.0	0.0	0.00	0.00	0.0	
3	1960.2	14.40	281.30	1950.1	23.5	-117.7	1.50	281.30	4.3	
4	5682.6	14.40	281.30	5555.5	204.9	-1025.7	0.00	0.00	37.3	
5	6402.7	0.00	0.00	6268.1	222.5	-1114.0	2.00	180.00	40.5	
6	6902.7	0.00	0.00	6768.1	222.5	-1114.0	0.00	0.00	40.5	
7	7724.8	90.43	179.51	7289.0	-302.3	-1109.5	11.00	179.51	550.1	CB 0263CDH LP
8	11948.7	90.43	179.51	7257.3	-4525.8	-1073.1	0.00	0.00	4651.3	

## PROJECT DETAILS: WELD COUNTY, COLORADO

Geodetic System: US State Plane 1983  
Datum: North American Datum 1983  
Ellipsoid: GRS 1980  
Zone: Colorado Northern Zone

## FORMATION TOP DETAILS

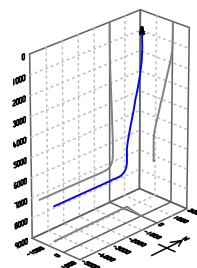
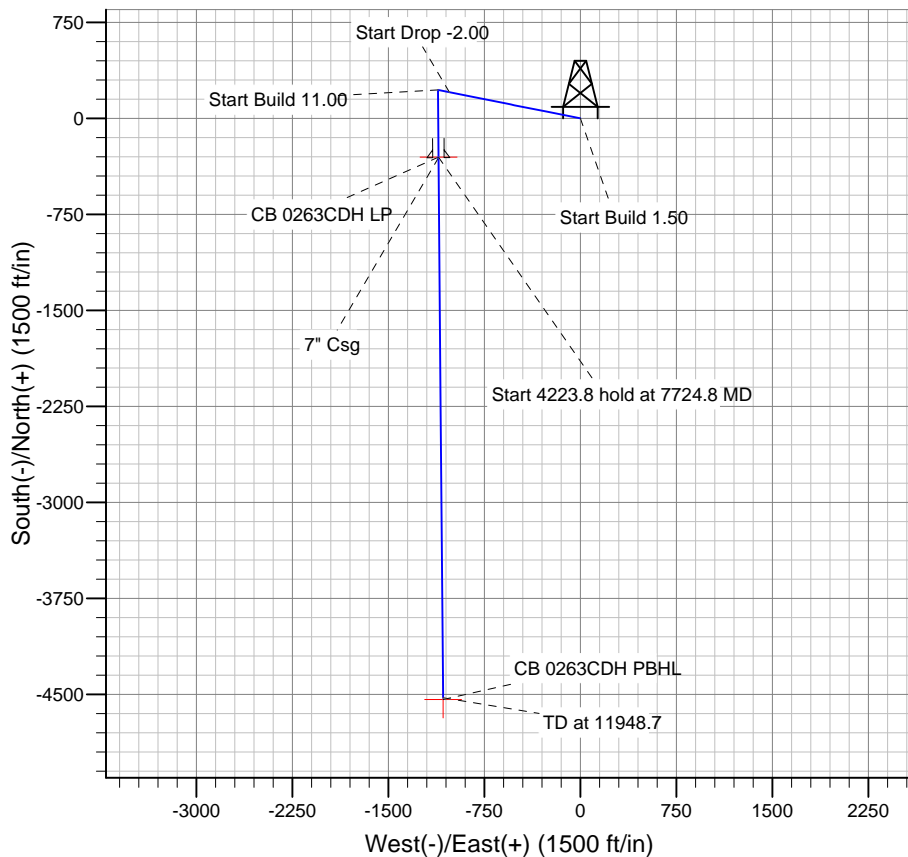
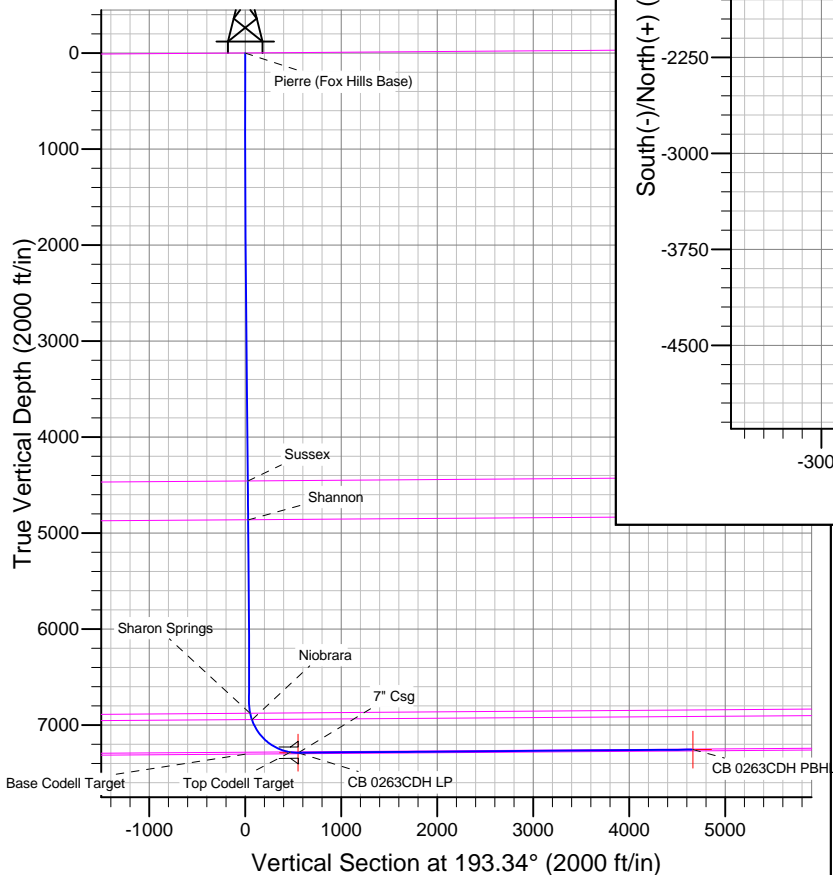
TVDPath	MDPath	Formation
		Base Codell Target
		Pierre (Fox Hills Base)
4459.2	4550.7	Sussex
4864.3	4969.0	Shannon
6879.7	7015.2	Sharon Springs
6946.5	7084.8	Niobrara
7283.4	7644.7	Top Codell Target

## WELLBORE TARGET DETAILS

Name	TVD	+N/-S	+E/-W	Shape
CB 0263CDH PBHL	7257.0	-4539.2	-1073.5	Point
CB 0263CDH LP	7289.0	-302.3	-1109.5	Point

## CASING DETAILS

TVD	MD	Name	Size
7288.9	7730.0	7" Csg	7



Azimuths to True North  
Magnetic North: 8.61°

Magnetic Field  
Strength: 52975.0snT  
Dip Angle: 67.07°  
Date: 6/17/2013  
Model: IGRF2010

# **BILL BARRETT CORP**

**WELD COUNTY, COLORADO**

**Circle B 6-66-9 Pad**

**Circle B 6-66-9-0263CDH**

**Wellbore #1**

**Plan: Design #1**

## **Standard Planning Report**

**17 June, 2013**

# Bill Barrett Corp

## Planning Report

<b>Database:</b>	Compass	<b>Local Co-ordinate Reference:</b>	Well Circle B 6-66-9-0263CDH
<b>Company:</b>	BILL BARRETT CORP	<b>TVD Reference:</b>	KB @ 4837.0ft (Original Well Elev)
<b>Project:</b>	WELD COUNTY, COLORADO	<b>MD Reference:</b>	KB @ 4837.0ft (Original Well Elev)
<b>Site:</b>	Circle B 6-66-9 Pad	<b>North Reference:</b>	True
<b>Well:</b>	Circle B 6-66-9-0263CDH	<b>Survey Calculation Method:</b>	Minimum Curvature
<b>Wellbore:</b>	Wellbore #1		
<b>Design:</b>	Design #1		

<b>Project</b>	WELD COUNTY, COLORADO		
<b>Map System:</b>	US State Plane 1983	<b>System Datum:</b>	Mean Sea Level
<b>Geo Datum:</b>	North American Datum 1983		
<b>Map Zone:</b>	Colorado Northern Zone		

Site		Circle B 6-66-9 Pad				
Site Position:		Northing:	1,429,169.21 ft	Latitude:	40° 30' 33.372 N	
From:	Lat/Long	Easting:	3,198,820.12ft	Longitude:	104° 47' 5.892 W	
Position Uncertainty:		0.0 ft	Slot Radius:	"	Grid Convergence:	0.46 °

Well	Circle B 6-66-9-0263CDH					
Well Position	+N-S	3.6 ft	Northing:	1,429,173.09 ft	Latitude:	40° 30' 33.408 N
	+E-W	30.6 ft	Easting:	3,198,850.68 ft	Longitude:	104° 47' 5.496 W
Position Uncertainty		0.0 ft	Wellhead Elevation:	ft	Ground Level:	4,814.0 ft

<b>Wellbore</b>	Wellbore #1				
<b>Magnetics</b>	<b>Model Name</b>	<b>Sample Date</b>	<b>Declination (°)</b>	<b>Dip Angle (°)</b>	<b>Field Strength (nT)</b>
	IGRF2010	6/17/2013	8.61	67.07	52,975

<b>Design</b>	Design #1			
<b>Audit Notes:</b>				
<b>Version:</b>	<b>Phase:</b>	PLAN	<b>Tie On Depth:</b>	0.0
<b>Vertical Section:</b>	<b>Depth From (TVD) (ft)</b>	<b>+N/-S (ft)</b>	<b>+E/-W (ft)</b>	<b>Direction (°)</b>
	0.0	0.0	0.0	193.34

<b>Plan Sections</b>										
Measured Depth (ft)	Inclination (°)	Azimuth (°)	Vertical Depth (ft)	+N/-S (ft)	+E/-W (ft)	Dogleg Rate (°/100ft)	Build Rate (°/100ft)	Turn Rate (°/100ft)	TFO (°)	Target
0.0	0.00	0.00	0.0	0.0	0.0	0.00	0.00	0.00	0.00	
1,000.0	0.00	0.00	1,000.0	0.0	0.0	0.00	0.00	0.00	0.00	
1,960.2	14.40	281.30	1,950.1	23.5	-117.7	1.50	1.50	0.00	281.30	
5,682.6	14.40	281.30	5,555.5	204.9	-1,025.7	0.00	0.00	0.00	0.00	
6,402.7	0.00	0.00	6,268.1	222.5	-1,114.0	2.00	-2.00	0.00	180.00	
6,902.7	0.00	0.00	6,768.1	222.5	-1,114.0	0.00	0.00	0.00	0.00	
7,724.8	90.43	179.51	7,289.0	-302.3	-1,109.5	11.00	11.00	0.00	179.51	CB 0263CDH LP
11,948.7	90.43	179.51	7,257.3	-4,525.8	-1,073.1	0.00	0.00	0.00	0.00	

# Bill Barrett Corp

## Planning Report

<b>Database:</b>	Compass	<b>Local Co-ordinate Reference:</b>	Well Circle B 6-66-9-0263CDH
<b>Company:</b>	BILL BARRETT CORP	<b>TVD Reference:</b>	KB @ 4837.0ft (Original Well Elev)
<b>Project:</b>	WELD COUNTY, COLORADO	<b>MD Reference:</b>	KB @ 4837.0ft (Original Well Elev)
<b>Site:</b>	Circle B 6-66-9 Pad	<b>North Reference:</b>	True
<b>Well:</b>	Circle B 6-66-9-0263CDH	<b>Survey Calculation Method:</b>	Minimum Curvature
<b>Wellbore:</b>	Wellbore #1		
<b>Design:</b>	Design #1		

Planned Survey									
Measured Depth (ft)	Inclination (°)	Azimuth (°)	Vertical Depth (ft)	+N/-S (ft)	+E/-W (ft)	Vertical Section (ft)	Dogleg Rate (°/100ft)	Build Rate (°/100ft)	Turn Rate (°/100ft)
0.0	0.00	0.00	0.0	0.0	0.0	0.0	0.00	0.00	0.00
100.0	0.00	0.00	100.0	0.0	0.0	0.0	0.00	0.00	0.00
200.0	0.00	0.00	200.0	0.0	0.0	0.0	0.00	0.00	0.00
300.0	0.00	0.00	300.0	0.0	0.0	0.0	0.00	0.00	0.00
400.0	0.00	0.00	400.0	0.0	0.0	0.0	0.00	0.00	0.00
500.0	0.00	0.00	500.0	0.0	0.0	0.0	0.00	0.00	0.00
600.0	0.00	0.00	600.0	0.0	0.0	0.0	0.00	0.00	0.00
700.0	0.00	0.00	700.0	0.0	0.0	0.0	0.00	0.00	0.00
800.0	0.00	0.00	800.0	0.0	0.0	0.0	0.00	0.00	0.00
900.0	0.00	0.00	900.0	0.0	0.0	0.0	0.00	0.00	0.00
1,000.0	0.00	0.00	1,000.0	0.0	0.0	0.0	0.00	0.00	0.00
1,100.0	1.50	281.30	1,100.0	0.3	-1.3	0.0	1.50	1.50	0.00
1,200.0	3.00	281.30	1,199.9	1.0	-5.1	0.2	1.50	1.50	0.00
1,300.0	4.50	281.30	1,299.7	2.3	-11.5	0.4	1.50	1.50	0.00
1,400.0	6.00	281.30	1,399.3	4.1	-20.5	0.7	1.50	1.50	0.00
1,500.0	7.50	281.30	1,498.6	6.4	-32.0	1.2	1.50	1.50	0.00
1,600.0	9.00	281.30	1,597.5	9.2	-46.1	1.7	1.50	1.50	0.00
1,700.0	10.50	281.30	1,696.1	12.5	-62.7	2.3	1.50	1.50	0.00
1,800.0	12.00	281.30	1,794.2	16.3	-81.9	3.0	1.50	1.50	0.00
1,900.0	13.50	281.30	1,891.7	20.7	-103.5	3.8	1.50	1.50	0.00
1,960.2	14.40	281.30	1,950.1	23.5	-117.7	4.3	1.50	1.50	0.00
2,000.0	14.40	281.30	1,988.7	25.5	-127.4	4.6	0.00	0.00	0.00
2,100.0	14.40	281.30	2,085.5	30.3	-151.8	5.5	0.00	0.00	0.00
2,200.0	14.40	281.30	2,182.4	35.2	-176.2	6.4	0.00	0.00	0.00
2,300.0	14.40	281.30	2,279.2	40.1	-200.6	7.3	0.00	0.00	0.00
2,400.0	14.40	281.30	2,376.1	44.9	-225.0	8.2	0.00	0.00	0.00
2,500.0	14.40	281.30	2,473.0	49.8	-249.4	9.1	0.00	0.00	0.00
2,600.0	14.40	281.30	2,569.8	54.7	-273.8	10.0	0.00	0.00	0.00
2,700.0	14.40	281.30	2,666.7	59.6	-298.2	10.8	0.00	0.00	0.00
2,800.0	14.40	281.30	2,763.5	64.4	-322.6	11.7	0.00	0.00	0.00
2,900.0	14.40	281.30	2,860.4	69.3	-347.0	12.6	0.00	0.00	0.00
3,000.0	14.40	281.30	2,957.2	74.2	-371.4	13.5	0.00	0.00	0.00
3,100.0	14.40	281.30	3,054.1	79.0	-395.8	14.4	0.00	0.00	0.00
3,200.0	14.40	281.30	3,151.0	83.9	-420.1	15.3	0.00	0.00	0.00
3,300.0	14.40	281.30	3,247.8	88.8	-444.5	16.2	0.00	0.00	0.00
3,400.0	14.40	281.30	3,344.7	93.7	-468.9	17.1	0.00	0.00	0.00
3,500.0	14.40	281.30	3,441.5	98.5	-493.3	17.9	0.00	0.00	0.00
3,600.0	14.40	281.30	3,538.4	103.4	-517.7	18.8	0.00	0.00	0.00
3,700.0	14.40	281.30	3,635.2	108.3	-542.1	19.7	0.00	0.00	0.00
3,800.0	14.40	281.30	3,732.1	113.1	-566.5	20.6	0.00	0.00	0.00
3,900.0	14.40	281.30	3,829.0	118.0	-590.9	21.5	0.00	0.00	0.00
4,000.0	14.40	281.30	3,925.8	122.9	-615.3	22.4	0.00	0.00	0.00
4,100.0	14.40	281.30	4,022.7	127.8	-639.7	23.3	0.00	0.00	0.00
4,200.0	14.40	281.30	4,119.5	132.6	-664.1	24.2	0.00	0.00	0.00
4,300.0	14.40	281.30	4,216.4	137.5	-688.5	25.0	0.00	0.00	0.00
4,400.0	14.40	281.30	4,313.2	142.4	-712.9	25.9	0.00	0.00	0.00
4,500.0	14.40	281.30	4,410.1	147.3	-737.2	26.8	0.00	0.00	0.00
4,550.7	14.40	281.30	4,459.2	149.7	-749.6	27.3	0.00	0.00	0.00
<b>Sussex</b>									
4,600.0	14.40	281.30	4,507.0	152.1	-761.6	27.7	0.00	0.00	0.00
4,700.0	14.40	281.30	4,603.8	157.0	-786.0	28.6	0.00	0.00	0.00
4,800.0	14.40	281.30	4,700.7	161.9	-810.4	29.5	0.00	0.00	0.00
4,900.0	14.40	281.30	4,797.5	166.7	-834.8	30.4	0.00	0.00	0.00
4,969.0	14.40	281.30	4,864.3	170.1	-851.6	31.0	0.00	0.00	0.00

# Bill Barrett Corp

## Planning Report

<b>Database:</b>	Compass	<b>Local Co-ordinate Reference:</b>	Well Circle B 6-66-9-0263CDH
<b>Company:</b>	BILL BARRETT CORP	<b>TVD Reference:</b>	KB @ 4837.0ft (Original Well Elev)
<b>Project:</b>	WELD COUNTY, COLORADO	<b>MD Reference:</b>	KB @ 4837.0ft (Original Well Elev)
<b>Site:</b>	Circle B 6-66-9 Pad	<b>North Reference:</b>	True
<b>Well:</b>	Circle B 6-66-9-0263CDH	<b>Survey Calculation Method:</b>	Minimum Curvature
<b>Wellbore:</b>	Wellbore #1		
<b>Design:</b>	Design #1		

Planned Survey									
Measured Depth (ft)	Inclination (°)	Azimuth (°)	Vertical Depth (ft)	+N/-S (ft)	+E/-W (ft)	Vertical Section (ft)	Dogleg Rate (°/100ft)	Build Rate (°/100ft)	Turn Rate (°/100ft)
<b>Shannon</b>									
5,000.0	14.40	281.30	4,894.4	171.6	-859.2	31.2	0.00	0.00	0.00
5,100.0	14.40	281.30	4,991.2	176.5	-883.6	32.1	0.00	0.00	0.00
5,200.0	14.40	281.30	5,088.1	181.4	-908.0	33.0	0.00	0.00	0.00
5,300.0	14.40	281.30	5,184.9	186.2	-932.4	33.9	0.00	0.00	0.00
5,400.0	14.40	281.30	5,281.8	191.1	-956.8	34.8	0.00	0.00	0.00
5,500.0	14.40	281.30	5,378.7	196.0	-981.2	35.7	0.00	0.00	0.00
5,600.0	14.40	281.30	5,475.5	200.8	-1,005.6	36.6	0.00	0.00	0.00
5,682.6	14.40	281.30	5,555.5	204.9	-1,025.7	37.3	0.00	0.00	0.00
5,700.0	14.05	281.30	5,572.4	205.7	-1,029.9	37.5	2.00	-2.00	0.00
5,800.0	12.05	281.30	5,669.8	210.1	-1,052.1	38.3	2.00	-2.00	0.00
5,900.0	10.05	281.30	5,767.9	213.9	-1,070.9	38.9	2.00	-2.00	0.00
6,000.0	8.05	281.30	5,866.7	217.0	-1,086.3	39.5	2.00	-2.00	0.00
6,100.0	6.05	281.30	5,965.9	219.4	-1,098.3	39.9	2.00	-2.00	0.00
6,200.0	4.05	281.30	6,065.5	221.1	-1,107.0	40.3	2.00	-2.00	0.00
6,300.0	2.05	281.30	6,165.4	222.1	-1,112.2	40.5	2.00	-2.00	0.00
6,400.0	0.05	281.30	6,265.4	222.5	-1,114.0	40.5	2.00	-2.00	0.00
6,402.7	0.00	0.00	6,268.1	222.5	-1,114.0	40.5	2.00	-2.00	0.00
6,500.0	0.00	0.00	6,365.4	222.5	-1,114.0	40.5	0.00	0.00	0.00
6,600.0	0.00	0.00	6,465.4	222.5	-1,114.0	40.5	0.00	0.00	0.00
6,700.0	0.00	0.00	6,565.4	222.5	-1,114.0	40.5	0.00	0.00	0.00
6,800.0	0.00	0.00	6,665.4	222.5	-1,114.0	40.5	0.00	0.00	0.00
6,900.0	0.00	0.00	6,765.4	222.5	-1,114.0	40.5	0.00	0.00	0.00
6,902.7	0.00	0.00	6,768.1	222.5	-1,114.0	40.5	0.00	0.00	0.00
7,000.0	10.70	179.51	6,864.8	213.4	-1,113.9	49.3	11.00	11.00	0.00
7,015.2	12.37	179.51	6,879.7	210.4	-1,113.9	52.3	11.00	11.00	0.00
<b>Sharon Springs</b>									
7,084.8	20.03	179.51	6,946.5	191.0	-1,113.7	71.1	11.00	11.00	0.00
<b>Niobrara</b>									
7,100.0	21.70	179.51	6,960.7	185.6	-1,113.7	76.4	11.00	11.00	0.00
7,200.0	32.70	179.51	7,049.5	140.0	-1,113.3	120.7	11.00	11.00	0.00
7,300.0	43.70	179.51	7,128.0	78.2	-1,112.8	180.6	11.00	11.00	0.00
7,400.0	54.70	179.51	7,193.2	2.6	-1,112.1	254.0	11.00	11.00	0.00
7,500.0	65.70	179.51	7,242.8	-84.0	-1,111.4	338.1	11.00	11.00	0.00
7,600.0	76.70	179.51	7,275.0	-178.5	-1,110.5	429.9	11.00	11.00	0.00
7,644.7	81.61	179.51	7,283.4	-222.4	-1,110.2	472.5	11.00	11.00	0.00
<b>Top Codell Target</b>									
7,700.0	87.70	179.51	7,288.6	-277.4	-1,109.7	526.0	11.00	11.00	0.00
7,724.8	90.43	179.51	7,289.0	-302.3	-1,109.5	550.1	11.00	11.00	0.00
7,724.9	90.43	179.51	7,289.0	-302.3	-1,109.5	550.2	0.00	0.00	0.00
<b>CB 0263CDH LP</b>									
7,730.0	90.43	179.51	7,288.9	-307.4	-1,109.4	555.1	0.00	0.00	0.00
<b>7" Csg</b>									
7,800.0	90.43	179.51	7,288.4	-377.4	-1,108.8	623.1	0.00	0.00	0.00
7,900.0	90.43	179.51	7,287.6	-477.4	-1,108.0	720.2	0.00	0.00	0.00
8,000.0	90.43	179.51	7,286.9	-577.4	-1,107.1	817.3	0.00	0.00	0.00
8,100.0	90.43	179.51	7,286.1	-677.4	-1,106.3	914.4	0.00	0.00	0.00
8,200.0	90.43	179.51	7,285.4	-777.4	-1,105.4	1,011.5	0.00	0.00	0.00
8,300.0	90.43	179.51	7,284.6	-877.4	-1,104.5	1,108.6	0.00	0.00	0.00
8,400.0	90.43	179.51	7,283.9	-977.4	-1,103.7	1,205.7	0.00	0.00	0.00
8,500.0	90.43	179.51	7,283.1	-1,077.4	-1,102.8	1,302.7	0.00	0.00	0.00
8,600.0	90.43	179.51	7,282.4	-1,177.4	-1,101.9	1,399.8	0.00	0.00	0.00
8,700.0	90.43	179.51	7,281.6	-1,277.4	-1,101.1	1,496.9	0.00	0.00	0.00

# Bill Barrett Corp

## Planning Report

<b>Database:</b>	Compass	<b>Local Co-ordinate Reference:</b>	Well Circle B 6-66-9-0263CDH
<b>Company:</b>	BILL BARRETT CORP	<b>TVD Reference:</b>	KB @ 4837.0ft (Original Well Elev)
<b>Project:</b>	WELD COUNTY, COLORADO	<b>MD Reference:</b>	KB @ 4837.0ft (Original Well Elev)
<b>Site:</b>	Circle B 6-66-9 Pad	<b>North Reference:</b>	True
<b>Well:</b>	Circle B 6-66-9-0263CDH	<b>Survey Calculation Method:</b>	Minimum Curvature
<b>Wellbore:</b>	Wellbore #1		
<b>Design:</b>	Design #1		

### Planned Survey

Measured Depth (ft)	Inclination (°)	Azimuth (°)	Vertical Depth (ft)	+N/-S (ft)	+E/-W (ft)	Vertical Section (ft)	Dogleg Rate (°/100ft)	Build Rate (°/100ft)	Turn Rate (°/100ft)
8,800.0	90.43	179.51	7,280.9	-1,377.4	-1,100.2	1,594.0	0.00	0.00	0.00
8,900.0	90.43	179.51	7,280.1	-1,477.4	-1,099.4	1,691.1	0.00	0.00	0.00
9,000.0	90.43	179.51	7,279.4	-1,577.3	-1,098.5	1,788.2	0.00	0.00	0.00
9,100.0	90.43	179.51	7,278.6	-1,677.3	-1,097.6	1,885.3	0.00	0.00	0.00
9,200.0	90.43	179.51	7,277.9	-1,777.3	-1,096.8	1,982.4	0.00	0.00	0.00
9,300.0	90.43	179.51	7,277.1	-1,877.3	-1,095.9	2,079.5	0.00	0.00	0.00
9,400.0	90.43	179.51	7,276.4	-1,977.3	-1,095.1	2,176.6	0.00	0.00	0.00
9,500.0	90.43	179.51	7,275.6	-2,077.3	-1,094.2	2,273.7	0.00	0.00	0.00
9,600.0	90.43	179.51	7,274.9	-2,177.3	-1,093.3	2,370.8	0.00	0.00	0.00
9,700.0	90.43	179.51	7,274.1	-2,277.3	-1,092.5	2,467.9	0.00	0.00	0.00
9,800.0	90.43	179.51	7,273.4	-2,377.3	-1,091.6	2,565.0	0.00	0.00	0.00
9,900.0	90.43	179.51	7,272.6	-2,477.3	-1,090.8	2,662.1	0.00	0.00	0.00
10,000.0	90.43	179.51	7,271.9	-2,577.3	-1,089.9	2,759.2	0.00	0.00	0.00
10,100.0	90.43	179.51	7,271.1	-2,677.3	-1,089.0	2,856.3	0.00	0.00	0.00
10,200.0	90.43	179.51	7,270.4	-2,777.3	-1,088.2	2,953.4	0.00	0.00	0.00
10,300.0	90.43	179.51	7,269.6	-2,877.3	-1,087.3	3,050.5	0.00	0.00	0.00
10,400.0	90.43	179.51	7,268.9	-2,977.3	-1,086.4	3,147.6	0.00	0.00	0.00
10,500.0	90.43	179.51	7,268.1	-3,077.3	-1,085.6	3,244.7	0.00	0.00	0.00
10,600.0	90.43	179.51	7,267.4	-3,177.2	-1,084.7	3,341.8	0.00	0.00	0.00
10,700.0	90.43	179.51	7,266.6	-3,277.2	-1,083.9	3,438.9	0.00	0.00	0.00
10,800.0	90.43	179.51	7,265.9	-3,377.2	-1,083.0	3,536.0	0.00	0.00	0.00
10,900.0	90.43	179.51	7,265.1	-3,477.2	-1,082.1	3,633.1	0.00	0.00	0.00
11,000.0	90.43	179.51	7,264.4	-3,577.2	-1,081.3	3,730.2	0.00	0.00	0.00
11,100.0	90.43	179.51	7,263.6	-3,677.2	-1,080.4	3,827.3	0.00	0.00	0.00
11,200.0	90.43	179.51	7,262.9	-3,777.2	-1,079.6	3,924.4	0.00	0.00	0.00
11,300.0	90.43	179.51	7,262.1	-3,877.2	-1,078.7	4,021.5	0.00	0.00	0.00
11,400.0	90.43	179.51	7,261.4	-3,977.2	-1,077.8	4,118.6	0.00	0.00	0.00
11,500.0	90.43	179.51	7,260.6	-4,077.2	-1,077.0	4,215.7	0.00	0.00	0.00
11,600.0	90.43	179.51	7,259.9	-4,177.2	-1,076.1	4,312.8	0.00	0.00	0.00
11,700.0	90.43	179.51	7,259.1	-4,277.2	-1,075.3	4,409.9	0.00	0.00	0.00
11,800.0	90.43	179.51	7,258.4	-4,377.2	-1,074.4	4,507.0	0.00	0.00	0.00
11,900.0	90.43	179.51	7,257.6	-4,477.2	-1,073.5	4,604.1	0.00	0.00	0.00
11,948.7	90.43	179.51	7,257.3	-4,525.8	-1,073.1	4,651.3	0.00	0.00	0.00

CB 0263CDH PBHL

### Casing Points

Measured Depth (ft)	Vertical Depth (ft)	Name	Casing Diameter (")	Hole Diameter (")
7,730.0	7,288.9	7" Csg	7	8-3/4

# Bill Barrett Corp

## Planning Report

<b>Database:</b>	Compass	<b>Local Co-ordinate Reference:</b>	Well Circle B 6-66-9-0263CDH
<b>Company:</b>	BILL BARRETT CORP	<b>TVD Reference:</b>	KB @ 4837.0ft (Original Well Elev)
<b>Project:</b>	WELD COUNTY, COLORADO	<b>MD Reference:</b>	KB @ 4837.0ft (Original Well Elev)
<b>Site:</b>	Circle B 6-66-9 Pad	<b>North Reference:</b>	True
<b>Well:</b>	Circle B 6-66-9-0263CDH	<b>Survey Calculation Method:</b>	Minimum Curvature
<b>Wellbore:</b>	Wellbore #1		
<b>Design:</b>	Design #1		

Formations						
	Measured Depth (ft)	Vertical Depth (ft)	Name	Lithology	Dip (°)	Dip Direction (°)
		0.0	Pierre (Fox Hills Base)		-0.43	179.51
	4,550.7	4,458.0	Sussex		-0.43	179.51
	4,969.0	4,863.0	Shannon		-0.43	179.51
	7,015.2	6,878.0	Sharon Springs		-0.43	179.51
	7,084.8	6,945.0	Niobrara		-0.43	179.51
	7,644.7	7,285.0	Top Codell Target		-0.43	179.51
		7,304.0	Base Codell Target		-0.43	179.51