

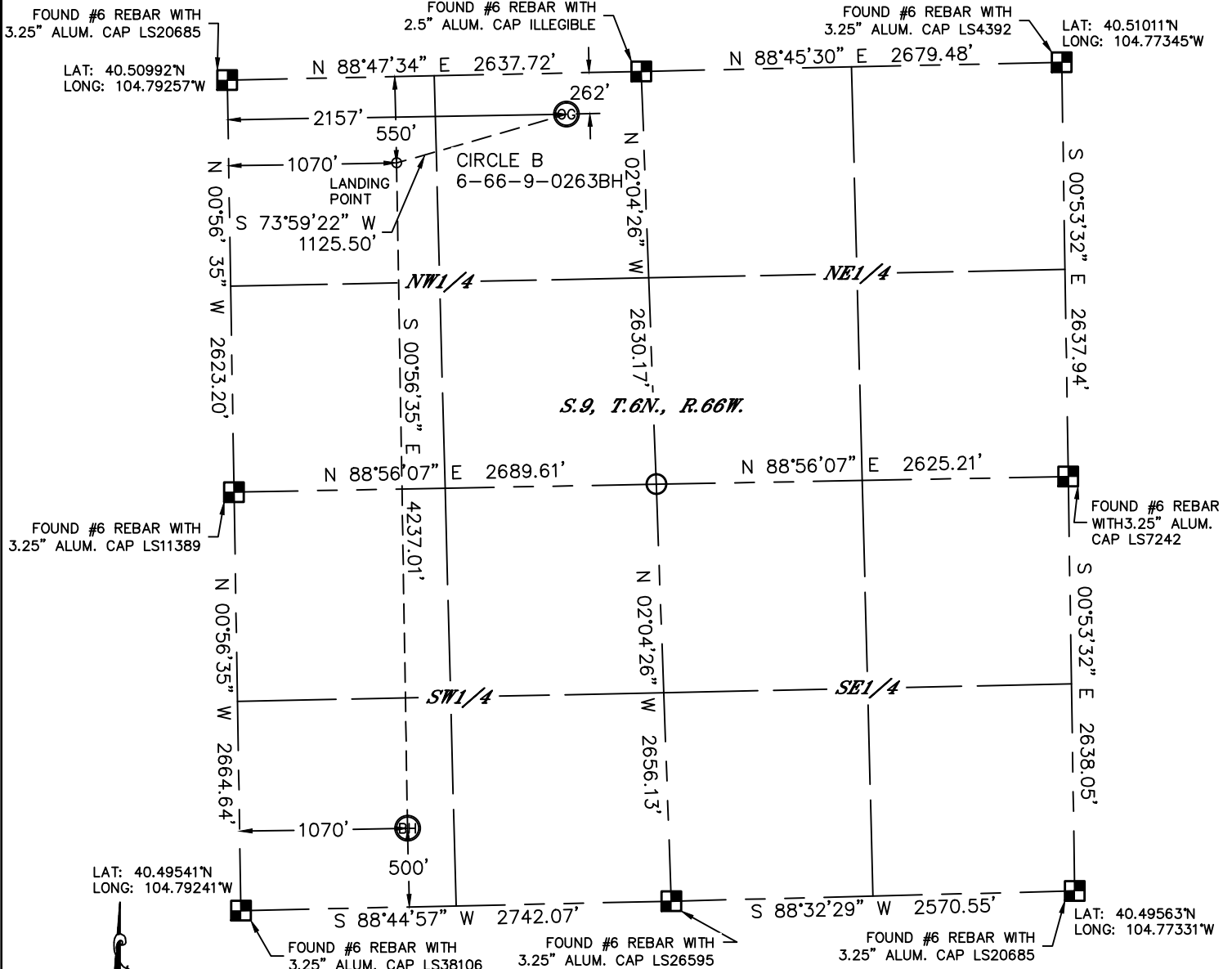


Lat40°, Inc. 1635 Foxtrail Drive, Suite 325 Loveland, CO 970-776-3321

# WELL LOCATION CERTIFICATE

THIS MAP DOES NOT REPRESENT A BOUNDARY SURVEY

SECTION: 9  
TOWNSHIP: 6N  
RANGE: 66W



In accordance with a request from Jeff Fandrich with BILL BARRETT CORPORATION Lat40°, Inc. has determined the surface location of the CIRCLE B 6-66-9-0263BH to be 262' from the NORTH line and 2157' from the WEST line and the bottom hole to be 500' from the SOUTH line and 1070' from the WEST line as measured at right angles from the section lines of Section 9, Township 6 North, Range 66 West of the Sixth Principal Meridian, County of Weld, State of Colorado.

I hereby state that this Well Location Certificate was prepared by me, or under my direct supervision, that the fieldwork was completed on 5/15/2013, for and on behalf of BILL BARRETT CORPORATION That this is not a Land Survey Plat or an Improvement Survey Plat, and that it is not to be relied upon for establishment of fence, building, or other future improvement lines.

## NOTE:

- 1) Bearings shown are Grid Bearings of the Colorado State Plane Coordinate System, North Zone, North American Datum 1983/2007. The lineal dimensions as contained herein are based upon the "U.S. Survey Foot."
- 2) Ground elevations are based on an observed GPS elevation (NAVD 1988 DATUM).
- 3) IMPROVEMENTS: See LOCATION DRAWING for all visible improvements within 400' of disturbed area.
- 4) SURFACE USE: CROPLAND
- 5) INSTRUMENT OPERATOR: WYATT HALL

## NOTE

According to Colorado law, you must commence any legal action based upon any defect in this W.L.C. within three years after you discover such defect. In no event, may any action based upon any defect in this survey be commenced more than ten years after the date of the certificate shown hereon. (13-80-105 C.R.S.)

## LEGEND

- = ALIQUOT MONUMENT AS DESCRIBED
- = CALCULATED POSITION

## SURFACE LOCATION

LAT: 40.50928°N (40°30'33.4"N)  
LONG: 104.78481°W (104°47'05.3"W)  
LAT: 40.50930°N (NAD27)  
LONG: 104.78428°W (NAD27)  
PDOP: 1.4  
ELEV: 4814'

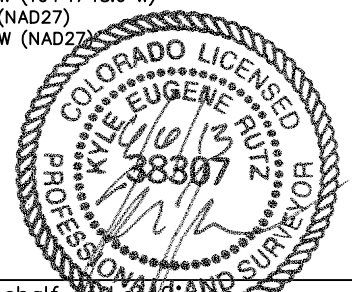
1/4, 1/4: NE1/4NW1/4  
NEAREST PROPERTY LINE: 262' NORTH

## LANDING POINT

LAT: 40.50845°N (40°30'30.4"N)  
LONG: 104.78871°W (104°47'19.3"W)  
LAT: 40.50847°N (NAD27)  
LONG: 104.78818°W (NAD27)

## BOTTOM HOLE

LAT: 40.49682°N (40°29'48.6"N)  
LONG: 104.78858°W (104°47'18.9"W)  
LAT: 40.49684°N (NAD27)  
LONG: 104.78805°W (NAD27)



Kyle E. Rutz—On behalf of  
Colorado Licensed Professional  
Land Surveyor No. 38307

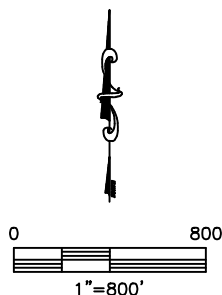
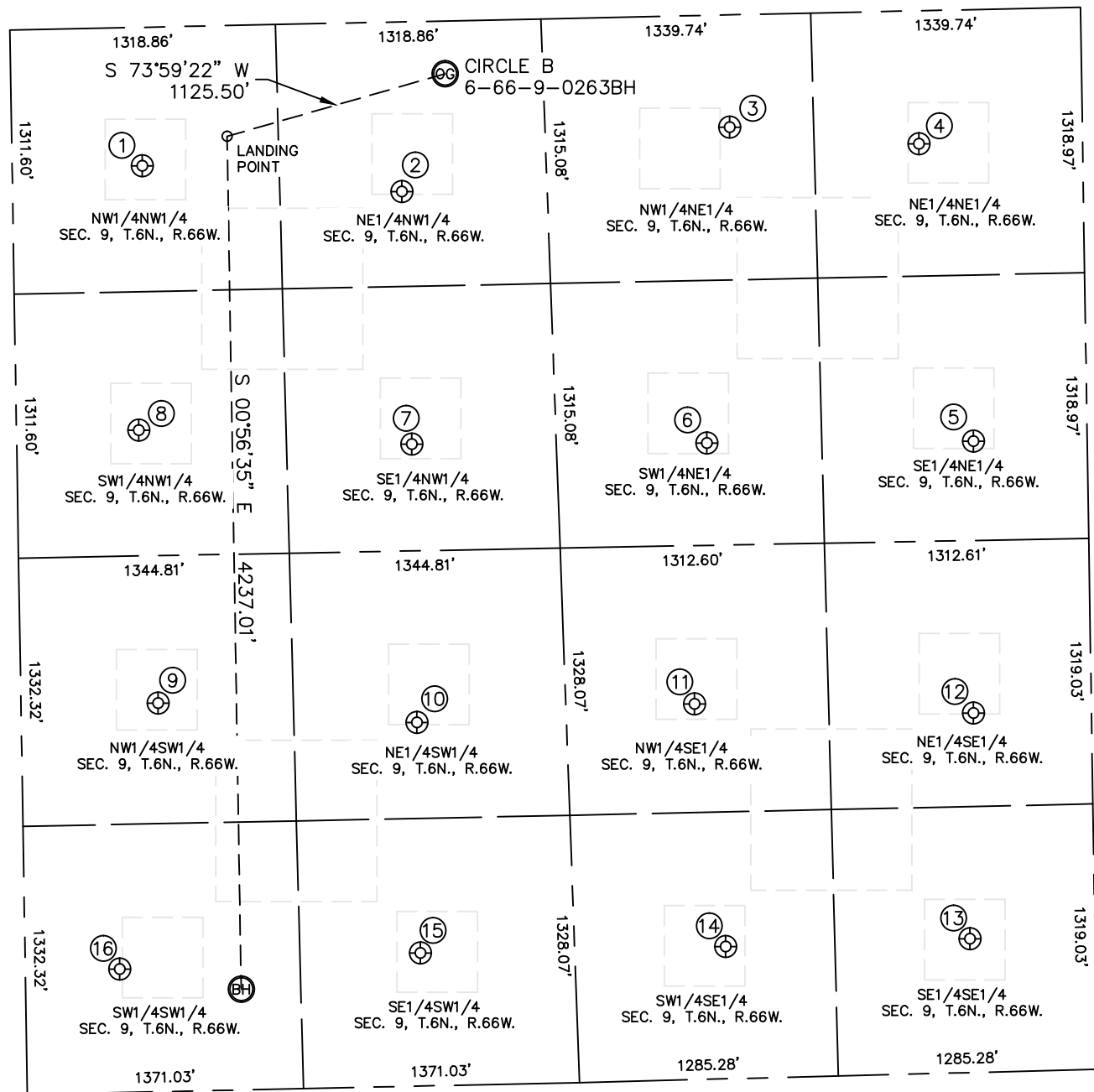
DATE: 6/5/2013  
PROJECT#: 2012112

## SITE SKETCH

CIRCLE B 6-66-9-0263BH

(1 OF 2)

SECTION: 9  
TOWNSHIP: 6N  
RANGE: 66W





Lat40°, Inc. 1635 Foxtrail Drive, Suite 325 Loveland, CO 970-776-3321

## SITE SKETCH

CIRCLE B 6-66-9-0263BH  
(2 OF 2)

SECTION: 9  
TOWNSHIP: 6N  
RANGE: 66W

①

A&N FARMS 1  
NW1/4NW1/4  
688' FNL  
646' FWL  
LAT-40.50805°N  
LONG-104.79023°W  
PDOP: 1.9  
ELEV: 4822'

②

A&N FARMS 21-9  
NE1/4NW1/4  
844' FNL  
1933' FWL  
LAT-40.50767°N  
LONG-104.78559°W  
PDOP: 3.3  
ELEV: 4809'

③

INDIAN TREE 31-9  
NW1/4NE1/4  
558' FNL  
1751' FEL  
LAT-40.50852°N  
LONG-104.77974°W  
PDOP: 2.0  
ELEV: 4848'

④

INDIAN TREE  
NE1/4NE1/4  
660' FNL  
812' FEL  
LAT-40.50827°N  
LONG-104.77636°W  
PDOP: 2.2  
ELEV: 4861'

⑤

INDIAN TREE 42-9  
SE1/4NE1/4  
2143' FNL  
566' FEL  
LAT-40.50421°N  
LONG-104.77543°W  
PDOP: 2.2  
ELEV: 4878'

⑥

INDIAN TREE 32-9  
SW1/4NE1/4  
2125' FNL  
1889' FEL  
LAT-40.50421°N  
LONG-104.78019°W  
PDOP: 2.2  
ELEV: 4838'

⑦

A&N FARMS 22-9  
SE1/4NW1/4  
2098' FNL  
1961' FWL  
LAT-40.50423°N  
LONG-104.78546°W  
PDOP: 2.0  
ELEV: 4798'

⑧

A&N FARMS 12-9  
SW1/4NW1/4  
2000' FNL  
607' FWL  
LAT-40.50445°N  
LONG-104.79033°W  
PDOP: 1.5  
ELEV: 4815'

⑨

CEI-GUTTERSON 1  
NW1/4SW1/4  
1912' FSL  
682' FWL  
LAT-40.50068°N  
LONG-104.79002°W  
PDOP: 1.5  
ELEV: 4816'

⑩

GUTTERSON 23-9  
NE1/4SW1/4  
1806' FSL  
1964' FWL  
LAT-40.50044°N  
LONG-104.78540°W  
PDOP: 2.3  
ELEV: 4791'

⑪

LUCAS SCHOOL 33-9  
NW1/4SE1/4  
1865' FSL  
1971' FEL  
LAT-40.50066°N  
LONG-104.78045°W  
PDOP: 2.3  
ELEV: 4811'

⑫

LUCAS SCHOOL 43-9  
NE1/4SE1/4  
1785' FSL  
587' FEL  
LAT-40.50050°N  
LONG-104.77547°W  
PDOP: 2.3  
ELEV: 4851'

⑬

LUCAS SCHOOL 1  
SE1/4SE1/4  
665' FSL  
621' FEL  
LAT-40.49743°N  
LONG-104.77556°W  
PDOP: 1.9  
ELEV: 4822'

⑭

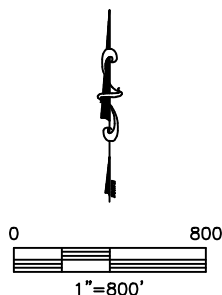
LUCAS SCHOOL 34-9  
SW1/4SE1/4  
657' FSL  
1834' FEL  
LAT-40.49735°N  
LONG-104.77993°W  
PDOP: 1.7  
ELEV: 4785'

⑮

LOVELY 1  
SE1/4SW1/4  
660' FSL  
1962' FWL  
LAT-40.49729°N  
LONG-104.78538°W  
PDOP: 1.7  
ELEV: 4801'

⑯

LOVELY 14-9  
SW1/4SW1/4  
613' FSL  
468' FWL  
LAT-40.49711°N  
LONG-104.79075°W  
PDOP: 2.3  
ELEV: 4810'



DATE: 6/5/2013  
PROJECT#: 2012112