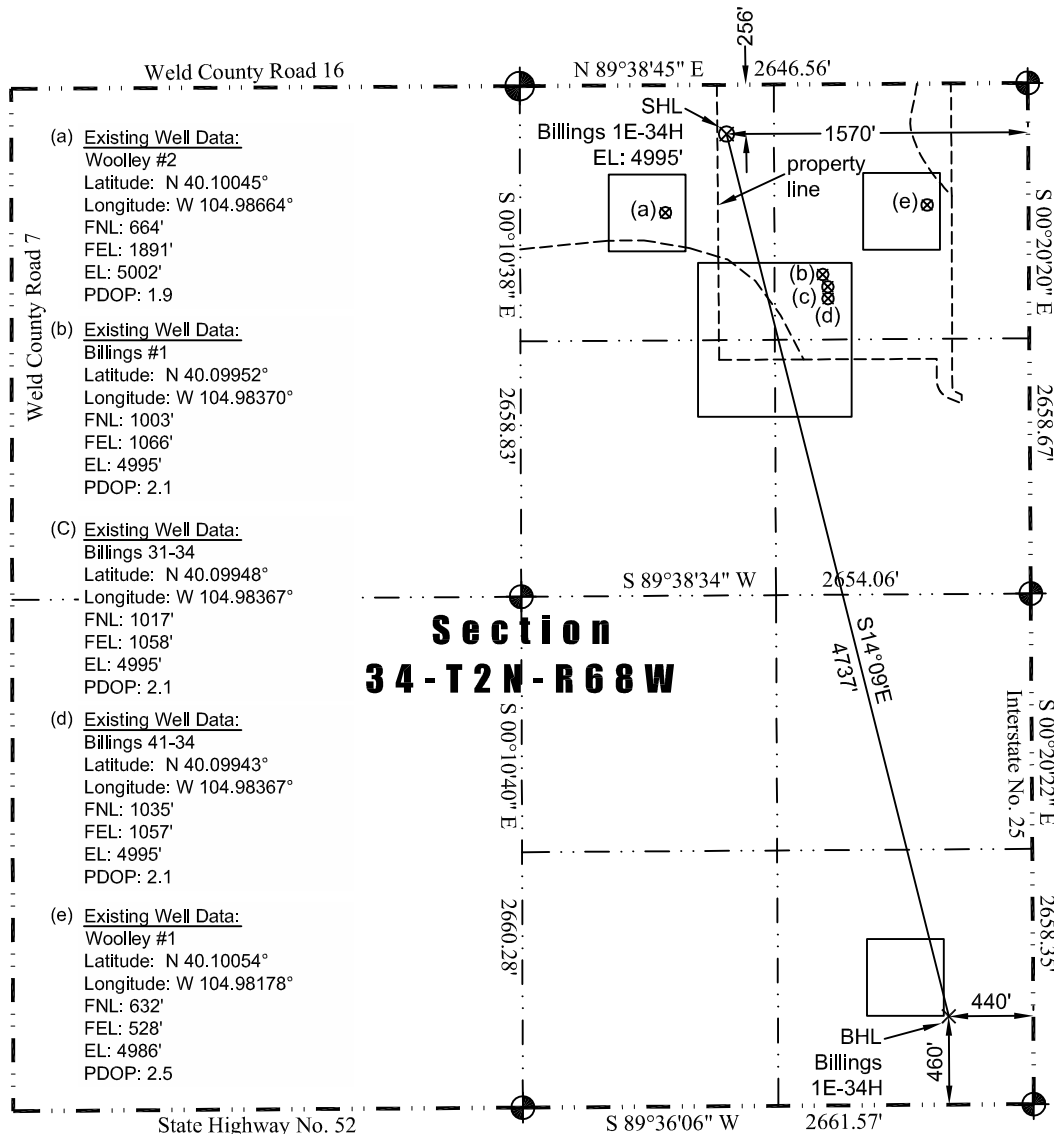



THIS MAP DOES NOT REPRESENT A BOUNDARY SURVEY



Scale 1" = 1000'



1000'

approximate scale

LEGEND

— found survey monument

— calculated dimension

(c)

In accordance with a request from Jay Knutson of EnCana Oil & Gas (USA) Inc., JR Land Surveying, LLC has determined the location of the **Billings 1E-34H** well site to be SHL: 256' FNL and 1570' FEL, (BHL: 460' FSL and 440' FEL) as measured at ninety (90) degrees from the section lines of Section 34, Township 2 North, Range 68 West, 6th Principal Meridian, County of Weld, CO.

Latitude: N 40.10157° (BHL: 40.08894°)
Longitude: W 104.98550° (BHL: 104.98146°)
PDOP: 1.8

Building: 1,012' southeast Above Ground Utility: 284' north
Public Road: 250' north Railroad 15,151' southwest
Property Line: 48' west Well Window: SHL is 300' outside
Existing Well: Woolley #2, 519' southwest

- 1) Bearings and distances based on NAD 83 Colorado North State Plane Coordinates using RTK GPS observations taken 6/12/13 by operator John Rice.
- 2) Conversion factor to ground (1.0002740286).
- 3) Elevations based on NAVD 88 GPS heights and Geoid 2003 corrections.
- 4) See Location Drawing for visible improvements within 400 of pad site.
- 5) The surface use is a uncultivated field.

NOTICE: According to Colorado law you **MUST** commence any legal action based upon any defect in this W.L.C. within three years after you first discover such defect. In no event may any action based upon any defect in this W.L.C. be commenced more than ten years from this said date of the certification shown hereon.

I hereby certify that this Well Location Certificate was prepared by me or under my direct supervision on 6/12/2013 for and on behalf of EnCana Oil & Gas (USA) Inc. That it is not a Land Survey Plat or an Improvement Survey Plat and that it is not to be relied upon for establishment of fences, buildings, or other future improvement lines.

John Robert McGehee LS#38219
Well: Billings 1E-34H WLC